

MLS Area: Evanston



ART WILSON

Broker, Realtor

847-363-1599

www.NorthShoreHomesOnline.com

Art.Wilson@cbexchange.com



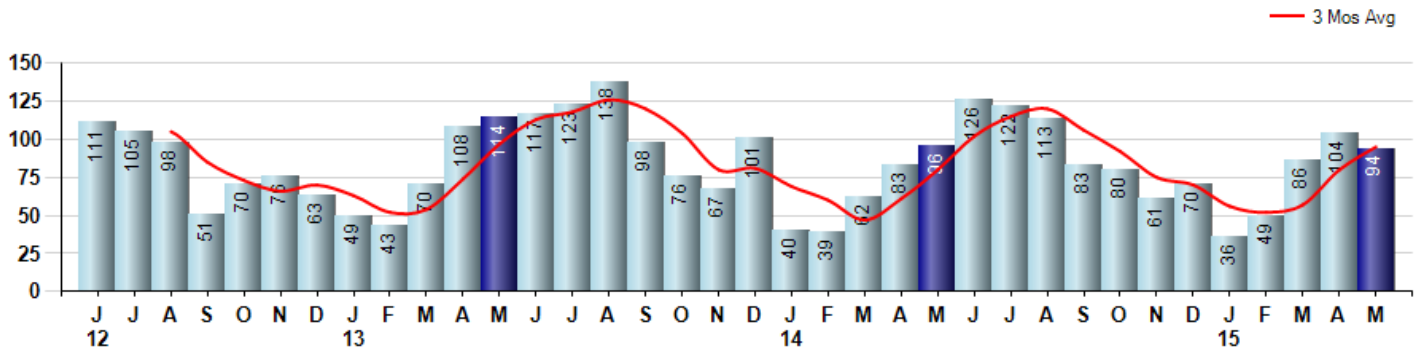
Price Range: \$0 to \$999,999,000 | Properties: Single Family Home, Townhome, Condo

Market Profile & Trends Overview	Month	Trending Versus*:				YTD	Trending Versus*:	
		LM	L3M	PYM	LY		PriorYTD	PriorYear
Median List Price of all Current Listings	\$325,000	↓		↑				
Average List Price of all Current Listings	\$481,440	↔		↑				
May Median Sales Price	\$332,500	↑	↑	↑	↑	\$300,000	↑	↓
May Average Sales Price	\$461,576	↑	↑	↑	↑	\$387,052	↑	↑
Total Properties Currently for Sale (Inventory)	373	↑		↓				
May Number of Properties Sold	94	↓		↓		369	↑	
May Average Days on Market (Solds)	66	↓	↓	↓	↑	72	↔	↑
May Month's Supply of Inventory	4.0	↑	↑	↑	↓	5.1	↓	↑
May Sale Price vs List Price Ratio	97.1%	↑	↑	↑	↑	96.5%	↓	↓

* LM=Last Month / L3M=Last 3 Months / PYM=Same Month Prior Year / LY=Last Year / YTD = Year-to-date

Property Sales

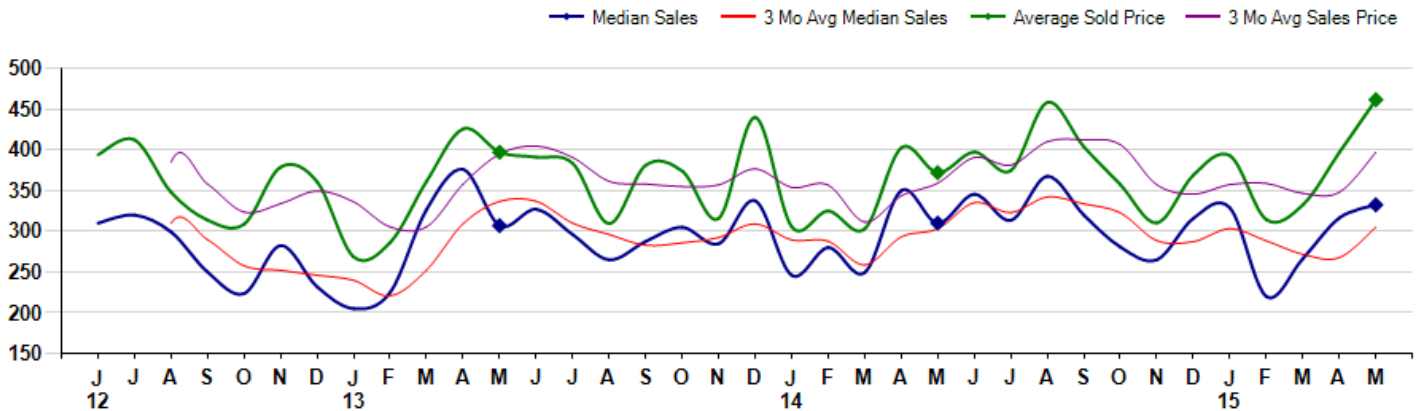
May Property sales were 94, down -2.1% from 96 in May of 2014 and -9.6% lower than the 104 sales last month. May 2015 sales were at their lowest level compared to May of 2014 and 2013. May YTD sales of 369 are running 15.3% ahead of last year's year-to-date sales of 320.



Prices

The Median Sales Price in May was \$332,500, up 7.3% from \$310,000 in May of 2014 and up 5.1% from \$316,500 last month. The Average Sales Price in May was \$461,576, up 24.1% from \$372,001 in May of 2014 and up 16.3% from \$396,981 last month. May 2015 ASP was at highest level compared to May of 2014 and 2013.

Median means Middle (the same # of properties sold above and below Median) (000's)



MLS Area: Evanston



ART WILSON

Broker, Realtor

847-363-1599

www.NorthShoreHomesOnline.com

Art.Wilson@cbexchange.com



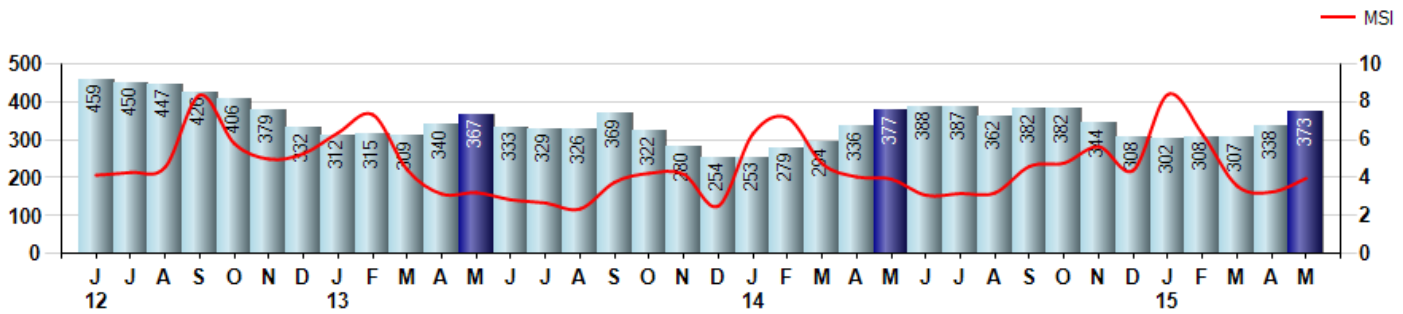
Price Range: \$0 to \$999,999,000 | Properties: Single Family Home, Townhome, Condo

Inventory & MSI

The Total Inventory of Properties available for sale as of May was 373, up 10.4% from 338 last month and down -1.1% from 377 in May of last year. May 2015 Inventory was at a mid range compared to May of 2014 and 2013.

A comparatively lower MSI is more beneficial for sellers while a higher MSI is better for buyers. The May 2015 MSI of 4.0 months was at its highest level compared with May of 2014 and 2013.

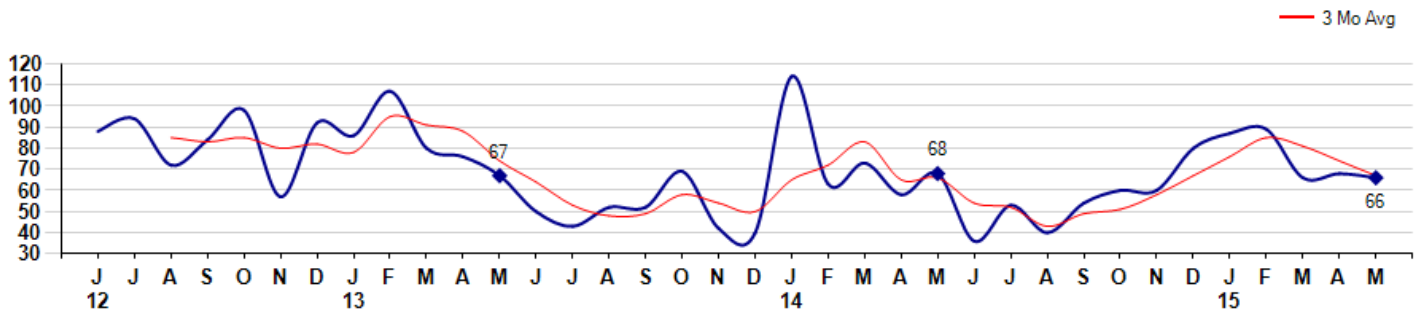
MSI is the # of months needed to sell all of the Inventory at the monthly Sales Pace



Market Time

The average Days On Market(DOM) shows how many days the average Property is on the Market before it sells. An upward trend in DOM tends to indicate a move towards more of a Buyer's market, a downward trend a move towards more of a Seller's market. The DOM for May was 66, down -2.9% from 68 days last month and down -2.9% from 68 days in May of last year. The May 2015 DOM was at its lowest level compared with May of 2014 and 2013.

Average Days on Market(Listing to Contract) for properties sold during the month



MLS Area: Evanston



ART WILSON
 Broker, Realtor
 847-363-1599
 www.NorthShoreHomesOnline.com
 Art.Wilson@cbexchange.com

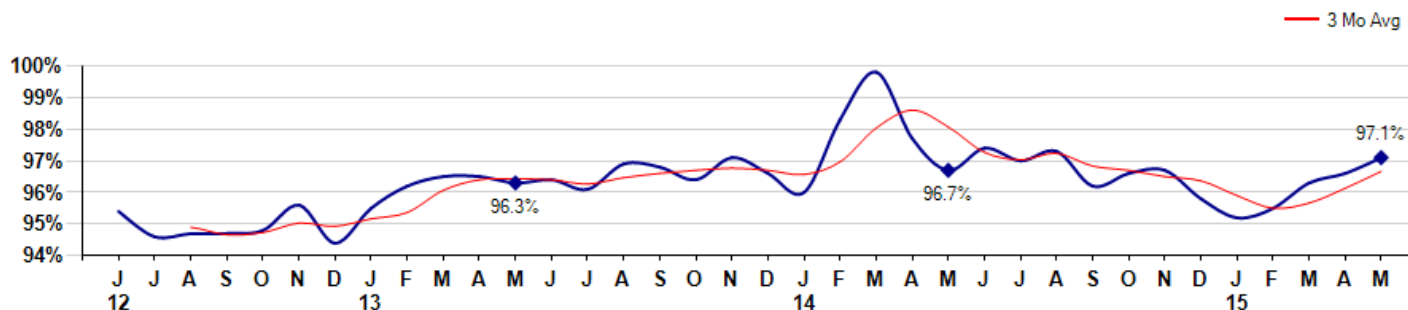


Price Range: \$0 to \$999,999,000 | Properties: Single Family Home, Townhome, Condo

Selling Price vs Listing Price

The Selling Price vs Listing Price reveals the average amount that Sellers are agreeing to come down from their list price. The lower the ratio is below 100% the more of a Buyer's market exists, a ratio at or above 100% indicates more of a Seller's market. The May 2015 Selling Price vs List Price of 97.1% was up from 96.6% last month and up from 96.7% in May of last year.

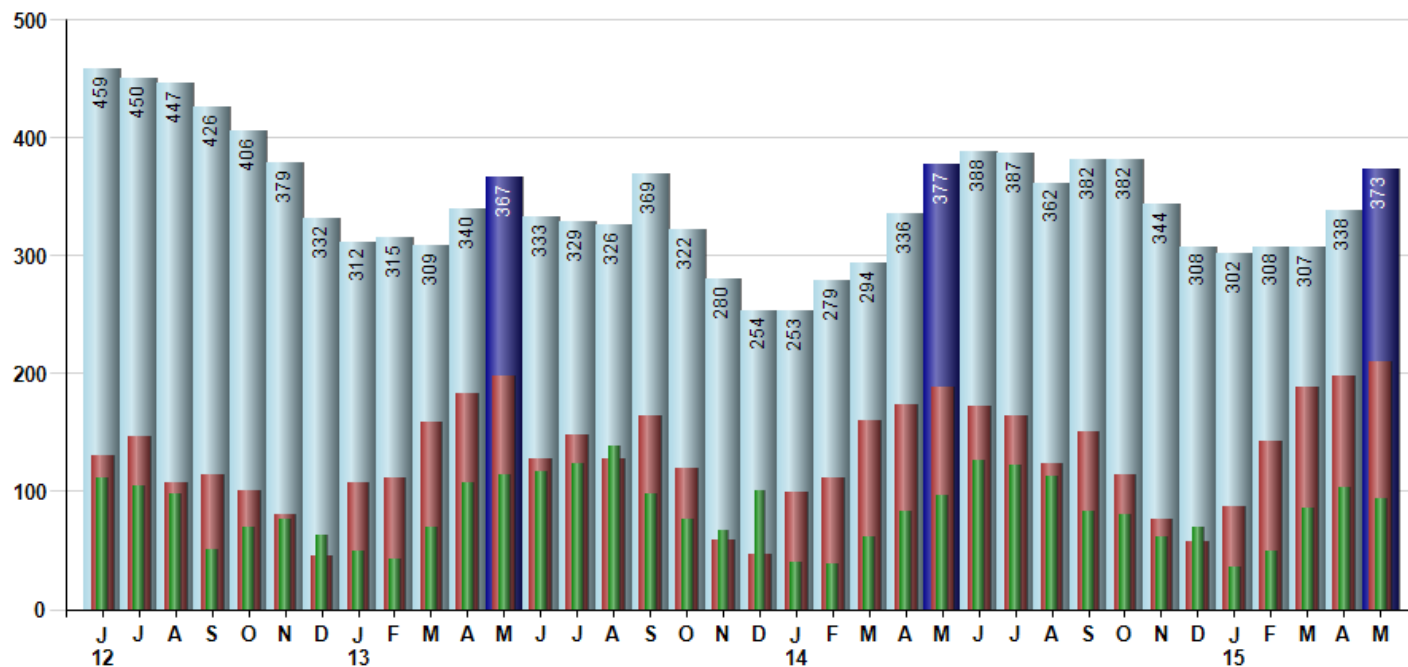
Avg Selling Price divided by Avg Listing Price for sold properties during the month



Inventory / New Listings / Sales

This last view of the market combines monthly inventory of Properties for sale along with New Listings and Sales. The graph shows the basic annual seasonality of the market as well as the relationship between these items. The number of New Listings in May 2015 was 210, up 6.1% from 198 last month and up 11.7% from 188 in May of last year.

Inventory (light blue), New Listings (red), Sold (green)



© 2015 Coldwell Banker Real Estate LLC. All Rights Reserved. Coldwell Banker Residential Brokerage fully supports the principles of the Fair Housing Act and the Equal Opportunity Act. Coldwell Banker Residential Brokerage is operated by a subsidiary of NRT LLC. Coldwell Banker and the Coldwell Banker Logo are registered service marks owned by Coldwell Banker Real Estate LLC.

Based on information from Midwest Real Estate Data LLC for the period 6/1/2012 through 5/31/2015. Due to MLS reporting methods and allowable reporting policy, this data is only informational and may not be completely accurate. Therefore, Coldwell Banker Residential Brokerage does not guarantee the data accuracy. Data maintained by the MLS's may not reflect all real estate activity in the market.



MLS Area: Evanston



ART WILSON
 Broker, Realtor
 847-363-1599
 www.NorthShoreHomesOnline.com
 Art.Wilson@cbexchange.com



Price Range: \$0 to \$999,999,000 | Properties: Single Family Home, Townhome, Condo

	J 12	J	A	S	O	N	D	J 13	F	M	A	M	J	J	A	S	O	N	D	J 14	F	M	A	M	J	J	A	S	O	N	D	J 15	F	M	A	M
Homes Sold	111	105	98	51	70	76	63	49	43	70	108	114	117	123	138	98	76	67	101	40	39	62	83	96	126	122	113	83	80	61	70	36	49	86	104	94
3 Mo. Roll Avg			105	85	73	66	70	63	52	54	74	97	113	118	126	120	104	80	81	69	60	47	61	80	102	115	120	106	92	75	70	56	52	57	80	95

(000's)	J 12	J	A	S	O	N	D	J 13	F	M	A	M	J	J	A	S	O	N	D	J 14	F	M	A	M	J	J	A	S	O	N	D	J 15	F	M	A	M
Median Sale Price	310	320	299	250	224	283	232	205	225	327	376	307	327	296	265	288	305	285	338	246	280	250	350	310	346	314	368	320	281	265	316	329	220	267	317	333
3 Mo. Roll Avg			310	290	258	252	246	240	221	252	309	337	337	310	296	283	286	292	309	289	288	259	293	303	335	323	342	334	323	289	287	303	288	272	268	305

	J 12	J	A	S	O	N	D	J 13	F	M	A	M	J	J	A	S	O	N	D	J 14	F	M	A	M	J	J	A	S	O	N	D	J 15	F	M	A	M
Inventory	459	450	447	426	406	379	332	312	315	309	340	367	333	329	326	369	322	280	254	253	279	294	336	377	388	387	362	382	382	344	308	302	308	307	338	373
MSI	4	4	5	8	6	5	5	6	7	4	3	3	3	3	2	4	4	4	3	6	7	5	4	4	3	3	3	5	5	6	4	8	6	4	3	4

	J 12	J	A	S	O	N	D	J 13	F	M	A	M	J	J	A	S	O	N	D	J 14	F	M	A	M	J	J	A	S	O	N	D	J 15	F	M	A	M
Days On Market	88	94	72	84	98	57	92	86	107	80	76	67	50	43	52	52	69	42	40	114	63	73	58	68	36	53	40	54	60	60	80	87	89	66	68	66
3 Mo. Roll Avg			85	83	85	80	82	78	95	91	88	74	64	53	48	49	58	54	50	65	72	83	65	66	54	52	43	49	51	58	67	76	85	81	74	67

	J 12	J	A	S	O	N	D	J 13	F	M	A	M	J	J	A	S	O	N	D	J 14	F	M	A	M	J	J	A	S	O	N	D	J 15	F	M	A	M
Price per Sq Ft	228	182	204	171	171	190	183	164	158	186	213	202	198	216	201	210	192	206	232	203	186	174	231	210	223	214	228	222	218	190	204	236	180	201	226	229
3 Mo. Roll Avg			205	186	182	177	181	179	168	169	186	200	204	205	205	209	201	203	210	214	207	188	197	205	221	216	222	221	223	210	204	210	207	206	202	219

	J 12	J	A	S	O	N	D	J 13	F	M	A	M	J	J	A	S	O	N	D	J 14	F	M	A	M	J	J	A	S	O	N	D	J 15	F	M	A	M
Sale to List Price	0.954	0.946	0.947	0.947	0.948	0.956	0.944	0.955	0.962	0.965	0.965	0.963	0.964	0.961	0.969	0.968	0.964	0.971	0.966	0.960	0.983	0.998	0.977	0.967	0.974	0.970	0.973	0.962	0.966	0.967	0.958	0.952	0.955	0.963	0.966	0.971
3 Mo. Roll Avg			0.949	0.947	0.947	0.950	0.949	0.952	0.954	0.961	0.964	0.964	0.964	0.963	0.965	0.966	0.967	0.968	0.967	0.966	0.970	0.980	0.986	0.981	0.973	0.970	0.972	0.968	0.967	0.965	0.964	0.959	0.955	0.957	0.961	0.967

	J 12	J	A	S	O	N	D	J 13	F	M	A	M	J	J	A	S	O	N	D	J 14	F	M	A	M	J	J	A	S	O	N	D	J 15	F	M	A	M
New Listings	131	147	108	114	101	80	45	108	112	159	183	198	128	148	128	164	119	59	46	99	111	160	174	188	172	164	123	150	114	76	58	87	143	189	198	210
Inventory	459	450	447	426	406	379	332	312	315	309	340	367	333	329	326	369	322	280	254	253	279	294	336	377	388	387	362	382	382	344	308	302	308	307	338	373
Sales	111	105	98	51	70	76	63	49	43	70	108	114	117	123	138	98	76	67	101	40	39	62	83	96	126	122	113	83	80	61	70	36	49	86	104	94

(000's)	J 12	J	A	S	O	N	D	J 13	F	M	A	M	J	J	A	S	O	N	D	J 14	F	M	A	M	J	J	A	S	O	N	D	J 15	F	M	A	M
Avg Sale Price	394	412	348	314	309	379	361	269	286	362	426	397	391	384	309	381	374	316	440	306	325	303	403	372	397	375	458	404	358	310	369	393	314	333	397	462
3 Mo. Roll Avg			385	358	324	334	350	336	305	305	358	395	405	391	361	358	355	357	377	354	357	311	344	359	391	381	410	412	407	357	346	357	359	347	348	397

© 2015 Coldwell Banker Real Estate LLC. All Rights Reserved. Coldwell Banker Residential Brokerage fully supports the principles of the Fair Housing Act and the Equal Opportunity Act. Coldwell Banker Residential Brokerage is operated by a subsidiary of NRT LLC. Coldwell Banker and the Coldwell Banker Logo are registered service marks owned by Coldwell Banker Real Estate LLC.

Based on information from Midwest Real Estate Data LLC for the period 6/1/2012 through 5/31/2015. Due to MLS reporting methods and allowable reporting policy, this data is only informational and may not be completely accurate. Therefore, Coldwell Banker Residential Brokerage does not guarantee the data accuracy. Data maintained by the MLS's may not reflect all real estate activity in the market.

