

MLS Area: Winnetka



ART WILSON

Broker, Realtor

847-363-1599

www.NorthShoreHomesOnline.com

Art.Wilson@cbexchange.com



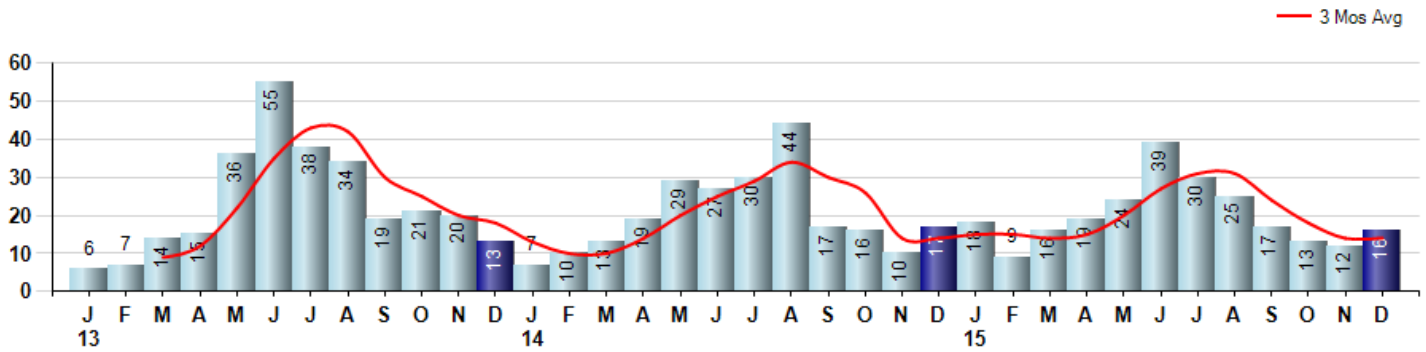
Price Range: \$0 to \$999,999,000 | Properties: Single Family Home, Townhome, Condo

Market Profile & Trends Overview	Month	Trending Versus*:				YTD	Trending Versus*:	
		LM	L3M	PYM	LY		PriorYTD	PriorYear
Median List Price of all Current Listings	\$1,599,000	↑		↑				
Average List Price of all Current Listings	\$1,828,935	↔		↓				
December Median Sales Price	\$1,190,000	↑	↑	↑	↑	\$1,072,000	↓	↓
December Average Sales Price	\$1,479,125	↑	↑	↑	↑	\$1,306,862	↔	↓
Total Properties Currently for Sale (Inventory)	123	↓		↑				
December Number of Properties Sold	16	↑		↓		238	↔	
December Average Days on Market (Solds)	95	↑	↑	↑	↑	76	↑	↑
December Month's Supply of Inventory	7.7	↓	↓	↑	↓	9.5	↑	↑
December Sale Price vs List Price Ratio	95.1%	↑	↑	↔	↑	94.5%	↑	↑

* LM=Last Month / L3M=Last 3 Months / PYM=Same Month Prior Year / LY=Last Year / YTD = Year-to-date

Property Sales

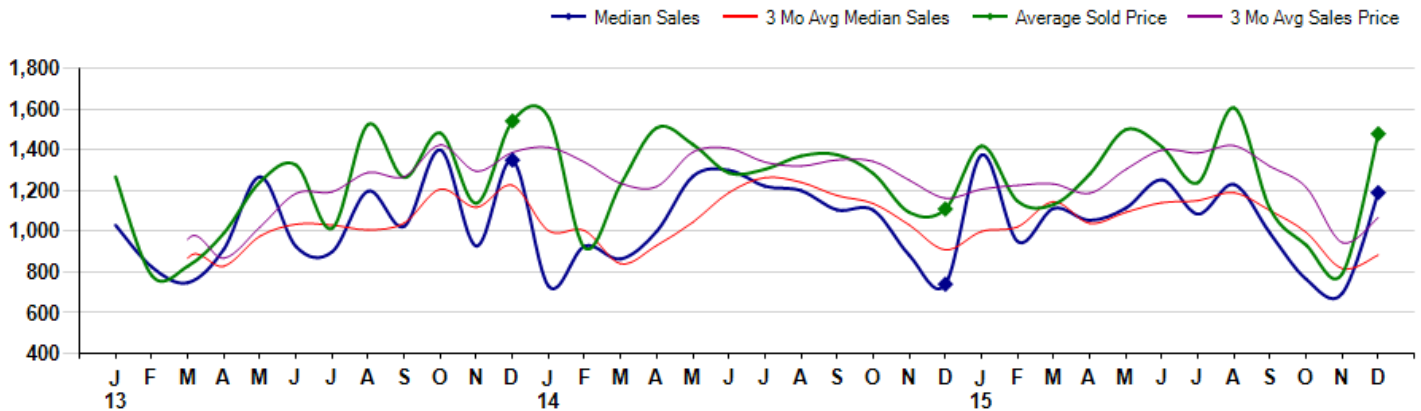
December Property sales were 16, down -5.9% from 17 in December of 2014 and 33.3% higher than the 12 sales last month. December 2015 sales were at a mid level compared to December of 2014 and 2013. December YTD sales of 238 are running -0.4% behind last year's year-to-date sales of 239.



Prices

The Median Sales Price in December was \$1,190,000, up 60.8% from \$740,000 in December of 2014 and up 71.2% from \$695,000 last month. The Average Sales Price in December was \$1,479,125, up 33.3% from \$1,109,506 in December of 2014 and up 86.9% from \$791,481 last month. December 2015 ASP was at a mid range compared to December of 2014 and 2013.

Median means Middle (the same # of properties sold above and below Median) (000's)



MLS Area: Winnetka



ART WILSON

Broker, Realtor

847-363-1599

www.NorthShoreHomesOnline.com

Art.Wilson@cbexchange.com



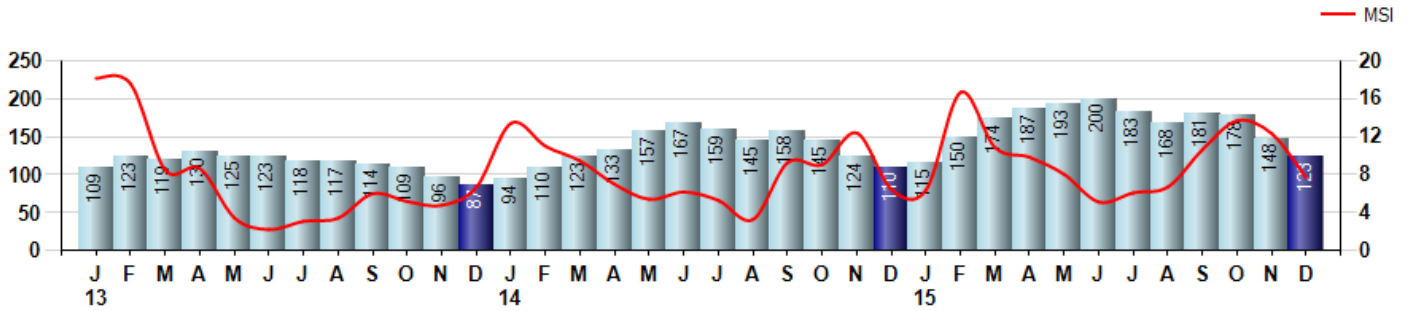
Price Range: \$0 to \$999,999,000 | Properties: Single Family Home, Townhome, Condo

Inventory & MSI

The Total Inventory of Properties available for sale as of December was 123, down -16.9% from 148 last month and up 11.8% from 110 in December of last year. December 2015 Inventory was at highest level compared to December of 2014 and 2013.

A comparatively lower MSI is more beneficial for sellers while a higher MSI is better for buyers. The December 2015 MSI of 7.7 months was at its highest level compared with December of 2014 and 2013.

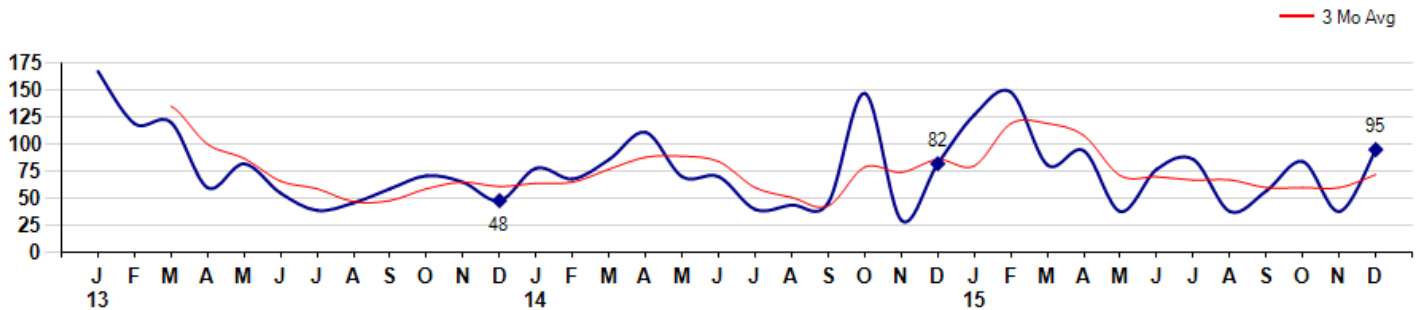
MSI is the # of months needed to sell all of the Inventory at the monthly Sales Pace



Market Time

The average Days On Market(DOM) shows how many days the average Property is on the Market before it sells. An upward trend in DOM tends to indicate a move towards more of a Buyer's market, a downward trend a move towards more of a Seller's market. The DOM for December was 95, up 150.0% from 38 days last month and up 15.9% from 82 days in December of last year. The December 2015 DOM was at its highest level compared with December of 2014 and 2013.

Average Days on Market(Listing to Contract) for properties sold during the month



MLS Area: Winnetka



ART WILSON

Broker, Realtor

847-363-1599

www.NorthShoreHomesOnline.com

Art.Wilson@cbexchange.com

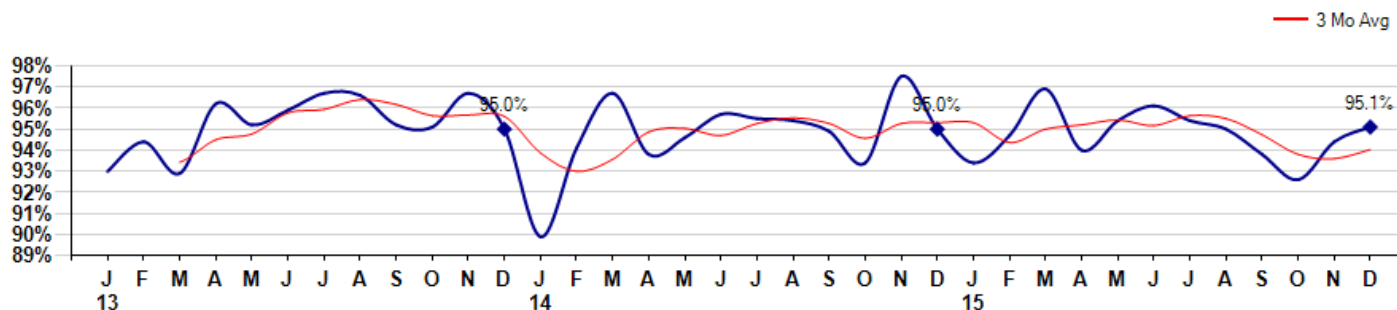


Price Range: \$0 to \$999,999,000 | Properties: Single Family Home, Townhome, Condo

Selling Price vs Listing Price

The Selling Price vs Listing Price reveals the average amount that Sellers are agreeing to come down from their list price. The lower the ratio is below 100% the more of a Buyer's market exists, a ratio at or above 100% indicates more of a Seller's market. The December 2015 Selling Price vs List Price of 95.1% was up from 94.4% last month and up from 95.0% in December of last year.

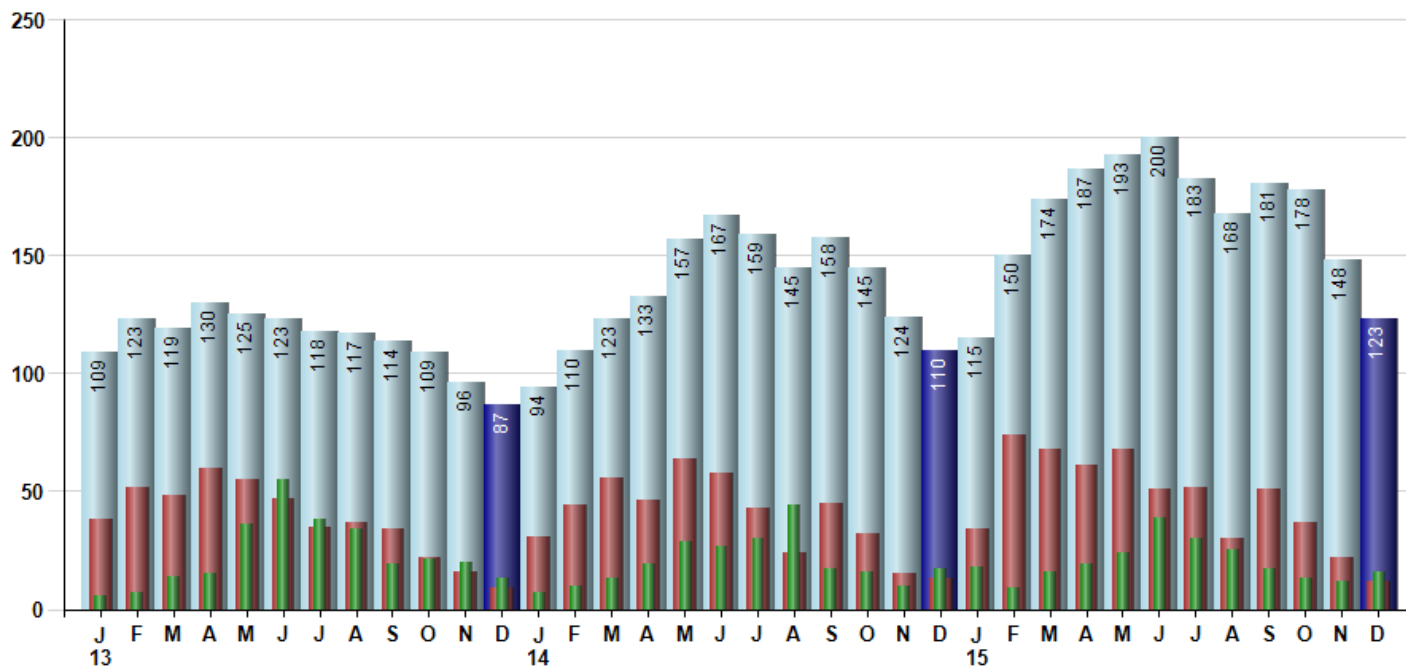
Avg Selling Price divided by Avg Listing Price for sold properties during the month



Inventory / New Listings / Sales

This last view of the market combines monthly inventory of Properties for sale along with New Listings and Sales. The graph shows the basic annual seasonality of the market as well as the relationship between these items. The number of New Listings in December 2015 was 12, down -45.5% from 22 last month and down -7.7% from 13 in December of last year.

Inventory New Listings Sold



© 2016 Coldwell Banker Real Estate LLC. All Rights Reserved. Coldwell Banker Residential Brokerage fully supports the principles of the Fair Housing Act and the Equal Opportunity Act. Coldwell Banker Residential Brokerage is operated by a subsidiary of NRT LLC. Coldwell Banker and the Coldwell Banker Logo are registered service marks owned by Coldwell Banker Real Estate LLC.

Based on information from Midwest Real Estate Data LLC for the period 1/1/2013 through 12/31/2015. Due to MLS reporting methods and allowable reporting policy, this data is only informational and may not be completely accurate. Therefore, Coldwell Banker Residential Brokerage does not guarantee the data accuracy. Data maintained by the MLS's may not reflect all real estate activity in the market.



MLS Area: Winnetka



ART WILSON
 Broker, Realtor
 847-363-1599
 www.NorthShoreHomesOnline.com
 Art.Wilson@cbexchange.com



Price Range: \$0 to \$999,999,000 | Properties: Single Family Home, Townhome, Condo

	J 13	F	M	A	M	J	J	A	S	O	N	D	J 14	F	M	A	M	J	J	A	S	O	N	D	J 15	F	M	A	M	J	J	A	S	O	N	D
Homes Sold	6	7	14	15	36	55	38	34	19	21	20	13	7	10	13	19	29	27	30	44	17	16	10	17	18	9	16	19	24	39	30	25	17	13	12	16
3 Mo. Roll Avg			9	12	22	35	43	42	30	25	20	18	13	10	10	14	20	25	29	34	30	26	14	14	15	15	14	15	20	27	31	31	24	18	14	14

(000's)	J 13	F	M	A	M	J	J	A	S	O	N	D	J 14	F	M	A	M	J	J	A	S	O	N	D	J 15	F	M	A	M	J	J	A	S	O	N	D
Median Sale Price	1,030	825	748	912	1,268	925	899	1,198	1,025	1,400	928	1,350	730	928	864	1,000	1,270	1,300	1,222	1,200	1,105	1,104	883	740	1,375	950	1,113	1,054	1,114	1,254	1,085	1,230	990	765	695	1,190
3 Mo. Roll Avg			868	828	976	1,035	1,030	1,007	1,040	1,208	1,118	1,226	1,003	1,003	841	931	1,045	1,190	1,264	1,241	1,176	1,136	1,031	909	999	1,022	1,146	1,039	1,094	1,141	1,151	1,189	1,102	995	817	883

	J 13	F	M	A	M	J	J	A	S	O	N	D	J 14	F	M	A	M	J	J	A	S	O	N	D	J 15	F	M	A	M	J	J	A	S	O	N	D
Inventory	109	123	119	130	125	123	118	117	114	109	96	87	94	110	123	133	157	167	159	145	158	145	124	110	115	150	174	187	193	200	183	168	181	178	148	123
MSI	18	18	9	9	3	2	3	3	6	5	5	7	13	11	9	7	5	6	5	3	9	9	12	6	6	17	11	10	8	5	6	7	11	14	12	8

	J 13	F	M	A	M	J	J	A	S	O	N	D	J 14	F	M	A	M	J	J	A	S	O	N	D	J 15	F	M	A	M	J	J	A	S	O	N	D
Days On Market	167	119	120	60	82	55	39	46	59	71	65	48	78	68	86	111	70	70	40	44	46	147	30	82	127	148	81	94	38	77	86	38	57	84	38	95
3 Mo. Roll Avg			135	100	87	66	59	47	48	59	65	61	64	65	77	88	89	84	60	51	43	79	74	86	80	119	119	108	71	70	67	67	60	60	60	72

	J 13	F	M	A	M	J	J	A	S	O	N	D	J 14	F	M	A	M	J	J	A	S	O	N	D	J 15	F	M	A	M	J	J	A	S	O	N	D
Price per Sq Ft	284	335	196	332	287	364	352	317	329	315	308	334	427	261	348	317	389	342	295	350	358	290	328	342	369	256	297	377	408	363	345	360	354	328	238	381
3 Mo. Roll Avg			272	288	272	328	334	344	333	320	317	319	356	341	345	309	351	349	342	329	334	333	325	320	346	322	307	310	361	383	372	356	353	347	307	316

	J 13	F	M	A	M	J	J	A	S	O	N	D	J 14	F	M	A	M	J	J	A	S	O	N	D	J 15	F	M	A	M	J	J	A	S	O	N	D
Sale to List Price	0.930	0.944	0.929	0.962	0.952	0.959	0.967	0.966	0.952	0.951	0.967	0.950	0.899	0.941	0.967	0.938	0.946	0.957	0.955	0.954	0.949	0.934	0.975	0.950	0.934	0.947	0.969	0.940	0.954	0.961	0.954	0.950	0.938	0.926	0.944	0.951
3 Mo. Roll Avg			0.934	0.945	0.948	0.958	0.959	0.964	0.962	0.956	0.957	0.956	0.939	0.930	0.936	0.949	0.950	0.947	0.953	0.955	0.953	0.946	0.953	0.953	0.944	0.950	0.952	0.954	0.952	0.956	0.955	0.947	0.938	0.936	0.940	

	J 13	F	M	A	M	J	J	A	S	O	N	D	J 14	F	M	A	M	J	J	A	S	O	N	D	J 15	F	M	A	M	J	J	A	S	O	N	D
New Listings	38	52	48	60	55	47	35	37	34	22	16	9	31	44	56	46	64	58	43	24	45	32	15	13	34	74	68	61	68	51	52	30	51	37	22	12
Inventory	109	123	119	130	125	123	118	117	114	109	96	87	94	110	123	133	157	167	159	145	158	145	124	110	115	150	174	187	193	200	183	168	181	178	148	123
Sales	6	7	14	15	36	55	38	34	19	21	20	13	7	10	13	19	29	27	30	44	17	16	10	17	18	9	16	19	24	39	30	25	17	13	12	16

(000's)	J 13	F	M	A	M	J	J	A	S	O	N	D	J 14	F	M	A	M	J	J	A	S	O	N	D	J 15	F	M	A	M	J	J	A	S	O	N	D
Avg Sale Price	1,268	783	828	991	1,242	1,325	1,014	1,526	1,264	1,483	1,138	1,542	1,558	919	1,231	1,509	1,427	1,287	1,305	1,370	1,376	1,284	1,093	1,110	1,419	1,148	1,131	1,281	1,500	1,416	1,239	1,607	1,110	932	791	1,479
3 Mo. Roll Avg			960	867	1,020	1,186	1,194	1,288	1,268	1,424	1,295	1,387	1,412	1,340	1,236	1,219	1,389	1,407	1,339	1,321	1,351	1,344	1,251	1,162	1,207	1,226	1,233	1,187	1,304	1,399	1,385	1,421	1,319	1,216	944	1,068

© 2016 Coldwell Banker Real Estate LLC. All Rights Reserved. Coldwell Banker Residential Brokerage fully supports the principles of the Fair Housing Act and the Equal Opportunity Act. Coldwell Banker Residential Brokerage is operated by a subsidiary of NRT LLC. Coldwell Banker and the Coldwell Banker Logo are registered service marks owned by Coldwell Banker Real Estate LLC.

Based on information from Midwest Real Estate Data LLC for the period 1/1/2013 through 12/31/2015. Due to MLS reporting methods and allowable reporting policy, this data is only informational and may not be completely accurate. Therefore, Coldwell Banker Residential Brokerage does not guarantee the data accuracy. Data maintained by the MLS's may not reflect all real estate activity in the market.

