

## MLS Area: Glencoe



**ART WILSON**  
 Broker, Realtor  
 847-363-1599  
 www.NorthShoreHomesOnline.com  
 Art.Wilson@cbexchange.com



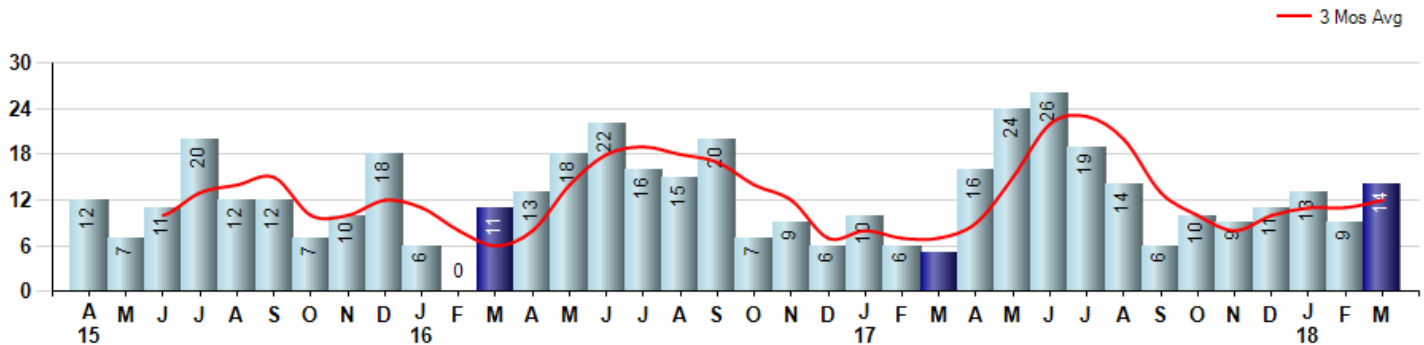
Price Range: 0 to 999999999 | Properties: Single Family Home, Townhome, Condo

Market Profile & Trends Overview	Month	Trending Versus*:				YTD	Trending Versus*:	
		LM	L3M	PYM	LY		PriorYTD	PriorYear
Median List Price of all Current Listings	\$975,000	↓		↓				
Average List Price of all Current Listings	\$1,339,451	↔		↓				
March Median Sales Price	\$619,500	↓	↓	↑	↓	\$840,000	↑	↓
March Average Sales Price	\$672,429	↓	↓	↓	↓	\$972,215	↑	↓
Total Properties Currently for Sale (Inventory)	99	↑		↓				
March Number of Properties Sold	14	↑		↑		36	↑	
March Average Days on Market (Solds)	114	↑	↓	↑	↑	114	↑	↑
March Month's Supply of Inventory	7.1	↓	↓	↓	↓	7.5	↓	↓
March Sale Price vs List Price Ratio	87.3%	↓	↑	↑	↓	87.5%	↓	↓

\* LM=Last Month / L3M=Last 3 Months / PYM=Same Month Prior Year / LY=Last Year / YTD = Year-to-date

### Property Sales

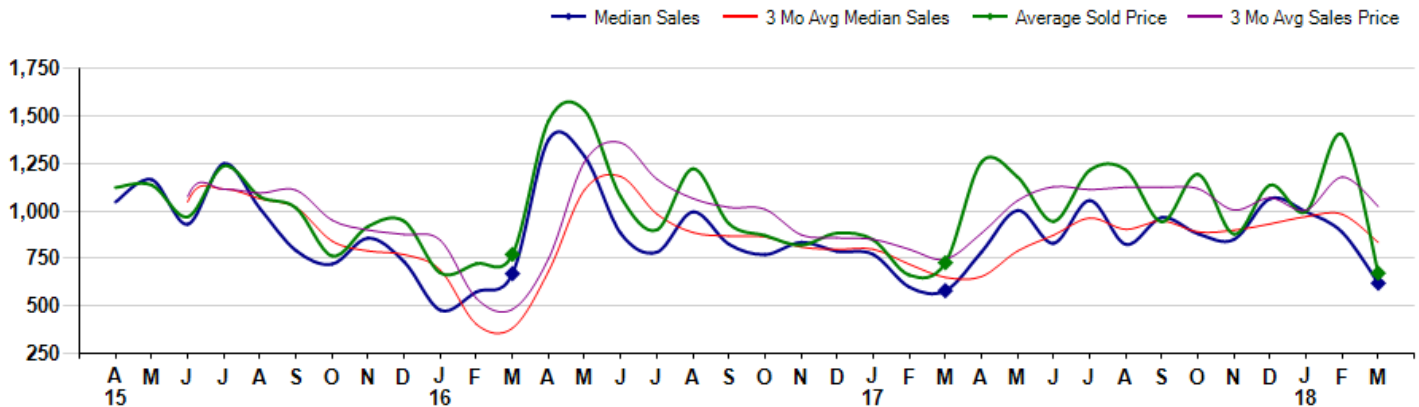
March Property sales were 14, up 180.0% from 5 in March of 2017 and 55.6% higher than the 9 sales last month. March 2018 sales were at their highest level compared to March of 2017 and 2016. March YTD sales of 36 are running 71.4% ahead of last year's year-to-date sales of 21.



### Prices

The Median Sales Price in March was \$619,500, up 6.8% from \$580,000 in March of 2017 and down -30.2% from \$887,500 last month. The Average Sales Price in March was \$672,429, down -7.6% from \$727,400 in March of 2017 and down -52.0% from \$1,401,944 last month. March 2018 ASP was at the lowest level compared to March of 2017 and 2016.

Median means Middle (the same # of properties sold above and below Median) (000's)



© 2018 Coldwell Banker Residential Brokerage. All Rights Reserved. Coldwell Banker Residential Brokerage fully supports the principles of the Fair Housing Act and the Equal Opportunity Act. Coldwell Banker Residential Brokerage is operated by a subsidiary of NRT LLC. Coldwell Banker and the Coldwell Banker Logo are registered service marks owned by Coldwell Banker Real Estate LLC.

Based on information from Midwest Real Estate Data LLC for the period 4/1/2015 through 3/31/2018. Due to MLS reporting methods and allowable reporting policy, this data is only informational and may not be completely accurate. Therefore, Coldwell Banker Residential Brokerage does not guarantee the data accuracy. Data maintained by the MLS's may not reflect all real estate activity in the market.



## MLS Area: Glencoe



**ART WILSON**  
 Broker, Realtor  
 847-363-1599  
 www.NorthShoreHomesOnline.com  
 Art.Wilson@cbexchange.com



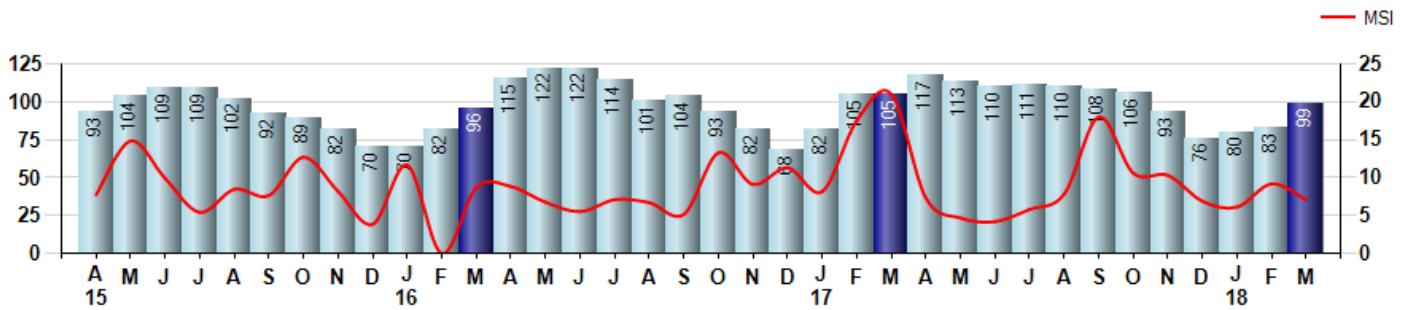
Price Range: 0 to 999999999 | Properties: Single Family Home, Townhome, Condo

### Inventory & MSI

The Total Inventory of Properties available for sale as of March was 99, up 19.3% from 83 last month and down -5.7% from 105 in March of last year. March 2018 Inventory was at a mid range compared to March of 2017 and 2016.

A comparatively lower MSI is more beneficial for sellers while a higher MSI is better for buyers. The March 2018 MSI of 7.1 months was at its lowest level compared with March of 2017 and 2016.

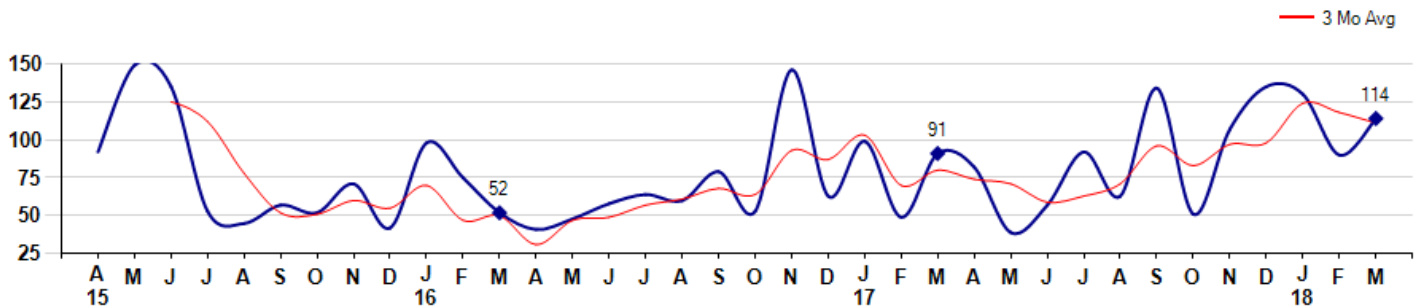
MSI is the # of months needed to sell all of the Inventory at the monthly Sales Pace



### Market Time

The average Days On Market(DOM) shows how many days the average Property is on the Market before it sells. An upward trend in DOM tends to indicate a move towards more of a Buyer's market, a downward trend a move towards more of a Seller's market. The DOM for March was 114, up 26.7% from 90 days last month and up 25.3% from 91 days in March of last year. The March 2018 DOM was at its highest level compared with March of 2017 and 2016.

Average Days on Market(Listing to Contract) for properties sold during the month



## MLS Area: Glencoe



**ART WILSON**  
 Broker, Realtor  
 847-363-1599  
 www.NorthShoreHomesOnline.com  
 Art.Wilson@cbexchange.com

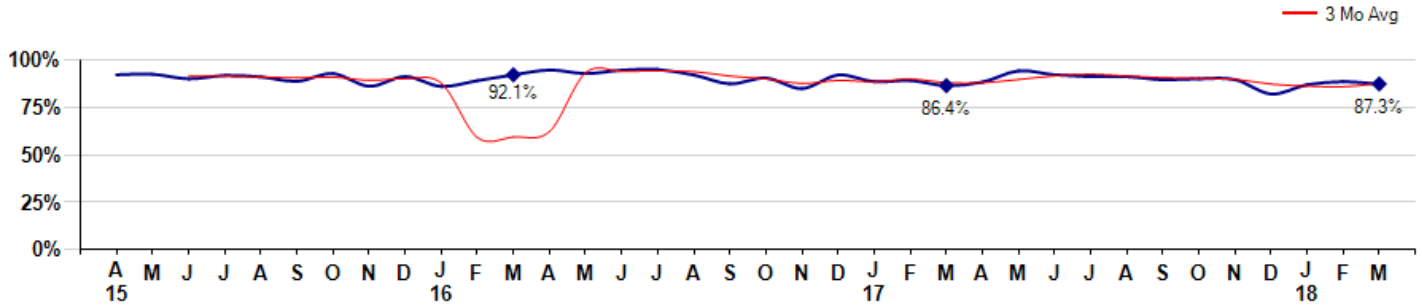


Price Range: 0 to 999999999 | Properties: Single Family Home, Townhome, Condo

### Selling Price vs Listing Price

The Selling Price vs Listing Price reveals the average amount that Sellers are agreeing to come down from their list price. The lower the ratio is below 100% the more of a Buyer's market exists, a ratio at or above 100% indicates more of a Seller's market. The March 2018 Selling Price vs List Price of 87.3% was down from 88.5% last month and up from 86.4% in March of last year.

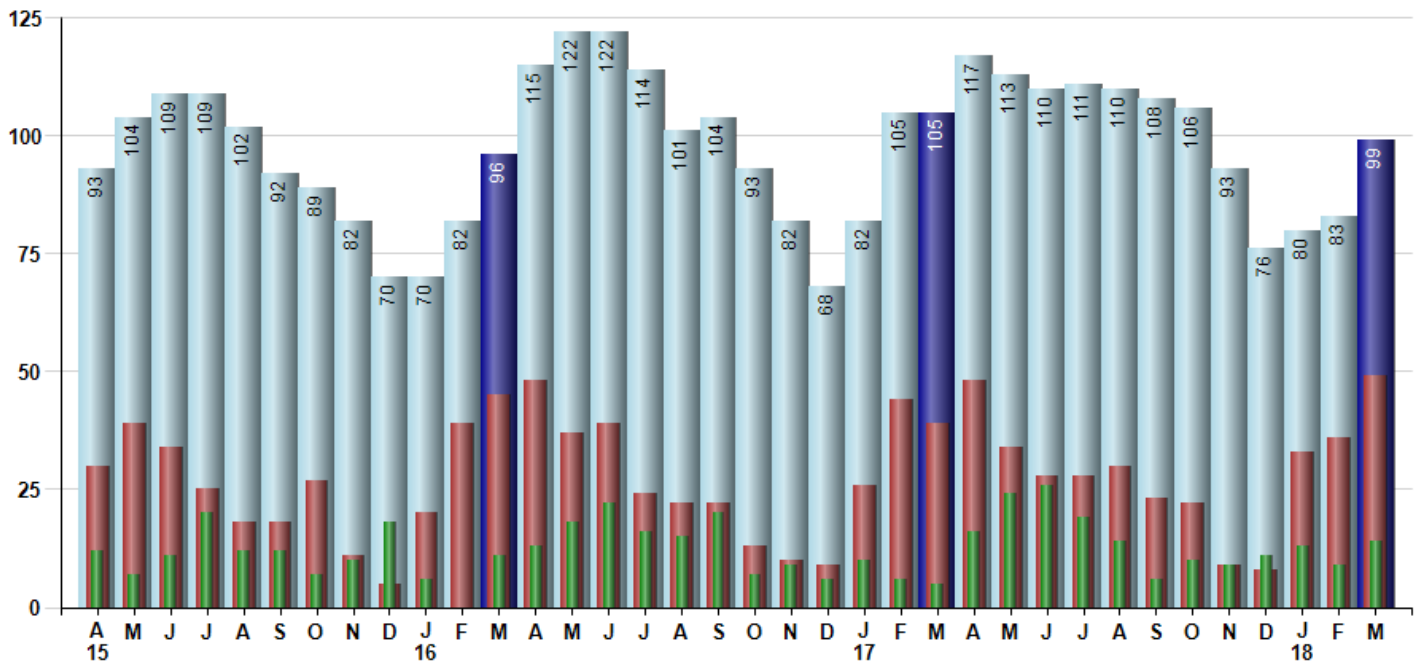
Avg Selling Price divided by Avg Listing Price for sold properties during the month



### Inventory / New Listings / Sales

This last view of the market combines monthly inventory of Properties for sale along with New Listings and Sales. The graph shows the basic annual seasonality of the market as well as the relationship between these items. The number of New Listings in March 2018 was 49, up 36.1% from 36 last month and up 25.6% from 39 in March of last year.

Inventory (light blue), New Listings (red), Sold (green)



© 2018 Coldwell Banker Residential Brokerage. All Rights Reserved. Coldwell Banker Residential Brokerage fully supports the principles of the Fair Housing Act and the Equal Opportunity Act. Coldwell Banker Residential Brokerage is operated by a subsidiary of NRT LLC. Coldwell Banker and the Coldwell Banker Logo are registered service marks owned by Coldwell Banker Real Estate LLC.

Based on information from Midwest Real Estate Data LLC for the period 4/1/2015 through 3/31/2018. Due to MLS reporting methods and allowable reporting policy, this data is only informational and may not be completely accurate. Therefore, Coldwell Banker Residential Brokerage does not guarantee the data accuracy. Data maintained by the MLS's may not reflect all real estate activity in the market.



# MARKET ACTION REPORT

March 2018

## MLS Area: Glencoe



**ART WILSON**  
 Broker, Realtor  
 847-363-1599  
 www.NorthShoreHomesOnline.com  
 Art.Wilson@cbexchange.com



Price Range: 0 to 999999999 | Properties: Single Family Home, Townhome, Condo

	A 15	M	J	J	A	S	O	N	D	J 16	F	M	A	M	J	J	A	S	O	N	D	J 17	F	M	A	M	J	J	A	S	O	N	D	J 18	F	M
Homes Sold	12	7	11	20	12	12	7	10	18	6	0	11	13	18	22	16	15	20	7	9	6	10	6	5	16	24	26	19	14	6	10	9	11	13	9	14
3 Mo. Roll Avg			10	13	14	15	10	10	12	11	8	6	8	14	18	19	18	17	14	12	7	8	7	7	9	15	22	23	20	13	10	8	10	11	11	12

	(000's) A 15	M	J	J	A	S	O	N	D	J 16	F	M	A	M	J	J	A	S	O	N	D	J 17	F	M	A	M	J	J	A	S	O	N	D	J 18	F	M
Median Sale Price	1,048	1,165	930	1,250	1,013	791	720	857	733	478	0	670	1,375	1,288	883	783	995	825	770	835	788	771	599	580	784	1,003	830	1,055	824	965	880	850	1,065	995	888	620
3 Mo. Roll Avg			1,048	1,115	1,064	1,018	841	789	770	689	403	383	682	1,111	1,182	984	887	867	863	810	798	798	719	650	654	789	872	963	903	948	890	898	932	970	983	834

	A 15	M	J	J	A	S	O	N	D	J 16	F	M	A	M	J	J	A	S	O	N	D	J 17	F	M	A	M	J	J	A	S	O	N	D	J 18	F	M
Inventory	93	104	109	109	102	92	89	82	70	70	82	96	115	122	122	114	101	104	93	82	68	82	105	105	117	113	110	111	110	108	106	93	76	80	83	99
MSI	8	15	10	5	9	8	13	8	4	12	0	9	9	7	6	7	7	5	13	9	11	8	18	21	7	5	4	6	8	18	11	10	7	6	9	7

	A 15	M	J	J	A	S	O	N	D	J 16	F	M	A	M	J	J	A	S	O	N	D	J 17	F	M	A	M	J	J	A	S	O	N	D	J 18	F	M
Days On Market	92	149	135	53	45	57	52	71	42	98	0	52	41	48	58	64	60	79	53	146	63	99	49	91	82	39	57	92	63	134	51	107	135	130	90	114
3 Mo. Roll Avg			125	112	78	52	51	60	55	70	47	50	31	47	49	57	61	68	64	93	87	103	70	80	74	71	59	63	71	96	83	97	98	124	118	111

	A 15	M	J	J	A	S	O	N	D	J 16	F	M	A	M	J	J	A	S	O	N	D	J 17	F	M	A	M	J	J	A	S	O	N	D	J 18	F	M
Price per Sq Ft	292	351	286	310	315	255	253	306	272	265	0	242	343	339	310	279	324	294	307	273	261	253	227	288	226	309	324	345	310	271	252	250	235	267	351	240
3 Mo. Roll Avg			310	316	304	293	274	271	277	281	179	169	195	308	331	309	304	299	308	291	280	262	247	256	247	274	286	326	326	309	278	258	246	251	284	286

	A 15	M	J	J	A	S	O	N	D	J 16	F	M	A	M	J	J	A	S	O	N	D	J 17	F	M	A	M	J	J	A	S	O	N	D	J 18	F	M
Sale to List Price	0.921	0.924	0.900	0.918	0.910	0.887	0.928	0.861	0.912	0.860	0.000	0.921	0.946	0.928	0.945	0.949	0.920	0.874	0.904	0.849	0.920	0.885	0.891	0.864	0.883	0.942	0.921	0.911	0.911	0.895	0.900	0.896	0.820	0.869	0.885	0.873
3 Mo. Roll Avg			0.915	0.914	0.909	0.905	0.908	0.892	0.900	0.878	0.591	0.594	0.622	0.932	0.940	0.941	0.938	0.914	0.899	0.876	0.891	0.885	0.899	0.880	0.879	0.896	0.915	0.925	0.914	0.906	0.902	0.897	0.872	0.862	0.858	0.876

	A 15	M	J	J	A	S	O	N	D	J 16	F	M	A	M	J	J	A	S	O	N	D	J 17	F	M	A	M	J	J	A	S	O	N	D	J 18	F	M
New Listings	30	39	34	25	18	18	27	11	5	20	39	45	48	37	39	24	22	13	10	9	26	44	39	48	34	28	28	30	23	22	9	8	33	36	49	
Inventory	93	104	109	109	102	92	89	82	70	70	82	96	115	122	122	114	101	104	93	82	68	82	105	105	117	113	110	111	110	108	106	93	76	80	83	99
Sales	12	7	11	20	12	12	7	10	18	6	0	11	13	18	22	16	15	20	7	9	6	10	6	5	16	24	26	19	14	6	10	9	11	13	9	14

	(000's) A 15	M	J	J	A	S	O	N	D	J 16	F	M	A	M	J	J	A	S	O	N	D	J 17	F	M	A	M	J	J	A	S	O	N	D	J 18	F	M
Avg Sale Price	1,123	1,136	969	1,237	1,075	1,016	763	919	946	674	0	771	1,475	1,529	1,075	900	1,222	933	871	820	883	848	662	727	1,257	1,178	945	1,214	1,216	943	1,193	878	1,136	998	1,402	672
3 Mo. Roll Avg			1,076	1,114	1,094	1,109	951	899	876	846	540	482	749	1,258	1,359	1,168	1,066	1,018	1,009	875	858	850	798	746	882	1,054	1,127	1,113	1,125	1,124	1,117	1,005	1,069	1,004	1,178	1,024

© 2018 Coldwell Banker Residential Brokerage. All Rights Reserved. Coldwell Banker Residential Brokerage fully supports the principles of the Fair Housing Act and the Equal Opportunity Act. Coldwell Banker Residential Brokerage is operated by a subsidiary of NRT LLC. Coldwell Banker and the Coldwell Banker Logo are registered service marks owned by Coldwell Banker Real Estate LLC.

Based on information from Midwest Real Estate Data LLC for the period 4/1/2015 through 3/31/2018. Due to MLS reporting methods and allowable reporting policy, this data is only informational and may not be completely accurate. Therefore, Coldwell Banker Residential Brokerage does not guarantee the data accuracy. Data maintained by the MLS's may not reflect all real estate activity in the market.

