

## MLS Area: Wilmette



**ART WILSON**  
 Broker, Realtor  
 847-363-1599  
 www.NorthShoreHomesOnline.com  
 Art.Wilson@cbexchange.com



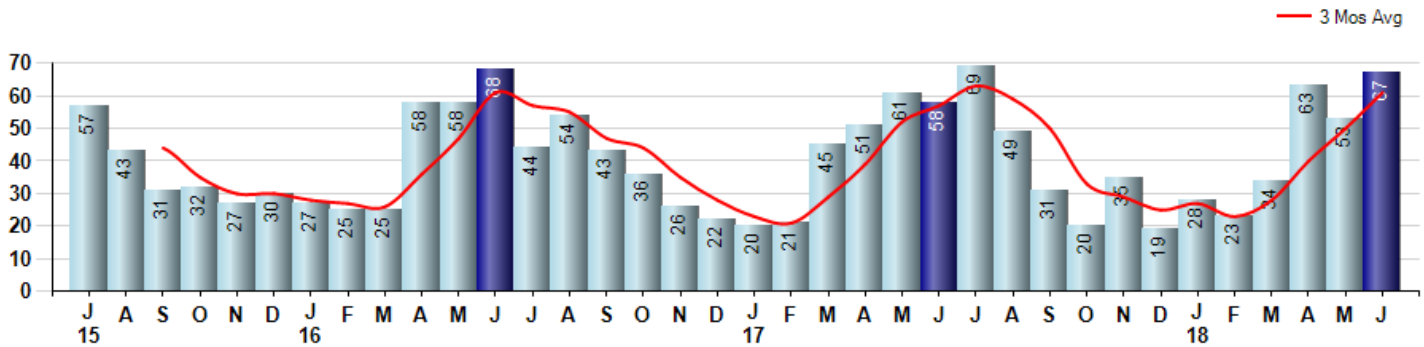
Price Range: 0 to 999999999 | Properties: Single Family Home, Townhome, Condo

Market Profile & Trends Overview	Month	Trending Versus*:				YTD	Trending Versus*:	
		LM	L3M	PYM	LY		PriorYTD	PriorYear
Median List Price of all Current Listings	\$775,000	↓		↔				
Average List Price of all Current Listings	\$914,806	↓		↓				
June Median Sales Price	\$880,000	↑	↑	↑	↑	\$717,500	↑	↑
June Average Sales Price	\$953,944	↑	↑	↑	↑	\$833,227	↑	↑
Total Properties Currently for Sale (Inventory)	201	↓		↔				
June Number of Properties Sold	67	↑		↑		268	↑	
June Average Days on Market (Solds)	43	↑	↓	↓	↓	53	↓	↓
June Month's Supply of Inventory	3.0	↓		↓	↓	4.4	↓	↓
June Sale Price vs List Price Ratio	95.0%	↓	↔	↑	↑	94.5%	↑	↑

\* LM=Last Month / L3M=Last 3 Months / PYM=Same Month Prior Year / LY=Last Year / YTD = Year-to-date

### Property Sales

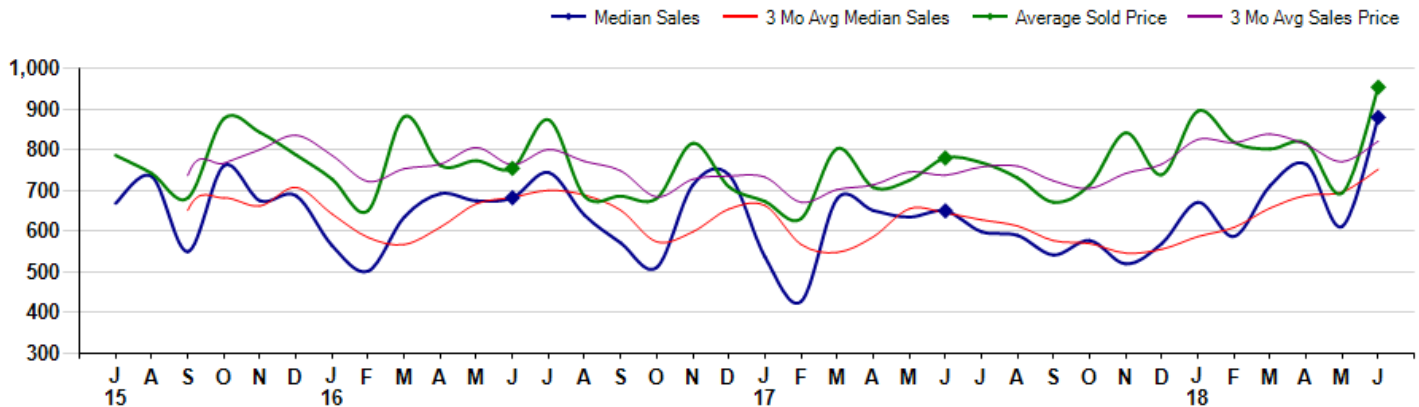
June Property sales were 67, up 15.5% from 58 in June of 2017 and 26.4% higher than the 53 sales last month. June 2018 sales were at a mid level compared to June of 2017 and 2016. June YTD sales of 268 are running 4.7% ahead of last year's year-to-date sales of 256.



### Prices

The Median Sales Price in June was \$880,000, up 35.4% from \$650,000 in June of 2017 and up 43.8% from \$612,000 last month. The Average Sales Price in June was \$953,944, up 22.3% from \$780,076 in June of 2017 and up 37.4% from \$694,172 last month. June 2018 ASP was at highest level compared to June of 2017 and 2016.

Median means Middle (the same # of properties sold above and below Median) (000's)



## MLS Area: Wilmette



**ART WILSON**  
 Broker, Realtor  
 847-363-1599  
 www.NorthShoreHomesOnline.com  
 Art.Wilson@cbexchange.com



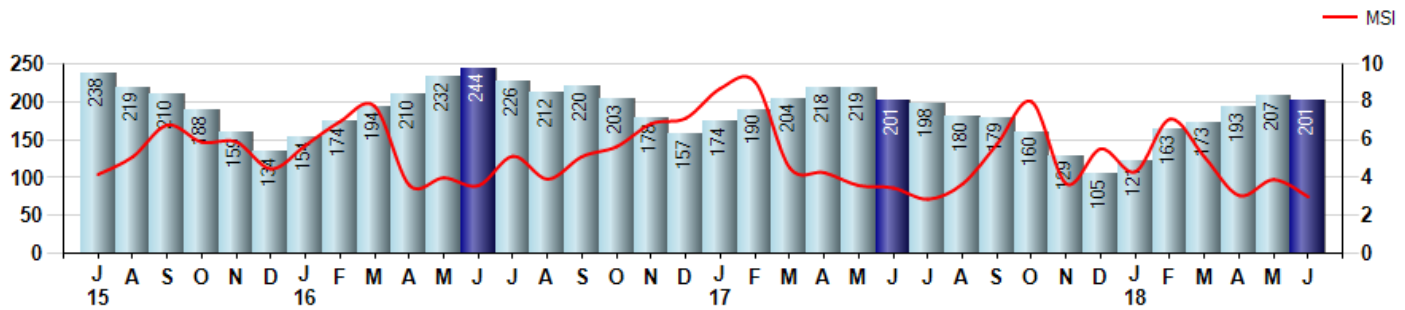
Price Range: 0 to 999999999 | Properties: Single Family Home, Townhome, Condo

### Inventory & MSI

The Total Inventory of Properties available for sale as of June was 201, down -2.9% from 207 last month and equal to 201 in June of last year. June 2018 Inventory was at the lowest level compared to June of 2017 and 2016.

A comparatively lower MSI is more beneficial for sellers while a higher MSI is better for buyers. The June 2018 MSI of 3.0 months was at its lowest level compared with June of 2017 and 2016.

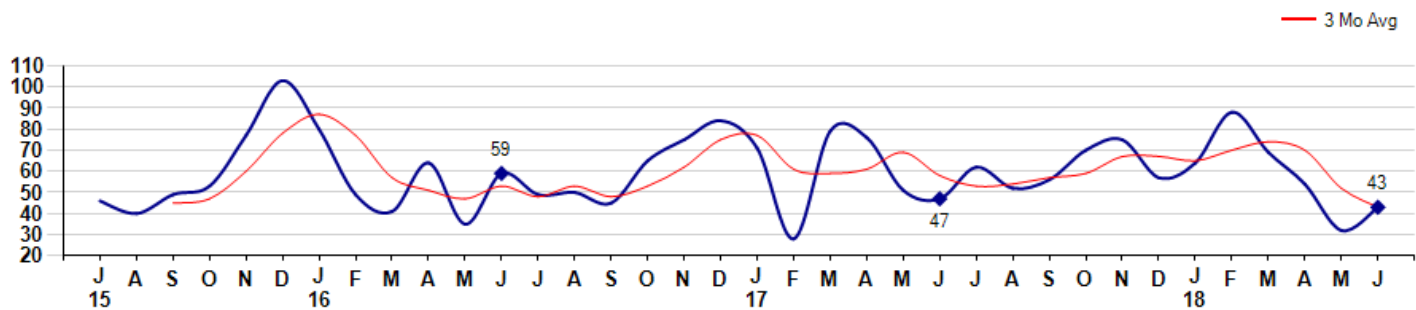
MSI is the # of months needed to sell all of the Inventory at the monthly Sales Pace



### Market Time

The average Days On Market(DOM) shows how many days the average Property is on the Market before it sells. An upward trend in DOM tends to indicate a move towards more of a Buyer's market, a downward trend a move towards more of a Seller's market. The DOM for June was 43, up 34.4% from 32 days last month and down -8.5% from 47 days in June of last year. The June 2018 DOM was at its lowest level compared with June of 2017 and 2016.

Average Days on Market(Listing to Contract) for properties sold during the month



## MLS Area: Wilmette



**ART WILSON**  
 Broker, Realtor  
 847-363-1599  
 www.NorthShoreHomesOnline.com  
 Art.Wilson@cbexchange.com

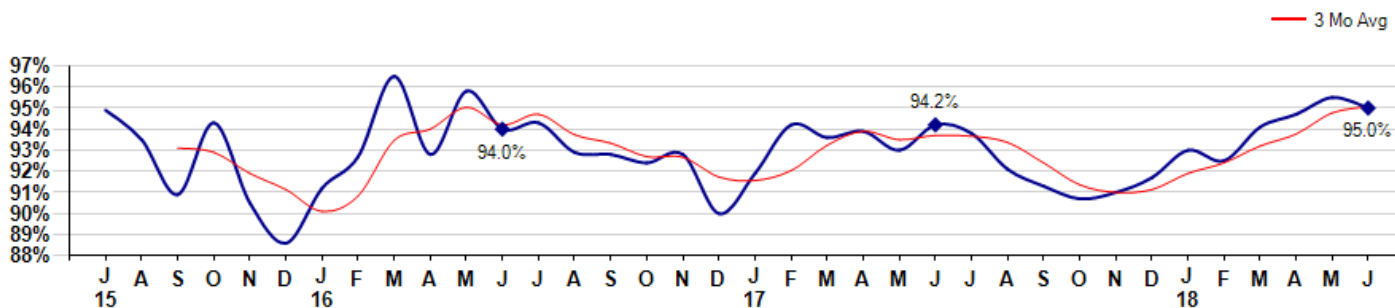


Price Range: 0 to 999999999 | Properties: Single Family Home, Townhome, Condo

### Selling Price vs Listing Price

The Selling Price vs Listing Price reveals the average amount that Sellers are agreeing to come down from their list price. The lower the ratio is below 100% the more of a Buyer's market exists, a ratio at or above 100% indicates more of a Seller's market. The June 2018 Selling Price vs List Price of 95.0% was down from 95.5% last month and up from 94.2% in June of last year.

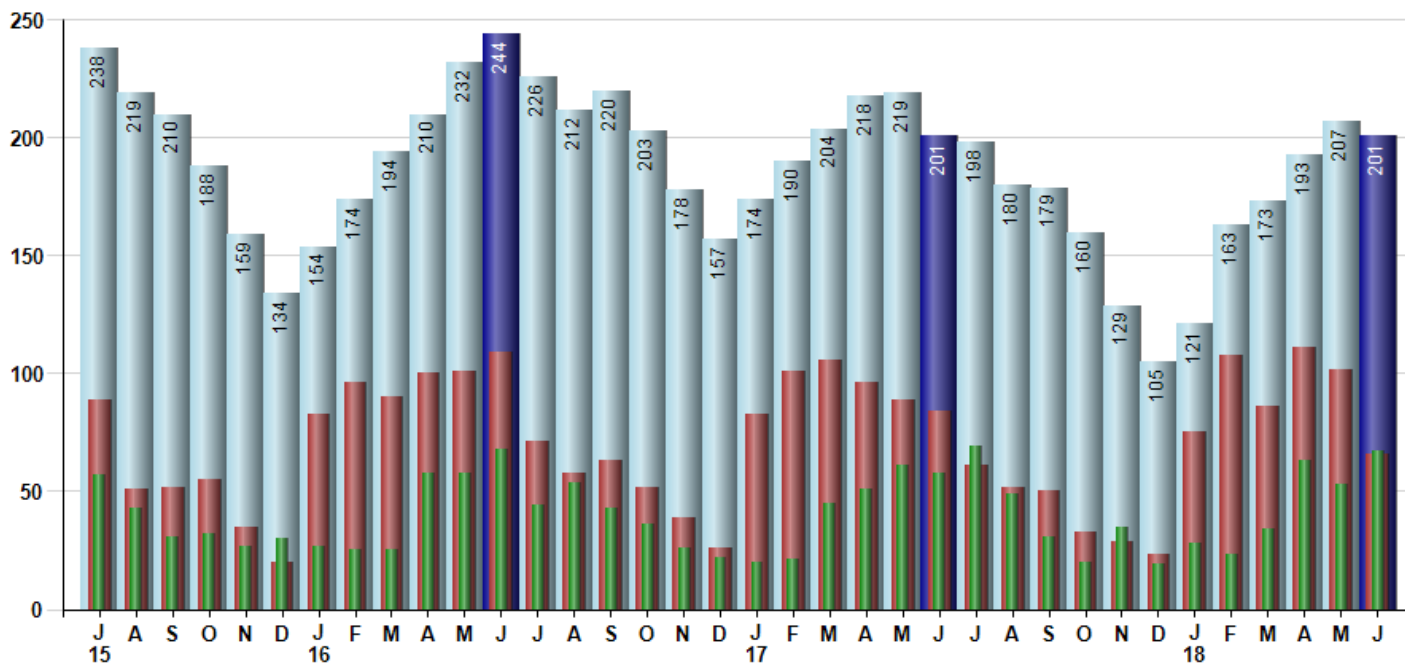
Avg Selling Price divided by Avg Listing Price for sold properties during the month



### Inventory / New Listings / Sales

This last view of the market combines monthly inventory of Properties for sale along with New Listings and Sales. The graph shows the basic annual seasonality of the market as well as the relationship between these items. The number of New Listings in June 2018 was 66, down -35.3% from 102 last month and down -21.4% from 84 in June of last year.

Inventory (light blue), New Listings (red), Sold (green)



© 2018 Coldwell Banker Residential Brokerage. All Rights Reserved. Coldwell Banker Residential Brokerage fully supports the principles of the Fair Housing Act and the Equal Opportunity Act. Coldwell Banker Residential Brokerage is operated by a subsidiary of NRT LLC. Coldwell Banker and the Coldwell Banker Logo are registered service marks owned by Coldwell Banker Real Estate LLC.

Based on information from Midwest Real Estate Data LLC for the period 7/1/2015 through 6/30/2018. Due to MLS reporting methods and allowable reporting policy, this data is only informational and may not be completely accurate. Therefore, Coldwell Banker Residential Brokerage does not guarantee the data accuracy. Data maintained by the MLS's may not reflect all real estate activity in the market.



# MARKET ACTION REPORT

June 2018

## MLS Area: Wilmette



**ART WILSON**  
 Broker, Realtor  
 847-363-1599  
 www.NorthShoreHomesOnline.com  
 Art.Wilson@cbexchange.com



Price Range: 0 to 999999999 | Properties: Single Family Home, Townhome, Condo

	J 15	A	S	O	N	D	J 16	F	M	A	M	J	J	A	S	O	N	D	J 17	F	M	A	M	J	J	A	S	O	N	D	J 18	F	M	A	M	J
Homes Sold	57	43	31	32	27	30	27	25	25	58	58	68	44	54	43	36	26	22	20	21	45	51	61	58	69	49	31	20	35	19	28	23	34	63	53	67
3 Mo. Roll Avg			44	35	30	30	28	27	26	36	47	61	57	55	47	44	35	28	23	21	29	39	52	57	63	59	50	33	29	25	27	23	28	40	50	61

	(000's) J 15	A	S	O	N	D	J 16	F	M	A	M	J	J	A	S	O	N	D	J 17	F	M	A	M	J	J	A	S	O	N	D	J 18	F	M	A	M	J
Median Sale Price	669	735	550	761	675	688	565	502	635	693	675	683	745	640	572	511	714	739	537	428	680	651	635	650	599	590	542	578	520	570	671	588	712	765	612	880
3 Mo. Roll Avg			651	682	662	708	643	585	567	610	667	683	701	689	652	574	599	655	663	568	548	586	655	645	628	613	577	570	546	556	587	610	657	688	696	752

	J 15	A	S	O	N	D	J 16	F	M	A	M	J	J	A	S	O	N	D	J 17	F	M	A	M	J	J	A	S	O	N	D	J 18	F	M	A	M	J
Inventory	238	219	210	188	159	134	154	174	194	210	232	244	226	212	220	203	178	157	174	190	204	218	219	201	198	180	179	160	129	105	121	163	173	193	207	201
MSI	4	5	7	6	6	4	6	7	8	4	4	4	5	4	5	6	7	7	9	9	5	4	4	3	3	4	6	8	4	6	4	7	5	3	4	3

	J 15	A	S	O	N	D	J 16	F	M	A	M	J	J	A	S	O	N	D	J 17	F	M	A	M	J	J	A	S	O	N	D	J 18	F	M	A	M	J
Days On Market	46	40	49	53	77	103	80	49	41	64	35	59	49	50	45	65	75	84	71	28	79	76	51	47	62	52	56	70	75	57	64	88	69	54	32	43
3 Mo. Roll Avg			45	47	60	78	87	77	57	51	47	53	48	53	48	53	62	75	77	61	59	61	69	58	53	54	57	59	67	67	65	70	74	70	52	43

	J 15	A	S	O	N	D	J 16	F	M	A	M	J	J	A	S	O	N	D	J 17	F	M	A	M	J	J	A	S	O	N	D	J 18	F	M	A	M	J
Price per Sq Ft	294	280	262	303	292	240	276	247	306	269	271	285	283	290	264	266	318	240	224	258	278	279	272	296	270	275	260	248	256	278	276	279	255	288	262	301
3 Mo. Roll Avg			279	282	286	278	269	254	276	274	282	275	280	286	279	273	283	275	261	241	253	272	276	282	279	280	268	261	255	261	270	278	270	274	268	284

	J 15	A	S	O	N	D	J 16	F	M	A	M	J	J	A	S	O	N	D	J 17	F	M	A	M	J	J	A	S	O	N	D	J 18	F	M	A	M	J
Sale to List Price	0.949	0.935	0.909	0.943	0.905	0.886	0.912	0.927	0.965	0.928	0.958	0.940	0.943	0.929	0.928	0.924	0.928	0.900	0.919	0.942	0.936	0.939	0.930	0.942	0.938	0.921	0.913	0.907	0.910	0.917	0.930	0.925	0.941	0.947	0.955	0.950
3 Mo. Roll Avg			0.931	0.929	0.919	0.911	0.901	0.908	0.935	0.940	0.950	0.942	0.947	0.937	0.933	0.927	0.927	0.917	0.916	0.920	0.932	0.939	0.935	0.937	0.937	0.934	0.924	0.914	0.910	0.911	0.919	0.924	0.932	0.938	0.948	0.951

	J 15	A	S	O	N	D	J 16	F	M	A	M	J	J	A	S	O	N	D	J 17	F	M	A	M	J	J	A	S	O	N	D	J 18	F	M	A	M	J
New Listings	89	51	52	55	35	20	83	96	90	100	101	109	71	58	63	52	39	26	83	101	106	96	89	84	61	52	50	33	29	23	75	108	86	111	102	66
Inventory	238	219	210	188	159	134	154	174	194	210	232	244	226	212	220	203	178	157	174	190	204	218	219	201	198	180	179	160	129	105	121	163	173	193	207	201
Sales	57	43	31	32	27	30	27	25	25	58	58	68	44	54	43	36	26	22	20	21	45	51	61	58	69	49	31	20	35	19	28	23	34	63	53	67

	(000's) J 15	A	S	O	N	D	J 16	F	M	A	M	J	J	A	S	O	N	D	J 17	F	M	A	M	J	J	A	S	O	N	D	J 18	F	M	A	M	J
Avg Sale Price	787	742	682	877	843	788	728	651	882	762	774	755	874	686	686	681	816	709	673	631	803	708	725	780	769	731	671	714	842	739	896	818	802	816	694	954
3 Mo. Roll Avg			737	767	801	836	786	722	754	765	806	763	801	772	749	684	728	736	733	671	702	714	745	738	758	760	724	705	742	765	826	818	839	812	771	821

© 2018 Coldwell Banker Residential Brokerage. All Rights Reserved. Coldwell Banker Residential Brokerage fully supports the principles of the Fair Housing Act and the Equal Opportunity Act. Coldwell Banker Residential Brokerage is operated by a subsidiary of NRT LLC. Coldwell Banker and the Coldwell Banker Logo are registered service marks owned by Coldwell Banker Real Estate LLC.

Based on information from Midwest Real Estate Data LLC for the period 7/1/2015 through 6/30/2018. Due to MLS reporting methods and allowable reporting policy, this data is only informational and may not be completely accurate. Therefore, Coldwell Banker Residential Brokerage does not guarantee the data accuracy. Data maintained by the MLS's may not reflect all real estate activity in the market.

