

MLS Area: Northbrook



ART WILSON

Broker, Realtor

847-363-1599

www.NorthShoreHomesOnline.com

Art.Wilson@cbexchange.com



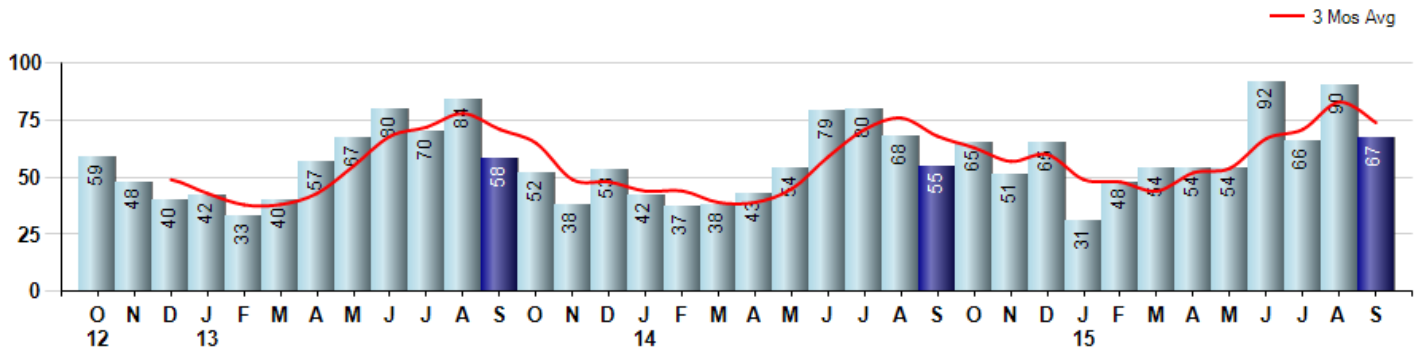
Price Range: \$0 to \$999,999,000 | Properties: Single Family Home, Townhome, Condo

Market Profile & Trends Overview	Month	Trending Versus*:				YTD	Trending Versus*:	
		LM	L3M	PYM	LY		PriorYTD	PriorYear
Median List Price of all Current Listings	\$572,450	↔		↑				
Average List Price of all Current Listings	\$720,124	↑		↑				
September Median Sales Price	\$430,000	↓	↓	↓	↔	\$445,000	↑	↑
September Average Sales Price	\$543,441	↑	↑	↑	↑	\$498,961	↑	↑
Total Properties Currently for Sale (Inventory)	282	↓		↓				
September Number of Properties Sold	67	↓		↑		556	↑	
September Average Days on Market (Solds)	47	↑	↑	↑	↓	55	↑	↑
September Month's Supply of Inventory	4.2	↑	↑	↓	↓	4.6	↓	↔
September Sale Price vs List Price Ratio	97.3%	↑	↑	↑	↑	96.2%	↑	↑

* LM=Last Month / L3M=Last 3 Months / PYM=Same Month Prior Year / LY=Last Year / YTD = Year-to-date

Property Sales

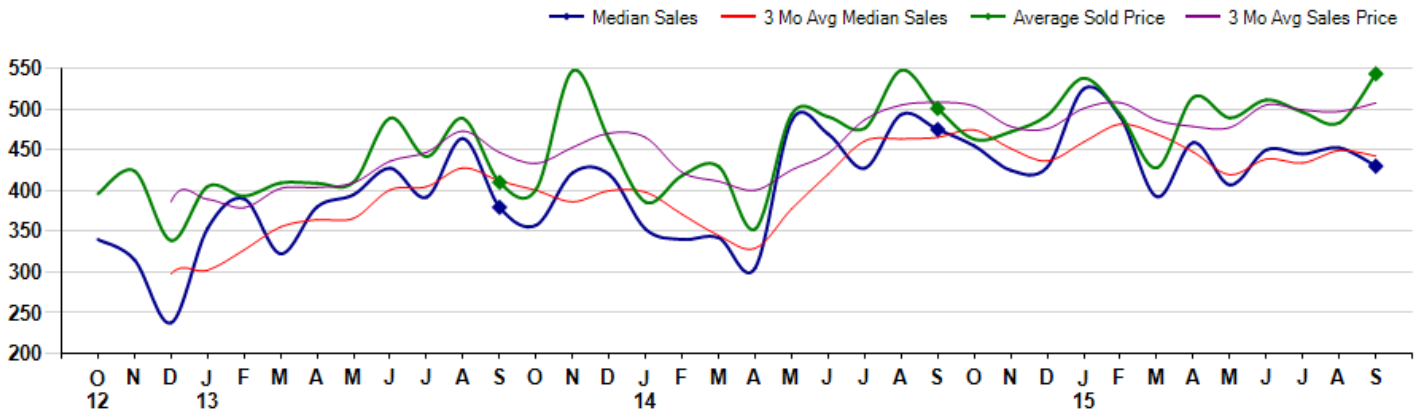
September Property sales were 67, up 21.8% from 55 in September of 2014 and -25.6% lower than the 90 sales last month. September 2015 sales were at their highest level compared to September of 2014 and 2013. September YTD sales of 556 are running 12.1% ahead of last year's year-to-date sales of 496.



Prices

The Median Sales Price in September was \$430,000, down -9.5% from \$475,000 in September of 2014 and down -5.0% from \$452,500 last month. The Average Sales Price in September was \$543,441, up 8.5% from \$500,808 in September of 2014 and up 12.4% from \$483,390 last month. September 2015 ASP was at highest level compared to September of 2014 and 2013.

Median means Middle (the same # of properties sold above and below Median) (000's)



MLS Area: Northbrook



ART WILSON

Broker, Realtor

847-363-1599

www.NorthShoreHomesOnline.com

Art.Wilson@cbexchange.com



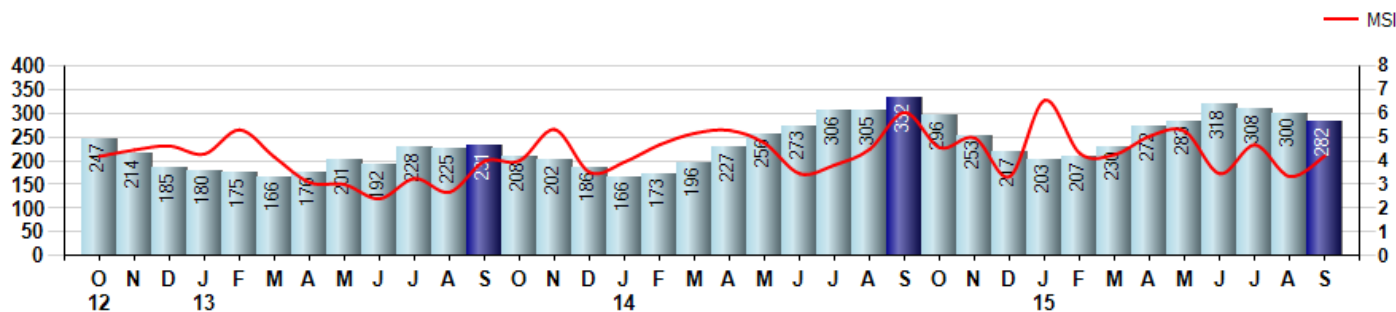
Price Range: \$0 to \$999,999,000 | Properties: Single Family Home, Townhome, Condo

Inventory & MSI

The Total Inventory of Properties available for sale as of September was 282, down -6.0% from 300 last month and down -15.1% from 332 in September of last year. September 2015 Inventory was at a mid range compared to September of 2014 and 2013.

A comparatively lower MSI is more beneficial for sellers while a higher MSI is better for buyers. The September 2015 MSI of 4.2 months was at a mid range compared with September of 2014 and 2013.

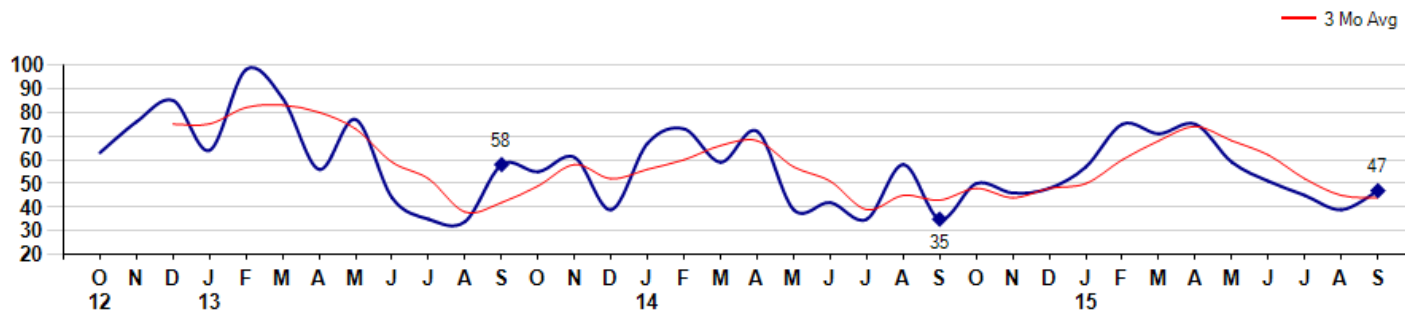
MSI is the # of months needed to sell all of the Inventory at the monthly Sales Pace



Market Time

The average Days On Market(DOM) shows how many days the average Property is on the Market before it sells. An upward trend in DOM tends to indicate a move towards more of a Buyer's market, a downward trend a move towards more of a Seller's market. The DOM for September was 47, up 20.5% from 39 days last month and up 34.3% from 35 days in September of last year. The September 2015 DOM was at a mid range compared with September of 2014 and 2013.

Average Days on Market(Listing to Contract) for properties sold during the month



MLS Area: Northbrook



ART WILSON

Broker, Realtor

847-363-1599

www.NorthShoreHomesOnline.com

Art.Wilson@cbexchange.com

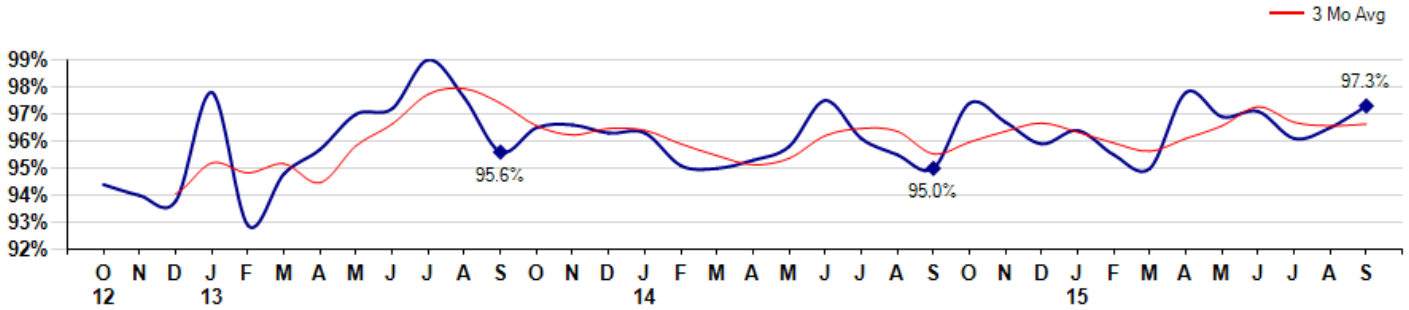


Price Range: \$0 to \$999,999,000 | Properties: Single Family Home, Townhome, Condo

Selling Price vs Listing Price

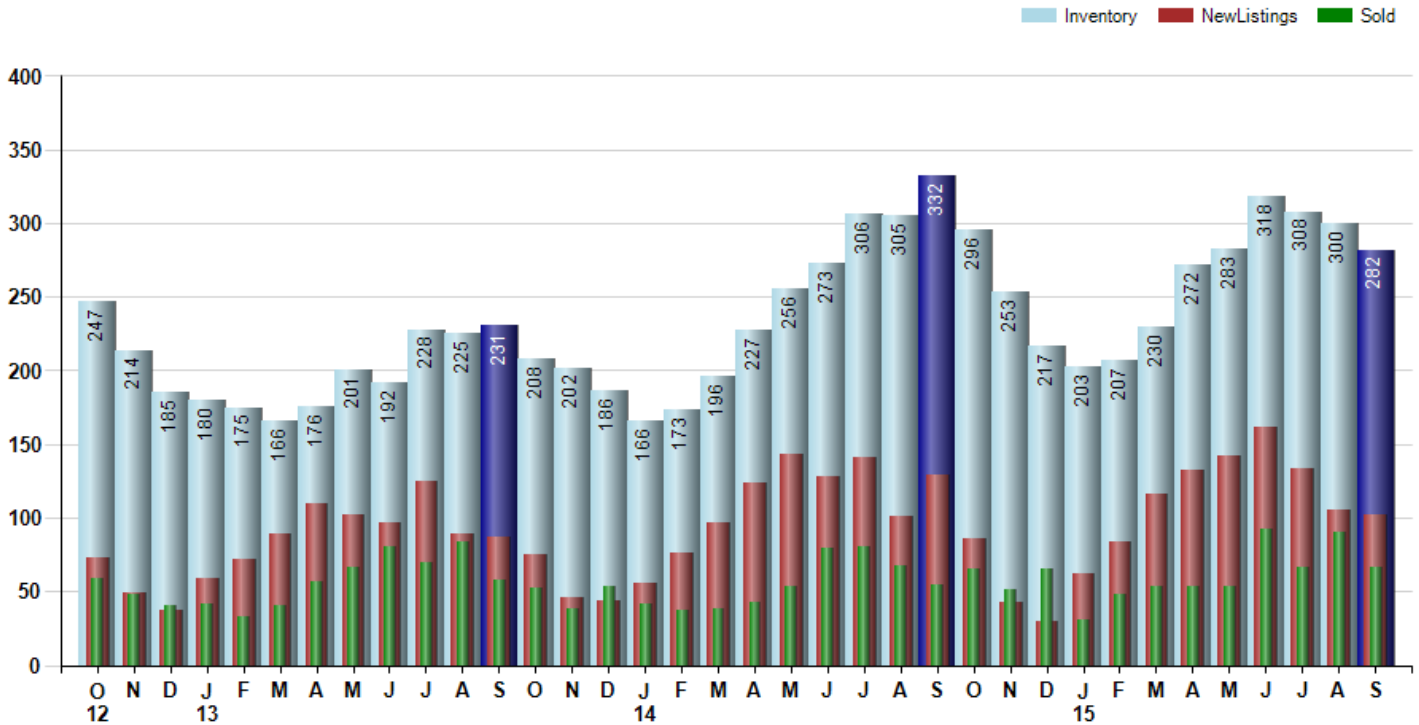
The Selling Price vs Listing Price reveals the average amount that Sellers are agreeing to come down from their list price. The lower the ratio is below 100% the more of a Buyer's market exists, a ratio at or above 100% indicates more of a Seller's market. The September 2015 Selling Price vs List Price of 97.3% was up from 96.5% last month and up from 95.0% in September of last year.

Avg Selling Price divided by Avg Listing Price for sold properties during the month



Inventory / New Listings / Sales

This last view of the market combines monthly inventory of Properties for sale along with New Listings and Sales. The graph shows the basic annual seasonality of the market as well as the relationship between these items. The number of New Listings in September 2015 was 102, down -2.9% from 105 last month and down -20.9% from 129 in September of last year.



© 2015 Coldwell Banker Real Estate LLC. All Rights Reserved. Coldwell Banker Residential Brokerage fully supports the principles of the Fair Housing Act and the Equal Opportunity Act. Coldwell Banker Residential Brokerage is operated by a subsidiary of NRT LLC. Coldwell Banker and the Coldwell Banker Logo are registered service marks owned by Coldwell Banker Real Estate LLC.

Based on information from Midwest Real Estate Data LLC for the period 10/1/2012 through 9/30/2015. Due to MLS reporting methods and allowable reporting policy, this data is only informational and may not be completely accurate. Therefore, Coldwell Banker Residential Brokerage does not guarantee the data accuracy. Data maintained by the MLS's may not reflect all real estate activity in the market.



MARKET ACTION REPORT

September 2015

MLS Area: Northbrook



ART WILSON
 Broker, Realtor
 847-363-1599
 www.NorthShoreHomesOnline.com
 Art.Wilson@cbexchange.com



Price Range: \$0 to \$999,999,000 | Properties: Single Family Home, Townhome, Condo

	O 12	N	D	J 13	F	M	A	M	J	J	A	S	O	N	D	J 14	F	M	A	M	J	J	A	S	O	N	D	J 15	F	M	A	M	J	J	A	S
Homes Sold	59	48	40	42	33	40	57	67	80	70	84	58	52	38	53	42	37	38	43	54	79	80	68	55	65	51	65	31	48	54	54	54	92	66	90	67
3 Mo. Roll Avg			49	43	38	38	43	55	68	72	78	71	65	49	48	44	44	39	39	45	59	71	76	68	63	57	60	49	48	44	52	54	67	71	83	74

	(000's) O 12	N	D	J 13	F	M	A	M	J	J	A	S	O	N	D	J 14	F	M	A	M	J	J	A	S	O	N	D	J 15	F	M	A	M	J	J	A	S
Median Sale Price	340	315	238	354	390	323	380	395	428	392	464	380	358	422	420	353	340	342	305	486	470	428	494	475	455	425	429	525	491	393	459	407	450	445	453	430
3 Mo. Roll Avg			298	302	327	355	364	366	401	405	428	412	400	386	400	398	371	345	329	378	420	461	464	465	475	452	436	460	482	469	447	420	439	434	449	443

	O 12	N	D	J 13	F	M	A	M	J	J	A	S	O	N	D	J 14	F	M	A	M	J	J	A	S	O	N	D	J 15	F	M	A	M	J	J	A	S
Inventory	247	214	185	180	175	166	176	201	192	228	225	231	208	202	186	166	173	196	227	256	273	306	305	332	296	253	217	203	207	230	272	283	318	308	300	282
MSI	4	4	5	4	5	4	3	3	2	3	3	4	4	5	4	4	5	5	5	5	3	4	4	6	5	5	3	7	4	4	5	5	3	5	3	4

	O 12	N	D	J 13	F	M	A	M	J	J	A	S	O	N	D	J 14	F	M	A	M	J	J	A	S	O	N	D	J 15	F	M	A	M	J	J	A	S
Days On Market	63	76	85	64	98	86	56	77	44	35	34	58	55	61	39	67	73	59	72	39	42	35	58	35	50	46	48	57	75	71	75	59	51	45	39	47
3 Mo. Roll Avg			75	75	82	83	80	73	59	52	38	42	49	58	52	56	60	66	68	57	51	39	45	43	48	44	48	50	60	68	74	68	62	52	45	44

	O 12	N	D	J 13	F	M	A	M	J	J	A	S	O	N	D	J 14	F	M	A	M	J	J	A	S	O	N	D	J 15	F	M	A	M	J	J	A	S
Price per Sq Ft	167	173	144	176	158	172	186	207	198	186	187	188	182	182	179	184	180	208	192	206	226	210	210	210	194	200	206	207	207	197	208	210	207	202	207	204
3 Mo. Roll Avg			161	164	159	169	172	188	197	197	190	187	186	184	181	182	181	191	193	202	208	214	215	210	205	201	200	204	207	204	204	205	208	206	205	204

	O 12	N	D	J 13	F	M	A	M	J	J	A	S	O	N	D	J 14	F	M	A	M	J	J	A	S	O	N	D	J 15	F	M	A	M	J	J	A	S
Sale to List Price	0.944	0.940	0.938	0.978	0.929	0.948	0.957	0.970	0.972	0.990	0.976	0.956	0.965	0.966	0.963	0.963	0.951	0.950	0.953	0.958	0.975	0.961	0.955	0.950	0.974	0.967	0.959	0.964	0.955	0.950	0.978	0.969	0.971	0.961	0.965	0.973
3 Mo. Roll Avg			0.941	0.952	0.948	0.952	0.945	0.958	0.966	0.977	0.979	0.974	0.966	0.962	0.965	0.964	0.959	0.955	0.951	0.954	0.962	0.965	0.964	0.955	0.960	0.964	0.967	0.963	0.959	0.956	0.961	0.966	0.973	0.967	0.966	0.966

	O 12	N	D	J 13	F	M	A	M	J	J	A	S	O	N	D	J 14	F	M	A	M	J	J	A	S	O	N	D	J 15	F	M	A	M	J	J	A	S
New Listings	73	49	37	59	72	89	110	102	97	125	89	87	75	46	44	56	76	97	124	143	128	141	101	129	86	43	30	62	84	116	132	142	162	134	105	102
Inventory	247	214	185	180	175	166	176	201	192	228	225	231	208	202	186	166	173	196	227	256	273	306	305	332	296	253	217	203	207	230	272	283	318	308	300	282
Sales	59	48	40	42	33	40	57	67	80	70	84	58	52	38	53	42	37	38	43	54	79	80	68	55	65	51	65	31	48	54	54	54	92	66	90	67

	(000's) O 12	N	D	J 13	F	M	A	M	J	J	A	S	O	N	D	J 14	F	M	A	M	J	J	A	S	O	N	D	J 15	F	M	A	M	J	J	A	S
Avg Sale Price	396	424	339	405	393	409	409	410	489	442	489	410	402	547	463	386	419	430	353	494	491	477	548	501	463	472	492	538	493	428	515	489	511	496	483	543
3 Mo. Roll Avg			386	389	379	403	404	410	436	447	473	447	433	453	471	465	422	411	400	425	446	487	505	508	504	479	476	501	508	487	479	477	505	499	497	508

© 2015 Coldwell Banker Real Estate LLC. All Rights Reserved. Coldwell Banker Residential Brokerage fully supports the principles of the Fair Housing Act and the Equal Opportunity Act. Coldwell Banker Residential Brokerage is operated by a subsidiary of NRT LLC. Coldwell Banker and the Coldwell Banker Logo are registered service marks owned by Coldwell Banker Real Estate LLC.

Based on information from Midwest Real Estate Data LLC for the period 10/1/2012 through 9/30/2015. Due to MLS reporting methods and allowable reporting policy, this data is only informational and may not be completely accurate. Therefore, Coldwell Banker Residential Brokerage does not guarantee the data accuracy. Data maintained by the MLS's may not reflect all real estate activity in the market.

