

MLS Area: Highland Park



ART WILSON
 Broker, Realtor
 847-363-1599
 www.NorthShoreHomesOnline.com
 Art.Wilson@cbexchange.com



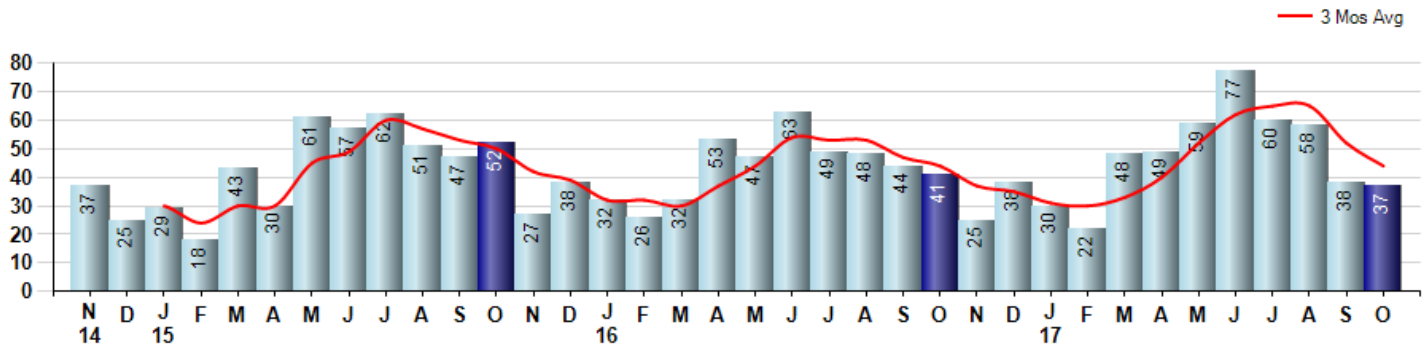
Price Range: 0 to 999999999 | Properties: Single Family Home, Townhome, Condo

Market Profile & Trends Overview	Month	Trending Versus*:				YTD	Trending Versus*:	
		LM	L3M	PYM	LY		PriorYTD	PriorYear
Median List Price of all Current Listings	\$689,000	↓		↓				
Average List Price of all Current Listings	\$988,369	↑		↑				
October Median Sales Price	\$465,000	↑	↓	↑	↓	\$480,000	↓	↓
October Average Sales Price	\$639,643	↑	↑	↑	↑	\$575,930	↔	↔
Total Properties Currently for Sale (Inventory)	323	↓		↓				
October Number of Properties Sold	37	↓		↓		478	↑	
October Average Days on Market (Solds)	72	↓	↑	↓	↓	78	↑	↑
October Month's Supply of Inventory	8.7	↓	↑	↑	↑	7.9	↔	↓
October Sale Price vs List Price Ratio	93.0%	↑	↑	↑	↑	91.4%	↓	↑

* LM=Last Month / L3M=Last 3 Months / PYM=Same Month Prior Year / LY=Last Year / YTD = Year-to-date

Property Sales

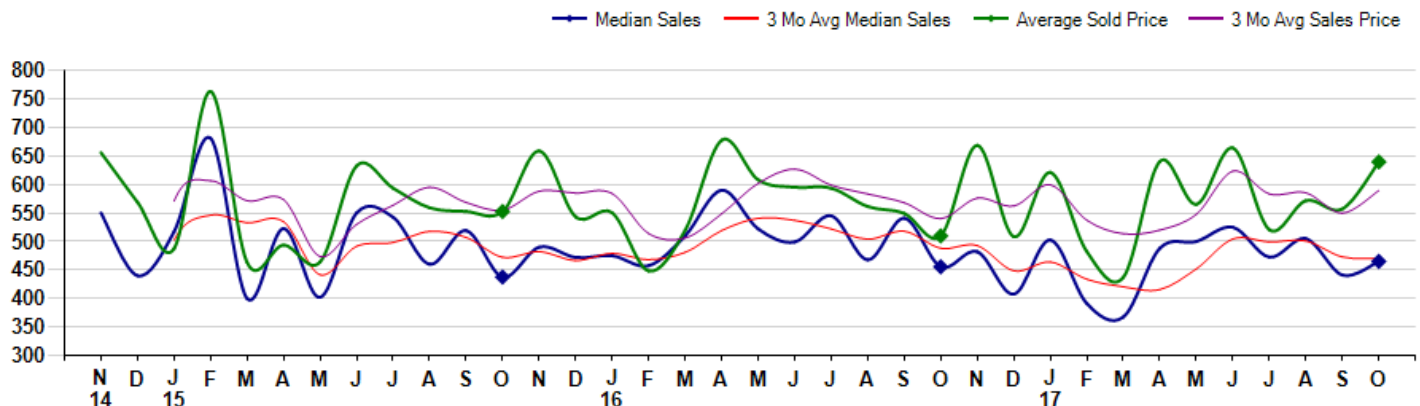
October Property sales were 37, down -9.8% from 41 in October of 2016 and -2.6% lower than the 38 sales last month. October 2017 sales were at their lowest level compared to October of 2016 and 2015. October YTD sales of 478 are running 9.9% ahead of last year's year-to-date sales of 435.



Prices

The Median Sales Price in October was \$465,000, up 2.1% from \$455,500 in October of 2016 and up 5.4% from \$441,000 last month. The Average Sales Price in October was \$639,643, up 25.5% from \$509,693 in October of 2016 and up 14.8% from \$557,021 last month. October 2017 ASP was at highest level compared to October of 2016 and 2015.

Median means Middle (the same # of properties sold above and below Median) (000's)



MLS Area: Highland Park



ART WILSON
 Broker, Realtor
 847-363-1599
 www.NorthShoreHomesOnline.com
 Art.Wilson@cbexchange.com



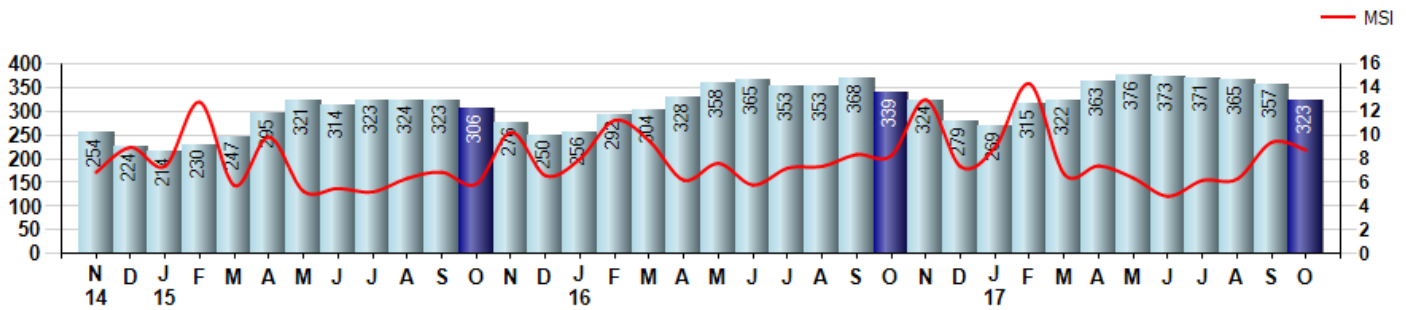
Price Range: 0 to 999999999 | Properties: Single Family Home, Townhome, Condo

Inventory & MSI

The Total Inventory of Properties available for sale as of October was 323, down -9.5% from 357 last month and down -4.7% from 339 in October of last year. October 2017 Inventory was at a mid range compared to October of 2016 and 2015.

A comparatively lower MSI is more beneficial for sellers while a higher MSI is better for buyers. The October 2017 MSI of 8.7 months was at its highest level compared with October of 2016 and 2015.

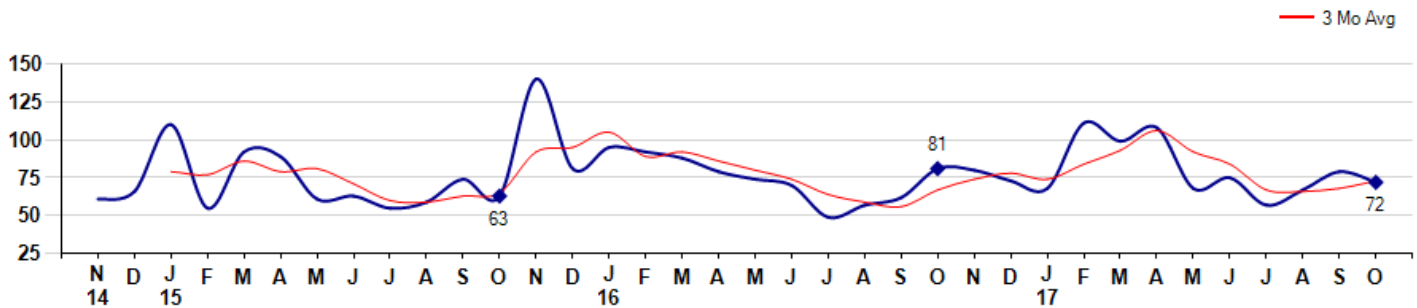
MSI is the # of months needed to sell all of the Inventory at the monthly Sales Pace



Market Time

The average Days On Market(DOM) shows how many days the average Property is on the Market before it sells. An upward trend in DOM tends to indicate a move towards more of a Buyer's market, a downward trend a move towards more of a Seller's market. The DOM for October was 72, down -8.9% from 79 days last month and down -11.1% from 81 days in October of last year. The October 2017 DOM was at a mid range compared with October of 2016 and 2015.

Average Days on Market(Listing to Contract) for properties sold during the month



MLS Area: Highland Park



ART WILSON

Broker, Realtor

847-363-1599

www.NorthShoreHomesOnline.com

Art.Wilson@cbexchange.com

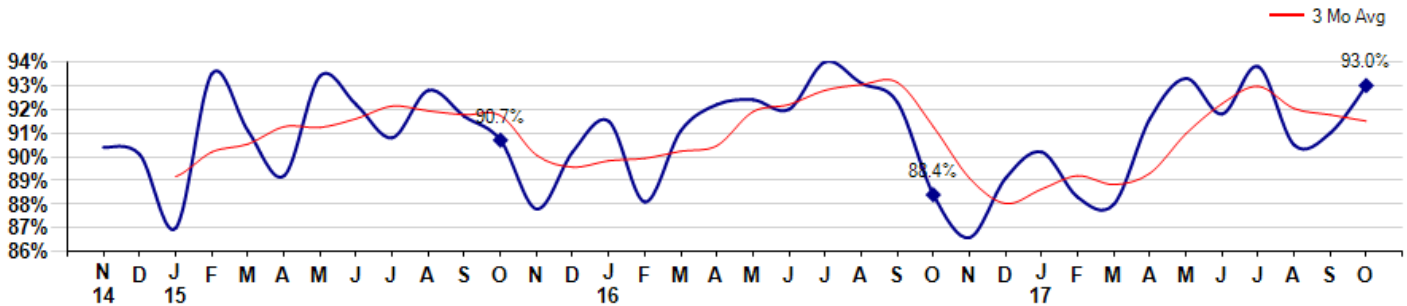


Price Range: 0 to 999999999 | Properties: Single Family Home, Townhome, Condo

Selling Price vs Listing Price

The Selling Price vs Listing Price reveals the average amount that Sellers are agreeing to come down from their list price. The lower the ratio is below 100% the more of a Buyer's market exists, a ratio at or above 100% indicates more of a Seller's market. The October 2017 Selling Price vs List Price of 93.0% was up from 91.0% last month and up from 88.4% in October of last year.

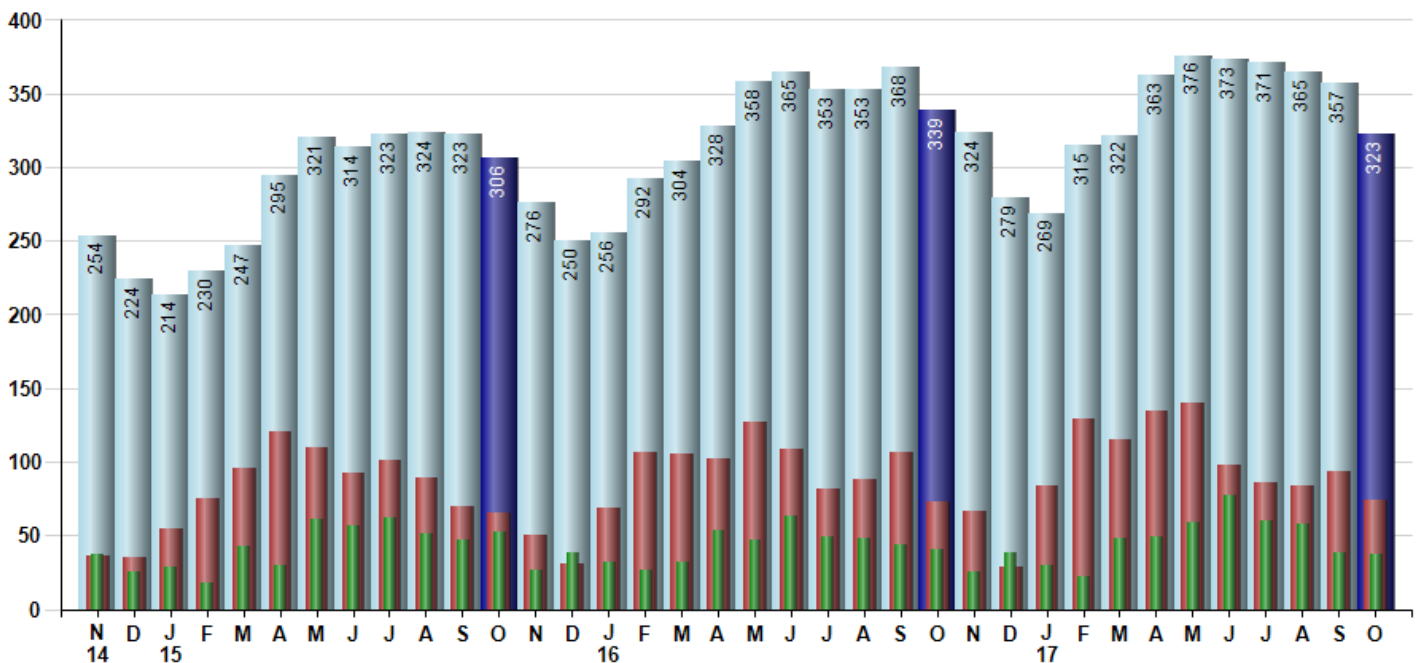
Avg Selling Price divided by Avg Listing Price for sold properties during the month



Inventory / New Listings / Sales

This last view of the market combines monthly inventory of Properties for sale along with New Listings and Sales. The graph shows the basic annual seasonality of the market as well as the relationship between these items. The number of New Listings in October 2017 was 74, down -20.4% from 93 last month and up 1.4% from 73 in October of last year.

Inventory New Listings Sold



© 2017 Coldwell Banker Residential Brokerage. All Rights Reserved. Coldwell Banker Residential Brokerage fully supports the principles of the Fair Housing Act and the Equal Opportunity Act. Coldwell Banker Residential Brokerage is operated by a subsidiary of NRT LLC. Coldwell Banker and the Coldwell Banker Logo are registered service marks owned by Coldwell Banker Real Estate LLC.

Based on information from Midwest Real Estate Data LLC for the period 11/1/2014 through 10/31/2017. Due to MLS reporting methods and allowable reporting policy, this data is only informational and may not be completely accurate. Therefore, Coldwell Banker Residential Brokerage does not guarantee the data accuracy. Data maintained by the MLS's may not reflect all real estate activity in the market.



MARKET ACTION REPORT

October 2017

MLS Area: Highland Park



ART WILSON
 Broker, Realtor
 847-363-1599
 www.NorthShoreHomesOnline.com
 Art.Wilson@cbexchange.com



Price Range: 0 to 999999999 | Properties: Single Family Home, Townhome, Condo

	N 14	D	J 15	F	M	A	M	J	J	A	S	O	N	D	J 16	F	M	A	M	J	J	A	S	O	N	D	J 17	F	M	A	M	J	J	A	S	O
Homes Sold	37	25	29	18	43	30	61	57	62	51	47	52	27	38	32	26	32	53	47	63	49	48	44	41	25	38	30	22	48	49	59	77	60	58	38	37
3 Mo. Roll Avg			30	24	30	30	45	49	60	57	53	50	42	39	32	32	30	37	44	54	53	53	47	44	37	35	31	30	33	40	52	62	65	65	52	44

	(000's) N 14	D	J 15	F	M	A	M	J	J	A	S	O	N	D	J 16	F	M	A	M	J	J	A	S	O	N	D	J 17	F	M	A	M	J	J	A	S	O
Median Sale Price	550	440	517	681	400	523	402	550	543	460	519	438	490	472	475	458	510	590	522	499	545	468	541	456	482	408	503	391	368	488	500	525	473	505	441	465
3 Mo. Roll Avg			502	546	533	535	442	492	498	518	507	472	482	466	479	468	481	519	541	537	522	504	518	488	493	448	464	434	420	416	452	504	499	501	473	470

	N 14	D	J 15	F	M	A	M	J	J	A	S	O	N	D	J 16	F	M	A	M	J	J	A	S	O	N	D	J 17	F	M	A	M	J	J	A	S	O
Inventory	254	224	214	230	247	295	321	314	323	324	323	306	276	250	256	292	304	328	358	365	353	353	368	339	324	279	269	315	322	363	376	373	371	365	357	323
MSI	7	9	7	13	6	10	5	6	5	6	7	6	10	7	8	11	10	6	8	6	7	7	8	8	13	7	9	14	7	7	6	5	6	6	9	9

	N 14	D	J 15	F	M	A	M	J	J	A	S	O	N	D	J 16	F	M	A	M	J	J	A	S	O	N	D	J 17	F	M	A	M	J	J	A	S	O
Days On Market	61	66	110	55	92	89	61	63	55	59	74	63	140	81	95	92	88	79	74	70	49	57	62	81	80	73	68	111	99	108	68	75	57	67	79	72
3 Mo. Roll Avg			79	77	86	79	81	71	60	59	63	65	92	95	105	89	92	86	80	74	64	59	56	67	74	78	74	84	93	106	92	84	67	66	68	73

	N 14	D	J 15	F	M	A	M	J	J	A	S	O	N	D	J 16	F	M	A	M	J	J	A	S	O	N	D	J 17	F	M	A	M	J	J	A	S	O
Price per Sq Ft	219	220	198	216	199	211	202	222	217	199	215	205	216	204	213	189	199	217	215	215	221	204	198	193	218	190	196	173	189	219	213	217	208	205	206	246
3 Mo. Roll Avg			212	211	204	209	204	212	214	213	210	206	212	208	211	202	200	202	210	216	217	213	208	198	203	200	201	186	186	194	207	216	213	210	206	219

	N 14	D	J 15	F	M	A	M	J	J	A	S	O	N	D	J 16	F	M	A	M	J	J	A	S	O	N	D	J 17	F	M	A	M	J	J	A	S	O
Sale to List Price	0.904	0.901	0.870	0.935	0.911	0.892	0.934	0.922	0.908	0.928	0.917	0.907	0.878	0.902	0.915	0.881	0.911	0.922	0.924	0.920	0.940	0.931	0.923	0.884	0.866	0.891	0.902	0.883	0.880	0.916	0.933	0.918	0.938	0.905	0.910	0.930
3 Mo. Roll Avg			0.892	0.902	0.905	0.913	0.912	0.916	0.921	0.919	0.918	0.917	0.901	0.896	0.898	0.899	0.902	0.905	0.919	0.922	0.928	0.930	0.931	0.913	0.891	0.880	0.886	0.892	0.888	0.893	0.910	0.922	0.930	0.920	0.918	0.915

	N 14	D	J 15	F	M	A	M	J	J	A	S	O	N	D	J 16	F	M	A	M	J	J	A	S	O	N	D	J 17	F	M	A	M	J	J	A	S	O
New Listings	36	35	55	75	96	121	110	92	101	89	70	65	50	31	69	106	105	102	127	109	82	88	107	73	67	29	84	129	115	135	140	98	86	84	93	74
Inventory	254	224	214	230	247	295	321	314	323	324	323	306	276	250	256	292	304	328	358	365	353	353	368	339	324	279	269	315	322	363	376	373	371	365	357	323
Sales	37	25	29	18	43	30	61	57	62	51	47	52	27	38	32	26	32	53	47	63	49	48	44	41	25	38	30	22	48	49	59	77	60	58	38	37

	(000's) N 14	D	J 15	F	M	A	M	J	J	A	S	O	N	D	J 16	F	M	A	M	J	J	A	S	O	N	D	J 17	F	M	A	M	J	J	A	S	O
Avg Sale Price	656	569	487	763	463	494	464	633	593	559	553	553	659	543	550	448	520	678	608	595	594	561	549	510	669	508	621	482	437	641	565	664	521	572	557	640
3 Mo. Roll Avg			571	607	571	573	474	530	563	595	568	555	588	585	584	514	506	549	602	627	599	583	568	540	576	562	599	537	513	520	548	623	583	585	550	589

© 2017 Coldwell Banker Residential Brokerage. All Rights Reserved. Coldwell Banker Residential Brokerage fully supports the principles of the Fair Housing Act and the Equal Opportunity Act. Coldwell Banker Residential Brokerage is operated by a subsidiary of NRT LLC. Coldwell Banker and the Coldwell Banker Logo are registered service marks owned by Coldwell Banker Real Estate LLC.

Based on information from Midwest Real Estate Data LLC for the period 11/1/2014 through 10/31/2017. Due to MLS reporting methods and allowable reporting policy, this data is only informational and may not be completely accurate. Therefore, Coldwell Banker Residential Brokerage does not guarantee the data accuracy. Data maintained by the MLS's may not reflect all real estate activity in the market.

