

MLS Area: Glencoe



ART WILSON

Broker, Realtor

847-363-1599

www.NorthShoreHomesOnline.com

Art.Wilson@cbexchange.com



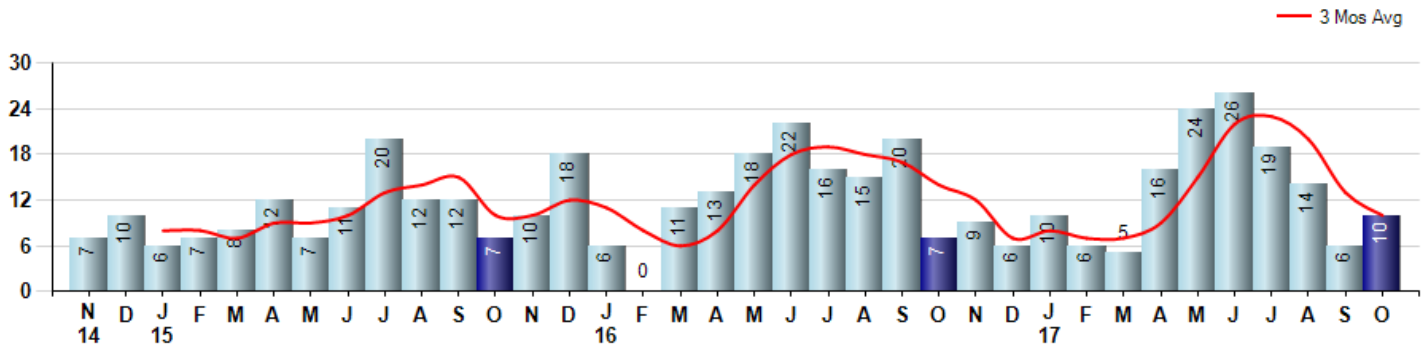
Price Range: 0 to 999999999 | Properties: Single Family Home, Townhome, Condo

Market Profile & Trends Overview	Month	Trending Versus*:				YTD	Trending Versus*:	
		LM	L3M	PYM	LY		PriorYTD	PriorYear
Median List Price of all Current Listings	\$1,092,450	↑		↓				
Average List Price of all Current Listings	\$1,512,067	↑		↓				
October Median Sales Price	\$880,000	↓	↓	↑	↑	\$843,750	↓	↓
October Average Sales Price	\$1,192,700	↑	↑	↑	↑	\$1,078,889	↓	↑
Total Properties Currently for Sale (Inventory)	106	↓		↑				
October Number of Properties Sold	10	↑		↑		136	↑	
October Average Days on Market (Solds)	51	↓	↓	↓	↓	69	↑	↑
October Month's Supply of Inventory	10.6	↓	↓	↓	↑	10.5	↑	↑
October Sale Price vs List Price Ratio	90.0%	↑	↓	↓	↓	90.9%	↓	↓

* LM=Last Month / L3M=Last 3 Months / PYM=Same Month Prior Year / LY=Last Year / YTD = Year-to-date

Property Sales

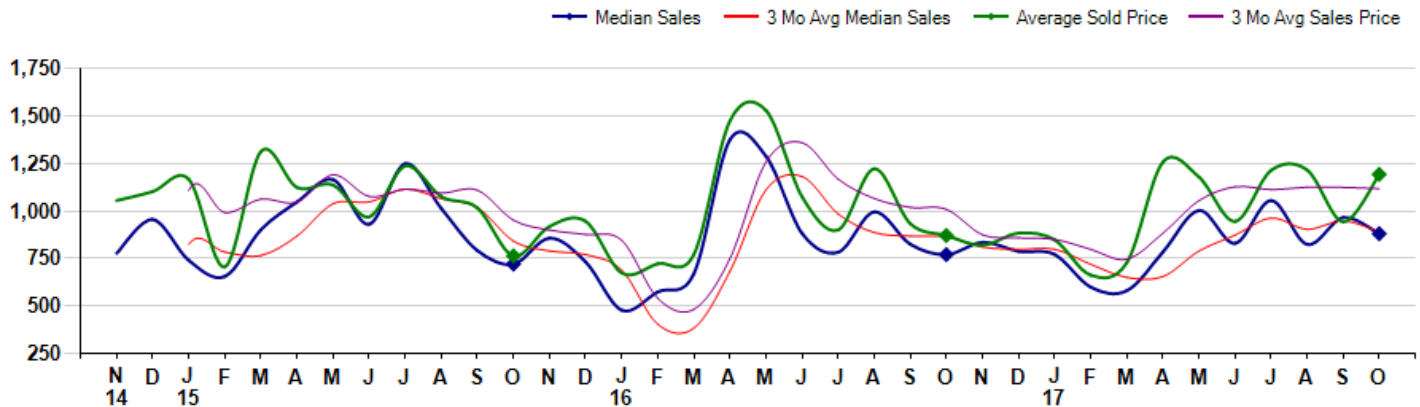
October Property sales were 10, up 42.9% from 7 in October of 2016 and 66.7% higher than the 6 sales last month. October 2017 sales were at their highest level compared to October of 2016 and 2015. October YTD sales of 136 are running 6.3% ahead of last year's year-to-date sales of 128.



Prices

The Median Sales Price in October was \$880,000, up 14.3% from \$770,000 in October of 2016 and down -8.8% from \$965,000 last month. The Average Sales Price in October was \$1,192,700, up 36.9% from \$870,929 in October of 2016 and up 26.4% from \$943,333 last month. October 2017 ASP was at highest level compared to October of 2016 and 2015.

Median means Middle (the same # of properties sold above and below Median) (000's)



MLS Area: Glencoe



ART WILSON
 Broker, Realtor
 847-363-1599
 www.NorthShoreHomesOnline.com
 Art.Wilson@cbexchange.com



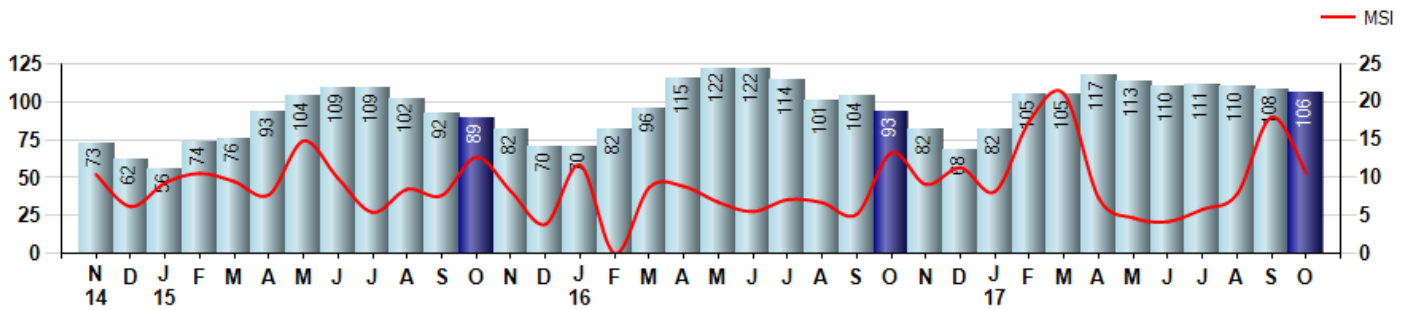
Price Range: 0 to 999999999 | Properties: Single Family Home, Townhome, Condo

Inventory & MSI

The Total Inventory of Properties available for sale as of October was 106, down -1.9% from 108 last month and up 14.0% from 93 in October of last year. October 2017 Inventory was at highest level compared to October of 2016 and 2015.

A comparatively lower MSI is more beneficial for sellers while a higher MSI is better for buyers. The October 2017 MSI of 10.6 months was at its lowest level compared with October of 2016 and 2015.

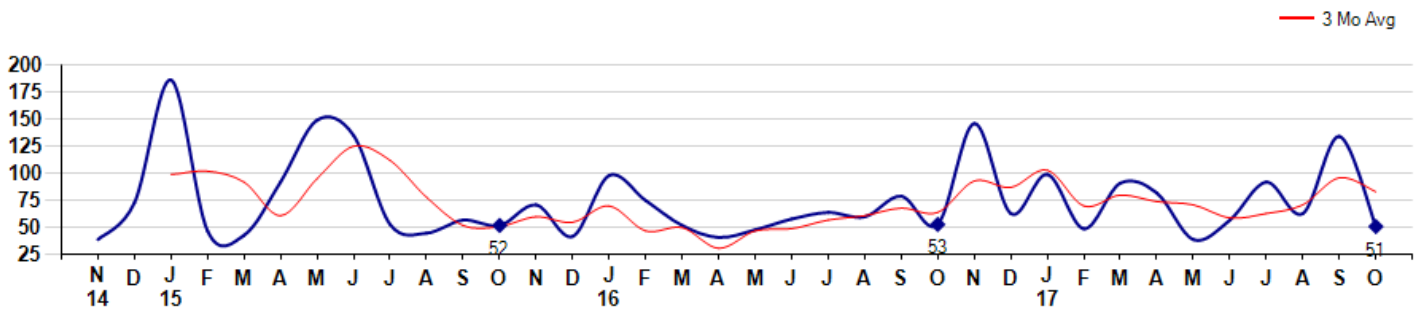
MSI is the # of months needed to sell all of the Inventory at the monthly Sales Pace



Market Time

The average Days On Market(DOM) shows how many days the average Property is on the Market before it sells. An upward trend in DOM tends to indicate a move towards more of a Buyer's market, a downward trend a move towards more of a Seller's market. The DOM for October was 51, down -61.9% from 134 days last month and down -3.8% from 53 days in October of last year. The October 2017 DOM was at its lowest level compared with October of 2016 and 2015.

Average Days on Market(Listing to Contract) for properties sold during the month



MLS Area: Glencoe



ART WILSON
 Broker, Realtor
 847-363-1599
www.NorthShoreHomesOnline.com
Art.Wilson@cbexchange.com

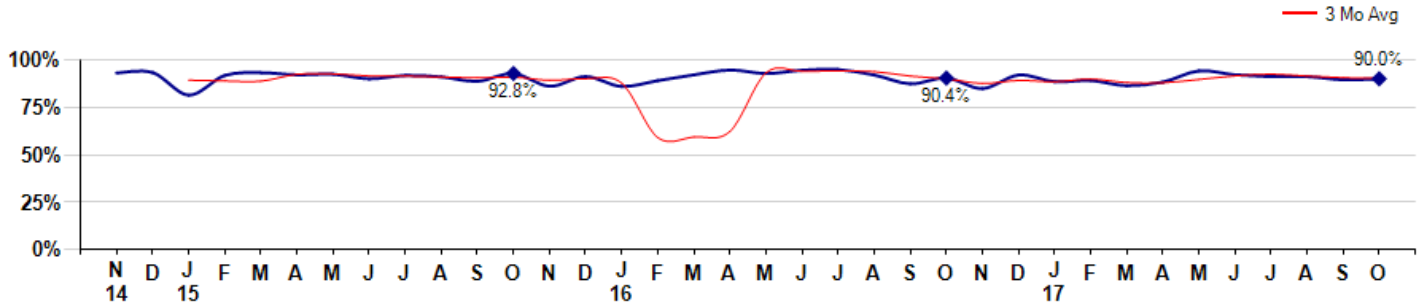


Price Range: 0 to 999999999 | Properties: Single Family Home, Townhome, Condo

Selling Price vs Listing Price

The Selling Price vs Listing Price reveals the average amount that Sellers are agreeing to come down from their list price. The lower the ratio is below 100% the more of a Buyer's market exists, a ratio at or above 100% indicates more of a Seller's market. The October 2017 Selling Price vs List Price of 90.0% was up from 89.5% last month and down from 90.4% in October of last year.

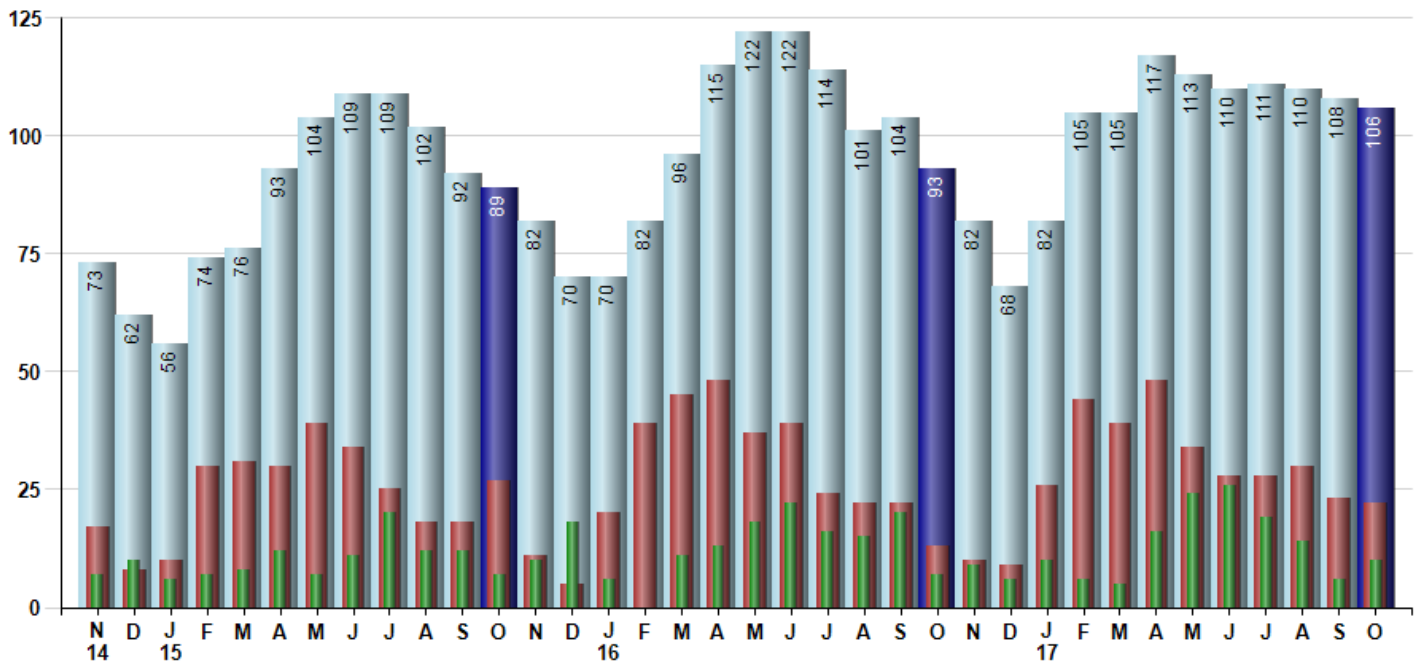
Avg Selling Price divided by Avg Listing Price for sold properties during the month



Inventory / New Listings / Sales

This last view of the market combines monthly inventory of Properties for sale along with New Listings and Sales. The graph shows the basic annual seasonality of the market as well as the relationship between these items. The number of New Listings in October 2017 was 22, down -4.3% from 23 last month and up 69.2% from 13 in October of last year.

Inventory (light blue), New Listings (red), Sold (green)



© 2017 Coldwell Banker Residential Brokerage. All Rights Reserved. Coldwell Banker Residential Brokerage fully supports the principles of the Fair Housing Act and the Equal Opportunity Act. Coldwell Banker Residential Brokerage is operated by a subsidiary of NRT LLC. Coldwell Banker and the Coldwell Banker Logo are registered service marks owned by Coldwell Banker Real Estate LLC.

Based on information from Midwest Real Estate Data LLC for the period 11/1/2014 through 10/31/2017. Due to MLS reporting methods and allowable reporting policy, this data is only informational and may not be completely accurate. Therefore, Coldwell Banker Residential Brokerage does not guarantee the data accuracy. Data maintained by the MLS's may not reflect all real estate activity in the market.



MARKET ACTION REPORT

October 2017

MLS Area: Glencoe



ART WILSON
 Broker, Realtor
 847-363-1599
 www.NorthShoreHomesOnline.com
 Art.Wilson@cbexchange.com



Price Range: 0 to 999999999 | Properties: Single Family Home, Townhome, Condo

	N 14	D	J 15	F	M	A	M	J	J	A	S	O	N	D	J 16	F	M	A	M	J	J	A	S	O	N	D	J 17	F	M	A	M	J	J	A	S	O
Homes Sold	7	10	6	7	8	12	7	11	20	12	12	7	10	18	6	0	11	13	18	22	16	15	20	7	9	6	10	6	5	16	24	26	19	14	6	10
3 Mo. Roll Avg			8	8	7	9	9	10	13	14	15	10	10	12	11	8	6	8	14	18	19	18	17	14	12	7	8	7	7	9	15	22	23	20	13	10

	(000's) N 14	D	J 15	F	M	A	M	J	J	A	S	O	N	D	J 16	F	M	A	M	J	J	A	S	O	N	D	J 17	F	M	A	M	J	J	A	S	O
Median Sale Price	777	955	740	655	902	1,048	1,165	930	1,250	1,013	791	720	857	733	478	0	670	1,375	1,288	883	783	995	825	770	835	788	771	599	580	784	1,003	830	1,055	824	965	880
3 Mo. Roll Avg			824	783	766	868	1,038	1,048	1,115	1,064	1,018	841	789	770	689	403	383	682	1,111	1,182	984	887	867	863	810	798	798	719	650	654	789	872	963	903	948	890

	N 14	D	J 15	F	M	A	M	J	J	A	S	O	N	D	J 16	F	M	A	M	J	J	A	S	O	N	D	J 17	F	M	A	M	J	J	A	S	O
Inventory	73	62	56	74	76	93	104	109	109	102	92	89	82	70	70	82	96	115	122	122	114	101	104	93	82	68	82	105	105	117	113	110	111	110	108	106
MSI	10	6	9	11	10	8	15	10	5	9	8	13	8	4	12	0	9	9	7	6	7	7	5	13	9	11	8	18	21	7	5	4	6	8	18	11

	N 14	D	J 15	F	M	A	M	J	J	A	S	O	N	D	J 16	F	M	A	M	J	J	A	S	O	N	D	J 17	F	M	A	M	J	J	A	S	O
Days On Market	39	73	186	47	43	92	149	135	53	45	57	52	71	42	98	0	52	41	48	58	64	60	79	53	146	63	99	49	91	82	39	57	92	63	134	51
3 Mo. Roll Avg			99	102	92	61	95	125	112	78	52	51	60	55	70	47	50	31	47	49	57	61	68	64	93	87	103	70	80	74	71	59	63	71	96	83

	N 14	D	J 15	F	M	A	M	J	J	A	S	O	N	D	J 16	F	M	A	M	J	J	A	S	O	N	D	J 17	F	M	A	M	J	J	A	S	O
Price per Sq Ft	327	297	374	251	377	292	351	286	310	315	255	253	306	272	265	0	242	343	339	310	279	324	294	307	273	261	253	227	288	226	309	324	345	310	271	252
3 Mo. Roll Avg			333	307	334	307	340	310	316	304	293	274	271	277	281	179	169	195	308	331	309	304	299	308	291	280	262	247	256	247	274	286	326	326	309	278

	N 14	D	J 15	F	M	A	M	J	J	A	S	O	N	D	J 16	F	M	A	M	J	J	A	S	O	N	D	J 17	F	M	A	M	J	J	A	S	O
Sale to List Price	0.931	0.933	0.814	0.918	0.932	0.921	0.924	0.900	0.918	0.910	0.887	0.928	0.861	0.912	0.860	0.000	0.921	0.946	0.928	0.945	0.949	0.920	0.874	0.904	0.849	0.920	0.885	0.891	0.864	0.883	0.942	0.921	0.911	0.911	0.895	0.900
3 Mo. Roll Avg			0.893	0.888	0.888	0.924	0.926	0.915	0.914	0.909	0.905	0.908	0.892	0.900	0.878	0.591	0.594	0.622	0.932	0.940	0.941	0.938	0.914	0.899	0.876	0.891	0.885	0.899	0.880	0.879	0.896	0.915	0.925	0.914	0.906	0.902

	N 14	D	J 15	F	M	A	M	J	J	A	S	O	N	D	J 16	F	M	A	M	J	J	A	S	O	N	D	J 17	F	M	A	M	J	J	A	S	O
New Listings	17	8	10	30	31	30	39	34	25	18	18	27	11	5	20	39	45	48	37	39	24	22	22	13	10	9	26	44	39	48	34	28	28	30	23	22
Inventory	73	62	56	74	76	93	104	109	109	102	92	89	82	70	70	82	96	115	122	122	114	101	104	93	82	68	82	105	105	117	113	110	111	110	108	106
Sales	7	10	6	7	8	12	7	11	20	12	12	7	10	18	6	0	11	13	18	22	16	15	20	7	9	6	10	6	5	16	24	26	19	14	6	10

	(000's) N 14	D	J 15	F	M	A	M	J	J	A	S	O	N	D	J 16	F	M	A	M	J	J	A	S	O	N	D	J 17	F	M	A	M	J	J	A	S	O
Avg Sale Price	1,055	1,102	1,167	706	1,313	1,123	1,136	969	1,237	1,075	1,016	763	919	946	674	0	771	1,475	1,529	1,075	900	1,222	933	871	820	883	848	662	727	1,257	1,178	945	1,214	1,216	943	1,193
3 Mo. Roll Avg			1,108	992	1,062	1,047	1,191	1,076	1,114	1,094	1,109	951	899	876	846	540	482	749	1,258	1,359	1,168	1,066	1,018	1,009	875	858	850	798	746	882	1,054	1,127	1,113	1,125	1,124	1,117

© 2017 Coldwell Banker Residential Brokerage. All Rights Reserved. Coldwell Banker Residential Brokerage fully supports the principles of the Fair Housing Act and the Equal Opportunity Act. Coldwell Banker Residential Brokerage is operated by a subsidiary of NRT LLC. Coldwell Banker and the Coldwell Banker Logo are registered service marks owned by Coldwell Banker Real Estate LLC.

Based on information from Midwest Real Estate Data LLC for the period 11/1/2014 through 10/31/2017. Due to MLS reporting methods and allowable reporting policy, this data is only informational and may not be completely accurate. Therefore, Coldwell Banker Residential Brokerage does not guarantee the data accuracy. Data maintained by the MLS's may not reflect all real estate activity in the market.

