

MLS Area: Highland Park



ART WILSON

Broker, Realtor

847-363-1599

www.NorthShoreHomesOnline.com

Art.Wilson@cbexchange.com



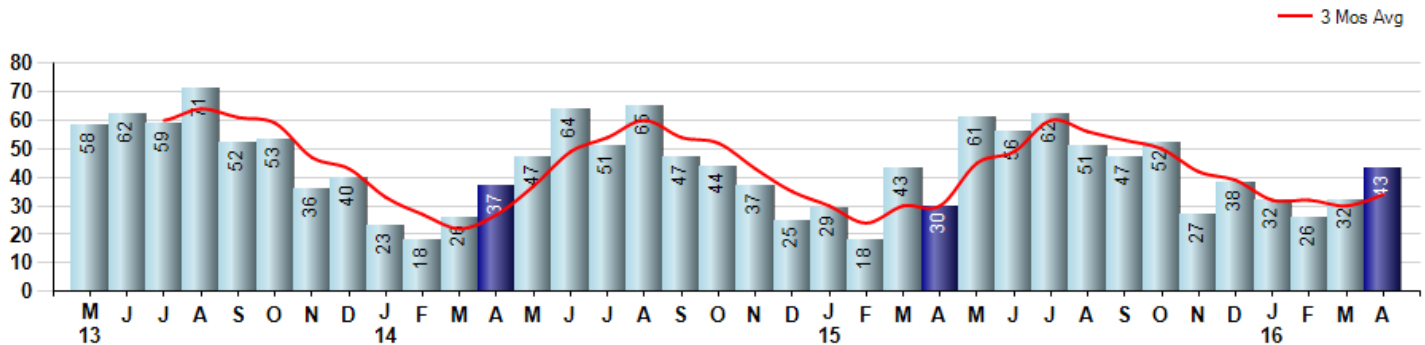
Price Range: \$0 to \$999,999,000 | Properties: Single Family Home, Townhome, Condo

Market Profile & Trends Overview	Month	Trending Versus*:				YTD	Trending Versus*:	
		LM	L3M	PYM	LY		PriorYTD	PriorYear
Median List Price of all Current Listings	\$782,000	↑		↑				
Average List Price of all Current Listings	\$983,070	↑		↑				
April Median Sales Price	\$625,000	↑	↑	↑	↑	\$500,000	↓	↑
April Average Sales Price	\$722,340	↑	↑	↑	↑	\$578,633	↑	↑
Total Properties Currently for Sale (Inventory)	304	↑		↑				
April Number of Properties Sold	43	↑		↑		133	↑	
April Average Days on Market (Solds)	79	↓	↓	↓	↑	88	↓	↑
April Month's Supply of Inventory	7.1	↓	↓	↓	↓	8.7	↓	↑
April Sale Price vs List Price Ratio	94.0%	↓	↑	↓	↓	93.5%	↓	↓

* LM=Last Month / L3M=Last 3 Months / PYM=Same Month Prior Year / LY=Last Year / YTD = Year-to-date

Property Sales

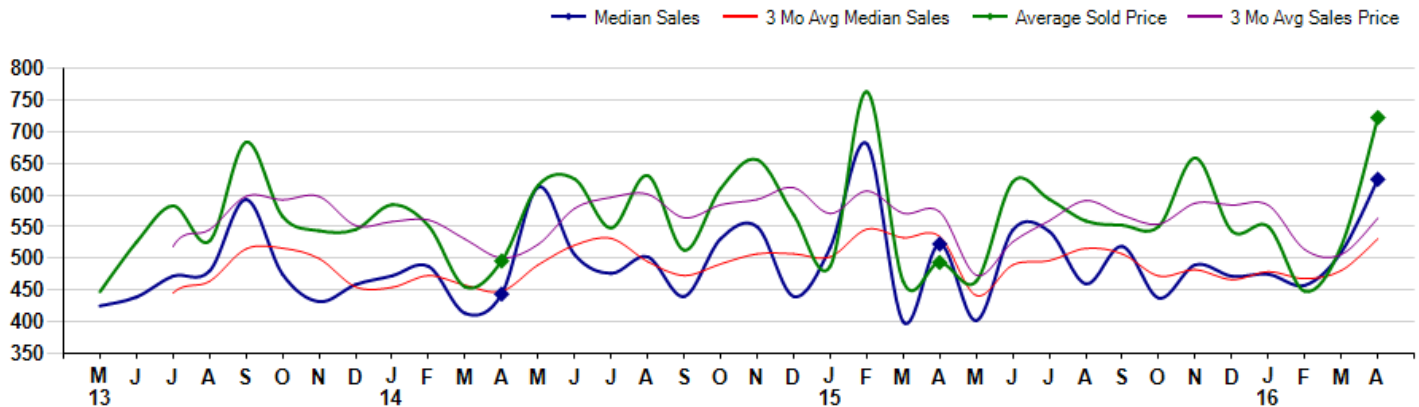
April Property sales were 43, up 43.3% from 30 in April of 2015 and 34.4% higher than the 32 sales last month. April 2016 sales were at their highest level compared to April of 2015 and 2014. April YTD sales of 133 are running 10.8% ahead of last year's year-to-date sales of 120.



Prices

The Median Sales Price in April was \$625,000, up 19.6% from \$522,750 in April of 2015 and up 22.5% from \$510,000 last month. The Average Sales Price in April was \$722,340, up 46.3% from \$493,624 in April of 2015 and up 38.9% from \$519,942 last month. April 2016 ASP was at highest level compared to April of 2015 and 2014.

Median means Middle (the same # of properties sold above and below Median) (000's)



MLS Area: Highland Park



ART WILSON
 Broker, Realtor
 847-363-1599
 www.NorthShoreHomesOnline.com
 Art.Wilson@cbexchange.com



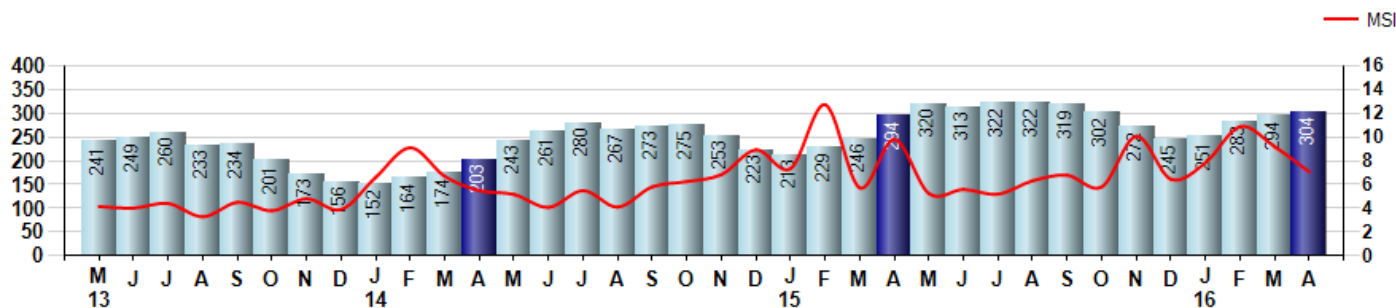
Price Range: \$0 to \$999,999,000 | Properties: Single Family Home, Townhome, Condo

Inventory & MSI

The Total Inventory of Properties available for sale as of April was 304, up 3.4% from 294 last month and up 3.4% from 294 in April of last year. April 2016 Inventory was at highest level compared to April of 2015 and 2014.

A comparatively lower MSI is more beneficial for sellers while a higher MSI is better for buyers. The April 2016 MSI of 7.1 months was at a mid range compared with April of 2015 and 2014.

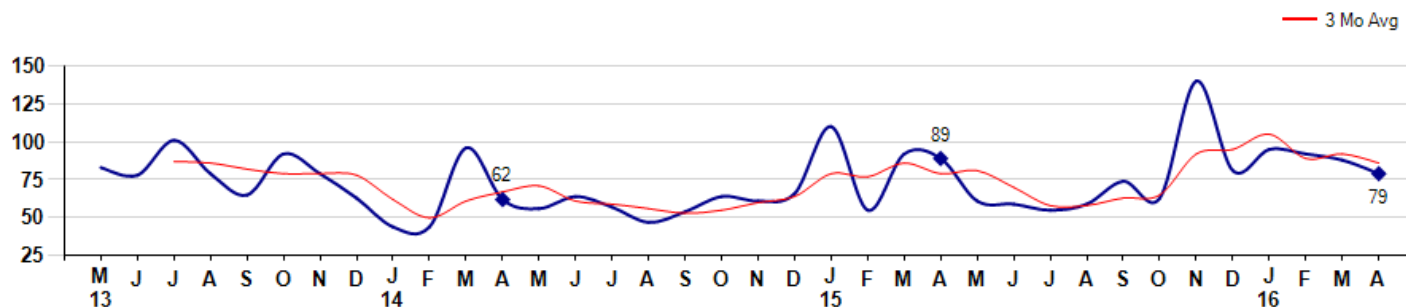
MSI is the # of months needed to sell all of the Inventory at the monthly Sales Pace



Market Time

The average Days On Market(DOM) shows how many days the average Property is on the Market before it sells. An upward trend in DOM tends to indicate a move towards more of a Buyer's market, a downward trend a move towards more of a Seller's market. The DOM for April was 79, down -10.2% from 88 days last month and down -11.2% from 89 days in April of last year. The April 2016 DOM was at a mid range compared with April of 2015 and 2014.

Average Days on Market(Listing to Contract) for properties sold during the month



© 2016 Coldwell Banker Real Estate LLC. All Rights Reserved. Coldwell Banker Residential Brokerage fully supports the principles of the Fair Housing Act and the Equal Opportunity Act. Coldwell Banker Residential Brokerage is operated by a subsidiary of NRT LLC. Coldwell Banker and the Coldwell Banker Logo are registered service marks owned by Coldwell Banker Real Estate LLC.

Based on information from Midwest Real Estate Data LLC for the period 5/1/2013 through 4/30/2016. Due to MLS reporting methods and allowable reporting policy, this data is only informational and may not be completely accurate. Therefore, Coldwell Banker Residential Brokerage does not guarantee the data accuracy. Data maintained by the MLS's may not reflect all real estate activity in the market.



MLS Area: Highland Park



ART WILSON
 Broker, Realtor
 847-363-1599
www.NorthShoreHomesOnline.com
Art.Wilson@cbexchange.com

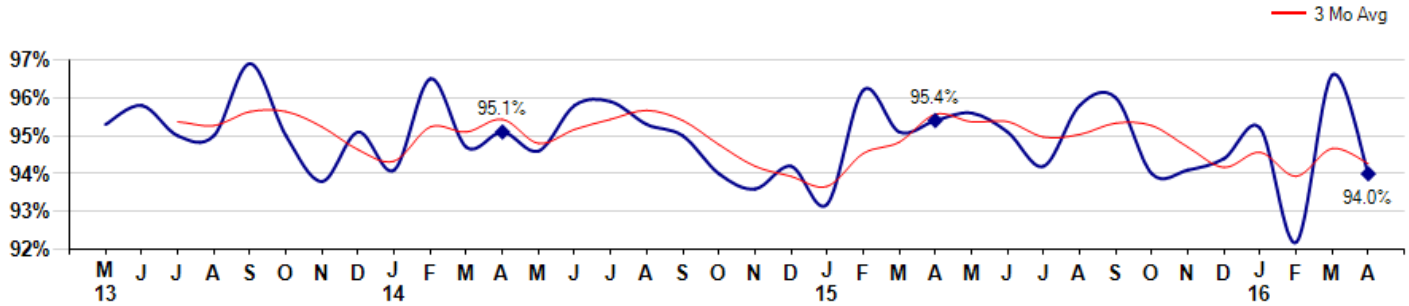


Price Range: \$0 to \$999,999,000 | Properties: Single Family Home, Townhome, Condo

Selling Price vs Listing Price

The Selling Price vs Listing Price reveals the average amount that Sellers are agreeing to come down from their list price. The lower the ratio is below 100% the more of a Buyer's market exists, a ratio at or above 100% indicates more of a Seller's market. The April 2016 Selling Price vs List Price of 94.0% was down from 96.6% last month and down from 95.4% in April of last year.

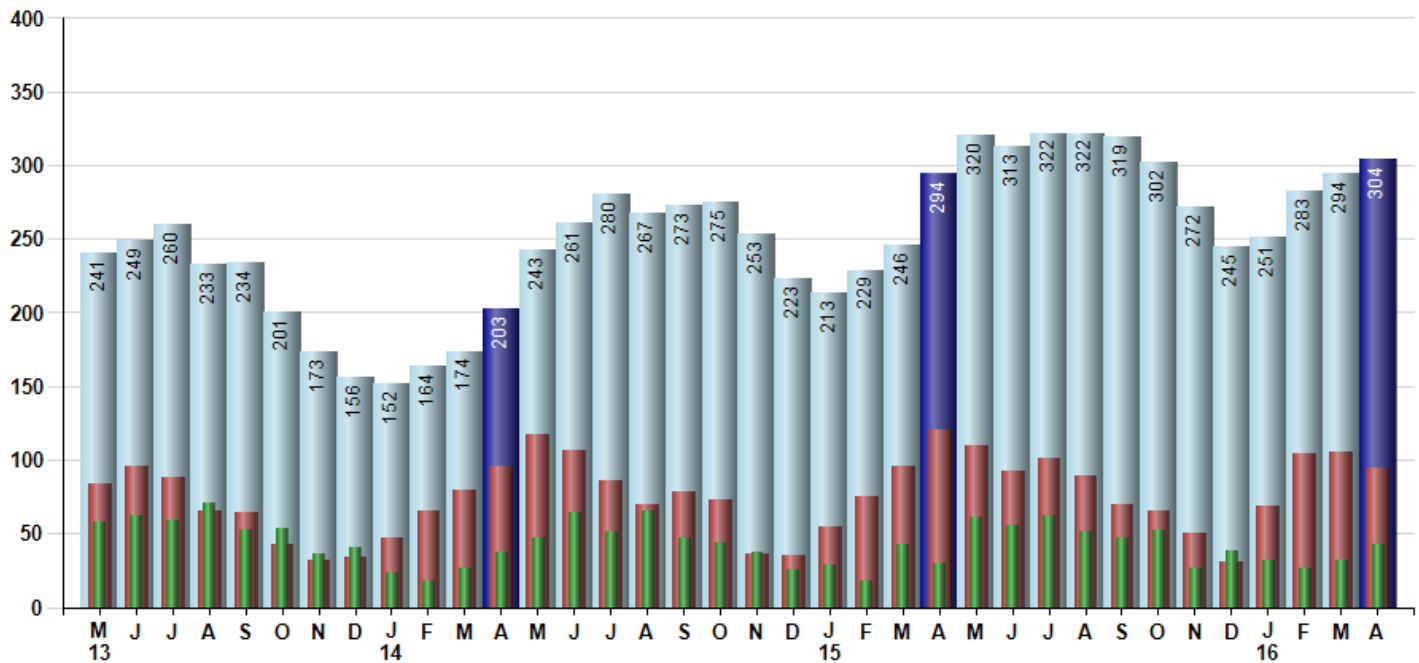
Avg Selling Price divided by Avg Listing Price for sold properties during the month



Inventory / New Listings / Sales

This last view of the market combines monthly inventory of Properties for sale along with New Listings and Sales. The graph shows the basic annual seasonality of the market as well as the relationship between these items. The number of New Listings in April 2016 was 95, down -9.5% from 105 last month and down -21.5% from 121 in April of last year.

Inventory (light blue), New Listings (red), Sold (green)



© 2016 Coldwell Banker Real Estate LLC. All Rights Reserved. Coldwell Banker Residential Brokerage fully supports the principles of the Fair Housing Act and the Equal Opportunity Act. Coldwell Banker Residential Brokerage is operated by a subsidiary of NRT LLC. Coldwell Banker and the Coldwell Banker Logo are registered service marks owned by Coldwell Banker Real Estate LLC.

Based on information from Midwest Real Estate Data LLC for the period 5/1/2013 through 4/30/2016. Due to MLS reporting methods and allowable reporting policy, this data is only informational and may not be completely accurate. Therefore, Coldwell Banker Residential Brokerage does not guarantee the data accuracy. Data maintained by the MLS's may not reflect all real estate activity in the market.



MARKET ACTION REPORT

April 2016

MLS Area: Highland Park



ART WILSON

Broker, Realtor

847-363-1599

www.NorthShoreHomesOnline.com

Art.Wilson@cbexchange.com



Price Range: \$0 to \$999,999,000 | Properties: Single Family Home, Townhome, Condo

	M 13	J	J	A	S	O	N	D	J 14	F	M	A	M	J	J	A	S	O	N	D	J 15	F	M	A	M	J	J	A	S	O	N	D	J 16	F	M	A	
Homes Sold	58	62	59	71	52	53	36	40	23	18	26	37	47	64	51	65	47	44	37	25	29	18	43	30	61	56	62	51	47	52	27	38	32	26	32	43	
3 Mo. Roll Avg			60	64	61	59	47	43	33	27	22	27	37	49	54	60	54	52	43	35	30	24	30	30	45	49	60	56	53	50	42	39	32	32	32	30	34

	(000's) M 13	J	J	A	S	O	N	D	J 14	F	M	A	M	J	J	A	S	O	N	D	J 15	F	M	A	M	J	J	A	S	O	N	D	J 16	F	M	A
Median Sale Price	425	439	472	480	593	475	432	459	473	488	413	444	613	506	476	503	440	531	550	440	517	681	400	523	402	545	543	460	519	438	490	472	475	458	510	625
3 Mo. Roll Avg			445	464	515	516	500	455	454	473	458	448	490	521	532	495	473	491	507	507	502	546	533	535	442	490	496	516	507	472	482	466	479	468	481	531

	M 13	J	J	A	S	O	N	D	J 14	F	M	A	M	J	J	A	S	O	N	D	J 15	F	M	A	M	J	J	A	S	O	N	D	J 16	F	M	A
Inventory	241	249	260	233	234	201	173	156	152	164	174	203	243	261	280	267	273	275	253	223	213	229	246	294	320	313	322	322	319	302	272	245	251	283	294	304
MSI	4	4	4	3	5	4	5	4	7	9	7	5	5	4	5	4	6	6	7	9	7	13	6	10	5	6	5	6	7	6	10	6	8	11	9	7

	M 13	J	J	A	S	O	N	D	J 14	F	M	A	M	J	J	A	S	O	N	D	J 15	F	M	A	M	J	J	A	S	O	N	D	J 16	F	M	A
Days On Market	83	78	101	79	65	92	79	63	44	44	96	62	56	64	57	47	54	64	61	66	110	55	92	89	61	59	55	59	74	63	140	81	95	92	88	79
3 Mo. Roll Avg			87	86	82	79	79	78	62	50	61	67	71	61	59	56	53	55	60	64	79	77	86	79	81	70	58	58	63	65	92	95	105	89	92	86

	M 13	J	J	A	S	O	N	D	J 14	F	M	A	M	J	J	A	S	O	N	D	J 15	F	M	A	M	J	J	A	S	O	N	D	J 16	F	M	A
Price per Sq Ft	180	196	202	188	224	195	207	209	211	239	189	201	215	218	205	215	208	215	219	220	198	216	199	211	202	221	217	199	215	204	216	204	213	189	199	217
3 Mo. Roll Avg			193	195	205	202	209	204	209	220	213	210	202	211	213	213	209	213	214	218	212	211	204	209	204	211	213	212	210	206	212	208	211	202	200	202

	M 13	J	J	A	S	O	N	D	J 14	F	M	A	M	J	J	A	S	O	N	D	J 15	F	M	A	M	J	J	A	S	O	N	D	J 16	F	M	A
Sale to List Price	0.953	0.958	0.950	0.950	0.969	0.950	0.938	0.951	0.941	0.965	0.947	0.951	0.946	0.958	0.959	0.953	0.950	0.940	0.936	0.942	0.932	0.962	0.951	0.954	0.956	0.951	0.942	0.958	0.960	0.940	0.941	0.944	0.952	0.922	0.966	0.940
3 Mo. Roll Avg			0.954	0.953	0.956	0.956	0.952	0.946	0.943	0.952	0.951	0.954	0.948	0.952	0.954	0.957	0.954	0.948	0.942	0.939	0.937	0.945	0.948	0.956	0.954	0.954	0.950	0.950	0.953	0.953	0.947	0.942	0.946	0.939	0.947	0.943

	M 13	J	J	A	S	O	N	D	J 14	F	M	A	M	J	J	A	S	O	N	D	J 15	F	M	A	M	J	J	A	S	O	N	D	J 16	F	M	A
New Listings	84	96	88	65	64	43	32	34	47	65	79	96	117	107	86	70	78	73	36	35	55	75	96	121	110	92	101	89	70	65	50	31	69	104	105	95
Inventory	241	249	260	233	234	201	173	156	152	164	174	203	243	261	280	267	273	275	253	223	213	229	246	294	320	313	322	322	319	302	272	245	251	283	294	304
Sales	58	62	59	71	52	53	36	40	23	18	26	37	47	64	51	65	47	44	37	25	29	18	43	30	61	56	62	51	47	52	27	38	32	26	32	43

	(000's) M 13	J	J	A	S	O	N	D	J 14	F	M	A	M	J	J	A	S	O	N	D	J 15	F	M	A	M	J	J	A	S	O	N	D	J 16	F	M	A
Avg Sale Price	447	526	583	527	684	566	544	546	585	551	455	496	615	625	548	631	513	610	656	569	487	763	463	494	464	621	593	559	552	551	659	543	550	448	520	722
3 Mo. Roll Avg			519	545	598	592	598	552	558	561	530	501	522	579	596	601	564	585	593	612	571	607	571	573	474	526	559	591	568	554	587	584	584	514	506	563

© 2016 Coldwell Banker Real Estate LLC. All Rights Reserved. Coldwell Banker Residential Brokerage fully supports the principles of the Fair Housing Act and the Equal Opportunity Act. Coldwell Banker Residential Brokerage is operated by a subsidiary of NRT LLC. Coldwell Banker and the Coldwell Banker Logo are registered service marks owned by Coldwell Banker Real Estate LLC.

Based on information from Midwest Real Estate Data LLC for the period 5/1/2013 through 4/30/2016. Due to MLS reporting methods and allowable reporting policy, this data is only informational and may not be completely accurate. Therefore, Coldwell Banker Residential Brokerage does not guarantee the data accuracy. Data maintained by the MLS's may not reflect all real estate activity in the market.

