

## MLS Area: Glencoe



**ART WILSON**  
 Broker, Realtor  
 847-363-1599  
 www.NorthShoreHomesOnline.com  
 Art.Wilson@cbexchange.com



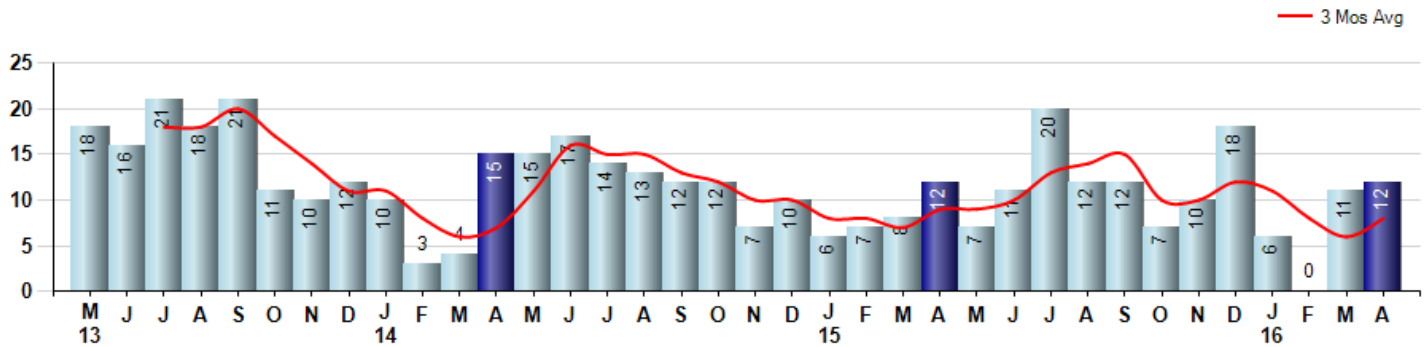
Price Range: \$0 to \$999,999,000 | Properties: Single Family Home, Townhome, Condo

Market Profile & Trends Overview	Month	Trending Versus*:				YTD	Trending Versus*:	
		LM	L3M	PYM	LY		PriorYTD	PriorYear
Median List Price of all Current Listings	\$1,236,940	↑		↓				
Average List Price of all Current Listings	\$1,496,351	↑		↑				
April Median Sales Price	\$1,310,000	↑	↑	↑	↑	\$670,000	↓	↓
April Average Sales Price	\$1,480,833	↑	↑	↑	↑	\$1,044,577	↓	↑
Total Properties Currently for Sale (Inventory)	108	↑		↑				
April Number of Properties Sold	12	↑		→		29	↓	
April Average Days on Market (Solds)	32	↓	↓	↓	↓	53	↓	↓
April Month's Supply of Inventory	9.0	↑	↑	↑	→	7.2	↓	↓
April Sale Price vs List Price Ratio	95.5%	↑	↑	↑	↑	93.8%	↑	↑

\* LM=Last Month / L3M=Last 3 Months / PYM=Same Month Prior Year / LY=Last Year / YTD = Year-to-date

### Property Sales

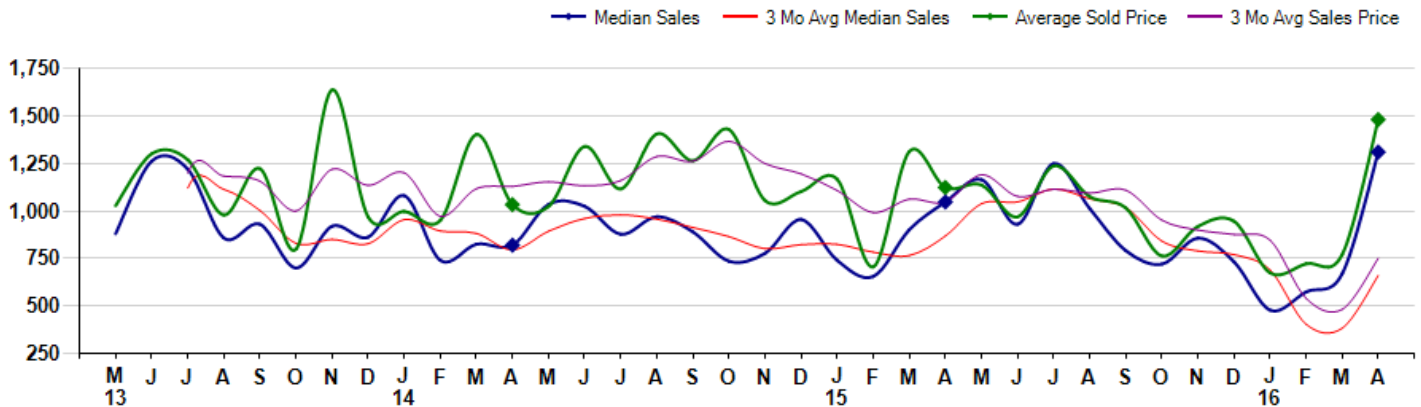
April Property sales were 12, equal to 12 in April of 2015 and 9.1% higher than the 11 sales last month. April 2016 sales were at their lowest level compared to April of 2015 and 2014. April YTD sales of 29 are running -12.1% behind last year's year-to-date sales of 33.



### Prices

The Median Sales Price in April was \$1,310,000, up 25.1% from \$1,047,500 in April of 2015 and up 95.5% from \$670,000 last month. The Average Sales Price in April was \$1,480,833, up 31.8% from \$1,123,333 in April of 2015 and up 92.1% from \$771,046 last month. April 2016 ASP was at highest level compared to April of 2015 and 2014.

Median means Middle (the same # of properties sold above and below Median) (000's)



## MLS Area: Glencoe



**ART WILSON**  
 Broker, Realtor  
 847-363-1599  
 www.NorthShoreHomesOnline.com  
 Art.Wilson@cbexchange.com



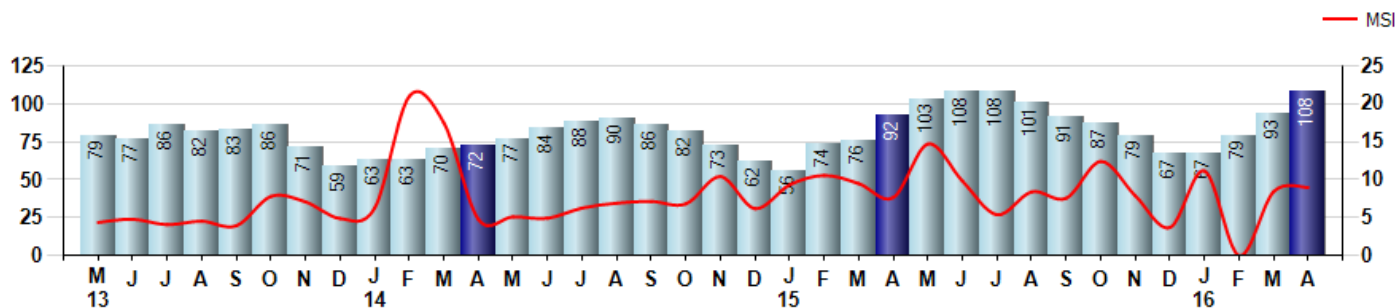
Price Range: \$0 to \$999,999,000 | Properties: Single Family Home, Townhome, Condo

### Inventory & MSI

The Total Inventory of Properties available for sale as of April was 108, up 16.1% from 93 last month and up 17.4% from 92 in April of last year. April 2016 Inventory was at highest level compared to April of 2015 and 2014.

A comparatively lower MSI is more beneficial for sellers while a higher MSI is better for buyers. The April 2016 MSI of 9.0 months was at its highest level compared with April of 2015 and 2014.

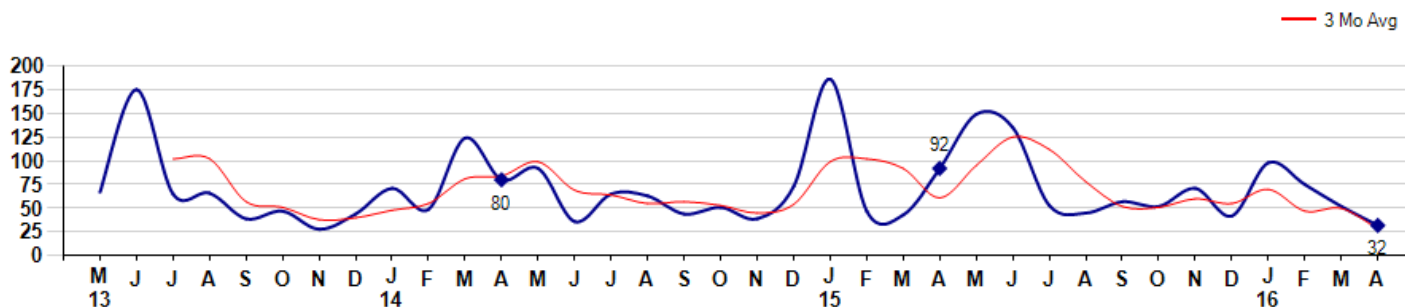
MSI is the # of months needed to sell all of the Inventory at the monthly Sales Pace



### Market Time

The average Days On Market(DOM) shows how many days the average Property is on the Market before it sells. An upward trend in DOM tends to indicate a move towards more of a Buyer's market, a downward trend a move towards more of a Seller's market. The DOM for April was 32, down -38.5% from 52 days last month and down -65.2% from 92 days in April of last year. The April 2016 DOM was at its lowest level compared with April of 2015 and 2014.

Average Days on Market(Listing to Contract) for properties sold during the month



© 2016 Coldwell Banker Real Estate LLC. All Rights Reserved. Coldwell Banker Residential Brokerage fully supports the principles of the Fair Housing Act and the Equal Opportunity Act. Coldwell Banker Residential Brokerage is operated by a subsidiary of NRT LLC. Coldwell Banker and the Coldwell Banker Logo are registered service marks owned by Coldwell Banker Real Estate LLC.

Based on information from Midwest Real Estate Data LLC for the period 5/1/2013 through 4/30/2016. Due to MLS reporting methods and allowable reporting policy, this data is only informational and may not be completely accurate. Therefore, Coldwell Banker Residential Brokerage does not guarantee the data accuracy. Data maintained by the MLS's may not reflect all real estate activity in the market.



## MLS Area: Glencoe



**ART WILSON**  
 Broker, Realtor  
 847-363-1599  
 www.NorthShoreHomesOnline.com  
 Art.Wilson@cbexchange.com

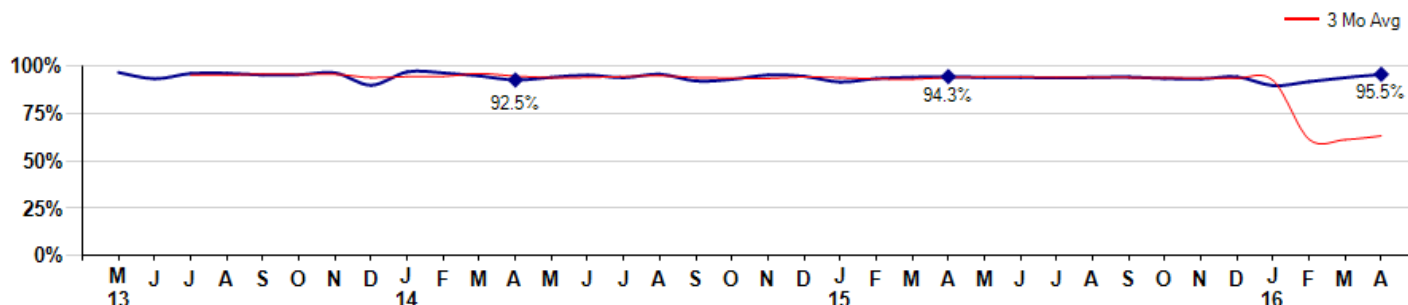


Price Range: \$0 to \$999,999,000 | Properties: Single Family Home, Townhome, Condo

### Selling Price vs Listing Price

The Selling Price vs Listing Price reveals the average amount that Sellers are agreeing to come down from their list price. The lower the ratio is below 100% the more of a Buyer's market exists, a ratio at or above 100% indicates more of a Seller's market. The April 2016 Selling Price vs List Price of 95.5% was up from 93.8% last month and up from 94.3% in April of last year.

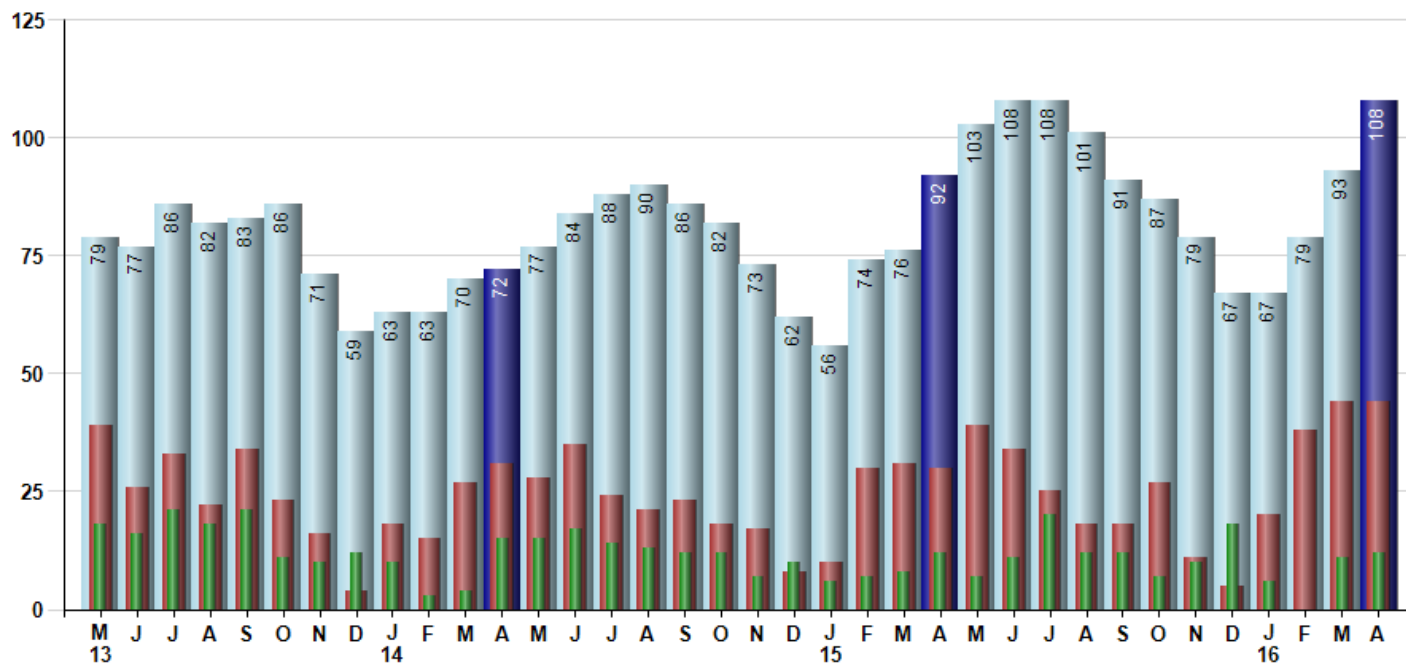
Avg Selling Price divided by Avg Listing Price for sold properties during the month



### Inventory / New Listings / Sales

This last view of the market combines monthly inventory of Properties for sale along with New Listings and Sales. The graph shows the basic annual seasonality of the market as well as the relationship between these items. The number of New Listings in April 2016 was 44, equal to 44 last month and up 46.7% from 30 in April of last year.

Inventory (light blue), New Listings (red), Sold (green)



© 2016 Coldwell Banker Real Estate LLC. All Rights Reserved. Coldwell Banker Residential Brokerage fully supports the principles of the Fair Housing Act and the Equal Opportunity Act. Coldwell Banker Residential Brokerage is operated by a subsidiary of NRT LLC. Coldwell Banker and the Coldwell Banker Logo are registered service marks owned by Coldwell Banker Real Estate LLC.

Based on information from Midwest Real Estate Data LLC for the period 5/1/2013 through 4/30/2016. Due to MLS reporting methods and allowable reporting policy, this data is only informational and may not be completely accurate. Therefore, Coldwell Banker Residential Brokerage does not guarantee the data accuracy. Data maintained by the MLS's may not reflect all real estate activity in the market.



# MARKET ACTION REPORT

April 2016

## MLS Area: Glencoe



**ART WILSON**  
 Broker, Realtor  
 847-363-1599  
 www.NorthShoreHomesOnline.com  
 Art.Wilson@cbexchange.com



Price Range: \$0 to \$999,999,000 | Properties: Single Family Home, Townhome, Condo

	M 13	J	J	A	S	O	N	D	J 14	F	M	A	M	J	J	A	S	O	N	D	J 15	F	M	A	M	J	J	A	S	O	N	D	J 16	F	M	A
Homes Sold	18	16	21	18	21	11	10	12	10	3	4	15	15	17	14	13	12	12	7	10	6	7	8	12	7	11	20	12	12	7	10	18	6	0	11	12
3 Mo. Roll Avg			18	18	20	17	14	11	11	8	6	7	11	16	15	15	13	12	10	10	8	8	7	9	9	10	13	14	15	10	10	12	11	8	6	8

	(000's) M 13	J	J	A	S	O	N	D	J 14	F	M	A	M	J	J	A	S	O	N	D	J 15	F	M	A	M	J	J	A	S	O	N	D	J 16	F	M	A
Median Sale Price	880	1,263	1,220	858	930	700	920	863	1,081	740	825	820	1,035	1,025	878	970	890	736	777	955	740	655	902	1,048	1,165	930	1,250	1,013	791	720	857	733	478	0	670	1,310
3 Mo. Roll Avg			1,121	1,113	1,003	829	850	827	954	894	882	795	893	960	979	958	913	865	801	823	824	783	766	868	1,038	1,048	1,115	1,064	1,018	841	789	770	689	403	383	660

	M 13	J	J	A	S	O	N	D	J 14	F	M	A	M	J	J	A	S	O	N	D	J 15	F	M	A	M	J	J	A	S	O	N	D	J 16	F	M	A
Inventory	79	77	86	82	83	86	71	59	63	63	70	72	77	84	88	90	86	82	73	62	56	74	76	92	103	108	108	101	91	87	79	67	67	79	93	108
MSI	4	5	4	5	4	8	7	5	6	21	18	5	5	5	6	7	7	7	10	6	9	11	10	8	15	10	5	8	8	12	8	4	11	0	8	9

	M 13	J	J	A	S	O	N	D	J 14	F	M	A	M	J	J	A	S	O	N	D	J 15	F	M	A	M	J	J	A	S	O	N	D	J 16	F	M	A
Days On Market	67	175	65	66	39	47	28	44	71	49	124	80	92	36	65	63	44	51	39	73	186	47	43	92	149	135	53	45	57	52	71	42	98	0	52	32
3 Mo. Roll Avg			102	102	57	51	38	40	48	55	81	84	99	69	64	55	57	53	45	54	99	102	92	61	95	125	112	78	52	51	60	55	70	47	50	28

	M 13	J	J	A	S	O	N	D	J 14	F	M	A	M	J	J	A	S	O	N	D	J 15	F	M	A	M	J	J	A	S	O	N	D	J 16	F	M	A
Price per Sq Ft	257	310	307	295	328	261	255	295	305	297	226	261	282	327	327	279	266	348	327	297	374	251	377	292	351	286	310	315	255	253	306	272	265	0	242	334
3 Mo. Roll Avg			291	304	310	295	281	270	285	299	276	261	256	290	312	311	291	298	314	324	333	307	334	307	340	310	316	304	293	274	271	277	281	179	169	192

	M 13	J	J	A	S	O	N	D	J 14	F	M	A	M	J	J	A	S	O	N	D	J 15	F	M	A	M	J	J	A	S	O	N	D	J 16	F	M	A
Sale to List Price	0.965	0.932	0.960	0.960	0.952	0.952	0.963	0.898	0.968	0.963	0.947	0.925	0.940	0.951	0.938	0.956	0.920	0.929	0.952	0.945	0.915	0.933	0.940	0.943	0.939	0.940	0.936	0.939	0.941	0.933	0.931	0.942	0.896	0.000	0.938	0.955
3 Mo. Roll Avg			0.952	0.951	0.957	0.955	0.956	0.938	0.943	0.943	0.959	0.945	0.937	0.939	0.943	0.948	0.938	0.935	0.934	0.942	0.937	0.931	0.929	0.939	0.941	0.941	0.938	0.938	0.939	0.938	0.935	0.935	0.923	0.613	0.611	0.631

	M 13	J	J	A	S	O	N	D	J 14	F	M	A	M	J	J	A	S	O	N	D	J 15	F	M	A	M	J	J	A	S	O	N	D	J 16	F	M	A
New Listings	39	26	33	22	34	23	16	4	18	15	27	31	28	35	24	21	23	18	17	8	10	30	31	30	39	34	25	18	18	27	11	5	20	38	44	44
Inventory	79	77	86	82	83	86	71	59	63	63	70	72	77	84	88	90	86	82	73	62	56	74	76	92	103	108	108	101	91	87	79	67	67	79	93	108
Sales	18	16	21	18	21	11	10	12	10	3	4	15	15	17	14	13	12	12	7	10	6	7	8	12	7	11	20	12	12	7	10	18	6	0	11	12

	(000's) M 13	J	J	A	S	O	N	D	J 14	F	M	A	M	J	J	A	S	O	N	D	J 15	F	M	A	M	J	J	A	S	O	N	D	J 16	F	M	A
Avg Sale Price	1,028	1,301	1,269	979	1,223	799	1,637	968	998	951	1,403	1,033	1,024	1,339	1,115	1,405	1,265	1,429	1,055	1,102	1,167	706	1,313	1,123	1,136	969	1,237	1,075	1,016	763	919	946	674	0	771	1,481
3 Mo. Roll Avg			1,199	1,183	1,157	1,000	1,220	1,135	1,201	972	1,117	1,129	1,154	1,132	1,160	1,287	1,262	1,366	1,249	1,195	1,108	992	1,062	1,047	1,191	1,076	1,114	1,094	1,109	951	899	876	846	540	482	751

© 2016 Coldwell Banker Real Estate LLC. All Rights Reserved. Coldwell Banker Residential Brokerage fully supports the principles of the Fair Housing Act and the Equal Opportunity Act. Coldwell Banker Residential Brokerage is operated by a subsidiary of NRT LLC. Coldwell Banker and the Coldwell Banker Logo are registered service marks owned by Coldwell Banker Real Estate LLC.

Based on information from Midwest Real Estate Data LLC for the period 5/1/2013 through 4/30/2016. Due to MLS reporting methods and allowable reporting policy, this data is only informational and may not be completely accurate. Therefore, Coldwell Banker Residential Brokerage does not guarantee the data accuracy. Data maintained by the MLS's may not reflect all real estate activity in the market.

