

## MLS Area: Lincolnshire



**ART WILSON**

Broker, Realtor

847-363-1599

www.NorthShoreHomesOnline.com

Art.Wilson@cbexchange.com



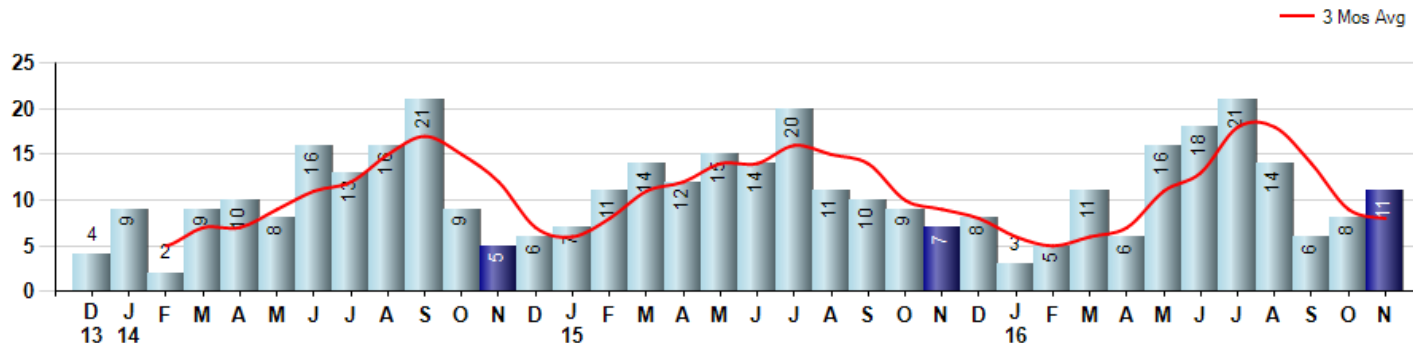
Price Range: \$0 to \$999,999,000 | Properties: Single Family Home, Townhome, Condo

Market Profile & Trends Overview	Month	Trending Versus*:				YTD	Trending Versus*:	
		LM	L3M	PYM	LY		PriorYTD	PriorYear
Median List Price of all Current Listings	\$582,945	↔		↑				
Average List Price of all Current Listings	\$662,401	↓		↑				
November Median Sales Price	\$575,000	↑	↑	↓	↑	\$483,000	↓	↓
November Average Sales Price	\$550,673	↑	↑	↓	↔	\$518,702	↓	↓
Total Properties Currently for Sale (Inventory)	64	↓		↑			↓	↓
November Number of Properties Sold	11	↑		↑		119	↓	
November Average Days on Market (Solds)	57	↓	↓	↓	↓	57	↓	↓
November Month's Supply of Inventory	5.8	↓	↓	↓	↔	9.0	↑	↑
November Sale Price vs List Price Ratio	94.7%	↑	↓	↑	↓	95.4%	↔	↔

\* LM=Last Month / L3M=Last 3 Months / PYM=Same Month Prior Year / LY=Last Year / YTD = Year-to-date

### Property Sales

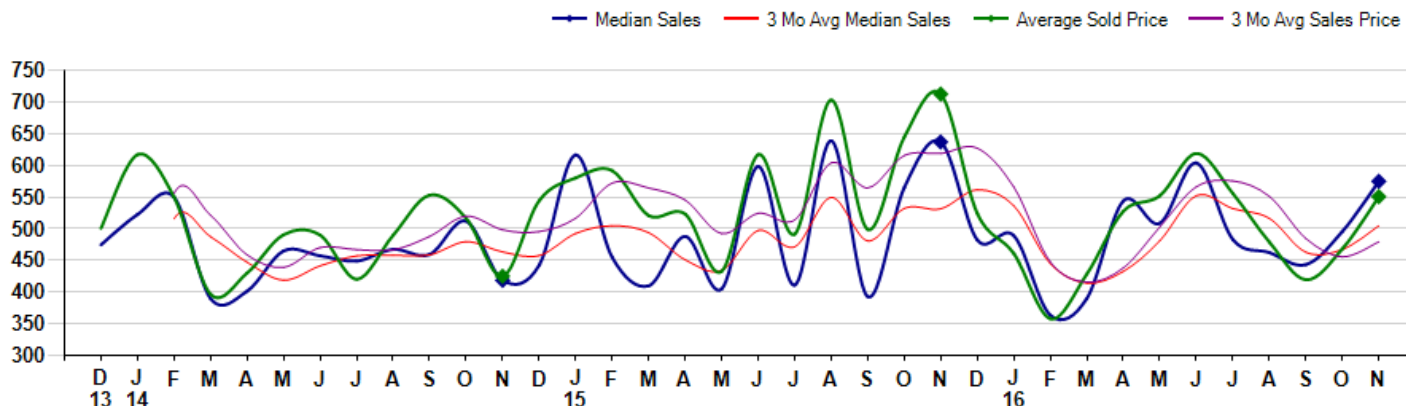
November Property sales were 11, up 57.1% from 7 in November of 2015 and 37.5% higher than the 8 sales last month. November 2016 sales were at their highest level compared to November of 2015 and 2014. November YTD sales of 119 are running -8.5% behind last year's year-to-date sales of 130.



### Prices

The Median Sales Price in November was \$575,000, down -9.7% from \$637,000 in November of 2015 and up 16.0% from \$495,875 last month. The Average Sales Price in November was \$550,673, down -22.7% from \$712,786 in November of 2015 and up 17.6% from \$468,395 last month. November 2016 ASP was at a mid range compared to November of 2015 and 2014.

Median means Middle (the same # of properties sold above and below Median) (000's)



© 2016 Coldwell Banker Real Estate LLC. All Rights Reserved. Coldwell Banker Residential Brokerage fully supports the principles of the Fair Housing Act and the Equal Opportunity Act. Coldwell Banker Residential Brokerage is operated by a subsidiary of NRT LLC. Coldwell Banker and the Coldwell Banker Logo are registered service marks owned by Coldwell Banker Real Estate LLC.

Based on information from Midwest Real Estate Data LLC for the period 12/1/2013 through 11/30/2016. Due to MLS reporting methods and allowable reporting policy, this data is only informational and may not be completely accurate. Therefore, Coldwell Banker Residential Brokerage does not guarantee the data accuracy. Data maintained by the MLS's may not reflect all real estate activity in the market.



## MLS Area: Lincolnshire



**ART WILSON**  
Broker, Realtor  
847-363-1599  
www.NorthShoreHomesOnline.com  
Art.Wilson@cbexchange.com



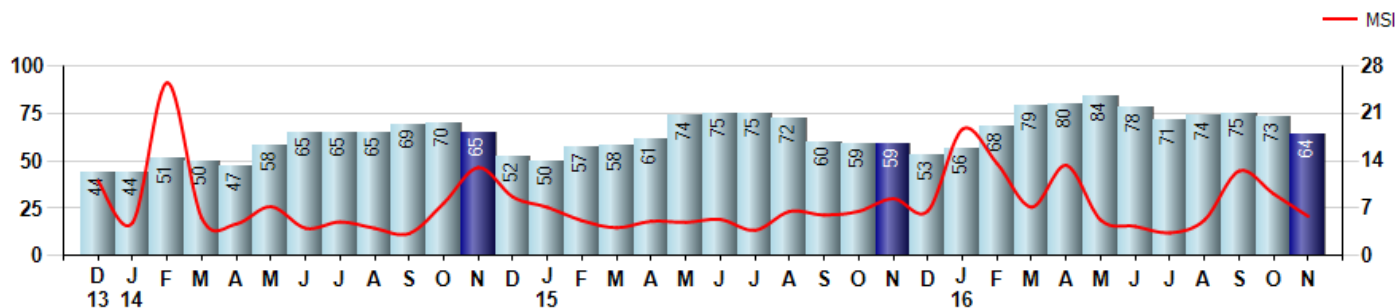
Price Range: \$0 to \$999,999,000 | Properties: Single Family Home, Townhome, Condo

### Inventory & MSI

The Total Inventory of Properties available for sale as of November was 64, down -12.3% from 73 last month and up 8.5% from 59 in November of last year. November 2016 Inventory was at a mid range compared to November of 2015 and 2014.

A comparatively lower MSI is more beneficial for sellers while a higher MSI is better for buyers. The November 2016 MSI of 5.8 months was at its lowest level compared with November of 2015 and 2014.

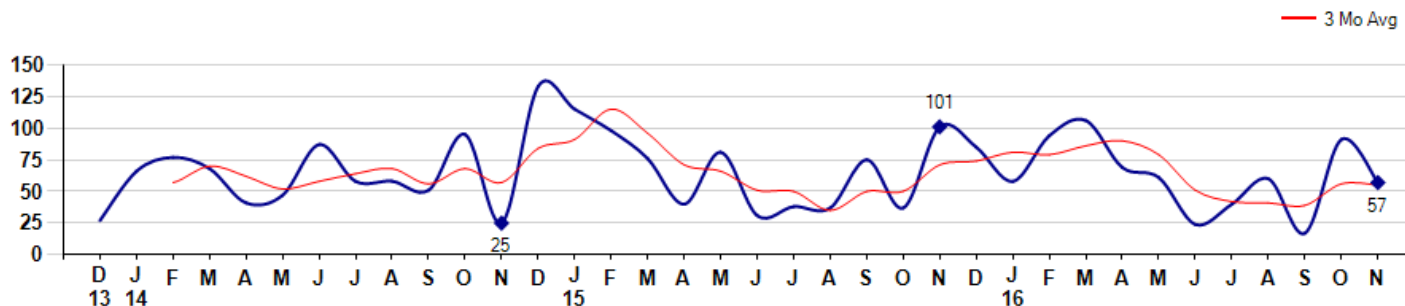
MSI is the # of months needed to sell all of the Inventory at the monthly Sales Pace



### Market Time

The average Days On Market(DOM) shows how many days the average Property is on the Market before it sells. An upward trend in DOM tends to indicate a move towards more of a Buyer's market, a downward trend a move towards more of a Seller's market. The DOM for November was 57, down -37.4% from 91 days last month and down -43.6% from 101 days in November of last year. The November 2016 DOM was at a mid range compared with November of 2015 and 2014.

Average Days on Market(Listing to Contract) for properties sold during the month



© 2016 Coldwell Banker Real Estate LLC. All Rights Reserved. Coldwell Banker Residential Brokerage fully supports the principles of the Fair Housing Act and the Equal Opportunity Act. Coldwell Banker Residential Brokerage is operated by a subsidiary of NRT LLC. Coldwell Banker and the Coldwell Banker Logo are registered service marks owned by Coldwell Banker Real Estate LLC.

Based on information from Midwest Real Estate Data LLC for the period 12/1/2013 through 11/30/2016. Due to MLS reporting methods and allowable reporting policy, this data is only informational and may not be completely accurate. Therefore, Coldwell Banker Residential Brokerage does not guarantee the data accuracy. Data maintained by the MLS's may not reflect all real estate activity in the market.



## MLS Area: Lincolnshire



**ART WILSON**  
Broker, Realtor  
847-363-1599  
www.NorthShoreHomesOnline.com  
Art.Wilson@cbexchange.com

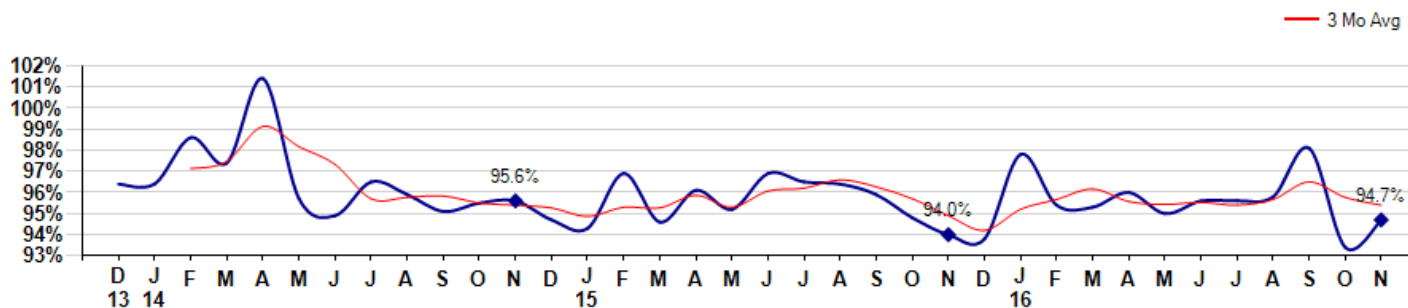


Price Range: \$0 to \$999,999,000 | Properties: Single Family Home, Townhome, Condo

### Selling Price vs Listing Price

The Selling Price vs Listing Price reveals the average amount that Sellers are agreeing to come down from their list price. The lower the ratio is below 100% the more of a Buyer's market exists, a ratio at or above 100% indicates more of a Seller's market. The November 2016 Selling Price vs List Price of 94.7% was up from 93.4% last month and up from 94.0% in November of last year.

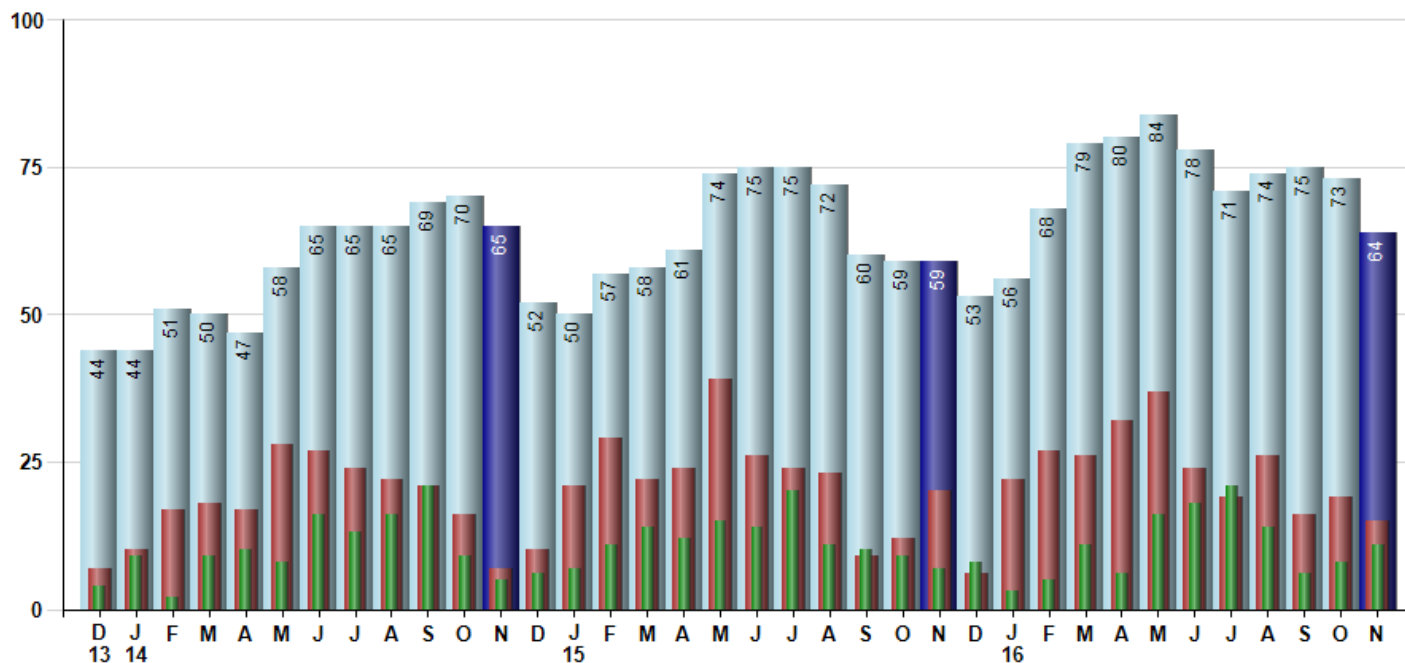
Avg Selling Price divided by Avg Listing Price for sold properties during the month



### Inventory / New Listings / Sales

This last view of the market combines monthly inventory of Properties for sale along with New Listings and Sales. The graph shows the basic annual seasonality of the market as well as the relationship between these items. The number of New Listings in November 2016 was 15, down -21.1% from 19 last month and down -25.0% from 20 in November of last year.

Inventory (light blue), New Listings (red), Sold (green)



© 2016 Coldwell Banker Real Estate LLC. All Rights Reserved. Coldwell Banker Residential Brokerage fully supports the principles of the Fair Housing Act and the Equal Opportunity Act. Coldwell Banker Residential Brokerage is operated by a subsidiary of NRT LLC. Coldwell Banker and the Coldwell Banker Logo are registered service marks owned by Coldwell Banker Real Estate LLC.

Based on information from Midwest Real Estate Data LLC for the period 12/1/2013 through 11/30/2016. Due to MLS reporting methods and allowable reporting policy, this data is only informational and may not be completely accurate. Therefore, Coldwell Banker Residential Brokerage does not guarantee the data accuracy. Data maintained by the MLS's may not reflect all real estate activity in the market.



## MLS Area: Lincolnshire



**ART WILSON**  
 Broker, Realtor  
 847-363-1599  
 www.NorthShoreHomesOnline.com  
 Art.Wilson@cbexchange.com



Price Range: \$0 to \$999,999,000 | Properties: Single Family Home, Townhome, Condo

	D 13	J 14	F	M	A	M	J	J	A	S	O	N	D	J 15	F	M	A	M	J	J	A	S	O	N	D	J 16	F	M	A	M	J	J	A	S	O	N
Homes Sold	4	9	2	9	10	8	16	13	16	21	9	5	6	7	11	14	12	15	14	20	11	10	9	7	8	3	5	11	6	16	18	21	14	6	8	11
3 Mo. Roll Avg			5	7	7	9	11	12	15	17	15	12	7	6	8	11	12	14	14	16	15	14	10	9	8	6	5	6	7	11	13	18	18	14	9	8

(000's)	D 13	J 14	F	M	A	M	J	J	A	S	O	N	D	J 15	F	M	A	M	J	J	A	S	O	N	D	J 16	F	M	A	M	J	J	A	S	O	N
Median Sale Price	475	523	550	390	402	465	458	449	468	460	512	419	443	617	455	410	488	405	599	411	639	393	565	637	483	489	364	390	544	509	604	483	463	443	496	575
3 Mo. Roll Avg			516	488	447	419	441	457	458	459	480	463	458	493	505	494	451	434	497	472	549	481	532	532	562	536	445	414	433	481	552	532	517	463	467	505

	D 13	J 14	F	M	A	M	J	J	A	S	O	N	D	J 15	F	M	A	M	J	J	A	S	O	N	D	J 16	F	M	A	M	J	J	A	S	O	N
Inventory	44	44	51	50	47	58	65	65	65	69	70	65	52	50	57	58	61	74	75	75	72	60	59	59	53	56	68	79	80	84	78	71	74	75	73	64
MSI	11	5	26	6	5	7	4	5	4	3	8	13	9	7	5	4	5	5	5	4	7	6	7	8	7	19	14	7	13	5	4	3	5	13	9	6

	D 13	J 14	F	M	A	M	J	J	A	S	O	N	D	J 15	F	M	A	M	J	J	A	S	O	N	D	J 16	F	M	A	M	J	J	A	S	O	N
Days On Market	27	66	77	68	41	47	87	58	58	51	95	25	133	115	98	76	40	81	31	38	37	75	37	101	85	58	94	106	69	61	24	40	60	17	91	57
3 Mo. Roll Avg			57	70	62	52	58	64	68	56	68	57	84	91	115	96	71	66	51	50	35	50	50	71	74	81	79	86	90	79	51	42	41	39	56	55

	D 13	J 14	F	M	A	M	J	J	A	S	O	N	D	J 15	F	M	A	M	J	J	A	S	O	N	D	J 16	F	M	A	M	J	J	A	S	O	N
Price per Sq Ft	193	176	174	167	174	180	174	162	187	198	186	164	179	185	200	178	197	164	207	174	210	171	215	220	187	213	189	170	202	187	206	187	182	184	171	180
3 Mo. Roll Avg			181	172	172	174	176	172	174	182	190	183	176	176	188	188	192	180	189	182	197	185	199	202	207	207	196	191	187	186	198	193	192	184	179	178

	D 13	J 14	F	M	A	M	J	J	A	S	O	N	D	J 15	F	M	A	M	J	J	A	S	O	N	D	J 16	F	M	A	M	J	J	A	S	O	N
Sale to List Price	0.964	0.964	0.986	0.974	1.014	0.957	0.949	0.965	0.959	0.951	0.955	0.956	0.947	0.943	0.969	0.946	0.961	0.952	0.969	0.965	0.964	0.959	0.948	0.940	0.938	0.978	0.954	0.953	0.960	0.950	0.956	0.956	0.958	0.981	0.934	0.947
3 Mo. Roll Avg			0.971	0.975	0.991	0.982	0.973	0.957	0.958	0.958	0.955	0.954	0.953	0.949	0.953	0.953	0.959	0.953	0.961	0.962	0.966	0.963	0.957	0.949	0.942	0.952	0.957	0.962	0.956	0.954	0.955	0.954	0.957	0.965	0.958	0.954

	D 13	J 14	F	M	A	M	J	J	A	S	O	N	D	J 15	F	M	A	M	J	J	A	S	O	N	D	J 16	F	M	A	M	J	J	A	S	O	N
New Listings	7	10	17	18	17	28	27	24	22	21	16	7	10	21	29	22	24	39	26	24	23	9	12	20	6	22	27	26	32	37	24	19	26	16	19	15
Inventory	44	44	51	50	47	58	65	65	65	69	70	65	52	50	57	58	61	74	75	75	72	60	59	59	53	56	68	79	80	84	78	71	74	75	73	64
Sales	4	9	2	9	10	8	16	13	16	21	9	5	6	7	11	14	12	15	14	20	11	10	9	7	8	3	5	11	6	16	18	21	14	6	8	11

(000's)	D 13	J 14	F	M	A	M	J	J	A	S	O	N	D	J 15	F	M	A	M	J	J	A	S	O	N	D	J 16	F	M	A	M	J	J	A	S	O	N
Avg Sale Price	501	617	550	397	430	491	490	420	490	553	517	425	544	580	592	521	523	433	617	492	703	499	645	713	524	461	358	428	528	552	619	556	479	419	468	551
3 Mo. Roll Avg			556	521	459	439	470	467	467	488	520	498	495	517	572	564	545	492	524	514	604	565	616	619	627	566	448	416	438	503	566	576	551	485	456	480

© 2016 Coldwell Banker Real Estate LLC. All Rights Reserved. Coldwell Banker Residential Brokerage fully supports the principles of the Fair Housing Act and the Equal Opportunity Act. Coldwell Banker Residential Brokerage is operated by a subsidiary of NRT LLC. Coldwell Banker and the Coldwell Banker Logo are registered service marks owned by Coldwell Banker Real Estate LLC.

Based on information from Midwest Real Estate Data LLC for the period 12/1/2013 through 11/30/2016. Due to MLS reporting methods and allowable reporting policy, this data is only informational and may not be completely accurate. Therefore, Coldwell Banker Residential Brokerage does not guarantee the data accuracy. Data maintained by the MLS's may not reflect all real estate activity in the market.

