

## MLS Area: Lake Forest



**ART WILSON**  
 Broker, Realtor  
 847-363-1599  
 Art.Wilson@cbexchange.com



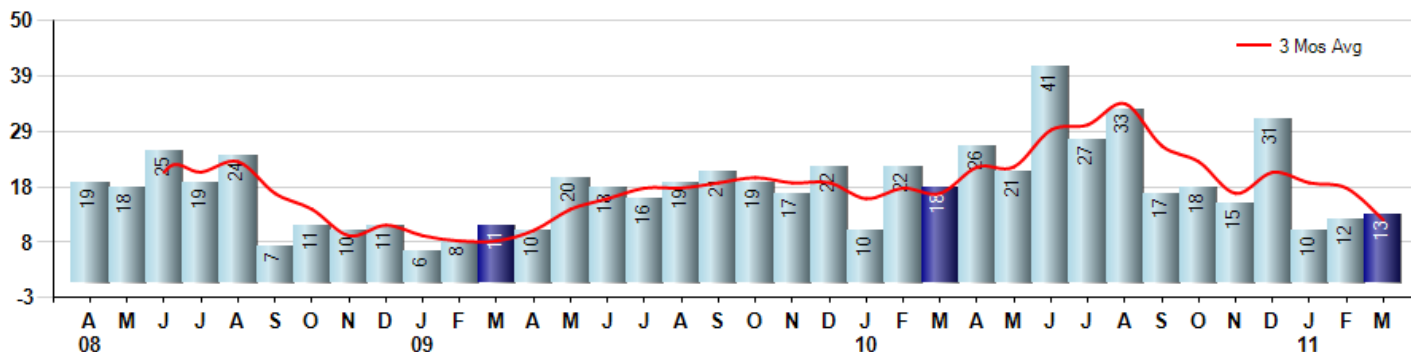
Price Range: ALL | Properties: Single Family Home, Townhome, Condo

Market Profile & Trends Overview	Month	Trending Versus*:				YTD	Trending Versus*:	
		LM	L3M	PYM	LY		PriorYTD	PriorYear
Median List Price of all Current Listings	\$999,000	↓		↓				
Average List Price of all Current Listings	\$1,674,931	↓		↓				
March Median Sales Price	\$830,000	↑	↑	↑	↑	\$720,000	↑	↓
March Average Sales Price	\$1,169,593	↑	↑	↑	↑	\$1,027,756	↑	↑
Total Properties Currently for Sale (Inventory)	332	↔		↓				
March Number of Properties Sold	13	↑		↓		35	↓	
March Average Days on Market (Solds)	206	↑	↑	↓	↑	200	↔	↑
March Month's Supply of Inventory	25.5	↓	↓	↑	↑	28.8	↑	↑
March Sale Price vs List Price Ratio	84.5%	↑	↑	↑	↑	80.8%	↑	↓

\* LM=Last Month / L3M=Last 3 Months / PYM=Same Month Prior Year / LY=Last Year / YTD = Year-to-date

### Property Sales

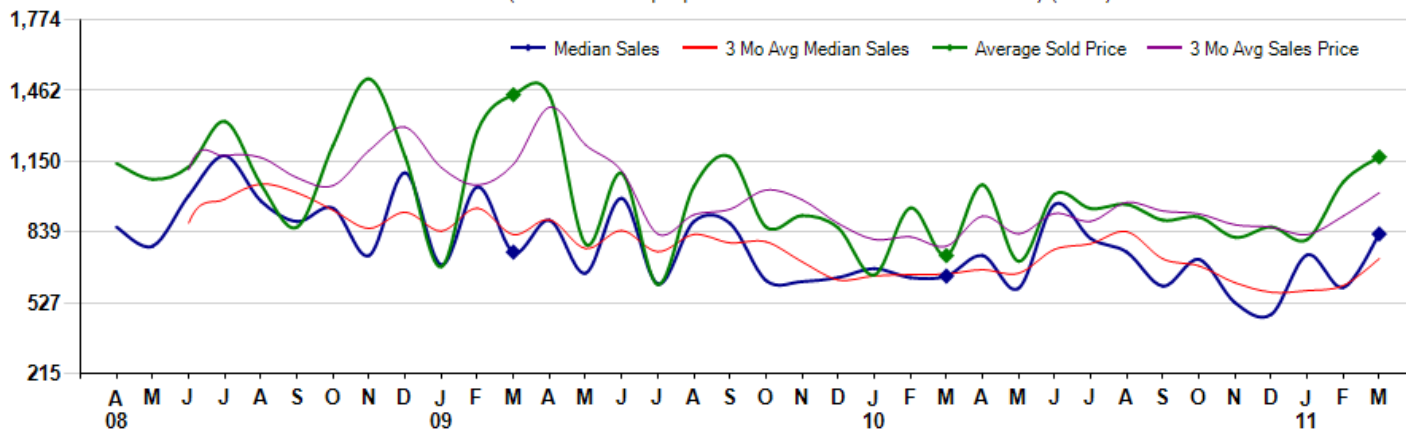
March Property sales were 13, down -27.8% from 18 in March of 2010 and 8.3% higher than the 12 sales last month. March 2011 sales were at a mid level compared to March of 2010 and 2009. March YTD sales of 35 are running -30.0% behind last year's year-to-date sales of 50.



### Prices

The Median Sales Price in March was \$830,000, up 28.9% from \$644,125 in March of 2010 and up 39.7% from \$593,950 last month. The Average Sales Price in March was \$1,169,593, up 59.2% from \$734,474 in March of 2010 and up 10.4% from \$1,059,261 last month. March 2011 ASP was at a mid range compared to March of 2010 and 2009.

Median means Middle (the same # of properties sold above and below Median) (000's)



Based on information from Midwest Real Estate Data LLC for the period 4/1/2008 through 3/31/2011. Due to MLS reporting methods and allowable reporting policy, this data is only informational and may not be completely accurate. Therefore, Coldwell Banker Residential Brokerage does not guarantee the data accuracy. Data maintained by the MLS's may not reflect all real estate activity in the market.



## MLS Area: Lake Forest



**ART WILSON**  
 Broker, Realtor  
 847-363-1599  
 Art.Wilson@cbexchange.com



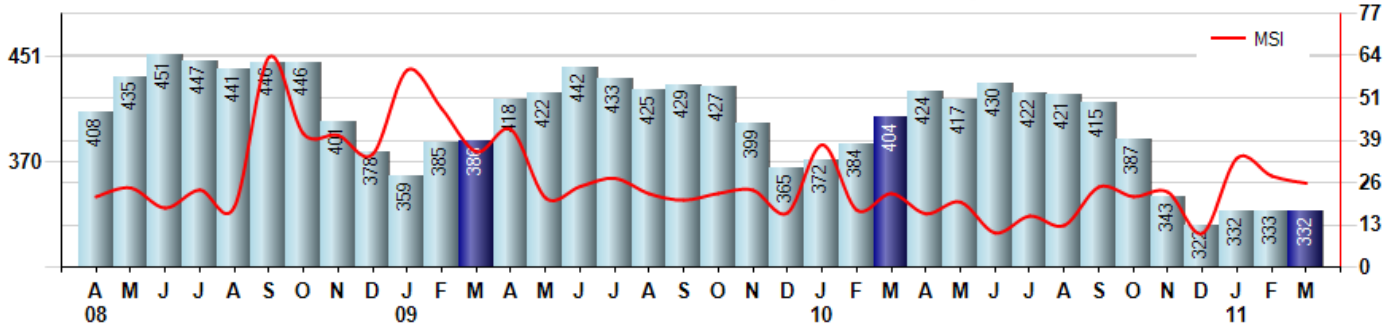
Price Range: ALL | Properties: Single Family Home, Townhome, Condo

### Inventory & MSI

The Total Inventory of Properties available for sale as of March was 332, down -0.3% from 333 last month and down -17.8% from 404 in March of last year. March 2011 Inventory was at the lowest level compared to March of 2010 and 2009.

A comparatively lower MSI is more beneficial for sellers while a higher MSI is better for buyers. The March 2011 MSI of 25.5 months was at a mid range compared with March of 2010 and 2009.

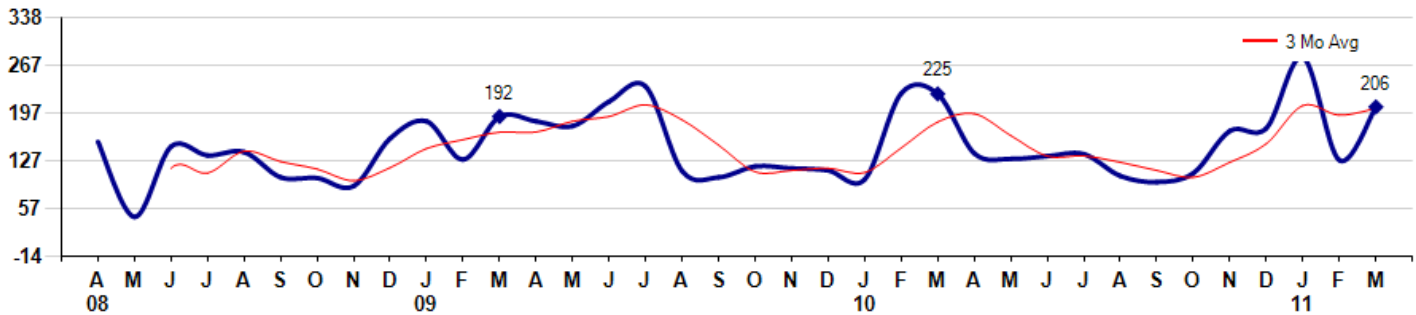
MSI is the # of months needed to sell all of the Inventory at the monthly Sales Pace



### Market Time

The average Days On Market (DOM) shows how many days the average Property is on the Market before it sells. An upward trend in DOM tends to indicate a move towards more of a Buyer's market, a downward trend a move towards more of a Seller's market. The DOM for March was 206, up 60.9% from 128 days last month and down -8.4% from 225 days in March of last year. The March 2011 DOM was at a mid range compared with March of 2010 and 2009.

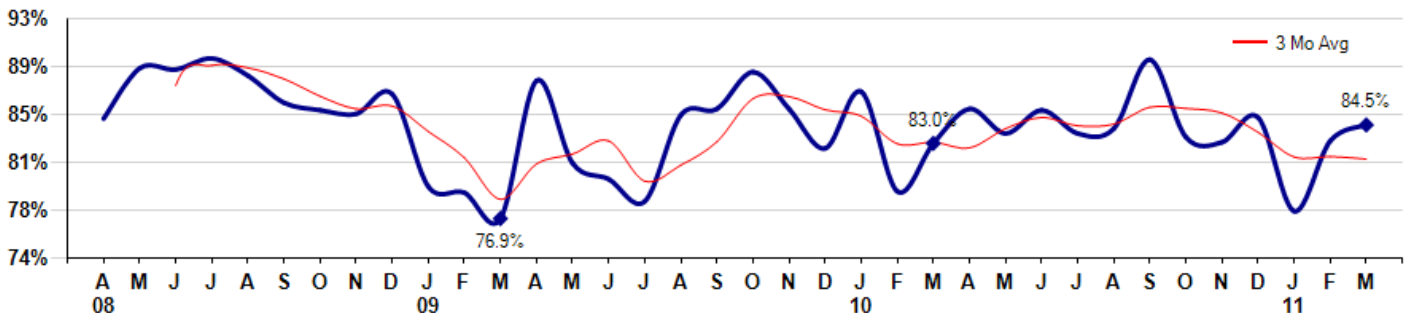
Average Days on Market (Listing to Contract) for properties sold during the month



### Selling Price vs Original Listing Price

The Selling Price vs Original Listing Price reveals the average amount that Sellers are agreeing to come down from their original list price. The lower the ratio is below 100% the more of a Buyer's market exists, a ratio at or above 100% indicates more of a Seller's market. The March 2011 Selling Price vs Original List Price of 84.5% was up from 83.2% last month and up from 83.0% in March of last year.

Avg Selling Price divided by Avg Listing Price for sold properties during the month



Based on information from Midwest Real Estate Data LLC for the period 4/1/2008 through 3/31/2011. Due to MLS reporting methods and allowable reporting policy, this data is only informational and may not be completely accurate. Therefore, Coldwell Banker Residential Brokerage does not guarantee the data accuracy. Data maintained by the MLS's may not reflect all real estate activity in the market.



## MLS Area: Lake Forest



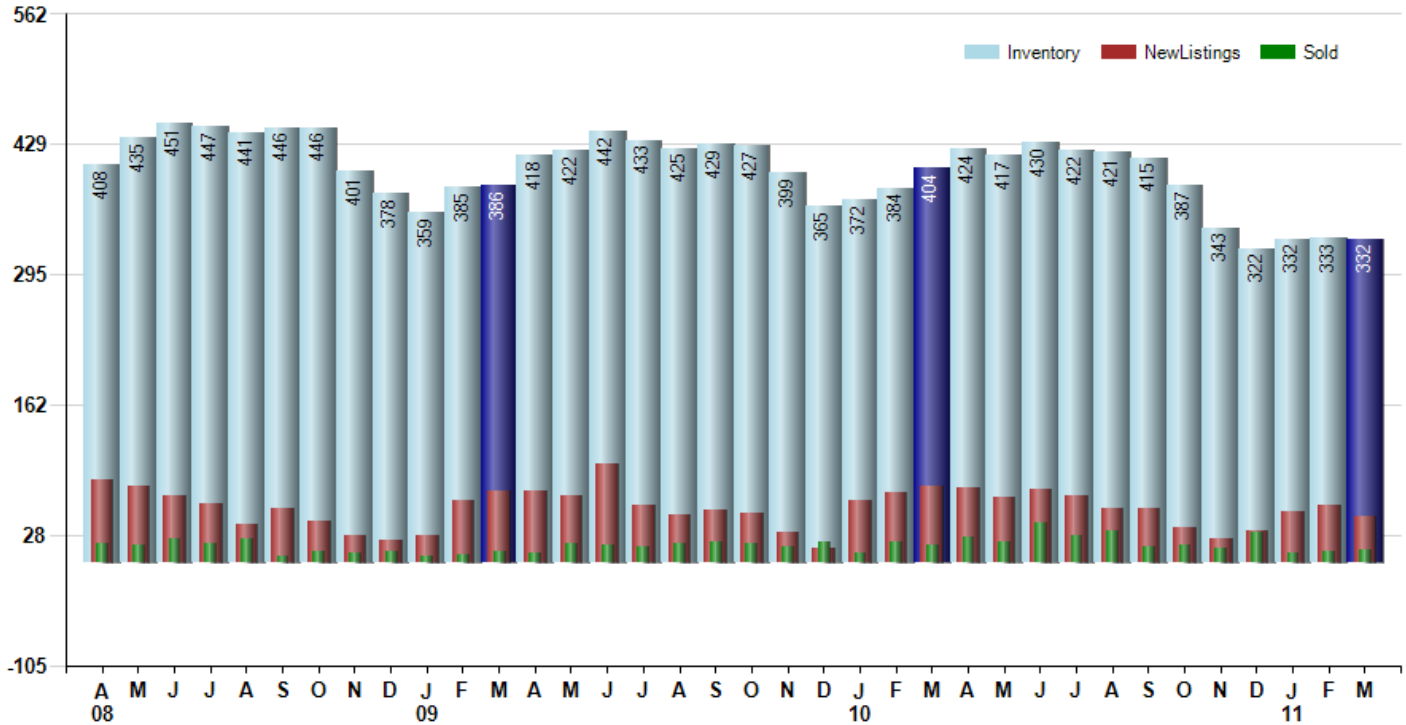
**ART WILSON**  
 Broker, Realtor  
 847-363-1599  
 Art.Wilson@cbexchange.com



Price Range: ALL | Properties: Single Family Home, Townhome, Condo

### Inventory / New Listings / Sales

This last view of the market combines monthly inventory of Properties for sale along with New Listings and Sales. The graph shows the basic annual seasonality of the market as well as the relationship between these items. The number of New Listings in March 2011 was 47, down -20.3% from 59 last month and down -39.7% from 78 in March of last year.



Based on information from Midwest Real Estate Data LLC for the period 4/1/2008 through 3/31/2011. Due to MLS reporting methods and allowable reporting policy, this data is only informational and may not be completely accurate. Therefore, Coldwell Banker Residential Brokerage does not guarantee the data accuracy. Data maintained by the MLS's may not reflect all real estate activity in the market.



## MLS Area: Lake Forest



**ART WILSON**  
 Broker, Realtor  
 847-363-1599  
 Art.Wilson@cbexchange.com



Price Range: ALL | Properties: Single Family Home, Townhome, Condo

	A 08	M	J	J	A	S	O	N	D	J 09	F	M	A	M	J	J	A	S	O	N	D	J 10	F	M	A	M	J	J	A	S	O	N	D	J 11	F	M
Homes Sold	19	18	25	19	24	7	11	10	11	6	8	11	10	20	18	16	19	21	19	17	22	10	22	18	26	21	41	27	33	17	18	15	31	10	12	13
3 Mo. Roll Avg			21	21	23	17	14	9	11	9	8	8	10	14	16	18	18	19	20	19	19	16	18	17	22	22	29	30	34	26	23	17	21	19	18	12

	(000's) A 08	M	J	J	A	S	O	N	D	J 09	F	M	A	M	J	J	A	S	O	N	D	J 10	F	M	A	M	J	J	A	S	O	N	D	J 11	F	M
Median Sale Price	860	776	1,000	1,175	975	885	944	735	1,100	694	1,038	750	890	658	988	610	885	877	625	620	638	678	638	644	735	590	960	810	750	600	718	527	475	738	594	830
3 Mo. Roll Avg			879	984	1,050	1,012	935	855	926	843	944	827	893	766	845	752	828	791	796	707	628	645	651	653	672	656	762	787	840	720	689	615	573	580	602	721

	A 08	M	J	J	A	S	O	N	D	J 09	F	M	A	M	J	J	A	S	O	N	D	J 10	F	M	A	M	J	J	A	S	O	N	D	J 11	F	M
Inventory	408	435	451	447	441	446	446	401	378	359	385	386	418	422	442	433	425	429	427	399	365	372	384	404	424	417	430	422	421	415	387	343	322	332	333	332
MSI	21	24	18	24	18	64	41	40	34	60	48	35	42	21	25	27	22	20	22	23	17	37	17	22	16	20	10	16	13	24	22	23	10	33	28	26

	A 08	M	J	J	A	S	O	N	D	J 09	F	M	A	M	J	J	A	S	O	N	D	J 10	F	M	A	M	J	J	A	S	O	N	D	J 11	F	M
Days On Market	155	45	148	135	140	103	102	90	160	185	129	192	185	178	214	236	112	103	119	116	113	100	226	225	138	130	134	137	105	96	109	171	175	279	128	206
3 Mo. Roll Avg			116	109	141	126	115	98	117	145	158	169	169	185	192	209	187	150	111	113	116	110	146	184	196	164	134	134	125	113	103	125	152	208	194	204

	A 08	M	J	J	A	S	O	N	D	J 09	F	M	A	M	J	J	A	S	O	N	D	J 10	F	M	A	M	J	J	A	S	O	N	D	J 11	F	M
Price per Sq Ft	308	328	333	318	274	304	322	286	317	195	295	309	390	216	238	203	284	266	301	239	228	218	255	220	257	240	277	256	270	261	221	225	266	232	262	241
3 Mo. Roll Avg			323	326	308	299	300	304	308	266	269	266	331	305	281	219	242	251	284	269	256	228	234	231	244	239	258	258	268	262	251	236	237	241	253	245

	A 08	M	J	J	A	S	O	N	D	J 09	F	M	A	M	J	J	A	S	O	N	D	J 10	F	M	A	M	J	J	A	S	O	N	D	J 11	F	M
Sale to List Price	0.850	0.891	0.890	0.899	0.885	0.863	0.857	0.854	0.870	0.795	0.790	0.769	0.881	0.814	0.801	0.783	0.853	0.858	0.888	0.858	0.826	0.872	0.791	0.830	0.858	0.838	0.857	0.838	0.842	0.898	0.835	0.831	0.851	0.775	0.832	0.845
3 Mo. Roll Avg			0.877	0.893	0.891	0.882	0.868	0.858	0.860	0.840	0.818	0.785	0.813	0.821	0.832	0.799	0.812	0.831	0.866	0.868	0.857	0.852	0.830	0.831	0.826	0.842	0.851	0.844	0.846	0.859	0.858	0.855	0.839	0.819	0.819	0.817

	A 08	M	J	J	A	S	O	N	D	J 09	F	M	A	M	J	J	A	S	O	N	D	J 10	F	M	A	M	J	J	A	S	O	N	D	J 11	F	M
New Listings	85	78	68	61	39	56	43	27	23	28	63	73	74	69	101	59	49	54	50	31	15	63	72	78	76	67	75	69	55	56	36	24	33	53	59	47
Inventory	408	435	451	447	441	446	446	401	378	359	385	386	418	422	442	433	425	429	427	399	365	372	384	404	424	417	430	422	421	415	387	343	322	332	333	332
Sales	19	18	25	19	24	7	11	10	11	6	8	11	10	20	18	16	19	21	19	17	22	10	22	18	26	21	41	27	33	17	18	15	31	10	12	13

	(000's) A 08	M	J	J	A	S	O	N	D	J 09	F	M	A	M	J	J	A	S	O	N	D	J 10	F	M	A	M	J	J	A	S	O	N	D	J 11	F	M
Avg Sale Price	1,141	1,071	1,126	1,326	1,048	860	1,220	1,514	1,170	685	1,283	1,444	1,440	786	1,098	607	1,039	1,170	861	911	857	649	945	734	1,047	710	1,005	942	961	891	904	815	861	806	1,059	1,170
3 Mo. Roll Avg			1,113	1,174	1,167	1,078	1,043	1,198	1,301	1,123	1,046	1,137	1,389	1,223	1,108	830	915	939	1,023	981	876	806	817	776	909	830	920	886	969	931	919	870	860	827	909	1,011

