

MLS Area: Wilmette



ART WILSON
 Broker, Realtor
 847-363-1599
 www.NorthShoreHomesOnline.com
 Art.Wilson@cbexchange.com



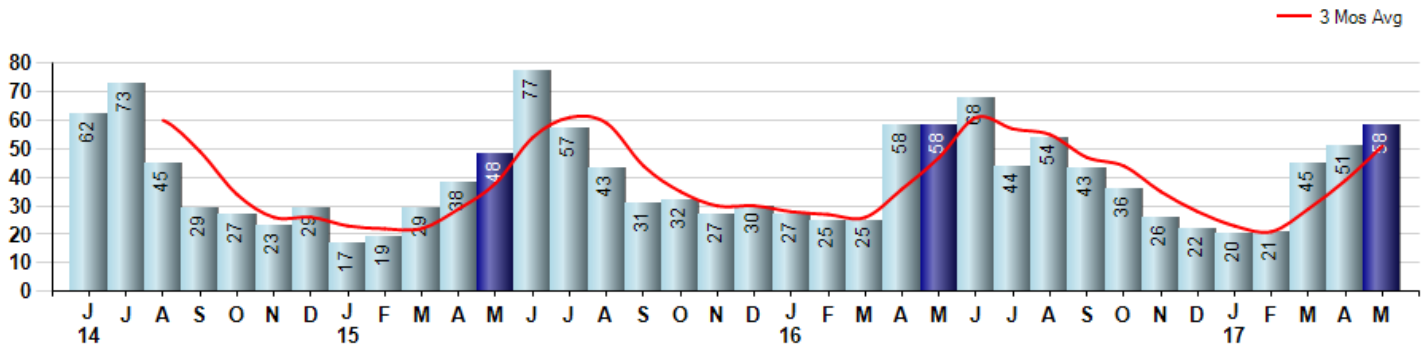
Price Range: 0 to 999999999 | Properties: Single Family Home, Townhome, Condo

Market Profile & Trends Overview	Month	Trending Versus*:				YTD	Trending Versus*:	
		LM	L3M	PYM	LY		PriorYTD	PriorYear
Median List Price of all Current Listings	\$795,000	↑		↑				
Average List Price of all Current Listings	\$896,179	↓		↓				
May Median Sales Price	\$628,750	↓	→	↓	↓	\$615,000	↓	↓
May Average Sales Price	\$712,465	→	↓	↓	↓	\$719,424	↓	↓
Total Properties Currently for Sale (Inventory)	215	→		↓				
May Number of Properties Sold	58	↑		→		195	↑	
May Average Days on Market (Solds)	48	↓	↓	↑	↓	63	↑	↑
May Month's Supply of Inventory	3.7	↓	↓	↓	↓	6.0	↑	↑
May Sale Price vs List Price Ratio	93.0%	↓	↓	↓	↓	93.4%	↓	→

* LM=Last Month / L3M=Last 3 Months / PYM=Same Month Prior Year / LY=Last Year / YTD = Year-to-date

Property Sales

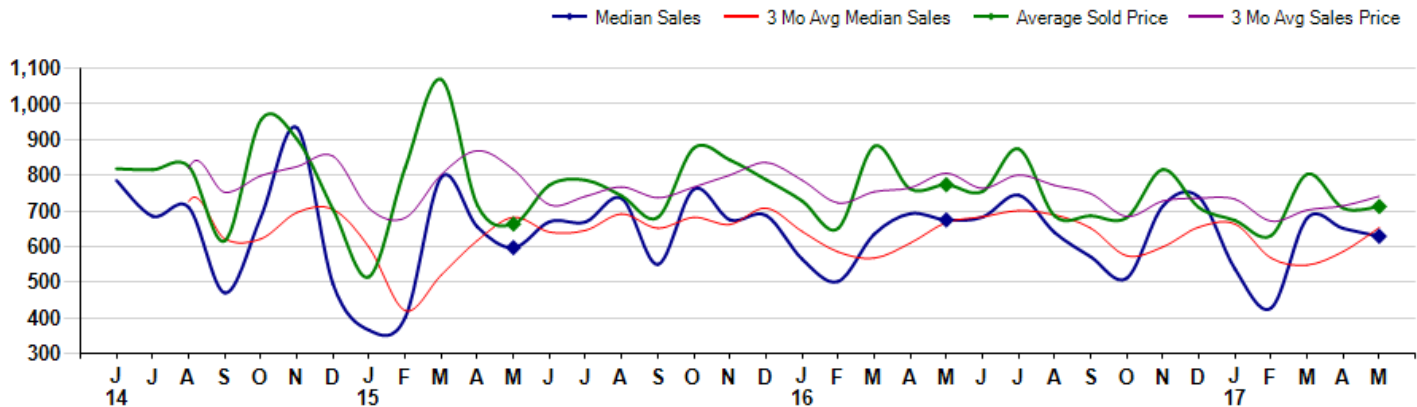
May Property sales were 58, equal to 58 in May of 2016 and 13.7% higher than the 51 sales last month. May 2017 sales were at a mid level compared to May of 2016 and 2015. May YTD sales of 195 are running 1.0% ahead of last year's year-to-date sales of 193.



Prices

The Median Sales Price in May was \$628,750, down -6.8% from \$674,750 in May of 2016 and down -3.4% from \$651,000 last month. The Average Sales Price in May was \$712,465, down -7.9% from \$773,589 in May of 2016 and up 0.6% from \$708,038 last month. May 2017 ASP was at a mid range compared to May of 2016 and 2015.

Median means Middle (the same # of properties sold above and below Median) (000's)



MLS Area: Wilmette



ART WILSON
 Broker, Realtor
 847-363-1599
 www.NorthShoreHomesOnline.com
 Art.Wilson@cbexchange.com



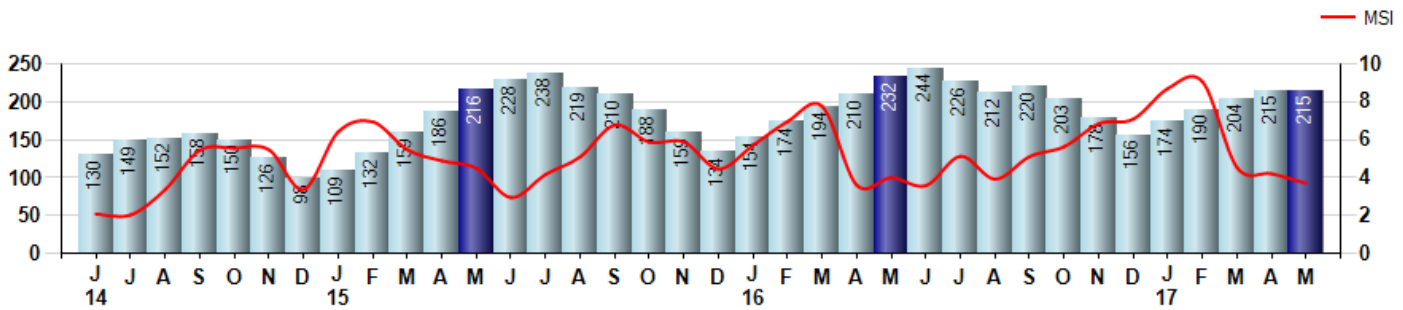
Price Range: 0 to 999999999 | Properties: Single Family Home, Townhome, Condo

Inventory & MSI

The Total Inventory of Properties available for sale as of May was 215, equal to 215 last month and down -7.3% from 232 in May of last year. May 2017 Inventory was at the lowest level compared to May of 2016 and 2015.

A comparatively lower MSI is more beneficial for sellers while a higher MSI is better for buyers. The May 2017 MSI of 3.7 months was at its lowest level compared with May of 2016 and 2015.

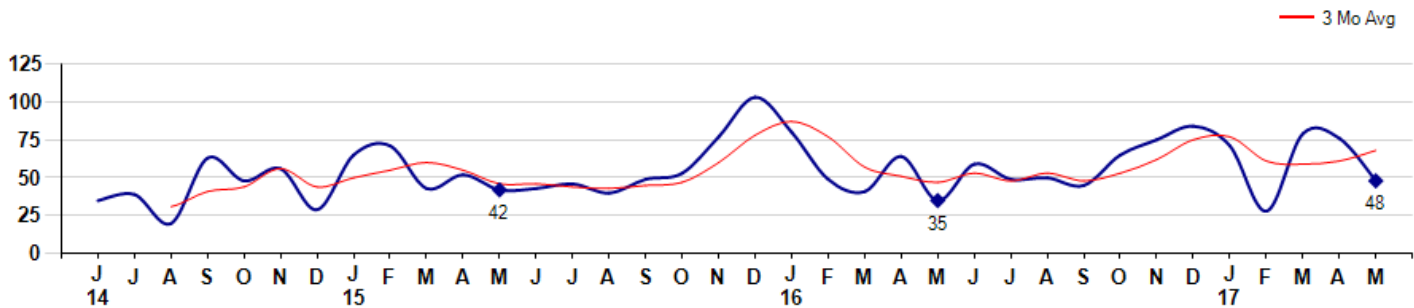
MSI is the # of months needed to sell all of the Inventory at the monthly Sales Pace



Market Time

The average Days On Market(DOM) shows how many days the average Property is on the Market before it sells. An upward trend in DOM tends to indicate a move towards more of a Buyer's market, a downward trend a move towards more of a Seller's market. The DOM for May was 48, down -36.8% from 76 days last month and up 37.1% from 35 days in May of last year. The May 2017 DOM was at its highest level compared with May of 2016 and 2015.

Average Days on Market(Listing to Contract) for properties sold during the month



MLS Area: Wilmette



ART WILSON
 Broker, Realtor
 847-363-1599
 www.NorthShoreHomesOnline.com
 Art.Wilson@cbexchange.com

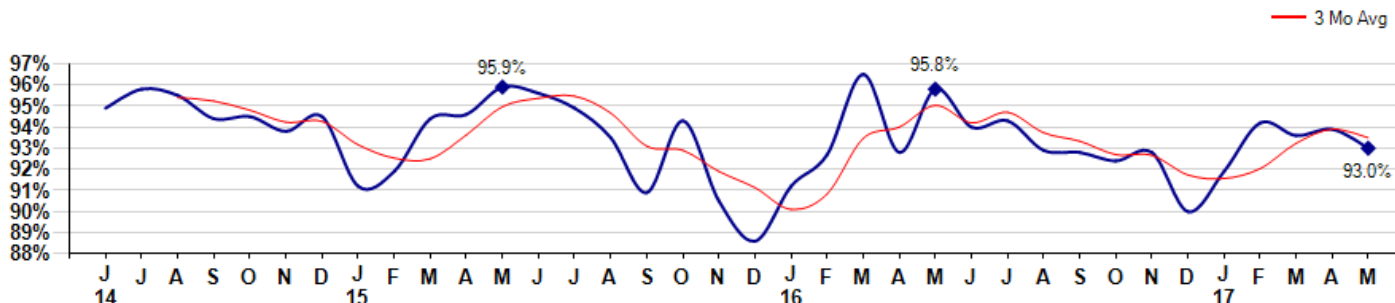


Price Range: 0 to 999999999 | Properties: Single Family Home, Townhome, Condo

Selling Price vs Listing Price

The Selling Price vs Listing Price reveals the average amount that Sellers are agreeing to come down from their list price. The lower the ratio is below 100% the more of a Buyer's market exists, a ratio at or above 100% indicates more of a Seller's market. The May 2017 Selling Price vs List Price of 93.0% was down from 93.9% last month and down from 95.8% in May of last year.

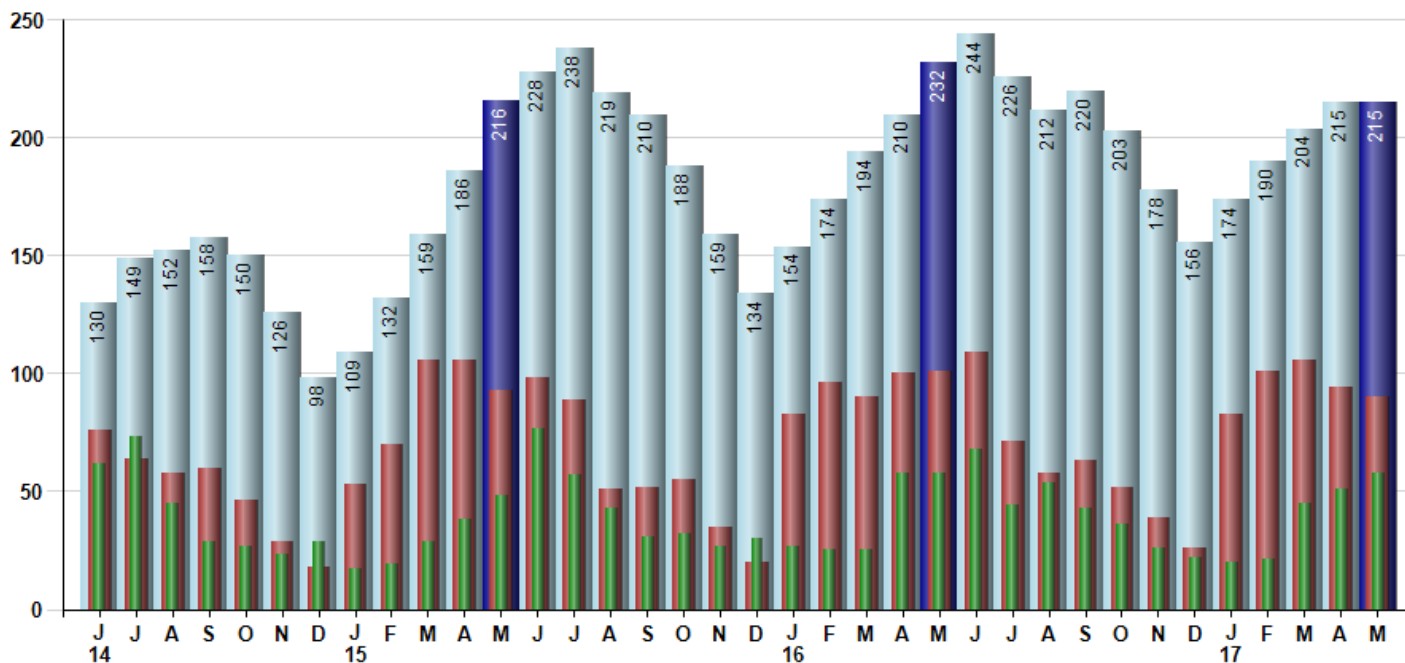
Avg Selling Price divided by Avg Listing Price for sold properties during the month



Inventory / New Listings / Sales

This last view of the market combines monthly inventory of Properties for sale along with New Listings and Sales. The graph shows the basic annual seasonality of the market as well as the relationship between these items. The number of New Listings in May 2017 was 90, down -4.3% from 94 last month and down -10.9% from 101 in May of last year.

Inventory (light blue), New Listings (red), Sold (green)



© 2017 Coldwell Banker Real Estate LLC. All Rights Reserved. Coldwell Banker Residential Brokerage fully supports the principles of the Fair Housing Act and the Equal Opportunity Act. Coldwell Banker Residential Brokerage is operated by a subsidiary of NRT LLC. Coldwell Banker and the Coldwell Banker Logo are registered service marks owned by Coldwell Banker Real Estate LLC.

Based on information from Midwest Real Estate Data LLC for the period 6/1/2014 through 5/31/2017. Due to MLS reporting methods and allowable reporting policy, this data is only informational and may not be completely accurate. Therefore, Coldwell Banker Residential Brokerage does not guarantee the data accuracy. Data maintained by the MLS's may not reflect all real estate activity in the market.



MLS Area: Wilmette



ART WILSON
 Broker, Realtor
 847-363-1599
 www.NorthShoreHomesOnline.com
 Art.Wilson@cbexchange.com



Price Range: 0 to 999999999 | Properties: Single Family Home, Townhome, Condo

	J 14	J	A	S	O	N	D	J 15	F	M	A	M	J	J	A	S	O	N	D	J 16	F	M	A	M	J	J	A	S	O	N	D	J 17	F	M	A	M
Homes Sold	62	73	45	29	27	23	29	17	19	29	38	48	77	57	43	31	32	27	30	27	25	25	58	58	68	44	54	43	36	26	22	20	21	45	51	58
3 Mo. Roll Avg			60	49	34	26	26	23	22	22	29	38	54	61	59	44	35	30	30	28	27	26	36	47	61	57	55	47	44	35	28	23	21	29	39	51

(000's)	J 14	J	A	S	O	N	D	J 15	F	M	A	M	J	J	A	S	O	N	D	J 16	F	M	A	M	J	J	A	S	O	N	D	J 17	F	M	A	M
Median Sale Price	786	685	710	470	684	934	495	365	401	795	655	597	670	669	735	550	761	675	688	565	502	635	693	675	683	745	640	572	511	714	739	537	428	680	651	629
3 Mo. Roll Avg			727	622	621	696	704	598	420	520	617	682	641	645	691	651	682	662	708	643	585	567	610	667	683	701	689	652	574	599	655	663	568	548	586	653

	J 14	J	A	S	O	N	D	J 15	F	M	A	M	J	J	A	S	O	N	D	J 16	F	M	A	M	J	J	A	S	O	N	D	J 17	F	M	A	M
Inventory	130	149	152	158	150	126	98	109	132	159	186	216	228	238	219	210	188	159	134	154	174	194	210	232	244	226	212	220	203	178	156	174	190	204	215	215
MSI	2	2	3	5	6	5	3	6	7	5	5	5	3	4	5	7	6	6	4	6	7	8	4	4	4	5	4	5	6	7	7	9	9	5	4	4

	J 14	J	A	S	O	N	D	J 15	F	M	A	M	J	J	A	S	O	N	D	J 16	F	M	A	M	J	J	A	S	O	N	D	J 17	F	M	A	M
Days On Market	35	39	20	63	48	56	29	65	71	43	52	42	43	46	40	49	53	77	103	80	49	41	64	35	59	49	50	45	65	75	84	71	28	79	76	48
3 Mo. Roll Avg			31	41	44	56	44	50	55	60	55	46	46	44	43	45	47	60	78	87	77	57	51	47	53	48	53	48	53	62	75	77	61	59	61	68

	J 14	J	A	S	O	N	D	J 15	F	M	A	M	J	J	A	S	O	N	D	J 16	F	M	A	M	J	J	A	S	O	N	D	J 17	F	M	A	M
Price per Sq Ft	285	278	291	283	300	249	266	243	235	271	257	281	277	294	280	262	303	292	240	276	247	306	269	271	285	283	290	264	266	318	240	224	258	278	279	275
3 Mo. Roll Avg			285	284	291	277	272	253	248	250	254	270	272	284	284	279	282	286	278	269	254	276	274	282	275	280	286	279	273	283	275	261	241	253	272	277

	J 14	J	A	S	O	N	D	J 15	F	M	A	M	J	J	A	S	O	N	D	J 16	F	M	A	M	J	J	A	S	O	N	D	J 17	F	M	A	M
Sale to List Price	0.949	0.958	0.955	0.944	0.945	0.938	0.945	0.912	0.919	0.944	0.946	0.959	0.956	0.949	0.935	0.909	0.943	0.905	0.886	0.912	0.927	0.965	0.928	0.958	0.940	0.943	0.929	0.928	0.924	0.928	0.900	0.919	0.942	0.936	0.939	0.930
3 Mo. Roll Avg			0.954	0.952	0.948	0.942	0.943	0.932	0.925	0.925	0.936	0.950	0.954	0.955	0.947	0.931	0.929	0.919	0.911	0.901	0.908	0.935	0.940	0.950	0.942	0.947	0.937	0.933	0.927	0.927	0.917	0.916	0.920	0.932	0.939	0.935

	J 14	J	A	S	O	N	D	J 15	F	M	A	M	J	J	A	S	O	N	D	J 16	F	M	A	M	J	J	A	S	O	N	D	J 17	F	M	A	M
New Listings	76	64	58	60	46	29	18	53	70	106	106	93	98	89	51	52	55	35	20	83	96	90	100	101	109	71	58	63	52	39	26	83	101	106	94	90
Inventory	130	149	152	158	150	126	98	109	132	159	186	216	228	238	219	210	188	159	134	154	174	194	210	232	244	226	212	220	203	178	156	174	190	204	215	215
Sales	62	73	45	29	27	23	29	17	19	29	38	48	77	57	43	31	32	27	30	27	25	25	58	58	68	44	54	43	36	26	22	20	21	45	51	58

(000's)	J 14	J	A	S	O	N	D	J 15	F	M	A	M	J	J	A	S	O	N	D	J 16	F	M	A	M	J	J	A	S	O	N	D	J 17	F	M	A	M
Avg Sale Price	819	816	825	616	955	901	704	515	822	1,069	716	663	773	787	742	682	877	843	788	728	651	882	762	774	755	874	686	686	681	816	709	673	631	803	708	712
3 Mo. Roll Avg			820	752	799	824	854	707	681	802	869	816	717	741	767	737	767	801	836	786	722	754	765	806	763	801	772	749	684	728	736	733	671	702	714	741

© 2017 Coldwell Banker Real Estate LLC. All Rights Reserved. Coldwell Banker Residential Brokerage fully supports the principles of the Fair Housing Act and the Equal Opportunity Act. Coldwell Banker Residential Brokerage is operated by a subsidiary of NRT LLC. Coldwell Banker and the Coldwell Banker Logo are registered service marks owned by Coldwell Banker Real Estate LLC.

Based on information from Midwest Real Estate Data LLC for the period 6/1/2014 through 5/31/2017. Due to MLS reporting methods and allowable reporting policy, this data is only informational and may not be completely accurate. Therefore, Coldwell Banker Residential Brokerage does not guarantee the data accuracy. Data maintained by the MLS's may not reflect all real estate activity in the market.

