

MLS Area: Lincolnshire



ART WILSON
Broker, Realtor
847-363-1599
www.NorthShoreHomesOnline.com
Art.Wilson@cbexchange.com



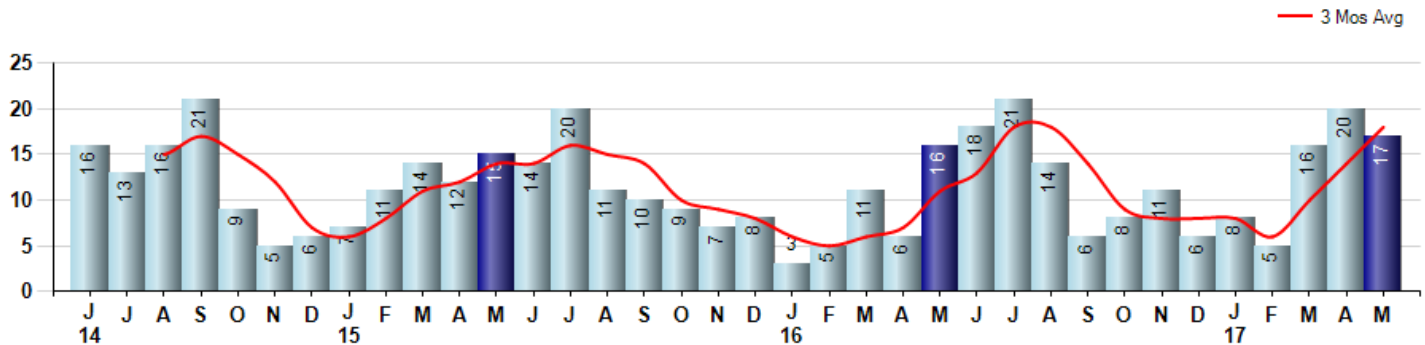
Price Range: 0 to 999999999 | Properties: Single Family Home, Townhome, Condo

Market Profile & Trends Overview	Month	Trending Versus*:				YTD	Trending Versus*:	
		LM	L3M	PYM	LY		PriorYTD	PriorYear
Median List Price of all Current Listings	\$621,950	↑		↑				
Average List Price of all Current Listings	\$750,816	↑		↑				
May Median Sales Price	\$510,500	↑	↑	↔	↑	\$412,500	↓	↓
May Average Sales Price	\$503,048	↑	↑	↓	↔	\$451,995	↓	↓
Total Properties Currently for Sale (Inventory)	70	↑		↓				
May Number of Properties Sold	17	↓		↑		66	↑	
May Average Days on Market (Solds)	66	↓	↓	↑	↑	78	↔	↑
May Month's Supply of Inventory	4.1	↑	↑	↓	↓	6.7	↓	↓
May Sale Price vs List Price Ratio	94.8%	↑	↑	↑	↑	93.5%	↑	↑

* LM=Last Month / L3M=Last 3 Months / PYM=Same Month Prior Year / LY=Last Year / YTD = Year-to-date

Property Sales

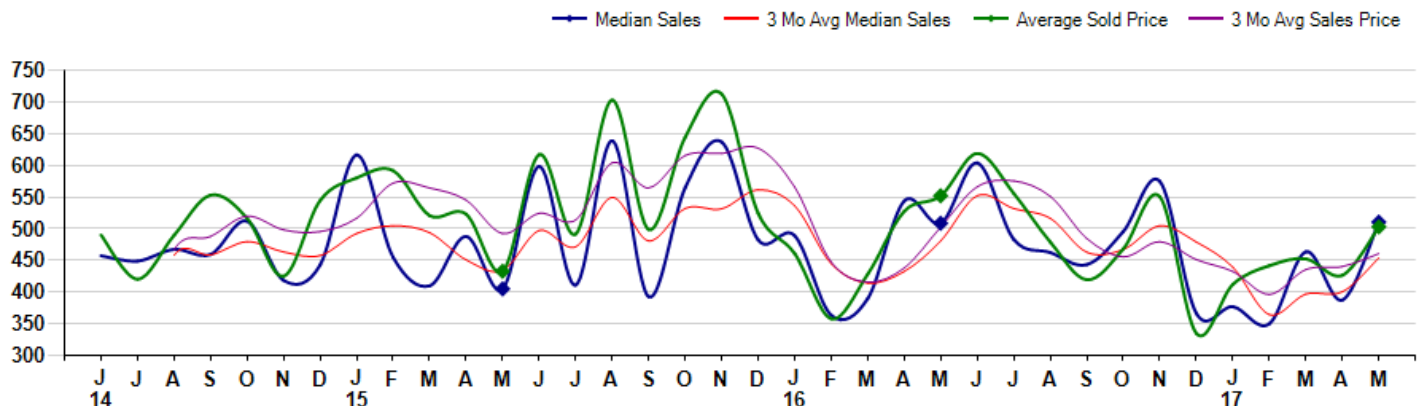
May Property sales were 17, up 6.3% from 16 in May of 2016 and -15.0% lower than the 20 sales last month. May 2017 sales were at their highest level compared to May of 2016 and 2015. May YTD sales of 66 are running 61.0% ahead of last year's year-to-date sales of 41.



Prices

The Median Sales Price in May was \$510,500, up 0.3% from \$508,750 in May of 2016 and up 31.7% from \$387,500 last month. The Average Sales Price in May was \$503,048, down -8.9% from \$552,188 in May of 2016 and up 17.9% from \$426,574 last month. May 2017 ASP was at a mid range compared to May of 2016 and 2015.

Median means Middle (the same # of properties sold above and below Median) (000's)



MLS Area: Lincolnshire



ART WILSON
 Broker, Realtor
 847-363-1599
www.NorthShoreHomesOnline.com
Art.Wilson@cbexchange.com



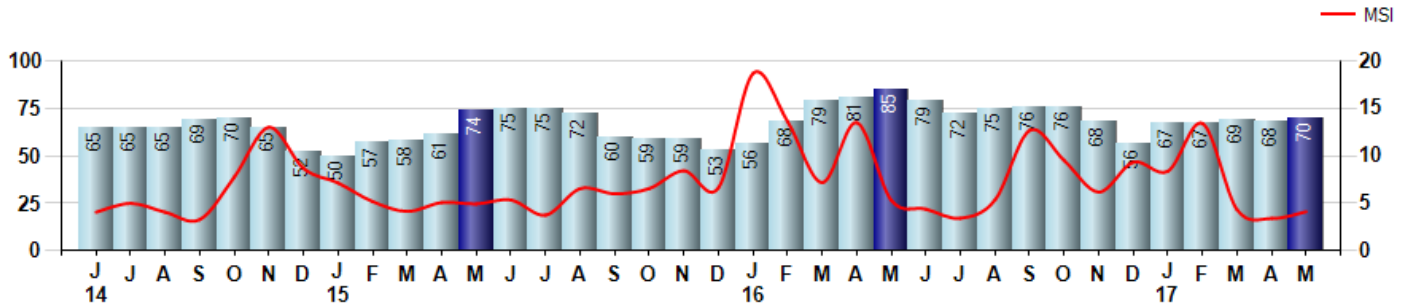
Price Range: 0 to 999999999 | Properties: Single Family Home, Townhome, Condo

Inventory & MSI

The Total Inventory of Properties available for sale as of May was 70, up 2.9% from 68 last month and down -17.6% from 85 in May of last year. May 2017 Inventory was at the lowest level compared to May of 2016 and 2015.

A comparatively lower MSI is more beneficial for sellers while a higher MSI is better for buyers. The May 2017 MSI of 4.1 months was at its lowest level compared with May of 2016 and 2015.

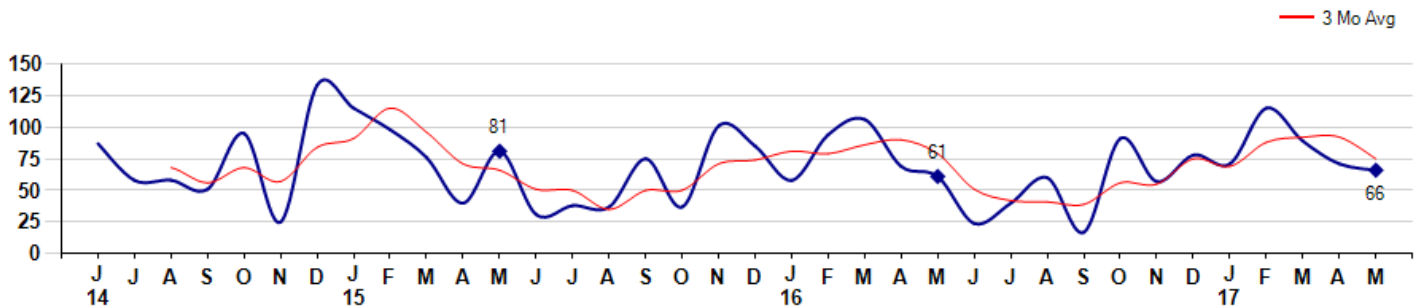
MSI is the # of months needed to sell all of the Inventory at the monthly Sales Pace



Market Time

The average Days On Market(DOM) shows how many days the average Property is on the Market before it sells. An upward trend in DOM tends to indicate a move towards more of a Buyer's market, a downward trend a move towards more of a Seller's market. The DOM for May was 66, down -7.0% from 71 days last month and up 8.2% from 61 days in May of last year. The May 2017 DOM was at a mid range compared with May of 2016 and 2015.

Average Days on Market(Listing to Contract) for properties sold during the month



MLS Area: Lincolnshire



ART WILSON
 Broker, Realtor
 847-363-1599
www.NorthShoreHomesOnline.com
Art.Wilson@cbexchange.com

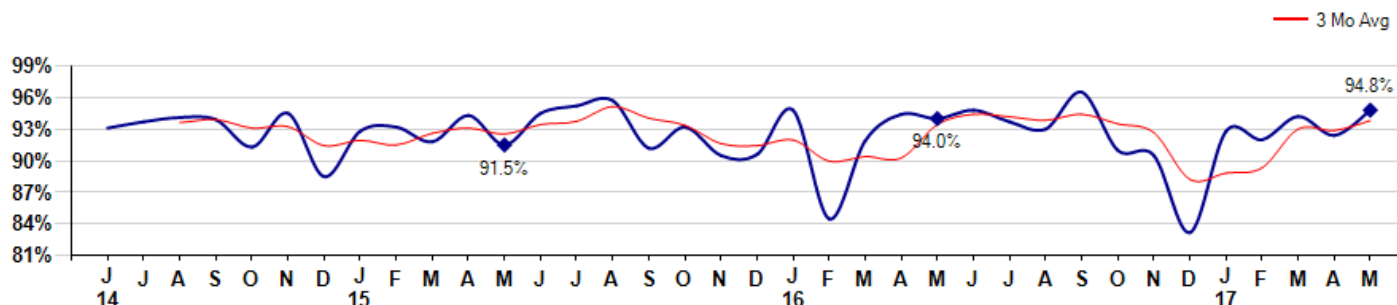


Price Range: 0 to 999999999 | Properties: Single Family Home, Townhome, Condo

Selling Price vs Listing Price

The Selling Price vs Listing Price reveals the average amount that Sellers are agreeing to come down from their list price. The lower the ratio is below 100% the more of a Buyer's market exists, a ratio at or above 100% indicates more of a Seller's market. The May 2017 Selling Price vs List Price of 94.8% was up from 92.4% last month and up from 94.0% in May of last year.

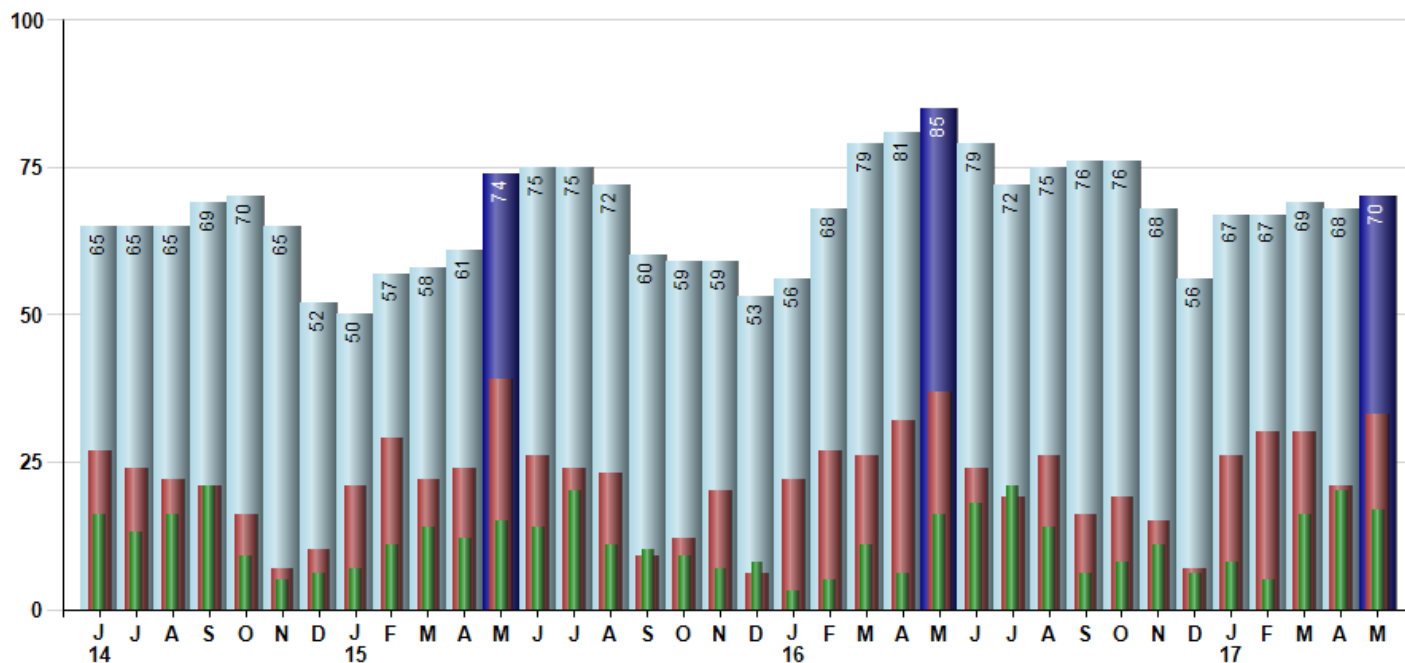
Avg Selling Price divided by Avg Listing Price for sold properties during the month



Inventory / New Listings / Sales

This last view of the market combines monthly inventory of Properties for sale along with New Listings and Sales. The graph shows the basic annual seasonality of the market as well as the relationship between these items. The number of New Listings in May 2017 was 33, up 57.1% from 21 last month and down -10.8% from 37 in May of last year.

Inventory (light blue), New Listings (red), Sold (green)



© 2017 Coldwell Banker Real Estate LLC. All Rights Reserved. Coldwell Banker Residential Brokerage fully supports the principles of the Fair Housing Act and the Equal Opportunity Act. Coldwell Banker Residential Brokerage is operated by a subsidiary of NRT LLC. Coldwell Banker and the Coldwell Banker Logo are registered service marks owned by Coldwell Banker Real Estate LLC.

Based on information from Midwest Real Estate Data LLC for the period 6/1/2014 through 5/31/2017. Due to MLS reporting methods and allowable reporting policy, this data is only informational and may not be completely accurate. Therefore, Coldwell Banker Residential Brokerage does not guarantee the data accuracy. Data maintained by the MLS's may not reflect all real estate activity in the market.



MLS Area: Lincolnshire



ART WILSON
 Broker, Realtor
 847-363-1599
 www.NorthShoreHomesOnline.com
 Art.Wilson@cbexchange.com



Price Range: 0 to 999999999 | Properties: Single Family Home, Townhome, Condo

	J 14	J	A	S	O	N	D	J 15	F	M	A	M	J	J	A	S	O	N	D	J 16	F	M	A	M	J	J	A	S	O	N	D	J 17	F	M	A	M
Homes Sold	16	13	16	21	9	5	6	7	11	14	12	15	14	20	11	10	9	7	8	3	5	11	6	16	18	21	14	6	8	11	6	8	5	16	20	17
3 Mo. Roll Avg			15	17	15	12	7	6	8	11	12	14	14	16	15	14	10	9	8	6	5	6	7	11	13	18	18	14	9	8	8	8	6	10	14	18

(000's)	J 14	J	A	S	O	N	D	J 15	F	M	A	M	J	J	A	S	O	N	D	J 16	F	M	A	M	J	J	A	S	O	N	D	J 17	F	M	A	M
Median Sale Price	458	449	468	460	512	419	443	617	455	410	488	405	599	411	639	393	565	637	483	489	364	390	544	509	604	483	463	443	496	575	366	377	350	464	388	511
3 Mo. Roll Avg			458	459	480	463	458	493	505	494	451	434	497	472	549	481	532	532	562	536	445	414	433	481	552	532	517	463	467	505	479	439	364	397	400	454

	J 14	J	A	S	O	N	D	J 15	F	M	A	M	J	J	A	S	O	N	D	J 16	F	M	A	M	J	J	A	S	O	N	D	J 17	F	M	A	M
Inventory	65	65	65	69	70	65	52	50	57	58	61	74	75	75	72	60	59	59	53	56	68	79	81	85	79	72	75	76	76	68	56	67	67	69	68	70
MSI	4	5	4	3	8	13	9	7	5	4	5	5	5	4	7	6	7	8	7	19	14	7	14	5	4	3	5	13	10	6	9	8	13	4	3	4

	J 14	J	A	S	O	N	D	J 15	F	M	A	M	J	J	A	S	O	N	D	J 16	F	M	A	M	J	J	A	S	O	N	D	J 17	F	M	A	M
Days On Market	87	58	58	51	95	25	133	115	98	76	40	81	31	38	37	75	37	101	85	58	94	106	69	61	24	40	60	17	91	57	78	71	115	89	71	66
3 Mo. Roll Avg			68	56	68	57	84	91	115	96	71	66	51	50	35	50	50	71	74	81	79	86	90	79	51	42	41	39	56	55	75	69	88	92	92	75

	J 14	J	A	S	O	N	D	J 15	F	M	A	M	J	J	A	S	O	N	D	J 16	F	M	A	M	J	J	A	S	O	N	D	J 17	F	M	A	M
Price per Sq Ft	174	162	187	198	186	164	179	185	200	178	197	164	207	174	210	171	215	220	187	213	189	170	202	187	206	187	182	184	171	180	148	183	191	194	185	181
3 Mo. Roll Avg			174	182	190	183	176	176	188	188	192	180	189	182	197	185	199	202	207	207	196	191	187	186	198	193	192	184	179	178	166	170	174	189	190	187

	J 14	J	A	S	O	N	D	J 15	F	M	A	M	J	J	A	S	O	N	D	J 16	F	M	A	M	J	J	A	S	O	N	D	J 17	F	M	A	M
Sale to List Price	0.931	0.937	0.941	0.939	0.913	0.945	0.885	0.928	0.932	0.918	0.943	0.915	0.945	0.952	0.957	0.912	0.932	0.905	0.906	0.948	0.845	0.919	0.944	0.940	0.948	0.937	0.930	0.965	0.910	0.905	0.832	0.928	0.920	0.942	0.924	0.948
3 Mo. Roll Avg			0.936	0.939	0.931	0.932	0.914	0.919	0.915	0.926	0.931	0.925	0.934	0.937	0.951	0.940	0.934	0.916	0.914	0.920	0.900	0.904	0.903	0.934	0.944	0.942	0.938	0.944	0.935	0.927	0.882	0.888	0.893	0.930	0.929	0.938

	J 14	J	A	S	O	N	D	J 15	F	M	A	M	J	J	A	S	O	N	D	J 16	F	M	A	M	J	J	A	S	O	N	D	J 17	F	M	A	M
New Listings	27	24	22	21	16	7	10	21	29	22	24	39	26	24	23	9	12	20	6	22	27	26	32	37	24	19	26	16	19	15	7	26	30	30	21	33
Inventory	65	65	65	69	70	65	52	50	57	58	61	74	75	75	72	60	59	59	53	56	68	79	81	85	79	72	75	76	76	68	56	67	67	69	68	70
Sales	16	13	16	21	9	5	6	7	11	14	12	15	14	20	11	10	9	7	8	3	5	11	6	16	18	21	14	6	8	11	6	8	5	16	20	17

(000's)	J 14	J	A	S	O	N	D	J 15	F	M	A	M	J	J	A	S	O	N	D	J 16	F	M	A	M	J	J	A	S	O	N	D	J 17	F	M	A	M
Avg Sale Price	490	420	490	553	517	425	544	580	592	521	523	433	617	492	703	499	645	713	524	461	358	428	528	552	619	556	479	419	468	551	335	412	442	453	427	503
3 Mo. Roll Avg			467	488	520	498	495	517	572	564	545	492	524	514	604	565	616	619	627	566	448	416	438	503	566	576	551	485	456	480	451	433	396	436	440	461

© 2017 Coldwell Banker Real Estate LLC. All Rights Reserved. Coldwell Banker Residential Brokerage fully supports the principles of the Fair Housing Act and the Equal Opportunity Act. Coldwell Banker Residential Brokerage is operated by a subsidiary of NRT LLC. Coldwell Banker and the Coldwell Banker Logo are registered service marks owned by Coldwell Banker Real Estate LLC.

Based on information from Midwest Real Estate Data LLC for the period 6/1/2014 through 5/31/2017. Due to MLS reporting methods and allowable reporting policy, this data is only informational and may not be completely accurate. Therefore, Coldwell Banker Residential Brokerage does not guarantee the data accuracy. Data maintained by the MLS's may not reflect all real estate activity in the market.

