

MLS Area: Lake Forest



ART WILSON
 Broker, Realtor
 847-363-1599
 www.NorthShoreHomesOnline.com
 Art.Wilson@cbexchange.com



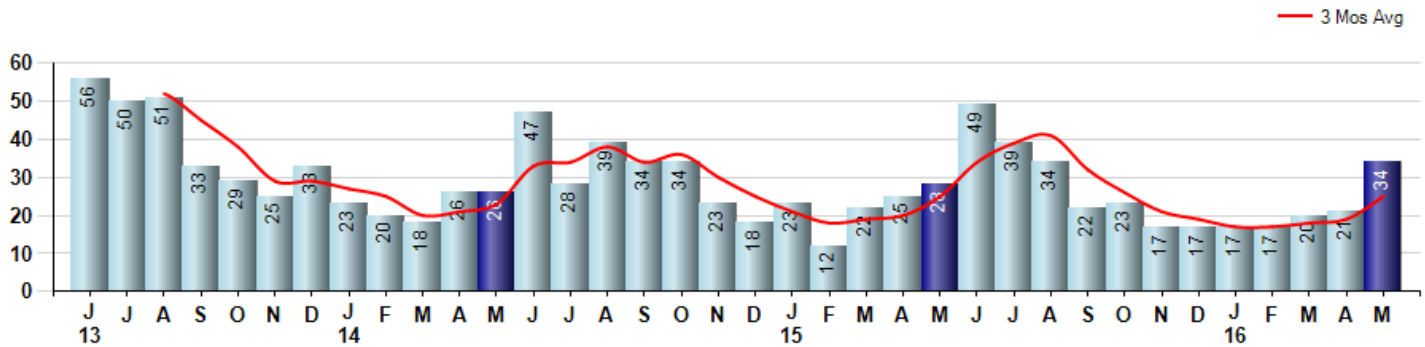
Price Range: \$0 to \$999,999,000 | Properties: Single Family Home, Townhome, Condo

Market Profile & Trends Overview	Month	Trending Versus*:				YTD	Trending Versus*:	
		LM	L3M	PYM	LY		PriorYTD	PriorYear
Median List Price of all Current Listings	\$1,295,000	↑		↑				
Average List Price of all Current Listings	\$1,679,312	↑		↑				
May Median Sales Price	\$712,625	↑	↑	↔	↓	\$715,000	↑	↓
May Average Sales Price	\$782,522	↓	↑	↓	↓	\$815,237	↑	↓
Total Properties Currently for Sale (Inventory)	375	↑		↑				
May Number of Properties Sold	34	↑		↑		109	↔	
May Average Days on Market (Solds)	115	↑	↔	↑	↑	110	↑	↑
May Month's Supply of Inventory	11.0	↓	↓	↓	↓	16.0	↑	↑
May Sale Price vs List Price Ratio	94.0%	↔	↑	↓	↑	93.0%	↓	↑

* LM=Last Month / L3M=Last 3 Months / PYM=Same Month Prior Year / LY=Last Year / YTD = Year-to-date

Property Sales

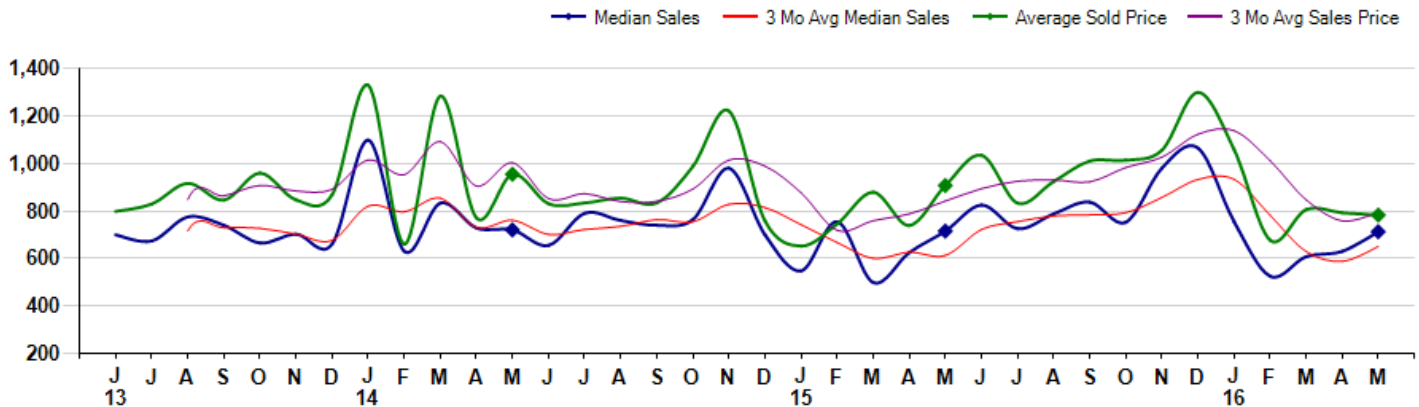
May Property sales were 34, up 21.4% from 28 in May of 2015 and 61.9% higher than the 21 sales last month. May 2016 sales were at their highest level compared to May of 2015 and 2014. May YTD sales of 109 are running -0.9% behind last year's year-to-date sales of 110.



Prices

The Median Sales Price in May was \$712,625, down -0.3% from \$715,000 in May of 2015 and up 13.1% from \$630,000 last month. The Average Sales Price in May was \$782,522, down -13.8% from \$907,296 in May of 2015 and down -1.2% from \$792,401 last month. May 2016 ASP was at the lowest level compared to May of 2015 and 2014.

Median means Middle (the same # of properties sold above and below Median) (000's)



MLS Area: Lake Forest



ART WILSON
 Broker, Realtor
 847-363-1599
 www.NorthShoreHomesOnline.com
 Art.Wilson@cbexchange.com



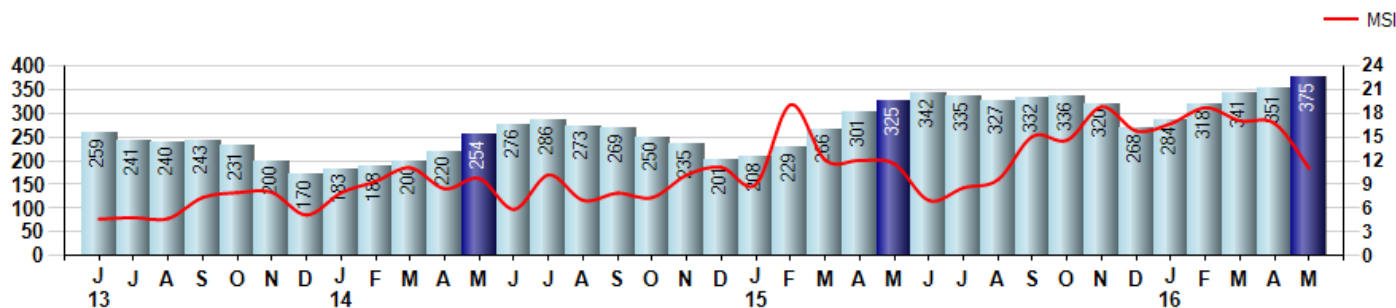
Price Range: \$0 to \$999,999,000 | Properties: Single Family Home, Townhome, Condo

Inventory & MSI

The Total Inventory of Properties available for sale as of May was 375, up 6.8% from 351 last month and up 15.4% from 325 in May of last year. May 2016 Inventory was at highest level compared to May of 2015 and 2014.

A comparatively lower MSI is more beneficial for sellers while a higher MSI is better for buyers. The May 2016 MSI of 11.0 months was at a mid range compared with May of 2015 and 2014.

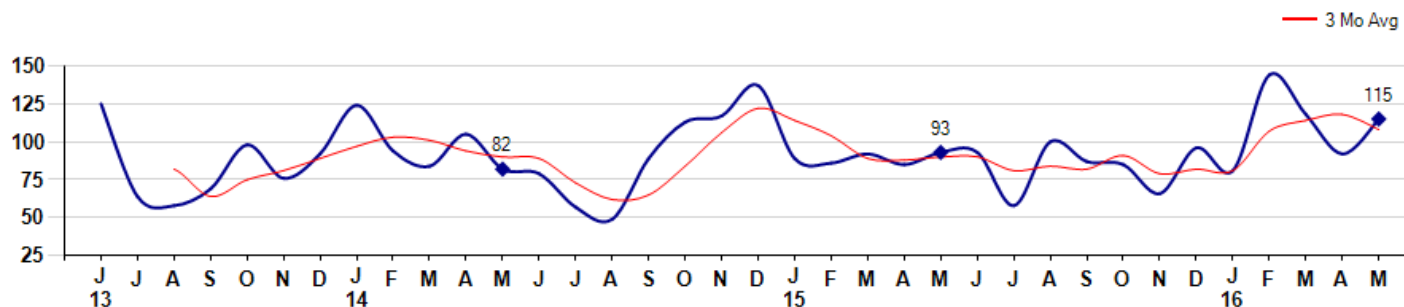
MSI is the # of months needed to sell all of the Inventory at the monthly Sales Pace



Market Time

The average Days On Market(DOM) shows how many days the average Property is on the Market before it sells. An upward trend in DOM tends to indicate a move towards more of a Buyer's market, a downward trend a move towards more of a Seller's market. The DOM for May was 115, up 25.0% from 92 days last month and up 23.7% from 93 days in May of last year. The May 2016 DOM was at its highest level compared with May of 2015 and 2014.

Average Days on Market(Listing to Contract) for properties sold during the month



MLS Area: Lake Forest



ART WILSON

Broker, Realtor

847-363-1599

www.NorthShoreHomesOnline.com

Art.Wilson@cbexchange.com

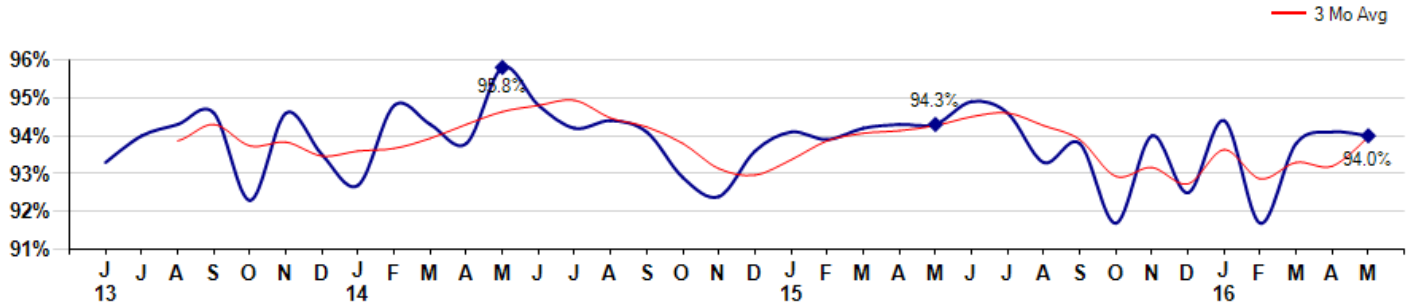


Price Range: \$0 to \$999,999,000 | Properties: Single Family Home, Townhome, Condo

Selling Price vs Listing Price

The Selling Price vs Listing Price reveals the average amount that Sellers are agreeing to come down from their list price. The lower the ratio is below 100% the more of a Buyer's market exists, a ratio at or above 100% indicates more of a Seller's market. The May 2016 Selling Price vs List Price of 94.0% was down from 94.1% last month and down from 94.3% in May of last year.

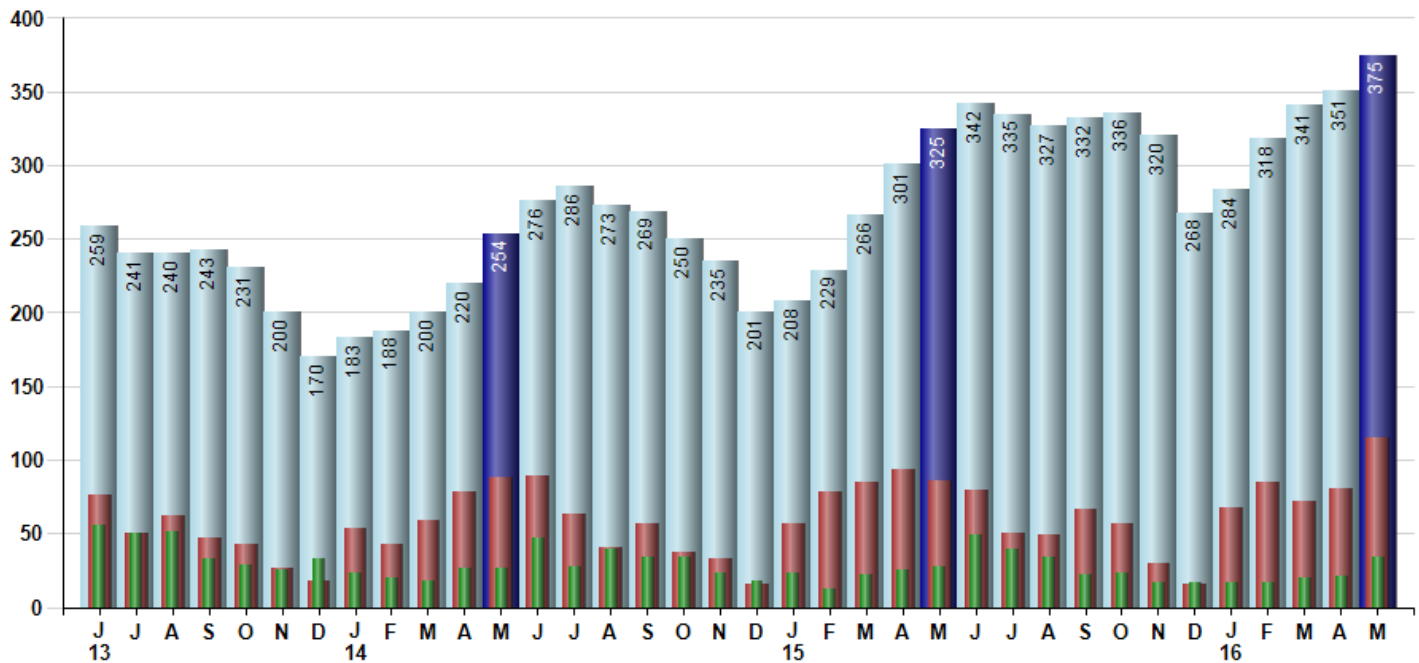
Avg Selling Price divided by Avg Listing Price for sold properties during the month



Inventory / New Listings / Sales

This last view of the market combines monthly inventory of Properties for sale along with New Listings and Sales. The graph shows the basic annual seasonality of the market as well as the relationship between these items. The number of New Listings in May 2016 was 115, up 42.0% from 81 last month and up 33.7% from 86 in May of last year.

Inventory (light blue), New Listings (red), Sold (green)



© 2016 Coldwell Banker Real Estate LLC. All Rights Reserved. Coldwell Banker Residential Brokerage fully supports the principles of the Fair Housing Act and the Equal Opportunity Act. Coldwell Banker Residential Brokerage is operated by a subsidiary of NRT LLC. Coldwell Banker and the Coldwell Banker Logo are registered service marks owned by Coldwell Banker Real Estate LLC.

Based on information from Midwest Real Estate Data LLC for the period 6/1/2013 through 5/31/2016. Due to MLS reporting methods and allowable reporting policy, this data is only informational and may not be completely accurate. Therefore, Coldwell Banker Residential Brokerage does not guarantee the data accuracy. Data maintained by the MLS's may not reflect all real estate activity in the market.



MLS Area: Lake Forest



ART WILSON

Broker, Realtor

847-363-1599

www.NorthShoreHomesOnline.com

Art.Wilson@cbexchange.com



Price Range: \$0 to \$999,999,000 | Properties: Single Family Home, Townhome, Condo

	J 13	J	A	S	O	N	D	J 14	F	M	A	M	J	J	A	S	O	N	D	J 15	F	M	A	M	J	J	A	S	O	N	D	J 16	F	M	A	M
Homes Sold	56	50	51	33	29	25	33	23	20	18	26	26	47	28	39	34	34	23	18	23	12	22	25	28	49	39	34	22	23	17	17	17	17	20	21	34
3 Mo. Roll Avg			52	45	38	29	29	27	25	20	21	23	33	34	38	34	36	30	25	21	18	19	20	25	34	39	41	32	26	21	19	17	17	18	19	25

(000's)	J 13	J	A	S	O	N	D	J 14	F	M	A	M	J	J	A	S	O	N	D	J 15	F	M	A	M	J	J	A	S	O	N	D	J 16	F	M	A	M
Median Sale Price	700	674	775	740	665	703	660	1,099	630	833	729	720	655	790	760	740	764	980	699	548	755	499	625	715	825	725	788	838	753	980	1,065	755	525	608	630	713
3 Mo. Roll Avg			716	730	727	703	676	821	796	854	731	761	701	722	735	763	755	828	814	742	667	600	626	613	722	755	779	783	793	857	933	933	782	629	588	650

	J 13	J	A	S	O	N	D	J 14	F	M	A	M	J	J	A	S	O	N	D	J 15	F	M	A	M	J	J	A	S	O	N	D	J 16	F	M	A	M
Inventory	259	241	240	243	231	200	170	183	188	200	220	254	276	286	273	269	250	235	201	208	229	266	301	325	342	335	327	332	336	320	268	284	318	341	351	375
MSI	5	5	5	7	8	8	5	8	9	11	8	10	6	10	7	8	7	10	11	9	19	12	12	12	7	9	10	15	15	19	16	17	19	17	17	11

	J 13	J	A	S	O	N	D	J 14	F	M	A	M	J	J	A	S	O	N	D	J 15	F	M	A	M	J	J	A	S	O	N	D	J 16	F	M	A	M
Days On Market	125	64	58	69	98	76	92	124	94	84	105	82	79	57	49	89	113	117	137	89	86	92	85	93	93	58	100	87	85	66	96	81	144	118	92	115
3 Mo. Roll Avg			82	64	75	81	89	97	103	101	94	90	89	73	62	65	84	106	122	114	104	89	88	90	90	81	84	82	91	79	82	81	107	114	118	108

	J 13	J	A	S	O	N	D	J 14	F	M	A	M	J	J	A	S	O	N	D	J 15	F	M	A	M	J	J	A	S	O	N	D	J 16	F	M	A	M
Price per Sq Ft	241	247	258	247	267	241	262	288	229	285	241	288	256	258	262	275	272	275	266	223	228	242	242	273	278	265	251	246	274	275	292	287	236	270	240	241
3 Mo. Roll Avg			249	251	257	252	257	264	260	267	252	271	262	267	259	265	270	274	271	255	239	231	237	252	264	272	265	254	257	265	280	285	272	264	249	250

	J 13	J	A	S	O	N	D	J 14	F	M	A	M	J	J	A	S	O	N	D	J 15	F	M	A	M	J	J	A	S	O	N	D	J 16	F	M	A	M
Sale to List Price	0.933	0.940	0.943	0.946	0.923	0.946	0.935	0.927	0.948	0.943	0.938	0.958	0.948	0.942	0.944	0.941	0.929	0.924	0.936	0.941	0.939	0.942	0.943	0.943	0.949	0.946	0.933	0.938	0.917	0.940	0.925	0.944	0.917	0.938	0.941	0.940
3 Mo. Roll Avg			0.939	0.943	0.937	0.938	0.935	0.936	0.937	0.939	0.943	0.946	0.948	0.949	0.945	0.942	0.938	0.931	0.930	0.934	0.939	0.941	0.941	0.943	0.945	0.946	0.943	0.939	0.929	0.932	0.927	0.936	0.929	0.933	0.932	0.940

	J 13	J	A	S	O	N	D	J 14	F	M	A	M	J	J	A	S	O	N	D	J 15	F	M	A	M	J	J	A	S	O	N	D	J 16	F	M	A	M
New Listings	76	50	62	47	43	27	18	53	43	59	78	88	89	63	40	57	37	33	16	57	78	85	93	86	79	50	49	67	57	30	16	68	85	72	81	115
Inventory	259	241	240	243	231	200	170	183	188	200	220	254	276	286	273	269	250	235	201	208	229	266	301	325	342	335	327	332	336	320	268	284	318	341	351	375
Sales	56	50	51	33	29	25	33	23	20	18	26	26	47	28	39	34	34	23	18	23	12	22	25	28	49	39	34	22	23	17	17	17	20	21	34	

(000's)	J 13	J	A	S	O	N	D	J 14	F	M	A	M	J	J	A	S	O	N	D	J 15	F	M	A	M	J	J	A	S	O	N	D	J 16	F	M	A	M
Avg Sale Price	798	829	917	846	959	847	868	1,330	660	1,284	771	954	830	834	854	834	988	1,221	757	652	745	879	739	907	1,035	833	924	1,010	1,014	1,056	1,300	1,059	677	806	792	783
3 Mo. Roll Avg			848	864	907	884	891	1,015	953	1,091	905	1,003	852	873	839	841	892	1,014	989	877	718	759	788	842	894	925	931	922	983	1,026	1,123	1,138	1,012	847	758	793

© 2016 Coldwell Banker Real Estate LLC. All Rights Reserved. Coldwell Banker Residential Brokerage fully supports the principles of the Fair Housing Act and the Equal Opportunity Act. Coldwell Banker Residential Brokerage is operated by a subsidiary of NRT LLC. Coldwell Banker and the Coldwell Banker Logo are registered service marks owned by Coldwell Banker Real Estate LLC.

Based on information from Midwest Real Estate Data LLC for the period 6/1/2013 through 5/31/2016. Due to MLS reporting methods and allowable reporting policy, this data is only informational and may not be completely accurate. Therefore, Coldwell Banker Residential Brokerage does not guarantee the data accuracy. Data maintained by the MLS's may not reflect all real estate activity in the market.

