

MLS Area: Lake Bluff



ART WILSON
 Broker, Realtor
 847-363-1599
 www.NorthShoreHomesOnline.com
 Art.Wilson@cbexchange.com



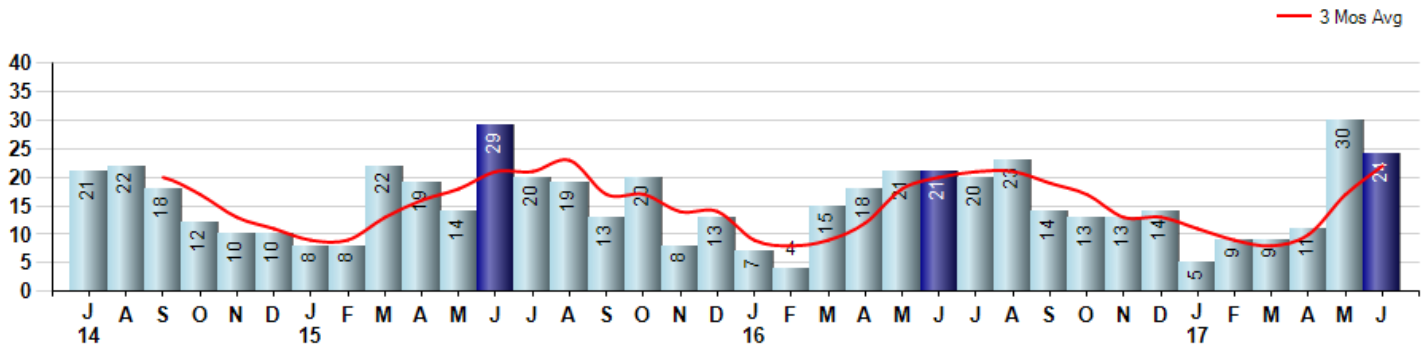
Price Range: 0 to 999999999 | Properties: Single Family Home, Townhome, Condo

Market Profile & Trends Overview	Month	Trending Versus*:				YTD	Trending Versus*:	
		LM	L3M	PYM	LY		PriorYTD	PriorYear
Median List Price of all Current Listings	\$699,000	↔		↑				
Average List Price of all Current Listings	\$920,257	↓		↔				
June Median Sales Price	\$676,500	↑	↑	↑	↑	\$453,000	↓	↓
June Average Sales Price	\$626,813	↑	↑	↑	↑	\$555,327	↓	↓
Total Properties Currently for Sale (Inventory)	81	↑		↓				
June Number of Properties Sold	24	↓		↑		88	↑	
June Average Days on Market (Solds)	63	↓	↓	↓	↓	83	↓	↑
June Month's Supply of Inventory	3.4	↑	↓	↓	↓	8.1	↓	↑
June Sale Price vs List Price Ratio	94.7%	↑	↑	↑	↑	92.2%	↑	↑

* LM=Last Month / L3M=Last 3 Months / PYM=Same Month Prior Year / LY=Last Year / YTD = Year-to-date

Property Sales

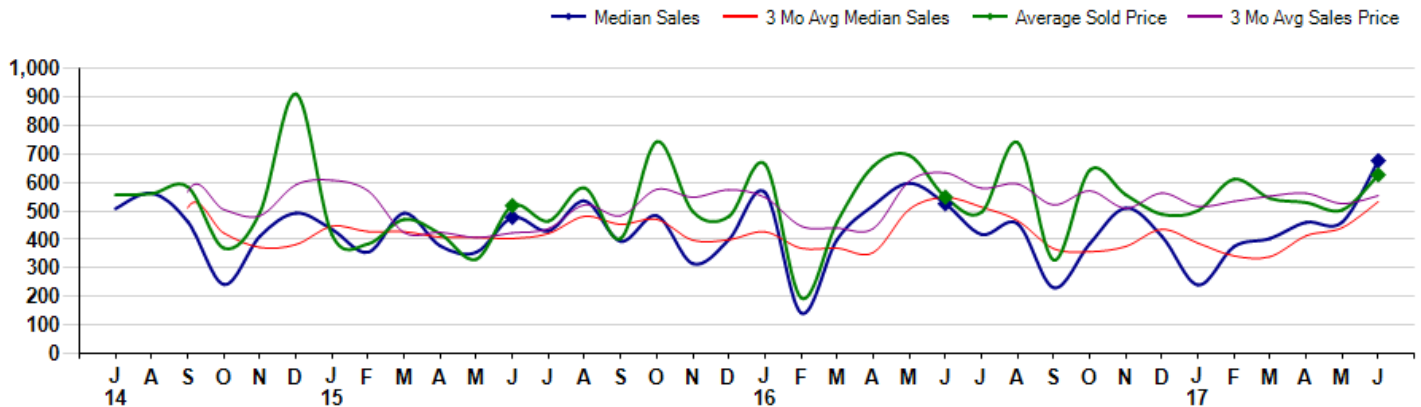
June Property sales were 24, up 14.3% from 21 in June of 2016 and -20.0% lower than the 30 sales last month. June 2017 sales were at a mid level compared to June of 2016 and 2015. June YTD sales of 88 are running 2.3% ahead of last year's year-to-date sales of 86.



Prices

The Median Sales Price in June was \$676,500, up 28.9% from \$525,000 in June of 2016 and up 46.9% from \$460,500 last month. The Average Sales Price in June was \$626,813, up 14.3% from \$548,571 in June of 2016 and up 24.5% from \$503,270 last month. June 2017 ASP was at highest level compared to June of 2016 and 2015.

Median means Middle (the same # of properties sold above and below Median) (000's)



MLS Area: Lake Bluff



ART WILSON
 Broker, Realtor
 847-363-1599
 www.NorthShoreHomesOnline.com
 Art.Wilson@cbexchange.com



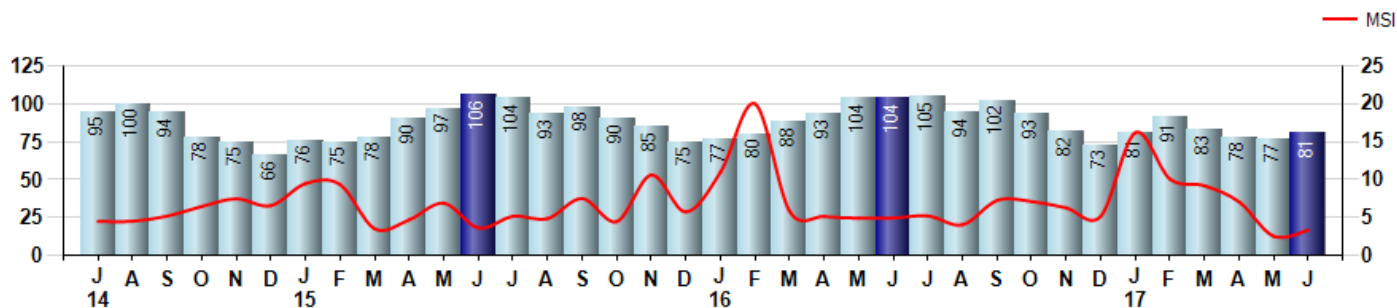
Price Range: 0 to 999999999 | Properties: Single Family Home, Townhome, Condo

Inventory & MSI

The Total Inventory of Properties available for sale as of June was 81, up 5.2% from 77 last month and down -22.1% from 104 in June of last year. June 2017 Inventory was at the lowest level compared to June of 2016 and 2015.

A comparatively lower MSI is more beneficial for sellers while a higher MSI is better for buyers. The June 2017 MSI of 3.4 months was at its lowest level compared with June of 2016 and 2015.

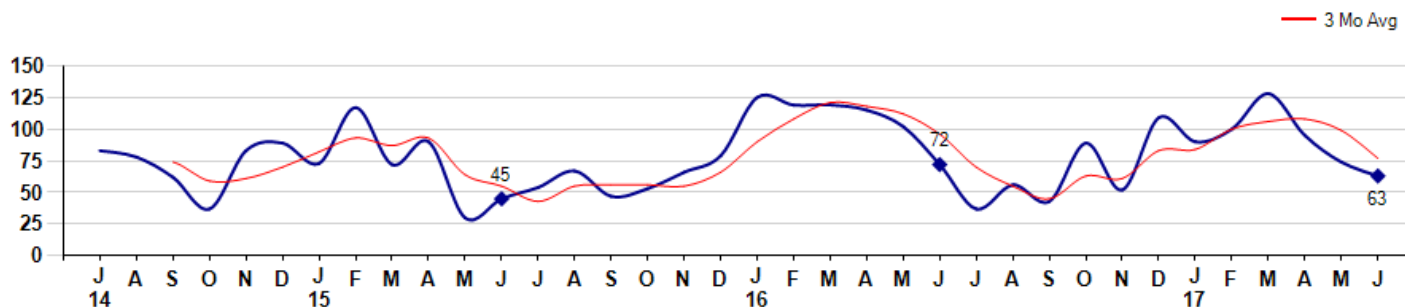
MSI is the # of months needed to sell all of the Inventory at the monthly Sales Pace



Market Time

The average Days On Market(DOM) shows how many days the average Property is on the Market before it sells. An upward trend in DOM tends to indicate a move towards more of a Buyer's market, a downward trend a move towards more of a Seller's market. The DOM for June was 63, down -14.9% from 74 days last month and down -12.5% from 72 days in June of last year. The June 2017 DOM was at a mid range compared with June of 2016 and 2015.

Average Days on Market(Listing to Contract) for properties sold during the month



MLS Area: Lake Bluff



ART WILSON
 Broker, Realtor
 847-363-1599
 www.NorthShoreHomesOnline.com
 Art.Wilson@cbexchange.com

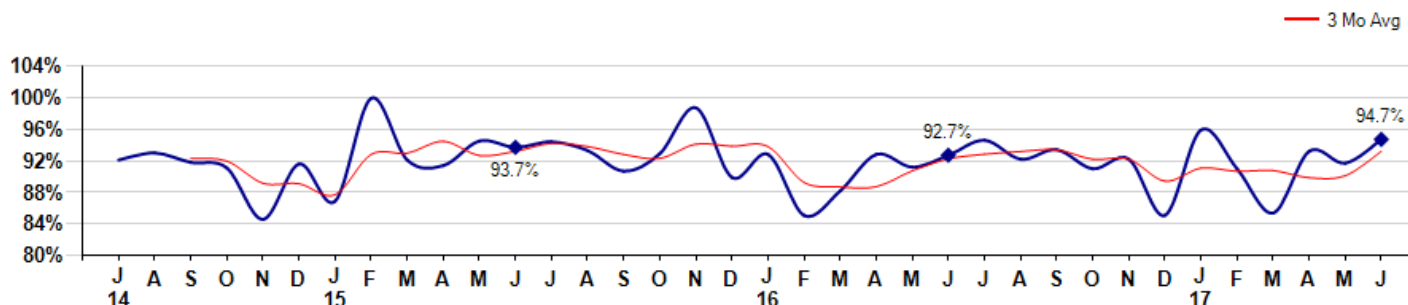


Price Range: 0 to 999999999 | Properties: Single Family Home, Townhome, Condo

Selling Price vs Listing Price

The Selling Price vs Listing Price reveals the average amount that Sellers are agreeing to come down from their list price. The lower the ratio is below 100% the more of a Buyer's market exists, a ratio at or above 100% indicates more of a Seller's market. The June 2017 Selling Price vs List Price of 94.7% was up from 91.7% last month and up from 92.7% in June of last year.

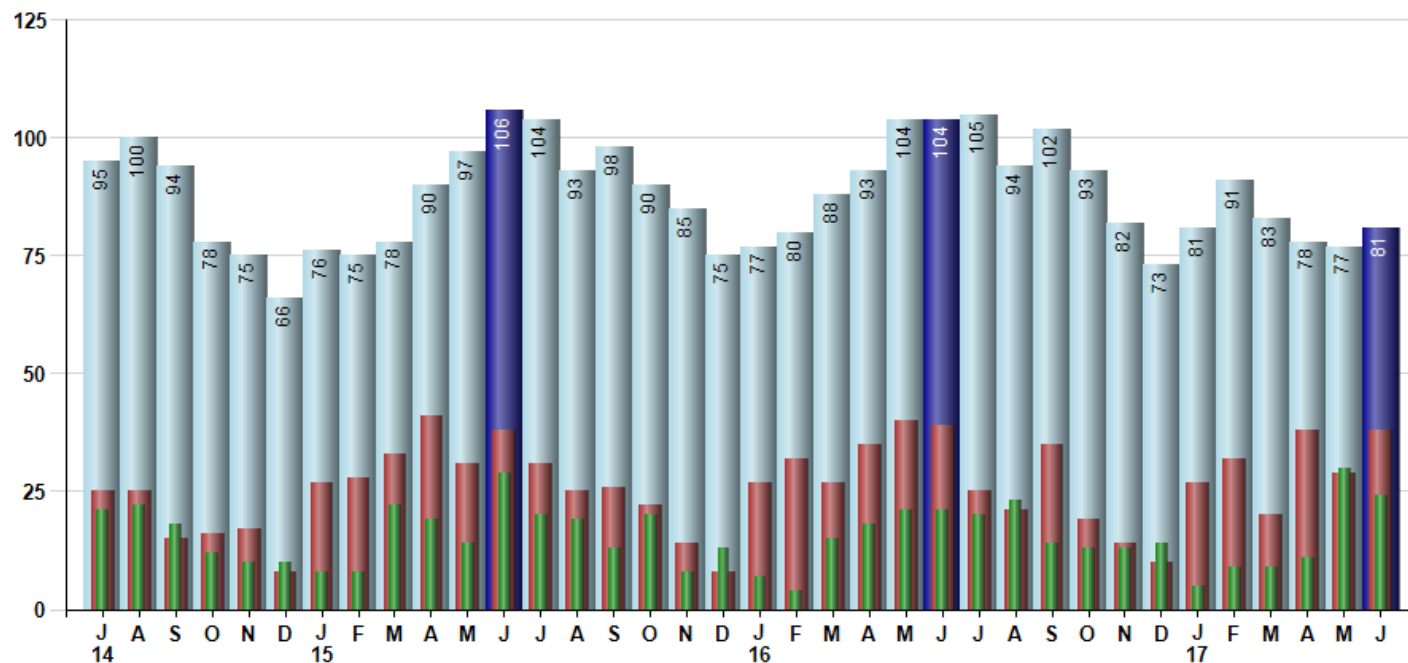
Avg Selling Price divided by Avg Listing Price for sold properties during the month



Inventory / New Listings / Sales

This last view of the market combines monthly inventory of Properties for sale along with New Listings and Sales. The graph shows the basic annual seasonality of the market as well as the relationship between these items. The number of New Listings in June 2017 was 38, up 31.0% from 29 last month and down -2.6% from 39 in June of last year.

Inventory (light blue), New Listings (red), Sold (green)



© 2017 Coldwell Banker Residential Brokerage. All Rights Reserved. Coldwell Banker Residential Brokerage fully supports the principles of the Fair Housing Act and the Equal Opportunity Act. Coldwell Banker Residential Brokerage is operated by a subsidiary of NRT LLC. Coldwell Banker and the Coldwell Banker Logo are registered service marks owned by Coldwell Banker Real Estate LLC.

Based on information from Midwest Real Estate Data LLC for the period 7/1/2014 through 6/30/2017. Due to MLS reporting methods and allowable reporting policy, this data is only informational and may not be completely accurate. Therefore, Coldwell Banker Residential Brokerage does not guarantee the data accuracy. Data maintained by the MLS's may not reflect all real estate activity in the market.



MARKET ACTION REPORT

June 2017

MLS Area: Lake Bluff



ART WILSON
 Broker, Realtor
 847-363-1599
 www.NorthShoreHomesOnline.com
 Art.Wilson@cbexchange.com



Price Range: 0 to 999999999 | Properties: Single Family Home, Townhome, Condo

	J 14	A	S	O	N	D	J 15	F	M	A	M	J	J	A	S	O	N	D	J 16	F	M	A	M	J	J	A	S	O	N	D	J 17	F	M	A	M	J
Homes Sold	21	22	18	12	10	10	8	8	22	19	14	29	20	19	13	20	8	13	7	4	15	18	21	21	20	23	14	13	13	14	5	9	9	11	30	24
3 Mo. Roll Avg			20	17	13	11	9	9	13	16	18	21	21	23	17	17	14	14	9	8	9	12	18	20	21	21	19	17	13	13	11	9	8	10	17	22

	(000's) J 14	A	S	O	N	D	J 15	F	M	A	M	J	J	A	S	O	N	D	J 16	F	M	A	M	J	J	A	S	O	N	D	J 17	F	M	A	M	J
Median Sale Price	508	562	463	242	411	493	435	355	492	377	355	478	430	535	394	483	315	400	565	142	400	519	598	525	418	455	231	385	510	411	240	375	403	460	461	677
3 Mo. Roll Avg			511	422	372	382	446	428	427	408	408	403	421	481	453	471	397	399	427	369	369	354	506	547	513	466	368	357	375	435	387	342	339	413	441	532

	J 14	A	S	O	N	D	J 15	F	M	A	M	J	J	A	S	O	N	D	J 16	F	M	A	M	J	J	A	S	O	N	D	J 17	F	M	A	M	J
Inventory	95	100	94	78	75	66	76	75	78	90	97	106	104	93	98	90	85	75	77	80	88	93	104	104	105	94	102	93	82	73	81	91	83	78	77	81
MSI	5	5	5	7	8	7	10	9	4	5	7	4	5	5	8	5	11	6	11	20	6	5	5	5	5	4	7	7	6	5	16	10	9	7	3	3

	J 14	A	S	O	N	D	J 15	F	M	A	M	J	J	A	S	O	N	D	J 16	F	M	A	M	J	J	A	S	O	N	D	J 17	F	M	A	M	J
Days On Market	83	78	62	37	83	89	73	117	72	90	30	45	54	67	47	53	66	79	125	119	119	115	102	72	37	56	43	89	52	109	90	100	128	95	74	63
3 Mo. Roll Avg			74	59	61	70	82	93	87	93	64	55	43	55	56	56	55	66	90	108	121	118	112	96	70	55	45	63	61	83	84	100	106	108	99	77

	J 14	A	S	O	N	D	J 15	F	M	A	M	J	J	A	S	O	N	D	J 16	F	M	A	M	J	J	A	S	O	N	D	J 17	F	M	A	M	J
Price per Sq Ft	193	230	231	171	192	247	188	172	221	200	181	219	206	252	179	253	205	213	257	117	185	239	236	223	209	243	172	241	245	203	210	218	212	216	205	254
3 Mo. Roll Avg			218	211	198	203	209	202	194	198	201	200	202	226	212	228	212	224	225	196	186	180	220	233	223	225	208	219	219	230	219	210	213	215	211	225

	J 14	A	S	O	N	D	J 15	F	M	A	M	J	J	A	S	O	N	D	J 16	F	M	A	M	J	J	A	S	O	N	D	J 17	F	M	A	M	J
Sale to List Price	0.921	0.930	0.918	0.911	0.846	0.916	0.869	0.999	0.921	0.914	0.945	0.937	0.944	0.933	0.907	0.929	0.987	0.899	0.928	0.851	0.882	0.928	0.912	0.927	0.946	0.922	0.934	0.910	0.922	0.851	0.959	0.910	0.854	0.932	0.917	0.947
3 Mo. Roll Avg			0.923	0.920	0.892	0.891	0.877	0.928	0.930	0.945	0.927	0.932	0.942	0.938	0.928	0.923	0.941	0.938	0.938	0.893	0.887	0.887	0.907	0.922	0.928	0.932	0.934	0.922	0.922	0.894	0.911	0.907	0.908	0.899	0.901	0.932

	J 14	A	S	O	N	D	J 15	F	M	A	M	J	J	A	S	O	N	D	J 16	F	M	A	M	J	J	A	S	O	N	D	J 17	F	M	A	M	J
New Listings	25	25	15	16	17	8	27	28	33	41	31	38	31	25	26	22	14	8	27	32	27	35	40	39	25	21	35	19	14	10	27	32	20	38	29	38
Inventory	95	100	94	78	75	66	76	75	78	90	97	106	104	93	98	90	85	75	77	80	88	93	104	104	105	94	102	93	82	73	81	91	83	78	77	81
Sales	21	22	18	12	10	10	8	8	22	19	14	29	20	19	13	20	8	13	7	4	15	18	21	21	20	23	14	13	13	14	5	9	9	11	30	24

	(000's) J 14	A	S	O	N	D	J 15	F	M	A	M	J	J	A	S	O	N	D	J 16	F	M	A	M	J	J	A	S	O	N	D	J 17	F	M	A	M	J
Avg Sale Price	556	561	584	369	495	911	416	385	470	420	331	519	464	581	403	743	498	481	664	195	461	657	695	549	495	740	328	643	557	488	501	612	544	530	503	627
3 Mo. Roll Avg			567	505	483	592	608	571	424	425	407	423	438	521	483	576	548	574	547	447	440	438	604	634	580	595	521	570	509	563	515	534	552	562	526	553

© 2017 Coldwell Banker Residential Brokerage. All Rights Reserved. Coldwell Banker Residential Brokerage fully supports the principles of the Fair Housing Act and the Equal Opportunity Act. Coldwell Banker Residential Brokerage is operated by a subsidiary of NRT LLC. Coldwell Banker and the Coldwell Banker Logo are registered service marks owned by Coldwell Banker Real Estate LLC.

Based on information from Midwest Real Estate Data LLC for the period 7/1/2014 through 6/30/2017. Due to MLS reporting methods and allowable reporting policy, this data is only informational and may not be completely accurate. Therefore, Coldwell Banker Residential Brokerage does not guarantee the data accuracy. Data maintained by the MLS's may not reflect all real estate activity in the market.

