

MLS Area: Glenview / Golf



ART WILSON

Broker, Realtor

847-363-1599

www.NorthShoreHomesOnline.com

Art.Wilson@cbexchange.com



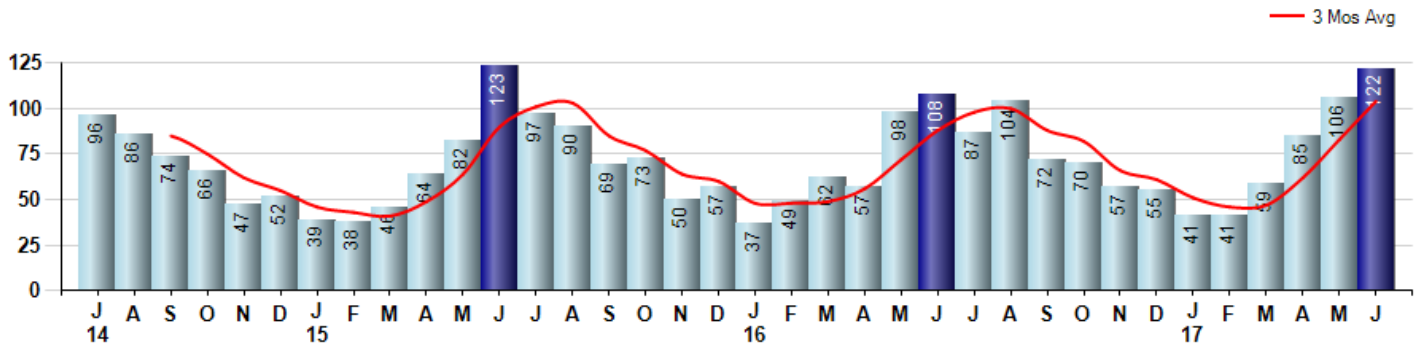
Price Range: 0 to 999999999 | Properties: Single Family Home, Townhome, Condo

Market Profile & Trends Overview	Month	Trending Versus*:				YTD	Trending Versus*:	
		LM	L3M	PYM	LY		PriorYTD	PriorYear
Median List Price of all Current Listings	\$614,957	↔		↓				
Average List Price of all Current Listings	\$747,435	↔		↔				
June Median Sales Price	\$455,000	↑	↑	↔	↑	\$440,625	↑	↔
June Average Sales Price	\$543,489	↑	↑	↑	↑	\$527,181	↑	↑
Total Properties Currently for Sale (Inventory)	346	↓		↓				
June Number of Properties Sold	122	↑		↑		454	↑	
June Average Days on Market (Solds)	46	↓	↓	↑	↓	56	↑	↑
June Month's Supply of Inventory	2.8	↓	↓	↓	↓	5.4	↑	↑
June Sale Price vs List Price Ratio	95.7%	↑	↑	↑	↑	95.1%	↑	↑

* LM=Last Month / L3M=Last 3 Months / PYM=Same Month Prior Year / LY=Last Year / YTD = Year-to-date

Property Sales

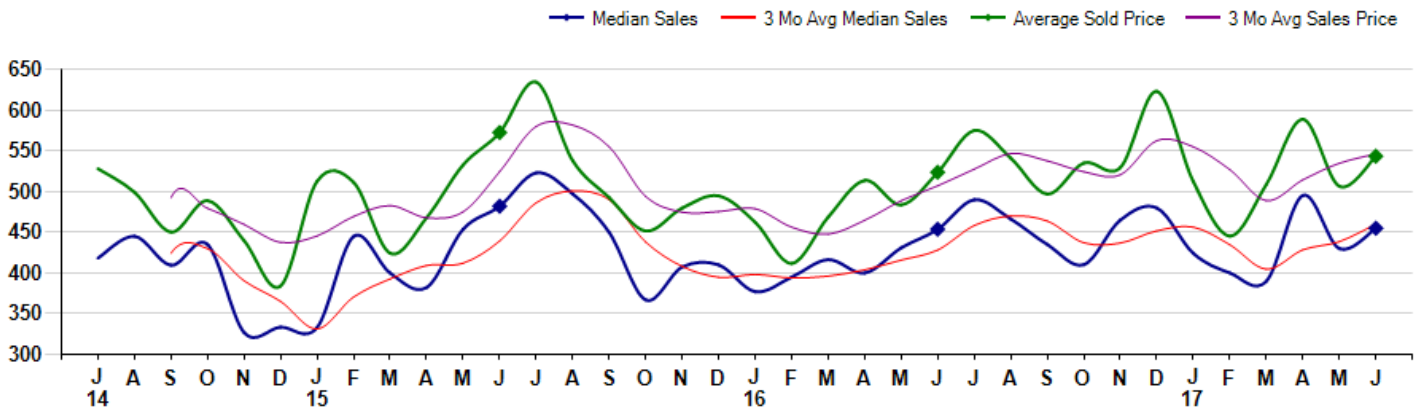
June Property sales were 122, up 13.0% from 108 in June of 2016 and 15.1% higher than the 106 sales last month. June 2017 sales were at a mid level compared to June of 2016 and 2015. June YTD sales of 454 are running 10.5% ahead of last year's year-to-date sales of 411.



Prices

The Median Sales Price in June was \$455,000, up 0.3% from \$453,750 in June of 2016 and up 5.8% from \$430,000 last month. The Average Sales Price in June was \$543,489, up 3.8% from \$523,718 in June of 2016 and up 7.3% from \$506,491 last month. June 2017 ASP was at a mid range compared to June of 2016 and 2015.

Median means Middle (the same # of properties sold above and below Median) (000's)



MLS Area: Glenview / Golf



ART WILSON
 Broker, Realtor
 847-363-1599
 www.NorthShoreHomesOnline.com
 Art.Wilson@cbexchange.com



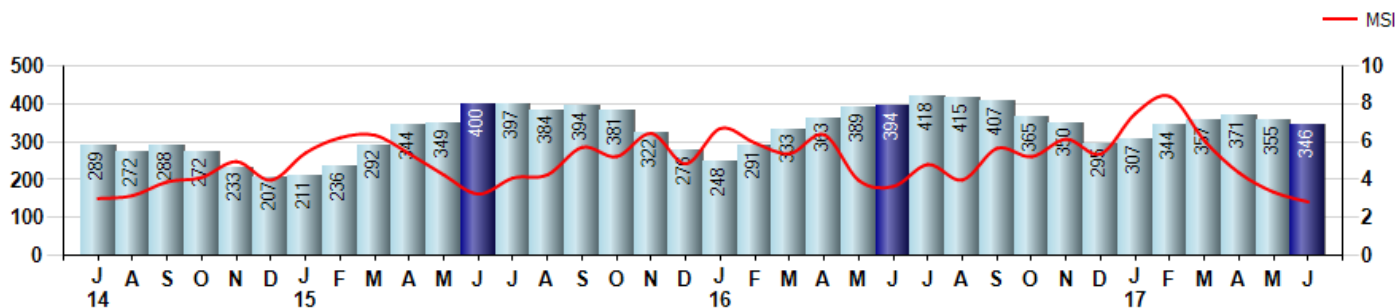
Price Range: 0 to 999999999 | Properties: Single Family Home, Townhome, Condo

Inventory & MSI

The Total Inventory of Properties available for sale as of June was 346, down -2.5% from 355 last month and down -12.2% from 394 in June of last year. June 2017 Inventory was at the lowest level compared to June of 2016 and 2015.

A comparatively lower MSI is more beneficial for sellers while a higher MSI is better for buyers. The June 2017 MSI of 2.8 months was at its lowest level compared with June of 2016 and 2015.

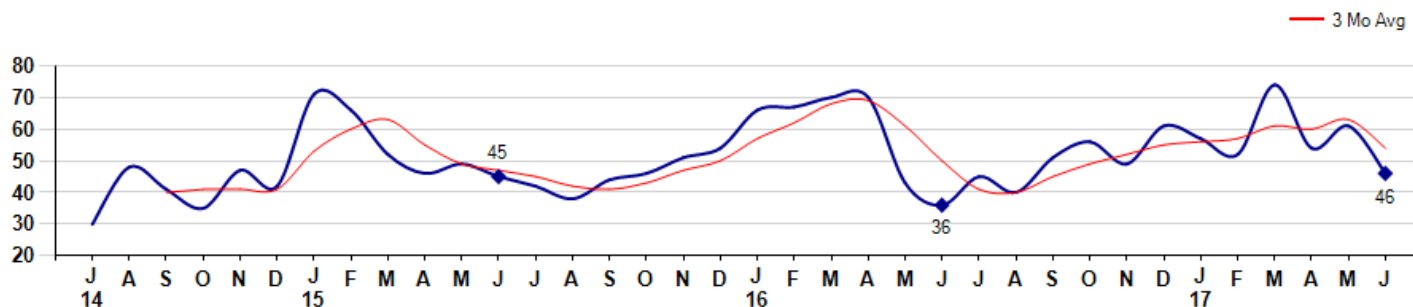
MSI is the # of months needed to sell all of the Inventory at the monthly Sales Pace



Market Time

The average Days On Market(DOM) shows how many days the average Property is on the Market before it sells. An upward trend in DOM tends to indicate a move towards more of a Buyer's market, a downward trend a move towards more of a Seller's market. The DOM for June was 46, down -24.6% from 61 days last month and up 27.8% from 36 days in June of last year. The June 2017 DOM was at its highest level compared with June of 2016 and 2015.

Average Days on Market(Listing to Contract) for properties sold during the month



MLS Area: Glenview / Golf



ART WILSON
 Broker, Realtor
 847-363-1599
www.NorthShoreHomesOnline.com
Art.Wilson@cbexchange.com

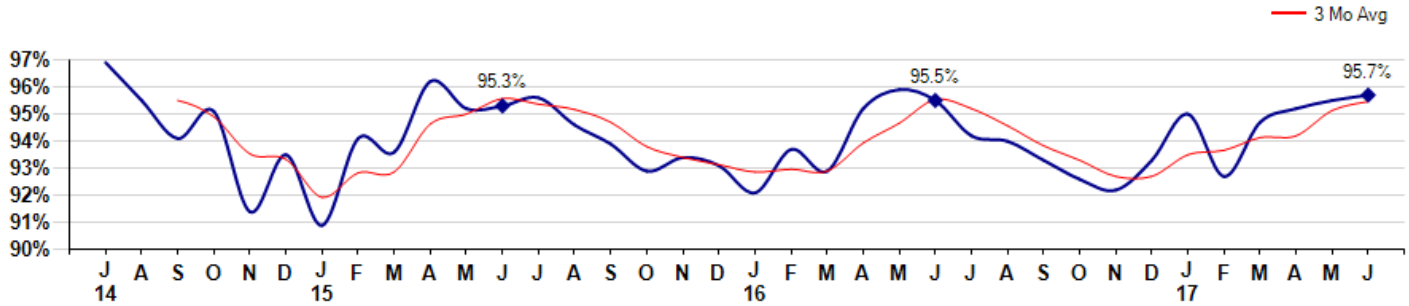


Price Range: 0 to 999999999 | Properties: Single Family Home, Townhome, Condo

Selling Price vs Listing Price

The Selling Price vs Listing Price reveals the average amount that Sellers are agreeing to come down from their list price. The lower the ratio is below 100% the more of a Buyer's market exists, a ratio at or above 100% indicates more of a Seller's market. The June 2017 Selling Price vs List Price of 95.7% was up from 95.5% last month and up from 95.5% in June of last year.

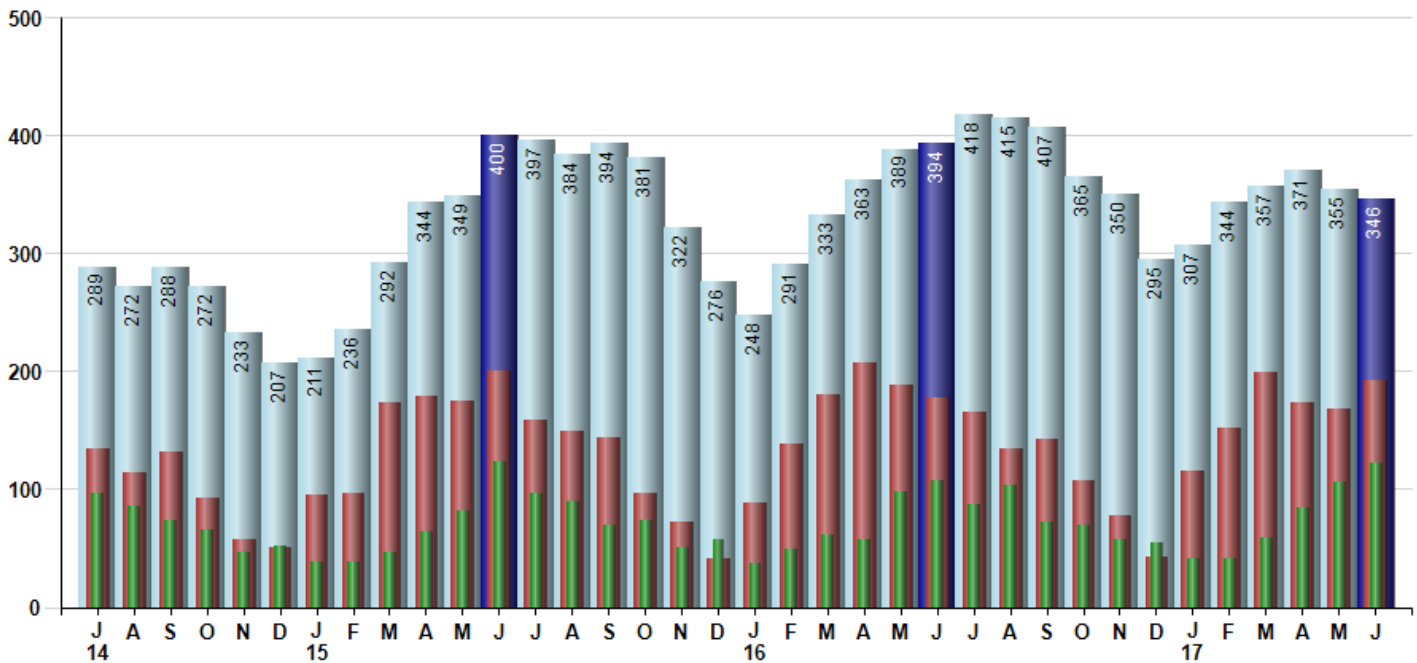
Avg Selling Price divided by Avg Listing Price for sold properties during the month



Inventory / New Listings / Sales

This last view of the market combines monthly inventory of Properties for sale along with New Listings and Sales. The graph shows the basic annual seasonality of the market as well as the relationship between these items. The number of New Listings in June 2017 was 192, up 14.3% from 168 last month and up 7.9% from 178 in June of last year.

Inventory (light blue), New Listings (red), Sold (green)



© 2017 Coldwell Banker Residential Brokerage. All Rights Reserved. Coldwell Banker Residential Brokerage fully supports the principles of the Fair Housing Act and the Equal Opportunity Act. Coldwell Banker Residential Brokerage is operated by a subsidiary of NRT LLC. Coldwell Banker and the Coldwell Banker Logo are registered service marks owned by Coldwell Banker Real Estate LLC.

Based on information from Midwest Real Estate Data LLC for the period 7/1/2014 through 6/30/2017. Due to MLS reporting methods and allowable reporting policy, this data is only informational and may not be completely accurate. Therefore, Coldwell Banker Residential Brokerage does not guarantee the data accuracy. Data maintained by the MLS's may not reflect all real estate activity in the market.



MARKET ACTION REPORT

June 2017

MLS Area: Glenview / Golf



ART WILSON
 Broker, Realtor
 847-363-1599
 www.NorthShoreHomesOnline.com
 Art.Wilson@cbexchange.com



Price Range: 0 to 999999999 | Properties: Single Family Home, Townhome, Condo

	J 14	A	S	O	N	D	J 15	F	M	A	M	J	J	A	S	O	N	D	J 16	F	M	A	M	J	J	A	S	O	N	D	J 17	F	M	A	M	J
Homes Sold	96	86	74	66	47	52	39	38	46	64	82	123	97	90	69	73	50	57	37	49	62	57	98	108	87	104	72	70	57	55	41	41	59	85	106	122
3 Mo. Roll Avg			85	75	62	55	46	43	41	49	64	90	101	103	85	77	64	60	48	48	49	56	72	88	98	100	88	82	66	61	51	46	47	62	83	104

	(000's) J 14	A	S	O	N	D	J 15	F	M	A	M	J	J	A	S	O	N	D	J 16	F	M	A	M	J	J	A	S	O	N	D	J 17	F	M	A	M	J
Median Sale Price	418	445	410	435	327	334	333	445	400	382	454	482	523	497	450	367	408	410	377	395	417	400	431	454	490	466	435	410	465	480	424	400	390	495	430	455
3 Mo. Roll Avg			424	430	391	365	331	371	393	409	412	439	486	501	490	438	408	395	398	394	396	404	416	428	458	470	464	437	437	452	456	435	405	428	438	460

	J 14	A	S	O	N	D	J 15	F	M	A	M	J	J	A	S	O	N	D	J 16	F	M	A	M	J	J	A	S	O	N	D	J 17	F	M	A	M	J
Inventory	289	272	288	272	233	207	211	236	292	344	349	400	397	384	394	381	322	276	248	291	333	363	389	394	418	415	407	365	350	295	307	344	357	371	355	346
MSI	3	3	4	4	5	4	5	6	6	5	4	3	4	4	6	5	6	5	7	6	5	6	4	4	5	4	6	5	6	5	7	8	6	4	3	3

	J 14	A	S	O	N	D	J 15	F	M	A	M	J	J	A	S	O	N	D	J 16	F	M	A	M	J	J	A	S	O	N	D	J 17	F	M	A	M	J
Days On Market	30	48	41	35	47	42	71	66	52	46	49	45	42	38	44	46	51	54	66	67	70	70	43	36	45	40	51	56	49	61	57	52	74	54	61	46
3 Mo. Roll Avg			40	41	41	41	53	60	63	55	49	47	45	42	41	43	47	50	57	62	68	69	61	50	41	40	45	49	52	55	56	57	61	60	63	54

	J 14	A	S	O	N	D	J 15	F	M	A	M	J	J	A	S	O	N	D	J 16	F	M	A	M	J	J	A	S	O	N	D	J 17	F	M	A	M	J
Price per Sq Ft	225	224	217	220	204	186	190	214	187	209	213	237	226	233	211	210	191	227	193	204	219	239	230	233	240	237	213	215	219	236	220	200	231	248	221	235
3 Mo. Roll Avg			222	220	214	203	193	197	197	203	203	220	225	232	223	218	204	209	204	208	205	221	229	234	234	237	230	222	216	223	225	219	217	226	233	235

	J 14	A	S	O	N	D	J 15	F	M	A	M	J	J	A	S	O	N	D	J 16	F	M	A	M	J	J	A	S	O	N	D	J 17	F	M	A	M	J
Sale to List Price	0.969	0.955	0.941	0.951	0.914	0.935	0.909	0.941	0.936	0.962	0.952	0.953	0.956	0.946	0.939	0.929	0.934	0.931	0.921	0.937	0.929	0.952	0.959	0.955	0.942	0.940	0.933	0.926	0.922	0.933	0.950	0.927	0.947	0.952	0.955	0.957
3 Mo. Roll Avg			0.955	0.949	0.935	0.933	0.919	0.928	0.929	0.946	0.950	0.956	0.954	0.952	0.947	0.938	0.934	0.931	0.929	0.930	0.929	0.939	0.947	0.955	0.952	0.946	0.938	0.933	0.927	0.927	0.935	0.937	0.941	0.942	0.951	0.955

	J 14	A	S	O	N	D	J 15	F	M	A	M	J	J	A	S	O	N	D	J 16	F	M	A	M	J	J	A	S	O	N	D	J 17	F	M	A	M	J
New Listings	134	114	132	93	58	51	95	96	174	179	175	200	159	149	144	96	72	41	89	138	180	207	188	178	165	135	142	108	78	42	116	152	199	173	168	192
Inventory	289	272	288	272	233	207	211	236	292	344	349	400	397	384	394	381	322	276	248	291	333	363	389	394	418	415	407	365	350	295	307	344	357	371	355	346
Sales	96	86	74	66	47	52	39	38	46	64	82	123	97	90	69	73	50	57	37	49	62	57	98	108	87	104	72	70	57	55	41	41	59	85	106	122

	(000's) J 14	A	S	O	N	D	J 15	F	M	A	M	J	J	A	S	O	N	D	J 16	F	M	A	M	J	J	A	S	O	N	D	J 17	F	M	A	M	J
Avg Sale Price	528	499	450	489	440	384	513	511	424	468	533	573	635	538	493	452	480	495	462	412	469	514	484	524	575	541	497	535	529	623	512	445	509	589	506	543
3 Mo. Roll Avg			493	479	460	438	445	469	483	468	475	524	580	582	555	494	475	475	479	456	448	465	489	507	528	547	538	524	521	563	555	527	489	514	535	546

© 2017 Coldwell Banker Residential Brokerage. All Rights Reserved. Coldwell Banker Residential Brokerage fully supports the principles of the Fair Housing Act and the Equal Opportunity Act. Coldwell Banker Residential Brokerage is operated by a subsidiary of NRT LLC. Coldwell Banker and the Coldwell Banker Logo are registered service marks owned by Coldwell Banker Real Estate LLC.

Based on information from Midwest Real Estate Data LLC for the period 7/1/2014 through 6/30/2017. Due to MLS reporting methods and allowable reporting policy, this data is only informational and may not be completely accurate. Therefore, Coldwell Banker Residential Brokerage does not guarantee the data accuracy. Data maintained by the MLS's may not reflect all real estate activity in the market.

