

MLS Area: Winnetka



ART WILSON

Broker, Realtor

847-363-1599

www.NorthShoreHomesOnline.com

Art.Wilson@cbexchange.com



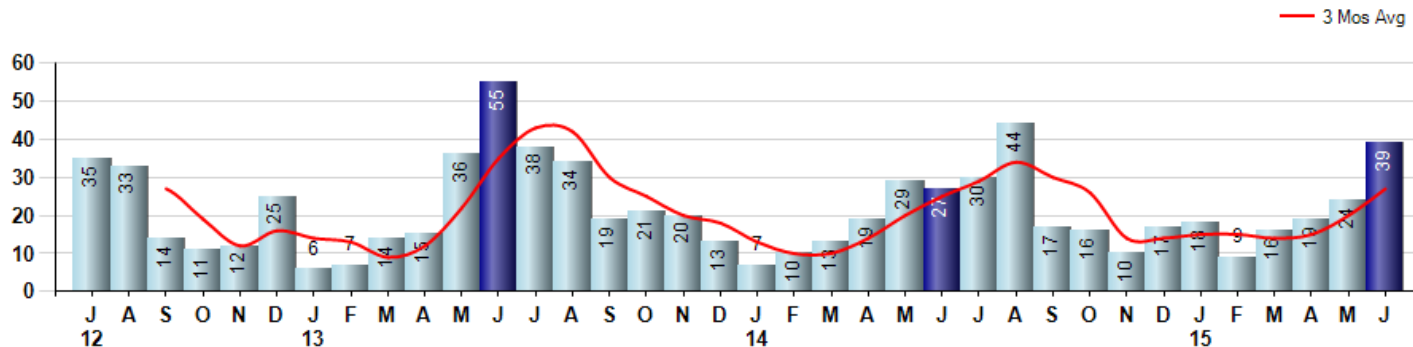
Price Range: \$0 to \$999,999,000 | Properties: Single Family Home, Townhome, Condo

Market Profile & Trends Overview	Month	Trending Versus*:				YTD	Trending Versus*:	
		LM	L3M	PYM	LY		PriorYTD	PriorYear
Median List Price of all Current Listings	\$1,445,000	↑		↓				
Average List Price of all Current Listings	\$1,903,245	↔		↓				
June Median Sales Price	\$1,253,500	↑	↑	↓	↑	\$1,213,750	↑	↑
June Average Sales Price	\$1,416,038	↓	↑	↑	↑	\$1,356,271	↑	↑
Total Properties Currently for Sale (Inventory)	189	↔		↑				
June Number of Properties Sold	39	↑		↑		125	↑	
June Average Days on Market (Solds)	77	↑	↑	↑	↑	85	↑	↑
June Month's Supply of Inventory	4.8	↓	↓	↓	↓	9.3	↑	↑
June Sale Price vs List Price Ratio	96.1%	↑	↑	↑	↑	94.7%	↑	↑

* LM=Last Month / L3M=Last 3 Months / PYM=Same Month Prior Year / LY=Last Year / YTD = Year-to-date

Property Sales

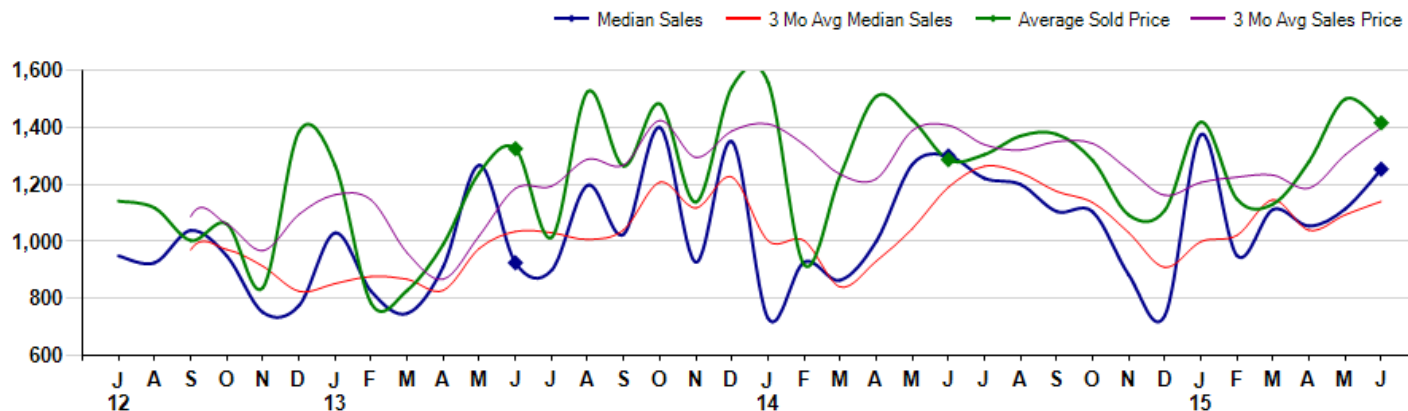
June Property sales were 39, up 44.4% from 27 in June of 2014 and 62.5% higher than the 24 sales last month. June 2015 sales were at a mid level compared to June of 2014 and 2013. June YTD sales of 125 are running 19.0% ahead of last year's year-to-date sales of 105.



Prices

The Median Sales Price in June was \$1,253,500, down -3.6% from \$1,300,000 in June of 2014 and up 12.5% from \$1,114,000 last month. The Average Sales Price in June was \$1,416,038, up 10.0% from \$1,286,750 in June of 2014 and down -5.6% from \$1,499,750 last month. June 2015 ASP was at highest level compared to June of 2014 and 2013.

Median means Middle (the same # of properties sold above and below Median) (000's)



© 2015 Coldwell Banker Real Estate LLC. All Rights Reserved. Coldwell Banker Residential Brokerage fully supports the principles of the Fair Housing Act and the Equal Opportunity Act. Coldwell Banker Residential Brokerage is operated by a subsidiary of NRT LLC. Coldwell Banker and the Coldwell Banker Logo are registered service marks owned by Coldwell Banker Real Estate LLC.

Based on information from Midwest Real Estate Data LLC for the period 7/1/2012 through 6/30/2015. Due to MLS reporting methods and allowable reporting policy, this data is only informational and may not be completely accurate. Therefore, Coldwell Banker Residential Brokerage does not guarantee the data accuracy. Data maintained by the MLS's may not reflect all real estate activity in the market.



MLS Area: Winnetka



ART WILSON

Broker, Realtor

847-363-1599

www.NorthShoreHomesOnline.com

Art.Wilson@cbexchange.com



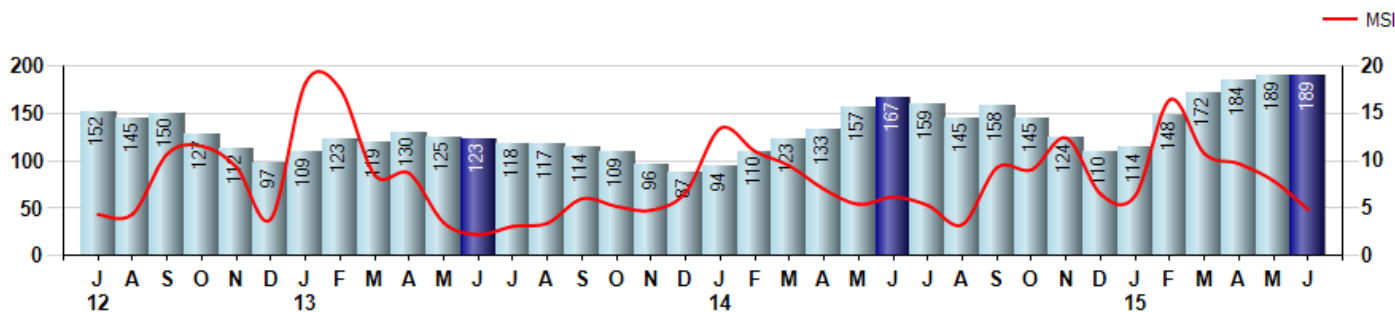
Price Range: \$0 to \$999,999,000 | Properties: Single Family Home, Townhome, Condo

Inventory & MSI

The Total Inventory of Properties available for sale as of June was 189, equal to 189 last month and up 13.2% from 167 in June of last year. June 2015 Inventory was at highest level compared to June of 2014 and 2013.

A comparatively lower MSI is more beneficial for sellers while a higher MSI is better for buyers. The June 2015 MSI of 4.8 months was at a mid range compared with June of 2014 and 2013.

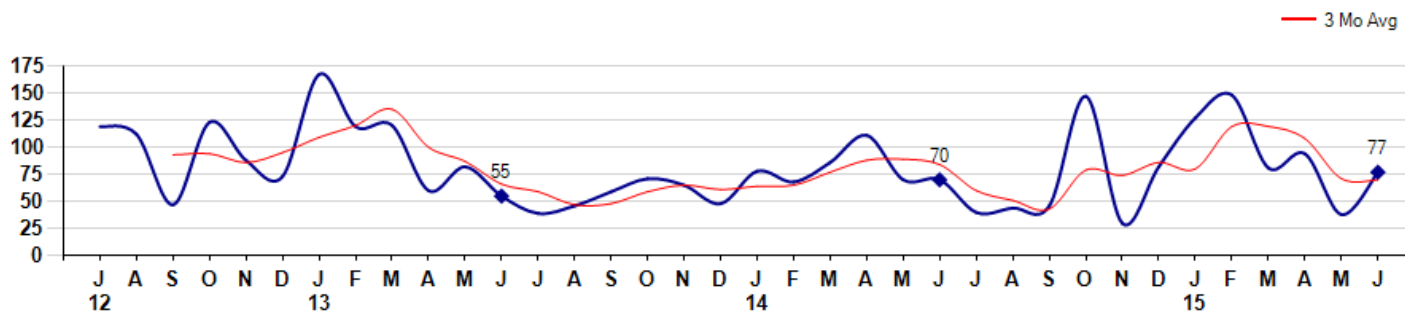
MSI is the # of months needed to sell all of the Inventory at the monthly Sales Pace



Market Time

The average Days On Market(DOM) shows how many days the average Property is on the Market before it sells. An upward trend in DOM tends to indicate a move towards more of a Buyer's market, a downward trend a move towards more of a Seller's market. The DOM for June was 77, up 102.6% from 38 days last month and up 10.0% from 70 days in June of last year. The June 2015 DOM was at its highest level compared with June of 2014 and 2013.

Average Days on Market(Listing to Contract) for properties sold during the month



MLS Area: Winnetka



ART WILSON

Broker, Realtor

847-363-1599

www.NorthShoreHomesOnline.com

Art.Wilson@cbexchange.com

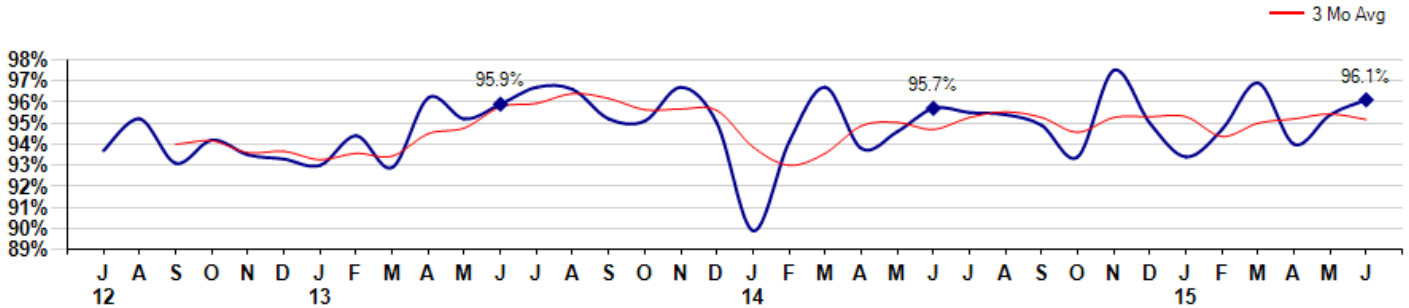


Price Range: \$0 to \$999,999,000 | Properties: Single Family Home, Townhome, Condo

Selling Price vs Listing Price

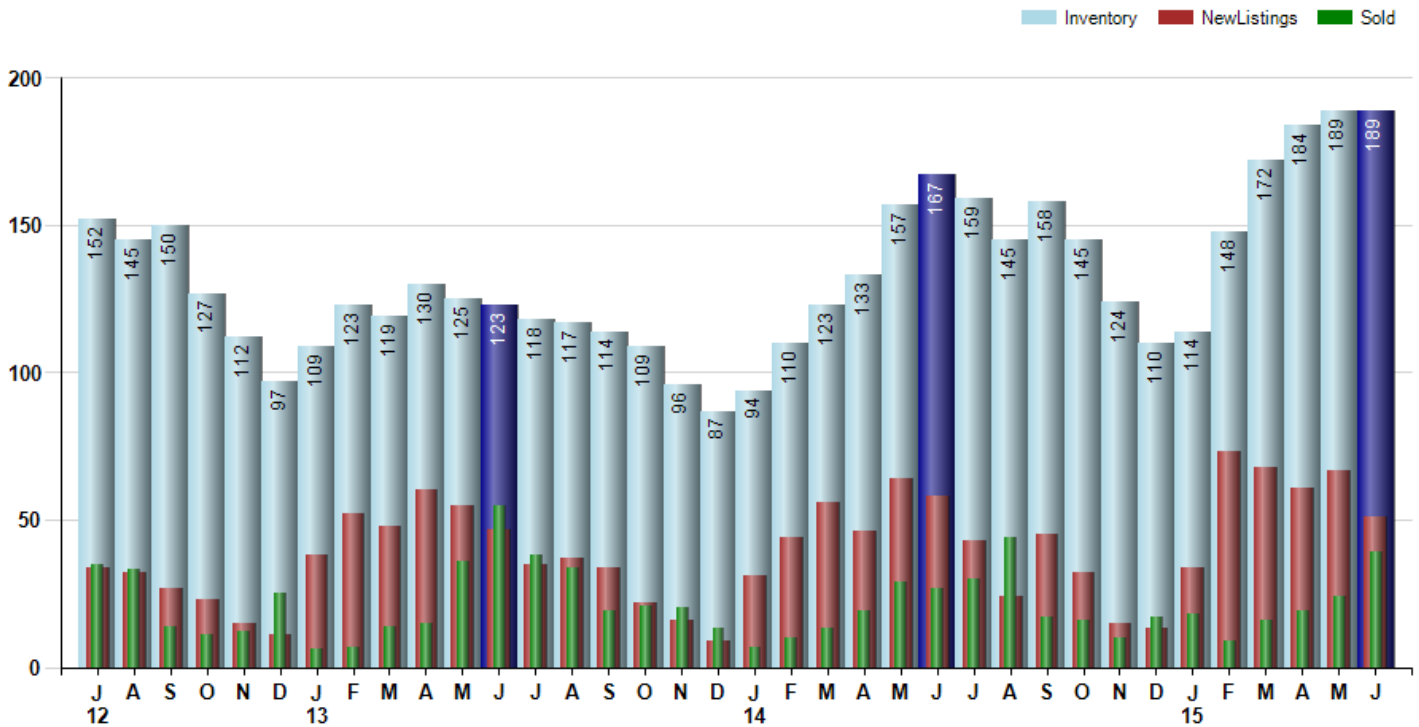
The Selling Price vs Listing Price reveals the average amount that Sellers are agreeing to come down from their list price. The lower the ratio is below 100% the more of a Buyer's market exists, a ratio at or above 100% indicates more of a Seller's market. The June 2015 Selling Price vs List Price of 96.1% was up from 95.4% last month and up from 95.7% in June of last year.

Avg Selling Price divided by Avg Listing Price for sold properties during the month



Inventory / New Listings / Sales

This last view of the market combines monthly inventory of Properties for sale along with New Listings and Sales. The graph shows the basic annual seasonality of the market as well as the relationship between these items. The number of New Listings in June 2015 was 51, down -23.9% from 67 last month and down -12.1% from 58 in June of last year.



© 2015 Coldwell Banker Real Estate LLC. All Rights Reserved. Coldwell Banker Residential Brokerage fully supports the principles of the Fair Housing Act and the Equal Opportunity Act. Coldwell Banker Residential Brokerage is operated by a subsidiary of NRT LLC. Coldwell Banker and the Coldwell Banker Logo are registered service marks owned by Coldwell Banker Real Estate LLC.

Based on information from Midwest Real Estate Data LLC for the period 7/1/2012 through 6/30/2015. Due to MLS reporting methods and allowable reporting policy, this data is only informational and may not be completely accurate. Therefore, Coldwell Banker Residential Brokerage does not guarantee the data accuracy. Data maintained by the MLS's may not reflect all real estate activity in the market.



MLS Area: Winnetka



ART WILSON
 Broker, Realtor
 847-363-1599
 www.NorthShoreHomesOnline.com
 Art.Wilson@cbexchange.com



Price Range: \$0 to \$999,999,000 | Properties: Single Family Home, Townhome, Condo

	J 12	A	S	O	N	D	J 13	F	M	A	M	J	J	A	S	O	N	D	J 14	F	M	A	M	J	J	A	S	O	N	D	J 15	F	M	A	M	J
Homes Sold	35	33	14	11	12	25	6	7	14	15	36	55	38	34	19	21	20	13	7	10	13	19	29	27	30	44	17	16	10	17	18	9	16	19	24	39
3 Mo. Roll Avg			27	19	12	16	14	13	9	12	22	35	43	42	30	25	20	18	13	10	10	14	20	25	29	34	30	26	14	14	15	15	14	15	20	27

	(000's)	J 12	A	S	O	N	D	J 13	F	M	A	M	J	J	A	S	O	N	D	J 14	F	M	A	M	J	J	A	S	O	N	D	J 15	F	M	A	M	J
Median Sale Price	949	925	1,039	949	751	775	1,030	825	748	912	1,268	925	899	1,198	1,025	1,400	928	1,350	730	928	864	1,000	1,270	1,300	1,222	1,200	1,105	1,104	883	740	1,375	950	1,113	1,054	1,114	1,254	
3 Mo. Roll Avg			971	971	913	825	852	877	868	828	976	1,035	1,030	1,007	1,040	1,208	1,118	1,226	1,003	1,003	841	931	1,045	1,190	1,264	1,241	1,176	1,136	1,031	909	999	1,022	1,146	1,039	1,094	1,141	

	J 12	A	S	O	N	D	J 13	F	M	A	M	J	J	A	S	O	N	D	J 14	F	M	A	M	J	J	A	S	O	N	D	J 15	F	M	A	M	J
Inventory	152	145	150	127	112	97	109	123	119	130	125	123	118	117	114	109	96	87	94	110	123	133	157	167	159	145	158	145	124	110	114	148	172	184	189	189
MSI	4	4	11	12	9	4	18	18	9	9	3	2	3	3	6	5	5	7	13	11	9	7	5	6	5	3	9	9	12	6	6	16	11	10	8	5

	J 12	A	S	O	N	D	J 13	F	M	A	M	J	J	A	S	O	N	D	J 14	F	M	A	M	J	J	A	S	O	N	D	J 15	F	M	A	M	J
Days On Market	119	112	47	123	88	73	167	119	120	60	82	55	39	46	59	71	65	48	78	68	86	111	70	70	40	44	46	147	30	82	127	148	81	94	38	77
3 Mo. Roll Avg			93	94	86	95	109	120	135	100	87	66	59	47	48	59	65	61	64	65	77	88	89	84	60	51	43	79	74	86	80	119	119	108	71	70

	J 12	A	S	O	N	D	J 13	F	M	A	M	J	J	A	S	O	N	D	J 14	F	M	A	M	J	J	A	S	O	N	D	J 15	F	M	A	M	J
Price per Sq Ft	324	285	268	327	290	279	284	335	196	332	287	364	352	317	329	315	308	334	427	261	348	317	389	342	295	350	358	290	328	342	369	256	297	377	408	363
3 Mo. Roll Avg			292	293	295	299	284	299	272	288	272	328	334	344	333	320	317	319	356	341	345	309	351	349	342	329	334	333	325	320	346	322	307	310	361	383

	J 12	A	S	O	N	D	J 13	F	M	A	M	J	J	A	S	O	N	D	J 14	F	M	A	M	J	J	A	S	O	N	D	J 15	F	M	A	M	J
Sale to List Price	0.937	0.952	0.931	0.942	0.935	0.933	0.930	0.944	0.929	0.962	0.952	0.959	0.967	0.966	0.952	0.951	0.967	0.950	0.899	0.941	0.967	0.938	0.946	0.957	0.955	0.954	0.949	0.934	0.975	0.950	0.934	0.947	0.969	0.940	0.954	0.961
3 Mo. Roll Avg			0.940	0.942	0.936	0.937	0.933	0.936	0.934	0.945	0.948	0.958	0.959	0.964	0.962	0.956	0.957	0.956	0.939	0.930	0.936	0.949	0.950	0.947	0.953	0.955	0.953	0.946	0.953	0.953	0.944	0.950	0.952	0.954	0.952	

	J 12	A	S	O	N	D	J 13	F	M	A	M	J	J	A	S	O	N	D	J 14	F	M	A	M	J	J	A	S	O	N	D	J 15	F	M	A	M	J
New Listings	34	32	27	23	15	11	38	52	48	60	55	47	35	37	34	22	16	9	31	44	56	46	64	58	43	24	45	32	15	13	34	73	68	61	67	51
Inventory	152	145	150	127	112	97	109	123	119	130	125	123	118	117	114	109	96	87	94	110	123	133	157	167	159	145	158	145	124	110	114	148	172	184	189	189
Sales	35	33	14	11	12	25	6	7	14	15	36	55	38	34	19	21	20	13	7	10	13	19	29	27	30	44	17	16	10	17	18	9	16	19	24	39

	(000's)	J 12	A	S	O	N	D	J 13	F	M	A	M	J	J	A	S	O	N	D	J 14	F	M	A	M	J	J	A	S	O	N	D	J 15	F	M	A	M	J
Avg Sale Price	1,142	1,118	1,003	1,061	838	1,386	1,268	783	828	991	1,242	1,325	1,014	1,526	1,264	1,483	1,138	1,542	1,558	919	1,231	1,509	1,427	1,287	1,305	1,370	1,376	1,284	1,093	1,110	1,419	1,148	1,131	1,281	1,500	1,416	
3 Mo. Roll Avg			1,087	1,061	967	1,095	1,164	1,145	960	867	1,020	1,186	1,194	1,288	1,268	1,424	1,295	1,387	1,412	1,340	1,236	1,219	1,389	1,407	1,339	1,321	1,351	1,344	1,251	1,162	1,207	1,226	1,233	1,187	1,304	1,399	

© 2015 Coldwell Banker Real Estate LLC. All Rights Reserved. Coldwell Banker Residential Brokerage fully supports the principles of the Fair Housing Act and the Equal Opportunity Act. Coldwell Banker Residential Brokerage is operated by a subsidiary of NRT LLC. Coldwell Banker and the Coldwell Banker Logo are registered service marks owned by Coldwell Banker Real Estate LLC.

Based on information from Midwest Real Estate Data LLC for the period 7/1/2012 through 6/30/2015. Due to MLS reporting methods and allowable reporting policy, this data is only informational and may not be completely accurate. Therefore, Coldwell Banker Residential Brokerage does not guarantee the data accuracy. Data maintained by the MLS's may not reflect all real estate activity in the market.

