

MLS Area: Lake Forest



ART WILSON

Broker, Realtor

847-363-1599

www.NorthShoreHomesOnline.com

Art.Wilson@cbexchange.com



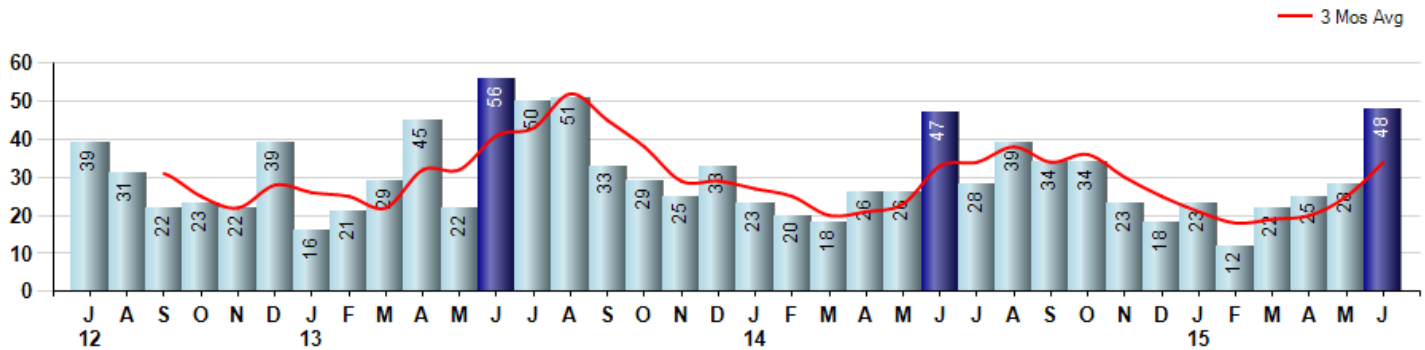
Price Range: \$0 to \$999,999,000 | Properties: Single Family Home, Townhome, Condo

Market Profile & Trends Overview	Month	Trending Versus*:				YTD	Trending Versus*:	
		LM	L3M	PYM	LY		PriorYTD	PriorYear
Median List Price of all Current Listings	\$1,199,000	↔		↓				
Average List Price of all Current Listings	\$1,644,876	↑		↓				
June Median Sales Price	\$815,000	↑	↑	↑	↑	\$702,500	↓	↓
June Average Sales Price	\$1,038,618	↑	↑	↑	↑	\$867,169	↓	↓
Total Properties Currently for Sale (Inventory)	329	↑		↑				
June Number of Properties Sold	48	↑		↑		158	↓	
June Average Days on Market (Solds)	89	↓	↓	↑	↓	89	↓	↓
June Month's Supply of Inventory	6.9	↓	↓	↑	↓	11.6	↑	↑
June Sale Price vs List Price Ratio	94.9%	↑	↑	↔	↑	93.6%	↑	↑

* LM=Last Month / L3M=Last 3 Months / PYM=Same Month Prior Year / LY=Last Year / YTD = Year-to-date

Property Sales

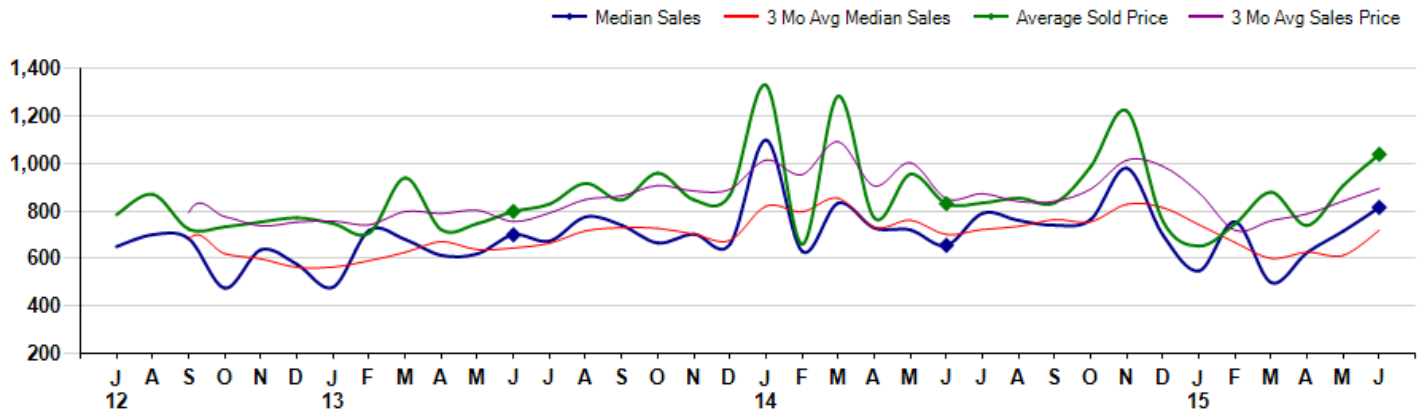
June Property sales were 48, up 2.1% from 47 in June of 2014 and 71.4% higher than the 28 sales last month. June 2015 sales were at a mid level compared to June of 2014 and 2013. June YTD sales of 158 are running -1.3% behind last year's year-to-date sales of 160.



Prices

The Median Sales Price in June was \$815,000, up 24.4% from \$655,000 in June of 2014 and up 14.0% from \$715,000 last month. The Average Sales Price in June was \$1,038,618, up 25.1% from \$830,305 in June of 2014 and up 14.5% from \$907,296 last month. June 2015 ASP was at highest level compared to June of 2014 and 2013.

Median means Middle (the same # of properties sold above and below Median) (000's)



MLS Area: Lake Forest



ART WILSON
 Broker, Realtor
 847-363-1599
 www.NorthShoreHomesOnline.com
 Art.Wilson@cbexchange.com



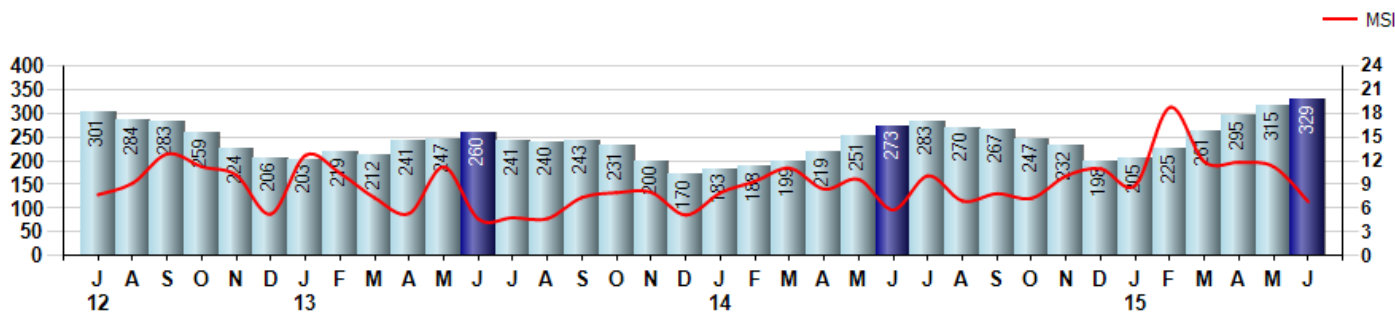
Price Range: \$0 to \$999,999,000 | Properties: Single Family Home, Townhome, Condo

Inventory & MSI

The Total Inventory of Properties available for sale as of June was 329, up 4.4% from 315 last month and up 20.5% from 273 in June of last year. June 2015 Inventory was at highest level compared to June of 2014 and 2013.

A comparatively lower MSI is more beneficial for sellers while a higher MSI is better for buyers. The June 2015 MSI of 6.9 months was at its highest level compared with June of 2014 and 2013.

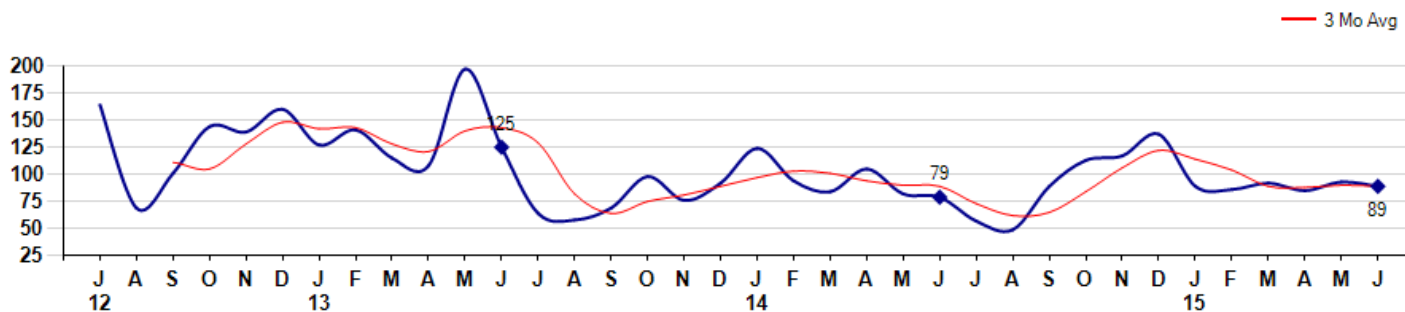
MSI is the # of months needed to sell all of the Inventory at the monthly Sales Pace



Market Time

The average Days On Market(DOM) shows how many days the average Property is on the Market before it sells. An upward trend in DOM tends to indicate a move towards more of a Buyer's market, a downward trend a move towards more of a Seller's market. The DOM for June was 89, down -4.3% from 93 days last month and up 12.7% from 79 days in June of last year. The June 2015 DOM was at a mid range compared with June of 2014 and 2013.

Average Days on Market(Listing to Contract) for properties sold during the month



© 2015 Coldwell Banker Real Estate LLC. All Rights Reserved. Coldwell Banker Residential Brokerage fully supports the principles of the Fair Housing Act and the Equal Opportunity Act. Coldwell Banker Residential Brokerage is operated by a subsidiary of NRT LLC. Coldwell Banker and the Coldwell Banker Logo are registered service marks owned by Coldwell Banker Real Estate LLC.

Based on information from Midwest Real Estate Data LLC for the period 7/1/2012 through 6/30/2015. Due to MLS reporting methods and allowable reporting policy, this data is only informational and may not be completely accurate. Therefore, Coldwell Banker Residential Brokerage does not guarantee the data accuracy. Data maintained by the MLS's may not reflect all real estate activity in the market.



MLS Area: Lake Forest



ART WILSON

Broker, Realtor

847-363-1599

www.NorthShoreHomesOnline.com

Art.Wilson@cbexchange.com

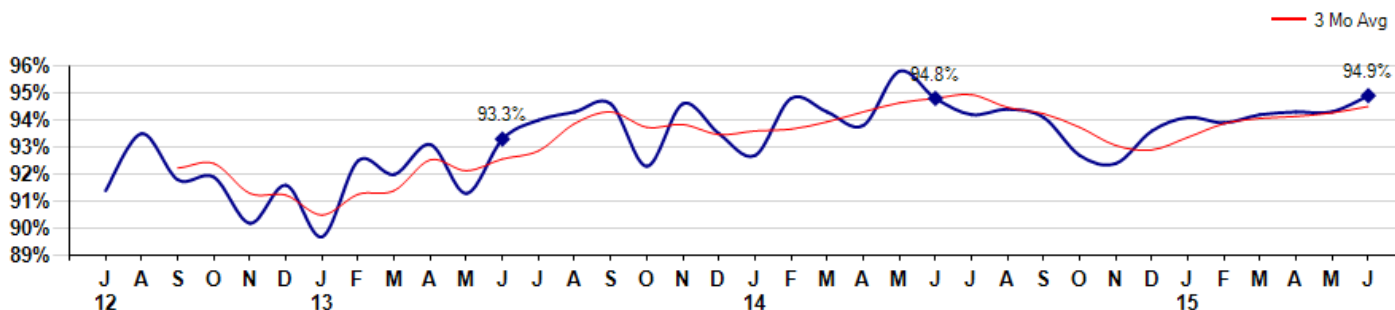


Price Range: \$0 to \$999,999,000 | Properties: Single Family Home, Townhome, Condo

Selling Price vs Listing Price

The Selling Price vs Listing Price reveals the average amount that Sellers are agreeing to come down from their list price. The lower the ratio is below 100% the more of a Buyer's market exists, a ratio at or above 100% indicates more of a Seller's market. The June 2015 Selling Price vs List Price of 94.9% was up from 94.3% last month and up from 94.8% in June of last year.

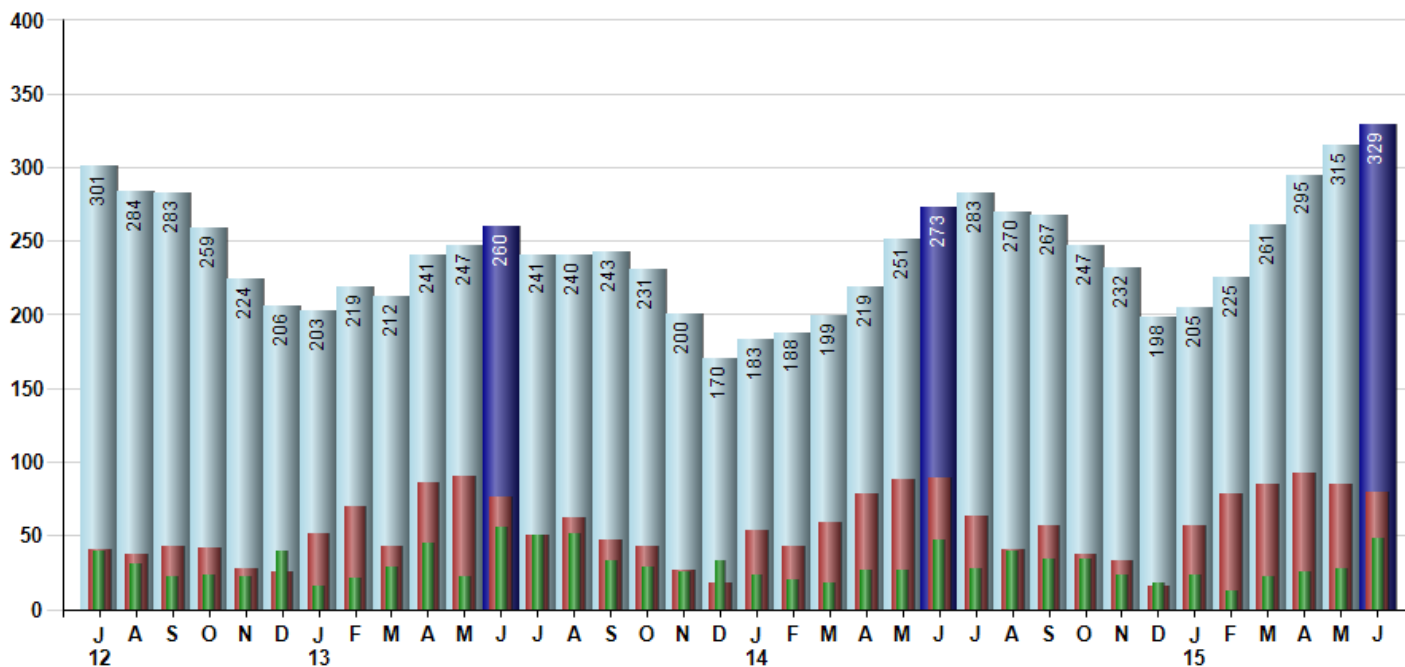
Avg Selling Price divided by Avg Listing Price for sold properties during the month



Inventory / New Listings / Sales

This last view of the market combines monthly inventory of Properties for sale along with New Listings and Sales. The graph shows the basic annual seasonality of the market as well as the relationship between these items. The number of New Listings in June 2015 was 79, down -7.1% from 85 last month and down -11.2% from 89 in June of last year.

Inventory New Listings Sold



© 2015 Coldwell Banker Real Estate LLC. All Rights Reserved. Coldwell Banker Residential Brokerage fully supports the principles of the Fair Housing Act and the Equal Opportunity Act. Coldwell Banker Residential Brokerage is operated by a subsidiary of NRT LLC. Coldwell Banker and the Coldwell Banker Logo are registered service marks owned by Coldwell Banker Real Estate LLC.

Based on information from Midwest Real Estate Data LLC for the period 7/1/2012 through 6/30/2015. Due to MLS reporting methods and allowable reporting policy, this data is only informational and may not be completely accurate. Therefore, Coldwell Banker Residential Brokerage does not guarantee the data accuracy. Data maintained by the MLS's may not reflect all real estate activity in the market.



MLS Area: Lake Forest



ART WILSON
 Broker, Realtor
 847-363-1599
 www.NorthShoreHomesOnline.com
 Art.Wilson@cbexchange.com



Price Range: \$0 to \$999,999,000 | Properties: Single Family Home, Townhome, Condo

	J 12	A	S	O	N	D	J 13	F	M	A	M	J	J	A	S	O	N	D	J 14	F	M	A	M	J	J	A	S	O	N	D	J 15	F	M	A	M	J
Homes Sold	39	31	22	23	22	39	16	21	29	45	22	56	50	51	33	29	25	33	23	20	18	26	26	47	28	39	34	34	23	18	23	12	22	25	28	48
3 Mo. Roll Avg			31	25	22	28	26	25	22	32	32	41	43	52	45	38	29	29	27	25	20	21	23	33	34	38	34	36	30	25	21	18	19	20	25	34

	(000's) J 12	A	S	O	N	D	J 13	F	M	A	M	J	J	A	S	O	N	D	J 14	F	M	A	M	J	J	A	S	O	N	D	J 15	F	M	A	M	J
Median Sale Price	650	700	683	475	637	575	479	718	680	613	619	700	674	775	740	665	703	660	1,099	630	833	729	720	655	790	760	740	764	980	699	548	755	499	625	715	815
3 Mo. Roll Avg			678	619	598	562	563	591	626	670	637	644	664	716	730	727	703	676	821	796	854	731	761	701	722	735	763	755	828	814	742	667	600	626	613	718

	J 12	A	S	O	N	D	J 13	F	M	A	M	J	J	A	S	O	N	D	J 14	F	M	A	M	J	J	A	S	O	N	D	J 15	F	M	A	M	J
Inventory	301	284	283	259	224	206	203	219	212	241	247	260	241	240	243	231	200	170	183	188	199	219	251	273	283	270	267	247	232	198	205	225	261	295	315	329
MSI	8	9	13	11	10	5	13	10	7	5	11	5	5	5	7	8	8	5	8	9	11	8	10	6	10	7	8	7	10	11	9	19	12	12	11	7

	J 12	A	S	O	N	D	J 13	F	M	A	M	J	J	A	S	O	N	D	J 14	F	M	A	M	J	J	A	S	O	N	D	J 15	F	M	A	M	J
Days On Market	164	69	101	144	139	160	127	141	115	108	197	125	64	58	69	98	76	92	124	94	84	105	82	79	57	49	89	113	117	137	89	86	92	85	93	89
3 Mo. Roll Avg			111	105	128	148	142	143	128	121	140	143	129	82	64	75	81	89	97	103	101	94	90	89	73	62	65	84	106	122	114	104	89	88	90	89

	J 12	A	S	O	N	D	J 13	F	M	A	M	J	J	A	S	O	N	D	J 14	F	M	A	M	J	J	A	S	O	N	D	J 15	F	M	A	M	J
Price per Sq Ft	220	253	234	216	206	212	202	208	248	211	226	241	247	258	247	267	241	262	288	229	285	241	288	256	258	262	275	271	275	266	223	228	242	242	273	278
3 Mo. Roll Avg			236	234	219	211	207	207	219	222	228	226	238	249	251	257	252	257	264	260	267	252	271	262	267	259	265	269	274	271	255	239	231	237	252	264

	J 12	A	S	O	N	D	J 13	F	M	A	M	J	J	A	S	O	N	D	J 14	F	M	A	M	J	J	A	S	O	N	D	J 15	F	M	A	M	J
Sale to List Price	0.914	0.935	0.918	0.919	0.902	0.916	0.897	0.925	0.920	0.931	0.913	0.933	0.940	0.943	0.946	0.923	0.946	0.935	0.927	0.948	0.943	0.938	0.958	0.948	0.942	0.944	0.941	0.927	0.924	0.936	0.941	0.939	0.942	0.943	0.943	0.949
3 Mo. Roll Avg			0.922	0.924	0.913	0.912	0.905	0.913	0.914	0.925	0.921	0.926	0.929	0.939	0.943	0.937	0.938	0.935	0.936	0.937	0.939	0.943	0.946	0.948	0.949	0.945	0.942	0.937	0.931	0.929	0.934	0.939	0.941	0.941	0.943	0.945

	J 12	A	S	O	N	D	J 13	F	M	A	M	J	J	A	S	O	N	D	J 14	F	M	A	M	J	J	A	S	O	N	D	J 15	F	M	A	M	J
New Listings	40	37	43	42	28	25	51	70	43	86	90	76	50	62	47	43	27	18	53	43	59	78	88	89	63	40	57	37	33	16	57	78	85	92	85	79
Inventory	301	284	283	259	224	206	203	219	212	241	247	260	241	240	243	231	200	170	183	188	199	219	251	273	283	270	267	247	232	198	205	225	261	295	315	329
Sales	39	31	22	23	22	39	16	21	29	45	22	56	50	51	33	29	25	33	23	20	18	26	26	47	28	39	34	34	23	18	23	12	22	25	28	48

	(000's) J 12	A	S	O	N	D	J 13	F	M	A	M	J	J	A	S	O	N	D	J 14	F	M	A	M	J	J	A	S	O	N	D	J 15	F	M	A	M	J
Avg Sale Price	784	871	724	733	754	771	748	706	939	721	747	798	829	917	846	959	847	868	1,330	660	1,284	771	954	830	834	854	834	987	1,221	757	652	745	879	739	907	1,039
3 Mo. Roll Avg			793	776	737	753	757	742	798	789	802	755	791	848	864	907	884	891	1,015	953	1,091	905	1,003	852	873	839	841	892	1,014	988	877	718	759	788	842	895

© 2015 Coldwell Banker Real Estate LLC. All Rights Reserved. Coldwell Banker Residential Brokerage fully supports the principles of the Fair Housing Act and the Equal Opportunity Act. Coldwell Banker Residential Brokerage is operated by a subsidiary of NRT LLC. Coldwell Banker and the Coldwell Banker Logo are registered service marks owned by Coldwell Banker Real Estate LLC.

Based on information from Midwest Real Estate Data LLC for the period 7/1/2012 through 6/30/2015. Due to MLS reporting methods and allowable reporting policy, this data is only informational and may not be completely accurate. Therefore, Coldwell Banker Residential Brokerage does not guarantee the data accuracy. Data maintained by the MLS's may not reflect all real estate activity in the market.

