

MLS Area: Evanston



ART WILSON

Broker, Realtor

847-363-1599

www.NorthShoreHomesOnline.com

Art.Wilson@cbexchange.com



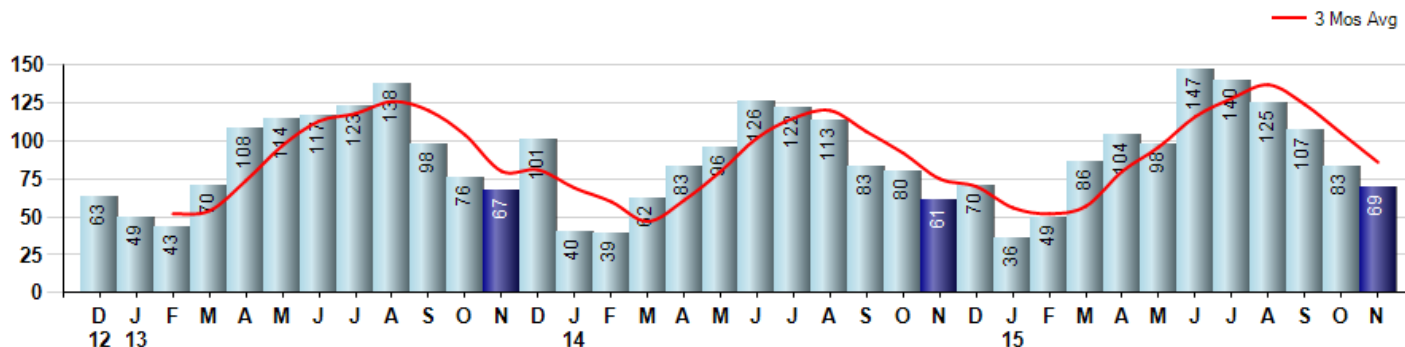
Price Range: \$0 to \$999,999,000 | Properties: Single Family Home, Townhome, Condo

Market Profile & Trends Overview	Month	Trending Versus*:				YTD	Trending Versus*:	
		LM	L3M	PYM	LY		PriorYTD	PriorYear
Median List Price of all Current Listings	\$293,500	↓		↑				
Average List Price of all Current Listings	\$435,272	↔		↔				
November Median Sales Price	\$294,000	↔	↓	↑	↓	\$320,000	↑	↑
November Average Sales Price	\$330,415	↓	↓	↑	↓	\$397,066	↑	↑
Total Properties Currently for Sale (Inventory)	292	↓		↓				
November Number of Properties Sold	69	↓		↑		1,044	↑	
November Average Days on Market (Solds)	62	↑	↑	↑	↑	58	↑	↓
November Month's Supply of Inventory	4.2	↔	↑	↓	↓	4.3	↓	↓
November Sale Price vs List Price Ratio	97.1%	↑	↑	↑	↑	96.6%	↓	↔

* LM=Last Month / L3M=Last 3 Months / PYM=Same Month Prior Year / LY=Last Year / YTD = Year-to-date

Property Sales

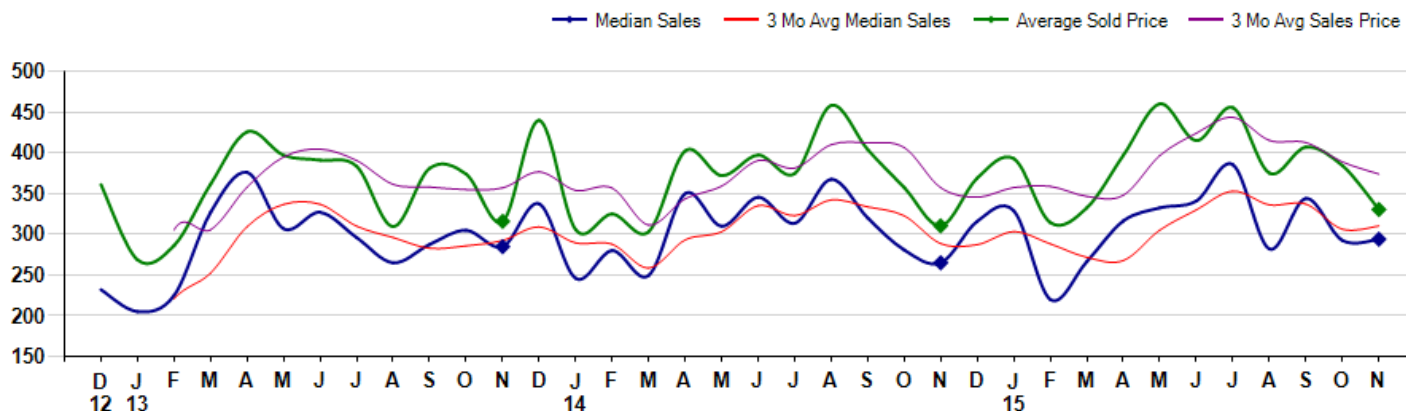
November Property sales were 69, up 13.1% from 61 in November of 2014 and -16.9% lower than the 83 sales last month. November 2015 sales were at their highest level compared to November of 2014 and 2013. November YTD sales of 1,044 are running 15.4% ahead of last year's year-to-date sales of 905.



Prices

The Median Sales Price in November was \$294,000, up 10.9% from \$265,000 in November of 2014 and up 0.5% from \$292,500 last month. The Average Sales Price in November was \$330,415, up 6.5% from \$310,374 in November of 2014 and down -14.1% from \$384,461 last month. November 2015 ASP was at highest level compared to November of 2014 and 2013.

Median means Middle (the same # of properties sold above and below Median) (000's)



© 2015 Coldwell Banker Real Estate LLC. All Rights Reserved. Coldwell Banker Residential Brokerage fully supports the principles of the Fair Housing Act and the Equal Opportunity Act. Coldwell Banker Residential Brokerage is operated by a subsidiary of NRT LLC. Coldwell Banker and the Coldwell Banker Logo are registered service marks owned by Coldwell Banker Real Estate LLC.

Based on information from Midwest Real Estate Data LLC for the period 12/1/2012 through 11/30/2015. Due to MLS reporting methods and allowable reporting policy, this data is only informational and may not be completely accurate. Therefore, Coldwell Banker Residential Brokerage does not guarantee the data accuracy. Data maintained by the MLS's may not reflect all real estate activity in the market.



MLS Area: Evanston



ART WILSON

Broker, Realtor

847-363-1599

www.NorthShoreHomesOnline.com

Art.Wilson@cbexchange.com



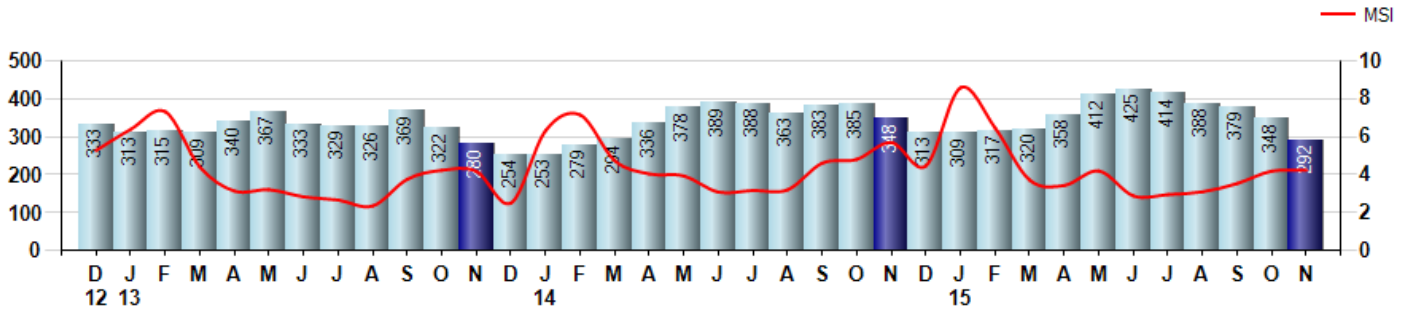
Price Range: \$0 to \$999,999,000 | Properties: Single Family Home, Townhome, Condo

Inventory & MSI

The Total Inventory of Properties available for sale as of November was 292, down -16.1% from 348 last month and down -16.1% from 348 in November of last year. November 2015 Inventory was at a mid range compared to November of 2014 and 2013.

A comparatively lower MSI is more beneficial for sellers while a higher MSI is better for buyers. The November 2015 MSI of 4.2 months was at a mid range compared with November of 2014 and 2013.

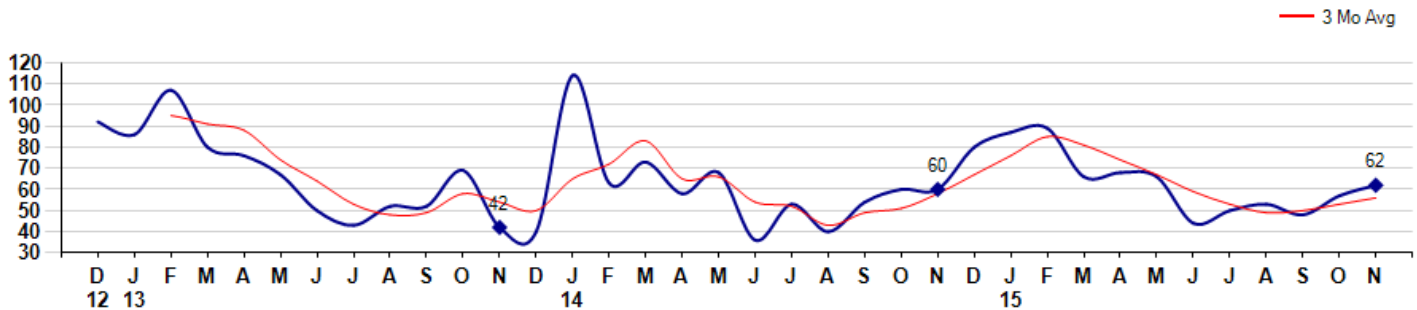
MSI is the # of months needed to sell all of the Inventory at the monthly Sales Pace



Market Time

The average Days On Market(DOM) shows how many days the average Property is on the Market before it sells. An upward trend in DOM tends to indicate a move towards more of a Buyer's market, a downward trend a move towards more of a Seller's market. The DOM for November was 62, up 8.8% from 57 days last month and up 3.3% from 60 days in November of last year. The November 2015 DOM was at its highest level compared with November of 2014 and 2013.

Average Days on Market(Listing to Contract) for properties sold during the month



MLS Area: Evanston



ART WILSON

Broker, Realtor

847-363-1599

www.NorthShoreHomesOnline.com

Art.Wilson@cbexchange.com

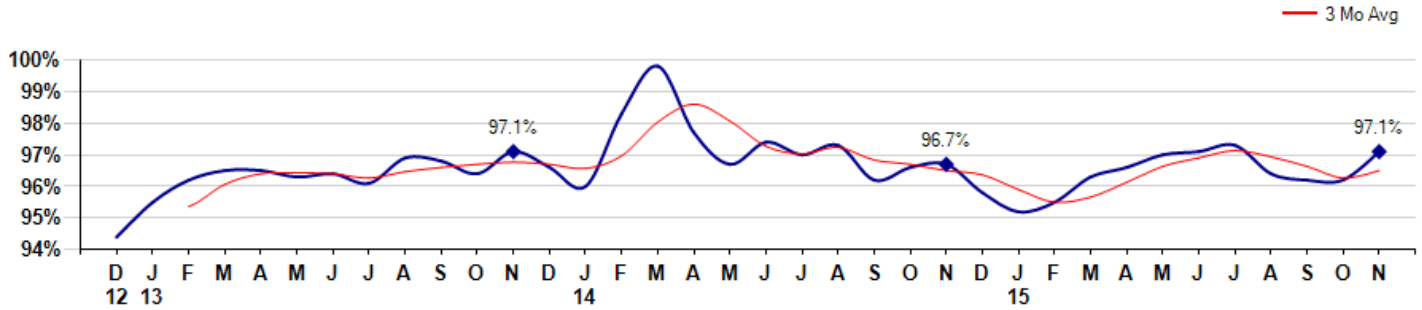


Price Range: \$0 to \$999,999,000 | Properties: Single Family Home, Townhome, Condo

Selling Price vs Listing Price

The Selling Price vs Listing Price reveals the average amount that Sellers are agreeing to come down from their list price. The lower the ratio is below 100% the more of a Buyer's market exists, a ratio at or above 100% indicates more of a Seller's market. The November 2015 Selling Price vs List Price of 97.1% was up from 96.2% last month and up from 96.7% in November of last year.

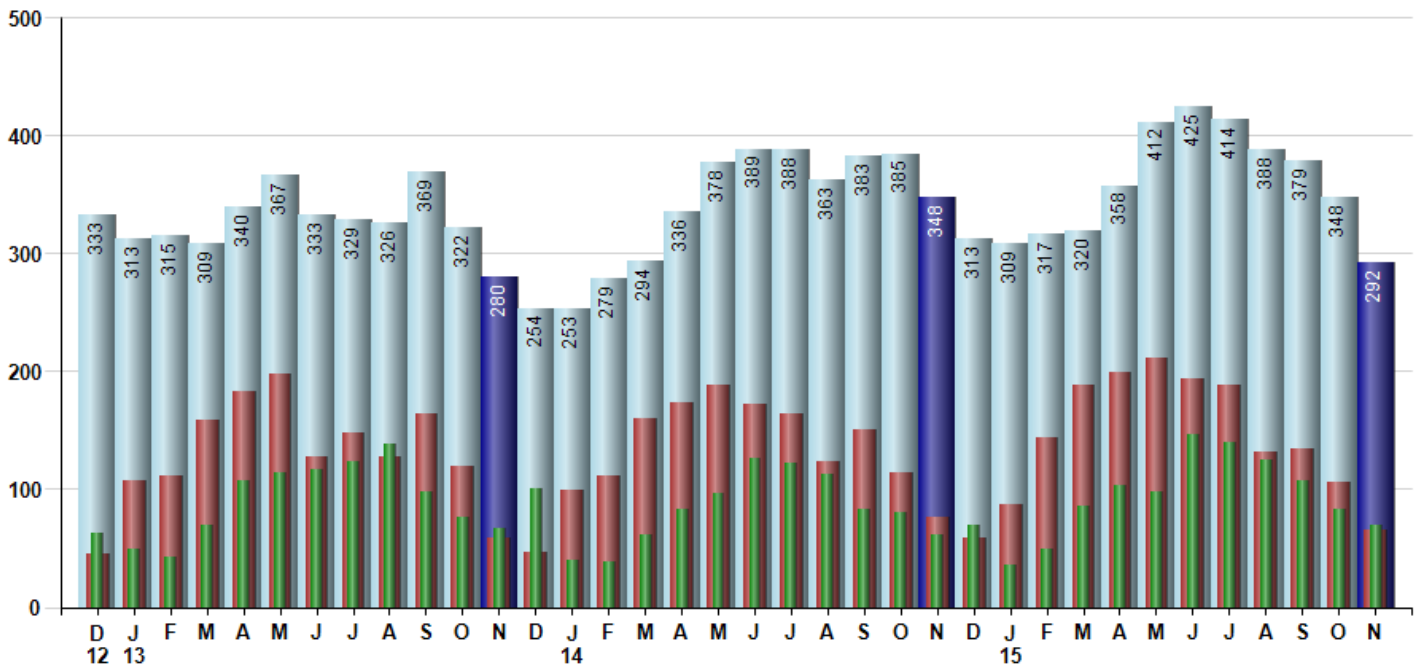
Avg Selling Price divided by Avg Listing Price for sold properties during the month



Inventory / New Listings / Sales

This last view of the market combines monthly inventory of Properties for sale along with New Listings and Sales. The graph shows the basic annual seasonality of the market as well as the relationship between these items. The number of New Listings in November 2015 was 66, down -37.7% from 106 last month and down -13.2% from 76 in November of last year.

Inventory NewListings Sold



© 2015 Coldwell Banker Real Estate LLC. All Rights Reserved. Coldwell Banker Residential Brokerage fully supports the principles of the Fair Housing Act and the Equal Opportunity Act. Coldwell Banker Residential Brokerage is operated by a subsidiary of NRT LLC. Coldwell Banker and the Coldwell Banker Logo are registered service marks owned by Coldwell Banker Real Estate LLC.

Based on information from Midwest Real Estate Data LLC for the period 12/1/2012 through 11/30/2015. Due to MLS reporting methods and allowable reporting policy, this data is only informational and may not be completely accurate. Therefore, Coldwell Banker Residential Brokerage does not guarantee the data accuracy. Data maintained by the MLS's may not reflect all real estate activity in the market.



MARKET ACTION REPORT

November 2015

MLS Area: Evanston



ART WILSON
 Broker, Realtor
 847-363-1599
 www.NorthShoreHomesOnline.com
 Art.Wilson@cbexchange.com



Price Range: \$0 to \$999,999,000 | Properties: Single Family Home, Townhome, Condo

	D 12	J 13	F	M	A	M	J	J	A	S	O	N	D	J 14	F	M	A	M	J	J	A	S	O	N	D	J 15	F	M	A	M	J	J	A	S	O	N
Homes Sold	63	49	43	70	108	114	117	123	138	98	76	67	101	40	39	62	83	96	126	122	113	83	80	61	70	36	49	86	104	98	147	140	125	107	83	69
3 Mo. Roll Avg			52	54	74	97	113	118	126	120	104	80	81	69	60	47	61	80	102	115	120	106	92	75	70	56	52	57	80	96	116	128	137	124	105	86

(000's)	D 12	J 13	F	M	A	M	J	J	A	S	O	N	D	J 14	F	M	A	M	J	J	A	S	O	N	D	J 15	F	M	A	M	J	J	A	S	O	N
Median Sale Price	232	205	225	327	376	307	327	296	265	288	305	285	338	246	280	250	350	310	346	314	368	320	281	265	316	329	220	267	317	333	341	386	282	344	293	294
3 Mo. Roll Avg			221	252	309	337	337	310	296	283	286	292	309	289	288	259	293	303	335	323	342	334	323	289	287	303	288	272	268	305	330	353	336	337	306	310

	D 12	J 13	F	M	A	M	J	J	A	S	O	N	D	J 14	F	M	A	M	J	J	A	S	O	N	D	J 15	F	M	A	M	J	J	A	S	O	N
Inventory	333	313	315	309	340	367	333	329	326	369	322	280	254	253	279	294	336	378	389	388	363	383	385	348	313	309	317	320	358	412	425	414	388	379	348	292
MSI	5	6	7	4	3	3	3	3	2	4	4	4	3	6	7	5	4	4	3	3	3	5	5	6	4	9	6	4	3	4	3	3	3	4	4	4

	D 12	J 13	F	M	A	M	J	J	A	S	O	N	D	J 14	F	M	A	M	J	J	A	S	O	N	D	J 15	F	M	A	M	J	J	A	S	O	N
Days On Market	92	86	107	80	76	67	50	43	52	52	69	42	40	114	63	73	58	68	36	53	40	54	60	60	80	87	89	66	68	66	44	50	53	48	57	62
3 Mo. Roll Avg			95	91	88	74	64	53	48	49	58	54	50	65	72	83	65	66	54	52	43	49	51	58	67	76	85	81	74	67	59	53	49	50	53	56

	D 12	J 13	F	M	A	M	J	J	A	S	O	N	D	J 14	F	M	A	M	J	J	A	S	O	N	D	J 15	F	M	A	M	J	J	A	S	O	N
Price per Sq Ft	183	164	158	186	213	202	198	216	201	210	192	206	232	203	186	174	231	210	223	214	228	222	218	190	204	236	180	201	226	229	224	234	207	208	205	203
3 Mo. Roll Avg			168	169	186	200	204	205	205	209	201	203	210	214	207	188	197	205	221	216	222	221	223	210	204	210	207	206	202	219	226	229	222	216	207	205

	D 12	J 13	F	M	A	M	J	J	A	S	O	N	D	J 14	F	M	A	M	J	J	A	S	O	N	D	J 15	F	M	A	M	J	J	A	S	O	N
Sale to List Price	0.944	0.955	0.962	0.965	0.965	0.963	0.964	0.961	0.969	0.968	0.964	0.971	0.966	0.960	0.983	0.998	0.977	0.967	0.974	0.970	0.973	0.962	0.966	0.967	0.958	0.952	0.955	0.963	0.966	0.970	0.971	0.973	0.964	0.962	0.962	0.971
3 Mo. Roll Avg			0.954	0.961	0.964	0.964	0.964	0.963	0.965	0.966	0.967	0.968	0.967	0.966	0.970	0.980	0.986	0.981	0.973	0.970	0.972	0.968	0.967	0.965	0.964	0.959	0.955	0.957	0.961	0.966	0.969	0.971	0.969	0.966	0.963	0.965

	D 12	J 13	F	M	A	M	J	J	A	S	O	N	D	J 14	F	M	A	M	J	J	A	S	O	N	D	J 15	F	M	A	M	J	J	A	S	O	N
New Listings	45	108	112	159	183	198	128	148	128	164	119	59	46	99	111	160	174	188	172	164	123	150	114	76	59	87	144	189	199	211	194	188	132	135	106	66
Inventory	333	313	315	309	340	367	333	329	326	369	322	280	254	253	279	294	336	378	389	388	363	383	385	348	313	309	317	320	358	412	425	414	388	379	348	292
Sales	63	49	43	70	108	114	117	123	138	98	76	67	101	40	39	62	83	96	126	122	113	83	80	61	70	36	49	86	104	98	147	140	125	107	83	69

(000's)	D 12	J 13	F	M	A	M	J	J	A	S	O	N	D	J 14	F	M	A	M	J	J	A	S	O	N	D	J 15	F	M	A	M	J	J	A	S	O	N
Avg Sale Price	361	269	286	362	426	397	391	384	309	381	374	316	440	306	325	303	403	372	397	375	458	404	358	310	369	393	314	333	397	460	415	456	375	407	384	330
3 Mo. Roll Avg			305	305	358	395	405	391	361	358	355	357	377	354	357	311	344	359	391	381	410	412	407	357	346	357	359	347	348	397	424	444	415	413	389	374

© 2015 Coldwell Banker Real Estate LLC. All Rights Reserved. Coldwell Banker Residential Brokerage fully supports the principles of the Fair Housing Act and the Equal Opportunity Act. Coldwell Banker Residential Brokerage is operated by a subsidiary of NRT LLC. Coldwell Banker and the Coldwell Banker Logo are registered service marks owned by Coldwell Banker Real Estate LLC.

Based on information from Midwest Real Estate Data LLC for the period 12/1/2012 through 11/30/2015. Due to MLS reporting methods and allowable reporting policy, this data is only informational and may not be completely accurate. Therefore, Coldwell Banker Residential Brokerage does not guarantee the data accuracy. Data maintained by the MLS's may not reflect all real estate activity in the market.

