

MLS Area: Lincolnshire



ART WILSON
Broker, Realtor
847-363-1599
www.NorthShoreHomesOnline.com
Art.Wilson@cbexchange.com



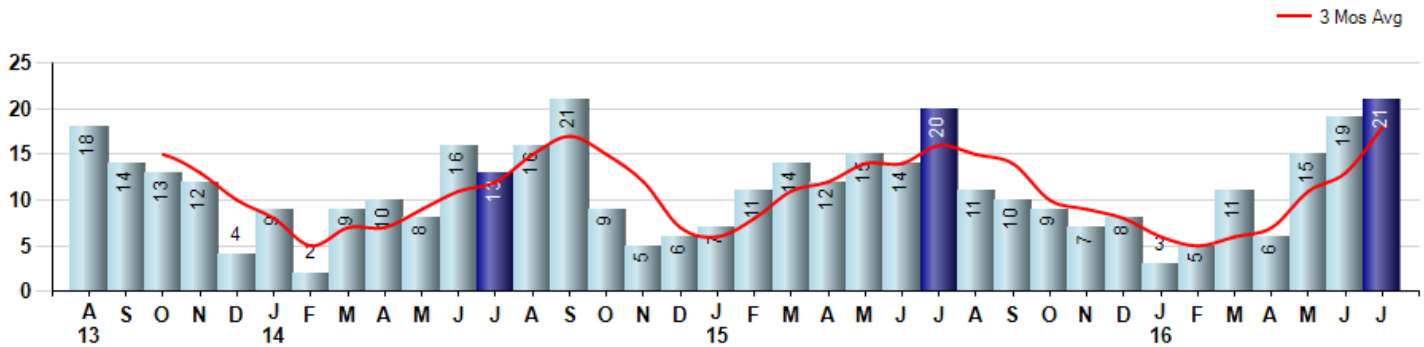
Price Range: \$0 to \$999,999,000 | Properties: Single Family Home, Townhome, Condo

Market Profile & Trends Overview	Month	Trending Versus*:				YTD	Trending Versus*:	
		LM	L3M	PYM	LY		PriorYTD	PriorYear
Median List Price of all Current Listings	\$571,250	↑		↑				
Average List Price of all Current Listings	\$683,701	↑		↑				
July Median Sales Price	\$483,000	↓	↓	↑	↓	\$486,000	↑	↓
July Average Sales Price	\$555,690	↓	↓	↑	→	\$533,725	↑	↓
Total Properties Currently for Sale (Inventory)	66	↓		↓				
July Number of Properties Sold	21	↑		↑		80	↓	
July Average Days on Market (Solds)	39	↑	↓	↑	↓	55	↓	↓
July Month's Supply of Inventory	3.1	↓	↓	↓	↓	9.3	↑	↑
July Sale Price vs List Price Ratio	95.6%	→	→	↓	↑	95.5%	→	→

* LM=Last Month / L3M=Last 3 Months / PYM=Same Month Prior Year / LY=Last Year / YTD = Year-to-date

Property Sales

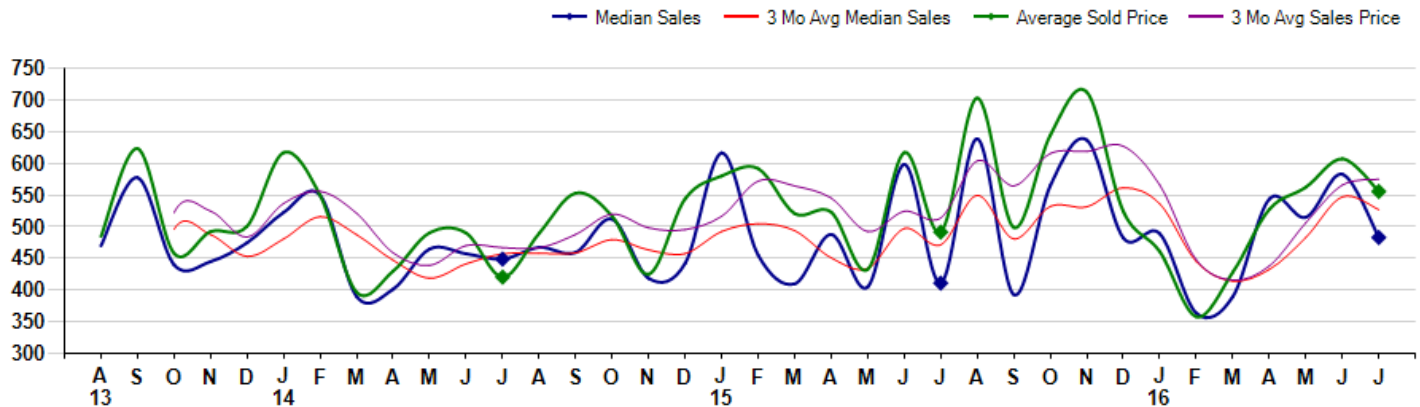
July Property sales were 21, up 5.0% from 20 in July of 2015 and 10.5% higher than the 19 sales last month. July 2016 sales were at their highest level compared to July of 2015 and 2014. July YTD sales of 80 are running -14.0% behind last year's year-to-date sales of 93.



Prices

The Median Sales Price in July was \$483,000, up 17.5% from \$411,000 in July of 2015 and down -17.2% from \$583,000 last month. The Average Sales Price in July was \$555,690, up 13.0% from \$491,570 in July of 2015 and down -8.5% from \$607,342 last month. July 2016 ASP was at highest level compared to July of 2015 and 2014.

Median means Middle (the same # of properties sold above and below Median) (000's)



MLS Area: Lincolnshire



ART WILSON
 Broker, Realtor
 847-363-1599
 www.NorthShoreHomesOnline.com
 Art.Wilson@cbexchange.com



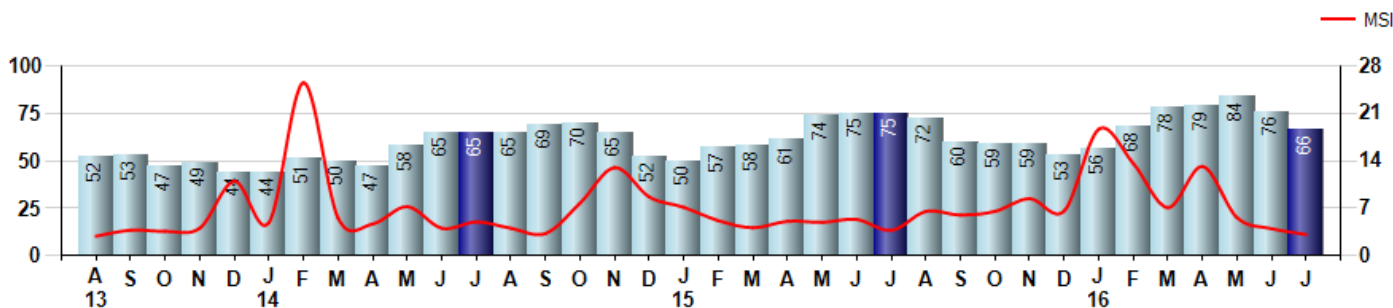
Price Range: \$0 to \$999,999,000 | Properties: Single Family Home, Townhome, Condo

Inventory & MSI

The Total Inventory of Properties available for sale as of July was 66, down -13.2% from 76 last month and down -12.0% from 75 in July of last year. July 2016 Inventory was at a mid range compared to July of 2015 and 2014.

A comparatively lower MSI is more beneficial for sellers while a higher MSI is better for buyers. The July 2016 MSI of 3.1 months was at its lowest level compared with July of 2015 and 2014.

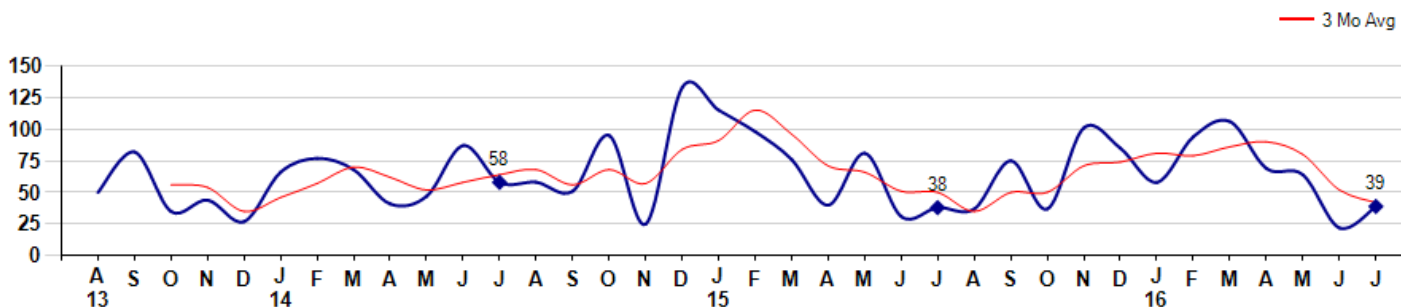
MSI is the # of months needed to sell all of the Inventory at the monthly Sales Pace



Market Time

The average Days On Market(DOM) shows how many days the average Property is on the Market before it sells. An upward trend in DOM tends to indicate a move towards more of a Buyer's market, a downward trend a move towards more of a Seller's market. The DOM for July was 39, up 77.3% from 22 days last month and up 2.6% from 38 days in July of last year. The July 2016 DOM was at a mid range compared with July of 2015 and 2014.

Average Days on Market(Listing to Contract) for properties sold during the month



© 2016 Coldwell Banker Real Estate LLC. All Rights Reserved. Coldwell Banker Residential Brokerage fully supports the principles of the Fair Housing Act and the Equal Opportunity Act. Coldwell Banker Residential Brokerage is operated by a subsidiary of NRT LLC. Coldwell Banker and the Coldwell Banker Logo are registered service marks owned by Coldwell Banker Real Estate LLC.

Based on information from Midwest Real Estate Data LLC for the period 8/1/2013 through 7/31/2016. Due to MLS reporting methods and allowable reporting policy, this data is only informational and may not be completely accurate. Therefore, Coldwell Banker Residential Brokerage does not guarantee the data accuracy. Data maintained by the MLS's may not reflect all real estate activity in the market.



MLS Area: Lincolnshire



ART WILSON
 Broker, Realtor
 847-363-1599
www.NorthShoreHomesOnline.com
Art.Wilson@cbexchange.com

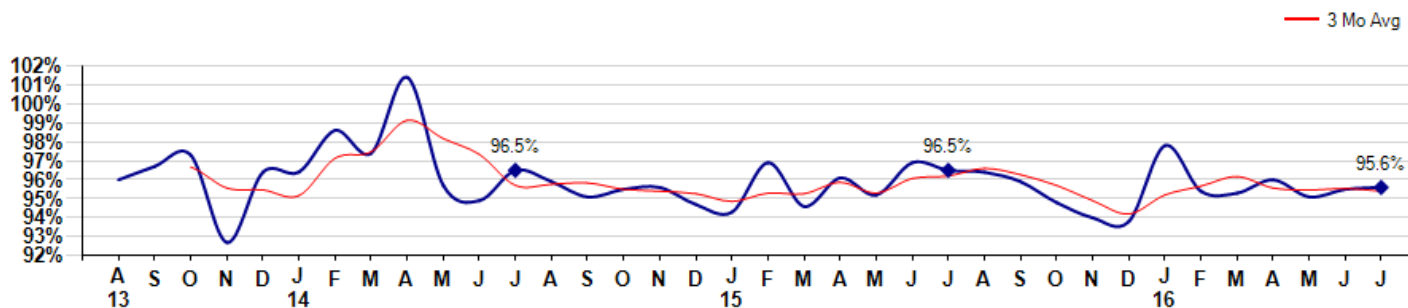


Price Range: \$0 to \$999,999,000 | Properties: Single Family Home, Townhome, Condo

Selling Price vs Listing Price

The Selling Price vs Listing Price reveals the average amount that Sellers are agreeing to come down from their list price. The lower the ratio is below 100% the more of a Buyer's market exists, a ratio at or above 100% indicates more of a Seller's market. The July 2016 Selling Price vs List Price of 95.6% was up from 95.5% last month and down from 96.5% in July of last year.

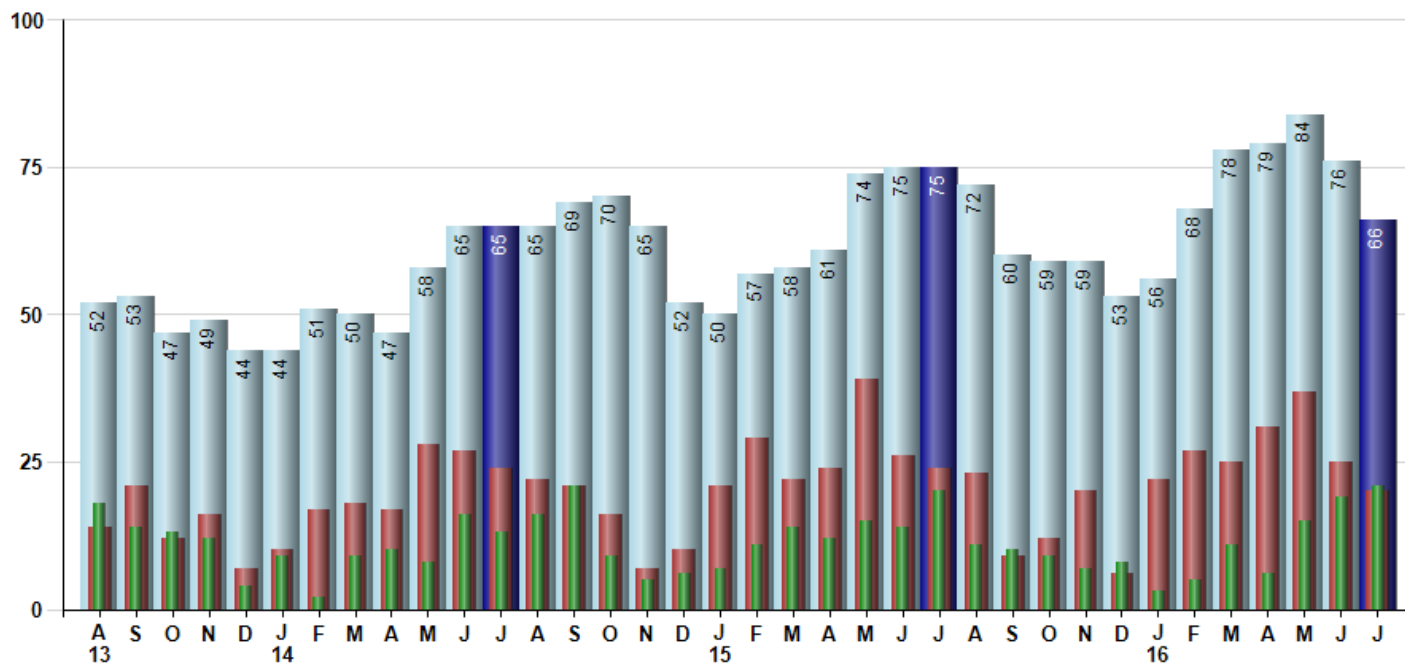
Avg Selling Price divided by Avg Listing Price for sold properties during the month



Inventory / New Listings / Sales

This last view of the market combines monthly inventory of Properties for sale along with New Listings and Sales. The graph shows the basic annual seasonality of the market as well as the relationship between these items. The number of New Listings in July 2016 was 20, down -20.0% from 25 last month and down -16.7% from 24 in July of last year.

Inventory (light blue), New Listings (red), Sold (green)



© 2016 Coldwell Banker Real Estate LLC. All Rights Reserved. Coldwell Banker Residential Brokerage fully supports the principles of the Fair Housing Act and the Equal Opportunity Act. Coldwell Banker Residential Brokerage is operated by a subsidiary of NRT LLC. Coldwell Banker and the Coldwell Banker Logo are registered service marks owned by Coldwell Banker Real Estate LLC.

Based on information from Midwest Real Estate Data LLC for the period 8/1/2013 through 7/31/2016. Due to MLS reporting methods and allowable reporting policy, this data is only informational and may not be completely accurate. Therefore, Coldwell Banker Residential Brokerage does not guarantee the data accuracy. Data maintained by the MLS's may not reflect all real estate activity in the market.



MARKET ACTION REPORT

July 2016

MLS Area: Lincolnshire



ART WILSON
 Broker, Realtor
 847-363-1599
 www.NorthShoreHomesOnline.com
 Art.Wilson@cbexchange.com



Price Range: \$0 to \$999,999,000 | Properties: Single Family Home, Townhome, Condo

	A 13	S	O	N	D	J 14	F	M	A	M	J	J	A	S	O	N	D	J 15	F	M	A	M	J	J	A	S	O	N	D	J 16	F	M	A	M	J	J
Homes Sold	18	14	13	12	4	9	2	9	10	8	16	13	16	21	9	5	6	7	11	14	12	15	14	20	11	10	9	7	8	3	5	11	6	15	19	21
3 Mo. Roll Avg			15	13	10	8	5	7	7	9	11	12	15	17	15	12	7	6	8	11	12	14	14	16	15	14	10	9	8	6	5	6	7	11	13	18

(000's)	A 13	S	O	N	D	J 14	F	M	A	M	J	J	A	S	O	N	D	J 15	F	M	A	M	J	J	A	S	O	N	D	J 16	F	M	A	M	J	J
Median Sale Price	470	578	440	445	475	523	390	402	465	458	449	468	460	512	419	443	617	455	410	488	405	599	411	639	393	565	637	483	489	364	390	544	515	583	483	
3 Mo. Roll Avg			496	488	453	481	516	488	447	419	441	457	458	459	480	463	458	493	505	494	451	434	497	472	549	481	532	532	562	536	445	414	433	483	547	527

	A 13	S	O	N	D	J 14	F	M	A	M	J	J	A	S	O	N	D	J 15	F	M	A	M	J	J	A	S	O	N	D	J 16	F	M	A	M	J	J
Inventory	52	53	47	49	44	44	51	50	47	58	65	65	65	69	70	65	52	50	57	58	61	74	75	75	72	60	59	59	53	56	68	78	79	84	76	66
MSI	3	4	4	4	11	5	26	6	5	7	4	5	4	3	8	13	9	7	5	4	5	5	5	4	7	6	7	8	7	19	14	7	13	6	4	3

	A 13	S	O	N	D	J 14	F	M	A	M	J	J	A	S	O	N	D	J 15	F	M	A	M	J	J	A	S	O	N	D	J 16	F	M	A	M	J	J
Days On Market	50	82	35	44	27	66	77	68	41	47	87	58	58	51	95	25	133	115	98	76	40	81	31	38	37	75	37	101	85	58	94	106	69	64	22	39
3 Mo. Roll Avg			56	54	35	46	57	70	62	52	58	64	68	56	68	57	84	91	115	96	71	66	51	50	35	50	50	71	74	81	79	86	90	80	52	42

	A 13	S	O	N	D	J 14	F	M	A	M	J	J	A	S	O	N	D	J 15	F	M	A	M	J	J	A	S	O	N	D	J 16	F	M	A	M	J	J
Price per Sq Ft	184	190	170	167	193	176	174	167	174	180	174	162	187	198	186	164	179	185	200	178	197	164	207	174	210	171	215	220	187	213	189	170	202	187	206	187
3 Mo. Roll Avg			181	176	177	179	181	172	174	176	172	174	182	190	183	176	176	188	188	192	180	189	182	197	185	199	202	207	207	196	191	187	186	198	193	

	A 13	S	O	N	D	J 14	F	M	A	M	J	J	A	S	O	N	D	J 15	F	M	A	M	J	J	A	S	O	N	D	J 16	F	M	A	M	J	J
Sale to List Price	0.960	0.967	0.973	0.927	0.964	0.964	0.986	0.974	1.014	0.957	0.949	0.965	0.959	0.951	0.955	0.956	0.947	0.943	0.969	0.946	0.961	0.952	0.969	0.965	0.964	0.959	0.948	0.940	0.938	0.978	0.954	0.953	0.960	0.951	0.955	0.956
3 Mo. Roll Avg			0.967	0.956	0.955	0.952	0.971	0.975	0.991	0.982	0.973	0.957	0.958	0.958	0.955	0.954	0.953	0.949	0.953	0.953	0.959	0.953	0.961	0.962	0.966	0.963	0.957	0.949	0.942	0.952	0.957	0.962	0.956	0.955	0.955	0.954

	A 13	S	O	N	D	J 14	F	M	A	M	J	J	A	S	O	N	D	J 15	F	M	A	M	J	J	A	S	O	N	D	J 16	F	M	A	M	J	J
New Listings	14	21	12	16	7	10	17	18	17	28	27	24	22	21	16	7	10	21	29	22	24	39	26	24	23	9	12	20	6	22	27	25	31	37	25	20
Inventory	52	53	47	49	44	44	51	50	47	58	65	65	65	69	70	65	52	50	57	58	61	74	75	75	72	60	59	59	53	56	68	78	79	84	76	66
Sales	18	14	13	12	4	9	2	9	10	8	16	13	16	21	9	5	6	7	11	14	12	15	14	20	11	10	9	7	8	3	5	11	6	15	19	21

(000's)	A 13	S	O	N	D	J 14	F	M	A	M	J	J	A	S	O	N	D	J 15	F	M	A	M	J	J	A	S	O	N	D	J 16	F	M	A	M	J	J
Avg Sale Price	485	624	458	492	501	617	550	397	430	491	490	420	490	553	517	425	544	580	592	521	523	433	617	492	703	499	645	713	524	461	358	428	528	563	607	556
3 Mo. Roll Avg			522	525	484	537	556	521	459	439	470	467	467	488	520	498	495	517	572	564	545	492	524	514	604	565	616	619	627	566	448	416	438	506	566	575

© 2016 Coldwell Banker Real Estate LLC. All Rights Reserved. Coldwell Banker Residential Brokerage fully supports the principles of the Fair Housing Act and the Equal Opportunity Act. Coldwell Banker Residential Brokerage is operated by a subsidiary of NRT LLC. Coldwell Banker and the Coldwell Banker Logo are registered service marks owned by Coldwell Banker Real Estate LLC.

Based on information from Midwest Real Estate Data LLC for the period 8/1/2013 through 7/31/2016. Due to MLS reporting methods and allowable reporting policy, this data is only informational and may not be completely accurate. Therefore, Coldwell Banker Residential Brokerage does not guarantee the data accuracy. Data maintained by the MLS's may not reflect all real estate activity in the market.

