

MLS Area: Winnetka



ART WILSON
 Broker, Realtor
 847-363-1599
 Art.Wilson@cbexchange.com



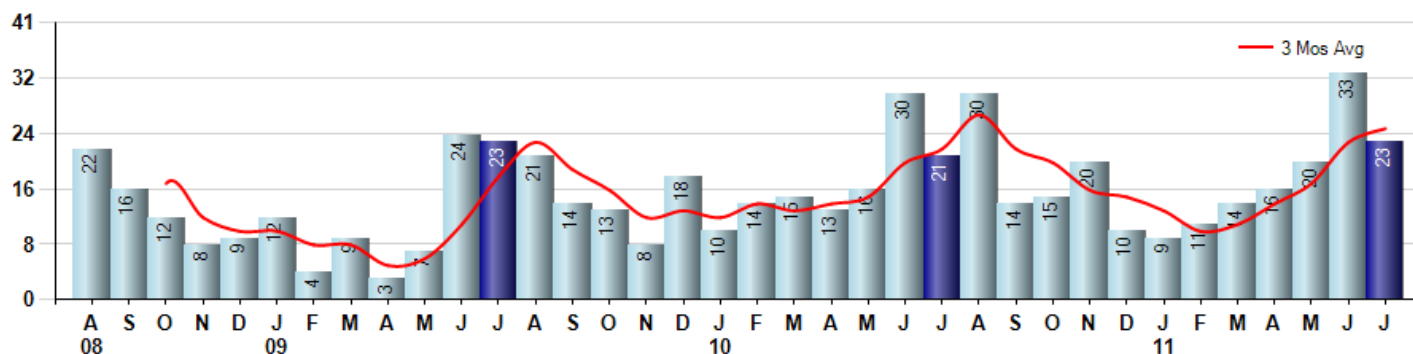
Price Range: ALL | Properties: Single Family Home, Townhome, Condo

Market Profile & Trends Overview	Month	Trending Versus*:				YTD	Trending Versus*:	
		LM	L3M	PYM	LY		PriorYTD	PriorYear
Median List Price of all Current Listings	\$1,395,000	↑		↑				
Average List Price of all Current Listings	\$1,817,537	↑		↓				
July Median Sales Price	\$980,000	↓	↓	↓	↓	\$966,500	↓	↓
July Average Sales Price	\$1,252,962	↔	↓	↑	↓	\$1,259,770	↔	↓
Total Properties Currently for Sale (Inventory)	188	↓		↓				
July Number of Properties Sold	23	↓		↑		126	↑	
July Average Days on Market (Solds)	65	↓	↓	↓	↓	129	↑	
July Month's Supply of Inventory	8.2	↑	↔	↓	↓	12.1	↓	↑
July Sale Price vs List Price Ratio	91.4%	↑	↑	↑	↑	87.2%	↑	↑

* LM=Last Month / L3M=Last 3 Months / PYM=Same Month Prior Year / LY=Last Year / YTD = Year-to-date

Property Sales

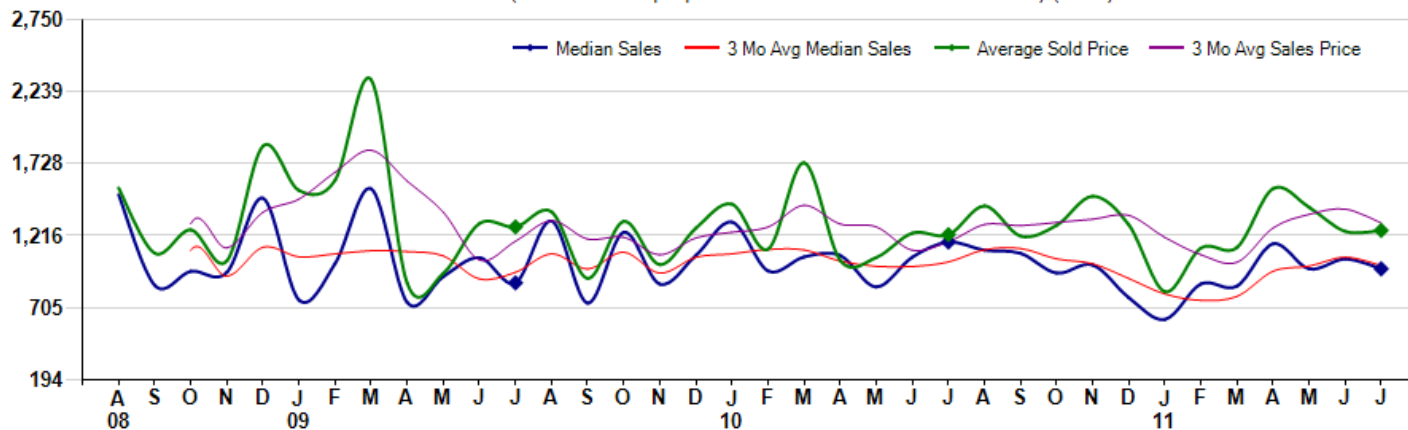
July Property sales were 23, up 9.5% from 21 in July of 2010 and -30.3% lower than the 33 sales last month. July 2011 sales were at a mid level compared to July of 2010 and 2009. July YTD sales of 126 are running 5.9% ahead of last year's year-to-date sales of 119.



Prices

The Median Sales Price in July was \$980,000, down -16.2% from \$1,170,000 in July of 2010 and down -6.7% from \$1,050,000 last month. The Average Sales Price in July was \$1,252,962, up 2.5% from \$1,222,381 in July of 2010 and up 0.6% from \$1,245,735 last month. July 2011 ASP was at a mid range compared to July of 2010 and 2009.

Median means Middle (the same # of properties sold above and below Median) (000's)



MLS Area: Winnetka



ART WILSON
 Broker, Realtor
 847-363-1599
 Art.Wilson@cbexchange.com



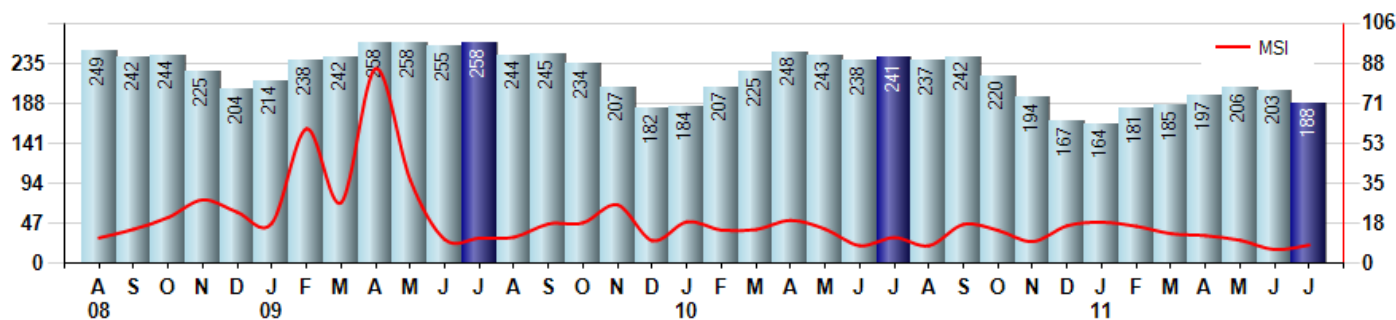
Price Range: ALL | Properties: Single Family Home, Townhome, Condo

Inventory & MSI

The Total Inventory of Properties available for sale as of July was 188, down -7.4% from 203 last month and down -22.0% from 241 in July of last year. July 2011 Inventory was at the lowest level compared to July of 2010 and 2009.

A comparatively lower MSI is more beneficial for sellers while a higher MSI is better for buyers. The July 2011 MSI of 8.2 months was at its lowest level compared with July of 2010 and 2009.

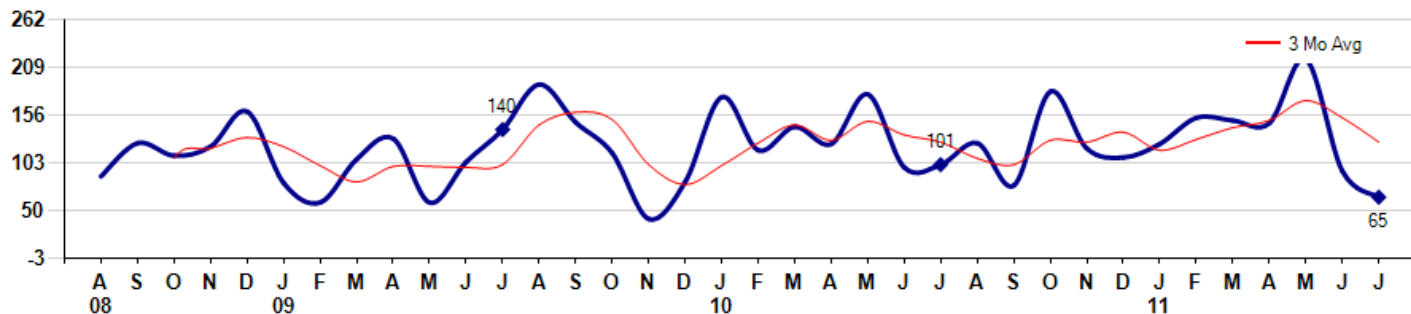
MSI is the # of months needed to sell all of the Inventory at the monthly Sales Pace



Market Time

The average Days On Market (DOM) shows how many days the average Property is on the Market before it sells. An upward trend in DOM tends to indicate a move towards more of a Buyer's market, a downward trend a move towards more of a Seller's market. The DOM for July was 65, down -30.9% from 94 days last month and down -35.6% from 101 days in July of last year. The July 2011 DOM was at its lowest level compared with July of 2010 and 2009.

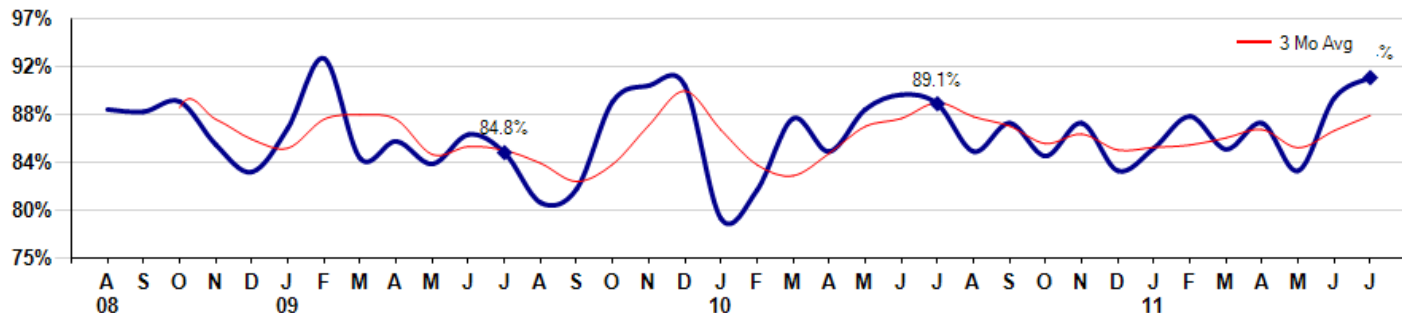
Average Days on Market (Listing to Contract) for properties sold during the month



Selling Price vs Original Listing Price

The Selling Price vs Original Listing Price reveals the average amount that Sellers are agreeing to come down from their original list price. The lower the ratio is below 100% the more of a Buyer's market exists, a ratio at or above 100% indicates more of a Seller's market. The July 2011 Selling Price vs Original List Price of 91.4% was up from 89.6% last month and up from 89.1% in July of last year.

Avg Selling Price divided by Avg Listing Price for sold properties during the month



Based on information from Midwest Real Estate Data LLC for the period 8/1/2008 through 7/31/2011. Due to MLS reporting methods and allowable reporting policy, this data is only informational and may not be completely accurate. Therefore, Coldwell Banker Residential Brokerage does not guarantee the data accuracy. Data maintained by the MLS's may not reflect all real estate activity in the market.



MLS Area: Winnetka



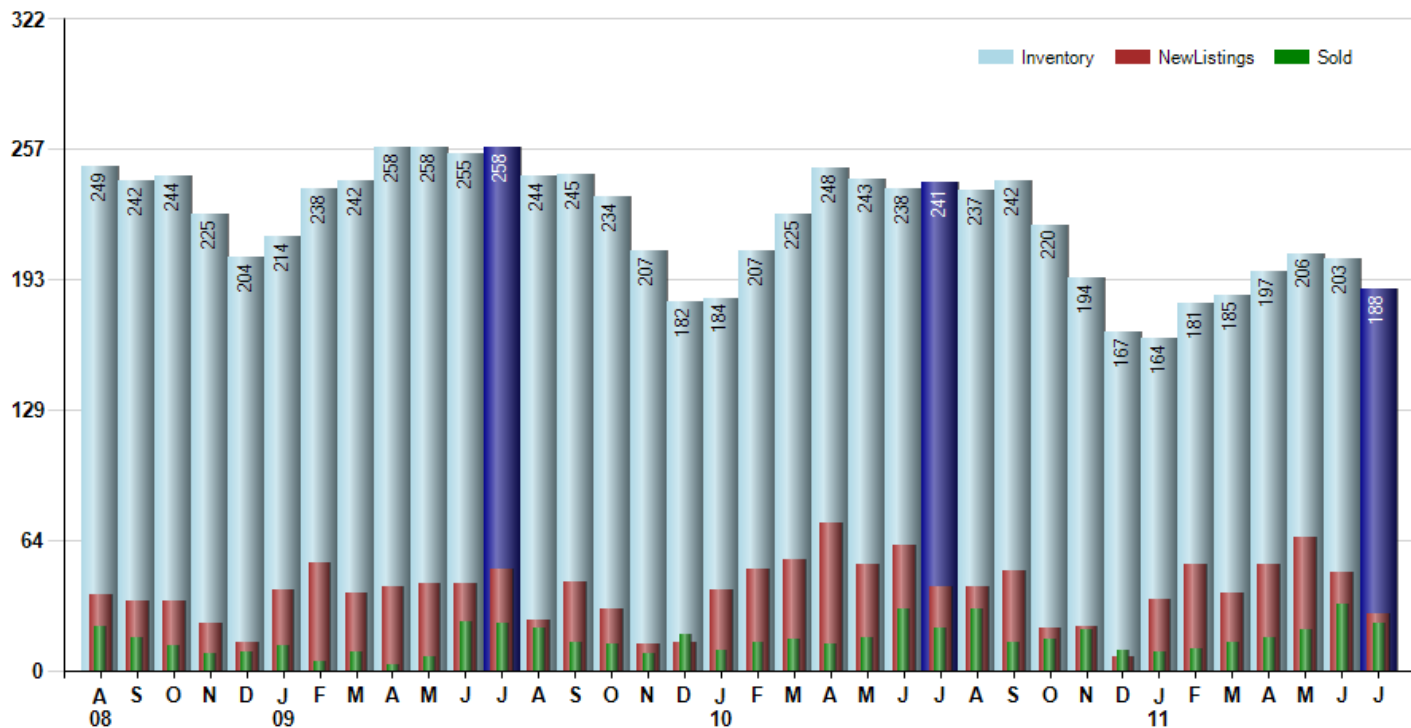
ART WILSON
 Broker, Realtor
 847-363-1599
 Art.Wilson@cbexchange.com



Price Range: ALL | Properties: Single Family Home, Townhome, Condo

Inventory / New Listings / Sales

This last view of the market combines monthly inventory of Properties for sale along with New Listings and Sales. The graph shows the basic annual seasonality of the market as well as the relationship between these items. The number of New Listings in July 2011 was 28, down -41.7% from 48 last month and down -31.7% from 41 in July of last year.



Based on information from Midwest Real Estate Data LLC for the period 8/1/2008 through 7/31/2011. Due to MLS reporting methods and allowable reporting policy, this data is only informational and may not be completely accurate. Therefore, Coldwell Banker Residential Brokerage does not guarantee the data accuracy. Data maintained by the MLS's may not reflect all real estate activity in the market.



MARKET ACTION REPORT

July 2011

MLS Area: Winnetka



ART WILSON
 Broker, Realtor
 847-363-1599
 Art.Wilson@cbexchange.com



Price Range: ALL | Properties: Single Family Home, Townhome, Condo

	A 08	S	O	N	D	J 09	F	M	A	M	J	J	A	S	O	N	D	J 10	F	M	A	M	J	J	A	S	O	N	D	J 11	F	M	A	M	J	J
Homes Sold	22	16	12	8	9	12	4	9	3	7	24	23	21	14	13	8	18	10	14	15	13	16	30	21	30	14	15	20	10	9	11	14	16	20	33	23
3 Mo. Roll Avg			17	12	10	10	8	8	5	6	11	18	23	19	16	12	13	12	14	13	14	15	20	22	27	22	20	16	15	13	10	11	14	17	23	25

	(000's) A 08	S	O	N	D	J 09	F	M	A	M	J	J	A	S	O	N	D	J 10	F	M	A	M	J	J	A	S	O	N	D	J 11	F	M	A	M	J	J
Median Sale Price	1,509	863	963	955	1,483	758	1,018	1,550	740	925	1,060	880	1,320	736	1,240	871	1,075	1,313	965	1,065	1,075	851	1,064	1,170	1,113	1,090	950	1,008	775	620	873	858	1,159	980	1,050	980
3 Mo. Roll Avg			1,111	927	1,133	1,065	1,086	1,108	1,103	1,072	908	955	1,087	979	1,099	949	1,062	1,086	1,118	1,114	1,035	997	997	1,028	1,115	1,124	1,051	1,016	911	801	756	783	963	999	1,063	1,003

	A 08	S	O	N	D	J 09	F	M	A	M	J	J	A	S	O	N	D	J 10	F	M	A	M	J	J	A	S	O	N	D	J 11	F	M	A	M	J	J
Inventory	249	242	244	225	204	214	238	242	258	258	255	258	244	245	234	207	182	184	207	225	248	243	238	241	237	242	220	194	167	164	181	185	197	206	203	188
MSI	11	15	20	28	23	18	60	27	86	37	11	11	12	18	18	26	10	18	15	15	19	15	8	11	8	17	15	10	17	18	16	13	12	10	6	8

	A 08	S	O	N	D	J 09	F	M	A	M	J	J	A	S	O	N	D	J 10	F	M	A	M	J	J	A	S	O	N	D	J 11	F	M	A	M	J	J
Days On Market	88	125	111	121	160	81	59	107	130	59	104	140	190	148	114	41	82	176	117	143	124	179	98	101	125	78	182	119	109	124	153	150	147	218	94	65
3 Mo. Roll Avg			108	119	131	121	100	82	99	99	98	101	145	159	151	101	79	100	125	145	128	149	134	126	108	101	128	126	137	117	129	142	150	172	153	126

	A 08	S	O	N	D	J 09	F	M	A	M	J	J	A	S	O	N	D	J 10	F	M	A	M	J	J	A	S	O	N	D	J 11	F	M	A	M	J	J
Price per Sq Ft	406	456	386	343	0	266	253	517	0	339	316	294	362	234	384	483	343	195	245	416	218	365	282	323	321	339	282	332	242	204	278	263	341	306	358	307
3 Mo. Roll Avg			416	395	243	203	173	345	257	285	218	316	324	297	327	367	403	340	261	285	293	333	288	323	309	328	314	318	285	259	241	248	294	303	335	324

	A 08	S	O	N	D	J 09	F	M	A	M	J	J	A	S	O	N	D	J 10	F	M	A	M	J	J	A	S	O	N	D	J 11	F	M	A	M	J	J
Sale to List Price	0.886	0.884	0.893	0.855	0.831	0.870	0.931	0.843	0.858	0.838	0.864	0.848	0.804	0.816	0.893	0.907	0.907	0.790	0.815	0.878	0.849	0.886	0.899	0.891	0.849	0.874	0.845	0.874	0.832	0.852	0.880	0.851	0.874	0.832	0.896	0.914
3 Mo. Roll Avg			0.888	0.877	0.860	0.852	0.877	0.881	0.877	0.846	0.853	0.850	0.839	0.823	0.838	0.872	0.902	0.868	0.837	0.828	0.847	0.871	0.878	0.892	0.880	0.871	0.856	0.864	0.850	0.853	0.855	0.861	0.868	0.852	0.867	0.881

	A 08	S	O	N	D	J 09	F	M	A	M	J	J	A	S	O	N	D	J 10	F	M	A	M	J	J	A	S	O	N	D	J 11	F	M	A	M	J	J
New Listings	37	34	34	23	14	40	53	38	41	43	43	50	25	44	30	13	14	40	50	55	73	52	62	41	41	49	21	22	7	35	52	38	52	66	48	28
Inventory	249	242	244	225	204	214	238	242	258	258	255	258	244	245	234	207	182	184	207	225	248	243	238	241	237	242	220	194	167	164	181	185	197	206	203	188
Sales	22	16	12	8	9	12	4	9	3	7	24	23	21	14	13	8	18	10	14	15	13	16	30	21	30	14	15	20	10	9	11	14	16	20	33	23

	(000's) A 08	S	O	N	D	J 09	F	M	A	M	J	J	A	S	O	N	D	J 10	F	M	A	M	J	J	A	S	O	N	D	J 11	F	M	A	M	J	J
Avg Sale Price	1,554	1,091	1,258	1,036	1,853	1,537	1,609	2,324	877	948	1,302	1,278	1,385	911	1,317	1,010	1,269	1,440	1,120	1,735	1,041	1,061	1,234	1,222	1,427	1,213	1,289	1,496	1,294	818	1,129	1,133	1,551	1,417	1,246	1,253
3 Mo. Roll Avg			1,301	1,128	1,382	1,475	1,666	1,823	1,603	1,383	1,042	1,176	1,322	1,192	1,205	1,080	1,199	1,240	1,277	1,432	1,299	1,279	1,112	1,172	1,295	1,287	1,310	1,333	1,360	1,203	1,080	1,026	1,271	1,367	1,405	1,305

Based on information from Midwest Real Estate Data LLC for the period 8/1/2008 through 7/31/2011. Due to MLS reporting methods and allowable reporting policy, this data is only informational and may not be completely accurate. Therefore, Coldwell Banker Residential Brokerage does not guarantee the data accuracy. Data maintained by the MLS's may not reflect all real estate activity in the market.

