

MLS Area: Winnetka



ART WILSON
 Broker, Realtor
 847-363-1599
 www.NorthShoreHomesOnline.com
 Art.Wilson@cbexchange.com



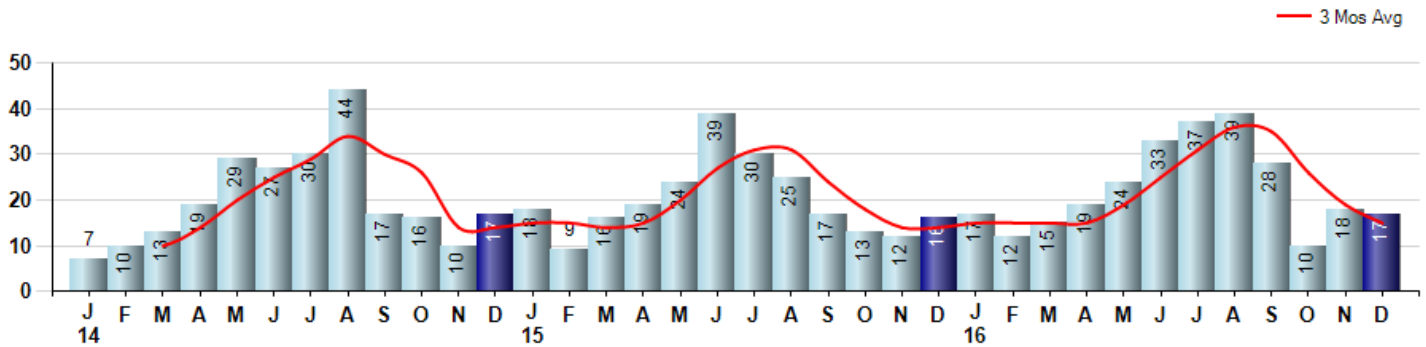
Price Range: \$0 to \$999,999,000 | Properties: Single Family Home, Townhome, Condo

Market Profile & Trends Overview	Month	Trending Versus*:				YTD	Trending Versus*:	
		LM	L3M	PYM	LY		PriorYTD	PriorYear
Median List Price of all Current Listings	\$1,199,745	↓		↓				
Average List Price of all Current Listings	\$1,969,599	↑		↑				
December Median Sales Price	\$1,353,750	↑	↑	↑	↑	\$1,075,000	↔	↑
December Average Sales Price	\$1,542,897	↑	↑	↑	↑	\$1,295,658	↔	↔
Total Properties Currently for Sale (Inventory)	114	↓		↓				
December Number of Properties Sold	17	↓		↑		269	↑	
December Average Days on Market (Solds)	117	↑	↑	↑	↑	75	↓	↓
December Month's Supply of Inventory	6.7	↓	↓	↓	↓	9.6	↔	↔
December Sale Price vs List Price Ratio	92.9%	↓	↔	↓	↓	94.1%	↓	↓

* LM=Last Month / L3M=Last 3 Months / PYM=Same Month Prior Year / LY=Last Year / YTD = Year-to-date

Property Sales

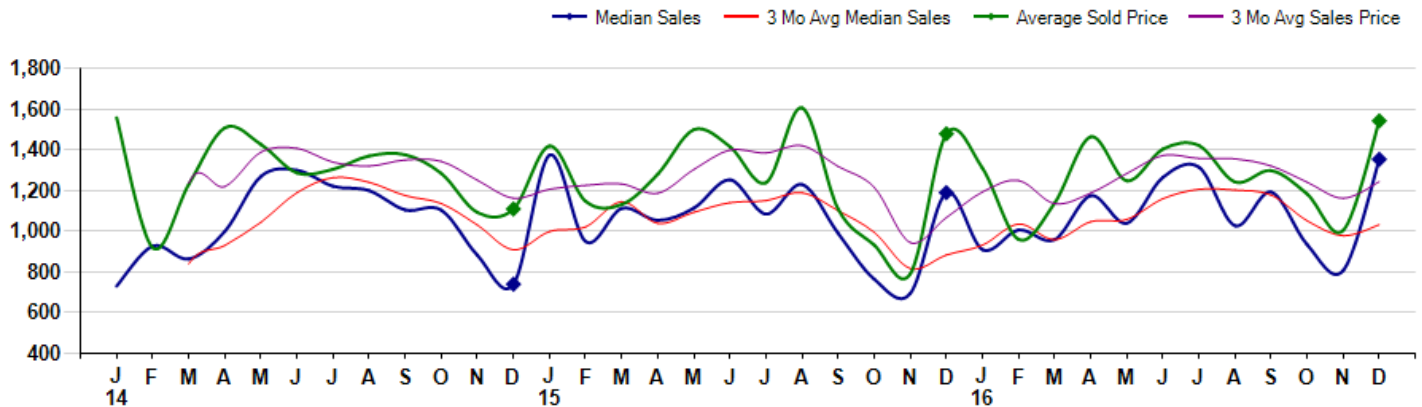
December Property sales were 17, up 6.3% from 16 in December of 2015 and -5.6% lower than the 18 sales last month. December 2016 sales were at a mid level compared to December of 2015 and 2014. December YTD sales of 269 are running 13.0% ahead of last year's year-to-date sales of 238.



Prices

The Median Sales Price in December was \$1,353,750, up 13.8% from \$1,190,000 in December of 2015 and up 67.6% from \$807,500 last month. The Average Sales Price in December was \$1,542,897, up 4.3% from \$1,479,125 in December of 2015 and up 53.5% from \$1,004,917 last month. December 2016 ASP was at highest level compared to December of 2015 and 2014.

Median means Middle (the same # of properties sold above and below Median) (000's)



MLS Area: Winnetka



ART WILSON
 Broker, Realtor
 847-363-1599
 www.NorthShoreHomesOnline.com
 Art.Wilson@cbexchange.com



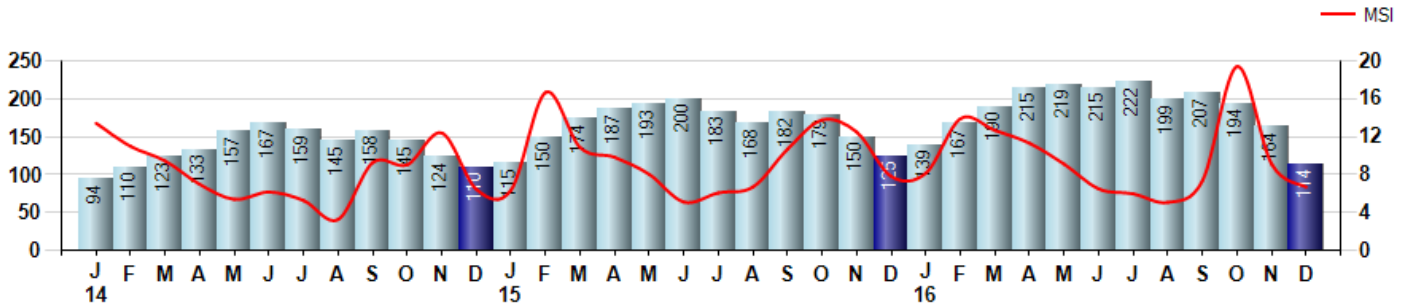
Price Range: \$0 to \$999,999,000 | Properties: Single Family Home, Townhome, Condo

Inventory & MSI

The Total Inventory of Properties available for sale as of December was 114, down -30.5% from 164 last month and down -8.8% from 125 in December of last year. December 2016 Inventory was at a mid range compared to December of 2015 and 2014.

A comparatively lower MSI is more beneficial for sellers while a higher MSI is better for buyers. The December 2016 MSI of 6.7 months was at a mid range compared with December of 2015 and 2014.

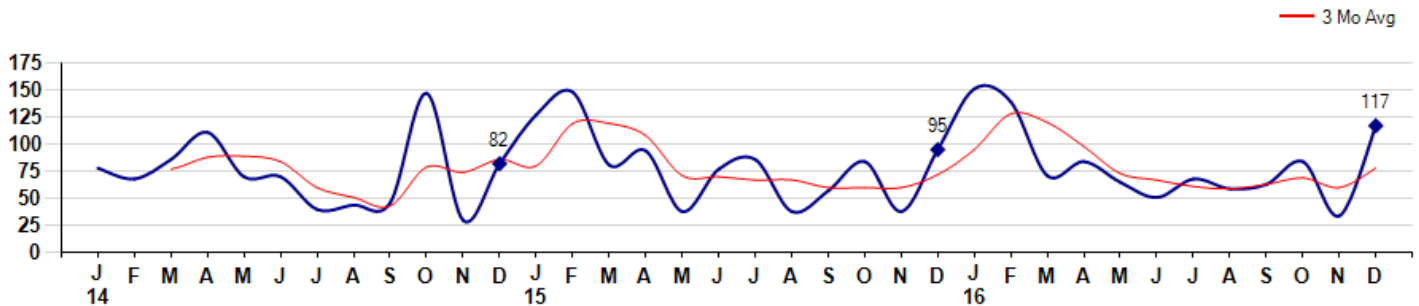
MSI is the # of months needed to sell all of the Inventory at the monthly Sales Pace



Market Time

The average Days On Market(DOM) shows how many days the average Property is on the Market before it sells. An upward trend in DOM tends to indicate a move towards more of a Buyer's market, a downward trend a move towards more of a Seller's market. The DOM for December was 117, up 244.1% from 34 days last month and up 23.2% from 95 days in December of last year. The December 2016 DOM was at its highest level compared with December of 2015 and 2014.

Average Days on Market(Listing to Contract) for properties sold during the month



MLS Area: Winnetka



ART WILSON
 Broker, Realtor
 847-363-1599
 www.NorthShoreHomesOnline.com
 Art.Wilson@cbexchange.com

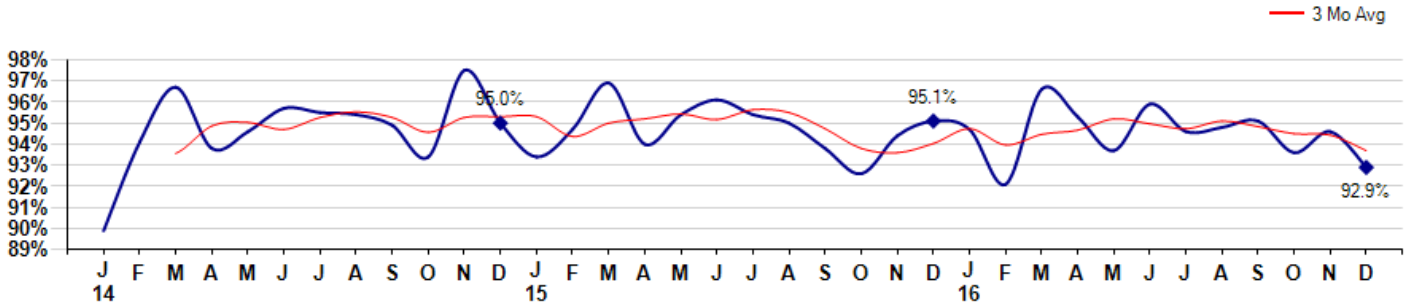


Price Range: \$0 to \$999,999,000 | Properties: Single Family Home, Townhome, Condo

Selling Price vs Listing Price

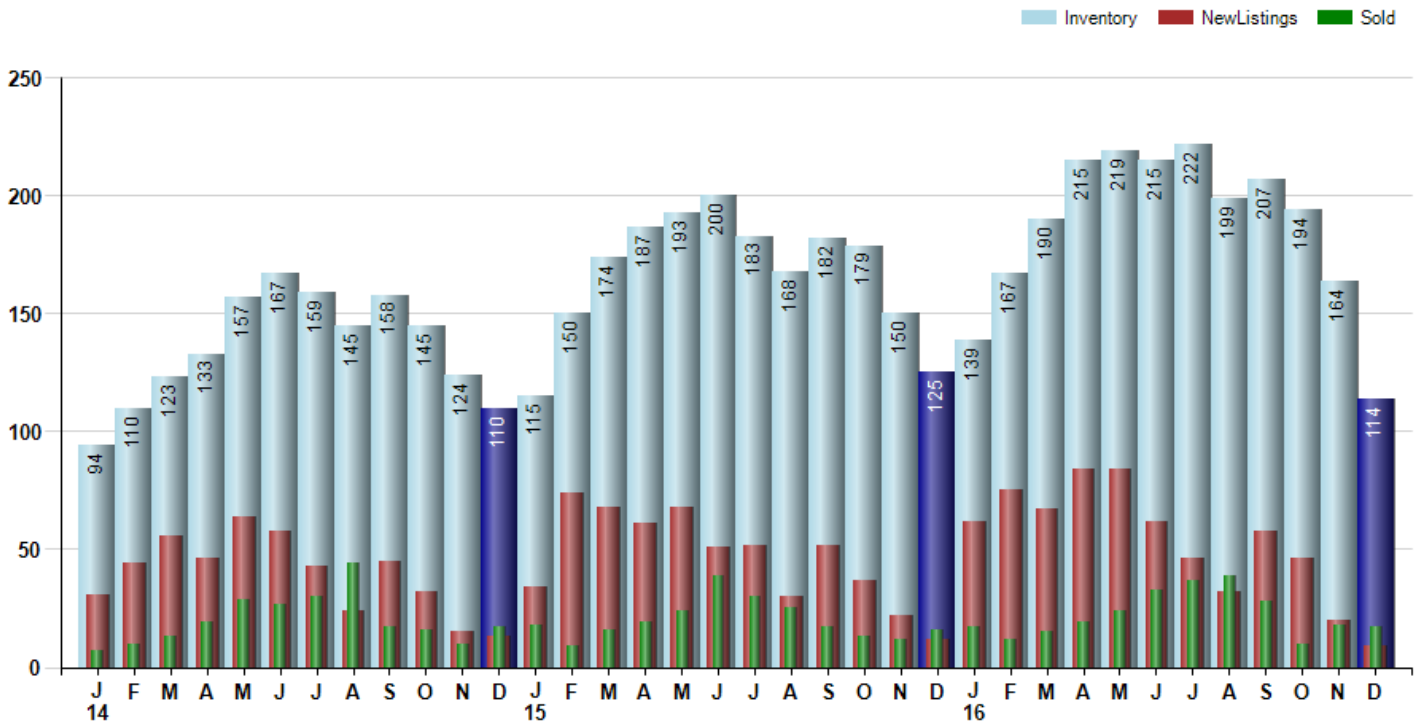
The Selling Price vs Listing Price reveals the average amount that Sellers are agreeing to come down from their list price. The lower the ratio is below 100% the more of a Buyer's market exists, a ratio at or above 100% indicates more of a Seller's market. The December 2016 Selling Price vs List Price of 92.9% was down from 94.6% last month and down from 95.1% in December of last year.

Avg Selling Price divided by Avg Listing Price for sold properties during the month



Inventory / New Listings / Sales

This last view of the market combines monthly inventory of Properties for sale along with New Listings and Sales. The graph shows the basic annual seasonality of the market as well as the relationship between these items. The number of New Listings in December 2016 was 9, down -55.0% from 20 last month and down -25.0% from 12 in December of last year.



© 2017 Coldwell Banker Real Estate LLC. All Rights Reserved. Coldwell Banker Residential Brokerage fully supports the principles of the Fair Housing Act and the Equal Opportunity Act. Coldwell Banker Residential Brokerage is operated by a subsidiary of NRT LLC. Coldwell Banker and the Coldwell Banker Logo are registered service marks owned by Coldwell Banker Real Estate LLC.

Based on information from Midwest Real Estate Data LLC for the period 1/1/2014 through 12/31/2016. Due to MLS reporting methods and allowable reporting policy, this data is only informational and may not be completely accurate. Therefore, Coldwell Banker Residential Brokerage does not guarantee the data accuracy. Data maintained by the MLS's may not reflect all real estate activity in the market.



MARKET ACTION REPORT

December 2016

MLS Area: Winnetka



ART WILSON
 Broker, Realtor
 847-363-1599
 www.NorthShoreHomesOnline.com
 Art.Wilson@cbexchange.com



Price Range: \$0 to \$999,999,000 | Properties: Single Family Home, Townhome, Condo

	J 14	F	M	A	M	J	J	A	S	O	N	D	J 15	F	M	A	M	J	J	A	S	O	N	D	J 16	F	M	A	M	J	J	A	S	O	N	D
Homes Sold	7	10	13	19	29	27	30	44	17	16	10	17	18	9	16	19	24	39	30	25	17	13	12	16	17	12	15	19	24	33	37	39	28	10	18	17
3 Mo. Roll Avg			10	14	20	25	29	34	30	26	14	14	15	15	14	15	20	27	31	31	24	18	14	14	15	15	15	19	25	31	36	35	26	19	15	

(000's)	J 14	F	M	A	M	J	J	A	S	O	N	D	J 15	F	M	A	M	J	J	A	S	O	N	D	J 16	F	M	A	M	J	J	A	S	O	N	D
Median Sale Price	730	928	864	1,000	1,270	1,300	1,222	1,200	1,105	1,104	883	740	1,375	950	1,113	1,054	1,114	1,254	1,085	1,230	990	765	695	1,190	910	1,007	959	1,175	1,040	1,265	1,315	1,027	1,193	935	808	1,354
3 Mo. Roll Avg			841	931	1,045	1,190	1,264	1,241	1,176	1,136	1,031	909	999	1,022	1,146	1,039	1,094	1,141	1,151	1,189	1,102	995	817	883	932	1,036	959	1,047	1,058	1,160	1,207	1,202	1,178	1,052	978	1,032

	J 14	F	M	A	M	J	J	A	S	O	N	D	J 15	F	M	A	M	J	J	A	S	O	N	D	J 16	F	M	A	M	J	J	A	S	O	N	D
Inventory	94	110	123	133	157	167	159	145	158	145	124	110	115	150	174	187	193	200	183	168	182	179	150	125	139	167	190	215	219	215	222	199	207	194	164	114
MSI	13	11	9	7	5	6	5	3	9	9	12	6	6	17	11	10	8	5	6	7	11	14	13	8	8	14	13	11	9	7	6	5	7	19	9	7

	J 14	F	M	A	M	J	J	A	S	O	N	D	J 15	F	M	A	M	J	J	A	S	O	N	D	J 16	F	M	A	M	J	J	A	S	O	N	D
Days On Market	78	68	86	111	70	70	40	44	46	147	30	82	127	148	81	94	38	77	86	38	57	84	38	95	151	139	71	84	65	51	68	59	63	84	34	117
3 Mo. Roll Avg			77	88	89	84	60	51	43	79	74	86	80	119	119	108	71	70	67	67	60	60	60	72	95	128	120	98	73	67	61	59	63	69	60	78

	J 14	F	M	A	M	J	J	A	S	O	N	D	J 15	F	M	A	M	J	J	A	S	O	N	D	J 16	F	M	A	M	J	J	A	S	O	N	D
Price per Sq Ft	427	261	348	317	389	342	295	350	358	290	328	342	369	256	297	377	408	363	345	360	354	328	238	381	341	273	308	414	304	325	344	351	358	312	280	299
3 Mo. Roll Avg			345	309	351	349	342	329	334	333	325	320	346	322	307	310	361	383	372	356	353	347	307	316	320	332	307	332	342	348	324	340	351	340	317	297

	J 14	F	M	A	M	J	J	A	S	O	N	D	J 15	F	M	A	M	J	J	A	S	O	N	D	J 16	F	M	A	M	J	J	A	S	O	N	D
Sale to List Price	0.899	0.941	0.967	0.938	0.946	0.957	0.955	0.954	0.949	0.934	0.975	0.950	0.934	0.947	0.969	0.940	0.954	0.961	0.954	0.950	0.938	0.926	0.944	0.951	0.947	0.921	0.966	0.953	0.937	0.959	0.946	0.948	0.951	0.936	0.946	0.929
3 Mo. Roll Avg			0.936	0.949	0.950	0.947	0.953	0.955	0.953	0.946	0.953	0.953	0.953	0.944	0.950	0.952	0.954	0.952	0.956	0.955	0.947	0.938	0.936	0.940	0.947	0.940	0.945	0.947	0.952	0.950	0.947	0.951	0.948	0.945	0.944	0.937

	J 14	F	M	A	M	J	J	A	S	O	N	D	J 15	F	M	A	M	J	J	A	S	O	N	D	J 16	F	M	A	M	J	J	A	S	O	N	D
New Listings	31	44	56	46	64	58	43	24	45	32	15	13	34	74	68	61	68	51	52	30	52	37	22	12	62	75	67	84	84	62	46	32	58	46	20	9
Inventory	94	110	123	133	157	167	159	145	158	145	124	110	115	150	174	187	193	200	183	168	182	179	150	125	139	167	190	215	219	215	222	199	207	194	164	114
Sales	7	10	13	19	29	27	30	44	17	16	10	17	18	9	16	19	24	39	30	25	17	13	12	16	17	12	15	19	24	33	37	39	28	10	18	17

(000's)	J 14	F	M	A	M	J	J	A	S	O	N	D	J 15	F	M	A	M	J	J	A	S	O	N	D	J 16	F	M	A	M	J	J	A	S	O	N	D
Avg Sale Price	1,558	919	1,231	1,509	1,427	1,287	1,305	1,370	1,376	1,284	1,093	1,110	1,419	1,148	1,131	1,281	1,500	1,416	1,239	1,607	1,110	932	791	1,479	1,310	960	1,139	1,464	1,248	1,404	1,422	1,242	1,298	1,183	1,005	1,543
3 Mo. Roll Avg			1,236	1,219	1,389	1,407	1,339	1,321	1,351	1,344	1,251	1,162	1,207	1,226	1,233	1,187	1,304	1,399	1,385	1,421	1,319	1,216	944	1,068	1,193	1,250	1,136	1,188	1,284	1,372	1,358	1,356	1,321	1,241	1,162	1,244

© 2017 Coldwell Banker Real Estate LLC. All Rights Reserved. Coldwell Banker Residential Brokerage fully supports the principles of the Fair Housing Act and the Equal Opportunity Act. Coldwell Banker Residential Brokerage is operated by a subsidiary of NRT LLC. Coldwell Banker and the Coldwell Banker Logo are registered service marks owned by Coldwell Banker Real Estate LLC.

Based on information from Midwest Real Estate Data LLC for the period 1/1/2014 through 12/31/2016. Due to MLS reporting methods and allowable reporting policy, this data is only informational and may not be completely accurate. Therefore, Coldwell Banker Residential Brokerage does not guarantee the data accuracy. Data maintained by the MLS's may not reflect all real estate activity in the market.

