

MLS Area: Glenview / Golf



ART WILSON

Broker, Realtor

847-363-1599

www.NorthShoreHomesOnline.com

Art.Wilson@cbexchange.com



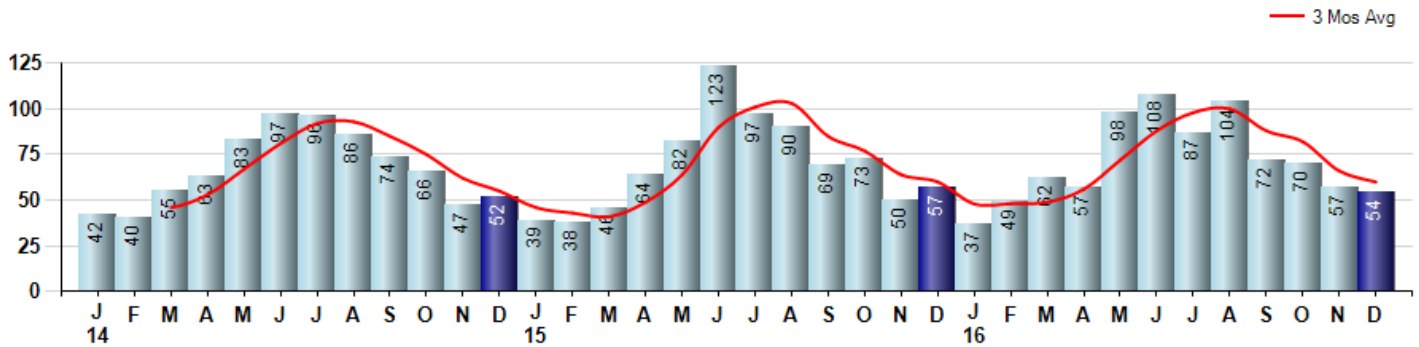
Price Range: \$0 to \$999,999,000 | Properties: Single Family Home, Townhome, Condo

Market Profile & Trends Overview	Month	Trending Versus*:				YTD	Trending Versus*:	
		LM	L3M	PYM	LY		PriorYTD	PriorYear
Median List Price of all Current Listings	\$593,735	↑		↑				
Average List Price of all Current Listings	\$723,301	↑		↑				
December Median Sales Price	\$477,500	↑	↑	↑	↑	\$440,000	↔	↑
December Average Sales Price	\$613,699	↑	↑	↑	↑	\$517,510	↔	↔
Total Properties Currently for Sale (Inventory)	270	↓		↓				
December Number of Properties Sold	54	↓		↓		855	↑	
December Average Days on Market (Solds)	61	↑	↑	↑	↑	51	↑	↑
December Month's Supply of Inventory	5.0	↓	↓	↑	↓	5.2	↑	↑
December Sale Price vs List Price Ratio	96.0%	↑	↑	↓	↓	95.7%	↓	↓

* LM=Last Month / L3M=Last 3 Months / PYM=Same Month Prior Year / LY=Last Year / YTD = Year-to-date

Property Sales

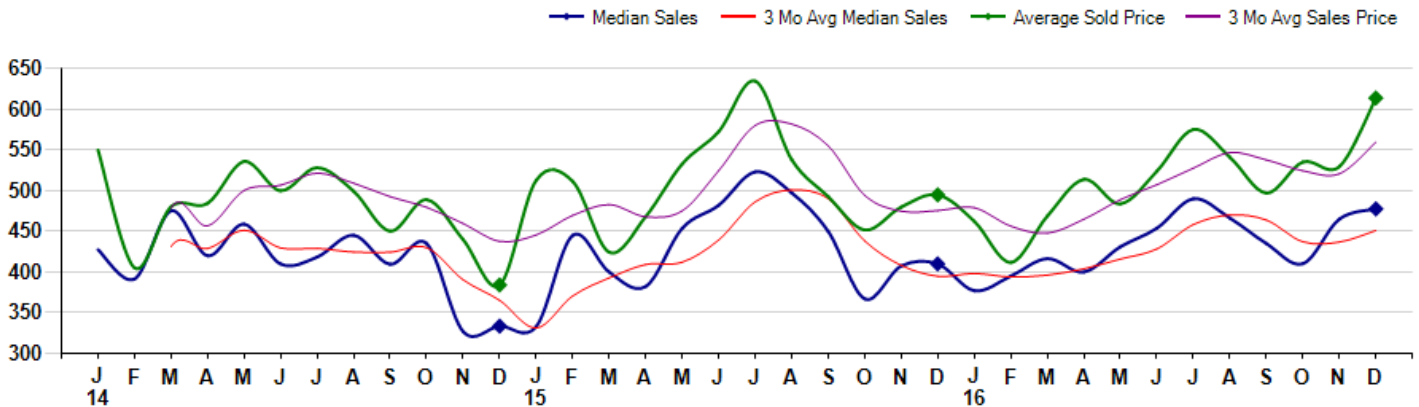
December Property sales were 54, down -5.3% from 57 in December of 2015 and -5.3% lower than the 57 sales last month. December 2016 sales were at a mid level compared to December of 2015 and 2014. December YTD sales of 855 are running 3.3% ahead of last year's year-to-date sales of 828.



Prices

The Median Sales Price in December was \$477,500, up 16.5% from \$410,000 in December of 2015 and up 2.7% from \$465,000 last month. The Average Sales Price in December was \$613,699, up 24.0% from \$494,778 in December of 2015 and up 15.9% from \$529,463 last month. December 2016 ASP was at highest level compared to December of 2015 and 2014.

Median means Middle (the same # of properties sold above and below Median) (000's)



MLS Area: Glenview / Golf



ART WILSON

Broker, Realtor

847-363-1599

www.NorthShoreHomesOnline.com

Art.Wilson@cbexchange.com



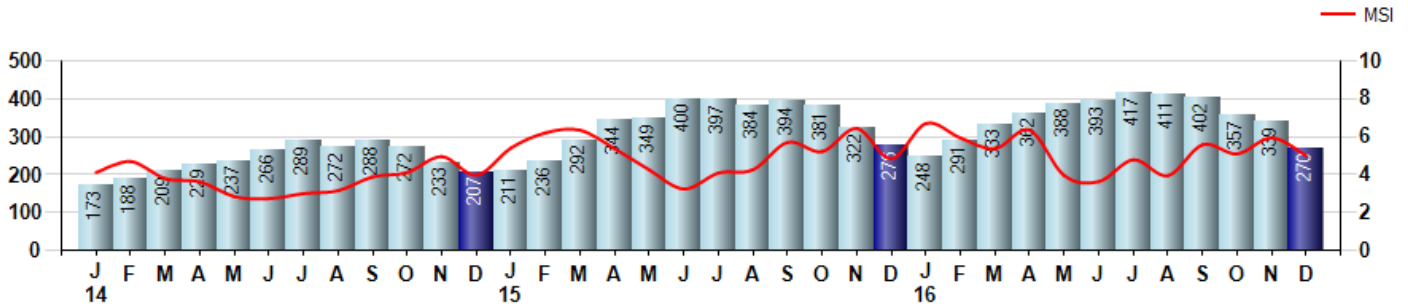
Price Range: \$0 to \$999,999,000 | Properties: Single Family Home, Townhome, Condo

Inventory & MSI

The Total Inventory of Properties available for sale as of December was 270, down -20.4% from 339 last month and down -2.2% from 276 in December of last year. December 2016 Inventory was at a mid range compared to December of 2015 and 2014.

A comparatively lower MSI is more beneficial for sellers while a higher MSI is better for buyers. The December 2016 MSI of 5.0 months was at its highest level compared with December of 2015 and 2014.

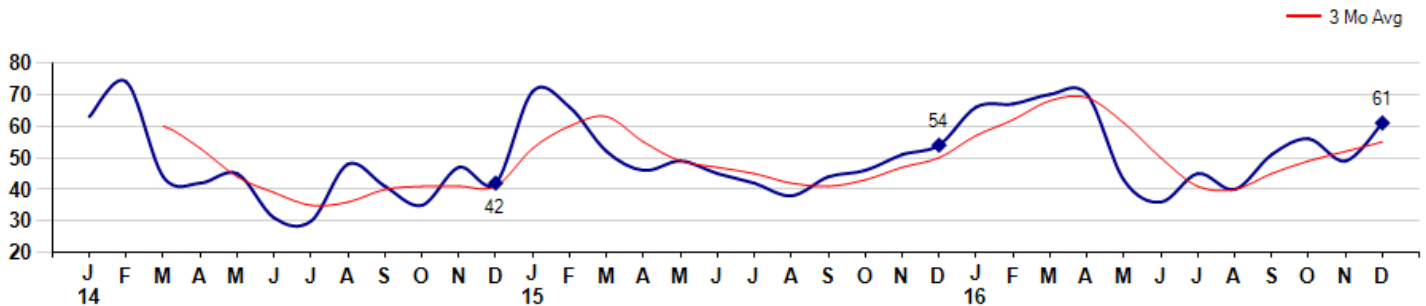
MSI is the # of months needed to sell all of the Inventory at the monthly Sales Pace



Market Time

The average Days On Market(DOM) shows how many days the average Property is on the Market before it sells. An upward trend in DOM tends to indicate a move towards more of a Buyer's market, a downward trend a move towards more of a Seller's market. The DOM for December was 61, up 24.5% from 49 days last month and up 13.0% from 54 days in December of last year. The December 2016 DOM was at its highest level compared with December of 2015 and 2014.

Average Days on Market(Listing to Contract) for properties sold during the month



MLS Area: Glenview / Golf



ART WILSON
 Broker, Realtor
 847-363-1599
 www.NorthShoreHomesOnline.com
 Art.Wilson@cbexchange.com

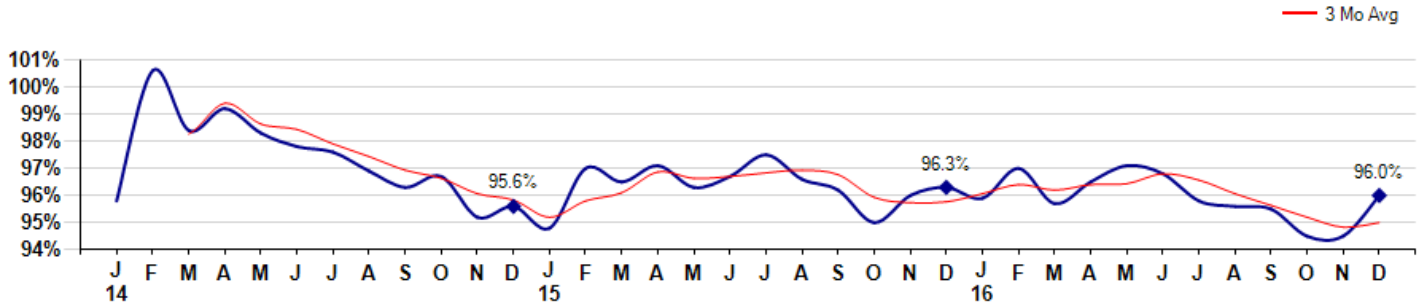


Price Range: \$0 to \$999,999,000 | Properties: Single Family Home, Townhome, Condo

Selling Price vs Listing Price

The Selling Price vs Listing Price reveals the average amount that Sellers are agreeing to come down from their list price. The lower the ratio is below 100% the more of a Buyer's market exists, a ratio at or above 100% indicates more of a Seller's market. The December 2016 Selling Price vs List Price of 96.0% was up from 94.5% last month and down from 96.3% in December of last year.

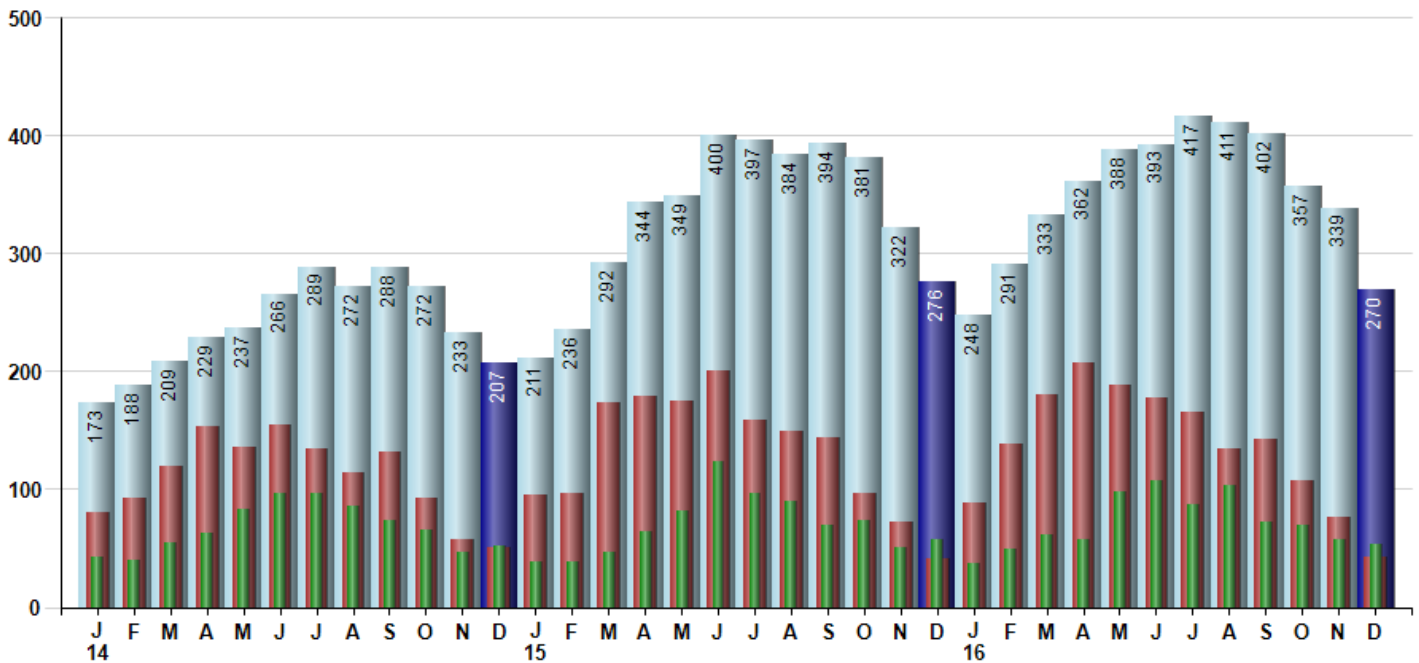
Avg Selling Price divided by Avg Listing Price for sold properties during the month



Inventory / New Listings / Sales

This last view of the market combines monthly inventory of Properties for sale along with New Listings and Sales. The graph shows the basic annual seasonality of the market as well as the relationship between these items. The number of New Listings in December 2016 was 43, down -44.2% from 77 last month and up 4.9% from 41 in December of last year.

Inventory (Light Blue), New Listings (Red), Sold (Green)



© 2017 Coldwell Banker Real Estate LLC. All Rights Reserved. Coldwell Banker Residential Brokerage fully supports the principles of the Fair Housing Act and the Equal Opportunity Act. Coldwell Banker Residential Brokerage is operated by a subsidiary of NRT LLC. Coldwell Banker and the Coldwell Banker Logo are registered service marks owned by Coldwell Banker Real Estate LLC.

Based on information from Midwest Real Estate Data LLC for the period 1/1/2014 through 12/31/2016. Due to MLS reporting methods and allowable reporting policy, this data is only informational and may not be completely accurate. Therefore, Coldwell Banker Residential Brokerage does not guarantee the data accuracy. Data maintained by the MLS's may not reflect all real estate activity in the market.



MARKET ACTION REPORT

December 2016

MLS Area: Glenview / Golf



ART WILSON
 Broker, Realtor
 847-363-1599
 www.NorthShoreHomesOnline.com
 Art.Wilson@cbexchange.com



Price Range: \$0 to \$999,999,000 | Properties: Single Family Home, Townhome, Condo

	J 14	F	M	A	M	J	J	A	S	O	N	D	J 15	F	M	A	M	J	J	A	S	O	N	D	J 16	F	M	A	M	J	J	A	S	O	N	D
Homes Sold	42	40	55	63	83	97	96	86	74	66	47	52	39	38	46	64	82	123	97	90	69	73	50	57	37	49	62	57	98	108	87	104	72	70	57	54
3 Mo. Roll Avg			46	53	67	81	92	93	85	75	62	55	46	43	41	49	64	90	101	103	85	77	64	60	48	48	49	56	72	88	98	100	88	82	66	60

(000's)	J 14	F	M	A	M	J	J	A	S	O	N	D	J 15	F	M	A	M	J	J	A	S	O	N	D	J 16	F	M	A	M	J	J	A	S	O	N	D
Median Sale Price	428	391	475	420	459	410	418	445	410	435	327	334	333	445	400	382	454	482	523	497	450	367	408	410	377	395	417	400	431	454	490	466	435	410	465	478
3 Mo. Roll Avg			431	429	451	430	429	424	424	430	391	365	331	371	393	409	412	439	486	501	490	438	408	395	398	394	396	404	416	428	458	470	464	437	437	451

	J 14	F	M	A	M	J	J	A	S	O	N	D	J 15	F	M	A	M	J	J	A	S	O	N	D	J 16	F	M	A	M	J	J	A	S	O	N	D
Inventory	173	188	209	229	237	266	289	272	288	272	233	207	211	236	292	344	349	400	397	384	394	381	322	276	248	291	333	362	388	393	417	411	402	357	339	270
MSI	4	5	4	4	3	3	3	3	4	4	5	4	5	6	6	5	4	3	4	4	6	5	6	5	7	6	5	6	4	4	5	4	6	5	6	5

	J 14	F	M	A	M	J	J	A	S	O	N	D	J 15	F	M	A	M	J	J	A	S	O	N	D	J 16	F	M	A	M	J	J	A	S	O	N	D
Days On Market	63	74	44	42	45	31	30	48	41	35	47	42	71	66	52	46	49	45	42	38	44	46	51	54	66	67	70	70	43	36	45	40	51	56	49	61
3 Mo. Roll Avg			60	53	44	39	35	36	40	41	41	41	53	60	63	55	49	47	45	42	41	43	47	50	57	62	68	69	61	50	41	40	45	49	52	55

	J 14	F	M	A	M	J	J	A	S	O	N	D	J 15	F	M	A	M	J	J	A	S	O	N	D	J 16	F	M	A	M	J	J	A	S	O	N	D
Price per Sq Ft	200	213	226	214	227	216	225	224	217	220	204	186	190	214	187	209	213	237	226	233	211	210	191	227	193	204	219	239	230	233	240	237	213	215	219	236
3 Mo. Roll Avg			213	218	222	219	223	222	220	214	203	193	197	197	203	203	220	225	232	223	218	204	209	204	208	205	221	229	234	234	237	230	222	216	223	

	J 14	F	M	A	M	J	J	A	S	O	N	D	J 15	F	M	A	M	J	J	A	S	O	N	D	J 16	F	M	A	M	J	J	A	S	O	N	D
Sale to List Price	0.958	1.006	0.984	0.992	0.983	0.978	0.976	0.969	0.963	0.967	0.952	0.956	0.948	0.970	0.965	0.971	0.963	0.967	0.975	0.966	0.962	0.950	0.960	0.963	0.959	0.970	0.957	0.965	0.971	0.968	0.958	0.956	0.955	0.945	0.960	
3 Mo. Roll Avg			0.983	0.994	0.986	0.984	0.979	0.974	0.969	0.966	0.961	0.958	0.952	0.958	0.961	0.969	0.966	0.967	0.968	0.969	0.968	0.959	0.957	0.958	0.961	0.964	0.962	0.964	0.964	0.968	0.966	0.961	0.956	0.952	0.948	0.950

	J 14	F	M	A	M	J	J	A	S	O	N	D	J 15	F	M	A	M	J	J	A	S	O	N	D	J 16	F	M	A	M	J	J	A	S	O	N	D
New Listings	81	92	119	154	136	155	134	114	132	93	58	51	95	96	174	179	175	200	159	149	144	96	72	41	89	138	180	207	188	178	165	135	142	108	77	43
Inventory	173	188	209	229	237	266	289	272	288	272	233	207	211	236	292	344	349	400	397	384	394	381	322	276	248	291	333	362	388	393	417	411	402	357	339	270
Sales	42	40	55	63	83	97	96	86	74	66	47	52	39	38	46	64	82	123	97	90	69	73	50	57	37	49	62	57	98	108	87	104	72	70	57	54

(000's)	J 14	F	M	A	M	J	J	A	S	O	N	D	J 15	F	M	A	M	J	J	A	S	O	N	D	J 16	F	M	A	M	J	J	A	S	O	N	D
Avg Sale Price	550	405	480	484	536	500	528	499	450	489	440	384	513	511	424	468	533	573	635	538	493	452	480	495	462	412	469	514	484	524	575	541	497	535	529	614
3 Mo. Roll Avg			478	457	500	507	521	509	493	479	460	438	445	469	483	468	475	524	580	582	555	494	475	475	479	456	448	465	489	507	528	547	538	524	521	559

© 2017 Coldwell Banker Real Estate LLC. All Rights Reserved. Coldwell Banker Residential Brokerage fully supports the principles of the Fair Housing Act and the Equal Opportunity Act. Coldwell Banker Residential Brokerage is operated by a subsidiary of NRT LLC. Coldwell Banker and the Coldwell Banker Logo are registered service marks owned by Coldwell Banker Real Estate LLC.

Based on information from Midwest Real Estate Data LLC for the period 1/1/2014 through 12/31/2016. Due to MLS reporting methods and allowable reporting policy, this data is only informational and may not be completely accurate. Therefore, Coldwell Banker Residential Brokerage does not guarantee the data accuracy. Data maintained by the MLS's may not reflect all real estate activity in the market.

