

## MLS Area: Lake Bluff



**ART WILSON**

Broker, Realtor

847-363-1599

www.NorthShoreHomesOnline.com

Art.Wilson@cbexchange.com



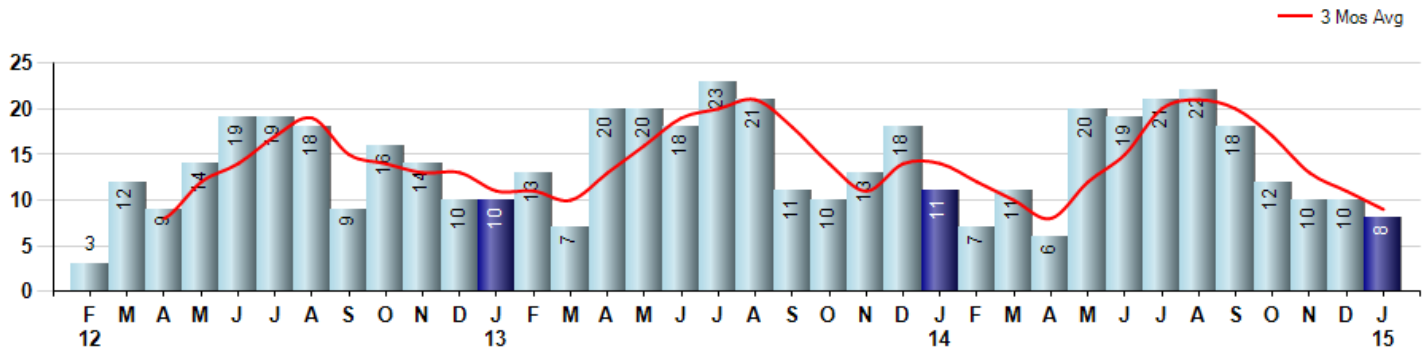
Price Range: \$0 to \$999,999,000 | Properties: Single Family Home, Townhome, Condo

Market Profile & Trends Overview	Month	Trending Versus*:				YTD	Trending Versus*:	
		LM	L3M	PYM	LY		PriorYTD	PriorYear
Median List Price of all Current Listings	\$599,450	↑		↓				
Average List Price of all Current Listings	\$1,258,375	↔		↑				
January Median Sales Price	\$435,000	↓	↑	↑	↓	\$435,000	↑	↓
January Average Sales Price	\$416,250	↓	↓	↓	↓	\$416,250	↓	↓
Total Properties Currently for Sale (Inventory)	68	↑		↑				
January Number of Properties Sold	8	↓		↓		8	↔	
January Average Days on Market (Solds)	73	↓	↑	↑	↑	73	↑	↑
January Month's Supply of Inventory	8.5	↑	↑	↑	↑	8.5	↑	↑
January Sale Price vs List Price Ratio	91.6%	↓	↑	↓	↓	94.1%	↑	↑

\* LM=Last Month / L3M=Last 3 Months / PYM=Same Month Prior Year / LY=Last Year / YTD = Year-to-date

### Property Sales

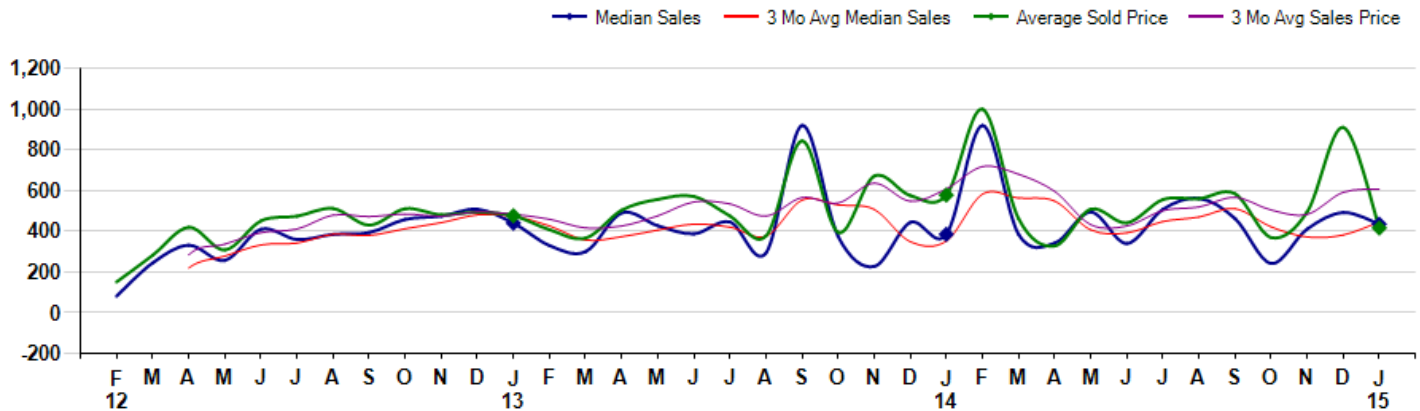
January Property sales were 8, down -27.3% from 11 in January of 2014 and -20.0% lower than the 10 sales last month. January 2015 sales were at their lowest level compared to January of 2014 and 2013. January YTD sales of 8 are running -27.3% behind last year's year-to-date sales of 11.



### Prices

The Median Sales Price in January was \$435,000, up 13.0% from \$385,000 in January of 2014 and down -11.7% from \$492,500 last month. The Average Sales Price in January was \$416,250, down -28.0% from \$578,045 in January of 2014 and down -54.3% from \$910,950 last month. January 2015 ASP was at the lowest level compared to January of 2014 and 2013.

Median means Middle (the same # of properties sold above and below Median) (000's)



## MLS Area: Lake Bluff



**ART WILSON**

Broker, Realtor

847-363-1599

www.NorthShoreHomesOnline.com

Art.Wilson@cbexchange.com



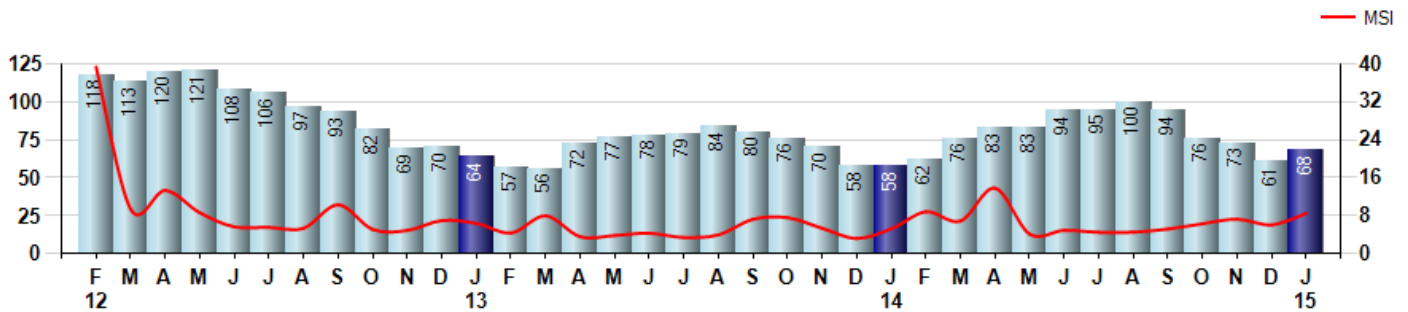
Price Range: \$0 to \$999,999,000 | Properties: Single Family Home, Townhome, Condo

### Inventory & MSI

The Total Inventory of Properties available for sale as of January was 68, up 11.5% from 61 last month and up 17.2% from 58 in January of last year. January 2015 Inventory was at highest level compared to January of 2014 and 2013.

A comparatively lower MSI is more beneficial for sellers while a higher MSI is better for buyers. The January 2015 MSI of 8.5 months was at its highest level compared with January of 2014 and 2013.

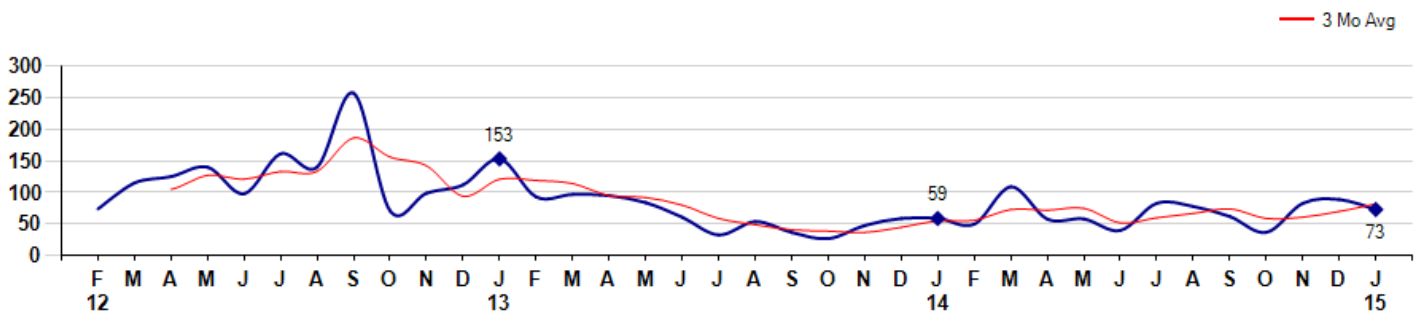
MSI is the # of months needed to sell all of the Inventory at the monthly Sales Pace



### Market Time

The average Days On Market(DOM) shows how many days the average Property is on the Market before it sells. An upward trend in DOM tends to indicate a move towards more of a Buyer's market, a downward trend a move towards more of a Seller's market. The DOM for January was 73, down -18.0% from 89 days last month and up 23.7% from 59 days in January of last year. The January 2015 DOM was at a mid range compared with January of 2014 and 2013.

Average Days on Market(Listing to Contract) for properties sold during the month



## MLS Area: Lake Bluff



**ART WILSON**  
 Broker, Realtor  
 847-363-1599  
 www.NorthShoreHomesOnline.com  
 Art.Wilson@cbexchange.com

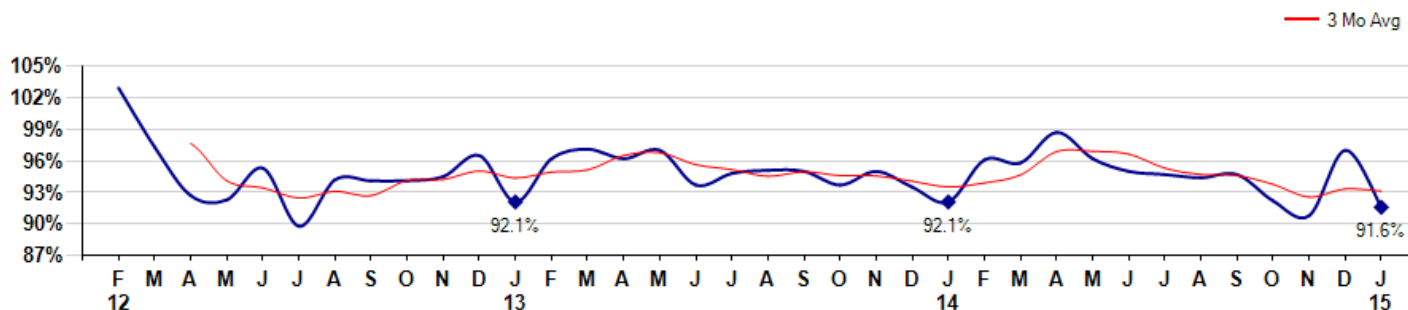


Price Range: \$0 to \$999,999,000 | Properties: Single Family Home, Townhome, Condo

### Selling Price vs Listing Price

The Selling Price vs Listing Price reveals the average amount that Sellers are agreeing to come down from their list price. The lower the ratio is below 100% the more of a Buyer's market exists, a ratio at or above 100% indicates more of a Seller's market. The January 2015 Selling Price vs List Price of 91.6% was down from 97.0% last month and down from 92.1% in January of last year.

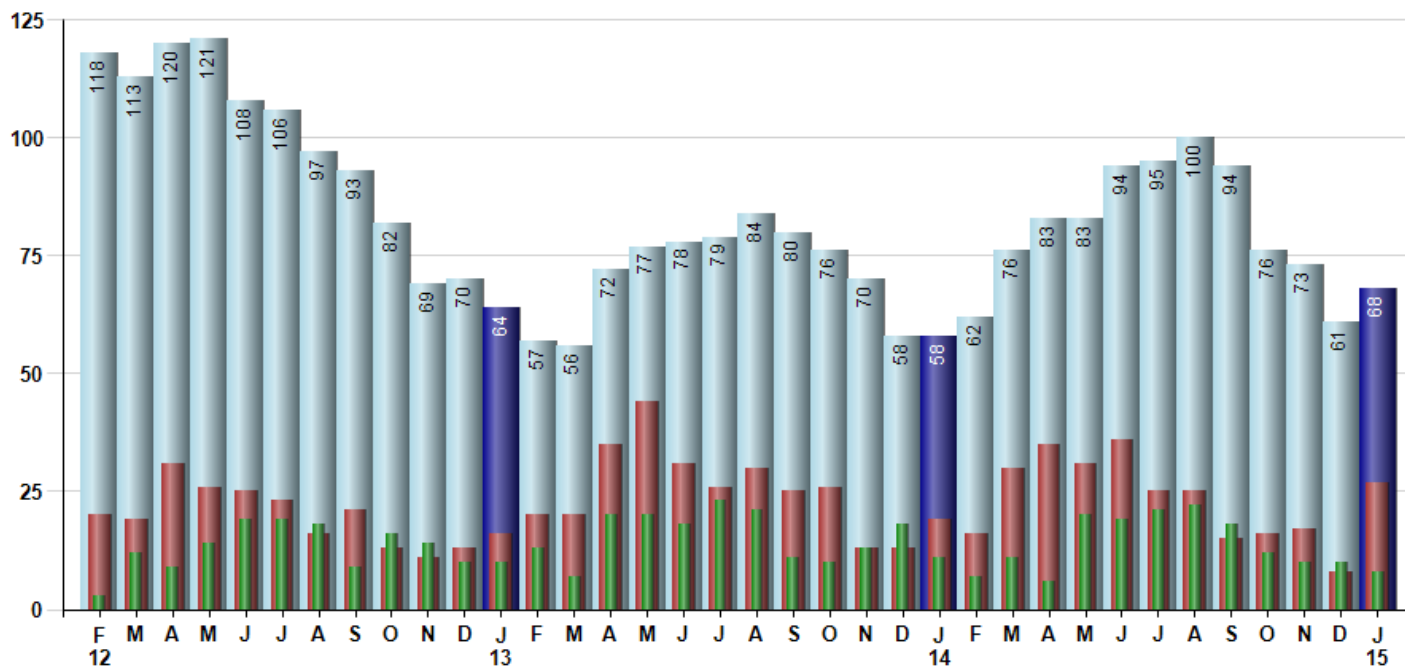
Avg Selling Price divided by Avg Listing Price for sold properties during the month



### Inventory / New Listings / Sales

This last view of the market combines monthly inventory of Properties for sale along with New Listings and Sales. The graph shows the basic annual seasonality of the market as well as the relationship between these items. The number of New Listings in January 2015 was 27, up 237.5% from 8 last month and up 42.1% from 19 in January of last year.

Inventory (light blue), New Listings (red), Sold (green)



© 2015 Coldwell Banker Real Estate LLC. All Rights Reserved. Coldwell Banker Residential Brokerage fully supports the principles of the Fair Housing Act and the Equal Opportunity Act. Coldwell Banker Residential Brokerage is operated by a subsidiary of NRT LLC. Coldwell Banker and the Coldwell Banker Logo are registered service marks owned by Coldwell Banker Real Estate LLC.

Based on information from Midwest Real Estate Data LLC for the period 2/1/2012 through 1/31/2015. Due to MLS reporting methods and allowable reporting policy, this data is only informational and may not be completely accurate. Therefore, Coldwell Banker Residential Brokerage does not guarantee the data accuracy. Data maintained by the MLS's may not reflect all real estate activity in the market.



## MLS Area: Lake Bluff



**ART WILSON**  
 Broker, Realtor  
 847-363-1599  
 www.NorthShoreHomesOnline.com  
 Art.Wilson@cbexchange.com



Price Range: \$0 to \$999,999,000 | Properties: Single Family Home, Townhome, Condo

	F 12	M	A	M	J	J	A	S	O	N	D	J 13	F	M	A	M	J	J	A	S	O	N	D	J 14	F	M	A	M	J	J	A	S	O	N	D	J 15
Homes Sold	3	12	9	14	19	19	18	9	16	14	10	10	13	7	20	20	18	23	21	11	10	13	18	11	7	11	6	20	19	21	22	18	12	10	10	8
3 Mo. Roll Avg			8	12	14	17	19	15	14	13	13	11	11	10	13	16	19	20	21	18	14	11	14	14	12	10	8	12	15	20	21	20	17	13	11	9

(000's)	F 12	M	A	M	J	J	A	S	O	N	D	J 13	F	M	A	M	J	J	A	S	O	N	D	J 14	F	M	A	M	J	J	A	S	O	N	D	J 15
Median Sale Price	81	245	332	257	410	360	385	394	459	475	509	440	330	300	491	428	388	446	294	920	375	228	444	385	920	385	342	495	340	508	562	463	242	411	493	435
3 Mo. Roll Avg			219	278	333	342	385	380	413	442	481	474	426	357	373	406	435	420	376	553	530	508	349	352	583	563	549	407	392	448	470	511	422	372	382	446

	F 12	M	A	M	J	J	A	S	O	N	D	J 13	F	M	A	M	J	J	A	S	O	N	D	J 14	F	M	A	M	J	J	A	S	O	N	D	J 15
Inventory	118	113	120	121	108	106	97	93	82	69	70	64	57	56	72	77	78	79	84	80	76	70	58	58	62	76	83	83	94	95	100	94	76	73	61	68
MSI	39	9	13	9	6	6	5	10	5	5	7	6	4	8	4	4	4	3	4	7	8	5	3	5	9	7	14	4	5	5	5	5	6	7	6	9

	F 12	M	A	M	J	J	A	S	O	N	D	J 13	F	M	A	M	J	J	A	S	O	N	D	J 14	F	M	A	M	J	J	A	S	O	N	D	J 15
Days On Market	74	115	125	140	98	161	140	257	71	99	112	153	93	97	95	84	61	33	54	37	27	48	59	59	50	109	58	58	40	83	78	62	37	83	89	73
3 Mo. Roll Avg			105	127	121	133	133	186	156	142	94	121	119	114	95	92	80	59	49	41	39	37	45	55	56	73	72	75	52	60	67	74	59	61	70	82

	F 12	M	A	M	J	J	A	S	O	N	D	J 13	F	M	A	M	J	J	A	S	O	N	D	J 14	F	M	A	M	J	J	A	S	O	N	D	J 15
Price per Sq Ft	85	145	161	151	178	196	207	183	203	186	190	199	168	181	214	198	175	196	173	316	205	190	192	218	259	198	174	216	180	193	230	231	171	192	247	188
3 Mo. Roll Avg			130	152	163	175	194	195	198	191	193	192	186	183	188	198	196	190	181	228	231	237	196	200	223	225	210	196	190	196	201	218	211	198	203	209

	F 12	M	A	M	J	J	A	S	O	N	D	J 13	F	M	A	M	J	J	A	S	O	N	D	J 14	F	M	A	M	J	J	A	S	O	N	D	J 15
Sale to List Price	1.029	0.973	0.927	0.923	0.953	0.898	0.942	0.941	0.941	0.945	0.965	0.921	0.962	0.971	0.962	0.970	0.937	0.948	0.951	0.950	0.937	0.950	0.935	0.921	0.961	0.958	0.987	0.962	0.950	0.947	0.944	0.947	0.922	0.908	0.970	0.916
3 Mo. Roll Avg			0.976	0.941	0.934	0.925	0.931	0.927	0.941	0.942	0.950	0.944	0.949	0.951	0.965	0.968	0.956	0.952	0.945	0.950	0.946	0.946	0.941	0.935	0.939	0.947	0.969	0.969	0.966	0.953	0.947	0.946	0.938	0.926	0.933	0.931

	F 12	M	A	M	J	J	A	S	O	N	D	J 13	F	M	A	M	J	J	A	S	O	N	D	J 14	F	M	A	M	J	J	A	S	O	N	D	J 15
New Listings	20	19	31	26	25	23	16	21	13	11	13	16	20	20	35	44	31	26	30	25	26	13	13	19	16	30	35	31	36	25	25	15	16	17	8	27
Inventory	118	113	120	121	108	106	97	93	82	69	70	64	57	56	72	77	78	79	84	80	76	70	58	58	62	76	83	83	94	95	100	94	76	73	61	68
Sales	3	12	9	14	19	19	18	9	16	14	10	10	13	7	20	20	18	23	21	11	10	13	18	11	7	11	6	20	19	21	22	18	12	10	10	8

(000's)	F 12	M	A	M	J	J	A	S	O	N	D	J 13	F	M	A	M	J	J	A	S	O	N	D	J 14	F	M	A	M	J	J	A	S	O	N	D	J 15
Avg Sale Price	151	283	420	308	451	474	512	430	511	481	494	476	408	367	504	557	571	475	378	844	395	672	576	578	1,001	462	328	508	441	556	561	584	369	495	911	416
3 Mo. Roll Avg			285	337	393	411	479	472	485	474	495	484	459	417	426	476	544	535	475	566	539	637	547	608	718	680	597	433	426	502	519	567	505	483	592	608

© 2015 Coldwell Banker Real Estate LLC. All Rights Reserved. Coldwell Banker Residential Brokerage fully supports the principles of the Fair Housing Act and the Equal Opportunity Act. Coldwell Banker Residential Brokerage is operated by a subsidiary of NRT LLC. Coldwell Banker and the Coldwell Banker Logo are registered service marks owned by Coldwell Banker Real Estate LLC.

Based on information from Midwest Real Estate Data LLC for the period 2/1/2012 through 1/31/2015. Due to MLS reporting methods and allowable reporting policy, this data is only informational and may not be completely accurate. Therefore, Coldwell Banker Residential Brokerage does not guarantee the data accuracy. Data maintained by the MLS's may not reflect all real estate activity in the market.

