

MLS Area: Winnetka



ART WILSON

Broker, Realtor

847-363-1599

www.NorthShoreHomesOnline.com

Art.Wilson@cbexchange.com



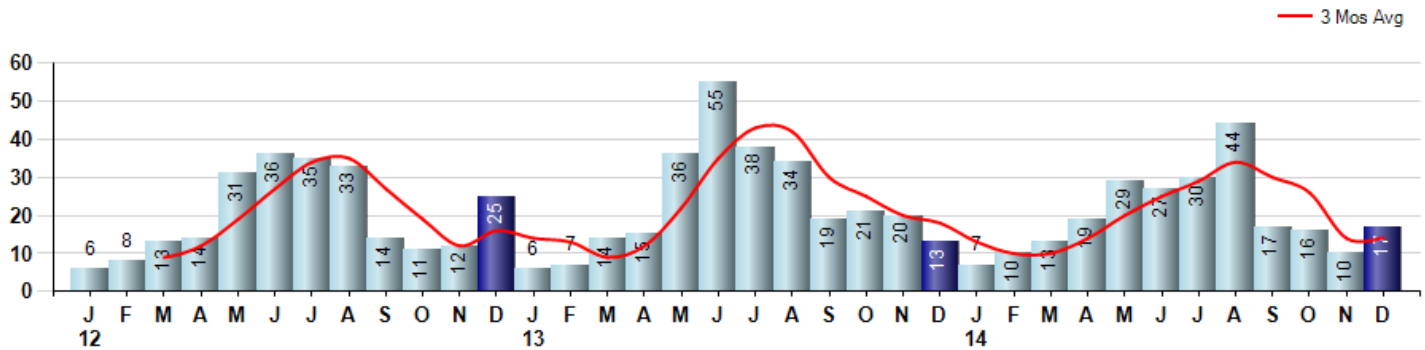
Price Range: \$0 to \$999,999,000 | Properties: Single Family Home, Townhome, Condo

Market Profile & Trends Overview	Month	Trending Versus*:				YTD	Trending Versus*:	
		LM	L3M	PYM	LY		PriorYTD	PriorYear
Median List Price of all Current Listings	\$1,687,000	↑		↑				
Average List Price of all Current Listings	\$2,208,186	↔		↑				
December Median Sales Price	\$740,000	↓	↓	↓	↓	\$1,149,000	↑	↑
December Average Sales Price	\$1,109,506	↑	↓	↓	↓	\$1,314,064	↑	↑
Total Properties Currently for Sale (Inventory)	106	↓		↑				
December Number of Properties Sold	17	↑		↑		239	↓	
December Average Days on Market (Solds)	82	↑	↑	↑	↑	68	↑	↑
December Month's Supply of Inventory	6.2	↓	↓	↓	↓	8.1	↑	↑
December Sale Price vs List Price Ratio	95.0%	↓	↑	↔	↑	94.3%	↓	↓

* LM=Last Month / L3M=Last 3 Months / PYM=Same Month Prior Year / LY=Last Year / YTD = Year-to-date

Property Sales

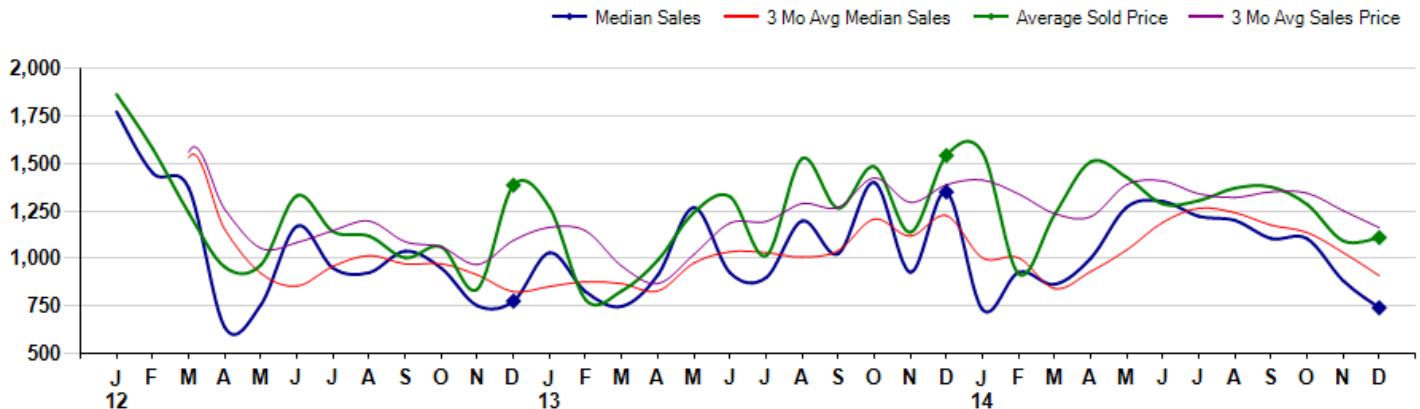
December Property sales were 17, up 30.8% from 13 in December of 2013 and 70.0% higher than the 10 sales last month. December 2014 sales were at a mid level compared to December of 2013 and 2012. December YTD sales of 239 are running -14.0% behind last year's year-to-date sales of 278.



Prices

The Median Sales Price in December was \$740,000, down -45.2% from \$1,350,000 in December of 2013 and down -16.1% from \$882,500 last month. The Average Sales Price in December was \$1,109,506, down -28.0% from \$1,541,557 in December of 2013 and up 1.6% from \$1,092,505 last month. December 2014 ASP was at the lowest level compared to December of 2013 and 2012.

Median means Middle (the same # of properties sold above and below Median) (000's)



MLS Area: Winnetka



ART WILSON

Broker, Realtor

847-363-1599

www.NorthShoreHomesOnline.com

Art.Wilson@cbexchange.com



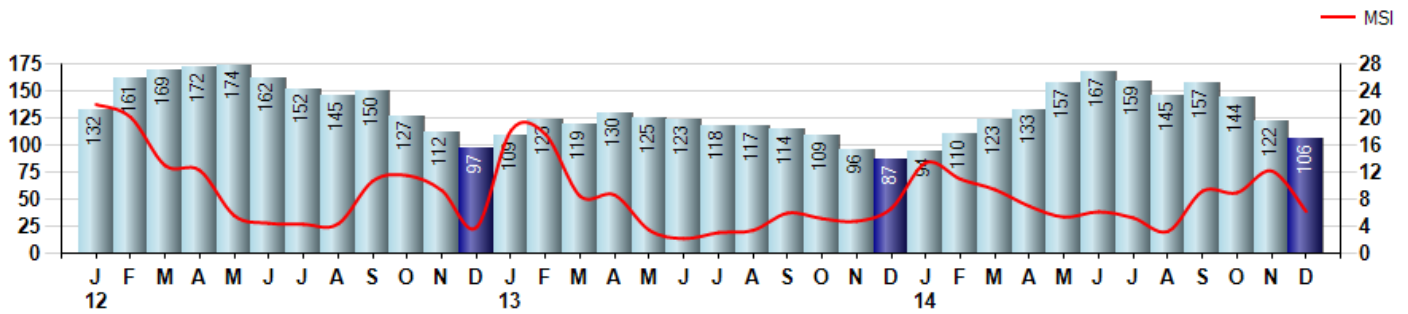
Price Range: \$0 to \$999,999,000 | Properties: Single Family Home, Townhome, Condo

Inventory & MSI

The Total Inventory of Properties available for sale as of December was 106, down -13.1% from 122 last month and up 21.8% from 87 in December of last year. December 2014 Inventory was at highest level compared to December of 2013 and 2012.

A comparatively lower MSI is more beneficial for sellers while a higher MSI is better for buyers. The December 2014 MSI of 6.2 months was at a mid range compared with December of 2013 and 2012.

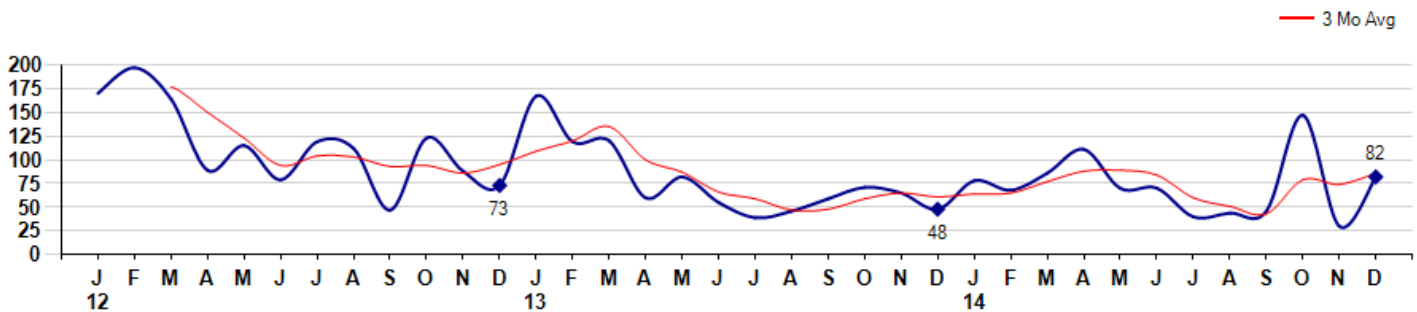
MSI is the # of months needed to sell all of the Inventory at the monthly Sales Pace



Market Time

The average Days On Market(DOM) shows how many days the average Property is on the Market before it sells. An upward trend in DOM tends to indicate a move towards more of a Buyer's market, a downward trend a move towards more of a Seller's market. The DOM for December was 82, up 173.3% from 30 days last month and up 70.8% from 48 days in December of last year. The December 2014 DOM was at its highest level compared with December of 2013 and 2012.

Average Days on Market(Listing to Contract) for properties sold during the month



MLS Area: Winnetka



ART WILSON

Broker, Realtor

847-363-1599

www.NorthShoreHomesOnline.com

Art.Wilson@cbexchange.com

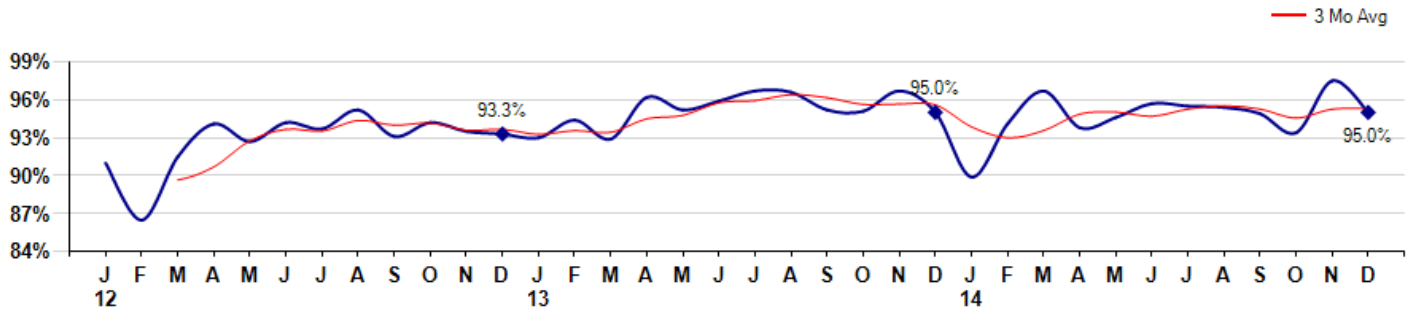


Price Range: \$0 to \$999,999,000 | Properties: Single Family Home, Townhome, Condo

Selling Price vs Listing Price

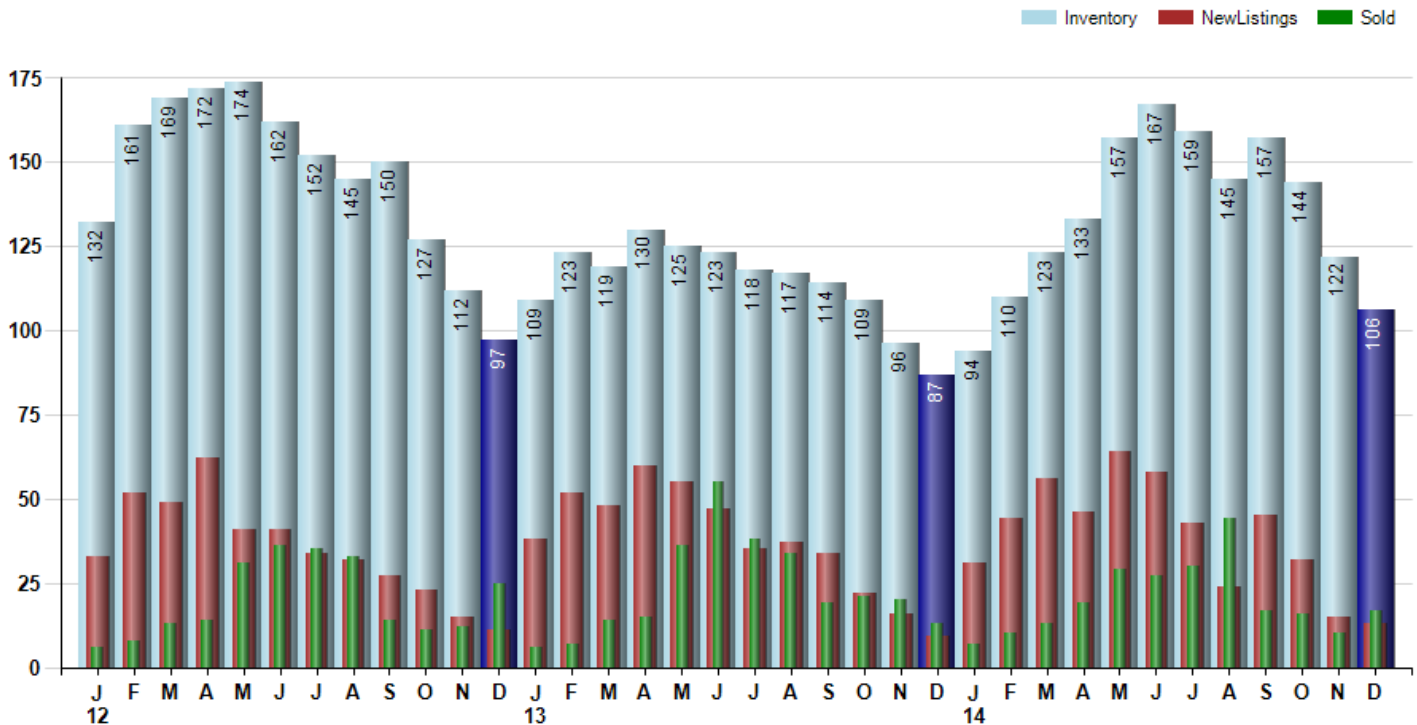
The Selling Price vs Listing Price reveals the average amount that Sellers are agreeing to come down from their list price. The lower the ratio is below 100% the more of a Buyer's market exists, a ratio at or above 100% indicates more of a Seller's market. The December 2014 Selling Price vs List Price of 95.0% was down from 97.5% last month and equal to 95.0% in December of last year.

Avg Selling Price divided by Avg Listing Price for sold properties during the month



Inventory / New Listings / Sales

This last view of the market combines monthly inventory of Properties for sale along with New Listings and Sales. The graph shows the basic annual seasonality of the market as well as the relationship between these items. The number of New Listings in December 2014 was 13, down -13.3% from 15 last month and up 44.4% from 9 in December of last year.



MLS Area: Winnetka



ART WILSON
 Broker, Realtor
 847-363-1599
 www.NorthShoreHomesOnline.com
 Art.Wilson@cbexchange.com



Price Range: \$0 to \$999,999,000 | Properties: Single Family Home, Townhome, Condo

	J 12	F	M	A	M	J	J	A	S	O	N	D	J 13	F	M	A	M	J	J	A	S	O	N	D	J 14	F	M	A	M	J	J	A	S	O	N	D
Homes Sold	6	8	13	14	31	36	35	33	14	11	12	25	6	7	14	15	36	55	38	34	19	21	20	13	7	10	13	19	29	27	30	44	17	16	10	17
3 Mo. Roll Avg			9	12	19	27	34	35	27	19	12	16	14	13	9	12	22	35	43	42	30	25	20	18	13	10	10	14	20	25	29	34	30	26	14	14

(000's)	J 12	F	M	A	M	J	J	A	S	O	N	D	J 13	F	M	A	M	J	J	A	S	O	N	D	J 14	F	M	A	M	J	J	A	S	O	N	D
Median Sale Price	1,772	1,450	1,370	636	757	1,170	949	925	1,039	949	751	775	1,030	825	748	912	1,268	925	899	1,198	1,025	1,400	928	1,350	730	928	864	1,000	1,270	1,300	1,222	1,200	1,105	1,104	883	740
3 Mo. Roll Avg			1,531	1,152	921	854	959	1,015	971	971	913	825	852	877	868	828	976	1,035	1,030	1,007	1,040	1,208	1,118	1,226	1,003	1,003	841	931	1,045	1,190	1,264	1,241	1,176	1,136	1,031	909

	J 12	F	M	A	M	J	J	A	S	O	N	D	J 13	F	M	A	M	J	J	A	S	O	N	D	J 14	F	M	A	M	J	J	A	S	O	N	D
Inventory	132	161	169	172	174	162	152	145	150	127	112	97	109	123	119	130	125	123	118	117	114	109	96	87	94	110	123	133	157	167	159	145	157	144	122	106
MSI	22	20	13	12	6	5	4	4	11	12	9	4	18	18	9	9	3	2	3	3	6	5	5	7	13	11	9	7	5	6	5	3	9	9	12	6

	J 12	F	M	A	M	J	J	A	S	O	N	D	J 13	F	M	A	M	J	J	A	S	O	N	D	J 14	F	M	A	M	J	J	A	S	O	N	D
Days On Market	170	197	164	89	115	79	119	112	47	123	88	73	167	119	120	60	82	55	39	46	59	71	65	48	78	68	86	111	70	70	40	44	46	147	30	82
3 Mo. Roll Avg			177	150	123	94	104	103	93	94	86	95	109	120	135	100	87	66	59	47	48	59	65	61	64	65	77	88	89	84	60	51	43	79	74	86

	J 12	F	M	A	M	J	J	A	S	O	N	D	J 13	F	M	A	M	J	J	A	S	O	N	D	J 14	F	M	A	M	J	J	A	S	O	N	D
Price per Sq Ft	420	330	289	272	281	325	324	285	268	327	290	279	284	335	196	332	287	364	352	317	329	315	308	334	427	261	348	317	389	342	295	350	358	290	328	342
3 Mo. Roll Avg			346	297	281	293	310	311	292	293	295	299	284	299	272	288	272	328	334	344	333	320	317	319	356	341	345	309	351	349	342	329	334	333	325	320

	J 12	F	M	A	M	J	J	A	S	O	N	D	J 13	F	M	A	M	J	J	A	S	O	N	D	J 14	F	M	A	M	J	J	A	S	O	N	D
Sale to List Price	0.910	0.865	0.915	0.941	0.927	0.942	0.937	0.952	0.931	0.942	0.935	0.933	0.930	0.944	0.929	0.962	0.952	0.959	0.967	0.966	0.952	0.951	0.967	0.950	0.899	0.941	0.967	0.938	0.946	0.957	0.955	0.954	0.949	0.934	0.975	0.950
3 Mo. Roll Avg			0.897	0.907	0.928	0.937	0.935	0.944	0.940	0.942	0.936	0.937	0.933	0.936	0.934	0.945	0.948	0.958	0.959	0.964	0.962	0.956	0.957	0.956	0.939	0.930	0.936	0.949	0.950	0.947	0.953	0.955	0.953	0.946	0.953	0.953

	J 12	F	M	A	M	J	J	A	S	O	N	D	J 13	F	M	A	M	J	J	A	S	O	N	D	J 14	F	M	A	M	J	J	A	S	O	N	D
New Listings	33	52	49	62	41	41	34	32	27	23	15	11	38	52	48	60	55	47	35	37	34	22	16	9	31	44	56	46	64	58	43	24	45	32	15	13
Inventory	132	161	169	172	174	162	152	145	150	127	112	97	109	123	119	130	125	123	118	117	114	109	96	87	94	110	123	133	157	167	159	145	157	144	122	106
Sales	6	8	13	14	31	36	35	33	14	11	12	25	6	7	14	15	36	55	38	34	19	21	20	13	7	10	13	19	29	27	30	44	17	16	10	17

(000's)	J 12	F	M	A	M	J	J	A	S	O	N	D	J 13	F	M	A	M	J	J	A	S	O	N	D	J 14	F	M	A	M	J	J	A	S	O	N	D
Avg Sale Price	1,863	1,579	1,239	954	966	1,331	1,142	1,118	1,003	1,061	838	1,386	1,268	783	828	991	1,242	1,325	1,014	1,526	1,264	1,483	1,138	1,542	1,558	919	1,231	1,509	1,427	1,287	1,305	1,370	1,376	1,284	1,093	1,110
3 Mo. Roll Avg			1,560	1,257	1,053	1,084	1,146	1,197	1,087	1,061	967	1,095	1,164	1,145	960	867	1,020	1,186	1,194	1,288	1,268	1,424	1,295	1,387	1,412	1,340	1,236	1,219	1,389	1,407	1,339	1,321	1,351	1,344	1,251	1,162

© 2015 Coldwell Banker Real Estate LLC. All Rights Reserved. Coldwell Banker Residential Brokerage fully supports the principles of the Fair Housing Act and the Equal Opportunity Act. Coldwell Banker Residential Brokerage is operated by a subsidiary of NRT LLC. Coldwell Banker and the Coldwell Banker Logo are registered service marks owned by Coldwell Banker Real Estate LLC.

Based on information from Midwest Real Estate Data LLC for the period 1/1/2012 through 12/31/2014. Due to MLS reporting methods and allowable reporting policy, this data is only informational and may not be completely accurate. Therefore, Coldwell Banker Residential Brokerage does not guarantee the data accuracy. Data maintained by the MLS's may not reflect all real estate activity in the market.

