

MLS Area: Evanston



ART WILSON

Broker, Realtor

847-363-1599

www.NorthShoreHomesOnline.com

Art.Wilson@cbexchange.com



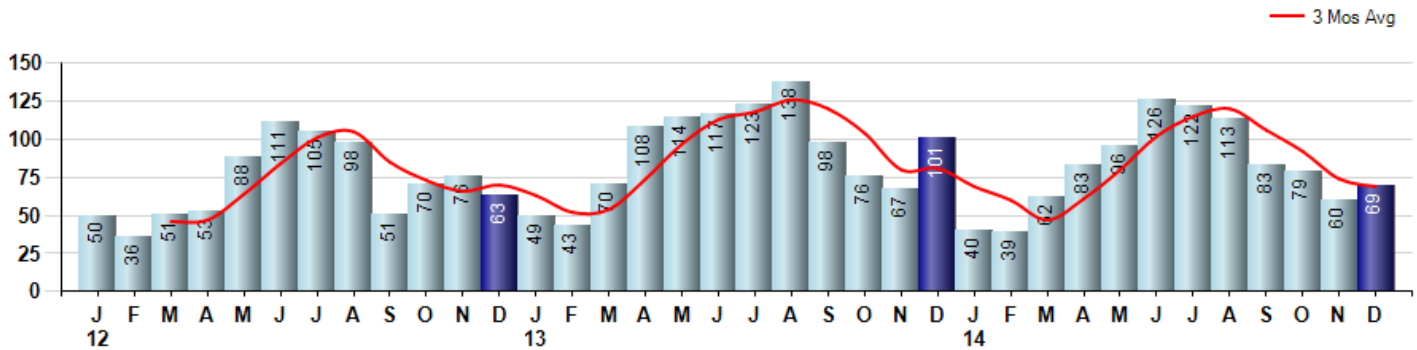
Price Range: \$0 to \$999,999,000 | Properties: Single Family Home, Townhome, Condo

Market Profile & Trends Overview	Month	Trending Versus*:				YTD	Trending Versus*:	
		LM	L3M	PYM	LY		PriorYTD	PriorYear
Median List Price of all Current Listings	\$297,450	↑		↑				
Average List Price of all Current Listings	\$455,806	↑		↑				
December Median Sales Price	\$320,000	↑	↑	↓	↑	\$315,000	↑	↑
December Average Sales Price	\$372,226	↑	↑	↓	↑	\$377,185	↑	↑
Total Properties Currently for Sale (Inventory)	284	↓		↑				
December Number of Properties Sold	69	↑		↓		972	↓	
December Average Days on Market (Solds)	80	↑	↑	↑	↑	59	↓	↓
December Month's Supply of Inventory	4.1	↓	↓	↑	↑	4.5	↑	↑
December Sale Price vs List Price Ratio	96.0%	↓	→	↓	↓	96.8%	↑	↑

* LM=Last Month / L3M=Last 3 Months / PYM=Same Month Prior Year / LY=Last Year / YTD = Year-to-date

Property Sales

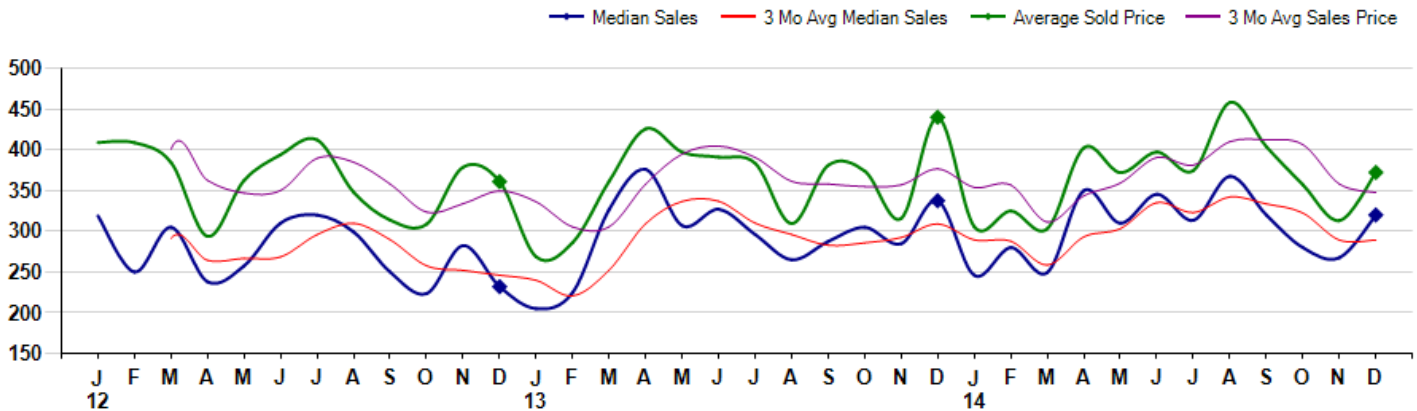
December Property sales were 69, down -31.7% from 101 in December of 2013 and 15.0% higher than the 60 sales last month. December 2014 sales were at a mid level compared to December of 2013 and 2012. December YTD sales of 972 are running -12.0% behind last year's year-to-date sales of 1,104.



Prices

The Median Sales Price in December was \$320,000, down -5.2% from \$337,500 in December of 2013 and up 19.6% from \$267,500 last month. The Average Sales Price in December was \$372,226, down -15.4% from \$440,038 in December of 2013 and up 18.8% from \$313,214 last month. December 2014 ASP was at a mid range compared to December of 2013 and 2012.

Median means Middle (the same # of properties sold above and below Median) (000's)



MLS Area: Evanston



ART WILSON
 Broker, Realtor
 847-363-1599
 www.NorthShoreHomesOnline.com
 Art.Wilson@cbexchange.com



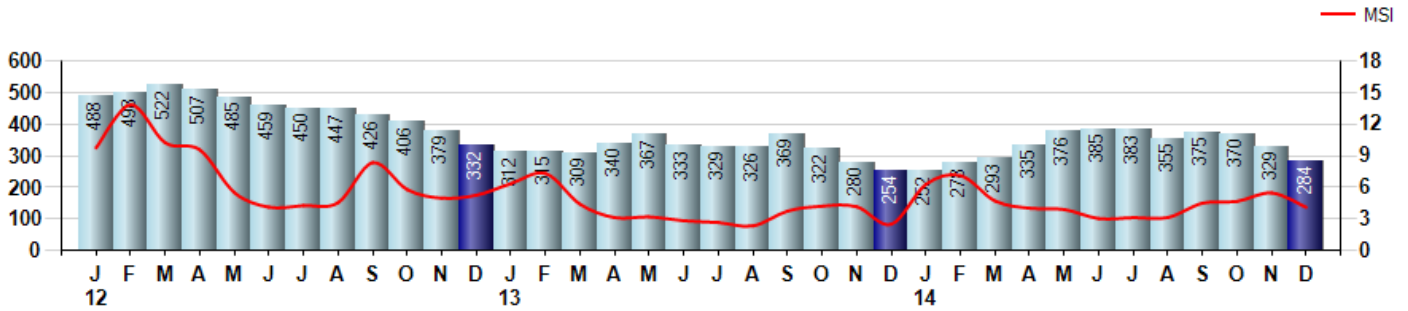
Price Range: \$0 to \$999,999,000 | Properties: Single Family Home, Townhome, Condo

Inventory & MSI

The Total Inventory of Properties available for sale as of December was 284, down -13.7% from 329 last month and up 11.8% from 254 in December of last year. December 2014 Inventory was at a mid range compared to December of 2013 and 2012.

A comparatively lower MSI is more beneficial for sellers while a higher MSI is better for buyers. The December 2014 MSI of 4.1 months was at a mid range compared with December of 2013 and 2012.

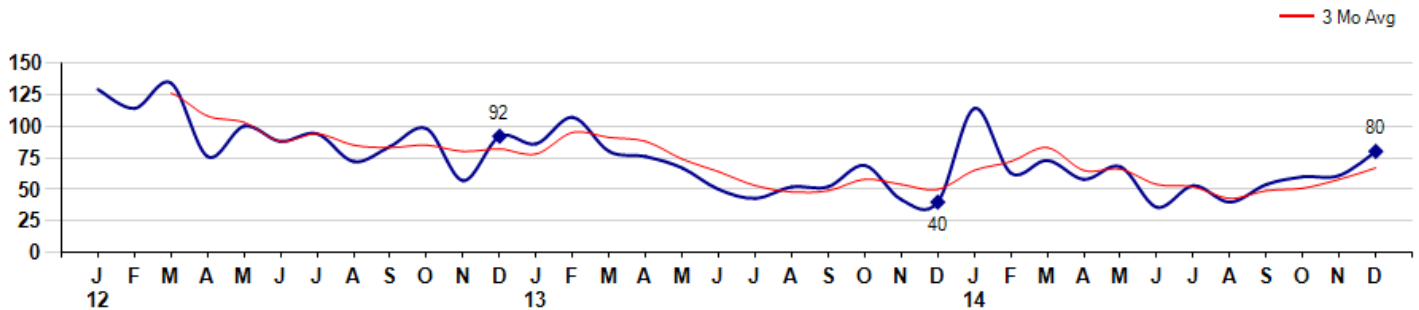
MSI is the # of months needed to sell all of the Inventory at the monthly Sales Pace



Market Time

The average Days On Market(DOM) shows how many days the average Property is on the Market before it sells. An upward trend in DOM tends to indicate a move towards more of a Buyer's market, a downward trend a move towards more of a Seller's market. The DOM for December was 80, up 31.1% from 61 days last month and up 100.0% from 40 days in December of last year. The December 2014 DOM was at a mid range compared with December of 2013 and 2012.

Average Days on Market(Listing to Contract) for properties sold during the month



MLS Area: Evanston



ART WILSON

Broker, Realtor

847-363-1599

www.NorthShoreHomesOnline.com

Art.Wilson@cbexchange.com

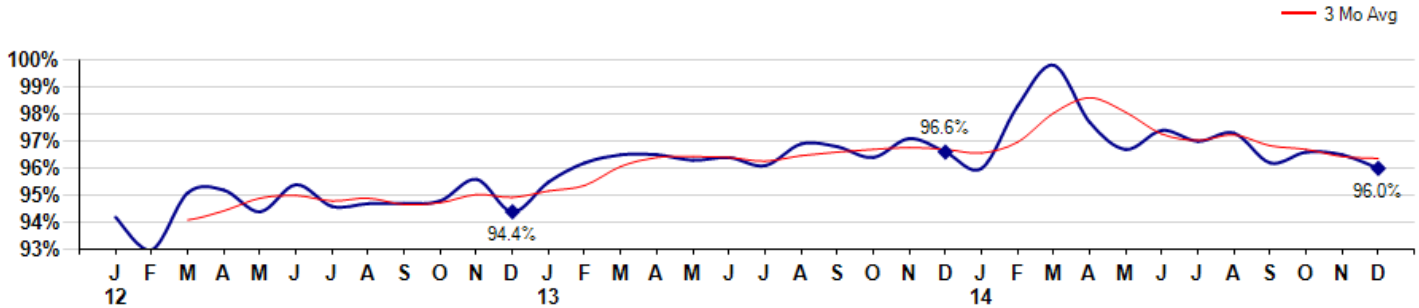


Price Range: \$0 to \$999,999,000 | Properties: Single Family Home, Townhome, Condo

Selling Price vs Listing Price

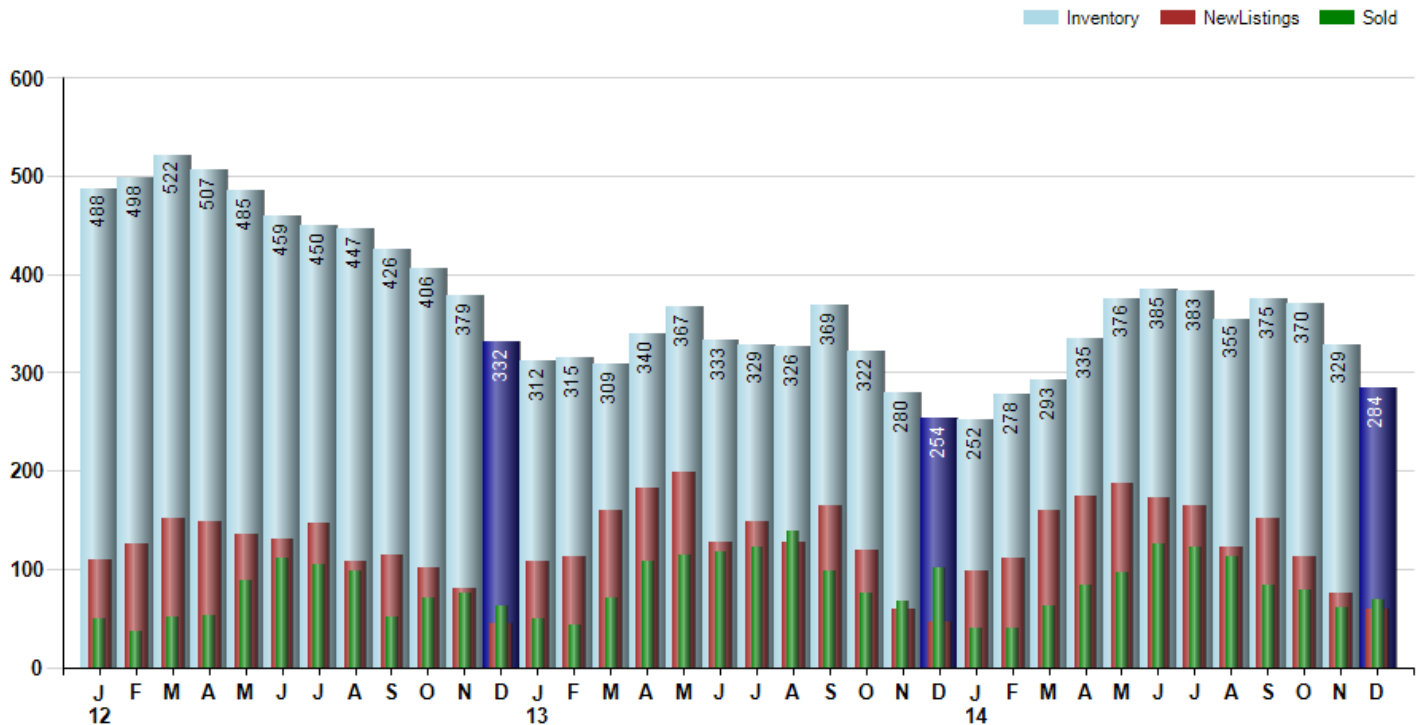
The Selling Price vs Listing Price reveals the average amount that Sellers are agreeing to come down from their list price. The lower the ratio is below 100% the more of a Buyer's market exists, a ratio at or above 100% indicates more of a Seller's market. The December 2014 Selling Price vs List Price of 96.0% was down from 96.5% last month and down from 96.6% in December of last year.

Avg Selling Price divided by Avg Listing Price for sold properties during the month



Inventory / New Listings / Sales

This last view of the market combines monthly inventory of Properties for sale along with New Listings and Sales. The graph shows the basic annual seasonality of the market as well as the relationship between these items. The number of New Listings in December 2014 was 59, down -21.3% from 75 last month and up 28.3% from 46 in December of last year.



© 2015 Coldwell Banker Real Estate LLC. All Rights Reserved. Coldwell Banker Residential Brokerage fully supports the principles of the Fair Housing Act and the Equal Opportunity Act. Coldwell Banker Residential Brokerage is operated by a subsidiary of NRT LLC. Coldwell Banker and the Coldwell Banker Logo are registered service marks owned by Coldwell Banker Real Estate LLC.

Based on information from Midwest Real Estate Data LLC for the period 1/1/2012 through 12/31/2014. Due to MLS reporting methods and allowable reporting policy, this data is only informational and may not be completely accurate. Therefore, Coldwell Banker Residential Brokerage does not guarantee the data accuracy. Data maintained by the MLS's may not reflect all real estate activity in the market.



MLS Area: Evanston



ART WILSON
 Broker, Realtor
 847-363-1599
 www.NorthShoreHomesOnline.com
 Art.Wilson@cbexchange.com



Price Range: \$0 to \$999,999,000 | Properties: Single Family Home, Townhome, Condo

	J 12	F	M	A	M	J	J	A	S	O	N	D	J 13	F	M	A	M	J	J	A	S	O	N	D	J 14	F	M	A	M	J	J	A	S	O	N	D
Homes Sold	50	36	51	53	88	111	105	98	51	70	76	63	49	43	70	108	114	117	123	138	98	76	67	101	40	39	62	83	96	126	122	113	83	79	60	69
3 Mo. Roll Avg			46	47	64	84	101	105	85	73	66	70	63	52	54	74	97	113	118	126	120	104	80	81	69	60	47	61	80	102	115	120	106	92	74	69

(000's)	J 12	F	M	A	M	J	J	A	S	O	N	D	J 13	F	M	A	M	J	J	A	S	O	N	D	J 14	F	M	A	M	J	J	A	S	O	N	D
Median Sale Price	319	250	305	238	258	310	320	299	250	224	283	232	205	225	327	376	307	327	296	265	288	305	285	338	246	280	250	350	310	346	314	368	320	280	268	320
3 Mo. Roll Avg			291	264	267	269	296	310	290	258	252	246	240	221	252	309	337	337	310	296	283	286	292	309	289	288	259	293	303	335	323	342	334	323	289	289

	J 12	F	M	A	M	J	J	A	S	O	N	D	J 13	F	M	A	M	J	J	A	S	O	N	D	J 14	F	M	A	M	J	J	A	S	O	N	D
Inventory	488	498	522	507	485	459	450	447	426	406	379	332	312	315	309	340	367	333	329	326	369	322	280	254	252	278	293	335	376	385	383	355	375	370	329	284
MSI	10	14	10	10	6	4	4	5	8	6	5	5	6	7	4	3	3	3	3	2	4	4	4	3	6	7	5	4	4	3	3	3	5	5	5	4

	J 12	F	M	A	M	J	J	A	S	O	N	D	J 13	F	M	A	M	J	J	A	S	O	N	D	J 14	F	M	A	M	J	J	A	S	O	N	D
Days On Market	129	114	134	76	100	88	94	72	84	98	57	92	86	107	80	76	67	50	43	52	52	69	42	40	114	63	73	58	68	36	53	40	54	60	61	80
3 Mo. Roll Avg			126	108	103	88	94	85	83	85	80	82	78	95	91	88	74	64	53	48	49	58	54	50	65	72	83	65	66	54	52	43	49	51	58	67

	J 12	F	M	A	M	J	J	A	S	O	N	D	J 13	F	M	A	M	J	J	A	S	O	N	D	J 14	F	M	A	M	J	J	A	S	O	N	D
Price per Sq Ft	183	174	211	174	167	228	182	204	171	171	190	183	164	158	186	213	202	198	216	201	210	192	206	232	203	186	174	231	210	223	214	228	222	218	192	205
3 Mo. Roll Avg			189	186	184	190	192	205	186	182	177	181	179	168	169	186	200	204	205	205	209	201	203	210	214	207	188	197	205	221	216	222	221	223	211	205

	J 12	F	M	A	M	J	J	A	S	O	N	D	J 13	F	M	A	M	J	J	A	S	O	N	D	J 14	F	M	A	M	J	J	A	S	O	N	D
Sale to List Price	0.942	0.930	0.951	0.952	0.944	0.954	0.946	0.947	0.947	0.948	0.956	0.944	0.955	0.962	0.965	0.965	0.963	0.964	0.961	0.969	0.968	0.964	0.971	0.966	0.960	0.983	0.998	0.977	0.967	0.974	0.970	0.973	0.962	0.966	0.965	0.960
3 Mo. Roll Avg			0.941	0.944	0.949	0.950	0.948	0.949	0.947	0.947	0.950	0.949	0.952	0.954	0.961	0.964	0.964	0.964	0.963	0.965	0.966	0.967	0.968	0.967	0.966	0.970	0.980	0.986	0.981	0.973	0.970	0.972	0.968	0.967	0.964	0.964

	J 12	F	M	A	M	J	J	A	S	O	N	D	J 13	F	M	A	M	J	J	A	S	O	N	D	J 14	F	M	A	M	J	J	A	S	O	N	D
New Listings	110	125	151	148	136	131	147	108	114	101	80	45	108	112	159	183	198	128	148	128	164	119	59	46	98	111	160	174	188	172	164	122	151	113	75	59
Inventory	488	498	522	507	485	459	450	447	426	406	379	332	312	315	309	340	367	333	329	326	369	322	280	254	252	278	293	335	376	385	383	355	375	370	329	284
Sales	50	36	51	53	88	111	105	98	51	70	76	63	49	43	70	108	114	117	123	138	98	76	67	101	40	39	62	83	96	126	122	113	83	79	60	69

(000's)	J 12	F	M	A	M	J	J	A	S	O	N	D	J 13	F	M	A	M	J	J	A	S	O	N	D	J 14	F	M	A	M	J	J	A	S	O	N	D
Avg Sale Price	409	409	385	294	362	394	412	348	314	309	379	361	269	286	362	426	397	391	384	309	381	374	316	440	306	325	303	403	372	397	375	458	404	357	313	372
3 Mo. Roll Avg			401	362	347	350	390	385	358	324	334	350	336	305	305	358	395	405	391	361	358	355	357	377	354	357	311	344	359	391	381	410	412	406	358	348

© 2015 Coldwell Banker Real Estate LLC. All Rights Reserved. Coldwell Banker Residential Brokerage fully supports the principles of the Fair Housing Act and the Equal Opportunity Act. Coldwell Banker Residential Brokerage is operated by a subsidiary of NRT LLC. Coldwell Banker and the Coldwell Banker Logo are registered service marks owned by Coldwell Banker Real Estate LLC.

Based on information from Midwest Real Estate Data LLC for the period 1/1/2012 through 12/31/2014. Due to MLS reporting methods and allowable reporting policy, this data is only informational and may not be completely accurate. Therefore, Coldwell Banker Residential Brokerage does not guarantee the data accuracy. Data maintained by the MLS's may not reflect all real estate activity in the market.

