

## MLS Area: Evanston



**ART WILSON**

Broker, Realtor

847-363-1599

www.NorthShoreHomesOnline.com

Art.Wilson@cbexchange.com



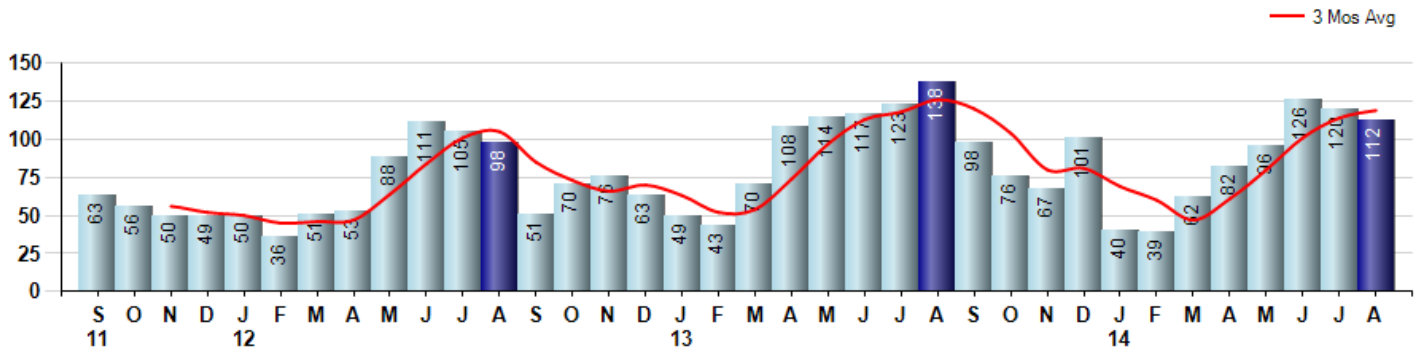
Price Range: \$0 to \$999,999,000 | Properties: Single Family Home, Townhome, Condo

Market Profile & Trends Overview	Month	Trending Versus*:				YTD	Trending Versus*:	
		LM	L3M	PYM	LY		PriorYTD	PriorYear
Median List Price of all Current Listings	\$288,950	↔		↑				
Average List Price of all Current Listings	\$467,440	↑		↑				
August Median Sales Price	\$367,500	↑	↑	↑	↑	\$325,000	↑	↑
August Average Sales Price	\$461,356	↑	↑	↑	↑	\$383,652	↑	↑
Total Properties Currently for Sale (Inventory)	328	↓		↔				
August Number of Properties Sold	112	↓		↓		677	↓	
August Average Days on Market (Solds)	41	↓	↓	↓	↓	56	↓	↓
August Month's Supply of Inventory	2.9	↓	↓	↑	↓	4.3	↑	↑
August Sale Price vs List Price Ratio	97.3%	↑	↑	↑	↑	97.1%	↑	↑

\* LM=Last Month / L3M=Last 3 Months / PYM=Same Month Prior Year / LY=Last Year / YTD = Year-to-date

### Property Sales

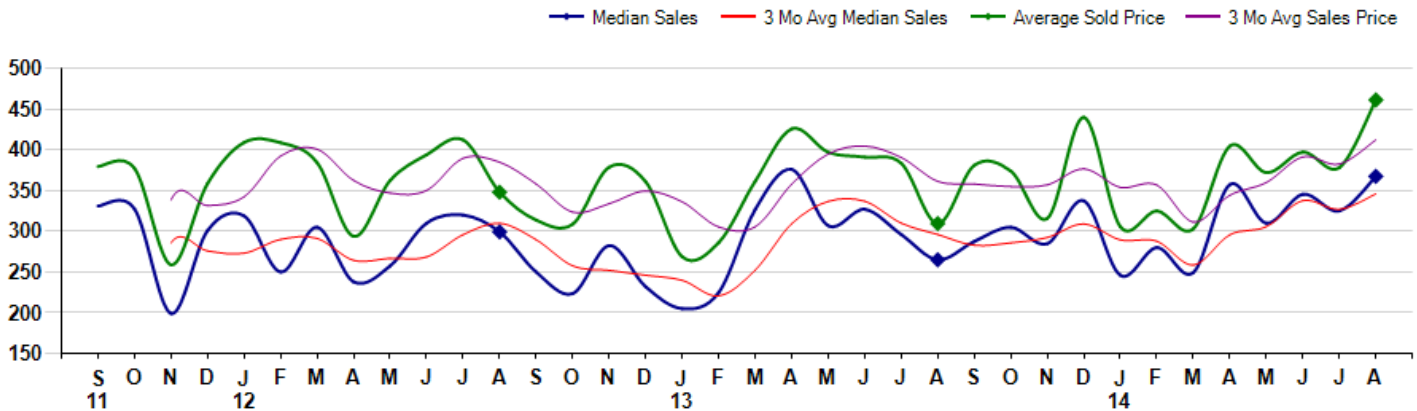
August Property sales were 112, down -18.8% from 138 in August of 2013 and -6.7% lower than the 120 sales last month. August 2014 sales were at a mid level compared to August of 2013 and 2012. August YTD sales of 677 are running -11.2% behind last year's year-to-date sales of 762.



### Prices

The Median Sales Price in August was \$367,500, up 38.7% from \$265,000 in August of 2013 and up 13.1% from \$325,000 last month. The Average Sales Price in August was \$461,356, up 49.1% from \$309,473 in August of 2013 and up 22.0% from \$378,245 last month. August 2014 ASP was at highest level compared to August of 2013 and 2012.

Median means Middle (the same # of properties sold above and below Median) (000's)



## MLS Area: Evanston



**ART WILSON**

Broker, Realtor

847-363-1599

www.NorthShoreHomesOnline.com

Art.Wilson@cbexchange.com



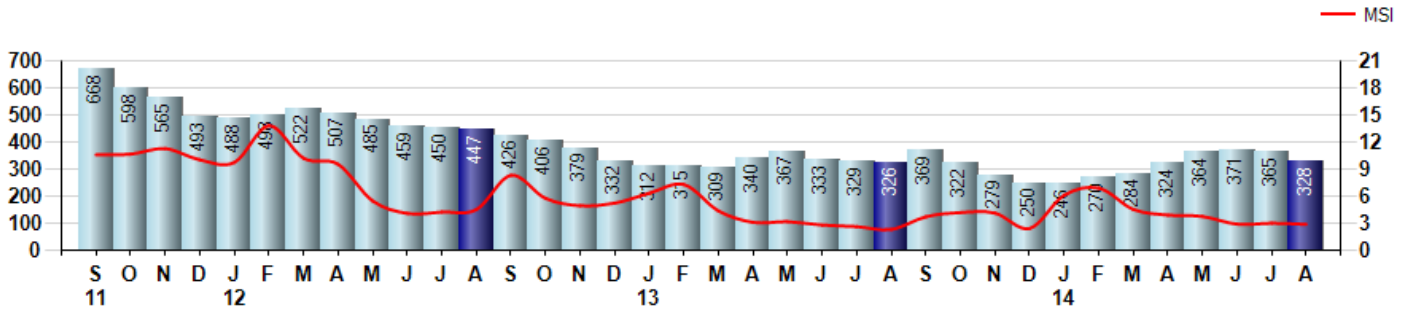
Price Range: \$0 to \$999,999,000 | Properties: Single Family Home, Townhome, Condo

### Inventory & MSI

The Total Inventory of Properties available for sale as of August was 328, down -10.1% from 365 last month and up 0.6% from 326 in August of last year. August 2014 Inventory was at a mid range compared to August of 2013 and 2012.

A comparatively lower MSI is more beneficial for sellers while a higher MSI is better for buyers. The August 2014 MSI of 2.9 months was at a mid range compared with August of 2013 and 2012.

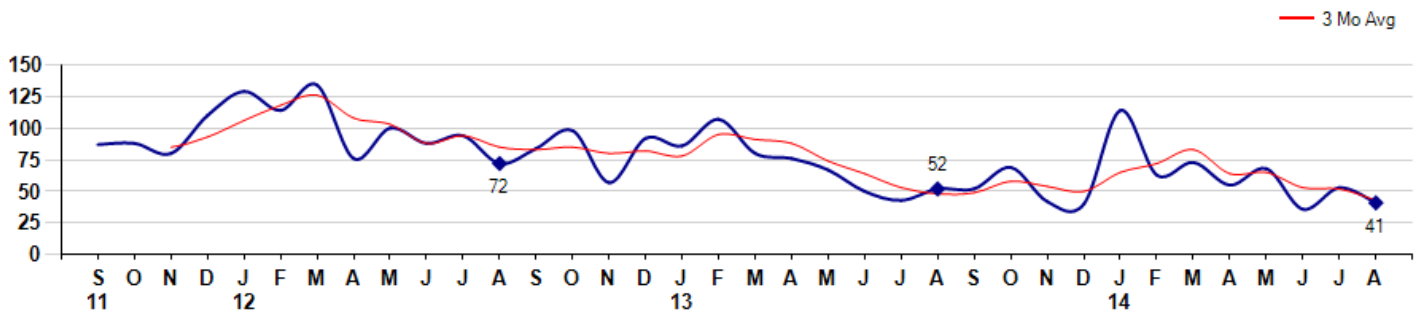
MSI is the # of months needed to sell all of the Inventory at the monthly Sales Pace



### Market Time

The average Days On Market(DOM) shows how many days the average Property is on the Market before it sells. An upward trend in DOM tends to indicate a move towards more of a Buyer's market, a downward trend a move towards more of a Seller's market. The DOM for August was 41, down -22.6% from 53 days last month and down -21.2% from 52 days in August of last year. The August 2014 DOM was at its lowest level compared with August of 2013 and 2012.

Average Days on Market(Listing to Contract) for properties sold during the month



## MLS Area: Evanston



**ART WILSON**

Broker, Realtor

847-363-1599

www.NorthShoreHomesOnline.com

Art.Wilson@cbexchange.com

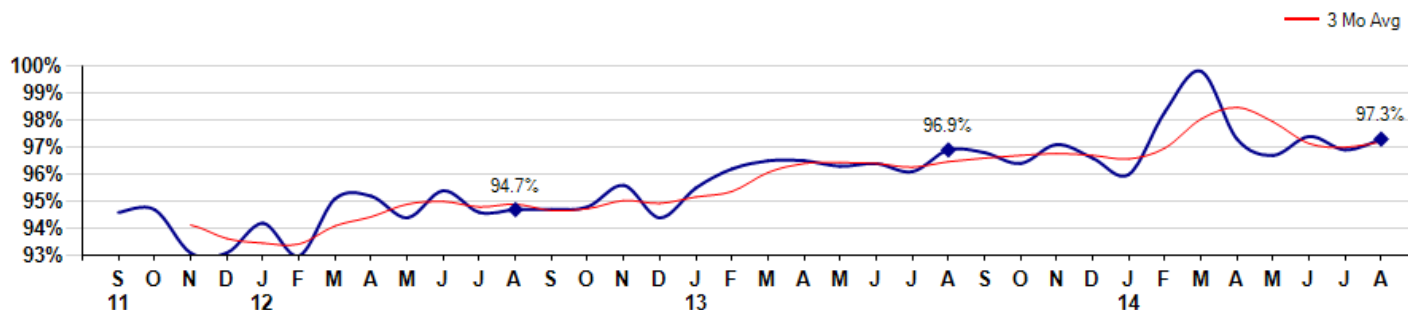


Price Range: \$0 to \$999,999,000 | Properties: Single Family Home, Townhome, Condo

### Selling Price vs Listing Price

The Selling Price vs Listing Price reveals the average amount that Sellers are agreeing to come down from their list price. The lower the ratio is below 100% the more of a Buyer's market exists, a ratio at or above 100% indicates more of a Seller's market. The August 2014 Selling Price vs List Price of 97.3% was up from 96.9% last month and up from 96.9% in August of last year.

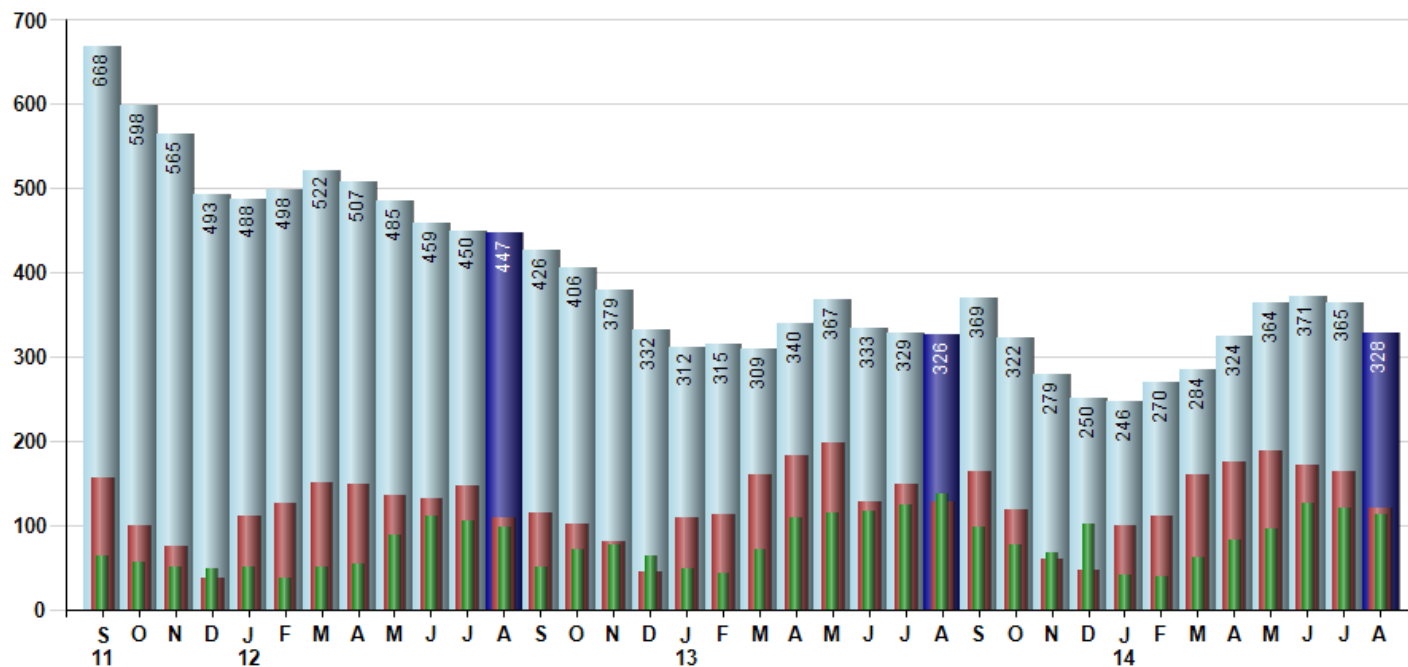
Avg Selling Price divided by Avg Listing Price for sold properties during the month



### Inventory / New Listings / Sales

This last view of the market combines monthly inventory of Properties for sale along with New Listings and Sales. The graph shows the basic annual seasonality of the market as well as the relationship between these items. The number of New Listings in August 2014 was 120, down -26.4% from 163 last month and down -6.3% from 128 in August of last year.

Inventory    New Listings    Sold



© 2014 Coldwell Banker Real Estate LLC. All Rights Reserved. Coldwell Banker Residential Brokerage fully supports the principles of the Fair Housing Act and the Equal Opportunity Act. Coldwell Banker Residential Brokerage is operated by a subsidiary of NRT LLC. Coldwell Banker and the Coldwell Banker Logo are registered service marks owned by Coldwell Banker Real Estate LLC.

Based on information from Midwest Real Estate Data LLC for the period 9/1/2011 through 8/31/2014. Due to MLS reporting methods and allowable reporting policy, this data is only informational and may not be completely accurate. Therefore, Coldwell Banker Residential Brokerage does not guarantee the data accuracy. Data maintained by the MLS's may not reflect all real estate activity in the market.



## MLS Area: Evanston



**ART WILSON**  
 Broker, Realtor  
 847-363-1599  
 www.NorthShoreHomesOnline.com  
 Art.Wilson@cbexchange.com



Price Range: \$0 to \$999,999,000 | Properties: Single Family Home, Townhome, Condo

	S 11	O	N	D	J 12	F	M	A	M	J	J	A	S	O	N	D	J 13	F	M	A	M	J	J	A	S	O	N	D	J 14	F	M	A	M	J	J	A
Homes Sold	63	56	50	49	50	36	51	53	88	111	105	98	51	70	76	63	49	43	70	108	114	117	123	138	98	76	67	101	40	39	62	82	96	126	120	112
3 Mo. Roll Avg			56	52	50	45	46	47	64	84	101	105	85	73	66	70	63	52	54	74	97	113	118	126	120	104	80	81	69	60	47	61	80	101	114	119

	(000's) S 11	O	N	D	J 12	F	M	A	M	J	J	A	S	O	N	D	J 13	F	M	A	M	J	J	A	S	O	N	D	J 14	F	M	A	M	J	J	A
Median Sale Price	331	328	199	301	319	250	305	238	258	310	320	299	250	224	283	232	205	225	327	376	307	327	296	265	288	305	285	338	246	280	250	358	310	346	325	368
3 Mo. Roll Avg			286	276	273	290	291	264	267	269	296	310	290	258	252	246	240	221	252	309	337	337	310	296	283	286	292	309	289	288	259	296	306	338	327	346

	S 11	O	N	D	J 12	F	M	A	M	J	J	A	S	O	N	D	J 13	F	M	A	M	J	J	A	S	O	N	D	J 14	F	M	A	M	J	J	A
Inventory	668	598	565	493	488	498	522	507	485	459	450	447	426	406	379	332	312	315	309	340	367	333	329	326	369	322	279	250	246	270	284	324	364	371	365	328
MSI	11	11	11	10	10	14	10	10	6	4	4	5	8	6	5	5	6	7	4	3	3	3	3	2	4	4	4	2	6	7	5	4	4	3	3	3

	S 11	O	N	D	J 12	F	M	A	M	J	J	A	S	O	N	D	J 13	F	M	A	M	J	J	A	S	O	N	D	J 14	F	M	A	M	J	J	A
Days On Market	87	88	80	110	129	114	134	76	100	88	94	72	84	98	57	92	86	107	80	76	67	50	43	52	52	69	42	40	114	63	73	55	68	36	53	41
3 Mo. Roll Avg			85	93	106	118	126	108	103	88	94	85	83	85	80	82	78	95	91	88	74	64	53	48	49	58	54	50	65	72	83	64	65	53	52	43

	S 11	O	N	D	J 12	F	M	A	M	J	J	A	S	O	N	D	J 13	F	M	A	M	J	J	A	S	O	N	D	J 14	F	M	A	M	J	J	A
Price per Sq Ft	201	169	166	185	183	174	211	174	167	228	182	204	171	171	190	183	164	158	186	213	202	198	216	201	210	192	206	232	203	186	174	232	210	223	216	230
3 Mo. Roll Avg			179	173	178	181	189	186	184	190	192	205	186	182	177	181	179	168	169	186	200	204	205	205	209	201	203	210	214	207	188	197	205	222	216	223

	S 11	O	N	D	J 12	F	M	A	M	J	J	A	S	O	N	D	J 13	F	M	A	M	J	J	A	S	O	N	D	J 14	F	M	A	M	J	J	A
Sale to List Price	0.946	0.947	0.931	0.931	0.942	0.930	0.951	0.952	0.944	0.954	0.946	0.947	0.947	0.948	0.956	0.944	0.955	0.962	0.965	0.965	0.963	0.964	0.961	0.969	0.968	0.964	0.971	0.966	0.960	0.983	0.998	0.973	0.967	0.974	0.969	0.973
3 Mo. Roll Avg			0.941	0.936	0.935	0.934	0.941	0.944	0.949	0.950	0.948	0.949	0.947	0.947	0.950	0.949	0.952	0.954	0.961	0.964	0.964	0.964	0.963	0.965	0.966	0.967	0.968	0.967	0.966	0.970	0.980	0.985	0.979	0.971	0.970	0.972

	S 11	O	N	D	J 12	F	M	A	M	J	J	A	S	O	N	D	J 13	F	M	A	M	J	J	A	S	O	N	D	J 14	F	M	A	M	J	J	A
New Listings	156	99	75	37	110	125	151	148	136	131	147	108	114	101	80	45	108	112	159	183	198	128	148	128	164	119	59	46	99	111	160	175	188	171	163	120
Inventory	668	598	565	493	488	498	522	507	485	459	450	447	426	406	379	332	312	315	309	340	367	333	329	326	369	322	279	250	246	270	284	324	364	371	365	328
Sales	63	56	50	49	50	36	51	53	88	111	105	98	51	70	76	63	49	43	70	108	114	117	123	138	98	76	67	101	40	39	62	82	96	126	120	112

	(000's) S 11	O	N	D	J 12	F	M	A	M	J	J	A	S	O	N	D	J 13	F	M	A	M	J	J	A	S	O	N	D	J 14	F	M	A	M	J	J	A
Avg Sale Price	380	377	259	359	409	409	385	294	362	394	412	348	314	309	379	361	269	286	362	426	397	391	384	309	381	374	316	440	306	325	303	405	372	397	378	461
3 Mo. Roll Avg			339	332	342	392	401	362	347	350	390	385	358	324	334	350	336	305	305	358	395	405	391	361	358	355	357	377	354	357	311	344	360	391	383	412

© 2014 Coldwell Banker Real Estate LLC. All Rights Reserved. Coldwell Banker Residential Brokerage fully supports the principles of the Fair Housing Act and the Equal Opportunity Act. Coldwell Banker Residential Brokerage is operated by a subsidiary of NRT LLC. Coldwell Banker and the Coldwell Banker Logo are registered service marks owned by Coldwell Banker Real Estate LLC.

Based on information from Midwest Real Estate Data LLC for the period 9/1/2011 through 8/31/2014. Due to MLS reporting methods and allowable reporting policy, this data is only informational and may not be completely accurate. Therefore, Coldwell Banker Residential Brokerage does not guarantee the data accuracy. Data maintained by the MLS's may not reflect all real estate activity in the market.

