

## MLS Area: Winnetka



**ART WILSON**

Broker, Realtor

847-363-1599

www.NorthShoreHomesOnline.com

Art.Wilson@cbexchange.com



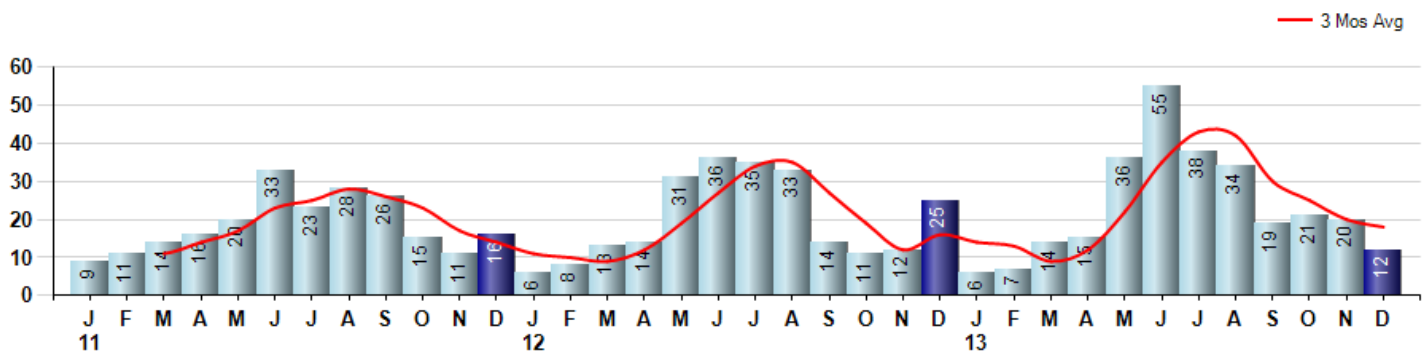
Price Range: \$0 to \$999,999,000 | Properties: Single Family Home, Townhome, Condo

Market Profile & Trends Overview	Month	Trending Versus*:				YTD	Trending Versus*:	
		LM	L3M	PYM	LY		PriorYTD	PriorYear
Median List Price of all Current Listings	\$1,775,000	↓		↑				
Average List Price of all Current Listings	\$2,180,565	↓		↓				
December Median Sales Price	\$1,345,000	↑	↑	↑	↑	\$955,000	↔	↔
December Average Sales Price	\$1,557,520	↑	↑	↑	↑	\$1,242,530	↑	↑
Total Properties Currently for Sale (Inventory)	83	↓		↓				
December Number of Properties Sold	12	↓		↓		277	↑	
December Average Days on Market (Solds)	47	↓	↓	↓	↓	65	↓	↓
Asking Price per Square Foot (based on New Listings)	\$442	↓	↑	↑	↑	\$393	↑	↑
December Sold Price per Square Foot	\$334	↑	↑	↑	↑	\$323	↑	↑
December Month's Supply of Inventory	6.9	↑	↑	↑	↓	7.3	↓	↓
December Sale Price vs List Price Ratio	95.4%	↓	↔	↑	↑	94.8%	↑	↑

\* LM=Last Month / L3M=Last 3 Months / PYM=Same Month Prior Year / LY=Last Year / YTD = Year-to-date

### Property Sales

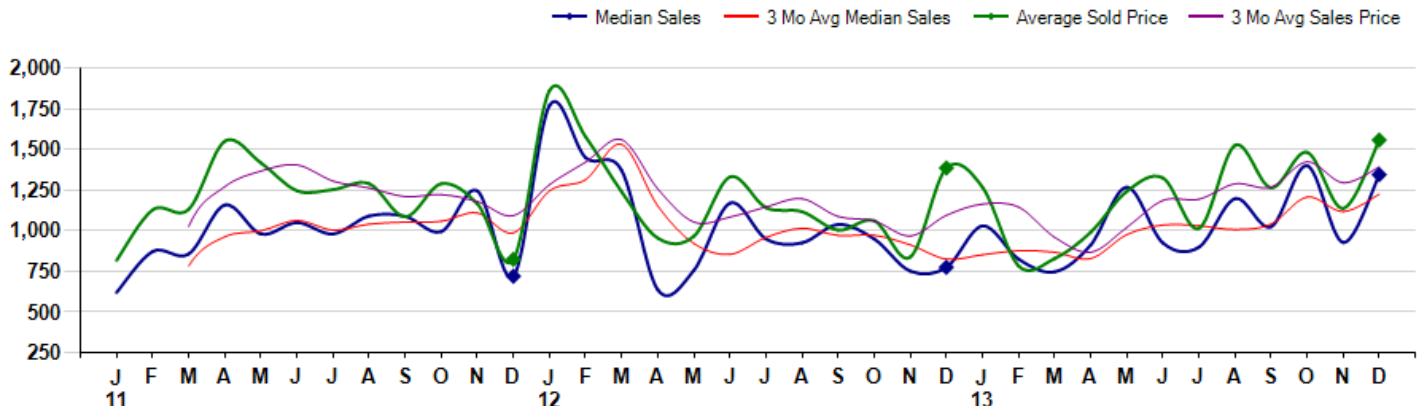
December Property sales were 12, down -52.0% from 25 in December of 2012 and -40.0% lower than the 20 sales last month. December 2013 sales were at their lowest level compared to December of 2012 and 2011. December YTD sales of 277 are running 16.4% ahead of last year's year-to-date sales of 238.



### Prices

The Median Sales Price in December was \$1,345,000, up 73.5% from \$775,000 in December of 2012 and up 45.0% from \$927,500 last month. The Average Sales Price in December was \$1,557,520, up 12.4% from \$1,385,720 in December of 2012 and up 36.9% from \$1,137,776 last month. December 2013 ASP was at highest level compared to December of 2012 and 2011.

Median means Middle (the same # of properties sold above and below Median) (000's)



## MLS Area: Winnetka



**ART WILSON**

Broker, Realtor

847-363-1599

www.NorthShoreHomesOnline.com

Art.Wilson@cbexchange.com



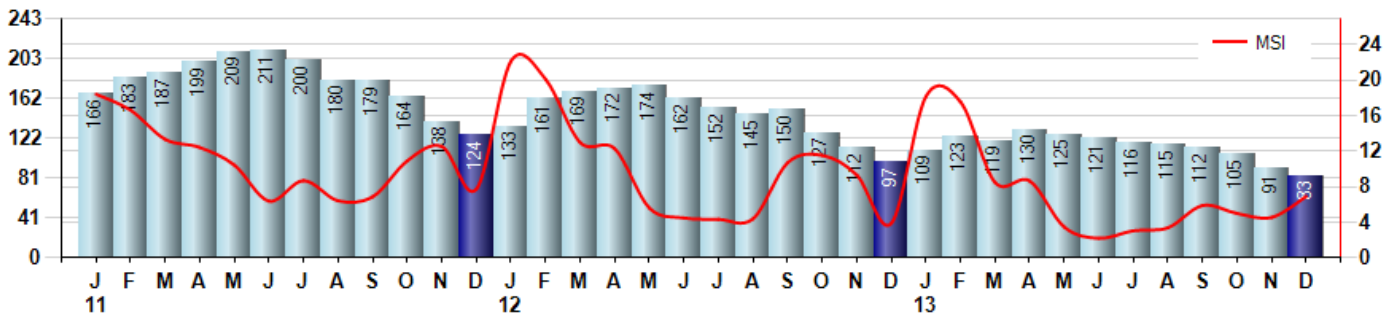
Price Range: \$0 to \$999,999,000 | Properties: Single Family Home, Townhome, Condo

### Inventory & MSI

The Total Inventory of Properties available for sale as of December was 83, down -8.8% from 91 last month and down -14.4% from 97 in December of last year. December 2013 Inventory was at the lowest level compared to December of 2012 and 2011.

A comparatively lower MSI is more beneficial for sellers while a higher MSI is better for buyers. The December 2013 MSI of 6.9 months was at a mid range compared with December of 2012 and 2011.

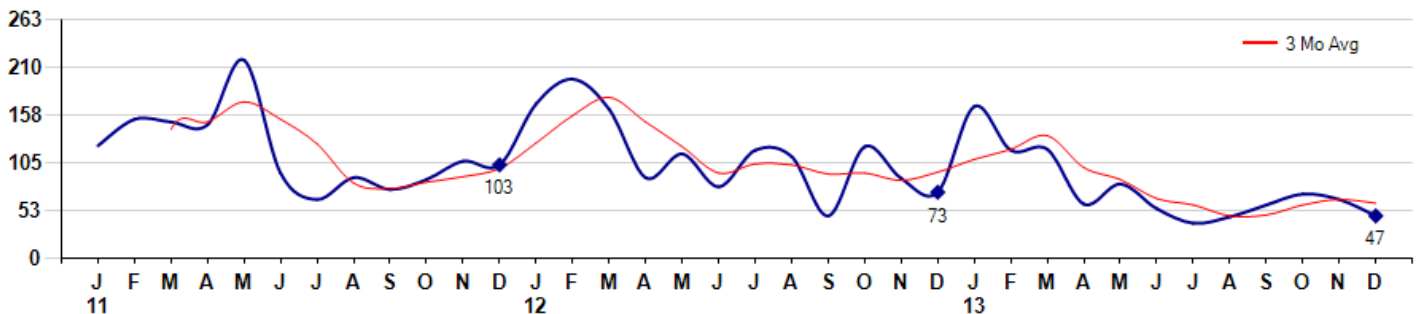
MSI is the # of months needed to sell all of the Inventory at the monthly Sales Pace



### Market Time

The average Days On Market(DOM) shows how many days the average Property is on the Market before it sells. An upward trend in DOM tends to indicate a move towards more of a Buyer's market, a downward trend a move towards more of a Seller's market. The DOM for December was 47, down -27.7% from 65 days last month and down -35.6% from 73 days in December of last year. The December 2013 DOM was at its lowest level compared with December of 2012 and 2011.

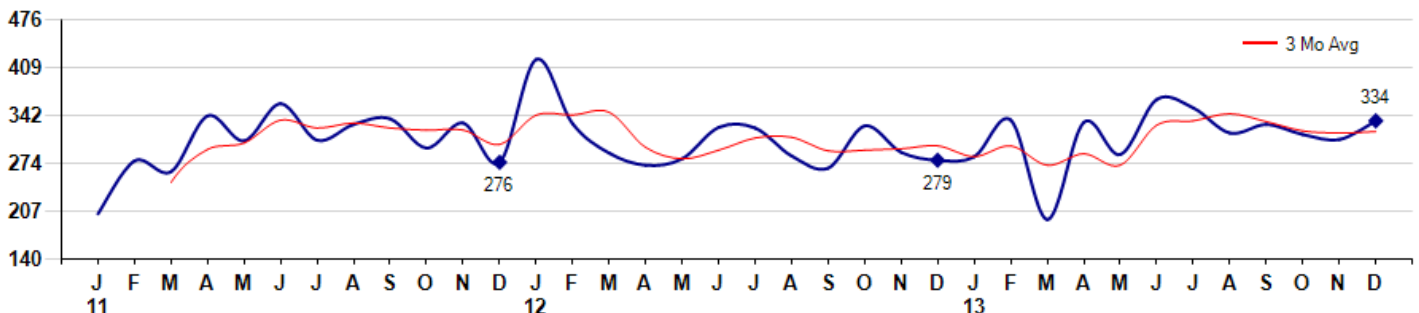
Average Days on Market(Listing to Contract) for properties sold during the month



### Selling Price per Square Foot

The Selling Price per Square Foot is a great indicator for the direction of Property values. Since Median Sales Price and Average Sales price can be impacted by the 'mix' of high or low end Properties in the market, the selling price per square foot is a more normalized indicator on the direction of Property values. The December 2013 Selling Price per Square Foot of \$334 was up 8.4% from \$308 last month and up 19.7% from \$279 in December of last year.

Average Selling Price per Square Foot for properties that sold during the month



© 2014 Coldwell Banker Real Estate LLC. All Rights Reserved. Coldwell Banker Residential Brokerage fully supports the principles of the Fair Housing Act and the Equal Opportunity Act. Coldwell Banker Residential Brokerage is operated by a subsidiary of NRT LLC. Coldwell Banker and the Coldwell Banker Logo are registered service marks owned by Coldwell Banker Real Estate LLC.

Based on information from Midwest Real Estate Data LLC for the period 1/1/2011 through 12/31/2013. Due to MLS reporting methods and allowable reporting policy, this data is only informational and may not be completely accurate. Therefore, Coldwell Banker Residential Brokerage does not guarantee the data accuracy. Data maintained by the MLS's may not reflect all real estate activity in the market.



## MLS Area: Winnetka



**ART WILSON**

Broker, Realtor

847-363-1599

www.NorthShoreHomesOnline.com

Art.Wilson@cbexchange.com

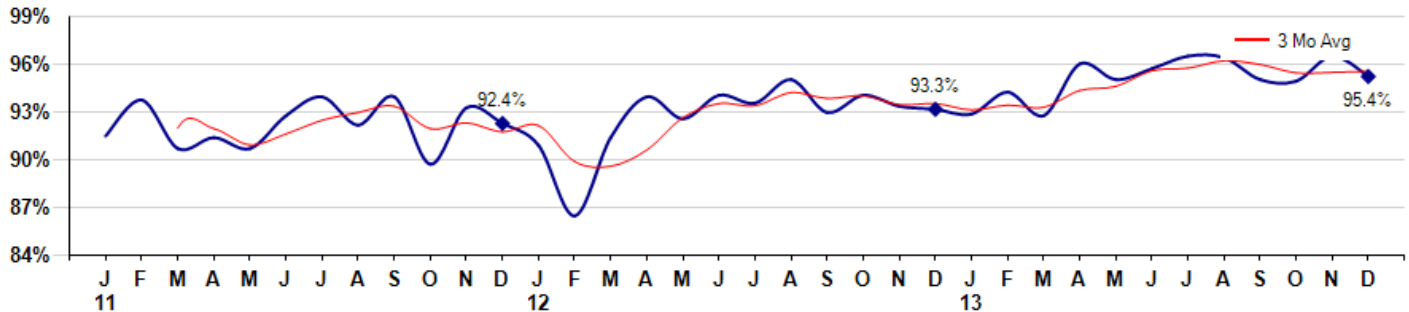


Price Range: \$0 to \$999,999,000 | Properties: Single Family Home, Townhome, Condo

### Selling Price vs Listing Price

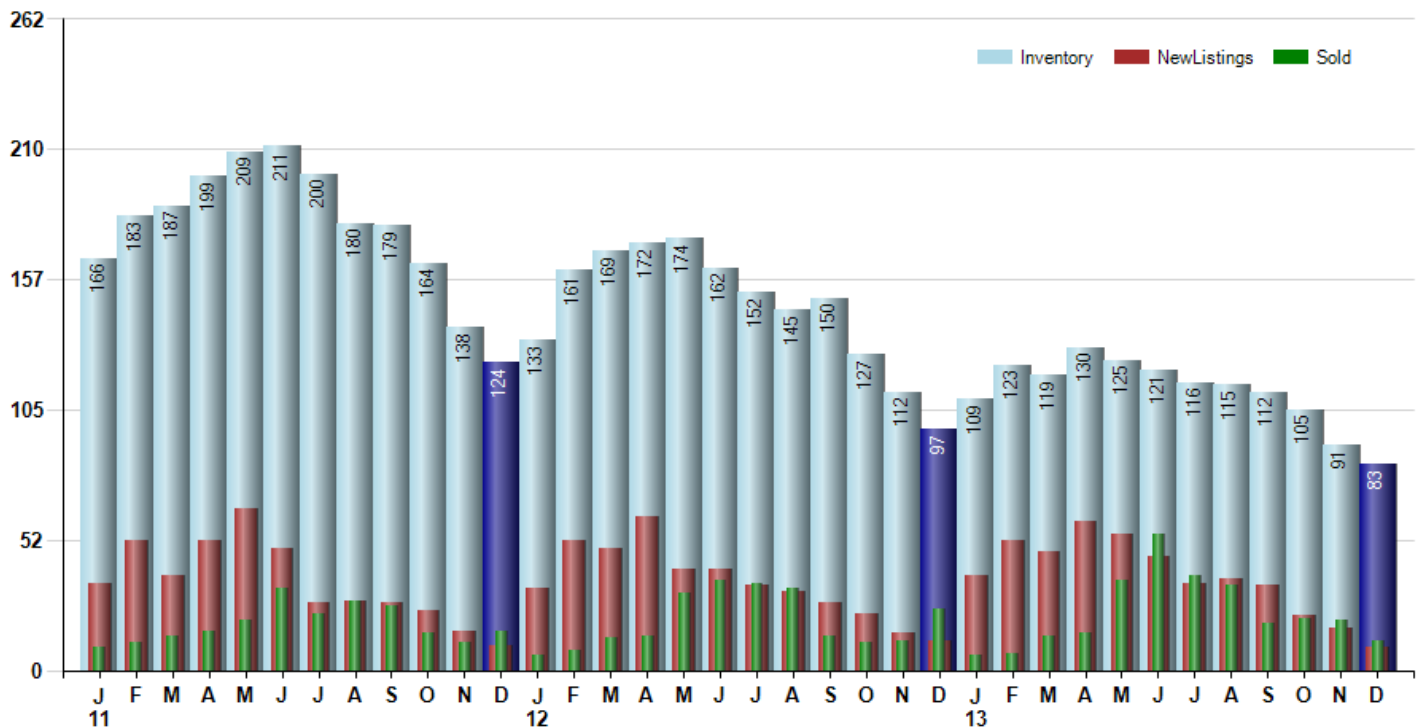
The Selling Price vs Listing Price reveals the average amount that Sellers are agreeing to come down from their list price. The lower the ratio is below 100% the more of a Buyer's market exists, a ratio at or above 100% indicates more of a Seller's market. The December 2013 Selling Price vs List Price of 95.4% was down from 96.7% last month and up from 93.3% in December of last year.

Avg Selling Price divided by Avg Listing Price for sold properties during the month



### Inventory / New Listings / Sales

This last view of the market combines monthly inventory of Properties for sale along with New Listings and Sales. The graph shows the basic annual seasonality of the market as well as the relationship between these items. The number of New Listings in December 2013 was 9, down -47.1% from 17 last month and down -25.0% from 12 in December of last year.



## MLS Area: Winnetka



**ART WILSON**  
 Broker, Realtor  
 847-363-1599  
 www.NorthShoreHomesOnline.com  
 Art.Wilson@cbexchange.com



Price Range: \$0 to \$999,999,000 | Properties: Single Family Home, Townhome, Condo

	J 11	F	M	A	M	J	J	A	S	O	N	D	J 12	F	M	A	M	J	J	A	S	O	N	D	J 13	F	M	A	M	J	J	A	S	O	N	D
Homes Sold	9	11	14	16	20	33	23	28	26	15	11	16	6	8	13	14	31	36	35	33	14	11	12	25	6	7	14	15	36	55	38	34	19	21	20	12
3 Mo. Roll Avg			11	14	17	23	25	28	26	23	17	14	11	10	9	12	19	27	34	35	27	19	12	16	14	13	9	12	22	35	43	42	30	25	20	18

(000's)	J 11	F	M	A	M	J	J	A	S	O	N	D	J 12	F	M	A	M	J	J	A	S	O	N	D	J 13	F	M	A	M	J	J	A	S	O	N	D
Median Sale Price	620	873	858	1,159	980	1,050	980	1,091	1,088	995	1,245	720	1,772	1,450	1,370	636	757	1,170	949	925	1,039	949	751	775	1,030	825	748	912	1,268	925	899	1,198	1,025	1,400	928	1,345
3 Mo. Roll Avg			783	963	999	1,063	1,003	1,040	1,053	1,058	1,109	987	1,246	1,314	1,531	1,152	921	854	959	1,015	971	971	913	825	852	877	868	828	976	1,035	1,030	1,007	1,040	1,208	1,118	1,224

	J 11	F	M	A	M	J	J	A	S	O	N	D	J 12	F	M	A	M	J	J	A	S	O	N	D	J 13	F	M	A	M	J	J	A	S	O	N	D
Inventory	166	183	187	199	209	211	200	180	179	164	138	124	133	161	169	172	174	162	152	145	150	127	112	97	109	123	119	130	125	121	116	115	112	105	91	83
MSI	18	17	13	12	10	6	9	6	7	11	13	8	22	20	13	12	6	5	4	4	11	12	9	4	18	18	9	9	3	2	3	3	6	5	5	7

	J 11	F	M	A	M	J	J	A	S	O	N	D	J 12	F	M	A	M	J	J	A	S	O	N	D	J 13	F	M	A	M	J	J	A	S	O	N	D
Days On Market	124	153	150	147	218	94	65	89	76	87	107	103	170	197	164	89	115	79	119	112	47	123	88	73	167	119	120	60	82	55	39	46	59	71	65	47
3 Mo. Roll Avg			142	150	172	153	126	83	77	84	90	99	127	157	177	150	123	94	104	103	93	94	86	95	109	120	135	100	87	66	59	47	48	59	65	61

	J 11	F	M	A	M	J	J	A	S	O	N	D	J 12	F	M	A	M	J	J	A	S	O	N	D	J 13	F	M	A	M	J	J	A	S	O	N	D
Price per Sq Ft	204	278	263	341	306	358	307	329	337	296	331	276	420	330	289	272	281	325	324	285	268	327	290	279	284	335	196	332	287	364	352	317	329	315	308	334
3 Mo. Roll Avg			248	294	303	335	324	331	324	321	321	301	342	342	346	297	281	293	310	311	292	293	295	299	284	299	272	288	272	328	334	344	333	320	317	319

	J 11	F	M	A	M	J	J	A	S	O	N	D	J 12	F	M	A	M	J	J	A	S	O	N	D	J 13	F	M	A	M	J	J	A	S	O	N	D
Sale to List Price	0.916	0.939	0.908	0.915	0.908	0.929	0.941	0.923	0.941	0.898	0.934	0.924	0.910	0.865	0.915	0.941	0.927	0.942	0.937	0.952	0.931	0.942	0.935	0.933	0.930	0.944	0.929	0.962	0.952	0.959	0.967	0.966	0.952	0.951	0.967	0.954
3 Mo. Roll Avg			0.921	0.921	0.910	0.917	0.926	0.931	0.935	0.921	0.924	0.919	0.923	0.900	0.897	0.907	0.928	0.937	0.935	0.944	0.940	0.942	0.936	0.937	0.933	0.936	0.934	0.945	0.948	0.958	0.959	0.964	0.962	0.956	0.957	0.957

	J 11	F	M	A	M	J	J	A	S	O	N	D	J 12	F	M	A	M	J	J	A	S	O	N	D	J 13	F	M	A	M	J	J	A	S	O	N	D
New Listings	35	52	38	52	65	49	27	28	27	24	16	10	33	52	49	62	41	41	34	32	27	23	15	12	38	52	48	60	55	46	35	37	34	22	17	9
Inventory	166	183	187	199	209	211	200	180	179	164	138	124	133	161	169	172	174	162	152	145	150	127	112	97	109	123	119	130	125	121	116	115	112	105	91	83
Sales	9	11	14	16	20	33	23	28	26	15	11	16	6	8	13	14	31	36	35	33	14	11	12	25	6	7	14	15	36	55	38	34	19	21	20	12

(000's)	J 11	F	M	A	M	J	J	A	S	O	N	D	J 12	F	M	A	M	J	J	A	S	O	N	D	J 13	F	M	A	M	J	J	A	S	O	N	D
Avg Sale Price	818	1,129	1,133	1,551	1,417	1,246	1,253	1,290	1,086	1,289	1,165	824	1,863	1,579	1,239	954	966	1,331	1,142	1,118	1,003	1,061	838	1,386	1,268	783	828	991	1,242	1,325	1,014	1,526	1,264	1,483	1,138	1,558
3 Mo. Roll Avg			1,026	1,271	1,367	1,405	1,305	1,263	1,210	1,222	1,180	1,093	1,284	1,422	1,560	1,257	1,053	1,084	1,146	1,197	1,087	1,061	967	1,095	1,164	1,145	960	867	1,020	1,186	1,194	1,288	1,268	1,424	1,295	1,393

© 2014 Coldwell Banker Real Estate LLC. All Rights Reserved. Coldwell Banker Residential Brokerage fully supports the principles of the Fair Housing Act and the Equal Opportunity Act. Coldwell Banker Residential Brokerage is operated by a subsidiary of NRT LLC. Coldwell Banker and the Coldwell Banker Logo are registered service marks owned by Coldwell Banker Real Estate LLC.

Based on information from Midwest Real Estate Data LLC for the period 1/1/2011 through 12/31/2013. Due to MLS reporting methods and allowable reporting policy, this data is only informational and may not be completely accurate. Therefore, Coldwell Banker Residential Brokerage does not guarantee the data accuracy. Data maintained by the MLS's may not reflect all real estate activity in the market.

