

## MLS Area: Evanston



**ART WILSON**

Broker, Realtor

847-363-1599

www.NorthShoreHomesOnline.com

Art.Wilson@cbexchange.com



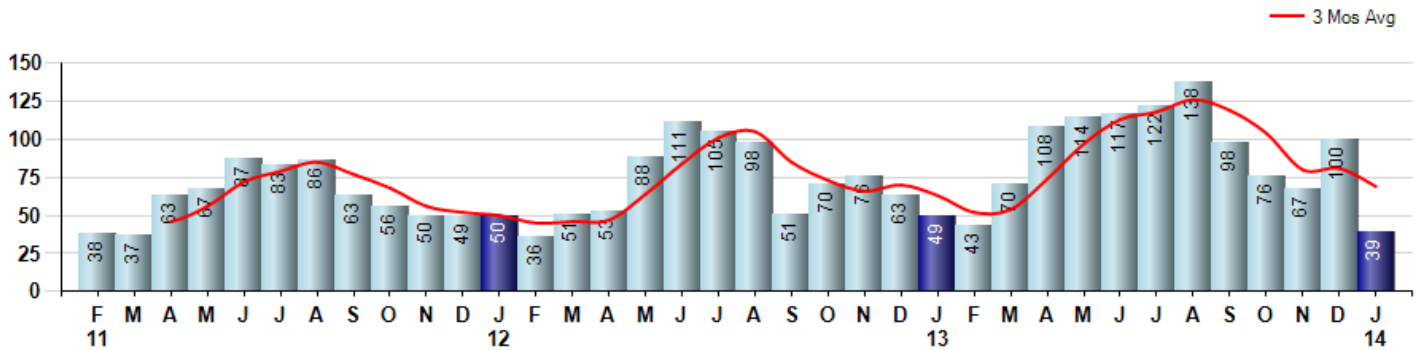
Price Range: \$0 to \$999,999,000 | Properties: Single Family Home, Townhome, Condo

Market Profile & Trends Overview	Month	Trending Versus*:				YTD	Trending Versus*:	
		LM	L3M	PYM	LY		PriorYTD	PriorYear
Median List Price of all Current Listings	\$299,450	↑		↑				
Average List Price of all Current Listings	\$428,489	↑		↑				
January Median Sales Price	\$249,000	↓	↓	↑	↓	\$249,000	↑	↓
January Average Sales Price	\$311,577	↓	↓	↑	↓	\$311,577	↑	↓
Total Properties Currently for Sale (Inventory)	212	↓		↓				
January Number of Properties Sold	39	↓		↓		39	→	
January Average Days on Market (Solds)	104	↑	↑	↑	↑	104	↑	↑
January Month's Supply of Inventory	5.4	↑	↑	↓	↑	5.4	↓	↑
January Sale Price vs List Price Ratio	95.9%	↓	↓	↑	↓	96.1%	↑	↓

\* LM=Last Month / L3M=Last 3 Months / PYM=Same Month Prior Year / LY=Last Year / YTD = Year-to-date

### Property Sales

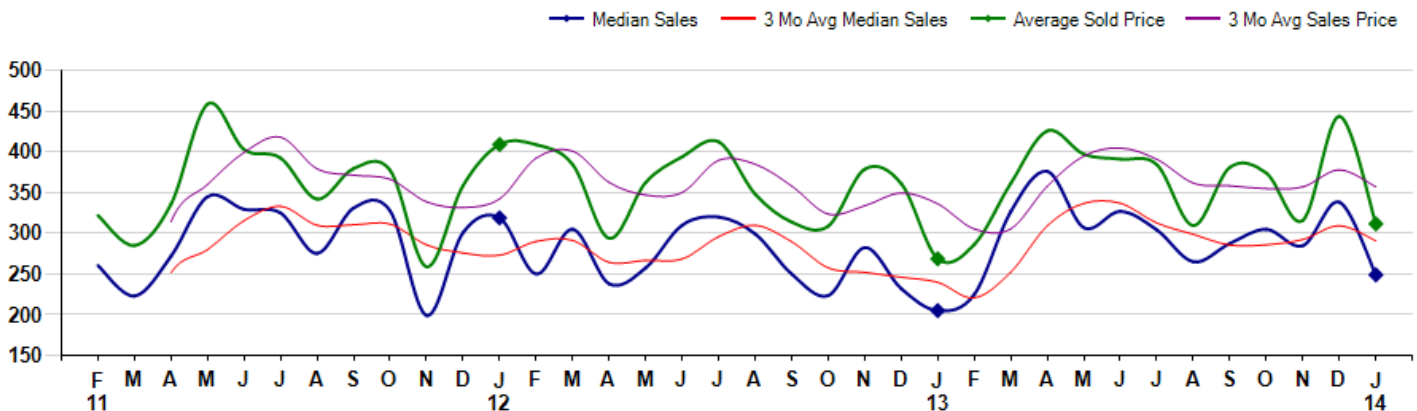
January Property sales were 39, down -20.4% from 49 in January of 2013 and -61.0% lower than the 100 sales last month. January 2014 sales were at their lowest level compared to January of 2013 and 2012. January YTD sales of 39 are running -20.4% behind last year's year-to-date sales of 49.



### Prices

The Median Sales Price in January was \$249,000, up 21.5% from \$205,000 in January of 2013 and down -26.4% from \$338,250 last month. The Average Sales Price in January was \$311,577, up 16.0% from \$268,687 in January of 2013 and down -29.8% from \$443,798 last month. January 2014 ASP was at a mid range compared to January of 2013 and 2012.

Median means Middle (the same # of properties sold above and below Median) (000's)



## MLS Area: Evanston



**ART WILSON**  
 Broker, Realtor  
 847-363-1599  
 www.NorthShoreHomesOnline.com  
 Art.Wilson@cbexchange.com



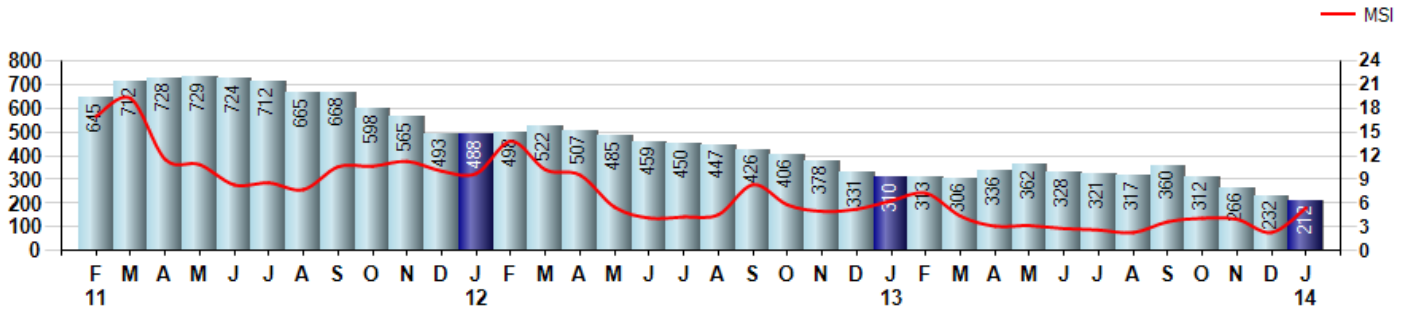
Price Range: \$0 to \$999,999,000 | Properties: Single Family Home, Townhome, Condo

### Inventory & MSI

The Total Inventory of Properties available for sale as of January was 212, down -8.6% from 232 last month and down -31.6% from 310 in January of last year. January 2014 Inventory was at the lowest level compared to January of 2013 and 2012.

A comparatively lower MSI is more beneficial for sellers while a higher MSI is better for buyers. The January 2014 MSI of 5.4 months was at its lowest level compared with January of 2013 and 2012.

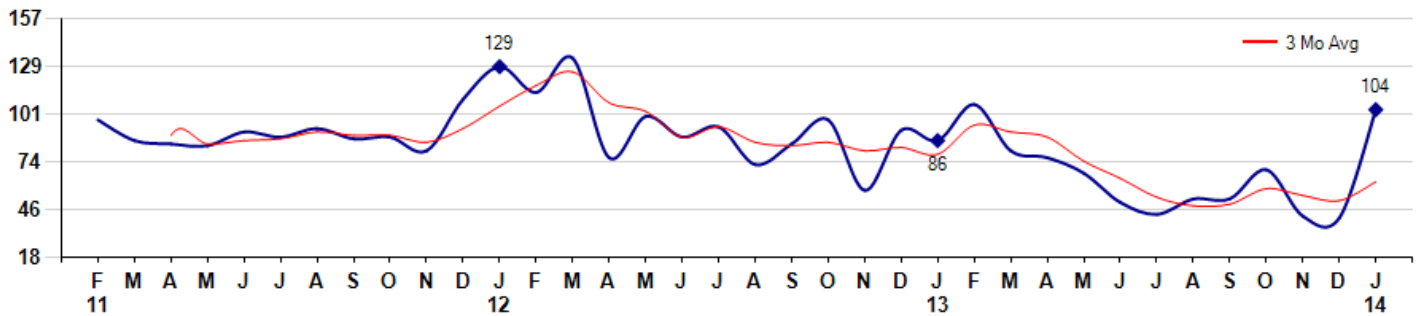
MSI is the # of months needed to sell all of the Inventory at the monthly Sales Pace



### Market Time

The average Days On Market(DOM) shows how many days the average Property is on the Market before it sells. An upward trend in DOM tends to indicate a move towards more of a Buyer's market, a downward trend a move towards more of a Seller's market. The DOM for January was 104, up 153.7% from 41 days last month and up 20.9% from 86 days in January of last year. The January 2014 DOM was at a mid range compared with January of 2013 and 2012.

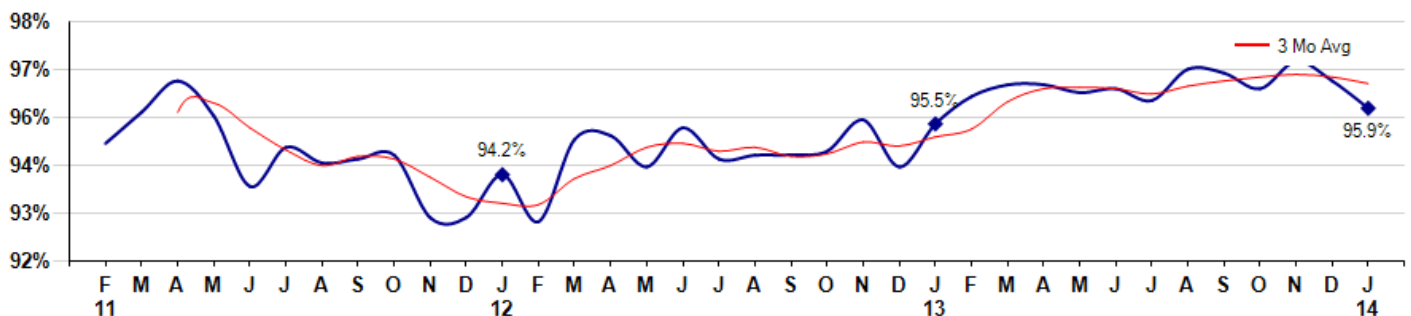
Average Days on Market(Listing to Contract) for properties sold during the month



### Selling Price vs Listing Price

The Selling Price vs Listing Price reveals the average amount that Sellers are agreeing to come down from their list price. The lower the ratio is below 100% the more of a Buyer's market exists, a ratio at or above 100% indicates more of a Seller's market. The January 2014 Selling Price vs List Price of 95.9% was down from 96.6% last month and up from 95.5% in January of last year.

Avg Selling Price divided by Avg Listing Price for sold properties during the month



## MLS Area: Evanston



**ART WILSON**

Broker, Realtor

847-363-1599

[www.NorthShoreHomesOnline.com](http://www.NorthShoreHomesOnline.com)

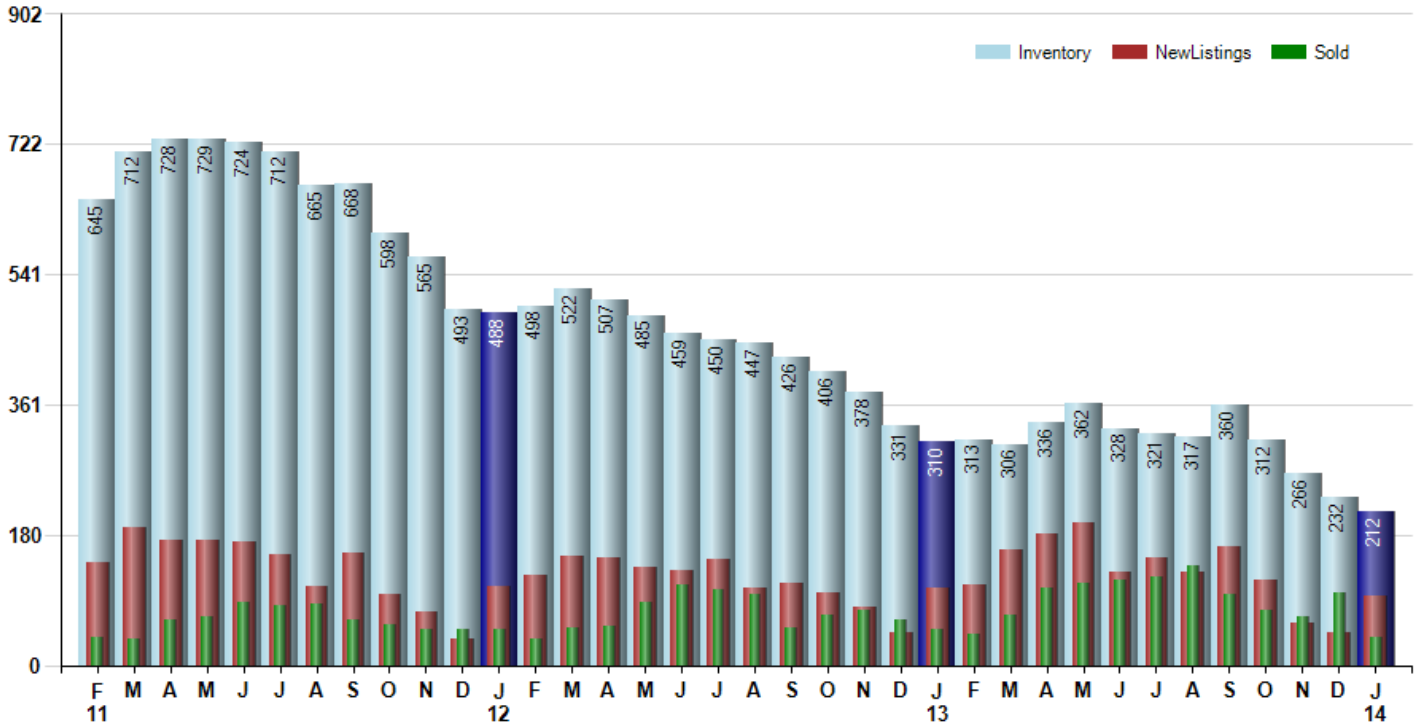
[Art.Wilson@cbexchange.com](mailto:Art.Wilson@cbexchange.com)



Price Range: \$0 to \$999,999,000 | Properties: Single Family Home, Townhome, Condo

### Inventory / New Listings / Sales

This last view of the market combines monthly inventory of Properties for sale along with New Listings and Sales. The graph shows the basic annual seasonality of the market as well as the relationship between these items. The number of New Listings in January 2014 was 97, up 110.9% from 46 last month and down -10.2% from 108 in January of last year.



© 2014 Coldwell Banker Real Estate LLC. All Rights Reserved. Coldwell Banker Residential Brokerage fully supports the principles of the Fair Housing Act and the Equal Opportunity Act. Coldwell Banker Residential Brokerage is operated by a subsidiary of NRT LLC. Coldwell Banker and the Coldwell Banker Logo are registered service marks owned by Coldwell Banker Real Estate LLC.

Based on information from Midwest Real Estate Data LLC for the period 2/1/2011 through 1/31/2014. Due to MLS reporting methods and allowable reporting policy, this data is only informational and may not be completely accurate. Therefore, Coldwell Banker Residential Brokerage does not guarantee the data accuracy. Data maintained by the MLS's may not reflect all real estate activity in the market.



## MLS Area: Evanston



**ART WILSON**  
 Broker, Realtor  
 847-363-1599  
 www.NorthShoreHomesOnline.com  
 Art.Wilson@cbexchange.com



Price Range: \$0 to \$999,999,000 | Properties: Single Family Home, Townhome, Condo

	F 11	M	A	M	J	J	A	S	O	N	D	J 12	F	M	A	M	J	J	A	S	O	N	D	J 13	F	M	A	M	J	J	A	S	O	N	D	J 14
Homes Sold	38	37	63	67	87	83	86	63	56	50	49	50	36	51	53	88	111	105	98	51	70	76	63	49	43	70	108	114	117	122	138	98	76	67	100	39
3 Mo. Roll Avg			46	56	72	79	85	77	68	56	52	50	45	46	47	64	84	101	105	85	73	66	70	63	52	54	74	97	113	118	126	119	104	80	81	69

(000's)	F 11	M	A	M	J	J	A	S	O	N	D	J 12	F	M	A	M	J	J	A	S	O	N	D	J 13	F	M	A	M	J	J	A	S	O	N	D	J 14
Median Sale Price	261	223	272	345	330	325	275	331	328	199	301	319	250	305	238	258	310	320	299	250	224	283	232	205	225	327	376	307	327	304	265	288	305	285	338	249
3 Mo. Roll Avg			252	280	316	333	310	310	311	286	276	273	290	291	264	267	269	296	310	290	258	252	246	240	221	252	309	337	337	313	299	286	286	292	309	291

	F 11	M	A	M	J	J	A	S	O	N	D	J 12	F	M	A	M	J	J	A	S	O	N	D	J 13	F	M	A	M	J	J	A	S	O	N	D	J 14
Inventory	645	712	728	729	724	712	665	668	598	565	493	488	498	522	507	485	459	450	447	426	406	378	331	310	313	306	336	362	328	321	317	360	312	266	232	212
MSI	17	19	12	11	8	9	8	11	11	11	10	10	14	10	10	6	4	4	5	8	6	5	5	6	7	4	3	3	3	3	2	4	4	4	2	5

	F 11	M	A	M	J	J	A	S	O	N	D	J 12	F	M	A	M	J	J	A	S	O	N	D	J 13	F	M	A	M	J	J	A	S	O	N	D	J 14
Days On Market	98	86	84	83	91	88	93	87	88	80	110	129	114	134	76	100	88	94	72	84	98	57	92	86	107	80	76	67	50	43	52	52	69	42	41	104
3 Mo. Roll Avg			89	84	86	87	91	89	89	85	93	106	118	126	108	103	88	94	85	83	85	80	82	78	95	91	88	74	64	53	48	49	58	54	51	62

	F 11	M	A	M	J	J	A	S	O	N	D	J 12	F	M	A	M	J	J	A	S	O	N	D	J 13	F	M	A	M	J	J	A	S	O	N	D	J 14
Price per Sq Ft	136	174	195	209	206	196	195	201	169	166	185	183	174	211	174	167	228	182	204	171	171	190	183	164	158	186	213	202	198	216	201	210	192	205	232	208
3 Mo. Roll Avg			168	193	203	204	199	197	188	179	173	178	181	189	186	184	190	192	205	186	182	177	181	179	168	169	186	200	204	205	205	209	201	202	210	215

	F 11	M	A	M	J	J	A	S	O	N	D	J 12	F	M	A	M	J	J	A	S	O	N	D	J 13	F	M	A	M	J	J	A	S	O	N	D	J 14
Sale to List Price	0.950	0.958	0.966	0.957	0.939	0.949	0.945	0.946	0.947	0.931	0.931	0.942	0.930	0.951	0.952	0.944	0.954	0.946	0.947	0.947	0.948	0.956	0.944	0.955	0.962	0.965	0.965	0.963	0.964	0.961	0.969	0.968	0.964	0.971	0.966	0.959
3 Mo. Roll Avg			0.958	0.960	0.954	0.948	0.944	0.947	0.946	0.941	0.936	0.935	0.934	0.941	0.944	0.949	0.950	0.948	0.949	0.947	0.947	0.950	0.949	0.952	0.954	0.961	0.964	0.964	0.964	0.963	0.965	0.966	0.967	0.968	0.967	0.965

	F 11	M	A	M	J	J	A	S	O	N	D	J 12	F	M	A	M	J	J	A	S	O	N	D	J 13	F	M	A	M	J	J	A	S	O	N	D	J 14
New Listings	143	191	174	173	171	154	109	156	99	75	37	110	125	151	148	136	131	147	108	114	101	80	45	108	112	159	183	198	128	148	128	164	119	58	46	97
Inventory	645	712	728	729	724	712	665	668	598	565	493	488	498	522	507	485	459	450	447	426	406	378	331	310	313	306	336	362	328	321	317	360	312	266	232	212
Sales	38	37	63	67	87	83	86	63	56	50	49	50	36	51	53	88	111	105	98	51	70	76	63	49	43	70	108	114	117	122	138	98	76	67	100	39

(000's)	F 11	M	A	M	J	J	A	S	O	N	D	J 12	F	M	A	M	J	J	A	S	O	N	D	J 13	F	M	A	M	J	J	A	S	O	N	D	J 14
Avg Sale Price	322	285	336	459	403	393	342	380	377	259	359	409	409	385	294	362	394	412	348	314	309	379	361	269	286	362	426	397	391	384	309	381	374	316	444	312
3 Mo. Roll Avg			314	360	399	418	379	371	366	339	332	342	392	401	362	347	350	390	385	358	324	334	350	336	305	305	358	395	405	391	362	358	355	357	378	357

© 2014 Coldwell Banker Real Estate LLC. All Rights Reserved. Coldwell Banker Residential Brokerage fully supports the principles of the Fair Housing Act and the Equal Opportunity Act. Coldwell Banker Residential Brokerage is operated by a subsidiary of NRT LLC. Coldwell Banker and the Coldwell Banker Logo are registered service marks owned by Coldwell Banker Real Estate LLC.

Based on information from Midwest Real Estate Data LLC for the period 2/1/2011 through 1/31/2014. Due to MLS reporting methods and allowable reporting policy, this data is only informational and may not be completely accurate. Therefore, Coldwell Banker Residential Brokerage does not guarantee the data accuracy. Data maintained by the MLS's may not reflect all real estate activity in the market.

