

## MLS Area: Lincolnshire



**ART WILSON**

Broker, Realtor

847-363-1599

www.NorthShoreHomesOnline.com

Art.Wilson@cbexchange.com



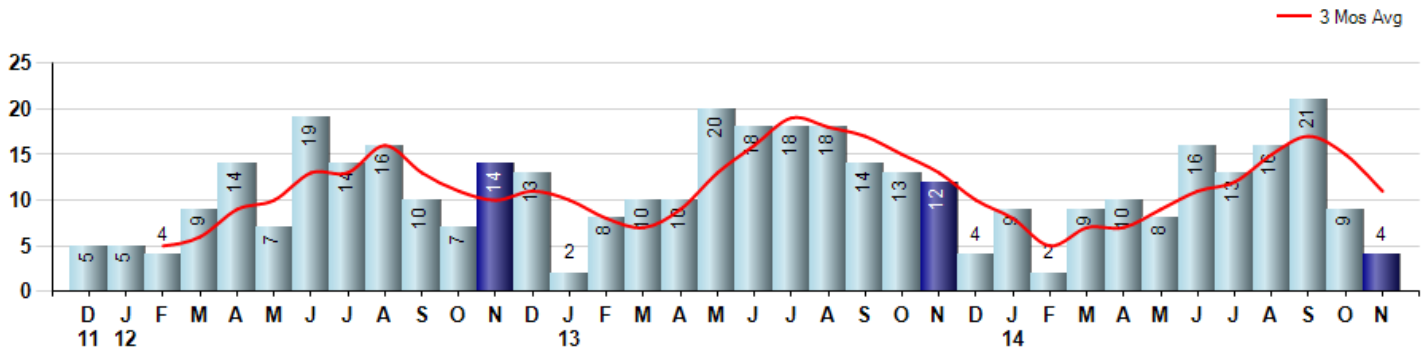
Price Range: \$0 to \$999,999,000 | Properties: Single Family Home, Townhome, Condo

Market Profile & Trends Overview	Month	Trending Versus*:				YTD	Trending Versus*:	
		LM	L3M	PYM	LY		PriorYTD	PriorYear
Median List Price of all Current Listings	\$614,000	↓		↑				
Average List Price of all Current Listings	\$682,085	↑		↔				
November Median Sales Price	\$481,750	↓	↓	↑	↑	\$474,500	↑	↑
November Average Sales Price	\$441,375	↓	↓	↓	↓	\$492,558	↑	↔
Total Properties Currently for Sale (Inventory)	62	↓		↑				
November Number of Properties Sold	4	↓		↓		117	↓	
November Average Days on Market (Solds)	27	↓	↓	↓	↓	62	↓	↓
November Month's Supply of Inventory	15.5	↑	↑	↑	↑	7.8	↑	↑
November Sale Price vs List Price Ratio	97.0%	↑	↑	↑	↑	96.0%	↑	↑

\* LM=Last Month / L3M=Last 3 Months / PYM=Same Month Prior Year / LY=Last Year / YTD = Year-to-date

### Property Sales

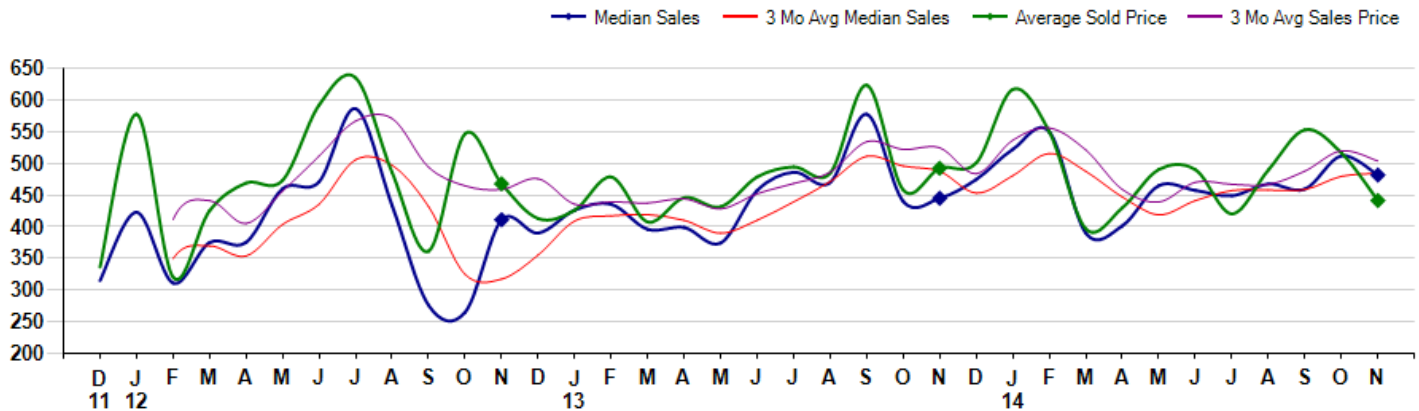
November Property sales were 4, down -66.7% from 12 in November of 2013 and -55.6% lower than the 9 sales last month. November 2014 sales were at their lowest level compared to November of 2013 and 2012. November YTD sales of 117 are running -18.2% behind last year's year-to-date sales of 143.



### Prices

The Median Sales Price in November was \$481,750, up 8.3% from \$445,000 in November of 2013 and down -5.9% from \$512,000 last month. The Average Sales Price in November was \$441,375, down -10.4% from \$492,417 in November of 2013 and down -14.6% from \$516,767 last month. November 2014 ASP was at the lowest level compared to November of 2013 and 2012.

Median means Middle (the same # of properties sold above and below Median) (000's)



## MLS Area: Lincolnshire



**ART WILSON**  
Broker, Realtor  
847-363-1599  
www.NorthShoreHomesOnline.com  
Art.Wilson@cbexchange.com



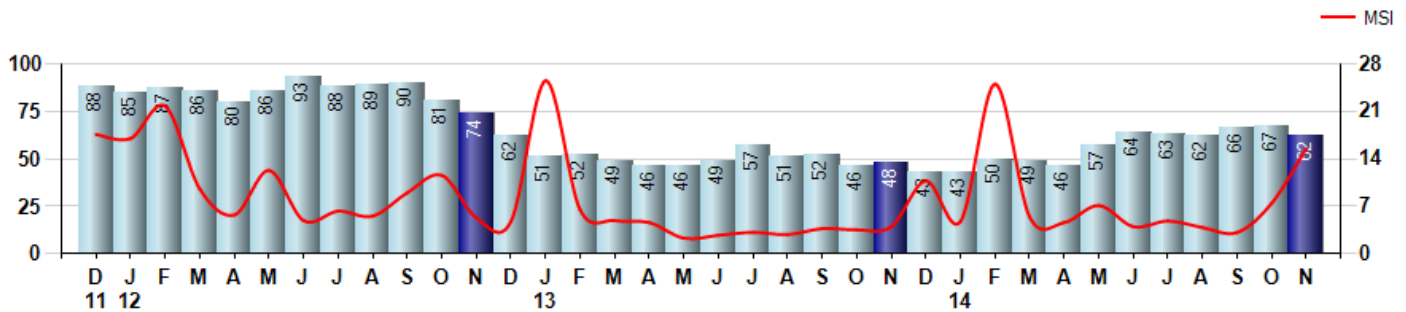
Price Range: \$0 to \$999,999,000 | Properties: Single Family Home, Townhome, Condo

### Inventory & MSI

The Total Inventory of Properties available for sale as of November was 62, down -7.5% from 67 last month and up 29.2% from 48 in November of last year. November 2014 Inventory was at a mid range compared to November of 2013 and 2012.

A comparatively lower MSI is more beneficial for sellers while a higher MSI is better for buyers. The November 2014 MSI of 15.5 months was at its highest level compared with November of 2013 and 2012.

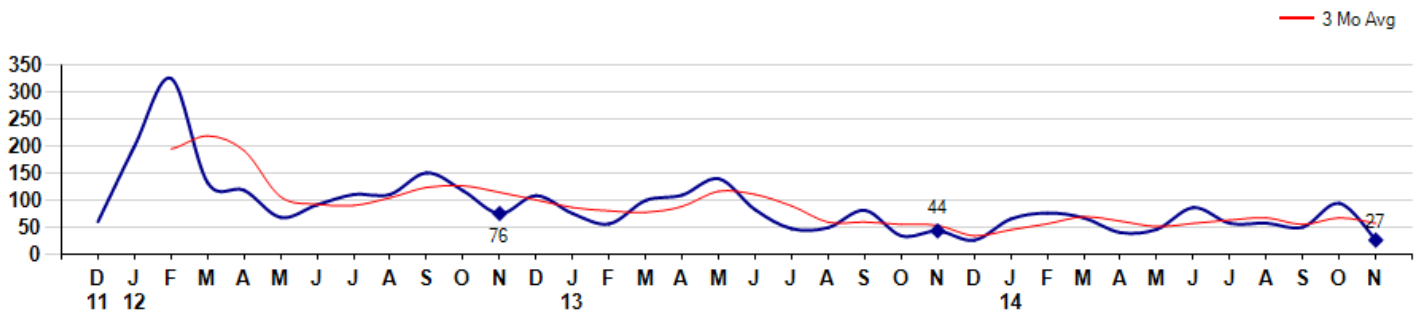
MSI is the # of months needed to sell all of the Inventory at the monthly Sales Pace



### Market Time

The average Days On Market(DOM) shows how many days the average Property is on the Market before it sells. An upward trend in DOM tends to indicate a move towards more of a Buyer's market, a downward trend a move towards more of a Seller's market. The DOM for November was 27, down -71.6% from 95 days last month and down -38.6% from 44 days in November of last year. The November 2014 DOM was at its lowest level compared with November of 2013 and 2012.

Average Days on Market(Listing to Contract) for properties sold during the month



## MLS Area: Lincolnshire



**ART WILSON**

Broker, Realtor

847-363-1599

www.NorthShoreHomesOnline.com

Art.Wilson@cbexchange.com

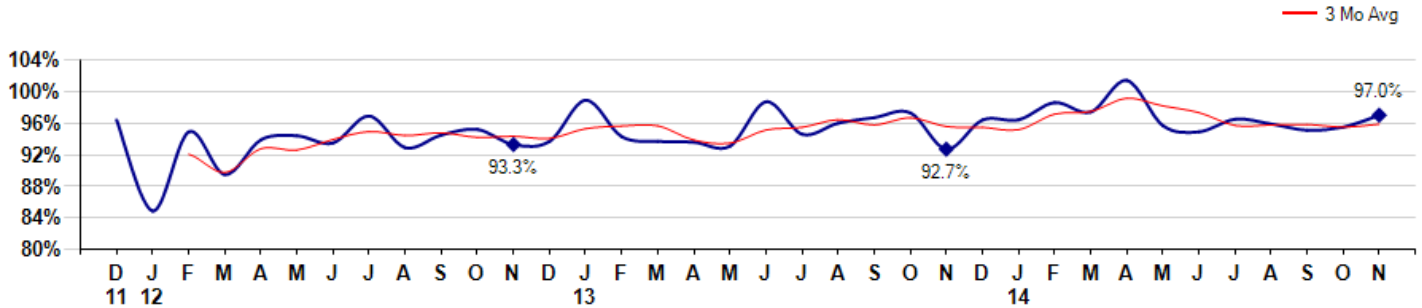


Price Range: \$0 to \$999,999,000 | Properties: Single Family Home, Townhome, Condo

### Selling Price vs Listing Price

The Selling Price vs Listing Price reveals the average amount that Sellers are agreeing to come down from their list price. The lower the ratio is below 100% the more of a Buyer's market exists, a ratio at or above 100% indicates more of a Seller's market. The November 2014 Selling Price vs List Price of 97.0% was up from 95.5% last month and up from 92.7% in November of last year.

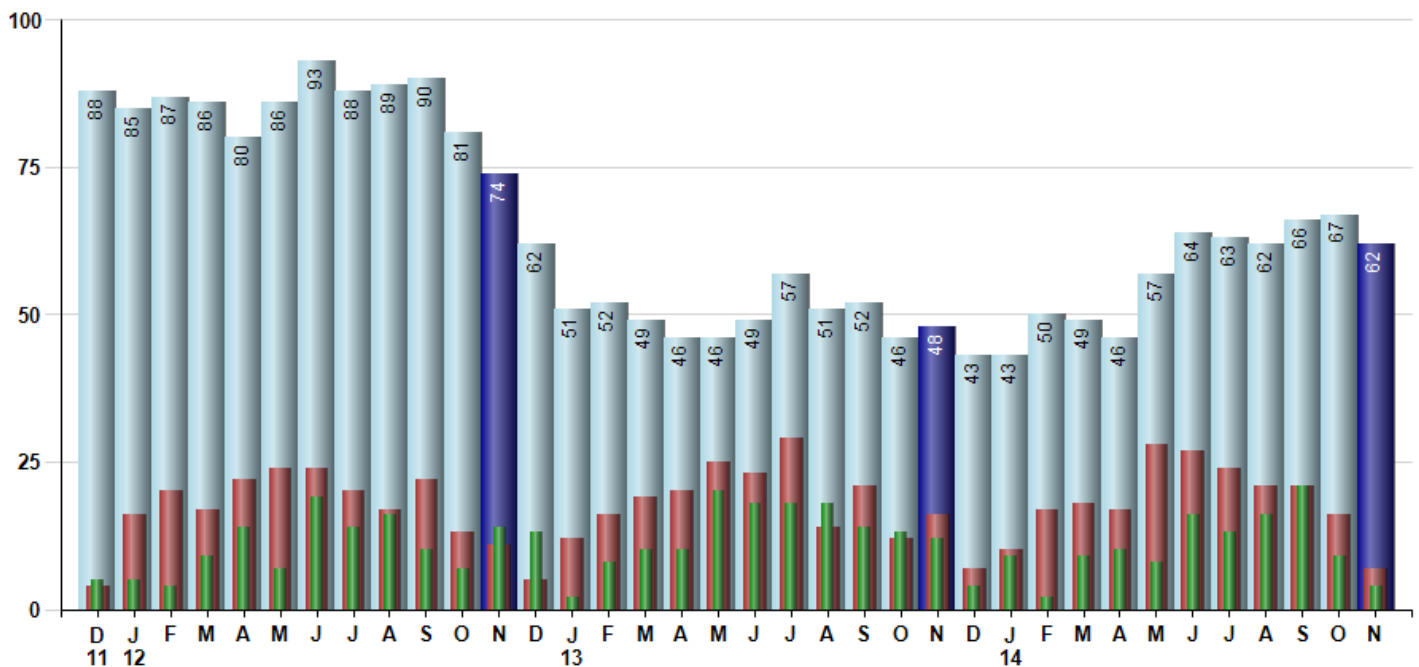
Avg Selling Price divided by Avg Listing Price for sold properties during the month



### Inventory / New Listings / Sales

This last view of the market combines monthly inventory of Properties for sale along with New Listings and Sales. The graph shows the basic annual seasonality of the market as well as the relationship between these items. The number of New Listings in November 2014 was 7, down -56.3% from 16 last month and down -56.3% from 16 in November of last year.

Inventory    New Listings    Sold



© 2014 Coldwell Banker Real Estate LLC. All Rights Reserved. Coldwell Banker Residential Brokerage fully supports the principles of the Fair Housing Act and the Equal Opportunity Act. Coldwell Banker Residential Brokerage is operated by a subsidiary of NRT LLC. Coldwell Banker and the Coldwell Banker Logo are registered service marks owned by Coldwell Banker Real Estate LLC.

Based on information from Midwest Real Estate Data LLC for the period 12/1/2011 through 11/30/2014. Due to MLS reporting methods and allowable reporting policy, this data is only informational and may not be completely accurate. Therefore, Coldwell Banker Residential Brokerage does not guarantee the data accuracy. Data maintained by the MLS's may not reflect all real estate activity in the market.



## MLS Area: Lincolnshire



**ART WILSON**  
 Broker, Realtor  
 847-363-1599  
 www.NorthShoreHomesOnline.com  
 Art.Wilson@cbexchange.com



Price Range: \$0 to \$999,999,000 | Properties: Single Family Home, Townhome, Condo

	D 11	J 12	F	M	A	M	J	J	A	S	O	N	D	J 13	F	M	A	M	J	J	A	S	O	N	D	J 14	F	M	A	M	J	J	A	S	O	N
Homes Sold	5	5	4	9	14	7	19	14	16	10	7	14	13	2	8	10	10	20	18	18	18	14	13	12	4	9	2	9	10	8	16	13	16	21	9	4
3 Mo. Roll Avg			5	6	9	10	13	13	16	13	11	10	11	10	8	7	9	13	16	19	18	17	15	13	10	8	5	7	7	9	11	12	15	17	15	11

(000's)	D 11	J 12	F	M	A	M	J	J	A	S	O	N	D	J 13	F	M	A	M	J	J	A	S	O	N	D	J 14	F	M	A	M	J	J	A	S	O	N
Median Sale Price	315	423	311	375	375	460	471	587	434	276	265	411	390	426	436	396	399	375	458	486	470	578	440	445	475	523	550	390	402	465	458	449	468	460	512	482
3 Mo. Roll Avg			350	370	354	403	435	506	497	432	325	317	355	409	417	419	410	390	410	439	471	511	496	488	453	481	516	488	447	419	441	457	458	459	480	484

	D 11	J 12	F	M	A	M	J	J	A	S	O	N	D	J 13	F	M	A	M	J	J	A	S	O	N	D	J 14	F	M	A	M	J	J	A	S	O	N
Inventory	88	85	87	86	80	86	93	88	89	90	81	74	62	51	52	49	46	46	49	57	51	52	46	48	43	43	50	49	46	57	64	63	62	66	67	62
MSI	18	17	22	10	6	12	5	6	6	9	12	5	5	26	7	5	5	2	3	3	3	4	4	4	11	5	25	5	5	7	4	5	4	3	7	16

	D 11	J 12	F	M	A	M	J	J	A	S	O	N	D	J 13	F	M	A	M	J	J	A	S	O	N	D	J 14	F	M	A	M	J	J	A	S	O	N
Days On Market	61	200	325	133	119	69	92	111	111	151	118	76	109	76	57	100	110	140	83	48	50	82	35	44	27	66	77	68	41	47	87	58	58	51	95	27
3 Mo. Roll Avg			195	219	192	107	93	91	105	124	127	115	101	87	81	78	89	117	111	90	60	60	56	54	35	46	57	70	62	52	58	64	68	56	68	58

	D 11	J 12	F	M	A	M	J	J	A	S	O	N	D	J 13	F	M	A	M	J	J	A	S	O	N	D	J 14	F	M	A	M	J	J	A	S	O	N
Price per Sq Ft	123	137	142	125	153	182	177	192	171	152	154	160	158	171	153	141	159	158	165	174	184	190	170	167	193	176	174	167	174	180	174	162	187	198	186	157
3 Mo. Roll Avg			134	135	140	153	171	184	180	172	159	155	157	163	161	155	151	153	161	166	174	183	181	176	177	179	181	172	172	174	176	172	174	182	190	180

	D 11	J 12	F	M	A	M	J	J	A	S	O	N	D	J 13	F	M	A	M	J	J	A	S	O	N	D	J 14	F	M	A	M	J	J	A	S	O	N
Sale to List Price	0.964	0.849	0.949	0.895	0.939	0.944	0.935	0.969	0.929	0.945	0.952	0.933	0.937	0.989	0.943	0.937	0.936	0.931	0.987	0.946	0.960	0.967	0.973	0.927	0.964	0.964	0.986	0.974	1.014	0.957	0.949	0.965	0.959	0.951	0.955	0.970
3 Mo. Roll Avg			0.921	0.898	0.928	0.926	0.939	0.949	0.944	0.948	0.942	0.943	0.941	0.953	0.956	0.956	0.939	0.935	0.951	0.955	0.964	0.958	0.967	0.956	0.955	0.952	0.971	0.975	0.991	0.982	0.973	0.957	0.958	0.958	0.955	0.959

	D 11	J 12	F	M	A	M	J	J	A	S	O	N	D	J 13	F	M	A	M	J	J	A	S	O	N	D	J 14	F	M	A	M	J	J	A	S	O	N
New Listings	4	16	20	17	22	24	24	20	17	22	13	11	5	12	16	19	20	25	23	29	14	21	12	16	7	10	17	18	17	28	27	24	21	21	16	7
Inventory	88	85	87	86	80	86	93	88	89	90	81	74	62	51	52	49	46	46	49	57	51	52	46	48	43	43	50	49	46	57	64	63	62	66	67	62
Sales	5	5	4	9	14	7	19	14	16	10	7	14	13	2	8	10	10	20	18	18	18	14	13	12	4	9	2	9	10	8	16	13	16	21	9	4

(000's)	D 11	J 12	F	M	A	M	J	J	A	S	O	N	D	J 13	F	M	A	M	J	J	A	S	O	N	D	J 14	F	M	A	M	J	J	A	S	O	N
Avg Sale Price	336	578	321	425	469	473	592	635	486	361	547	468	413	426	479	408	446	432	479	495	485	624	458	492	501	617	550	397	430	491	490	420	490	553	517	441
3 Mo. Roll Avg			412	441	405	456	512	567	571	494	465	459	476	436	439	438	444	428	452	468	486	534	522	525	484	537	556	521	459	439	470	467	467	488	520	504

© 2014 Coldwell Banker Real Estate LLC. All Rights Reserved. Coldwell Banker Residential Brokerage fully supports the principles of the Fair Housing Act and the Equal Opportunity Act. Coldwell Banker Residential Brokerage is operated by a subsidiary of NRT LLC. Coldwell Banker and the Coldwell Banker Logo are registered service marks owned by Coldwell Banker Real Estate LLC.

Based on information from Midwest Real Estate Data LLC for the period 12/1/2011 through 11/30/2014. Due to MLS reporting methods and allowable reporting policy, this data is only informational and may not be completely accurate. Therefore, Coldwell Banker Residential Brokerage does not guarantee the data accuracy. Data maintained by the MLS's may not reflect all real estate activity in the market.

