

MLS Area: Wilmette

No Photo Available

ART WILSON

Broker, Realtor

847-363-1599

Art.Wilson@cbexchange.com



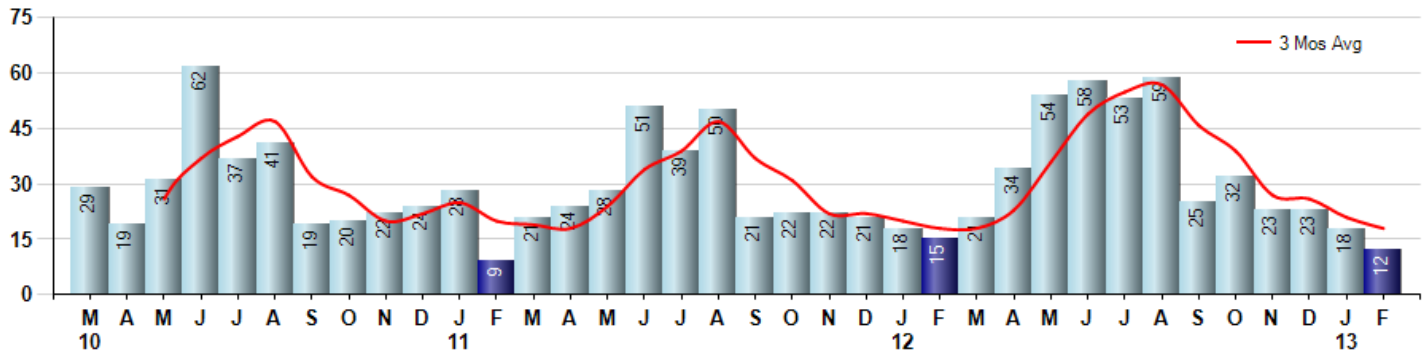
Price Range: \$0 to \$999,999,000 | Properties: Single Family Home, Townhome, Condo

Market Profile & Trends Overview	Month	Trending Versus*:				YTD	Trending Versus*:	
		LM	L3M	PYM	LY		PriorYTD	PriorYear
Median List Price of all Current Listings	\$622,000	↑		↑				
Average List Price of all Current Listings	\$721,741	↑		↑				
February Median Sales Price	\$340,000	↓	↓	↓	↓	\$465,375	↓	↓
February Average Sales Price	\$549,500	↑	↑	↑	↓	\$512,799	↓	↓
Total Properties Currently for Sale (Inventory)	108	↓		↓				
February Number of Properties Sold	12	↓		↓		30	↓	
February Average Days on Market (Solds)	99	↓	↑	↓	↑	105	↓	↑
February Month's Supply of Inventory	9.0	↑	↑	↓	↑	7.8	↓	↑
February Sale Price vs List Price Ratio	95.0%	↓	↓	↑	↑	95.3%	↑	↑

* LM=Last Month / L3M=Last 3 Months / PYM=Same Month Prior Year / LY=Last Year / YTD = Year-to-date

Property Sales

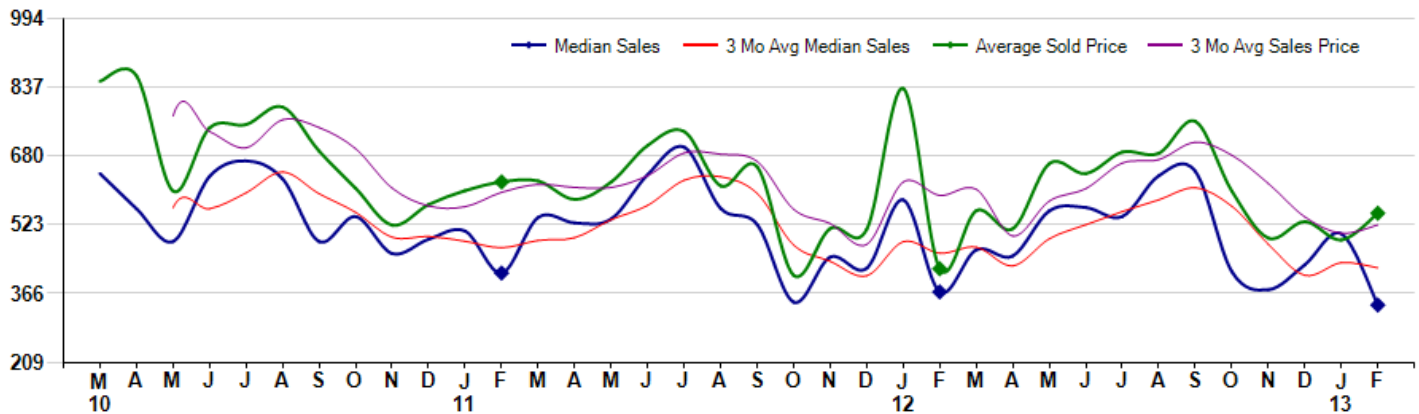
February Property sales were 12, down -20.0% from 15 in February of 2012 and -33.3% lower than the 18 sales last month. February 2013 sales were at a mid level compared to February of 2012 and 2011. February YTD sales of 30 are running -9.1% behind last year's year-to-date sales of 33.



Prices

The Median Sales Price in February was \$340,000, down -8.1% from \$370,000 in February of 2012 and down -32.3% from \$502,500 last month. The Average Sales Price in February was \$549,500, up 30.0% from \$422,767 in February of 2012 and up 12.5% from \$488,331 last month. February 2013 ASP was at a mid range compared to February of 2012 and 2011.

Median means Middle (the same # of properties sold above and below Median) (000's)



MLS Area: Wilmette

No Photo Available

ART WILSON

Broker, Realtor

847-363-1599

Art.Wilson@cbexchange.com



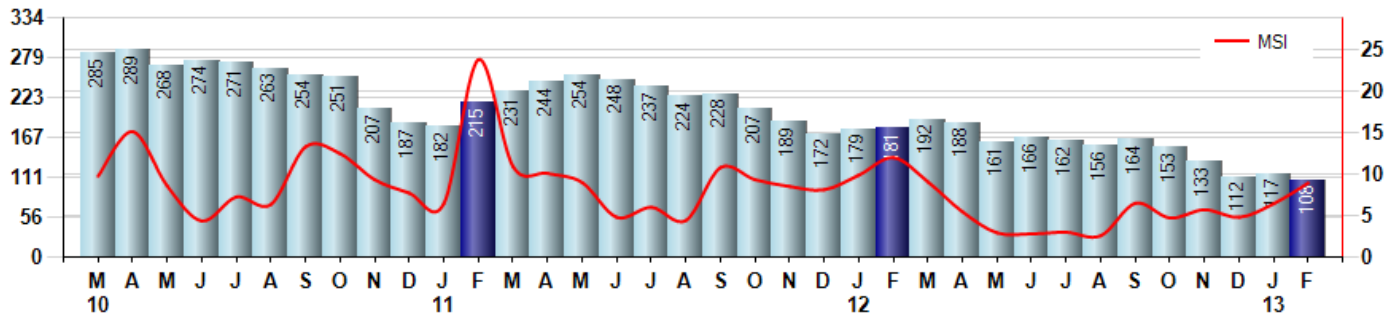
Price Range: \$0 to \$999,999,000 | Properties: Single Family Home, Townhome, Condo

Inventory & MSI

The Total Inventory of Properties available for sale as of February was 108, down -7.7% from 117 last month and down -40.3% from 181 in February of last year. February 2013 Inventory was at the lowest level compared to February of 2012 and 2011.

A comparatively lower MSI is more beneficial for sellers while a higher MSI is better for buyers. The February 2013 MSI of 9.0 months was at its lowest level compared with February of 2012 and 2011.

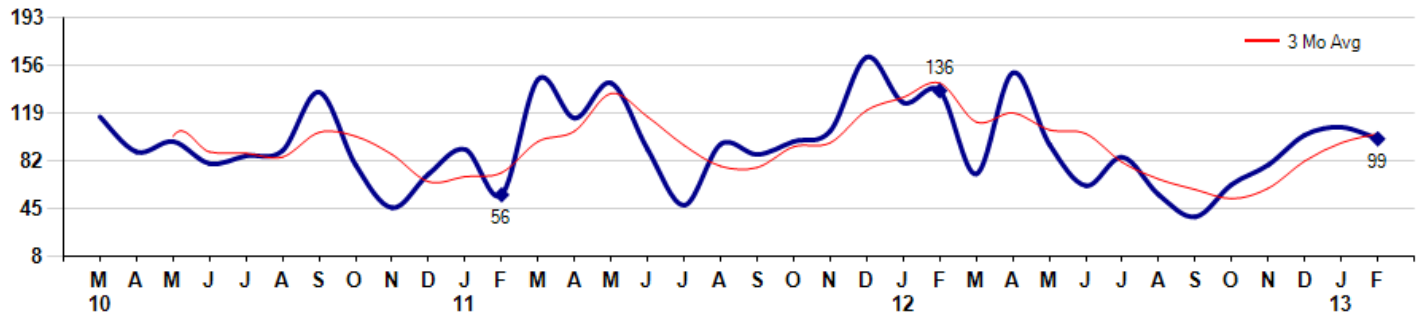
MSI is the # of months needed to sell all of the Inventory at the monthly Sales Pace



Market Time

The average Days On Market (DOM) shows how many days the average Property is on the Market before it sells. An upward trend in DOM tends to indicate a move towards more of a Buyer's market, a downward trend a move towards more of a Seller's market. The DOM for February was 99, down -8.3% from 108 days last month and down -27.2% from 136 days in February of last year. The February 2013 DOM was at a mid range compared with February of 2012 and 2011.

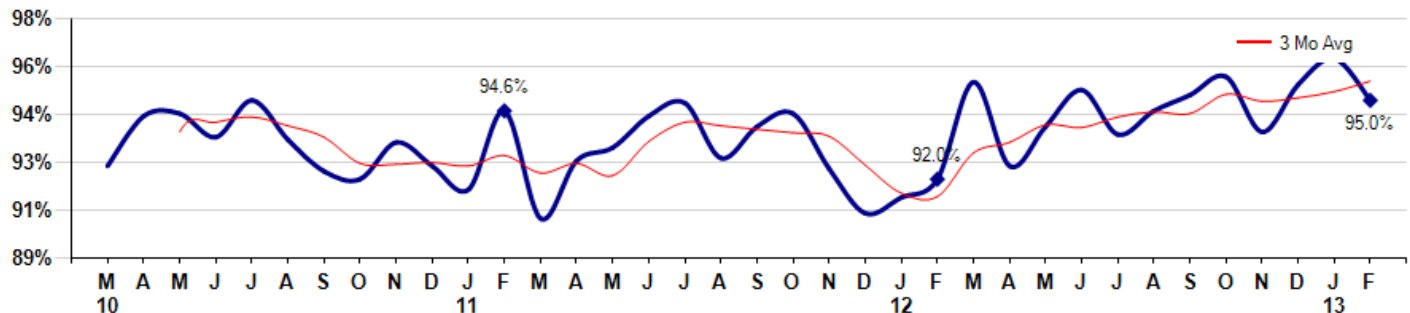
Average Days on Market (Listing to Contract) for properties sold during the month



Selling Price vs Listing Price

The Selling Price vs Listing Price reveals the average amount that Sellers are agreeing to come down from their list price. The lower the ratio is below 100% the more of a Buyer's market exists, a ratio at or above 100% indicates more of a Seller's market. The February 2013 Selling Price vs List Price of 95.0% was down from 96.6% last month and up from 92.0% in February of last year.

Avg Selling Price divided by Avg Listing Price for sold properties during the month



Based on information from Midwest Real Estate Data LLC for the period 3/1/2010 through 2/28/2013. Due to MLS reporting methods and allowable reporting policy, this data is only informational and may not be completely accurate. Therefore, Coldwell Banker Residential Brokerage does not guarantee the data accuracy. Data maintained by the MLS's may not reflect all real estate activity in the market.



MLS Area: Wilmette

No Photo Available

ART WILSON

Broker, Realtor

847-363-1599

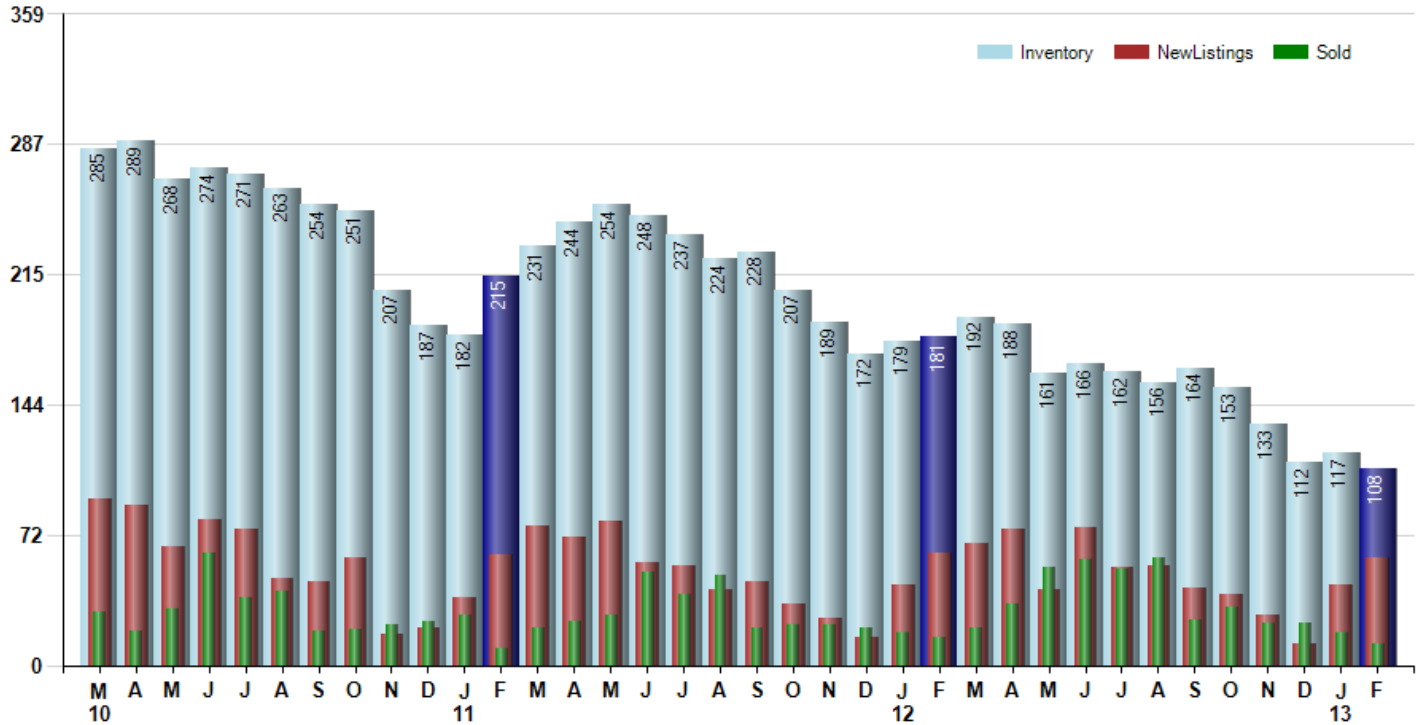
Art.Wilson@cbexchange.com



Price Range: \$0 to \$999,999,000 | Properties: Single Family Home, Townhome, Condo

Inventory / New Listings / Sales

This last view of the market combines monthly inventory of Properties for sale along with New Listings and Sales. The graph shows the basic annual seasonality of the market as well as the relationship between these items. The number of New Listings in February 2013 was 59, up 34.1% from 44 last month and down -4.8% from 62 in February of last year.



Based on information from Midwest Real Estate Data LLC for the period 3/1/2010 through 2/28/2013. Due to MLS reporting methods and allowable reporting policy, this data is only informational and may not be completely accurate. Therefore, Coldwell Banker Residential Brokerage does not guarantee the data accuracy. Data maintained by the MLS's may not reflect all real estate activity in the market.



MARKET ACTION REPORT

February 2013

MLS Area: Wilmette

No Photo Available

ART WILSON

Broker, Realtor

847-363-1599

Art.Wilson@cbexchange.com



Price Range: \$0 to \$999,999,000 | Properties: Single Family Home, Townhome, Condo

	M 10	A	M	J	J	A	S	O	N	D	J 11	F	M	A	M	J	J	A	S	O	N	D	J 12	F	M	A	M	J	J	A	S	O	N	D	J 13	F
Homes Sold	29	19	31	62	37	41	19	20	22	24	28	9	21	24	28	51	39	50	21	22	22	21	18	15	21	34	54	58	53	59	25	32	23	23	18	12
3 Mo. Roll Avg			26	37	43	47	32	27	20	22	25	20	19	18	24	34	39	47	37	31	22	22	20	18	18	23	36	49	55	57	46	39	27	26	21	18

	(000's) M 10	A	M	J	J	A	S	O	N	D	J 11	F	M	A	M	J	J	A	S	O	N	D	J 12	F	M	A	M	J	J	A	S	O	N	D	J 13	F
Median Sale Price	640	560	485	633	669	628	485	542	458	490	509	413	540	527	536	638	700	560	524	347	449	424	580	370	466	452	555	563	542	635	645	416	375	432	503	340
3 Mo. Roll Avg			562	559	596	643	594	552	495	496	485	471	487	493	535	567	625	633	595	477	440	407	484	458	472	429	491	523	553	580	607	565	479	408	437	425

	M 10	A	M	J	J	A	S	O	N	D	J 11	F	M	A	M	J	J	A	S	O	N	D	J 12	F	M	A	M	J	J	A	S	O	N	D	J 13	F
Inventory	285	289	268	274	271	263	254	251	207	187	182	215	231	244	254	248	237	224	228	207	189	172	179	181	192	188	161	166	162	156	164	153	133	112	117	108
MSI	10	15	9	4	7	6	13	13	9	8	7	24	11	10	9	5	6	4	11	9	9	8	10	12	9	6	3	3	3	3	7	5	6	5	7	9

	M 10	A	M	J	J	A	S	O	N	D	J 11	F	M	A	M	J	J	A	S	O	N	D	J 12	F	M	A	M	J	J	A	S	O	N	D	J 13	F
Days On Market	116	89	97	80	86	90	135	79	46	72	91	56	145	115	142	91	48	95	87	97	105	162	127	136	72	150	95	63	85	56	39	64	79	102	108	99
3 Mo. Roll Avg			101	89	88	85	104	101	87	66	70	73	97	105	134	116	94	78	77	93	96	121	131	142	112	119	106	103	81	68	60	53	61	82	96	103

	M 10	A	M	J	J	A	S	O	N	D	J 11	F	M	A	M	J	J	A	S	O	N	D	J 12	F	M	A	M	J	J	A	S	O	N	D	J 13	F
Price per Sq Ft	221	271	224	235	224	293	328	199	259	269	241	209	232	245	252	226	242	237	277	188	229	194	247	264	219	216	225	242	242	234	238	263	234	234	235	239
3 Mo. Roll Avg			239	243	228	251	282	273	262	242	256	240	227	229	243	241	240	235	252	234	231	204	223	235	243	233	220	228	236	239	238	245	245	244	234	236

	M 10	A	M	J	J	A	S	O	N	D	J 11	F	M	A	M	J	J	A	S	O	N	D	J 12	F	M	A	M	J	J	A	S	O	N	D	J 13	F
Sale to List Price	0.925	0.944	0.945	0.936	0.950	0.935	0.923	0.920	0.934	0.925	0.916	0.946	0.905	0.927	0.932	0.944	0.949	0.928	0.940	0.945	0.924	0.907	0.913	0.920	0.957	0.925	0.940	0.954	0.937	0.946	0.952	0.959	0.938	0.956	0.966	0.950
3 Mo. Roll Avg			0.938	0.942	0.944	0.940	0.936	0.926	0.926	0.926	0.925	0.929	0.922	0.926	0.921	0.934	0.942	0.940	0.939	0.938	0.936	0.925	0.915	0.913	0.930	0.934	0.941	0.940	0.944	0.946	0.945	0.952	0.950	0.951	0.953	0.957

	M 10	A	M	J	J	A	S	O	N	D	J 11	F	M	A	M	J	J	A	S	O	N	D	J 12	F	M	A	M	J	J	A	S	O	N	D	J 13	F
New Listings	92	88	65	80	75	48	46	59	17	21	37	61	77	71	79	57	55	42	46	34	26	15	44	62	67	75	42	76	54	55	43	39	28	12	44	59
Inventory	285	289	268	274	271	263	254	251	207	187	182	215	231	244	254	248	237	224	228	207	189	172	179	181	192	188	161	166	162	156	164	153	133	112	117	108
Sales	29	19	31	62	37	41	19	20	22	24	28	9	21	24	28	51	39	50	21	22	22	21	18	15	21	34	54	58	53	59	25	32	23	23	18	12

	(000's) M 10	A	M	J	J	A	S	O	N	D	J 11	F	M	A	M	J	J	A	S	O	N	D	J 12	F	M	A	M	J	J	A	S	O	N	D	J 13	F
Avg Sale Price	851	863	600	744	752	792	691	607	522	569	601	621	623	581	620	704	736	612	655	408	515	513	834	423	555	514	663	640	689	686	759	600	493	530	488	550
3 Mo. Roll Avg			771	736	699	763	745	697	607	566	564	597	615	608	608	635	687	684	668	558	526	478	620	590	604	497	577	606	664	672	711	682	617	541	504	523

