

MLS Area: Lincolnshire



ART WILSON
Broker, Realtor
847-363-1599
www.NorthShoreHomesOnline.com
Art.Wilson@cbexchange.com



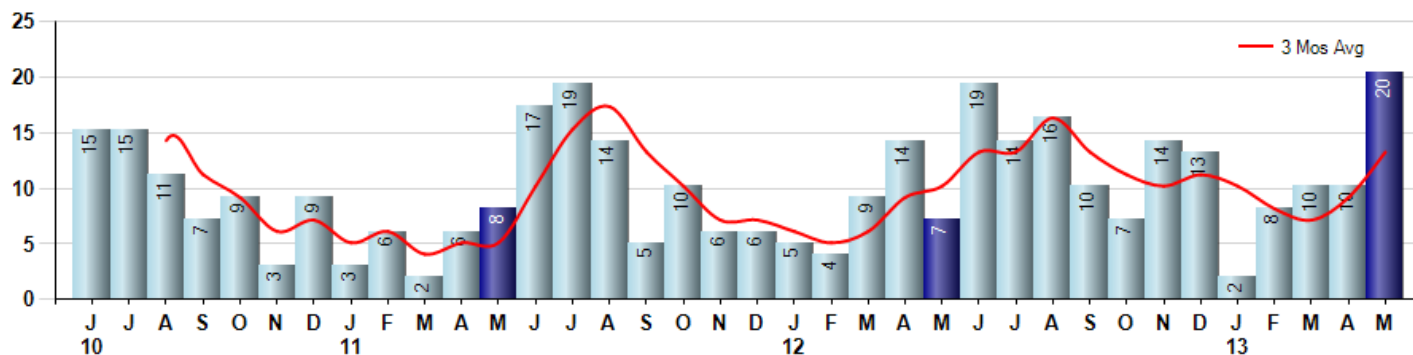
Price Range: \$0 to \$999,999,000 | Properties: Single Family Home, Townhome, Condo

Market Profile & Trends Overview	Month	Trending Versus*:				YTD	Trending Versus*:	
		LM	L3M	PYM	LY		PriorYTD	PriorYear
Median List Price of all Current Listings	\$549,950	↑		↑				
Average List Price of all Current Listings	\$690,913	↑		↑				
May Median Sales Price	\$374,500	↓	↓	↓	↓	\$400,000	↑	↓
May Average Sales Price	\$431,654	↓	↓	↓	↓	\$437,043	↓	↓
Total Properties Currently for Sale (Inventory)	40	↓		↓				
May Number of Properties Sold	20	↑		↑		50	↑	
May Average Days on Market (Solds)	140	↑	↑	↑	↑	110	↓	↓
May Month's Supply of Inventory	2.0	↓	↓	↓	↓	8.6	↓	↓
May Sale Price vs List Price Ratio	93.1%	↓	↓	↓	↓	93.9%	↑	↔

* LM=Last Month / L3M=Last 3 Months / PYM=Same Month Prior Year / LY=Last Year / YTD = Year-to-date

Property Sales

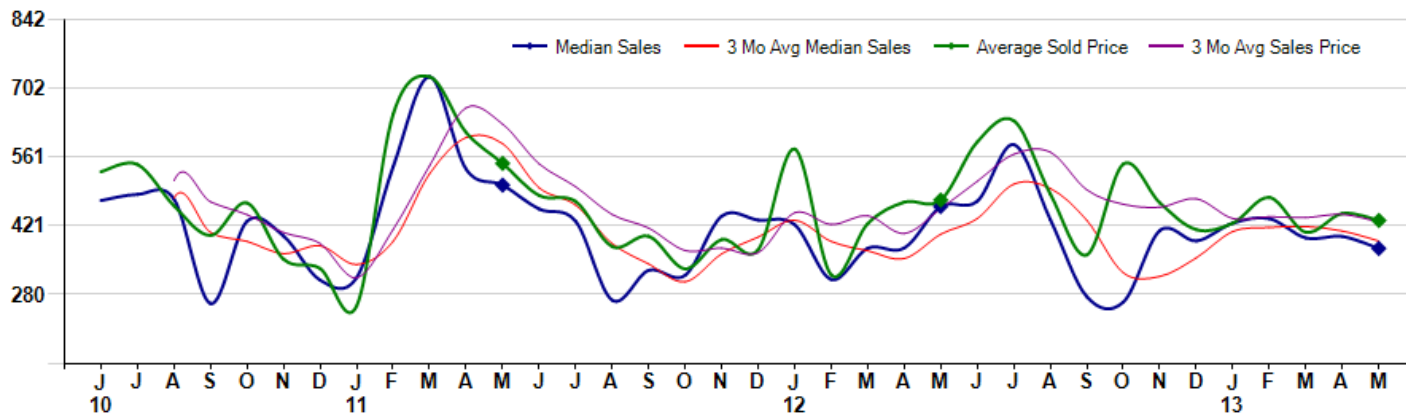
May Property sales were 20, up 185.7% from 7 in May of 2012 and 100.0% higher than the 10 sales last month. May 2013 sales were at their highest level compared to May of 2012 and 2011. May YTD sales of 50 are running 28.2% ahead of last year's year-to-date sales of 39.



Prices

The Median Sales Price in May was \$374,500, down -18.6% from \$460,000 in May of 2012 and down -6.1% from \$399,000 last month. The Average Sales Price in May was \$431,654, down -8.8% from \$473,214 in May of 2012 and down -3.2% from \$446,050 last month. May 2013 ASP was at the lowest level compared to May of 2012 and 2011.

Median means Middle (the same # of properties sold above and below Median) (000's)



© 2013 Coldwell Banker Real Estate LLC. All Rights Reserved. Coldwell Banker Residential Brokerage fully supports the principles of the Fair Housing Act and the Equal Opportunity Act. Coldwell Banker Residential Brokerage is operated by a subsidiary of NRT LLC. Coldwell Banker and the Coldwell Banker Logo are registered service marks owned by Coldwell Banker Real Estate LLC.

Based on information from Midwest Real Estate Data LLC for the period 6/1/2010 through 5/31/2013. Due to MLS reporting methods and allowable reporting policy, this data is only informational and may not be completely accurate. Therefore, Coldwell Banker Residential Brokerage does not guarantee the data accuracy. Data maintained by the MLS's may not reflect all real estate activity in the market.



MLS Area: Lincolnshire



ART WILSON

Broker, Realtor

847-363-1599

www.NorthShoreHomesOnline.com

Art.Wilson@cbexchange.com



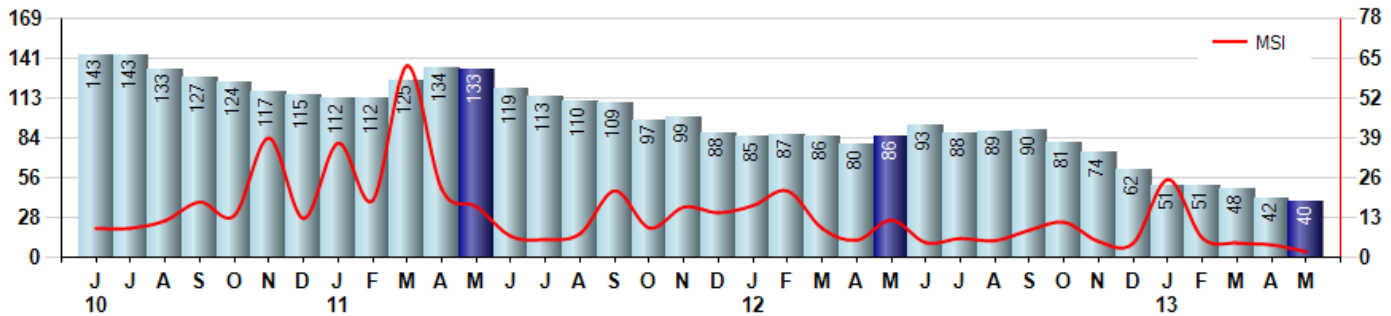
Price Range: \$0 to \$999,999,000 | Properties: Single Family Home, Townhome, Condo

Inventory & MSI

The Total Inventory of Properties available for sale as of May was 40, down -4.8% from 42 last month and down -53.5% from 86 in May of last year. May 2013 Inventory was at the lowest level compared to May of 2012 and 2011.

A comparatively lower MSI is more beneficial for sellers while a higher MSI is better for buyers. The May 2013 MSI of 2.0 months was at its lowest level compared with May of 2012 and 2011.

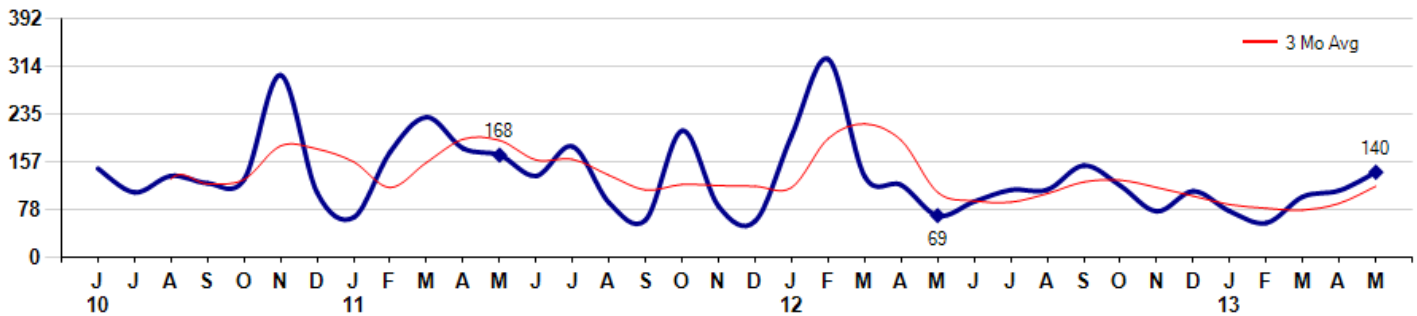
MSI is the # of months needed to sell all of the Inventory at the monthly Sales Pace



Market Time

The average Days On Market(DOM) shows how many days the average Property is on the Market before it sells. An upward trend in DOM tends to indicate a move towards more of a Buyer's market, a downward trend a move towards more of a Seller's market. The DOM for May was 140, up 27.3% from 110 days last month and up 102.9% from 69 days in May of last year. The May 2013 DOM was at a mid range compared with May of 2012 and 2011.

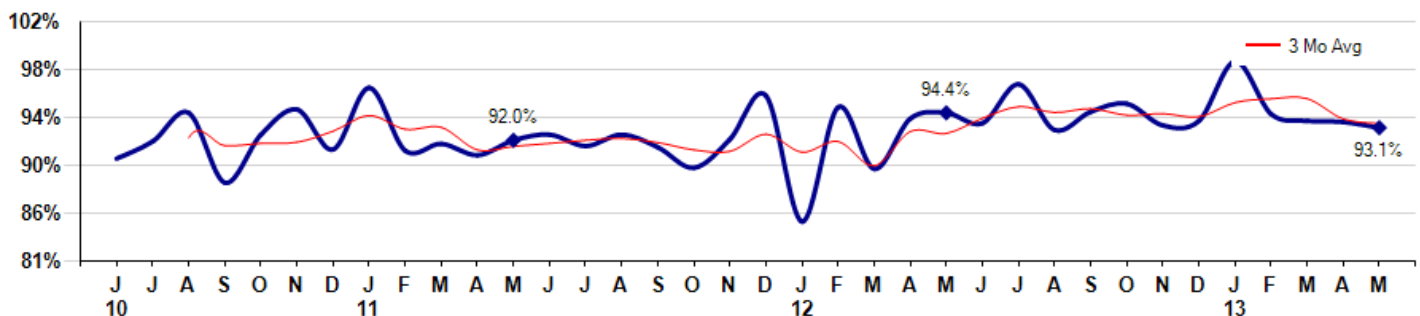
Average Days on Market(Listing to Contract) for properties sold during the month



Selling Price vs Listing Price

The Selling Price vs Listing Price reveals the average amount that Sellers are agreeing to come down from their list price. The lower the ratio is below 100% the more of a Buyer's market exists, a ratio at or above 100% indicates more of a Seller's market. The May 2013 Selling Price vs List Price of 93.1% was down from 93.6% last month and down from 94.4% in May of last year.

Avg Selling Price divided by Avg Listing Price for sold properties during the month



© 2013 Coldwell Banker Real Estate LLC. All Rights Reserved. Coldwell Banker Residential Brokerage fully supports the principles of the Fair Housing Act and the Equal Opportunity Act. Coldwell Banker Residential Brokerage is operated by a subsidiary of NRT LLC. Coldwell Banker and the Coldwell Banker Logo are registered service marks owned by Coldwell Banker Real Estate LLC.

Based on information from Midwest Real Estate Data LLC for the period 6/1/2010 through 5/31/2013. Due to MLS reporting methods and allowable reporting policy, this data is only informational and may not be completely accurate. Therefore, Coldwell Banker Residential Brokerage does not guarantee the data accuracy. Data maintained by the MLS's may not reflect all real estate activity in the market.



MLS Area: Lincolnshire



ART WILSON

Broker, Realtor

847-363-1599

www.NorthShoreHomesOnline.com

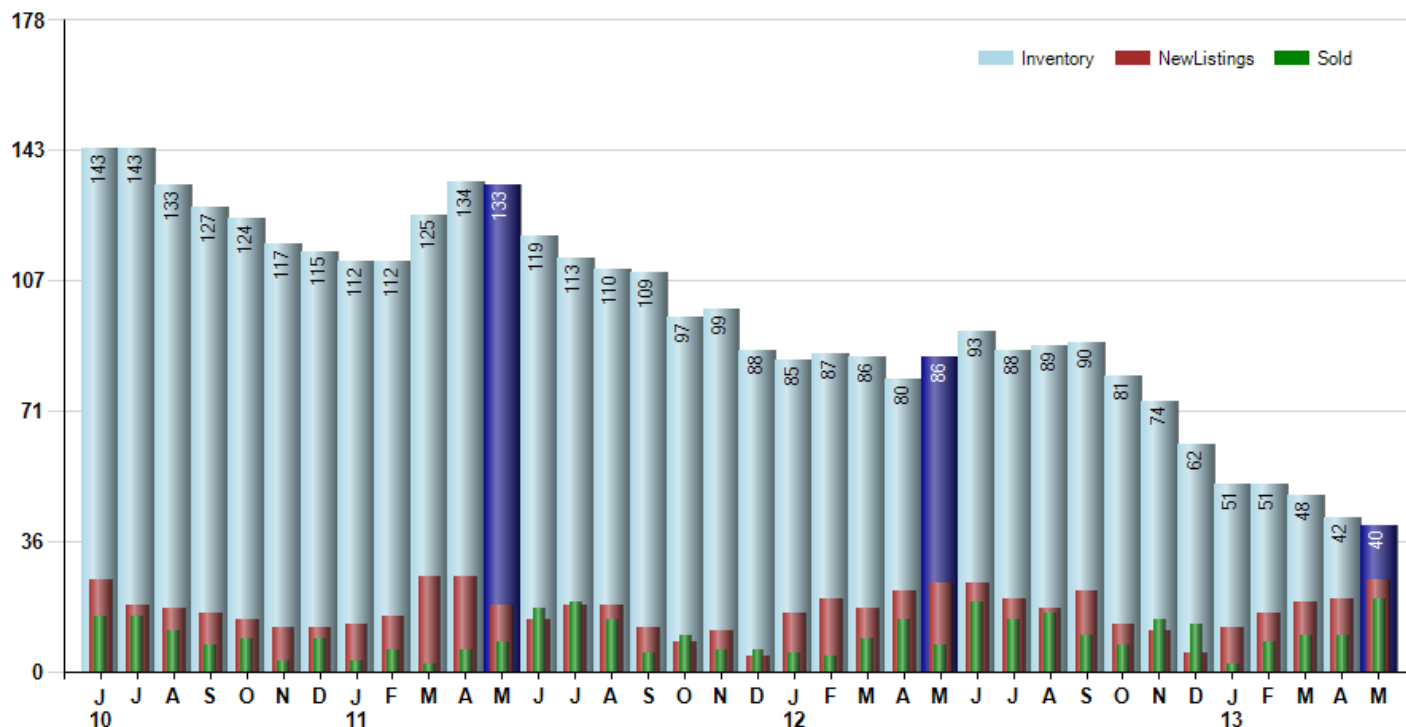
Art.Wilson@cbexchange.com



Price Range: \$0 to \$999,999,000 | Properties: Single Family Home, Townhome, Condo

Inventory / New Listings / Sales

This last view of the market combines monthly inventory of Properties for sale along with New Listings and Sales. The graph shows the basic annual seasonality of the market as well as the relationship between these items. The number of New Listings in May 2013 was 25, up 25.0% from 20 last month and up 4.2% from 24 in May of last year.



© 2013 Coldwell Banker Real Estate LLC. All Rights Reserved. Coldwell Banker Residential Brokerage fully supports the principles of the Fair Housing Act and the Equal Opportunity Act. Coldwell Banker Residential Brokerage is operated by a subsidiary of NRT LLC. Coldwell Banker and the Coldwell Banker Logo are registered service marks owned by Coldwell Banker Real Estate LLC.

Based on information from Midwest Real Estate Data LLC for the period 6/1/2010 through 5/31/2013. Due to MLS reporting methods and allowable reporting policy, this data is only informational and may not be completely accurate. Therefore, Coldwell Banker Residential Brokerage does not guarantee the data accuracy. Data maintained by the MLS's may not reflect all real estate activity in the market.



MLS Area: Lincolnshire



ART WILSON
 Broker, Realtor
 847-363-1599
 www.NorthShoreHomesOnline.com
 Art.Wilson@cbexchange.com



Price Range: \$0 to \$999,999,000 | Properties: Single Family Home, Townhome, Condo

	J 10	J	A	S	O	N	D	J 11	F	M	A	M	J	J	A	S	O	N	D	J 12	F	M	A	M	J	J	A	S	O	N	D	J 13	F	M	A	M
Homes Sold	15	15	11	7	9	3	9	3	6	2	6	8	17	19	14	5	10	6	6	5	4	9	14	7	19	14	16	10	7	14	13	2	8	10	10	20
3 Mo. Roll Avg			14	11	9	6	7	5	6	4	5	5	10	15	17	13	10	7	7	6	5	6	9	10	13	13	16	13	11	10	11	10	8	7	9	13

(000's)	J 10	J	A	S	O	N	D	J 11	F	M	A	M	J	J	A	S	O	N	D	J 12	F	M	A	M	J	J	A	S	O	N	D	J 13	F	M	A	M
Median Sale Price	473	485	475	262	430	400	310	315	541	725	537	504	455	430	269	330	320	441	433	423	311	375	375	460	471	587	434	276	265	411	390	426	436	396	399	375
3 Mo. Roll Avg			478	407	389	364	380	342	389	527	601	588	498	463	385	343	306	364	398	432	389	370	354	403	435	506	497	432	325	317	355	409	417	419	410	390

	J 10	J	A	S	O	N	D	J 11	F	M	A	M	J	J	A	S	O	N	D	J 12	F	M	A	M	J	J	A	S	O	N	D	J 13	F	M	A	M
Inventory	143	143	133	127	124	117	115	112	112	125	134	133	119	113	110	109	97	99	88	85	87	86	80	86	93	88	89	90	81	74	62	51	51	48	42	40
MSI	10	10	12	18	14	39	13	37	19	63	22	17	7	6	8	22	10	17	15	17	22	10	6	12	5	6	6	9	12	5	5	26	6	5	4	2

	J 10	J	A	S	O	N	D	J 11	F	M	A	M	J	J	A	S	O	N	D	J 12	F	M	A	M	J	J	A	S	O	N	D	J 13	F	M	A	M
Days On Market	146	107	134	122	128	299	107	66	173	230	179	168	134	182	90	62	208	84	60	200	325	133	119	69	92	111	111	151	118	76	109	76	57	100	110	140
3 Mo. Roll Avg			129	121	128	183	178	157	115	156	194	192	160	161	135	111	120	118	117	115	195	219	192	107	93	91	105	124	127	115	101	87	81	78	89	117

	J 10	J	A	S	O	N	D	J 11	F	M	A	M	J	J	A	S	O	N	D	J 12	F	M	A	M	J	J	A	S	O	N	D	J 13	F	M	A	M
Price per Sq Ft	184	170	171	159	161	160	146	123	170	188	195	174	168	159	131	149	121	141	135	137	142	125	153	182	177	192	171	152	154	160	158	171	153	141	159	158
3 Mo. Roll Avg			175	167	164	160	156	143	146	160	184	186	179	167	153	146	134	137	132	138	138	135	140	153	171	184	180	172	159	155	157	163	161	155	151	153

	J 10	J	A	S	O	N	D	J 11	F	M	A	M	J	J	A	S	O	N	D	J 12	F	M	A	M	J	J	A	S	O	N	D	J 13	F	M	A	M
Sale to List Price	0.904	0.919	0.944	0.883	0.925	0.947	0.912	0.966	0.911	0.917	0.907	0.920	0.925	0.915	0.925	0.914	0.896	0.921	0.959	0.849	0.949	0.895	0.939	0.944	0.935	0.969	0.929	0.945	0.952	0.933	0.937	0.989	0.943	0.937	0.936	0.931
3 Mo. Roll Avg			0.922	0.915	0.917	0.918	0.928	0.942	0.930	0.931	0.912	0.915	0.917	0.920	0.922	0.918	0.912	0.910	0.925	0.910	0.919	0.898	0.928	0.926	0.939	0.949	0.944	0.948	0.942	0.943	0.941	0.953	0.956	0.956	0.939	0.935

	J 10	J	A	S	O	N	D	J 11	F	M	A	M	J	J	A	S	O	N	D	J 12	F	M	A	M	J	J	A	S	O	N	D	J 13	F	M	A	M
New Listings	25	18	17	16	14	12	12	13	15	26	26	18	14	18	18	12	8	11	4	16	20	17	22	24	24	20	17	22	13	11	5	12	16	19	20	25
Inventory	143	143	133	127	124	117	115	112	112	125	134	133	119	113	110	109	97	99	88	85	87	86	80	86	93	88	89	90	81	74	62	51	51	48	42	40
Sales	15	15	11	7	9	3	9	3	6	2	6	8	17	19	14	5	10	6	6	5	4	9	14	7	19	14	16	10	7	14	13	2	8	10	10	20

(000's)	J 10	J	A	S	O	N	D	J 11	F	M	A	M	J	J	A	S	O	N	D	J 12	F	M	A	M	J	J	A	S	O	N	D	J 13	F	M	A	M
Avg Sale Price	531	546	462	401	467	353	334	257	648	725	611	548	483	471	378	400	333	393	372	578	321	425	469	473	592	635	486	361	547	468	413	426	479	408	446	432
3 Mo. Roll Avg			513	470	443	407	385	315	413	543	662	628	547	501	444	416	370	375	366	447	423	441	405	456	512	567	571	494	465	459	476	436	439	438	444	428

© 2013 Coldwell Banker Real Estate LLC. All Rights Reserved. Coldwell Banker Residential Brokerage fully supports the principles of the Fair Housing Act and the Equal Opportunity Act. Coldwell Banker Residential Brokerage is operated by a subsidiary of NRT LLC. Coldwell Banker and the Coldwell Banker Logo are registered service marks owned by Coldwell Banker Real Estate LLC.

Based on information from Midwest Real Estate Data LLC for the period 6/1/2010 through 5/31/2013. Due to MLS reporting methods and allowable reporting policy, this data is only informational and may not be completely accurate. Therefore, Coldwell Banker Residential Brokerage does not guarantee the data accuracy. Data maintained by the MLS's may not reflect all real estate activity in the market.

