

MLS Area: Deerfield



ART WILSON
 Broker, Realtor
 847-363-1599
 www.NorthShoreHomesOnline.com
 Art.Wilson@cbexchange.com



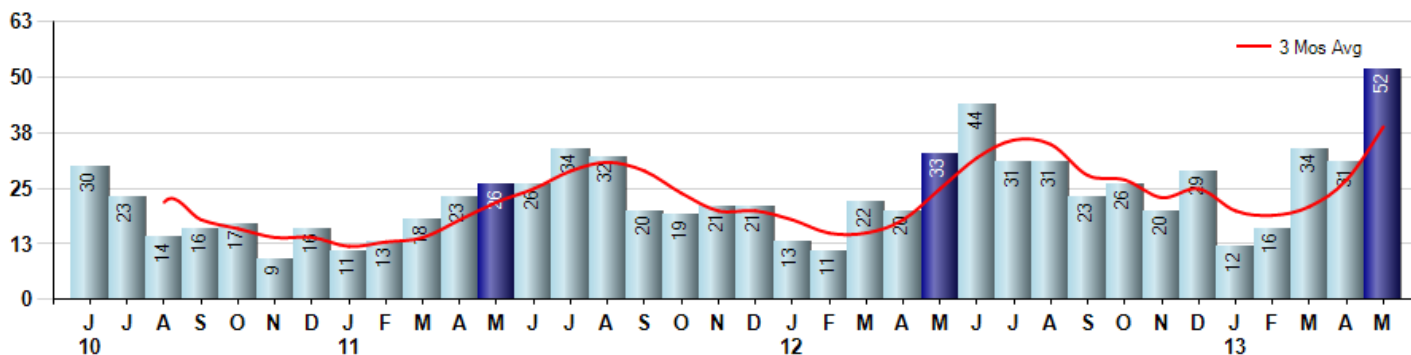
Price Range: \$0 to \$999,999,000 | Properties: Single Family Home, Townhome, Condo

Market Profile & Trends Overview	Month	Trending Versus*:				YTD	Trending Versus*:	
		LM	L3M	PYM	LY		PriorYTD	PriorYear
Median List Price of all Current Listings	\$642,450	↑		↑				
Average List Price of all Current Listings	\$705,747	↑		↑				
May Median Sales Price	\$375,000	↑	↑	↑	↑	\$336,900	↑	↑
May Average Sales Price	\$441,067	↑	↑	↑	↑	\$391,867	↑	↑
Total Properties Currently for Sale (Inventory)	94	↓		↓				
May Number of Properties Sold	52	↑		↑		145	↑	
May Average Days on Market (Solds)	64	↓	↓	↓	↓	74	↓	↓
May Month's Supply of Inventory	1.8	↓	↓	↓	↓	4.8	↓	↓
May Sale Price vs List Price Ratio	95.4%	↓	↑	↑	↑	95.0%	↑	↑

* LM=Last Month / L3M=Last 3 Months / PYM=Same Month Prior Year / LY=Last Year / YTD = Year-to-date

Property Sales

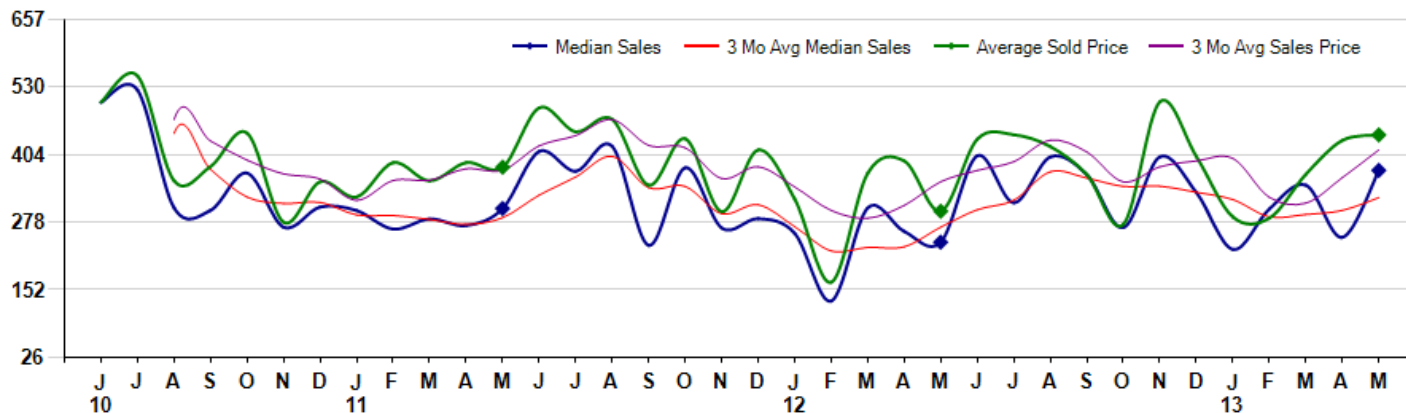
May Property sales were 52, up 57.6% from 33 in May of 2012 and 67.7% higher than the 31 sales last month. May 2013 sales were at their highest level compared to May of 2012 and 2011. May YTD sales of 145 are running 46.5% ahead of last year's year-to-date sales of 99.



Prices

The Median Sales Price in May was \$375,000, up 55.6% from \$241,000 in May of 2012 and up 50.0% from \$250,000 last month. The Average Sales Price in May was \$441,067, up 47.6% from \$298,734 in May of 2012 and up 2.4% from \$430,846 last month. May 2013 ASP was at highest level compared to May of 2012 and 2011.

Median means Middle (the same # of properties sold above and below Median) (000's)



© 2013 Coldwell Banker Real Estate LLC. All Rights Reserved. Coldwell Banker Residential Brokerage fully supports the principles of the Fair Housing Act and the Equal Opportunity Act. Coldwell Banker Residential Brokerage is operated by a subsidiary of NRT LLC. Coldwell Banker and the Coldwell Banker Logo are registered service marks owned by Coldwell Banker Real Estate LLC.

Based on information from Midwest Real Estate Data LLC for the period 6/1/2010 through 5/31/2013. Due to MLS reporting methods and allowable reporting policy, this data is only informational and may not be completely accurate. Therefore, Coldwell Banker Residential Brokerage does not guarantee the data accuracy. Data maintained by the MLS's may not reflect all real estate activity in the market.



MLS Area: Deerfield



ART WILSON
 Broker, Realtor
 847-363-1599
 www.NorthShoreHomesOnline.com
 Art.Wilson@cbexchange.com



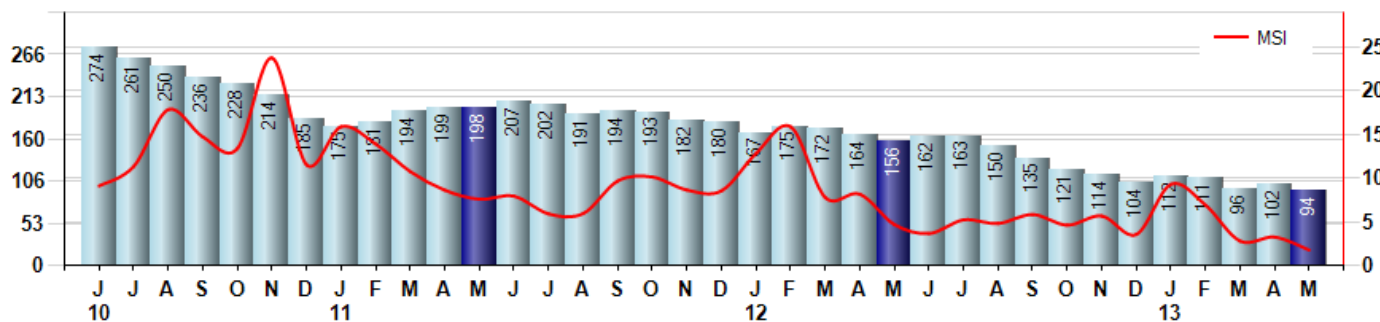
Price Range: \$0 to \$999,999,000 | Properties: Single Family Home, Townhome, Condo

Inventory & MSI

The Total Inventory of Properties available for sale as of May was 94, down -7.8% from 102 last month and down -39.7% from 156 in May of last year. May 2013 Inventory was at the lowest level compared to May of 2012 and 2011.

A comparatively lower MSI is more beneficial for sellers while a higher MSI is better for buyers. The May 2013 MSI of 1.8 months was at its lowest level compared with May of 2012 and 2011.

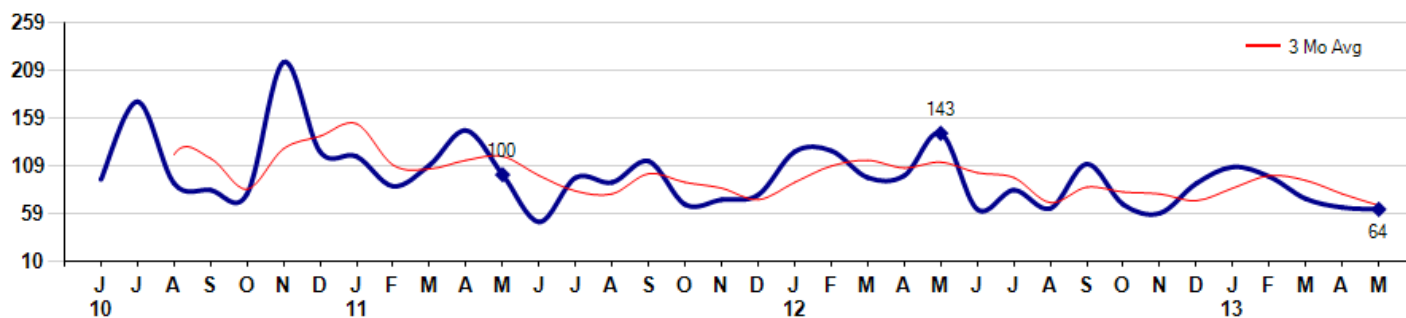
MSI is the # of months needed to sell all of the Inventory at the monthly Sales Pace



Market Time

The average Days On Market(DOM) shows how many days the average Property is on the Market before it sells. An upward trend in DOM tends to indicate a move towards more of a Buyer's market, a downward trend a move towards more of a Seller's market. The DOM for May was 64, down -3.0% from 66 days last month and down -55.2% from 143 days in May of last year. The May 2013 DOM was at its lowest level compared with May of 2012 and 2011.

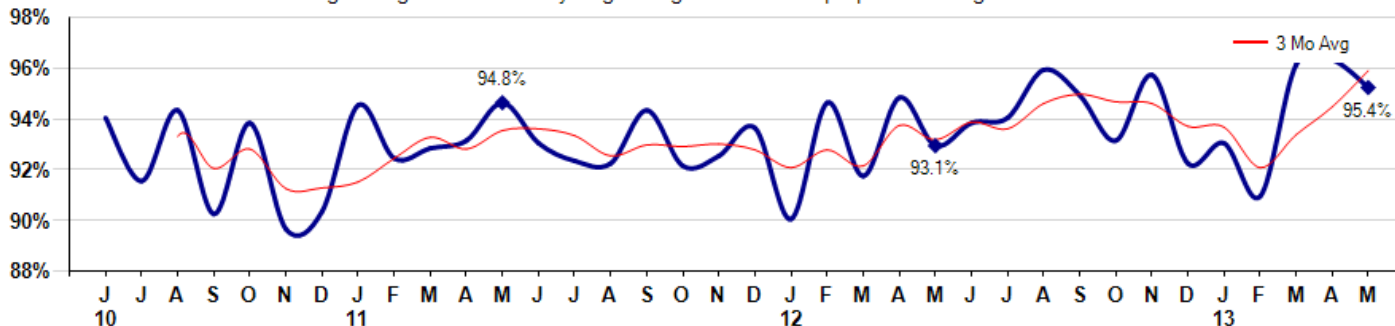
Average Days on Market(Listing to Contract) for properties sold during the month



Selling Price vs Listing Price

The Selling Price vs Listing Price reveals the average amount that Sellers are agreeing to come down from their list price. The lower the ratio is below 100% the more of a Buyer's market exists, a ratio at or above 100% indicates more of a Seller's market. The May 2013 Selling Price vs List Price of 95.4% was down from 96.5% last month and up from 93.1% in May of last year.

Avg Selling Price divided by Avg Listing Price for sold properties during the month



© 2013 Coldwell Banker Real Estate LLC. All Rights Reserved. Coldwell Banker Residential Brokerage fully supports the principles of the Fair Housing Act and the Equal Opportunity Act. Coldwell Banker Residential Brokerage is operated by a subsidiary of NRT LLC. Coldwell Banker and the Coldwell Banker Logo are registered service marks owned by Coldwell Banker Real Estate LLC.

Based on information from Midwest Real Estate Data LLC for the period 6/1/2010 through 5/31/2013. Due to MLS reporting methods and allowable reporting policy, this data is only informational and may not be completely accurate. Therefore, Coldwell Banker Residential Brokerage does not guarantee the data accuracy. Data maintained by the MLS's may not reflect all real estate activity in the market.



MLS Area: Deerfield



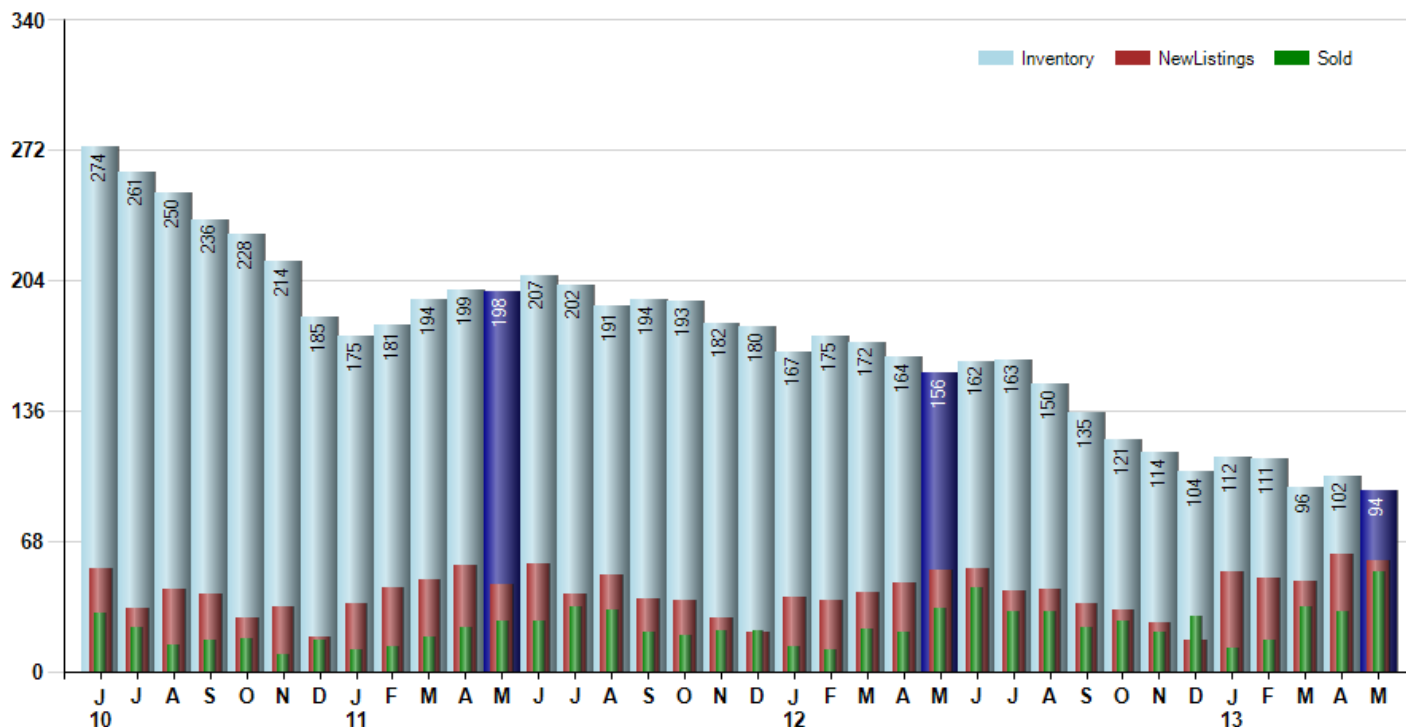
ART WILSON
 Broker, Realtor
 847-363-1599
www.NorthShoreHomesOnline.com
Art.Wilson@cbexchange.com



Price Range: \$0 to \$999,999,000 | Properties: Single Family Home, Townhome, Condo

Inventory / New Listings / Sales

This last view of the market combines monthly inventory of Properties for sale along with New Listings and Sales. The graph shows the basic annual seasonality of the market as well as the relationship between these items. The number of New Listings in May 2013 was 58, down -4.9% from 61 last month and up 9.4% from 53 in May of last year.



© 2013 Coldwell Banker Real Estate LLC. All Rights Reserved. Coldwell Banker Residential Brokerage fully supports the principles of the Fair Housing Act and the Equal Opportunity Act. Coldwell Banker Residential Brokerage is operated by a subsidiary of NRT LLC. Coldwell Banker and the Coldwell Banker Logo are registered service marks owned by Coldwell Banker Real Estate LLC.

Based on information from Midwest Real Estate Data LLC for the period 6/1/2010 through 5/31/2013. Due to MLS reporting methods and allowable reporting policy, this data is only informational and may not be completely accurate. Therefore, Coldwell Banker Residential Brokerage does not guarantee the data accuracy. Data maintained by the MLS's may not reflect all real estate activity in the market.



MLS Area: Deerfield



ART WILSON
 Broker, Realtor
 847-363-1599
 www.NorthShoreHomesOnline.com
 Art.Wilson@cbexchange.com



Price Range: \$0 to \$999,999,000 | Properties: Single Family Home, Townhome, Condo

	J 10	J	A	S	O	N	D	J 11	F	M	A	M	J	J	A	S	O	N	D	J 12	F	M	A	M	J	J	A	S	O	N	D	J 13	F	M	A	M
Homes Sold	30	23	14	16	17	9	16	11	13	18	23	26	26	34	32	20	19	21	21	13	11	22	20	33	44	31	31	23	26	20	29	12	16	34	31	52
3 Mo. Roll Avg			22	18	16	14	14	12	13	14	18	22	25	29	31	29	24	20	20	18	15	15	18	25	32	36	35	28	27	23	25	20	19	21	27	39

(000's)	J 10	J	A	S	O	N	D	J 11	F	M	A	M	J	J	A	S	O	N	D	J 12	F	M	A	M	J	J	A	S	O	N	D	J 13	F	M	A	M
Median Sale Price	502	525	305	301	370	269	307	300	266	284	272	304	410	374	420	235	380	268	285	258	131	305	261	241	402	315	400	367	268	400	334	228	303	348	250	375
3 Mo. Roll Avg			444	377	325	313	315	292	291	283	274	287	329	363	401	343	345	294	311	270	225	231	232	269	301	319	372	361	345	345	334	321	288	293	300	324

	J 10	J	A	S	O	N	D	J 11	F	M	A	M	J	J	A	S	O	N	D	J 12	F	M	A	M	J	J	A	S	O	N	D	J 13	F	M	A	M
Inventory	274	261	250	236	228	214	185	175	181	194	199	198	207	202	191	194	193	182	180	167	175	172	164	156	162	163	150	135	121	114	104	112	111	96	102	94
MSI	9	11	18	15	13	24	12	16	14	11	9	8	8	6	6	10	10	9	9	13	16	8	8	5	4	5	5	6	5	6	4	9	7	3	3	2

	J 10	J	A	S	O	N	D	J 11	F	M	A	M	J	J	A	S	O	N	D	J 12	F	M	A	M	J	J	A	S	O	N	D	J 13	F	M	A	M
Days On Market	95	176	91	84	80	217	124	119	88	110	146	100	51	97	92	114	69	74	79	124	125	97	99	143	64	84	65	111	69	60	91	108	98	75	66	64
3 Mo. Roll Avg			121	117	85	127	140	153	110	106	115	119	99	83	80	101	92	86	74	92	109	115	107	113	102	97	71	87	82	80	73	86	99	94	80	68

	J 10	J	A	S	O	N	D	J 11	F	M	A	M	J	J	A	S	O	N	D	J 12	F	M	A	M	J	J	A	S	O	N	D	J 13	F	M	A	M
Price per Sq Ft	202	204	149	187	178	149	156	145	155	166	151	170	198	171	175	143	196	136	162	142	100	155	158	148	168	171	165	150	157	182	157	144	159	173	165	175
3 Mo. Roll Avg			185	180	171	171	161	150	152	155	157	162	173	180	181	163	171	158	165	147	135	132	138	154	158	162	168	162	157	163	165	161	153	159	166	171

	J 10	J	A	S	O	N	D	J 11	F	M	A	M	J	J	A	S	O	N	D	J 12	F	M	A	M	J	J	A	S	O	N	D	J 13	F	M	A	M
Sale to List Price	0.942	0.917	0.945	0.904	0.940	0.898	0.905	0.947	0.926	0.930	0.933	0.948	0.932	0.925	0.924	0.945	0.923	0.927	0.938	0.902	0.948	0.919	0.950	0.931	0.940	0.942	0.961	0.951	0.933	0.959	0.924	0.932	0.911	0.963	0.965	0.954
3 Mo. Roll Avg			0.935	0.922	0.930	0.914	0.914	0.917	0.926	0.934	0.930	0.937	0.938	0.935	0.927	0.931	0.931	0.932	0.929	0.922	0.929	0.923	0.939	0.933	0.940	0.938	0.948	0.951	0.948	0.948	0.939	0.938	0.922	0.935	0.946	0.961

	J 10	J	A	S	O	N	D	J 11	F	M	A	M	J	J	A	S	O	N	D	J 12	F	M	A	M	J	J	A	S	O	N	D	J 13	F	M	A	M
New Listings	54	33	43	40	28	34	18	35	44	48	55	45	56	40	50	38	37	28	20	39	37	41	46	53	54	42	43	35	32	25	16	52	49	47	61	58
Inventory	274	261	250	236	228	214	185	175	181	194	199	198	207	202	191	194	193	182	180	167	175	172	164	156	162	163	150	135	121	114	104	112	111	96	102	94
Sales	30	23	14	16	17	9	16	11	13	18	23	26	26	34	32	20	19	21	21	13	11	22	20	33	44	31	31	23	26	20	29	12	16	34	31	52

(000's)	J 10	J	A	S	O	N	D	J 11	F	M	A	M	J	J	A	S	O	N	D	J 12	F	M	A	M	J	J	A	S	O	N	D	J 13	F	M	A	M
Avg Sale Price	502	551	356	382	445	278	354	325	389	355	390	381	492	447	470	347	434	298	413	321	166	370	393	299	433	441	419	367	274	503	401	288	286	368	431	441
3 Mo. Roll Avg			470	430	394	368	359	319	356	357	378	375	421	440	470	422	417	360	382	344	300	286	309	354	375	391	431	409	354	381	393	397	325	314	361	413

© 2013 Coldwell Banker Real Estate LLC. All Rights Reserved. Coldwell Banker Residential Brokerage fully supports the principles of the Fair Housing Act and the Equal Opportunity Act. Coldwell Banker Residential Brokerage is operated by a subsidiary of NRT LLC. Coldwell Banker and the Coldwell Banker Logo are registered service marks owned by Coldwell Banker Real Estate LLC.

Based on information from Midwest Real Estate Data LLC for the period 6/1/2010 through 5/31/2013. Due to MLS reporting methods and allowable reporting policy, this data is only informational and may not be completely accurate. Therefore, Coldwell Banker Residential Brokerage does not guarantee the data accuracy. Data maintained by the MLS's may not reflect all real estate activity in the market.

