

MLS Area: Glenview Golf



ART WILSON

Broker, Realtor

847-363-1599

www.NorthShoreHomesOnline.com

Art.Wilson@cbexchange.com



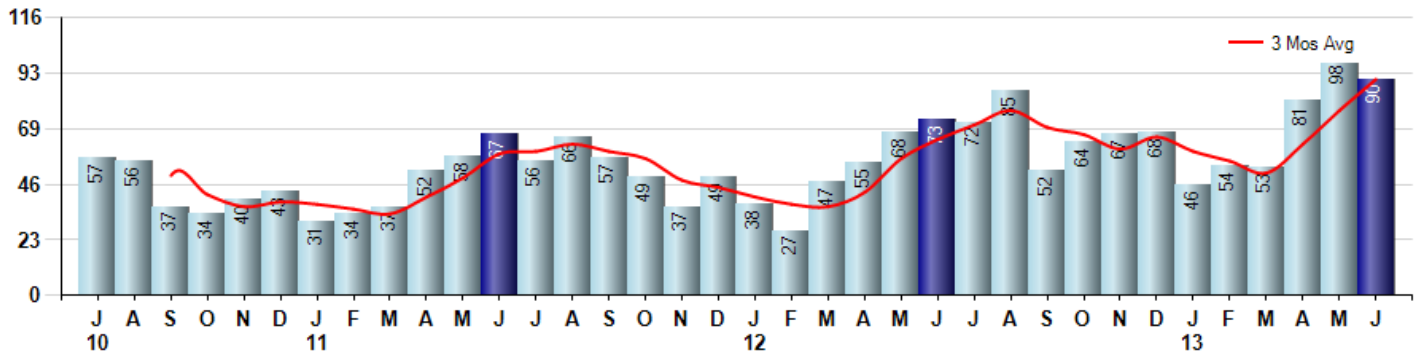
Price Range: \$0 to \$999,999,000 | Properties: Single Family Home, Townhome, Condo

Market Profile & Trends Overview	Month	Trending Versus*:				YTD	Trending Versus*:	
		LM	L3M	PYM	LY		PriorYTD	PriorYear
Median List Price of all Current Listings	\$499,000	↔		↑				
Average List Price of all Current Listings	\$628,292	↑		↑				
June Median Sales Price	\$481,500	↑	↑	↑	↑	\$370,000	↑	↑
June Average Sales Price	\$517,689	↑	↑	↑	↑	\$426,326	↑	↑
Total Properties Currently for Sale (Inventory)	206	↓		↓				
June Number of Properties Sold	90	↓		↑		422	↑	
June Average Days on Market (Solds)	75	↑	↓	↓	↓	83	↓	↓
June Month's Supply of Inventory	2.3	↓	↓	↓	↓	3.7	↓	↓
June Sale Price vs List Price Ratio	96.4%	↓	↑	↑	↑	95.9%	↑	↑

* LM=Last Month / L3M=Last 3 Months / PYM=Same Month Prior Year / LY=Last Year / YTD = Year-to-date

Property Sales

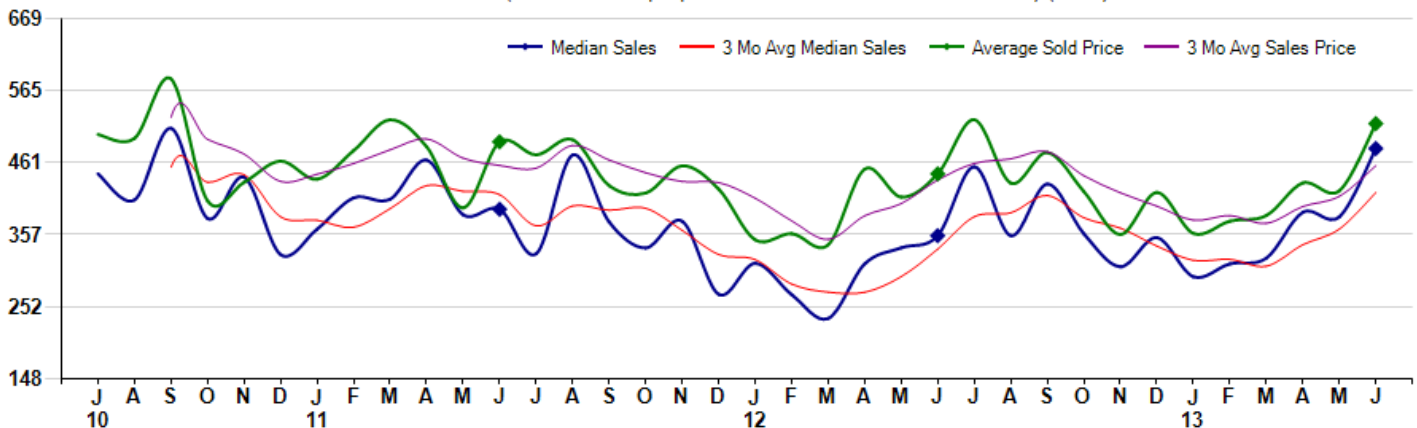
June Property sales were 90, up 23.3% from 73 in June of 2012 and -8.2% lower than the 98 sales last month. June 2013 sales were at their highest level compared to June of 2012 and 2011. June YTD sales of 422 are running 37.0% ahead of last year's year-to-date sales of 308.



Prices

The Median Sales Price in June was \$481,500, up 35.6% from \$355,000 in June of 2012 and up 25.9% from \$382,507 last month. The Average Sales Price in June was \$517,689, up 16.4% from \$444,754 in June of 2012 and up 23.2% from \$420,270 last month. June 2013 ASP was at highest level compared to June of 2012 and 2011.

Median means Middle (the same # of properties sold above and below Median) (000's)



MLS Area: Glenview Golf



ART WILSON
 Broker, Realtor
 847-363-1599
 www.NorthShoreHomesOnline.com
 Art.Wilson@cbexchange.com



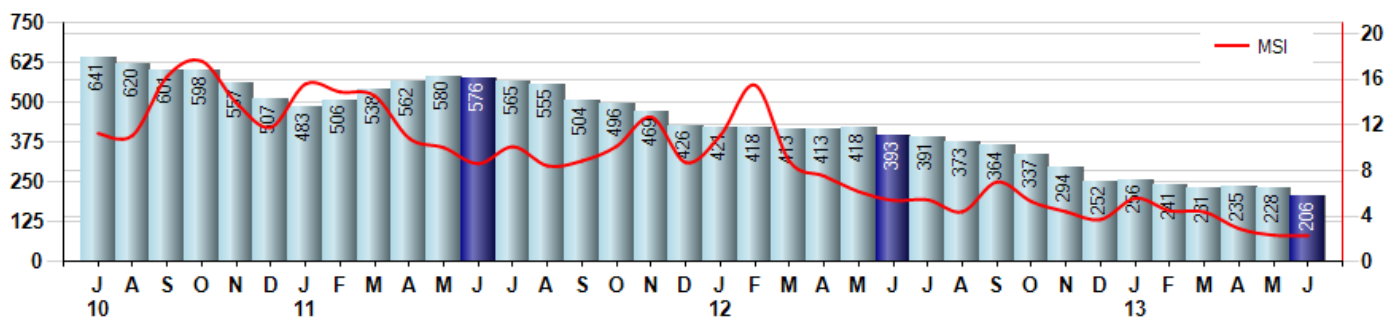
Price Range: \$0 to \$999,999,000 | Properties: Single Family Home, Townhome, Condo

Inventory & MSI

The Total Inventory of Properties available for sale as of June was 206, down -9.6% from 228 last month and down -47.6% from 393 in June of last year. June 2013 Inventory was at the lowest level compared to June of 2012 and 2011.

A comparatively lower MSI is more beneficial for sellers while a higher MSI is better for buyers. The June 2013 MSI of 2.3 months was at its lowest level compared with June of 2012 and 2011.

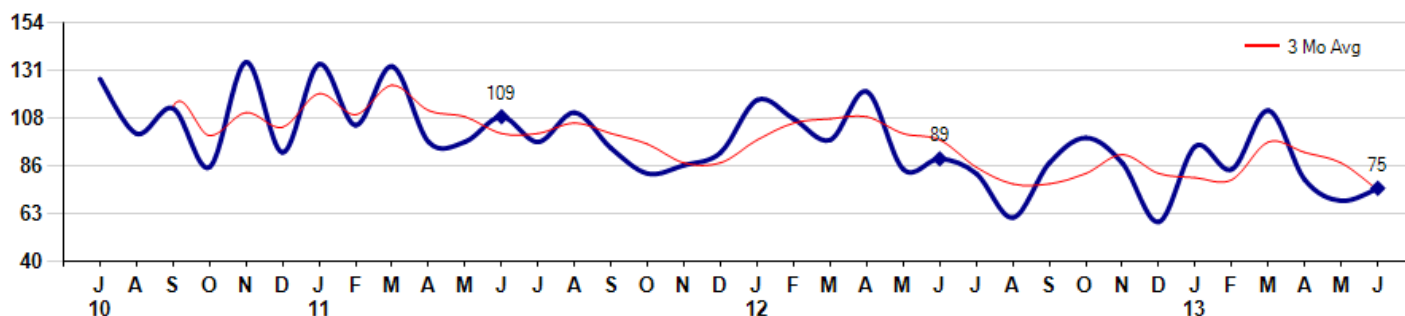
MSI is the # of months needed to sell all of the Inventory at the monthly Sales Pace



Market Time

The average Days On Market(DOM) shows how many days the average Property is on the Market before it sells. An upward trend in DOM tends to indicate a move towards more of a Buyer's market, a downward trend a move towards more of a Seller's market. The DOM for June was 75, up 8.7% from 69 days last month and down -15.7% from 89 days in June of last year. The June 2013 DOM was at its lowest level compared with June of 2012 and 2011.

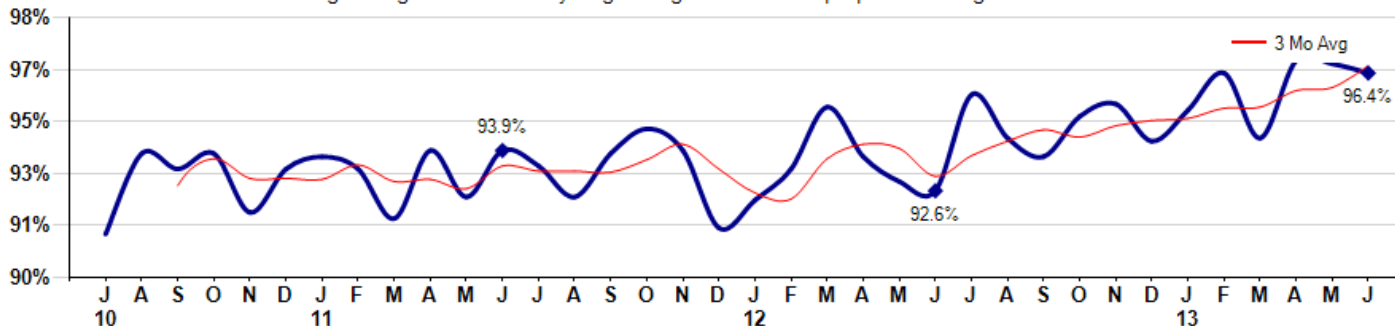
Average Days on Market(Listing to Contract) for properties sold during the month



Selling Price vs Listing Price

The Selling Price vs Listing Price reveals the average amount that Sellers are agreeing to come down from their list price. The lower the ratio is below 100% the more of a Buyer's market exists, a ratio at or above 100% indicates more of a Seller's market. The June 2013 Selling Price vs List Price of 96.4% was down from 96.7% last month and up from 92.6% in June of last year.

Avg Selling Price divided by Avg Listing Price for sold properties during the month



© 2013 Coldwell Banker Real Estate LLC. All Rights Reserved. Coldwell Banker Residential Brokerage fully supports the principles of the Fair Housing Act and the Equal Opportunity Act. Coldwell Banker Residential Brokerage is operated by a subsidiary of NRT LLC. Coldwell Banker and the Coldwell Banker Logo are registered service marks owned by Coldwell Banker Real Estate LLC.

Based on information from Midwest Real Estate Data LLC for the period 7/1/2010 through 6/30/2013. Due to MLS reporting methods and allowable reporting policy, this data is only informational and may not be completely accurate. Therefore, Coldwell Banker Residential Brokerage does not guarantee the data accuracy. Data maintained by the MLS's may not reflect all real estate activity in the market.



MLS Area: Glenview Golf



ART WILSON

Broker, Realtor

847-363-1599

www.NorthShoreHomesOnline.com

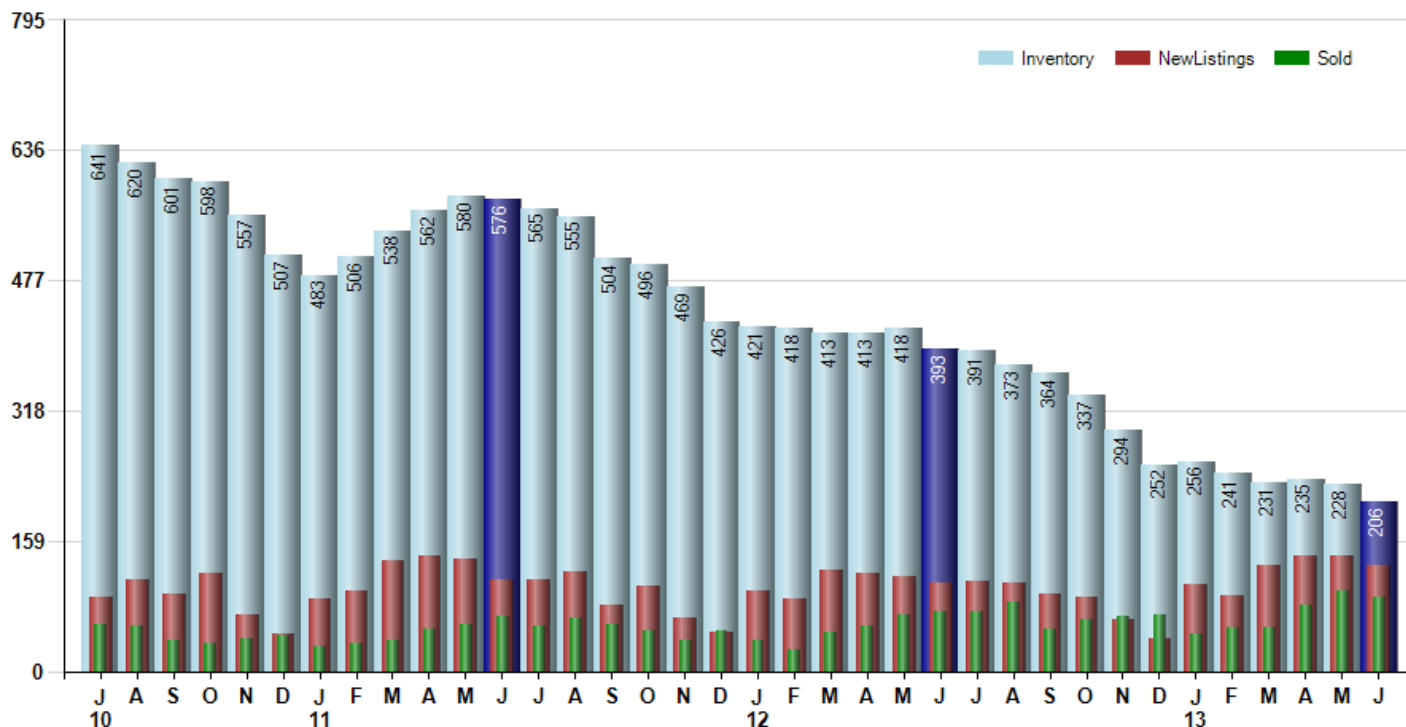
Art.Wilson@cbexchange.com



Price Range: \$0 to \$999,999,000 | Properties: Single Family Home, Townhome, Condo

Inventory / New Listings / Sales

This last view of the market combines monthly inventory of Properties for sale along with New Listings and Sales. The graph shows the basic annual seasonality of the market as well as the relationship between these items. The number of New Listings in June 2013 was 129, down -8.5% from 141 last month and up 20.6% from 107 in June of last year.



© 2013 Coldwell Banker Real Estate LLC. All Rights Reserved. Coldwell Banker Residential Brokerage fully supports the principles of the Fair Housing Act and the Equal Opportunity Act. Coldwell Banker Residential Brokerage is operated by a subsidiary of NRT LLC. Coldwell Banker and the Coldwell Banker Logo are registered service marks owned by Coldwell Banker Real Estate LLC.

Based on information from Midwest Real Estate Data LLC for the period 7/1/2010 through 6/30/2013. Due to MLS reporting methods and allowable reporting policy, this data is only informational and may not be completely accurate. Therefore, Coldwell Banker Residential Brokerage does not guarantee the data accuracy. Data maintained by the MLS's may not reflect all real estate activity in the market.



MARKET ACTION REPORT

June 2013

MLS Area: Glenview Golf



ART WILSON
 Broker, Realtor
 847-363-1599
 www.NorthShoreHomesOnline.com
 Art.Wilson@cbexchange.com



Price Range: \$0 to \$999,999,000 | Properties: Single Family Home, Townhome, Condo

	J 10	A	S	O	N	D	J 11	F	M	A	M	J	J	A	S	O	N	D	J 12	F	M	A	M	J	J	A	S	O	N	D	J 13	F	M	A	M	J
Homes Sold	57	56	37	34	40	43	31	34	37	52	58	67	56	66	57	49	37	49	38	27	47	55	68	73	72	85	52	64	67	68	46	54	53	81	98	90
3 Mo. Roll Avg			50	42	37	39	38	36	34	41	49	59	60	63	60	57	48	45	41	38	37	43	57	65	71	77	70	67	61	66	60	56	51	63	77	90

(000's)	J 10	A	S	O	N	D	J 11	F	M	A	M	J	J	A	S	O	N	D	J 12	F	M	A	M	J	J	A	S	O	N	D	J 13	F	M	A	M	J
Median Sale Price	445	407	511	380	440	328	365	410	408	465	386	393	329	472	375	337	376	270	315	270	235	314	338	355	455	355	430	358	310	352	296	314	323	389	383	482
3 Mo. Roll Avg			454	433	444	383	377	367	394	428	419	415	369	398	392	395	363	328	320	285	273	273	296	336	383	388	413	381	366	340	319	321	311	342	365	418

	J 10	A	S	O	N	D	J 11	F	M	A	M	J	J	A	S	O	N	D	J 12	F	M	A	M	J	J	A	S	O	N	D	J 13	F	M	A	M	J
Inventory	641	620	601	598	557	507	483	506	538	562	580	576	565	555	504	496	469	426	421	418	413	413	418	393	391	373	364	337	294	252	256	241	231	235	228	206
MSI	11	11	16	18	14	12	16	15	15	11	10	9	10	8	9	10	13	9	11	15	9	8	6	5	5	4	7	5	4	4	6	4	4	3	2	2

	J 10	A	S	O	N	D	J 11	F	M	A	M	J	J	A	S	O	N	D	J 12	F	M	A	M	J	J	A	S	O	N	D	J 13	F	M	A	M	J
Days On Market	127	101	113	85	135	92	134	105	133	97	97	109	97	111	94	82	86	92	117	108	98	121	84	89	82	61	87	99	87	59	95	84	112	79	69	75
3 Mo. Roll Avg			114	100	111	104	120	110	124	112	109	101	101	106	101	96	87	87	98	106	108	109	101	98	85	77	77	82	91	82	80	79	97	92	87	74

	J 10	A	S	O	N	D	J 11	F	M	A	M	J	J	A	S	O	N	D	J 12	F	M	A	M	J	J	A	S	O	N	D	J 13	F	M	A	M	J
Price per Sq Ft	217	192	176	140	177	191	174	175	204	180	170	208	180	190	181	198	184	173	175	152	158	159	177	183	193	182	189	185	181	185	158	183	171	190	180	206
3 Mo. Roll Avg			195	169	164	169	181	180	184	186	185	186	186	193	184	190	188	185	177	167	162	156	165	173	184	186	188	185	185	184	175	175	171	181	180	192

	J 10	A	S	O	N	D	J 11	F	M	A	M	J	J	A	S	O	N	D	J 12	F	M	A	M	J	J	A	S	O	N	D	J 13	F	M	A	M	J
Sale to List Price	0.912	0.938	0.933	0.938	0.919	0.933	0.937	0.933	0.917	0.939	0.924	0.939	0.934	0.924	0.938	0.946	0.939	0.914	0.923	0.933	0.953	0.937	0.929	0.926	0.957	0.943	0.937	0.950	0.954	0.942	0.952	0.964	0.943	0.968	0.967	0.964
3 Mo. Roll Avg			0.928	0.936	0.930	0.930	0.930	0.934	0.929	0.930	0.927	0.934	0.932	0.932	0.932	0.936	0.941	0.933	0.925	0.923	0.936	0.941	0.940	0.931	0.937	0.942	0.946	0.943	0.947	0.949	0.949	0.953	0.953	0.958	0.959	0.966

	J 10	A	S	O	N	D	J 11	F	M	A	M	J	J	A	S	O	N	D	J 12	F	M	A	M	J	J	A	S	O	N	D	J 13	F	M	A	M	J
New Listings	91	112	94	119	69	46	89	98	135	140	137	112	111	121	80	103	66	48	98	88	123	119	116	107	109	108	94	91	64	39	105	93	129	140	141	129
Inventory	641	620	601	598	557	507	483	506	538	562	580	576	565	555	504	496	469	426	421	418	413	413	418	393	391	373	364	337	294	252	256	241	231	235	228	206
Sales	57	56	37	34	40	43	31	34	37	52	58	67	56	66	57	49	37	49	38	27	47	55	68	73	72	85	52	64	67	68	46	54	53	81	98	90

(000's)	J 10	A	S	O	N	D	J 11	F	M	A	M	J	J	A	S	O	N	D	J 12	F	M	A	M	J	J	A	S	O	N	D	J 13	F	M	A	M	J
Avg Sale Price	502	496	583	406	432	463	437	479	523	484	396	491	472	494	428	417	457	423	349	358	342	452	411	445	523	431	476	419	357	418	358	376	384	432	420	518
3 Mo. Roll Avg			527	495	474	434	444	460	480	495	468	457	453	486	465	446	434	432	409	377	350	384	402	436	460	467	477	442	417	398	378	384	373	397	412	457

© 2013 Coldwell Banker Real Estate LLC. All Rights Reserved. Coldwell Banker Residential Brokerage fully supports the principles of the Fair Housing Act and the Equal Opportunity Act. Coldwell Banker Residential Brokerage is operated by a subsidiary of NRT LLC. Coldwell Banker and the Coldwell Banker Logo are registered service marks owned by Coldwell Banker Real Estate LLC.

Based on information from Midwest Real Estate Data LLC for the period 7/1/2010 through 6/30/2013. Due to MLS reporting methods and allowable reporting policy, this data is only informational and may not be completely accurate. Therefore, Coldwell Banker Residential Brokerage does not guarantee the data accuracy. Data maintained by the MLS's may not reflect all real estate activity in the market.

