

MLS Area: Winnetka



ART WILSON

Broker, Realtor

847-363-1599

www.NorthShoreHomesOnline.com

Art.Wilson@cbexchange.com



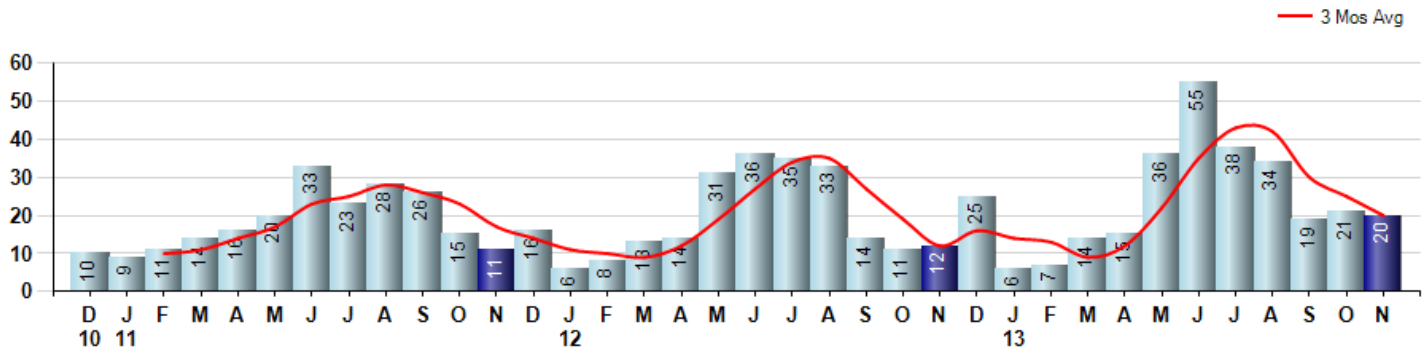
Price Range: \$0 to \$999,999,000 | Properties: Single Family Home, Townhome, Condo

Market Profile & Trends Overview	Month	Trending Versus*:				YTD	Trending Versus*:	
		LM	L3M	PYM	LY		PriorYTD	PriorYear
Median List Price of all Current Listings	\$1,839,000	↑		↑				
Average List Price of all Current Listings	\$2,294,358	↔		↓				
November Median Sales Price	\$927,500	↓	↓	↑	↓	\$950,000	↓	↔
November Average Sales Price	\$1,137,776	↓	↓	↑	↓	\$1,228,266	↑	↑
Total Properties Currently for Sale (Inventory)	89	↓		↓				
November Number of Properties Sold	20	↓		↑		265	↑	
November Average Days on Market (Solds)	65	↓	↑	↓	↓	66	↓	↓
November Month's Supply of Inventory	4.5	↓	↓	↓	↓	7.3	↓	↓
November Sale Price vs List Price Ratio	96.7%	↑	↑	↑	↑	94.7%	↑	↑

* LM=Last Month / L3M=Last 3 Months / PYM=Same Month Prior Year / LY=Last Year / YTD = Year-to-date

Property Sales

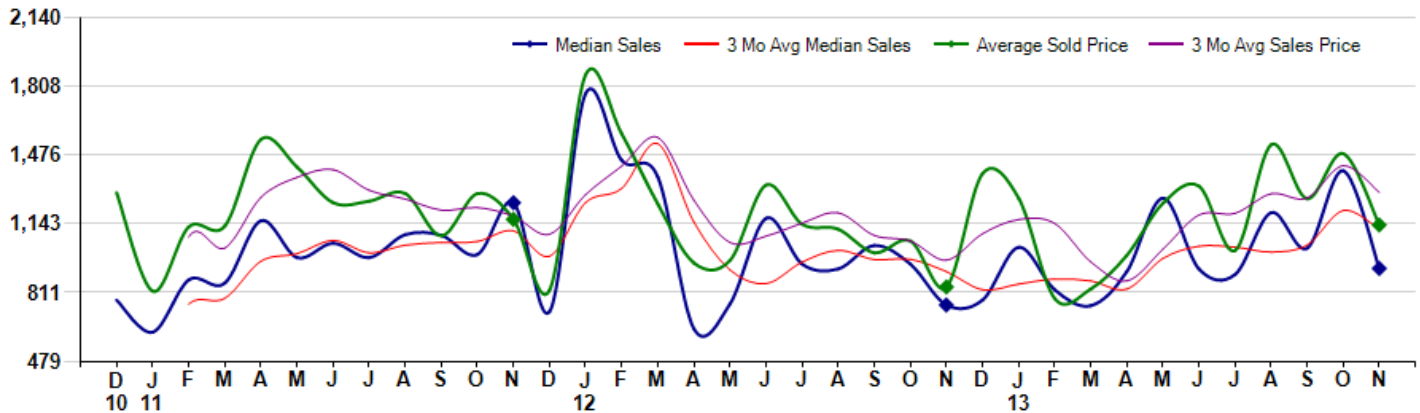
November Property sales were 20, up 66.7% from 12 in November of 2012 and -4.8% lower than the 21 sales last month. November 2013 sales were at their highest level compared to November of 2012 and 2011. November YTD sales of 265 are running 24.4% ahead of last year's year-to-date sales of 213.



Prices

The Median Sales Price in November was \$927,500, up 23.5% from \$751,000 in November of 2012 and down -33.8% from \$1,400,000 last month. The Average Sales Price in November was \$1,137,776, up 35.7% from \$838,208 in November of 2012 and down -23.3% from \$1,482,823 last month. November 2013 ASP was at a mid range compared to November of 2012 and 2011.

Median means Middle (the same # of properties sold above and below Median) (000's)



MLS Area: Winnetka



ART WILSON
 Broker, Realtor
 847-363-1599
 www.NorthShoreHomesOnline.com
 Art.Wilson@cbexchange.com



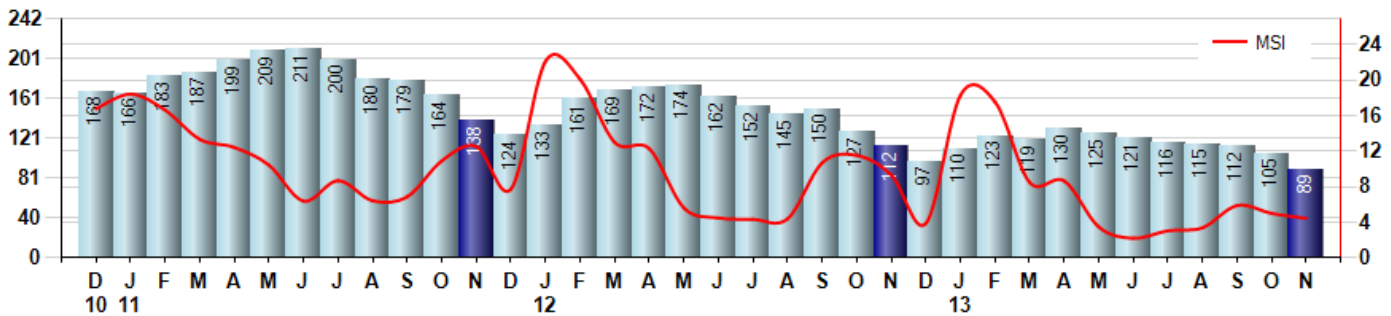
Price Range: \$0 to \$999,999,000 | Properties: Single Family Home, Townhome, Condo

Inventory & MSI

The Total Inventory of Properties available for sale as of November was 89, down -15.2% from 105 last month and down -20.5% from 112 in November of last year. November 2013 Inventory was at the lowest level compared to November of 2012 and 2011.

A comparatively lower MSI is more beneficial for sellers while a higher MSI is better for buyers. The November 2013 MSI of 4.5 months was at its lowest level compared with November of 2012 and 2011.

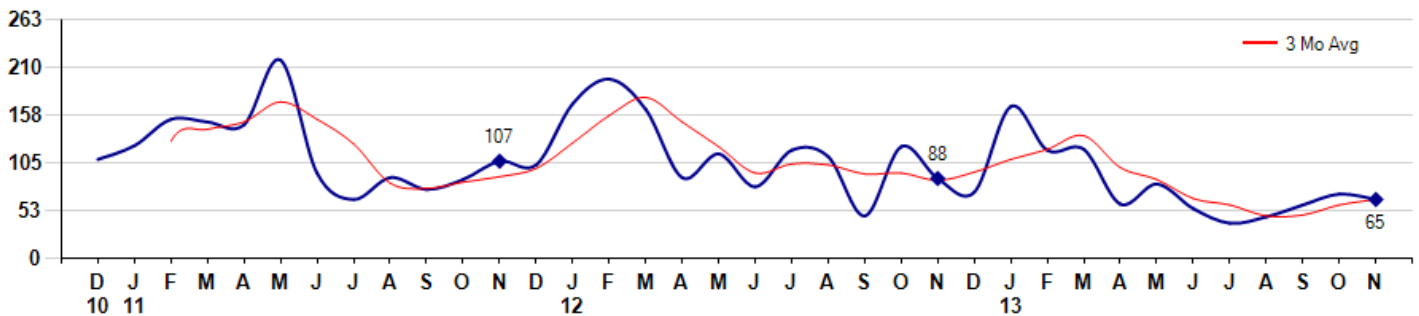
MSI is the # of months needed to sell all of the Inventory at the monthly Sales Pace



Market Time

The average Days On Market(DOM) shows how many days the average Property is on the Market before it sells. An upward trend in DOM tends to indicate a move towards more of a Buyer's market, a downward trend a move towards more of a Seller's market. The DOM for November was 65, down -8.5% from 71 days last month and down -26.1% from 88 days in November of last year. The November 2013 DOM was at its lowest level compared with November of 2012 and 2011.

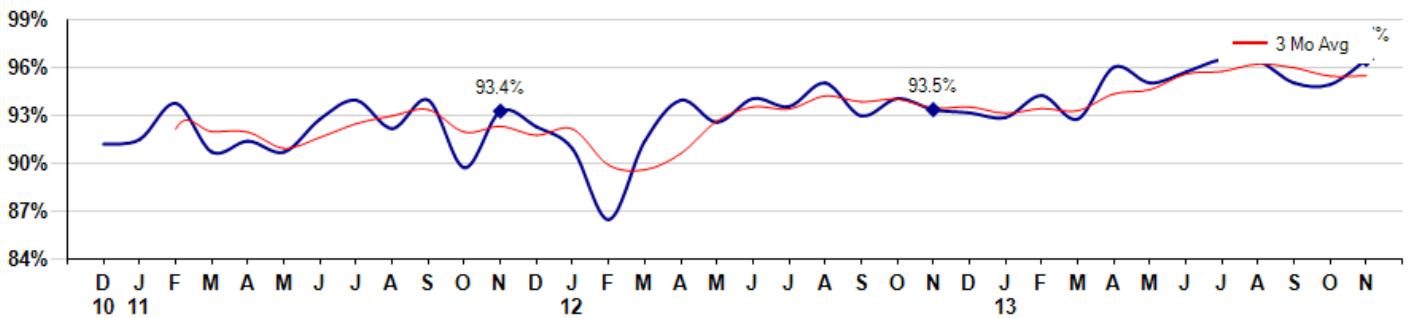
Average Days on Market(Listing to Contract) for properties sold during the month



Selling Price vs Listing Price

The Selling Price vs Listing Price reveals the average amount that Sellers are agreeing to come down from their list price. The lower the ratio is below 100% the more of a Buyer's market exists, a ratio at or above 100% indicates more of a Seller's market. The November 2013 Selling Price vs List Price of 96.7% was up from 95.1% last month and up from 93.5% in November of last year.

Avg Selling Price divided by Avg Listing Price for sold properties during the month



© 2013 Coldwell Banker Real Estate LLC. All Rights Reserved. Coldwell Banker Residential Brokerage fully supports the principles of the Fair Housing Act and the Equal Opportunity Act. Coldwell Banker Residential Brokerage is operated by a subsidiary of NRT LLC. Coldwell Banker and the Coldwell Banker Logo are registered service marks owned by Coldwell Banker Real Estate LLC.

Based on information from Midwest Real Estate Data LLC for the period 12/1/2010 through 11/30/2013. Due to MLS reporting methods and allowable reporting policy, this data is only informational and may not be completely accurate. Therefore, Coldwell Banker Residential Brokerage does not guarantee the data accuracy. Data maintained by the MLS's may not reflect all real estate activity in the market.



MLS Area: Winnetka



ART WILSON

Broker, Realtor

847-363-1599

www.NorthShoreHomesOnline.com

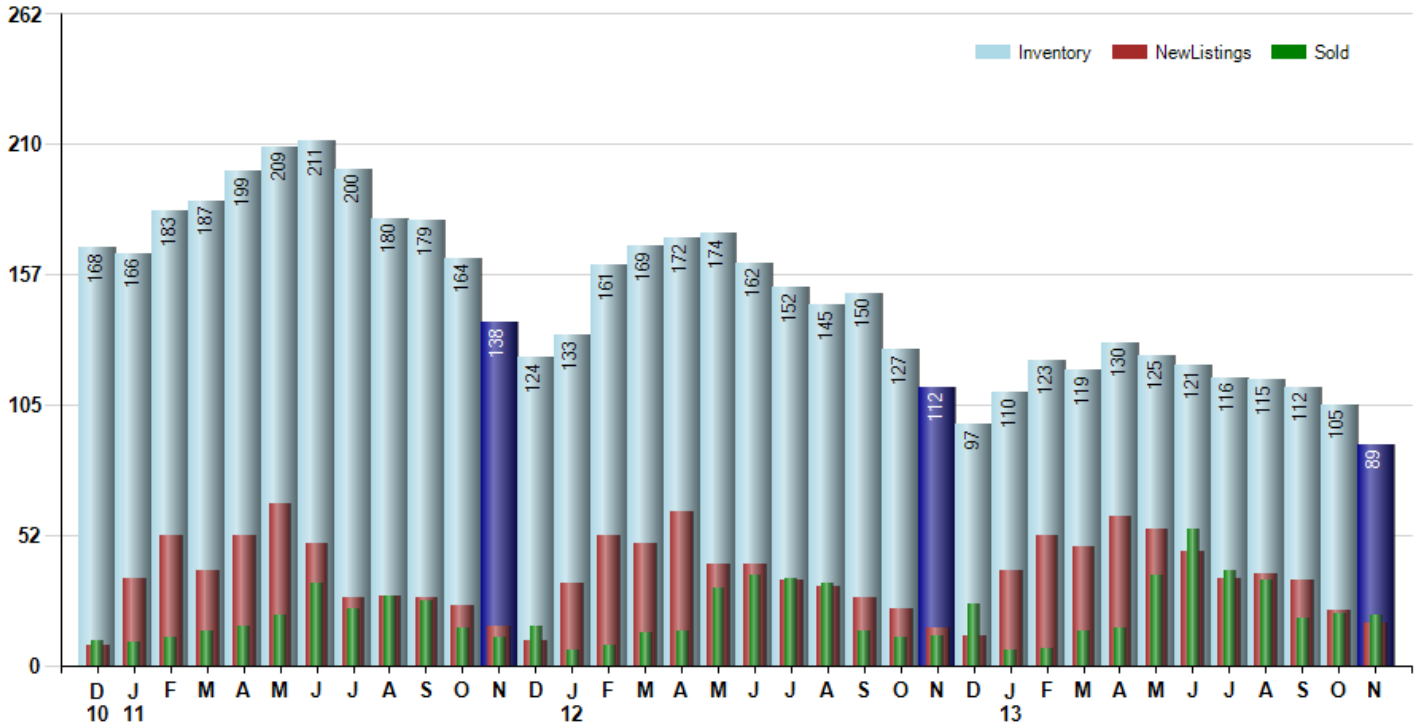
Art.Wilson@cbexchange.com



Price Range: \$0 to \$999,999,000 | Properties: Single Family Home, Townhome, Condo

Inventory / New Listings / Sales

This last view of the market combines monthly inventory of Properties for sale along with New Listings and Sales. The graph shows the basic annual seasonality of the market as well as the relationship between these items. The number of New Listings in November 2013 was 17, down -22.7% from 22 last month and up 13.3% from 15 in November of last year.



© 2013 Coldwell Banker Real Estate LLC. All Rights Reserved. Coldwell Banker Residential Brokerage fully supports the principles of the Fair Housing Act and the Equal Opportunity Act. Coldwell Banker Residential Brokerage is operated by a subsidiary of NRT LLC. Coldwell Banker and the Coldwell Banker Logo are registered service marks owned by Coldwell Banker Real Estate LLC.

Based on information from Midwest Real Estate Data LLC for the period 12/1/2010 through 11/30/2013. Due to MLS reporting methods and allowable reporting policy, this data is only informational and may not be completely accurate. Therefore, Coldwell Banker Residential Brokerage does not guarantee the data accuracy. Data maintained by the MLS's may not reflect all real estate activity in the market.



MARKET ACTION REPORT

November 2013

MLS Area: Winnetka



ART WILSON
 Broker, Realtor
 847-363-1599
 www.NorthShoreHomesOnline.com
 Art.Wilson@cbexchange.com



Price Range: \$0 to \$999,999,000 | Properties: Single Family Home, Townhome, Condo

	D 10	J 11	F	M	A	M	J	J	A	S	O	N	D	J 12	F	M	A	M	J	J	A	S	O	N	D	J 13	F	M	A	M	J	J	A	S	O	N
Homes Sold	10	9	11	14	16	20	33	23	28	26	15	11	16	6	8	13	14	31	36	35	33	14	11	12	25	6	7	14	15	36	55	38	34	19	21	20
3 Mo. Roll Avg			10	11	14	17	23	25	28	26	23	17	14	11	10	9	12	19	27	34	35	27	19	12	16	14	13	9	12	22	35	43	42	30	25	20

(000's)	D 10	J 11	F	M	A	M	J	J	A	S	O	N	D	J 12	F	M	A	M	J	J	A	S	O	N	D	J 13	F	M	A	M	J	J	A	S	O	N
Median Sale Price	775	620	873	858	1,159	980	1,050	980	1,091	1,088	995	1,245	720	1,772	1,450	1,370	636	757	1,170	949	925	1,039	949	751	775	1,030	825	748	912	1,268	925	899	1,198	1,025	1,400	928
3 Mo. Roll Avg			756	783	963	999	1,063	1,003	1,040	1,053	1,058	1,109	987	1,246	1,314	1,531	1,152	921	854	959	1,015	971	971	913	825	852	877	868	828	976	1,035	1,030	1,007	1,040	1,208	1,118

	D 10	J 11	F	M	A	M	J	J	A	S	O	N	D	J 12	F	M	A	M	J	J	A	S	O	N	D	J 13	F	M	A	M	J	J	A	S	O	N
Inventory	168	166	183	187	199	209	211	200	180	179	164	138	124	133	161	169	172	174	162	152	145	150	127	112	97	110	123	119	130	125	121	116	115	112	105	89
MSI	17	18	17	13	12	10	6	9	6	7	11	13	8	22	20	13	12	6	5	4	4	11	12	9	4	18	18	9	9	3	2	3	3	6	5	4

	D 10	J 11	F	M	A	M	J	J	A	S	O	N	D	J 12	F	M	A	M	J	J	A	S	O	N	D	J 13	F	M	A	M	J	J	A	S	O	N
Days On Market	109	124	153	150	147	218	94	65	89	76	87	107	103	170	197	164	89	115	79	119	112	47	123	88	73	167	119	120	60	82	55	39	46	59	71	65
3 Mo. Roll Avg			129	142	150	172	153	126	83	77	84	90	99	127	157	177	150	123	94	104	103	93	94	86	95	109	120	135	100	87	66	59	47	48	59	65

	D 10	J 11	F	M	A	M	J	J	A	S	O	N	D	J 12	F	M	A	M	J	J	A	S	O	N	D	J 13	F	M	A	M	J	J	A	S	O	N
Price per Sq Ft	242	204	278	263	341	306	358	307	329	337	296	331	276	420	330	289	272	281	325	324	285	268	327	290	279	284	335	196	332	287	364	352	317	329	315	308
3 Mo. Roll Avg			241	248	294	303	335	324	331	324	321	321	301	342	342	346	297	281	293	310	311	292	293	295	299	284	299	272	288	272	328	334	344	333	320	317

	D 10	J 11	F	M	A	M	J	J	A	S	O	N	D	J 12	F	M	A	M	J	J	A	S	O	N	D	J 13	F	M	A	M	J	J	A	S	O	N
Sale to List Price	0.913	0.916	0.939	0.908	0.915	0.908	0.929	0.941	0.923	0.941	0.898	0.934	0.924	0.910	0.865	0.915	0.941	0.927	0.942	0.937	0.952	0.931	0.942	0.935	0.933	0.930	0.944	0.929	0.962	0.952	0.959	0.967	0.966	0.952	0.951	0.967
3 Mo. Roll Avg			0.923	0.921	0.921	0.910	0.917	0.926	0.931	0.935	0.921	0.924	0.919	0.923	0.900	0.897	0.907	0.928	0.937	0.935	0.944	0.940	0.942	0.936	0.937	0.933	0.936	0.934	0.945	0.948	0.958	0.959	0.964	0.962	0.956	0.957

	D 10	J 11	F	M	A	M	J	J	A	S	O	N	D	J 12	F	M	A	M	J	J	A	S	O	N	D	J 13	F	M	A	M	J	J	A	S	O	N
New Listings	8	35	52	38	52	65	49	27	28	27	24	16	10	33	52	49	62	41	41	34	32	27	23	15	12	38	52	48	60	55	46	35	37	34	22	17
Inventory	168	166	183	187	199	209	211	200	180	179	164	138	124	133	161	169	172	174	162	152	145	150	127	112	97	110	123	119	130	125	121	116	115	112	105	89
Sales	10	9	11	14	16	20	33	23	28	26	15	11	16	6	8	13	14	31	36	35	33	14	11	12	25	6	7	14	15	36	55	38	34	19	21	20

(000's)	D 10	J 11	F	M	A	M	J	J	A	S	O	N	D	J 12	F	M	A	M	J	J	A	S	O	N	D	J 13	F	M	A	M	J	J	A	S	O	N
Avg Sale Price	1,294	818	1,129	1,133	1,551	1,417	1,246	1,253	1,290	1,086	1,289	1,165	824	1,863	1,579	1,239	954	966	1,331	1,142	1,118	1,003	1,061	838	1,386	1,268	783	828	991	1,242	1,325	1,014	1,526	1,264	1,483	1,138
3 Mo. Roll Avg			1,080	1,026	1,271	1,367	1,405	1,305	1,263	1,210	1,222	1,180	1,093	1,284	1,422	1,560	1,257	1,053	1,084	1,146	1,197	1,087	1,061	967	1,095	1,164	1,145	960	867	1,020	1,186	1,194	1,288	1,268	1,424	1,295

© 2013 Coldwell Banker Real Estate LLC. All Rights Reserved. Coldwell Banker Residential Brokerage fully supports the principles of the Fair Housing Act and the Equal Opportunity Act. Coldwell Banker Residential Brokerage is operated by a subsidiary of NRT LLC. Coldwell Banker and the Coldwell Banker Logo are registered service marks owned by Coldwell Banker Real Estate LLC.

Based on information from Midwest Real Estate Data LLC for the period 12/1/2010 through 11/30/2013. Due to MLS reporting methods and allowable reporting policy, this data is only informational and may not be completely accurate. Therefore, Coldwell Banker Residential Brokerage does not guarantee the data accuracy. Data maintained by the MLS's may not reflect all real estate activity in the market.

