

MLS Area: Northbrook



ART WILSON

Broker, Realtor

847-363-1599

www.NorthShoreHomesOnline.com

Art.Wilson@cbexchange.com



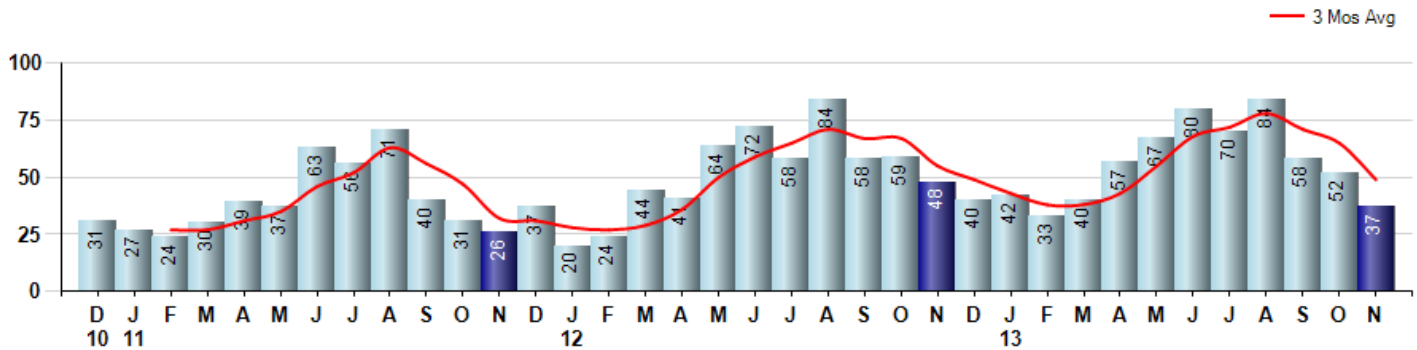
Price Range: \$0 to \$999,999,000 | Properties: Single Family Home, Townhome, Condo

Market Profile & Trends Overview	Month	Trending Versus*:				YTD	Trending Versus*:	
		LM	L3M	PYM	LY		PriorYTD	PriorYear
Median List Price of all Current Listings	\$495,000	↑		↑				
Average List Price of all Current Listings	\$655,539	↑		↑				
November Median Sales Price	\$418,500	↑	↑	↑	↑	\$386,000	↑	↑
November Average Sales Price	\$548,322	↑	↑	↑	↑	\$440,664	↑	↑
Total Properties Currently for Sale (Inventory)	172	↓		↓				
November Number of Properties Sold	37	↓		↓		620	↑	
November Average Days on Market (Solds)	61	↑	↑	↓	↓	57	↓	↓
November Month's Supply of Inventory	4.6	↑	↑	↑	↓	3.5	↓	↓
November Sale Price vs List Price Ratio	96.7%	↑	↑	↑	↑	95.8%	↑	↑

* LM=Last Month / L3M=Last 3 Months / PYM=Same Month Prior Year / LY=Last Year / YTD = Year-to-date

Property Sales

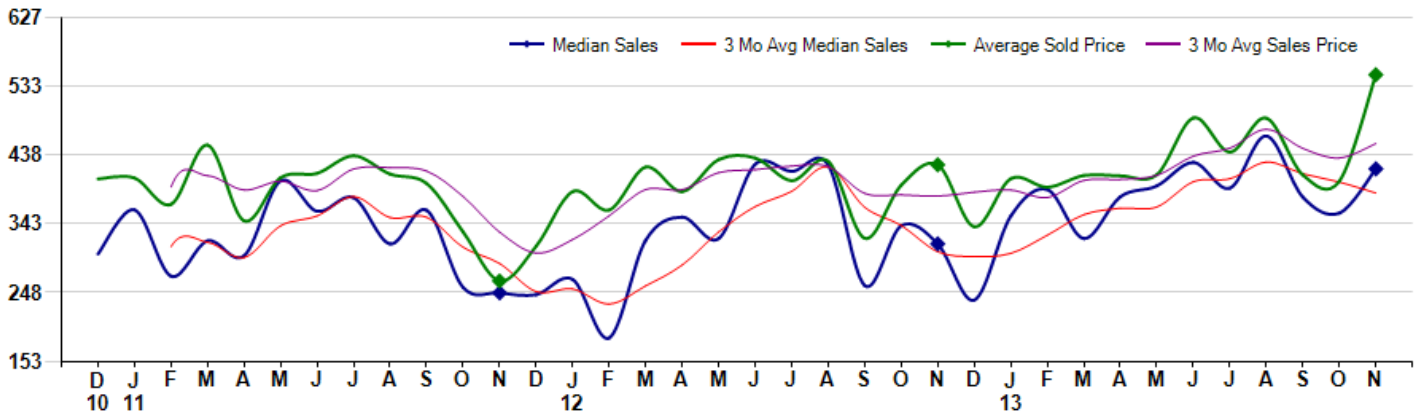
November Property sales were 37, down -22.9% from 48 in November of 2012 and -28.8% lower than the 52 sales last month. November 2013 sales were at a mid level compared to November of 2012 and 2011. November YTD sales of 620 are running 8.4% ahead of last year's year-to-date sales of 572.



Prices

The Median Sales Price in November was \$418,500, up 32.9% from \$315,000 in November of 2012 and up 17.1% from \$357,500 last month. The Average Sales Price in November was \$548,322, up 29.3% from \$424,094 in November of 2012 and up 36.5% from \$401,661 last month. November 2013 ASP was at highest level compared to November of 2012 and 2011.

Median means Middle (the same # of properties sold above and below Median) (000's)



MLS Area: Northbrook



ART WILSON
 Broker, Realtor
 847-363-1599
 www.NorthShoreHomesOnline.com
 Art.Wilson@cbexchange.com



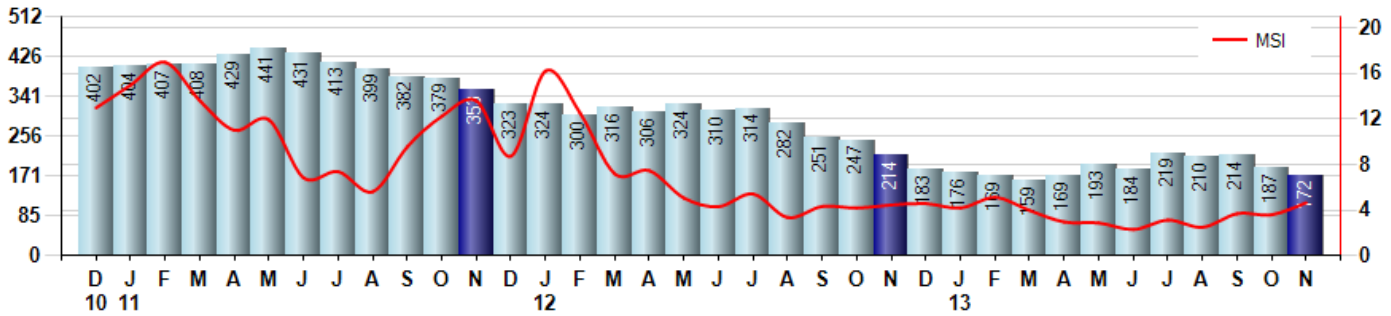
Price Range: \$0 to \$999,999,000 | Properties: Single Family Home, Townhome, Condo

Inventory & MSI

The Total Inventory of Properties available for sale as of November was 172, down -8.0% from 187 last month and down -19.6% from 214 in November of last year. November 2013 Inventory was at the lowest level compared to November of 2012 and 2011.

A comparatively lower MSI is more beneficial for sellers while a higher MSI is better for buyers. The November 2013 MSI of 4.6 months was at a mid range compared with November of 2012 and 2011.

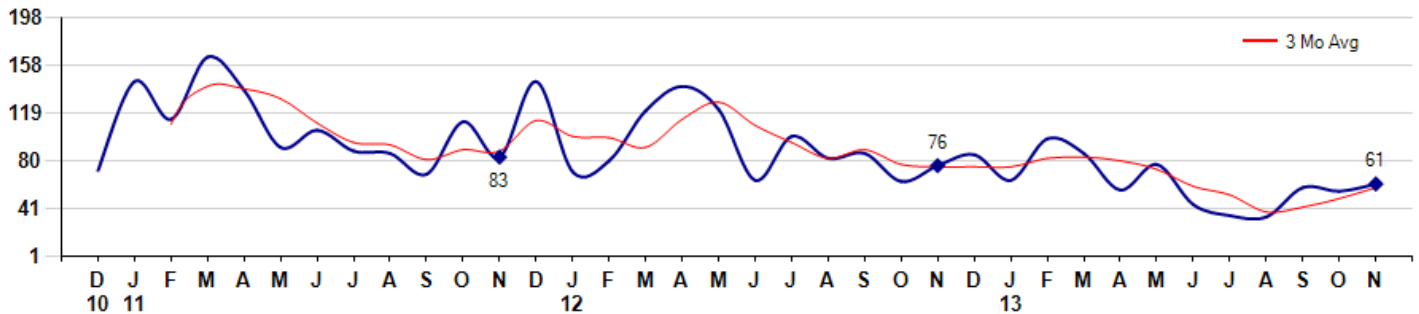
MSI is the # of months needed to sell all of the Inventory at the monthly Sales Pace



Market Time

The average Days On Market(DOM) shows how many days the average Property is on the Market before it sells. An upward trend in DOM tends to indicate a move towards more of a Buyer's market, a downward trend a move towards more of a Seller's market. The DOM for November was 61, up 10.9% from 55 days last month and down -19.7% from 76 days in November of last year. The November 2013 DOM was at its lowest level compared with November of 2012 and 2011.

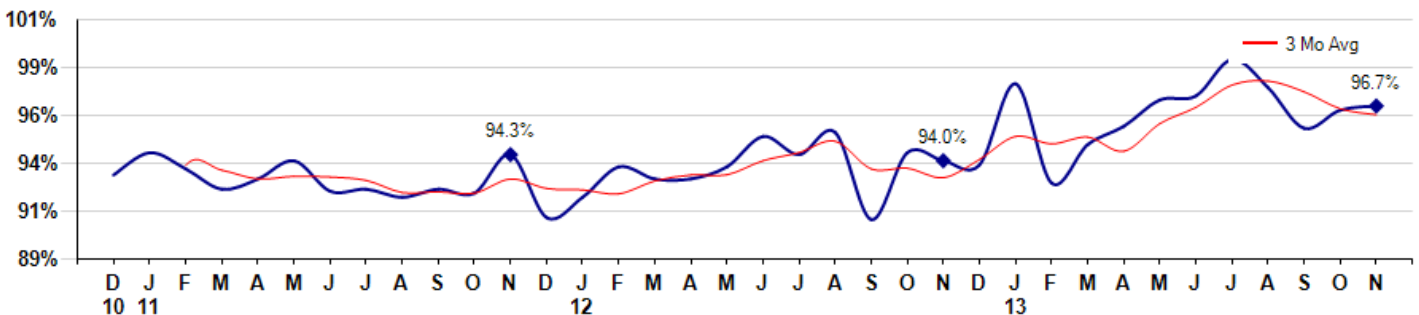
Average Days on Market(Listing to Contract) for properties sold during the month



Selling Price vs Listing Price

The Selling Price vs Listing Price reveals the average amount that Sellers are agreeing to come down from their list price. The lower the ratio is below 100% the more of a Buyer's market exists, a ratio at or above 100% indicates more of a Seller's market. The November 2013 Selling Price vs List Price of 96.7% was up from 96.5% last month and up from 94.0% in November of last year.

Avg Selling Price divided by Avg Listing Price for sold properties during the month



© 2013 Coldwell Banker Real Estate LLC. All Rights Reserved. Coldwell Banker Residential Brokerage fully supports the principles of the Fair Housing Act and the Equal Opportunity Act. Coldwell Banker Residential Brokerage is operated by a subsidiary of NRT LLC. Coldwell Banker and the Coldwell Banker Logo are registered service marks owned by Coldwell Banker Real Estate LLC.

Based on information from Midwest Real Estate Data LLC for the period 12/1/2010 through 11/30/2013. Due to MLS reporting methods and allowable reporting policy, this data is only informational and may not be completely accurate. Therefore, Coldwell Banker Residential Brokerage does not guarantee the data accuracy. Data maintained by the MLS's may not reflect all real estate activity in the market.



MLS Area: Northbrook



ART WILSON

Broker, Realtor

847-363-1599

www.NorthShoreHomesOnline.com

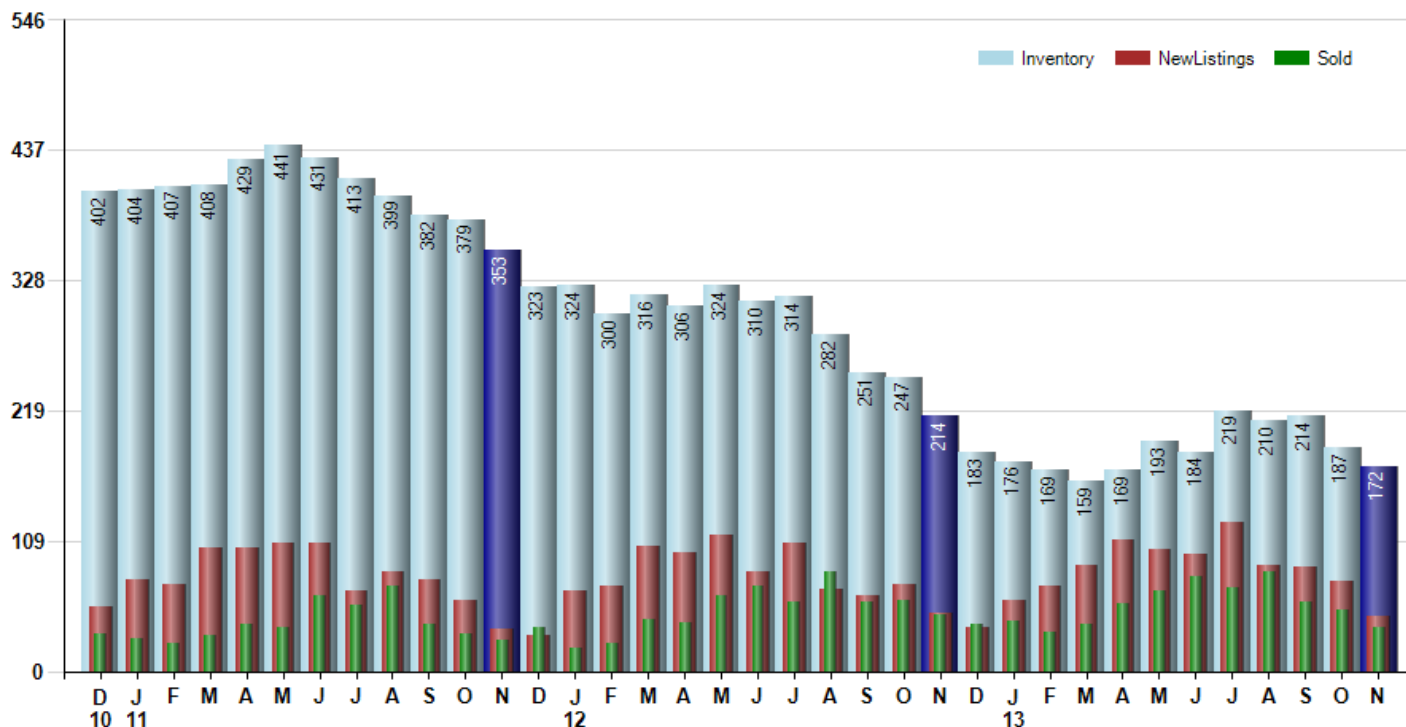
Art.Wilson@cbexchange.com



Price Range: \$0 to \$999,999,000 | Properties: Single Family Home, Townhome, Condo

Inventory / New Listings / Sales

This last view of the market combines monthly inventory of Properties for sale along with New Listings and Sales. The graph shows the basic annual seasonality of the market as well as the relationship between these items. The number of New Listings in November 2013 was 46, down -38.7% from 75 last month and down -6.1% from 49 in November of last year.



© 2013 Coldwell Banker Real Estate LLC. All Rights Reserved. Coldwell Banker Residential Brokerage fully supports the principles of the Fair Housing Act and the Equal Opportunity Act. Coldwell Banker Residential Brokerage is operated by a subsidiary of NRT LLC. Coldwell Banker and the Coldwell Banker Logo are registered service marks owned by Coldwell Banker Real Estate LLC.

Based on information from Midwest Real Estate Data LLC for the period 12/1/2010 through 11/30/2013. Due to MLS reporting methods and allowable reporting policy, this data is only informational and may not be completely accurate. Therefore, Coldwell Banker Residential Brokerage does not guarantee the data accuracy. Data maintained by the MLS's may not reflect all real estate activity in the market.



MARKET ACTION REPORT

November 2013

MLS Area: Northbrook



ART WILSON
 Broker, Realtor
 847-363-1599
 www.NorthShoreHomesOnline.com
 Art.Wilson@cbexchange.com



Price Range: \$0 to \$999,999,000 | Properties: Single Family Home, Townhome, Condo

	D 10	J 11	F	M	A	M	J	J	A	S	O	N	D	J 12	F	M	A	M	J	J	A	S	O	N	D	J 13	F	M	A	M	J	J	A	S	O	N
Homes Sold	31	27	24	30	39	37	63	56	71	40	31	26	37	20	24	44	41	64	72	58	84	58	59	48	40	42	33	40	57	67	80	70	84	58	52	37
3 Mo. Roll Avg			27	27	31	35	46	52	63	56	47	32	31	28	27	29	36	50	59	65	71	67	67	55	49	43	38	38	43	55	68	72	78	71	65	49

	(000's) D 10	J 11	F	M	A	M	J	J	A	S	O	N	D	J 12	F	M	A	M	J	J	A	S	O	N	D	J 13	F	M	A	M	J	J	A	S	O	N
Median Sale Price	301	362	271	319	299	402	360	379	315	362	255	248	245	266	185	320	352	323	425	415	424	258	340	315	238	354	390	323	380	395	428	392	464	380	358	419
3 Mo. Roll Avg			311	317	296	340	354	380	351	352	311	288	249	253	232	257	286	332	366	387	421	365	340	304	298	302	327	355	364	366	401	405	428	412	400	385

	D 10	J 11	F	M	A	M	J	J	A	S	O	N	D	J 12	F	M	A	M	J	J	A	S	O	N	D	J 13	F	M	A	M	J	J	A	S	O	N
Inventory	402	404	407	408	429	441	431	413	399	382	379	353	323	324	300	316	306	324	310	314	282	251	247	214	183	176	169	159	169	193	184	219	210	214	187	172
MSI	13	15	17	14	11	12	7	7	6	10	12	14	9	16	13	7	7	5	4	5	3	4	4	4	5	4	5	4	3	3	2	3	3	4	4	5

	D 10	J 11	F	M	A	M	J	J	A	S	O	N	D	J 12	F	M	A	M	J	J	A	S	O	N	D	J 13	F	M	A	M	J	J	A	S	O	N
Days On Market	72	145	114	165	138	91	105	88	86	69	112	83	145	71	80	121	141	122	64	100	82	86	63	76	85	64	98	86	56	77	44	35	34	58	55	61
3 Mo. Roll Avg			110	141	139	131	111	95	93	81	89	88	113	100	99	91	114	128	109	95	82	89	77	75	75	75	82	83	80	73	59	52	38	42	49	58

	D 10	J 11	F	M	A	M	J	J	A	S	O	N	D	J 12	F	M	A	M	J	J	A	S	O	N	D	J 13	F	M	A	M	J	J	A	S	O	N
Price per Sq Ft	164	175	164	169	167	171	170	175	167	166	145	165	157	159	140	178	159	160	180	172	177	151	167	173	144	176	158	172	186	207	198	186	187	188	182	181
3 Mo. Roll Avg			168	169	167	169	169	172	171	169	159	159	156	160	152	159	159	166	166	171	176	167	165	164	161	164	159	169	172	188	197	197	190	187	186	184

	D 10	J 11	F	M	A	M	J	J	A	S	O	N	D	J 12	F	M	A	M	J	J	A	S	O	N	D	J 13	F	M	A	M	J	J	A	S	O	N
Sale to List Price	0.933	0.944	0.936	0.926	0.931	0.940	0.925	0.926	0.922	0.926	0.924	0.943	0.912	0.922	0.937	0.931	0.931	0.937	0.952	0.943	0.954	0.911	0.944	0.940	0.938	0.978	0.929	0.948	0.957	0.970	0.972	0.990	0.976	0.956	0.965	0.967
3 Mo. Roll Avg			0.938	0.935	0.931	0.932	0.932	0.930	0.924	0.925	0.924	0.931	0.926	0.926	0.924	0.930	0.933	0.933	0.940	0.944	0.950	0.936	0.936	0.932	0.941	0.952	0.948	0.952	0.945	0.958	0.966	0.977	0.979	0.974	0.966	0.963

	D 10	J 11	F	M	A	M	J	J	A	S	O	N	D	J 12	F	M	A	M	J	J	A	S	O	N	D	J 13	F	M	A	M	J	J	A	S	O	N
New Listings	54	77	73	103	103	107	107	68	84	77	60	35	30	67	72	105	100	114	83	108	69	64	73	49	37	59	72	89	110	102	98	125	89	87	75	46
Inventory	402	404	407	408	429	441	431	413	399	382	379	353	323	324	300	316	306	324	310	314	282	251	247	214	183	176	169	159	169	193	184	219	210	214	187	172
Sales	31	27	24	30	39	37	63	56	71	40	31	26	37	20	24	44	41	64	72	58	84	58	59	48	40	42	33	40	57	67	80	70	84	58	52	37

	(000's) D 10	J 11	F	M	A	M	J	J	A	S	O	N	D	J 12	F	M	A	M	J	J	A	S	O	N	D	J 13	F	M	A	M	J	J	A	S	O	N
Avg Sale Price	405	406	370	451	347	406	412	437	411	399	332	264	312	387	362	421	387	431	434	402	429	323	396	424	339	405	393	409	409	410	489	442	489	410	402	548
3 Mo. Roll Avg			393	409	389	402	388	418	420	415	380	331	302	321	354	390	390	413	417	422	422	385	383	381	386	389	379	403	404	410	436	447	473	447	433	453

© 2013 Coldwell Banker Real Estate LLC. All Rights Reserved. Coldwell Banker Residential Brokerage fully supports the principles of the Fair Housing Act and the Equal Opportunity Act. Coldwell Banker Residential Brokerage is operated by a subsidiary of NRT LLC. Coldwell Banker and the Coldwell Banker Logo are registered service marks owned by Coldwell Banker Real Estate LLC.

Based on information from Midwest Real Estate Data LLC for the period 12/1/2010 through 11/30/2013. Due to MLS reporting methods and allowable reporting policy, this data is only informational and may not be completely accurate. Therefore, Coldwell Banker Residential Brokerage does not guarantee the data accuracy. Data maintained by the MLS's may not reflect all real estate activity in the market.

