

## MLS Area: Winnetka



**ART WILSON**  
 Broker, Realtor  
 847-363-1599  
 Art.Wilson@cbexchange.com



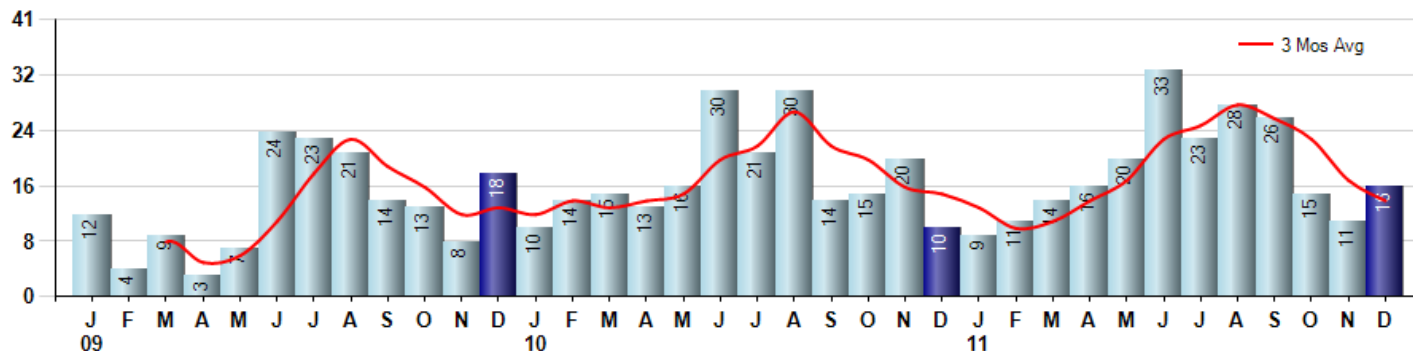
Price Range: ALL | Properties: Single Family Home, Townhome, Condo

Market Profile & Trends Overview	Month	Trending Versus*:				YTD	Trending Versus*:	
		LM	L3M	PYM	LY		PriorYTD	PriorYear
Median List Price of all Current Listings	\$1,472,500	↓		↔				
Average List Price of all Current Listings	\$1,849,604	↓						
December Median Sales Price	\$719,875	↓	↓	↓	↓	\$972,500	↓	↓
December Average Sales Price	\$823,568	↓	↓	↓	↓	\$1,209,057	↓	↓
Total Properties Currently for Sale (Inventory)	120	↓		↓				
December Number of Properties Sold	16	↑		↑		222	↑	
December Average Days on Market (Solds)	103	↓	↑	↓	↓	112	↓	↓
December Month's Supply of Inventory	7.5	↓	↓	↓	↓	10.9	↓	↓
December Sale Price vs List Price Ratio	85.4%	↓	↔	↑	↑	87.0%	↑	↑

\* LM=Last Month / L3M=Last 3 Months / PYM=Same Month Prior Year / LY=Last Year / YTD = Year-to-date

### Property Sales

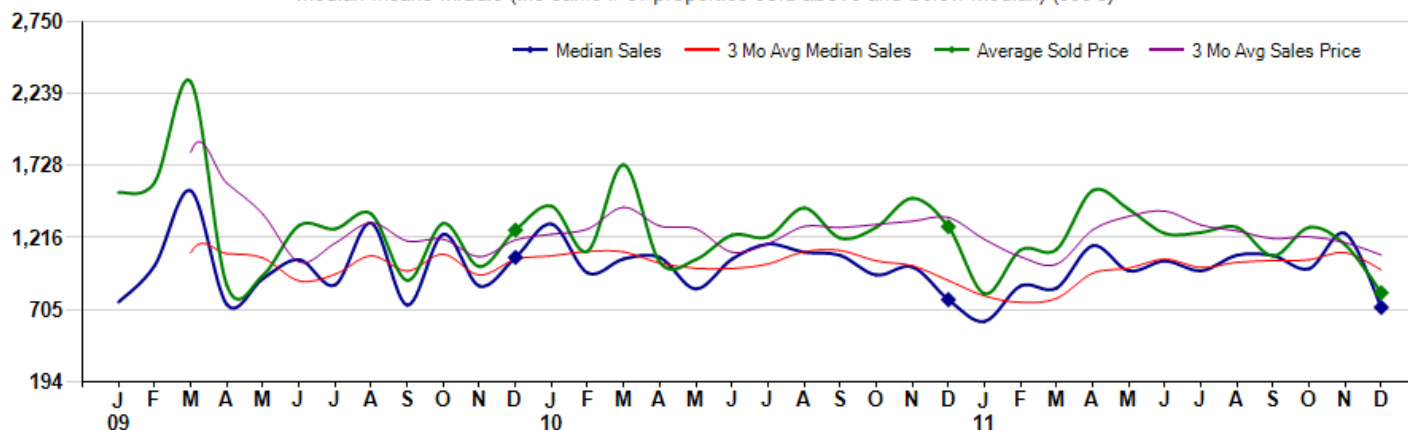
December Property sales were 16, up 60.0% from 10 in December of 2010 and 45.5% higher than the 11 sales last month. December 2011 sales were at a mid level compared to December of 2010 and 2009. December YTD sales of 222 are running 6.7% ahead of last year's year-to-date sales of 208.



### Prices

The Median Sales Price in December was \$719,875, down -7.1% from \$775,250 in December of 2010 and down -42.2% from \$1,245,000 last month. The Average Sales Price in December was \$823,568, down -36.3% from \$1,293,670 in December of 2010 and down -29.3% from \$1,164,963 last month. December 2011 ASP was at the lowest level compared to December of 2010 and 2009.

Median means Middle (the same # of properties sold above and below Median) (000's)



## MLS Area: Winnetka



**ART WILSON**  
 Broker, Realtor  
 847-363-1599  
 Art.Wilson@cbexchange.com



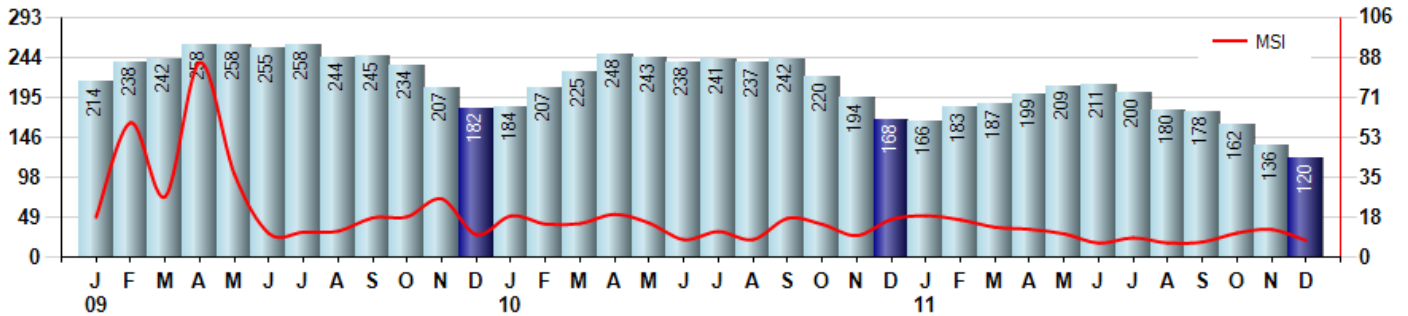
Price Range: ALL | Properties: Single Family Home, Townhome, Condo

### Inventory & MSI

The Total Inventory of Properties available for sale as of December was 120, down -11.8% from 136 last month and down -28.6% from 168 in December of last year. December 2011 Inventory was at the lowest level compared to December of 2010 and 2009.

A comparatively lower MSI is more beneficial for sellers while a higher MSI is better for buyers. The December 2011 MSI of 7.5 months was at its lowest level compared with December of 2010 and 2009.

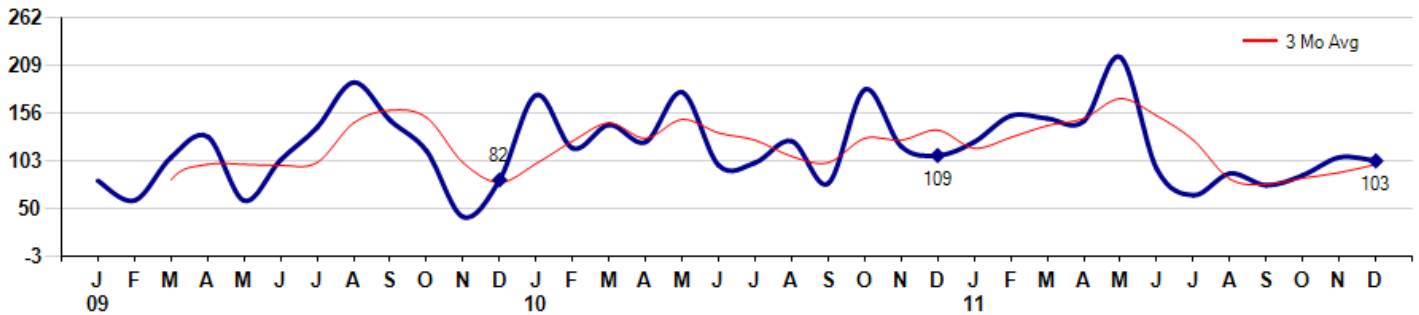
MSI is the # of months needed to sell all of the Inventory at the monthly Sales Pace



### Market Time

The average Days On Market (DOM) shows how many days the average Property is on the Market before it sells. An upward trend in DOM tends to indicate a move towards more of a Buyer's market, a downward trend a move towards more of a Seller's market. The DOM for December was 103, down -3.7% from 107 days last month and down -5.5% from 109 days in December of last year. The December 2011 DOM was at a mid range compared with December of 2010 and 2009.

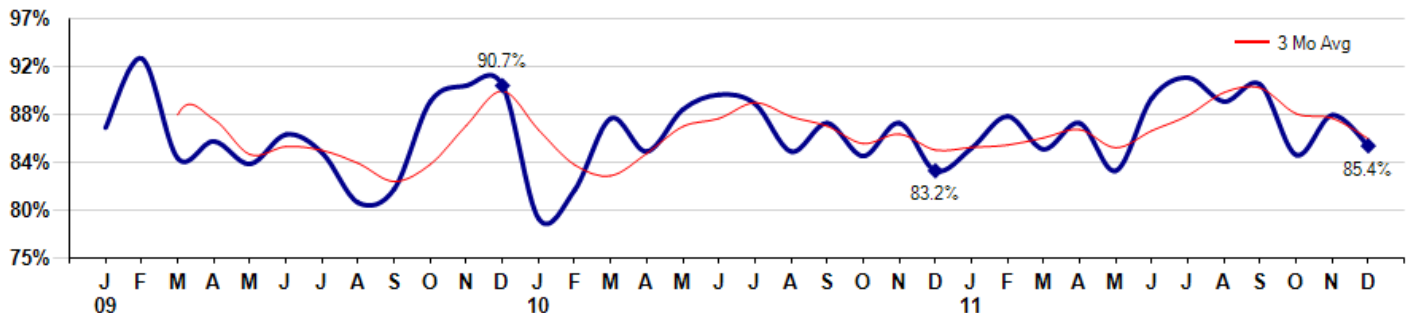
Average Days on Market (Listing to Contract) for properties sold during the month



### Selling Price vs Original Listing Price

The Selling Price vs Original Listing Price reveals the average amount that Sellers are agreeing to come down from their original list price. The lower the ratio is below 100% the more of a Buyer's market exists, a ratio at or above 100% indicates more of a Seller's market. The December 2011 Selling Price vs Original List Price of 85.4% was down from 88.1% last month and up from 83.2% in December of last year.

Avg Selling Price divided by Avg Listing Price for sold properties during the month



Based on information from Midwest Real Estate Data LLC for the period 1/1/2009 through 12/31/2011. Due to MLS reporting methods and allowable reporting policy, this data is only informational and may not be completely accurate. Therefore, Coldwell Banker Residential Brokerage does not guarantee the data accuracy. Data maintained by the MLS's may not reflect all real estate activity in the market.



## MLS Area: Winnetka



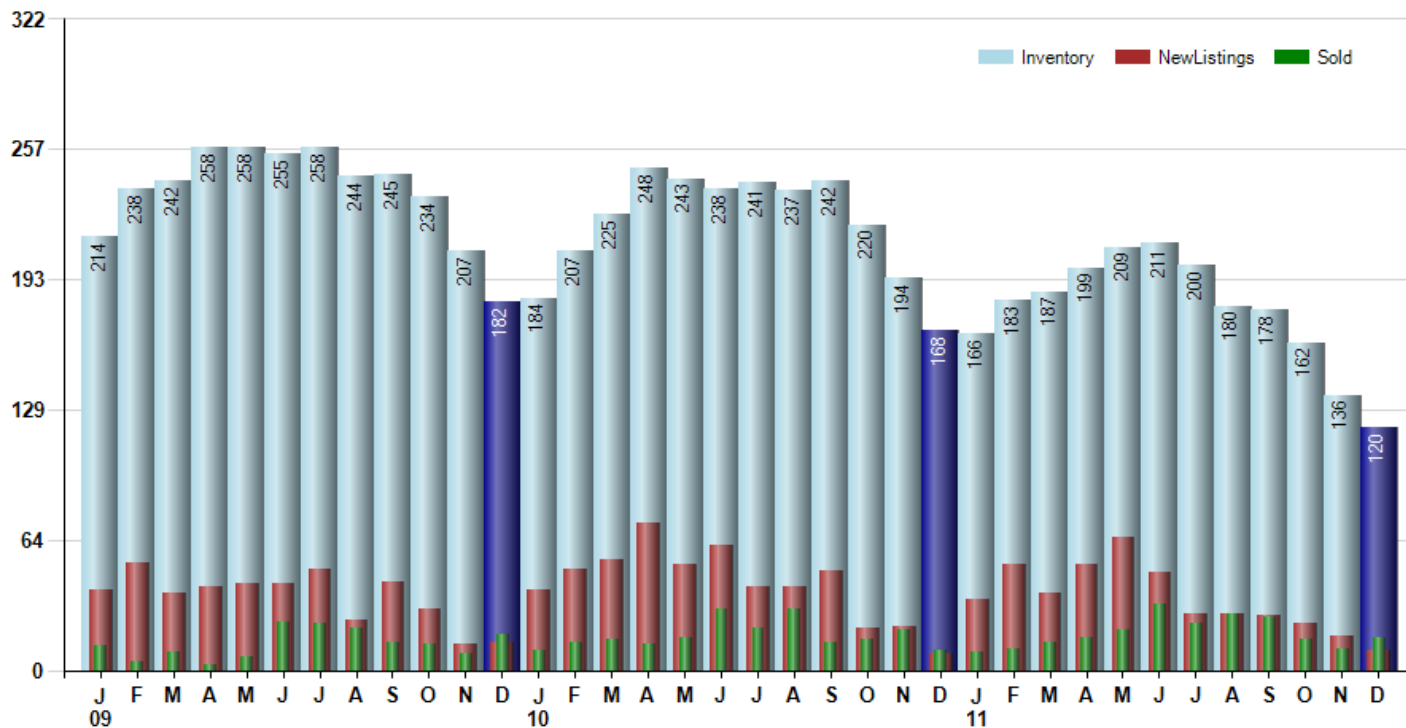
**ART WILSON**  
 Broker, Realtor  
 847-363-1599  
 Art.Wilson@cbexchange.com



Price Range: ALL | Properties: Single Family Home, Townhome, Condo

### Inventory / New Listings / Sales

This last view of the market combines monthly inventory of Properties for sale along with New Listings and Sales. The graph shows the basic annual seasonality of the market as well as the relationship between these items. The number of New Listings in December 2011 was 10, down -41.2% from 17 last month and up 25.0% from 8 in December of last year.



Based on information from Midwest Real Estate Data LLC for the period 1/1/2009 through 12/31/2011. Due to MLS reporting methods and allowable reporting policy, this data is only informational and may not be completely accurate. Therefore, Coldwell Banker Residential Brokerage does not guarantee the data accuracy. Data maintained by the MLS's may not reflect all real estate activity in the market.



## MLS Area: Winnetka



**ART WILSON**  
 Broker, Realtor  
 847-363-1599  
 Art.Wilson@cbexchange.com



Price Range: ALL | Properties: Single Family Home, Townhome, Condo

	J 09	F	M	A	M	J	J	A	S	O	N	D	J 10	F	M	A	M	J	J	A	S	O	N	D	J 11	F	M	A	M	J	J	A	S	O	N	D
Homes Sold	12	4	9	3	7	24	23	21	14	13	8	18	10	14	15	13	16	30	21	30	14	15	20	10	9	11	14	16	20	33	23	28	26	15	11	16
3 Mo. Roll Avg			8	5	6	11	18	23	19	16	12	13	12	14	13	14	15	20	22	27	22	20	16	15	13	10	11	14	17	23	25	28	26	23	17	14

(000's)	J 09	F	M	A	M	J	J	A	S	O	N	D	J 10	F	M	A	M	J	J	A	S	O	N	D	J 11	F	M	A	M	J	J	A	S	O	N	D
Median Sale Price	758	1,018	1,550	740	925	1,060	880	1,320	736	1,240	871	1,075	1,313	965	1,065	1,075	851	1,064	1,170	1,113	1,090	950	1,008	775	620	873	858	1,159	980	1,050	980	1,091	1,088	995	1,245	720
3 Mo. Roll Avg			1,108	1,103	1,072	908	955	1,087	979	1,099	949	1,062	1,086	1,118	1,114	1,035	997	997	1,028	1,115	1,124	1,051	1,016	911	801	756	783	963	999	1,063	1,003	1,040	1,053	1,058	1,109	987

	J 09	F	M	A	M	J	J	A	S	O	N	D	J 10	F	M	A	M	J	J	A	S	O	N	D	J 11	F	M	A	M	J	J	A	S	O	N	D
Inventory	214	238	242	258	258	255	258	244	245	234	207	182	184	207	225	248	243	238	241	237	242	220	194	168	166	183	187	199	209	211	200	180	178	162	136	120
MSI	18	60	27	86	37	11	11	12	18	18	26	10	18	15	15	19	15	8	11	8	17	15	10	17	18	17	13	12	10	6	9	6	7	11	12	8

	J 09	F	M	A	M	J	J	A	S	O	N	D	J 10	F	M	A	M	J	J	A	S	O	N	D	J 11	F	M	A	M	J	J	A	S	O	N	D
Days On Market	81	59	107	130	59	104	140	190	148	114	41	82	176	117	143	124	179	98	101	125	78	182	119	109	124	153	150	147	218	94	65	89	76	87	107	103
3 Mo. Roll Avg			82	99	99	98	101	145	159	151	101	79	100	125	145	128	149	134	126	108	101	128	126	137	117	129	142	150	172	153	126	83	77	84	90	99

	J 09	F	M	A	M	J	J	A	S	O	N	D	J 10	F	M	A	M	J	J	A	S	O	N	D	J 11	F	M	A	M	J	J	A	S	O	N	D
Price per Sq Ft	266	253	517	0	339	316	294	362	234	384	483	343	195	245	416	218	365	282	323	321	339	282	332	242	204	278	263	341	306	358	307	329	337	296	331	276
3 Mo. Roll Avg			345	257	285	218	316	324	297	327	367	403	340	261	285	293	333	288	323	309	328	314	318	285	259	241	248	294	303	335	324	331	324	321	321	301

	J 09	F	M	A	M	J	J	A	S	O	N	D	J 10	F	M	A	M	J	J	A	S	O	N	D	J 11	F	M	A	M	J	J	A	S	O	N	D
Sale to List Price	0.870	0.931	0.843	0.858	0.838	0.864	0.848	0.804	0.816	0.893	0.907	0.907	0.790	0.815	0.878	0.849	0.886	0.899	0.891	0.849	0.874	0.845	0.874	0.832	0.852	0.880	0.851	0.874	0.832	0.896	0.914	0.893	0.908	0.846	0.881	0.854
3 Mo. Roll Avg			0.881	0.877	0.846	0.853	0.850	0.839	0.823	0.838	0.872	0.902	0.868	0.837	0.828	0.847	0.871	0.878	0.892	0.880	0.871	0.856	0.864	0.850	0.853	0.855	0.861	0.868	0.852	0.867	0.881	0.901	0.905	0.882	0.878	0.860

	J 09	F	M	A	M	J	J	A	S	O	N	D	J 10	F	M	A	M	J	J	A	S	O	N	D	J 11	F	M	A	M	J	J	A	S	O	N	D
New Listings	40	53	38	41	43	43	50	25	44	30	13	14	40	50	55	73	52	62	41	41	49	21	22	8	35	52	38	52	66	48	28	28	27	23	17	10
Inventory	214	238	242	258	258	255	258	244	245	234	207	182	184	207	225	248	243	238	241	237	242	220	194	168	166	183	187	199	209	211	200	180	178	162	136	120
Sales	12	4	9	3	7	24	23	21	14	13	8	18	10	14	15	13	16	30	21	30	14	15	20	10	9	11	14	16	20	33	23	28	26	15	11	16

(000's)	J 09	F	M	A	M	J	J	A	S	O	N	D	J 10	F	M	A	M	J	J	A	S	O	N	D	J 11	F	M	A	M	J	J	A	S	O	N	D
Avg Sale Price	1,537	1,609	2,324	877	948	1,302	1,278	1,385	911	1,317	1,010	1,269	1,440	1,120	1,735	1,041	1,061	1,234	1,222	1,427	1,213	1,289	1,496	1,294	818	1,129	1,133	1,551	1,417	1,246	1,253	1,290	1,086	1,289	1,165	824
3 Mo. Roll Avg			1,823	1,603	1,383	1,042	1,176	1,322	1,192	1,205	1,080	1,199	1,240	1,277	1,432	1,299	1,279	1,112	1,172	1,295	1,287	1,310	1,333	1,360	1,203	1,080	1,026	1,271	1,367	1,405	1,305	1,263	1,210	1,222	1,180	1,093

Based on information from Midwest Real Estate Data LLC for the period 1/1/2009 through 12/31/2011. Due to MLS reporting methods and allowable reporting policy, this data is only informational and may not be completely accurate. Therefore, Coldwell Banker Residential Brokerage does not guarantee the data accuracy. Data maintained by the MLS's may not reflect all real estate activity in the market.

