

MLS Area: Winnetka



ART WILSON
 Broker, Realtor
 847-363-1599
 Art.Wilson@cbexchange.com



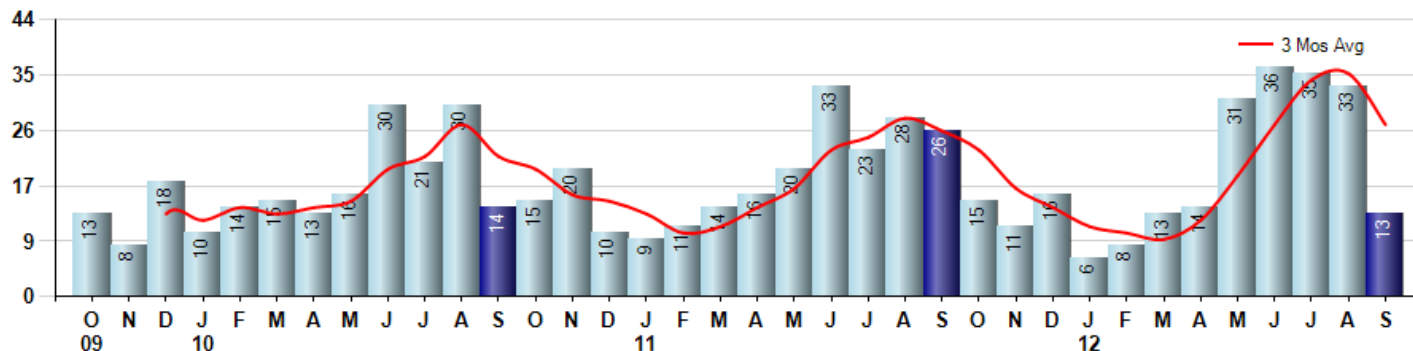
Price Range: ALL | Properties: Single Family Home, Townhome, Condo

Market Profile & Trends Overview	Month	Trending Versus*:				YTD	Trending Versus*:	
		LM	L3M	PYM	LY		PriorYTD	PriorYear
Median List Price of all Current Listings	\$1,424,000	↑		↑				
Average List Price of all Current Listings	\$1,975,332	↓		↑				
September Median Sales Price	\$970,000	↑	↓	↓	↔	\$1,017,500	↑	↑
September Average Sales Price	\$965,346	↓	↓	↓	↓	\$1,166,833	↓	↓
Total Properties Currently for Sale (Inventory)	145	↑		↓				
September Number of Properties Sold	13	↓		↓		189	↑	
September Average Days on Market (Solds)	50	↓	↓	↓	↓	110	↓	
September Month's Supply of Inventory	11.2	↑	↑	↑	↑	10.8	↓	↔
September Sale Price vs List Price Ratio	92.6%	↓	↓	↓	↑	92.2%	↓	↑

* LM=Last Month / L3M=Last 3 Months / PYM=Same Month Prior Year / LY=Last Year / YTD = Year-to-date

Property Sales

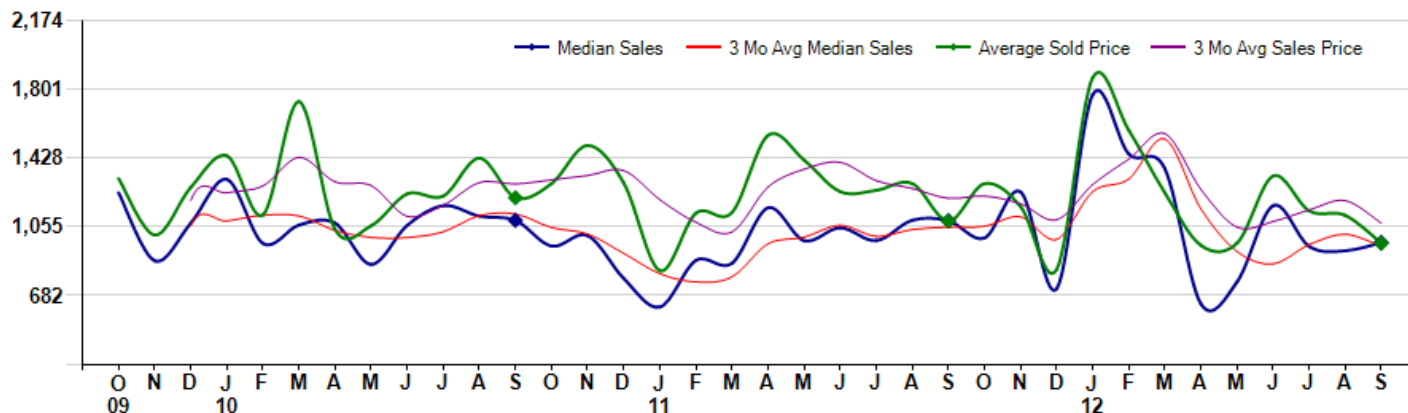
September Property sales were 13, down -50.0% from 26 in September of 2011 and -60.6% lower than the 33 sales last month. September 2012 sales were at their lowest level compared to September of 2011 and 2010. September YTD sales of 189 are running 5.0% ahead of last year's year-to-date sales of 180.



Prices

The Median Sales Price in September was \$970,000, down -10.9% from \$1,088,375 in September of 2011 and up 4.9% from \$925,000 last month. The Average Sales Price in September was \$965,346, down -11.1% from \$1,085,842 in September of 2011 and down -13.6% from \$1,117,568 last month. September 2012 ASP was at the lowest level compared to September of 2011 and 2010.

Median means Middle (the same # of properties sold above and below Median) (000's)



Based on information from Midwest Real Estate Data LLC for the period 10/1/2009 through 9/30/2012. Due to MLS reporting methods and allowable reporting policy, this data is only informational and may not be completely accurate. Therefore, Coldwell Banker Residential Brokerage does not guarantee the data accuracy. Data maintained by the MLS's may not reflect all real estate activity in the market.



MLS Area: Winnetka



ART WILSON
 Broker, Realtor
 847-363-1599
 Art.Wilson@cbexchange.com



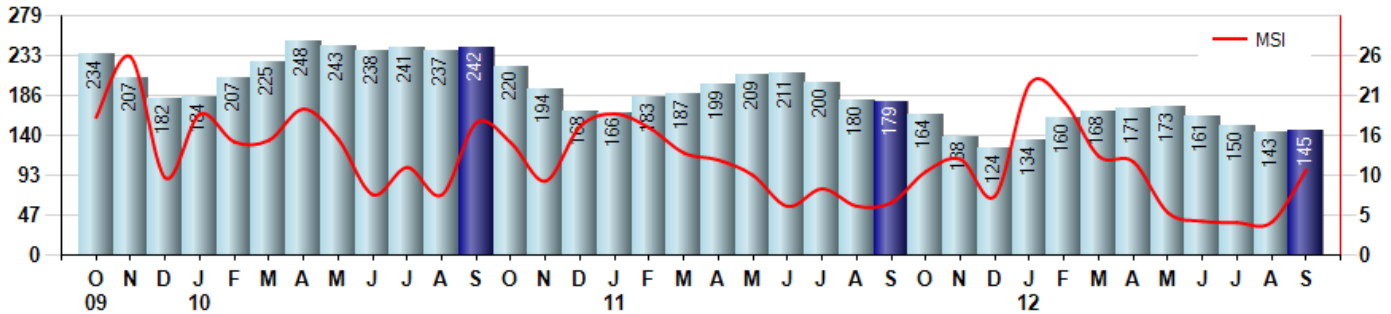
Price Range: ALL | Properties: Single Family Home, Townhome, Condo

Inventory & MSI

The Total Inventory of Properties available for sale as of September was 145, up 1.4% from 143 last month and down -19.0% from 179 in September of last year. September 2012 Inventory was at the lowest level compared to September of 2011 and 2010.

A comparatively lower MSI is more beneficial for sellers while a higher MSI is better for buyers. The September 2012 MSI of 11.2 months was at a mid range compared with September of 2011 and 2010.

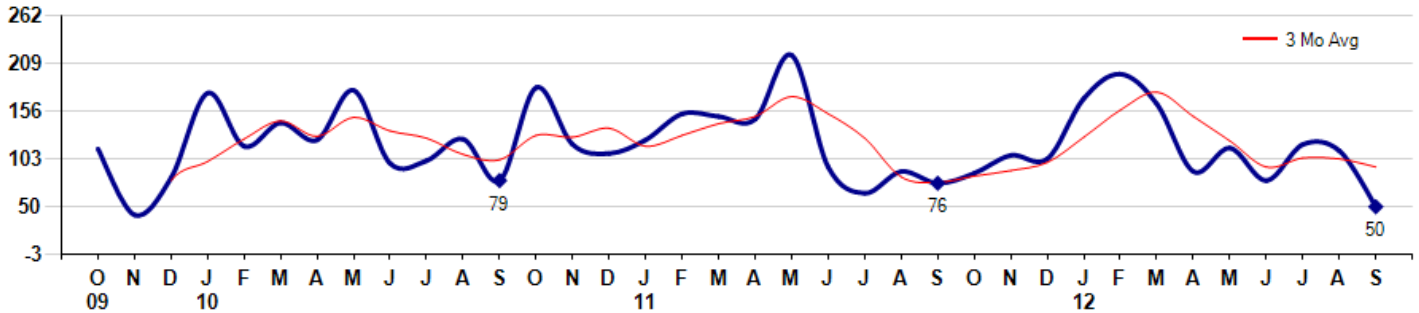
MSI is the # of months needed to sell all of the Inventory at the monthly Sales Pace



Market Time

The average Days On Market(DOM) shows how many days the average Property is on the Market before it sells. An upward trend in DOM tends to indicate a move towards more of a Buyer's market, a downward trend a move towards more of a Seller's market. The DOM for September was 50, down -55.4% from 112 days last month and down -34.2% from 76 days in September of last year. The September 2012 DOM was at its lowest level compared with September of 2011 and 2010.

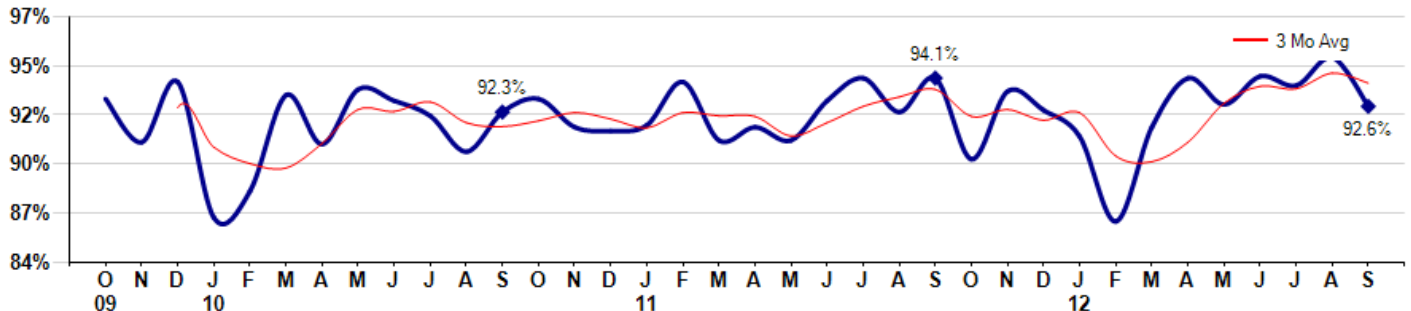
Average Days on Market(Listing to Contract) for properties sold during the month



Selling Price vs Listing Price

The Selling Price vs Listing Price reveals the average amount that Sellers are agreeing to come down from their list price. The lower the ratio is below 100% the more of a Buyer's market exists, a ratio at or above 100% indicates more of a Seller's market. The September 2012 Selling Price vs List Price of 92.6% was down from 95.2% last month and down from 94.1% in September of last year.

Avg Selling Price divided by Avg Listing Price for sold properties during the month



Based on information from Midwest Real Estate Data LLC for the period 10/1/2009 through 9/30/2012. Due to MLS reporting methods and allowable reporting policy, this data is only informational and may not be completely accurate. Therefore, Coldwell Banker Residential Brokerage does not guarantee the data accuracy. Data maintained by the MLS's may not reflect all real estate activity in the market.



MLS Area: Winnetka



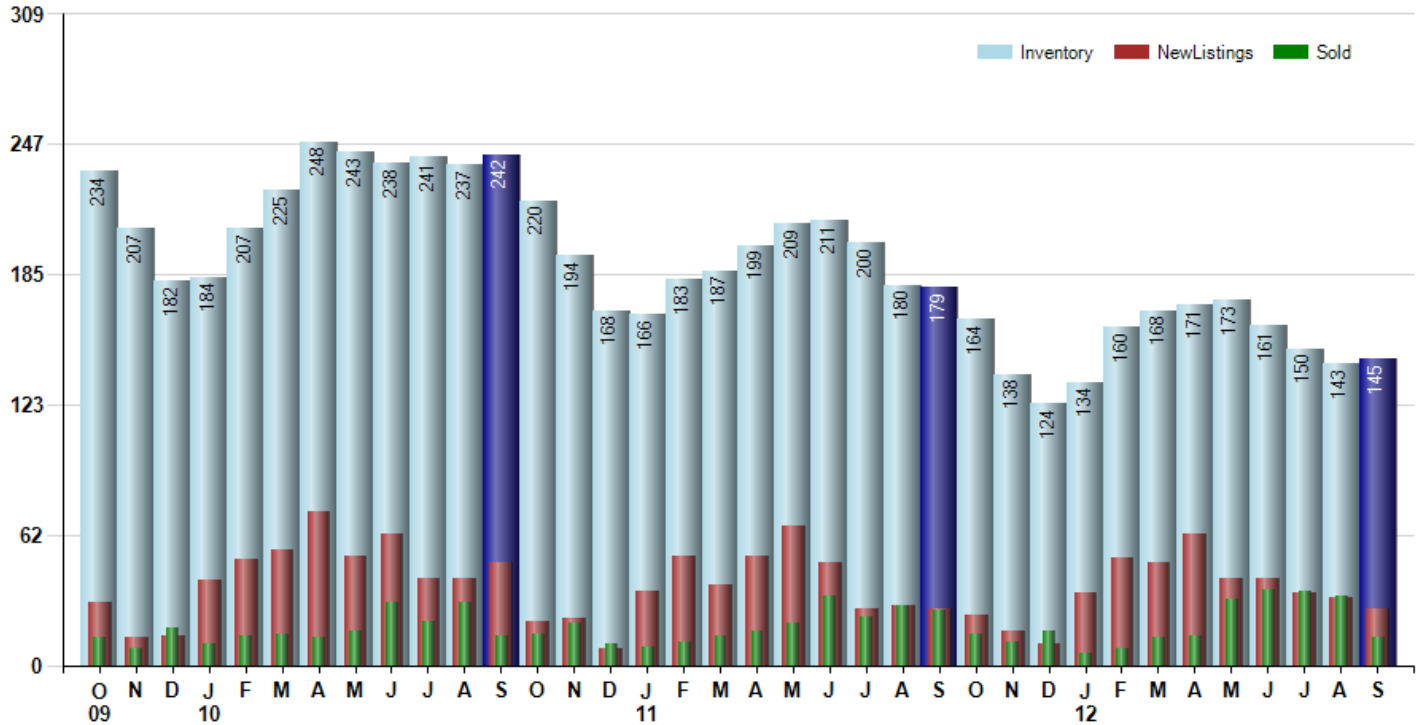
ART WILSON
 Broker, Realtor
 847-363-1599
 Art.Wilson@cbexchange.com



Price Range: ALL | Properties: Single Family Home, Townhome, Condo

Inventory / New Listings / Sales

This last view of the market combines monthly inventory of Properties for sale along with New Listings and Sales. The graph shows the basic annual seasonality of the market as well as the relationship between these items. The number of New Listings in September 2012 was 27, down -15.6% from 32 last month and equal to 27 in September of last year.



Based on information from Midwest Real Estate Data LLC for the period 10/1/2009 through 9/30/2012. Due to MLS reporting methods and allowable reporting policy, this data is only informational and may not be completely accurate. Therefore, Coldwell Banker Residential Brokerage does not guarantee the data accuracy. Data maintained by the MLS's may not reflect all real estate activity in the market.



MARKET ACTION REPORT

September 2012

MLS Area: Winnetka



ART WILSON
 Broker, Realtor
 847-363-1599
 Art.Wilson@cbexchange.com



Price Range: ALL | Properties: Single Family Home, Townhome, Condo

	O 09	N	D	J 10	F	M	A	M	J	J	A	S	O	N	D	J 11	F	M	A	M	J	J	A	S	O	N	D	J 12	F	M	A	M	J	J	A	S
Homes Sold	13	8	18	10	14	15	13	16	30	21	30	14	15	20	10	9	11	14	16	20	33	23	28	26	15	11	16	6	8	13	14	31	36	35	33	13
3 Mo. Roll Avg			13	12	14	13	14	15	20	22	27	22	20	16	15	13	10	11	14	17	23	25	28	26	23	17	14	11	10	9	12	19	27	34	35	27

	(000's) O 09	N	D	J 10	F	M	A	M	J	J	A	S	O	N	D	J 11	F	M	A	M	J	J	A	S	O	N	D	J 12	F	M	A	M	J	J	A	S
Median Sale Price	1,240	871	1,075	1,313	965	1,065	1,075	851	1,064	1,170	1,113	1,090	950	1,008	775	620	873	858	1,159	980	1,050	980	1,091	1,088	995	1,245	720	1,772	1,450	1,370	636	757	1,170	949	925	970
3 Mo. Roll Avg			1,062	1,086	1,118	1,114	1,035	997	997	1,028	1,115	1,124	1,051	1,016	911	801	756	783	963	999	1,063	1,003	1,040	1,053	1,058	1,109	987	1,246	1,314	1,531	1,152	921	854	959	1,015	948

	O 09	N	D	J 10	F	M	A	M	J	J	A	S	O	N	D	J 11	F	M	A	M	J	J	A	S	O	N	D	J 12	F	M	A	M	J	J	A	S
Inventory	234	207	182	184	207	225	248	243	238	241	237	242	220	194	168	166	183	187	199	209	211	200	180	179	164	138	124	134	160	168	171	173	161	150	143	145
MSI	18	26	10	18	15	15	19	15	8	11	8	17	15	10	17	18	17	13	12	10	6	9	6	7	11	13	8	22	20	13	12	6	4	4	4	11

	O 09	N	D	J 10	F	M	A	M	J	J	A	S	O	N	D	J 11	F	M	A	M	J	J	A	S	O	N	D	J 12	F	M	A	M	J	J	A	S
Days On Market	114	41	82	176	117	143	124	179	98	101	125	79	182	119	109	124	153	150	147	218	94	65	89	76	87	107	103	170	197	164	89	115	79	119	112	50
3 Mo. Roll Avg			79	100	125	145	128	149	134	126	108	102	129	127	137	117	129	142	150	172	153	126	83	77	84	90	99	127	157	177	150	123	94	104	103	94

	O 09	N	D	J 10	F	M	A	M	J	J	A	S	O	N	D	J 11	F	M	A	M	J	J	A	S	O	N	D	J 12	F	M	A	M	J	J	A	S
Price per Sq Ft	384	483	343	195	245	416	218	365	282	323	321	339	282	332	242	204	278	263	341	306	358	307	329	337	296	331	276	420	330	289	272	281	325	324	285	243
3 Mo. Roll Avg			403	340	261	285	293	333	288	323	309	328	314	318	285	259	241	248	294	303	335	324	331	324	321	321	301	342	342	346	297	281	293	310	311	284

	O 09	N	D	J 10	F	M	A	M	J	J	A	S	O	N	D	J 11	F	M	A	M	J	J	A	S	O	N	D	J 12	F	M	A	M	J	J	A	S
Sale to List Price	0.930	0.907	0.939	0.867	0.881	0.932	0.906	0.935	0.929	0.921	0.902	0.923	0.930	0.915	0.913	0.916	0.939	0.908	0.915	0.908	0.929	0.941	0.923	0.941	0.898	0.934	0.924	0.910	0.865	0.915	0.941	0.927	0.942	0.937	0.952	0.926
3 Mo. Roll Avg			0.925	0.904	0.896	0.893	0.906	0.924	0.923	0.928	0.917	0.915	0.918	0.923	0.919	0.915	0.923	0.921	0.921	0.910	0.917	0.926	0.931	0.935	0.921	0.924	0.919	0.923	0.900	0.897	0.907	0.928	0.937	0.935	0.944	0.938

	O 09	N	D	J 10	F	M	A	M	J	J	A	S	O	N	D	J 11	F	M	A	M	J	J	A	S	O	N	D	J 12	F	M	A	M	J	J	A	S
New Listings	30	13	14	40	50	55	73	52	62	41	41	49	21	22	8	35	52	38	52	66	49	27	28	27	24	16	10	34	51	49	62	41	41	34	32	27
Inventory	234	207	182	184	207	225	248	243	238	241	237	242	220	194	168	166	183	187	199	209	211	200	180	179	164	138	124	134	160	168	171	173	161	150	143	145
Sales	13	8	18	10	14	15	13	16	30	21	30	14	15	20	10	9	11	14	16	20	33	23	28	26	15	11	16	6	8	13	14	31	36	35	33	13

	(000's) O 09	N	D	J 10	F	M	A	M	J	J	A	S	O	N	D	J 11	F	M	A	M	J	J	A	S	O	N	D	J 12	F	M	A	M	J	J	A	S
Avg Sale Price	1,317	1,010	1,269	1,440	1,120	1,735	1,041	1,061	1,234	1,222	1,427	1,213	1,289	1,496	1,294	818	1,129	1,133	1,551	1,417	1,246	1,253	1,290	1,086	1,289	1,165	824	1,863	1,579	1,239	954	966	1,331	1,142	1,118	965
3 Mo. Roll Avg			1,199	1,240	1,277	1,432	1,299	1,279	1,112	1,172	1,295	1,287	1,310	1,333	1,360	1,203	1,080	1,026	1,271	1,367	1,405	1,305	1,263	1,210	1,222	1,180	1,093	1,284	1,422	1,560	1,257	1,053	1,084	1,146	1,197	1,075

Based on information from Midwest Real Estate Data LLC for the period 10/1/2009 through 9/30/2012. Due to MLS reporting methods and allowable reporting policy, this data is only informational and may not be completely accurate. Therefore, Coldwell Banker Residential Brokerage does not guarantee the data accuracy. Data maintained by the MLS's may not reflect all real estate activity in the market.

