

MLS Area: Highland Park



ART WILSON
 Broker, Realtor
 847-363-1599
 Art.Wilson@cbexchange.com



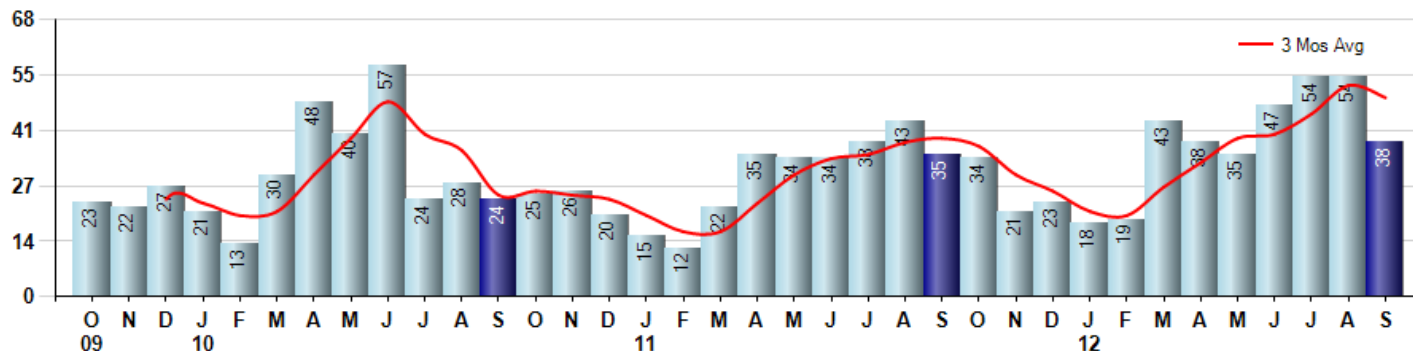
Price Range: ALL | Properties: Single Family Home, Townhome, Condo

Market Profile & Trends Overview	Month	Trending Versus*:				YTD	Trending Versus*:	
		LM	L3M	PYM	LY		PriorYTD	PriorYear
Median List Price of all Current Listings	\$572,000	↑		↑				
Average List Price of all Current Listings	\$1,000,777	↑		↑				
September Median Sales Price	\$422,500	↓	↓	↓	↔	\$422,500	↓	↔
September Average Sales Price	\$535,211	↓	↓	↑	↑	\$499,945	↓	↓
Total Properties Currently for Sale (Inventory)	264	↓		↓				
September Number of Properties Sold	38	↓		↑		346	↑	
September Average Days on Market (Solds)	95	↑	↓	↓	↓	107	↓	↓
September Month's Supply of Inventory	6.9	↑	↑	↓	↓	9.2	↓	↓
September Sale Price vs List Price Ratio	94.0%	↓	↑	↑	↑	91.9%	↑	↑

* LM=Last Month / L3M=Last 3 Months / PYM=Same Month Prior Year / LY=Last Year / YTD = Year-to-date

Property Sales

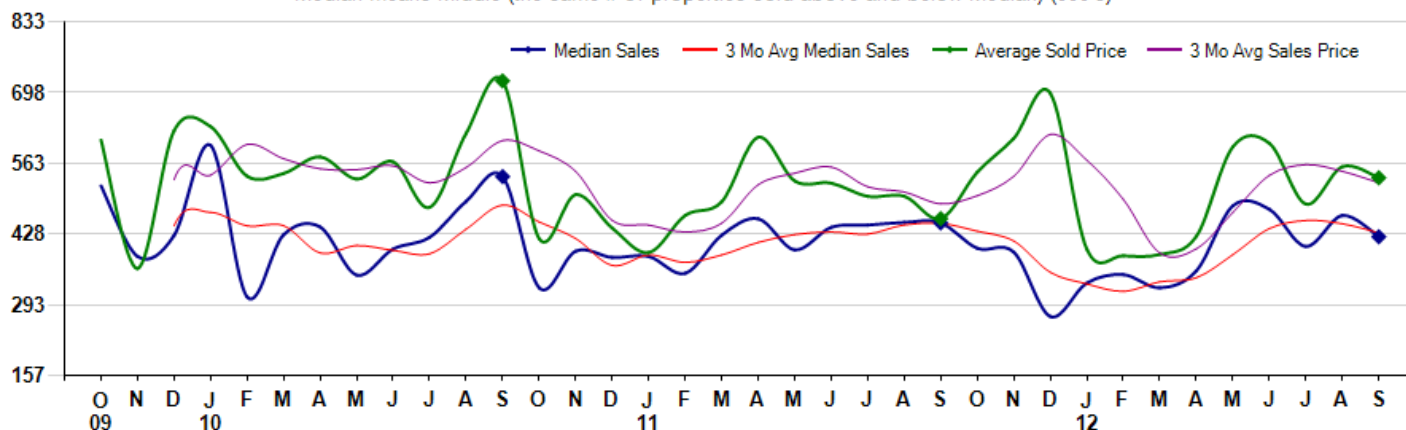
September Property sales were 38, up 8.6% from 35 in September of 2011 and -29.6% lower than the 54 sales last month. September 2012 sales were at their highest level compared to September of 2011 and 2010. September YTD sales of 346 are running 29.1% ahead of last year's year-to-date sales of 268.



Prices

The Median Sales Price in September was \$422,500, down -5.9% from \$449,000 in September of 2011 and down -8.8% from \$463,250 last month. The Average Sales Price in September was \$535,211, up 17.1% from \$457,165 in September of 2011 and down -3.8% from \$556,605 last month. September 2012 ASP was at a mid range compared to September of 2011 and 2010.

Median means Middle (the same # of properties sold above and below Median) (000's)



Based on information from Midwest Real Estate Data LLC for the period 10/1/2009 through 9/30/2012. Due to MLS reporting methods and allowable reporting policy, this data is only informational and may not be completely accurate. Therefore, Coldwell Banker Residential Brokerage does not guarantee the data accuracy. Data maintained by the MLS's may not reflect all real estate activity in the market.



MLS Area: Highland Park



ART WILSON
 Broker, Realtor
 847-363-1599
 Art.Wilson@cbexchange.com



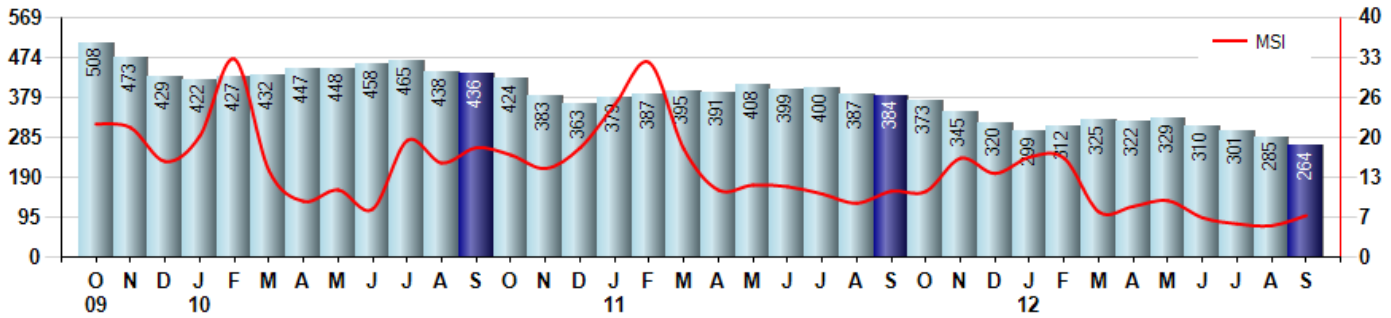
Price Range: ALL | Properties: Single Family Home, Townhome, Condo

Inventory & MSI

The Total Inventory of Properties available for sale as of September was 264, down -7.4% from 285 last month and down -31.3% from 384 in September of last year. September 2012 Inventory was at the lowest level compared to September of 2011 and 2010.

A comparatively lower MSI is more beneficial for sellers while a higher MSI is better for buyers. The September 2012 MSI of 6.9 months was at its lowest level compared with September of 2011 and 2010.

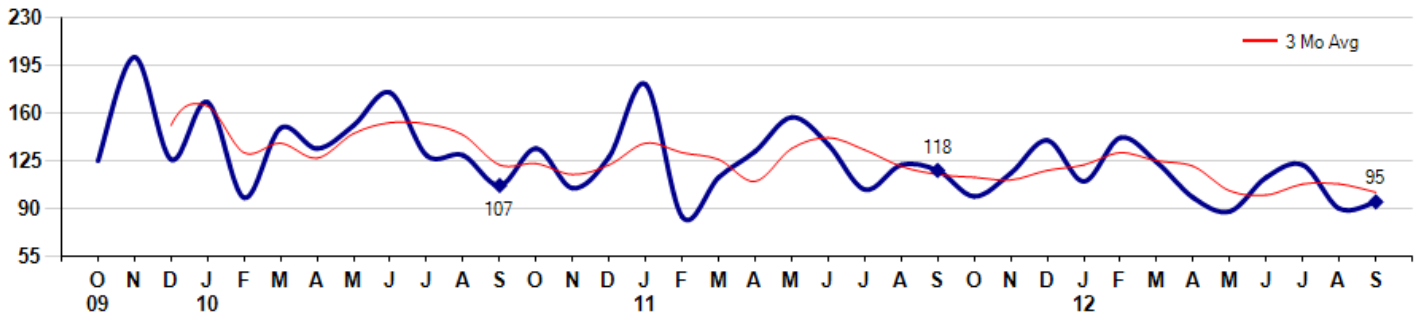
MSI is the # of months needed to sell all of the Inventory at the monthly Sales Pace



Market Time

The average Days On Market (DOM) shows how many days the average Property is on the Market before it sells. An upward trend in DOM tends to indicate a move towards more of a Buyer's market, a downward trend a move towards more of a Seller's market. The DOM for September was 95, up 5.6% from 90 days last month and down -19.5% from 118 days in September of last year. The September 2012 DOM was at its lowest level compared with September of 2011 and 2010.

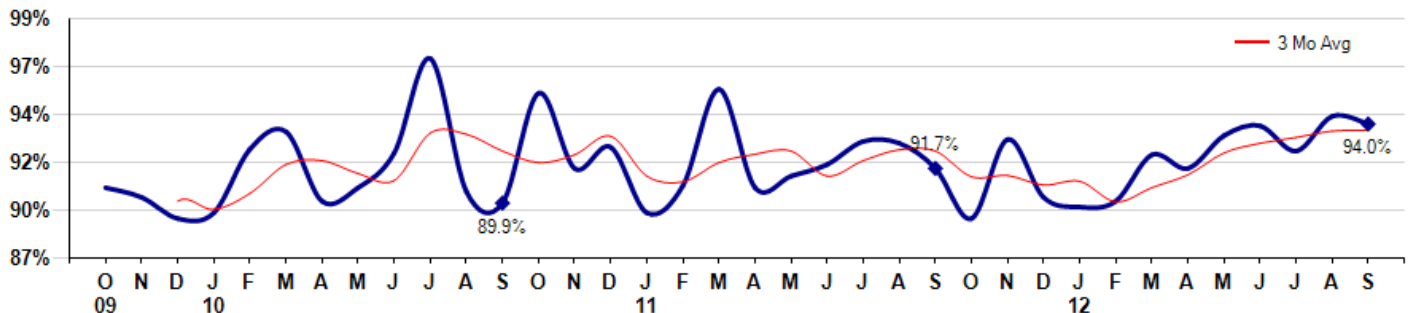
Average Days on Market (Listing to Contract) for properties sold during the month



Selling Price vs Listing Price

The Selling Price vs Listing Price reveals the average amount that Sellers are agreeing to come down from their list price. The lower the ratio is below 100% the more of a Buyer's market exists, a ratio at or above 100% indicates more of a Seller's market. The September 2012 Selling Price vs List Price of 94.0% was down from 94.4% last month and up from 91.7% in September of last year.

Avg Selling Price divided by Avg Listing Price for sold properties during the month



Based on information from Midwest Real Estate Data LLC for the period 10/1/2009 through 9/30/2012. Due to MLS reporting methods and allowable reporting policy, this data is only informational and may not be completely accurate. Therefore, Coldwell Banker Residential Brokerage does not guarantee the data accuracy. Data maintained by the MLS's may not reflect all real estate activity in the market.



MLS Area: Highland Park



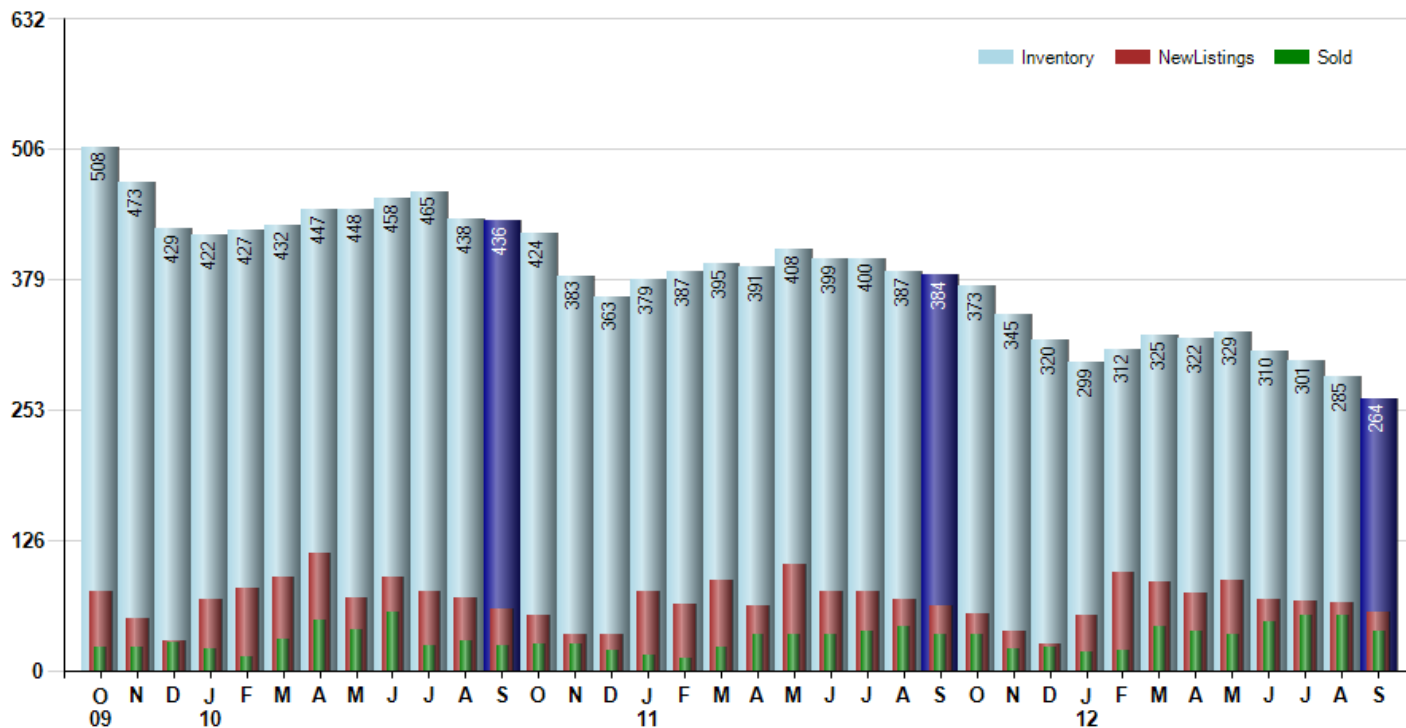
ART WILSON
 Broker, Realtor
 847-363-1599
 Art.Wilson@cbexchange.com



Price Range: ALL | Properties: Single Family Home, Townhome, Condo

Inventory / New Listings / Sales

This last view of the market combines monthly inventory of Properties for sale along with New Listings and Sales. The graph shows the basic annual seasonality of the market as well as the relationship between these items. The number of New Listings in September 2012 was 56, down -13.8% from 65 last month and down -9.7% from 62 in September of last year.



Based on information from Midwest Real Estate Data LLC for the period 10/1/2009 through 9/30/2012. Due to MLS reporting methods and allowable reporting policy, this data is only informational and may not be completely accurate. Therefore, Coldwell Banker Residential Brokerage does not guarantee the data accuracy. Data maintained by the MLS's may not reflect all real estate activity in the market.



MARKET ACTION REPORT

September 2012

MLS Area: Highland Park



ART WILSON
 Broker, Realtor
 847-363-1599
 Art.Wilson@cbexchange.com



Price Range: ALL | Properties: Single Family Home, Townhome, Condo

	O 09	N	D	J 10	F	M	A	M	J	J	A	S	O	N	D	J 11	F	M	A	M	J	J	A	S	O	N	D	J 12	F	M	A	M	J	J	A	S
Homes Sold	23	22	27	21	13	30	48	40	57	24	28	24	25	26	20	15	12	22	35	34	34	38	43	35	34	21	23	18	19	43	38	35	47	54	54	38
3 Mo. Roll Avg			24	23	20	21	30	39	48	40	36	25	26	25	24	20	16	16	23	30	34	35	38	39	37	30	26	21	20	27	33	39	40	45	52	49

	(000's) O 09	N	D	J 10	F	M	A	M	J	J	A	S	O	N	D	J 11	F	M	A	M	J	J	A	S	O	N	D	J 12	F	M	A	M	J	J	A	S
Median Sale Price	520	385	425	598	308	426	441	349	399	422	490	538	325	395	383	385	353	426	457	398	441	445	450	449	401	393	270	334	350	325	358	482	475	404	463	423
3 Mo. Roll Avg			443	469	443	444	392	406	397	390	437	483	451	419	368	388	374	388	412	427	432	428	445	448	433	414	355	332	318	336	344	388	438	454	447	430

	O 09	N	D	J 10	F	M	A	M	J	J	A	S	O	N	D	J 11	F	M	A	M	J	J	A	S	O	N	D	J 12	F	M	A	M	J	J	A	S
Inventory	508	473	429	422	427	432	447	448	458	465	438	436	424	383	363	379	387	395	391	408	399	400	387	384	373	345	320	299	312	325	322	329	310	301	285	264
MSI	22	22	16	20	33	14	9	11	8	19	16	18	17	15	18	25	32	18	11	12	12	11	9	11	11	16	14	17	16	8	8	9	7	6	5	7

	O 09	N	D	J 10	F	M	A	M	J	J	A	S	O	N	D	J 11	F	M	A	M	J	J	A	S	O	N	D	J 12	F	M	A	M	J	J	A	S
Days On Market	125	201	126	168	98	149	134	151	175	129	129	107	134	105	128	181	84	113	132	157	137	104	122	118	99	116	140	110	142	124	98	88	113	122	90	95
3 Mo. Roll Avg			151	165	131	138	127	145	153	152	144	122	123	115	122	138	131	126	110	134	142	133	121	115	113	111	118	122	131	125	121	103	100	108	108	102

	O 09	N	D	J 10	F	M	A	M	J	J	A	S	O	N	D	J 11	F	M	A	M	J	J	A	S	O	N	D	J 12	F	M	A	M	J	J	A	S
Price per Sq Ft	184	173	193	194	224	189	198	175	171	202	187	210	159	158	158	157	180	169	189	182	185	181	159	169	170	187	182	189	147	146	174	184	193	172	179	191
3 Mo. Roll Avg			183	187	204	202	204	187	181	183	187	200	185	176	158	158	165	169	179	180	185	183	175	170	166	175	180	186	173	161	156	168	184	183	181	181

	O 09	N	D	J 10	F	M	A	M	J	J	A	S	O	N	D	J 11	F	M	A	M	J	J	A	S	O	N	D	J 12	F	M	A	M	J	J	A	S
Sale to List Price	0.907	0.902	0.891	0.894	0.927	0.936	0.900	0.907	0.925	0.974	0.905	0.899	0.956	0.917	0.928	0.894	0.908	0.958	0.907	0.913	0.919	0.931	0.930	0.917	0.891	0.932	0.902	0.897	0.900	0.924	0.917	0.934	0.939	0.926	0.944	0.940
3 Mo. Roll Avg			0.900	0.896	0.904	0.919	0.921	0.914	0.911	0.935	0.935	0.926	0.920	0.924	0.934	0.913	0.910	0.920	0.924	0.926	0.913	0.921	0.927	0.926	0.913	0.913	0.908	0.910	0.900	0.907	0.914	0.925	0.930	0.933	0.936	0.937

	O 09	N	D	J 10	F	M	A	M	J	J	A	S	O	N	D	J 11	F	M	A	M	J	J	A	S	O	N	D	J 12	F	M	A	M	J	J	A	S
New Listings	76	50	29	69	80	91	113	70	90	77	71	59	53	35	34	76	64	88	63	102	77	76	69	62	55	38	25	54	95	85	75	88	68	67	65	56
Inventory	508	473	429	422	427	432	447	448	458	465	438	436	424	383	363	379	387	395	391	408	399	400	387	384	373	345	320	299	312	325	322	329	310	301	285	264
Sales	23	22	27	21	13	30	48	40	57	24	28	24	25	26	20	15	12	22	35	34	34	38	43	35	34	21	23	18	19	43	38	35	47	54	54	38

	(000's) O 09	N	D	J 10	F	M	A	M	J	J	A	S	O	N	D	J 11	F	M	A	M	J	J	A	S	O	N	D	J 12	F	M	A	M	J	J	A	S
Avg Sale Price	608	362	625	633	538	543	575	533	566	479	620	721	419	503	439	392	463	489	613	529	525	500	500	457	546	611	697	399	386	389	423	595	601	485	557	535
3 Mo. Roll Avg			532	540	599	572	552	551	558	526	555	606	587	548	454	445	432	448	522	544	556	518	508	486	501	538	618	569	494	391	399	469	540	560	548	526

Based on information from Midwest Real Estate Data LLC for the period 10/1/2009 through 9/30/2012. Due to MLS reporting methods and allowable reporting policy, this data is only informational and may not be completely accurate. Therefore, Coldwell Banker Residential Brokerage does not guarantee the data accuracy. Data maintained by the MLS's may not reflect all real estate activity in the market.

