

## MLS Area: Winnetka



**ART WILSON**  
 Broker, Realtor  
 847-363-1599  
 Art.Wilson@cbexchange.com



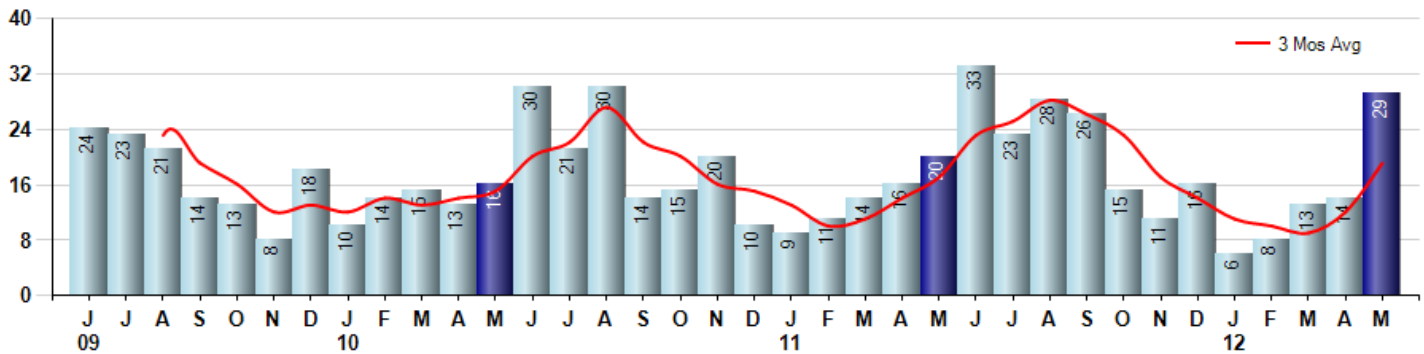
Price Range: ALL | Properties: Single Family Home, Townhome, Condo

Market Profile & Trends Overview	Month	Trending Versus*:				YTD	Trending Versus*:	
		LM	L3M	PYM	LY		PriorYTD	PriorYear
Median List Price of all Current Listings	\$1,425,000	↑		↑				
Average List Price of all Current Listings	\$1,853,647	↑		↑				
May Median Sales Price	\$817,000	↑	↓	↓	↓	\$942,500	↑	↓
May Average Sales Price	\$1,011,931	↑	↓	↓	↓	\$1,180,375	↓	↓
Total Properties Currently for Sale (Inventory)	162	↓		↓				
May Number of Properties Sold	29	↑		↑		70	↔	
May Average Days on Market (Solds)	106	↑	↓	↓	↓	129	↓	↑
May Month's Supply of Inventory	5.6	↓	↓	↓	↓	14.5	↑	↑
May Sale Price vs List Price Ratio	93.4%	↓	↑	↑	↑	90.7%	↓	↓

\* LM=Last Month / L3M=Last 3 Months / PYM=Same Month Prior Year / LY=Last Year / YTD = Year-to-date

### Property Sales

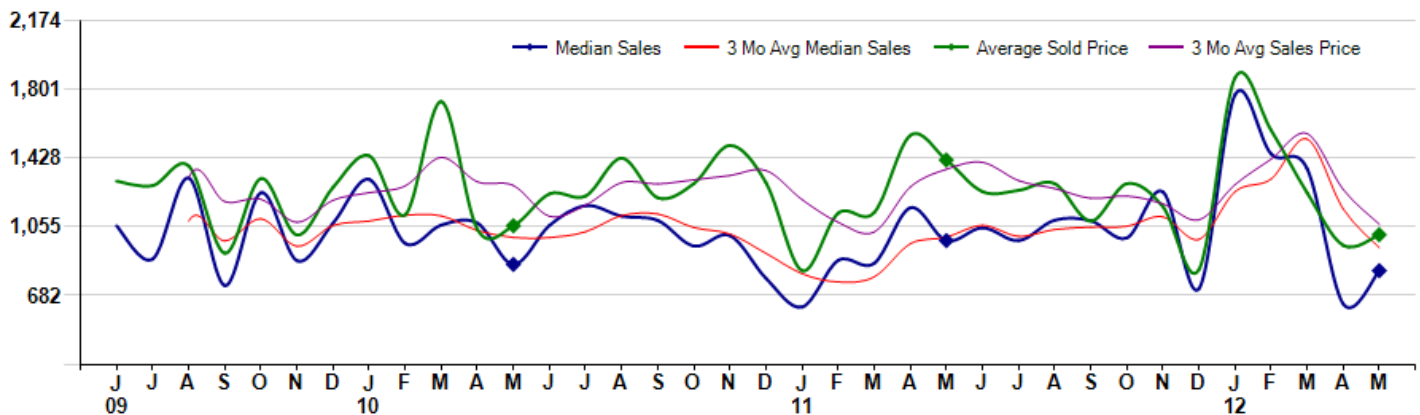
May Property sales were 29, up 45.0% from 20 in May of 2011 and 107.1% higher than the 14 sales last month. May 2012 sales were at their highest level compared to May of 2011 and 2010. May YTD sales of 70 are running equal to last year's year-to-date sales of 70.



### Prices

The Median Sales Price in May was \$817,000, down -16.6% from \$980,000 in May of 2011 and up 28.4% from \$636,375 last month. The Average Sales Price in May was \$1,011,931, down -28.6% from \$1,417,400 in May of 2011 and up 6.0% from \$954,368 last month. May 2012 ASP was at the lowest level compared to May of 2011 and 2010.

Median means Middle (the same # of properties sold above and below Median) (000's)



Based on information from Midwest Real Estate Data LLC for the period 6/1/2009 through 5/31/2012. Due to MLS reporting methods and allowable reporting policy, this data is only informational and may not be completely accurate. Therefore, Coldwell Banker Residential Brokerage does not guarantee the data accuracy. Data maintained by the MLS's may not reflect all real estate activity in the market.



## MLS Area: Winnetka



**ART WILSON**  
 Broker, Realtor  
 847-363-1599  
 Art.Wilson@cbexchange.com



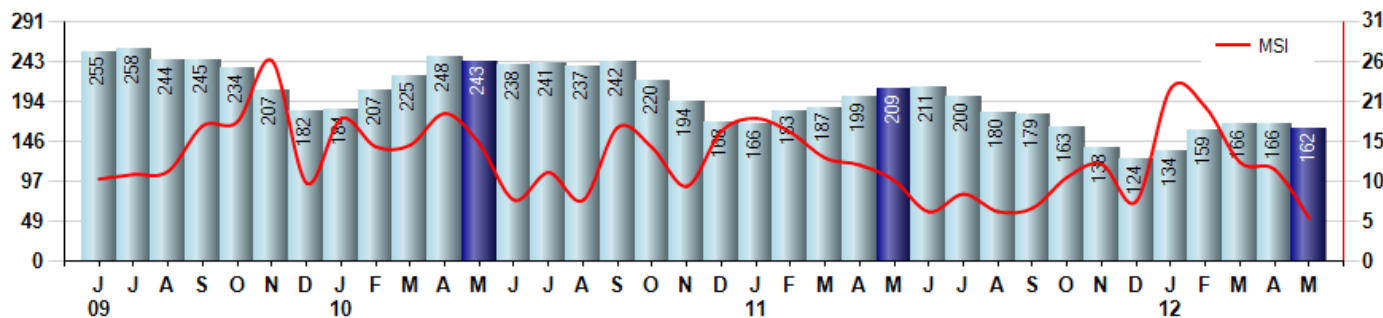
Price Range: ALL | Properties: Single Family Home, Townhome, Condo

### Inventory & MSI

The Total Inventory of Properties available for sale as of May was 162, down -2.4% from 166 last month and down -22.5% from 209 in May of last year. May 2012 Inventory was at the lowest level compared to May of 2011 and 2010.

A comparatively lower MSI is more beneficial for sellers while a higher MSI is better for buyers. The May 2012 MSI of 5.6 months was at its lowest level compared with May of 2011 and 2010.

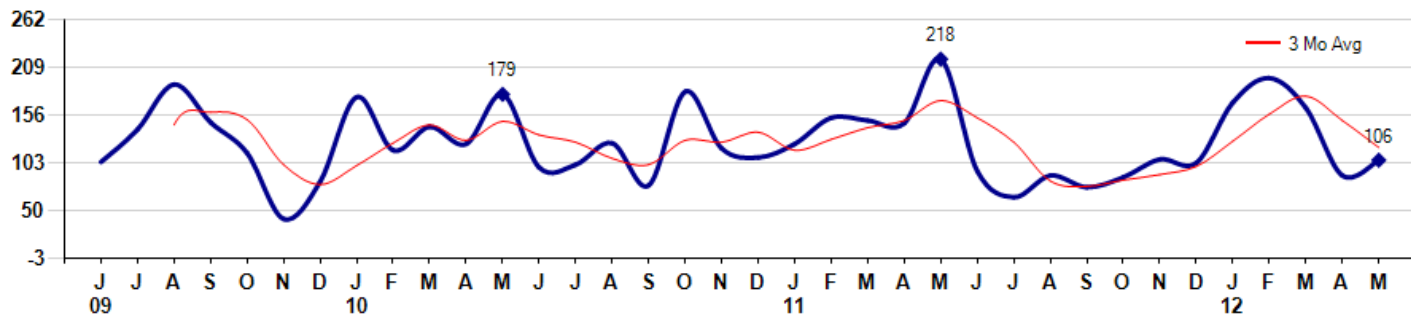
MSI is the # of months needed to sell all of the Inventory at the monthly Sales Pace



### Market Time

The average Days On Market (DOM) shows how many days the average Property is on the Market before it sells. An upward trend in DOM tends to indicate a move towards more of a Buyer's market, a downward trend a move towards more of a Seller's market. The DOM for May was 106, up 19.1% from 89 days last month and down -51.4% from 218 days in May of last year. The May 2012 DOM was at its lowest level compared with May of 2011 and 2010.

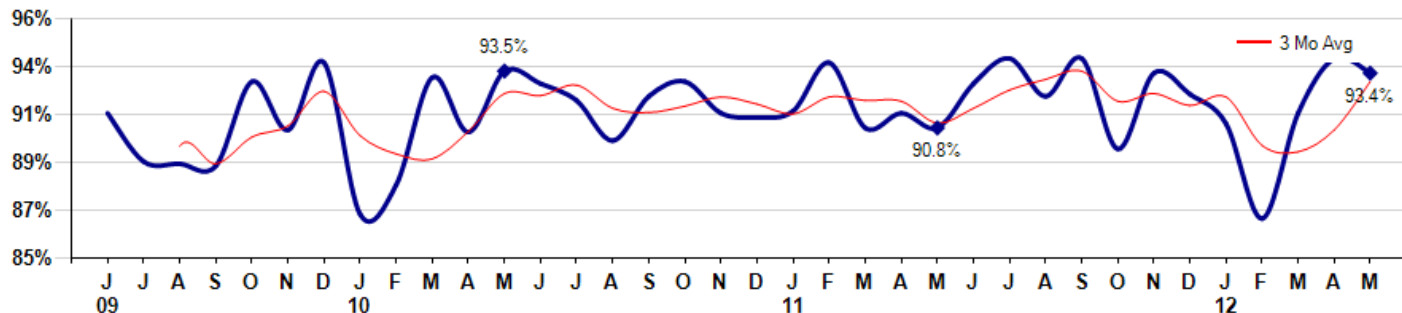
Average Days on Market (Listing to Contract) for properties sold during the month



### Selling Price vs Original Listing Price

The Selling Price vs Original Listing Price reveals the average amount that Sellers are agreeing to come down from their original list price. The lower the ratio is below 100% the more of a Buyer's market exists, a ratio at or above 100% indicates more of a Seller's market. The May 2012 Selling Price vs Original List Price of 93.4% was down from 94.1% last month and up from 90.8% in May of last year.

Avg Selling Price divided by Avg Listing Price for sold properties during the month



Based on information from Midwest Real Estate Data LLC for the period 6/1/2009 through 5/31/2012. Due to MLS reporting methods and allowable reporting policy, this data is only informational and may not be completely accurate. Therefore, Coldwell Banker Residential Brokerage does not guarantee the data accuracy. Data maintained by the MLS's may not reflect all real estate activity in the market.



## MLS Area: Winnetka



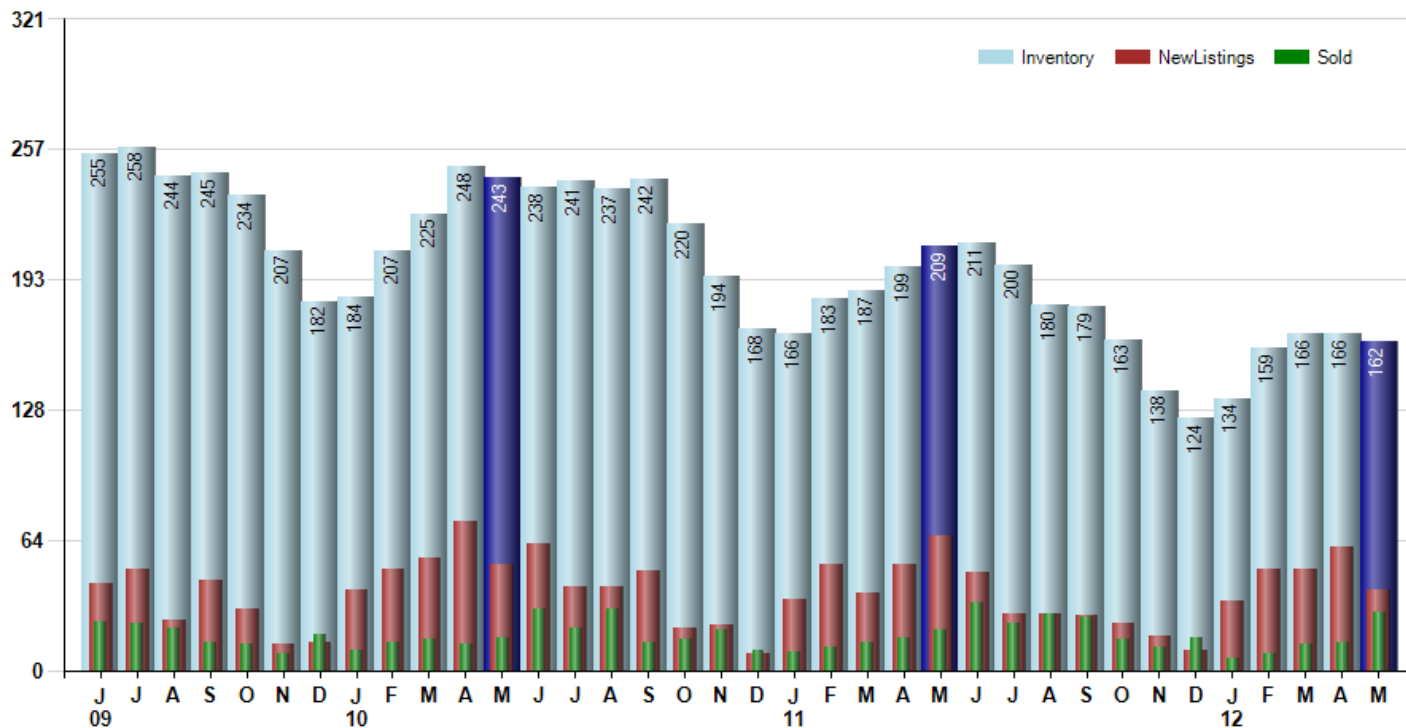
**ART WILSON**  
 Broker, Realtor  
 847-363-1599  
 Art.Wilson@cbexchange.com



Price Range: ALL | Properties: Single Family Home, Townhome, Condo

### Inventory / New Listings / Sales

This last view of the market combines monthly inventory of Properties for sale along with New Listings and Sales. The graph shows the basic annual seasonality of the market as well as the relationship between these items. The number of New Listings in May 2012 was 40, down -34.4% from 61 last month and down -39.4% from 66 in May of last year.



Based on information from Midwest Real Estate Data LLC for the period 6/1/2009 through 5/31/2012. Due to MLS reporting methods and allowable reporting policy, this data is only informational and may not be completely accurate. Therefore, Coldwell Banker Residential Brokerage does not guarantee the data accuracy. Data maintained by the MLS's may not reflect all real estate activity in the market.



# MARKET ACTION REPORT

May 2012

## MLS Area: Winnetka



**ART WILSON**  
 Broker, Realtor  
 847-363-1599  
 Art.Wilson@cbexchange.com



Price Range: ALL | Properties: Single Family Home, Townhome, Condo

	J 09	J	A	S	O	N	D	J 10	F	M	A	M	J	J	A	S	O	N	D	J 11	F	M	A	M	J	J	A	S	O	N	D	J 12	F	M	A	M
Homes Sold	24	23	21	14	13	8	18	10	14	15	13	16	30	21	30	14	15	20	10	9	11	14	16	20	33	23	28	26	15	11	16	6	8	13	14	29
3 Mo. Roll Avg			23	19	16	12	13	12	14	13	14	15	20	22	27	22	20	16	15	13	10	11	14	17	23	25	28	26	23	17	14	11	10	9	12	19

	(000's) J 09	J	A	S	O	N	D	J 10	F	M	A	M	J	J	A	S	O	N	D	J 11	F	M	A	M	J	J	A	S	O	N	D	J 12	F	M	A	M
Median Sale Price	1,060	880	1,320	736	1,240	871	1,075	1,313	965	1,065	1,075	851	1,064	1,170	1,113	1,090	950	1,008	775	620	873	858	1,159	980	1,050	980	1,091	1,088	995	1,245	720	1,772	1,450	1,370	636	817
3 Mo. Roll Avg			1,087	979	1,099	949	1,062	1,086	1,118	1,114	1,035	997	997	1,028	1,115	1,124	1,051	1,016	911	801	756	783	963	999	1,063	1,003	1,040	1,053	1,058	1,109	987	1,246	1,314	1,531	1,152	941

	J 09	J	A	S	O	N	D	J 10	F	M	A	M	J	J	A	S	O	N	D	J 11	F	M	A	M	J	J	A	S	O	N	D	J 12	F	M	A	M
Inventory	255	258	244	245	234	207	182	184	207	225	248	243	238	241	237	242	220	194	168	166	183	187	199	209	211	200	180	179	163	138	124	134	159	166	166	162
MSI	11	11	12	18	18	26	10	18	15	15	19	15	8	11	8	17	15	10	17	18	17	13	12	10	6	9	6	7	11	13	8	22	20	13	12	6

	J 09	J	A	S	O	N	D	J 10	F	M	A	M	J	J	A	S	O	N	D	J 11	F	M	A	M	J	J	A	S	O	N	D	J 12	F	M	A	M
Days On Market	104	140	190	148	114	41	82	176	117	143	124	179	98	101	125	78	182	119	109	124	153	150	147	218	94	65	89	76	87	107	103	170	197	164	89	106
3 Mo. Roll Avg			145	159	151	101	79	100	125	145	128	149	134	126	108	101	128	126	137	117	129	142	150	172	153	126	83	77	84	90	99	127	157	177	150	120

	J 09	J	A	S	O	N	D	J 10	F	M	A	M	J	J	A	S	O	N	D	J 11	F	M	A	M	J	J	A	S	O	N	D	J 12	F	M	A	M
Price per Sq Ft	316	294	362	234	384	483	343	195	245	416	218	365	282	323	321	339	282	332	242	204	278	263	341	306	358	307	329	337	296	331	276	420	330	289	272	293
3 Mo. Roll Avg			324	297	327	367	403	340	261	285	293	333	288	323	309	328	314	318	285	259	241	248	294	303	335	324	331	324	321	321	301	342	342	346	297	285

	J 09	J	A	S	O	N	D	J 10	F	M	A	M	J	J	A	S	O	N	D	J 11	F	M	A	M	J	J	A	S	O	N	D	J 12	F	M	A	M
Sale to List Price	0.915	0.892	0.891	0.890	0.930	0.907	0.939	0.867	0.881	0.932	0.906	0.935	0.929	0.921	0.902	0.923	0.930	0.915	0.913	0.916	0.939	0.908	0.915	0.908	0.929	0.941	0.923	0.941	0.898	0.934	0.924	0.910	0.865	0.915	0.941	0.934
3 Mo. Roll Avg			0.899	0.891	0.904	0.909	0.925	0.904	0.896	0.893	0.906	0.924	0.923	0.928	0.917	0.915	0.918	0.923	0.919	0.915	0.923	0.921	0.921	0.910	0.917	0.926	0.931	0.935	0.921	0.924	0.919	0.923	0.900	0.897	0.907	0.930

	J 09	J	A	S	O	N	D	J 10	F	M	A	M	J	J	A	S	O	N	D	J 11	F	M	A	M	J	J	A	S	O	N	D	J 12	F	M	A	M
New Listings	43	50	25	44	30	13	14	40	50	55	73	52	62	41	41	49	21	22	8	35	52	38	52	66	48	28	28	27	23	17	10	34	50	50	61	40
Inventory	255	258	244	245	234	207	182	184	207	225	248	243	238	241	237	242	220	194	168	166	183	187	199	209	211	200	180	179	163	138	124	134	159	166	166	162
Sales	24	23	21	14	13	8	18	10	14	15	13	16	30	21	30	14	15	20	10	9	11	14	16	20	33	23	28	26	15	11	16	6	8	13	14	29

	(000's) J 09	J	A	S	O	N	D	J 10	F	M	A	M	J	J	A	S	O	N	D	J 11	F	M	A	M	J	J	A	S	O	N	D	J 12	F	M	A	M
Avg Sale Price	1,302	1,278	1,385	911	1,317	1,010	1,269	1,440	1,120	1,735	1,041	1,061	1,234	1,222	1,427	1,213	1,289	1,496	1,294	818	1,129	1,133	1,551	1,417	1,246	1,253	1,290	1,086	1,289	1,165	824	1,863	1,579	1,239	954	1,012
3 Mo. Roll Avg			1,322	1,192	1,205	1,080	1,199	1,240	1,277	1,432	1,299	1,279	1,112	1,172	1,295	1,287	1,310	1,333	1,360	1,203	1,080	1,026	1,271	1,367	1,405	1,305	1,263	1,210	1,222	1,180	1,093	1,284	1,422	1,560	1,257	1,069

Based on information from Midwest Real Estate Data LLC for the period 6/1/2009 through 5/31/2012. Due to MLS reporting methods and allowable reporting policy, this data is only informational and may not be completely accurate. Therefore, Coldwell Banker Residential Brokerage does not guarantee the data accuracy. Data maintained by the MLS's may not reflect all real estate activity in the market.

