

## MLS Area: Glenview Golf



**ART WILSON**  
 Broker, Realtor  
 847-363-1599  
 Art.Wilson@cbexchange.com



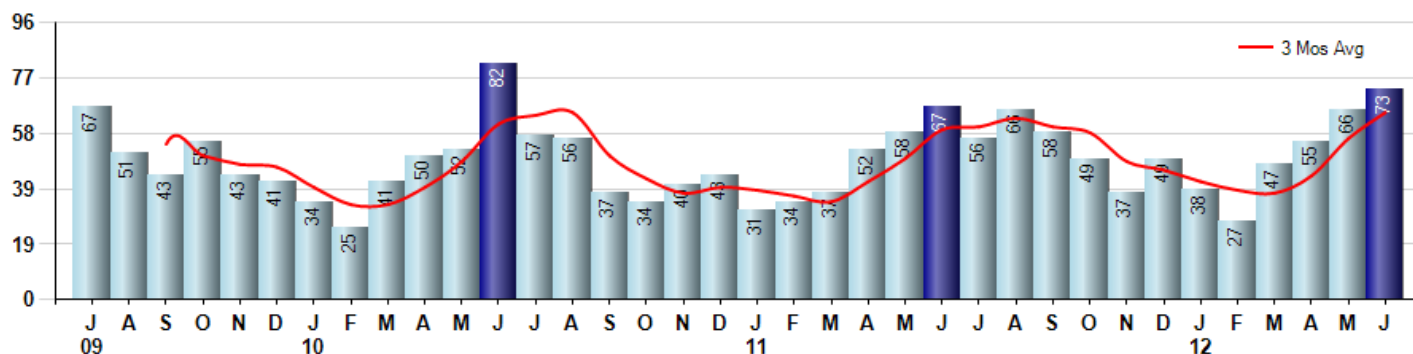
Price Range: ALL | Properties: Single Family Home, Townhome, Condo

Market Profile & Trends Overview	Month	Trending Versus*:				YTD	Trending Versus*:	
		LM	L3M	PYM	LY		PriorYTD	PriorYear
Median List Price of all Current Listings	\$469,000	↑		↑				
Average List Price of all Current Listings	\$561,955	↑		↑				
June Median Sales Price	\$355,000	↑	↑	↓	↓	\$310,000	↓	↓
June Average Sales Price	\$444,754	↑	↑	↓	↓	\$405,599	↓	↓
Total Properties Currently for Sale (Inventory)	347	↓		↓				
June Number of Properties Sold	73	↑		↑		306	↑	
June Average Days on Market (Solds)	89	↑	↓	↓	↓	100	↓	↓
June Month's Supply of Inventory	4.8	↓	↓	↓	↓	8.8	↓	↓
June Sale Price vs List Price Ratio	92.6%	↓	↓	↓	↓	93.1%	↑	↑

\* LM=Last Month / L3M=Last 3 Months / PYM=Same Month Prior Year / LY=Last Year / YTD = Year-to-date

### Property Sales

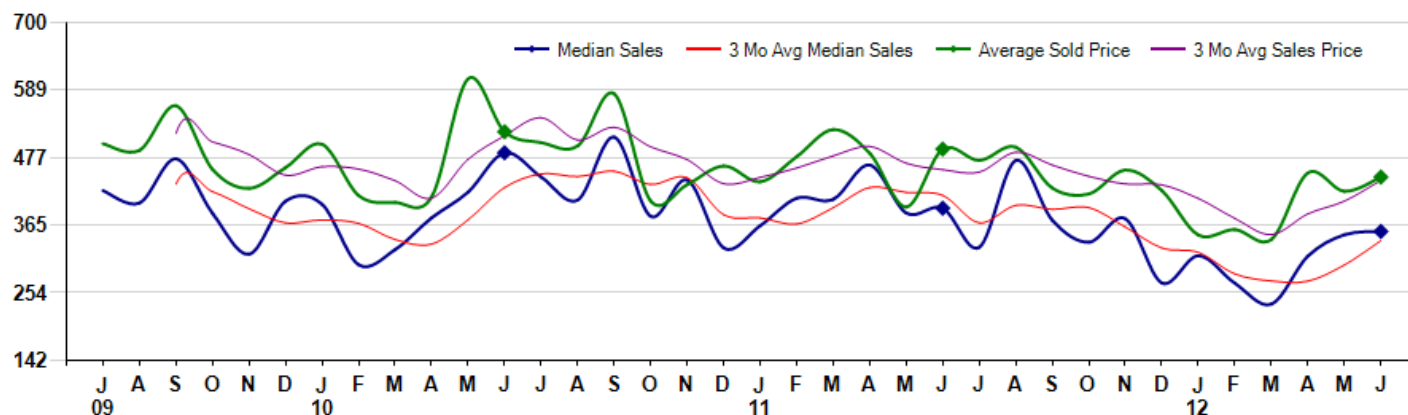
June Property sales were 73, up 9.0% from 67 in June of 2011 and 10.6% higher than the 66 sales last month. June 2012 sales were at a mid level compared to June of 2011 and 2010. June YTD sales of 306 are running 9.7% ahead of last year's year-to-date sales of 279.



### Prices

The Median Sales Price in June was \$355,000, down -9.8% from \$393,403 in June of 2011 and up 1.6% from \$349,500 last month. The Average Sales Price in June was \$444,754, down -9.4% from \$491,125 in June of 2011 and up 5.6% from \$421,215 last month. June 2012 ASP was at the lowest level compared to June of 2011 and 2010.

Median means Middle (the same # of properties sold above and below Median) (000's)



## MLS Area: Glenview Golf



**ART WILSON**  
 Broker, Realtor  
 847-363-1599  
 Art.Wilson@cbexchange.com



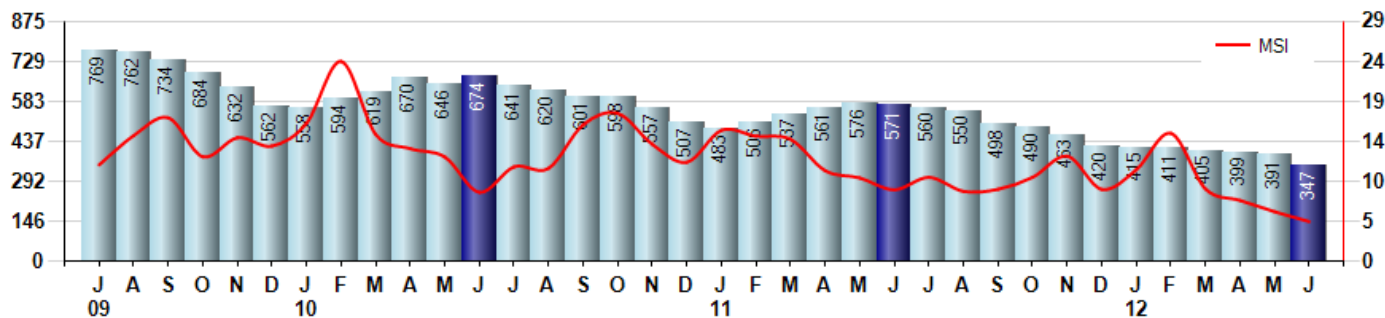
Price Range: ALL | Properties: Single Family Home, Townhome, Condo

### Inventory & MSI

The Total Inventory of Properties available for sale as of June was 347, down -11.3% from 391 last month and down -39.2% from 571 in June of last year. June 2012 Inventory was at the lowest level compared to June of 2011 and 2010.

A comparatively lower MSI is more beneficial for sellers while a higher MSI is better for buyers. The June 2012 MSI of 4.8 months was at its lowest level compared with June of 2011 and 2010.

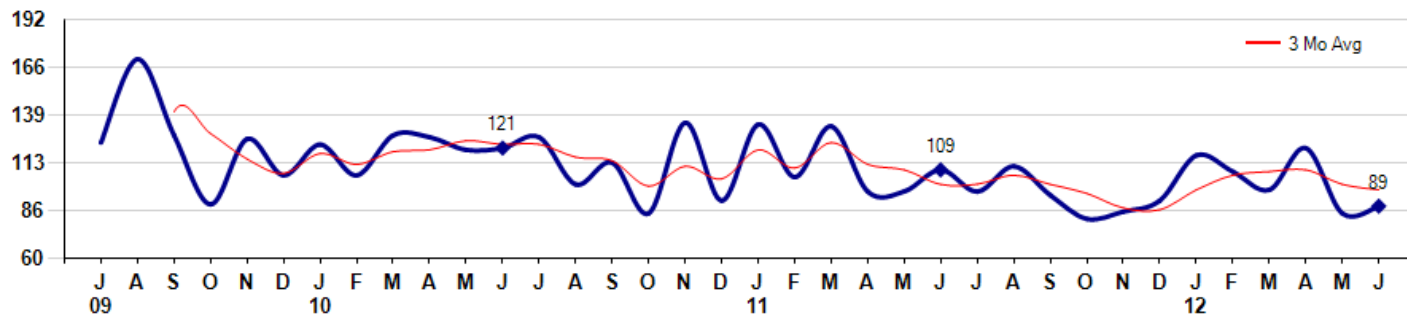
MSI is the # of months needed to sell all of the Inventory at the monthly Sales Pace



### Market Time

The average Days On Market(DOM) shows how many days the average Property is on the Market before it sells. An upward trend in DOM tends to indicate a move towards more of a Buyer's market, a downward trend a move towards more of a Seller's market. The DOM for June was 89, up 4.7% from 85 days last month and down -18.3% from 109 days in June of last year. The June 2012 DOM was at its lowest level compared with June of 2011 and 2010.

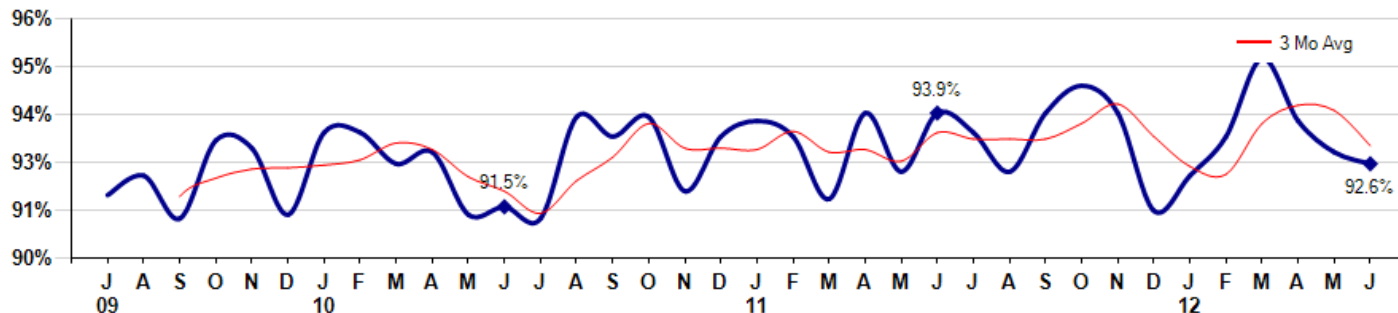
Average Days on Market(Listing to Contract) for properties sold during the month



### Selling Price vs Listing Price

The Selling Price vs Listing Price reveals the average amount that Sellers are agreeing to come down from their list price. The lower the ratio is below 100% the more of a Buyer's market exists, a ratio at or above 100% indicates more of a Seller's market. The June 2012 Selling Price vs List Price of 92.6% was down from 92.9% last month and down from 93.9% in June of last year.

Avg Selling Price divided by Avg Listing Price for sold properties during the month



Based on information from Midwest Real Estate Data LLC for the period 7/1/2009 through 6/30/2012. Due to MLS reporting methods and allowable reporting policy, this data is only informational and may not be completely accurate. Therefore, Coldwell Banker Residential Brokerage does not guarantee the data accuracy. Data maintained by the MLS's may not reflect all real estate activity in the market.



## MLS Area: Glenview Golf



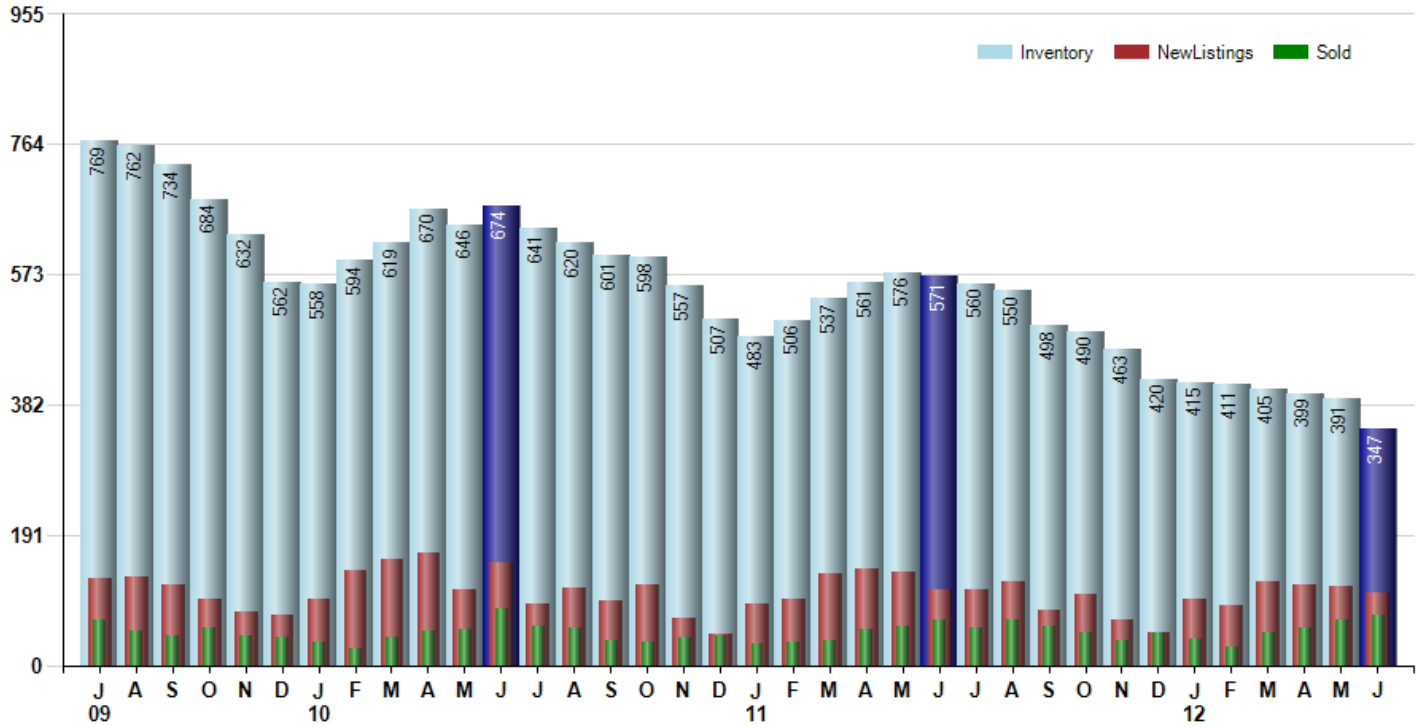
**ART WILSON**  
 Broker, Realtor  
 847-363-1599  
 Art.Wilson@cbexchange.com



Price Range: ALL | Properties: Single Family Home, Townhome, Condo

### Inventory / New Listings / Sales

This last view of the market combines monthly inventory of Properties for sale along with New Listings and Sales. The graph shows the basic annual seasonality of the market as well as the relationship between these items. The number of New Listings in June 2012 was 107, down -7.8% from 116 last month and down -4.5% from 112 in June of last year.



Based on information from Midwest Real Estate Data LLC for the period 7/1/2009 through 6/30/2012. Due to MLS reporting methods and allowable reporting policy, this data is only informational and may not be completely accurate. Therefore, Coldwell Banker Residential Brokerage does not guarantee the data accuracy. Data maintained by the MLS's may not reflect all real estate activity in the market.



# MARKET ACTION REPORT

June 2012

## MLS Area: Glenview Golf



**ART WILSON**  
 Broker, Realtor  
 847-363-1599  
 Art.Wilson@cbexchange.com



Price Range: ALL | Properties: Single Family Home, Townhome, Condo

	J 09	A	S	O	N	D	J 10	F	M	A	M	J	J	A	S	O	N	D	J 11	F	M	A	M	J	J	A	S	O	N	D	J 12	F	M	A	M	J
Homes Sold	67	51	43	55	43	41	34	25	41	50	52	82	57	56	37	34	40	43	31	34	37	52	58	67	56	66	58	49	37	49	38	27	47	55	66	73
3 Mo. Roll Avg			54	50	47	46	39	33	33	39	48	61	64	65	50	42	37	39	38	36	34	41	49	59	60	63	60	58	48	45	41	38	37	43	56	65

	(000's) J 09	A	S	O	N	D	J 10	F	M	A	M	J	J	A	S	O	N	D	J 11	F	M	A	M	J	J	A	S	O	N	D	J 12	F	M	A	M	J
Median Sale Price	423	402	475	385	318	405	400	300	325	378	420	485	445	407	511	380	440	328	365	410	408	465	386	393	329	472	374	337	376	270	315	270	235	314	350	355
3 Mo. Roll Avg			433	421	393	369	374	368	342	334	374	428	450	446	454	433	444	383	377	367	394	428	419	415	369	398	392	394	362	328	320	285	273	273	300	340

	J 09	A	S	O	N	D	J 10	F	M	A	M	J	J	A	S	O	N	D	J 11	F	M	A	M	J	J	A	S	O	N	D	J 12	F	M	A	M	J
Inventory	769	762	734	684	632	562	558	594	619	670	646	674	641	620	601	598	557	507	483	506	537	561	576	571	560	550	498	490	463	420	415	411	405	399	391	347
MSI	11	15	17	12	15	14	16	24	15	13	12	8	11	11	16	18	14	12	16	15	15	11	10	9	10	8	9	10	13	9	11	15	9	7	6	5

	J 09	A	S	O	N	D	J 10	F	M	A	M	J	J	A	S	O	N	D	J 11	F	M	A	M	J	J	A	S	O	N	D	J 12	F	M	A	M	J
Days On Market	124	170	128	90	126	106	123	106	128	127	120	121	127	101	113	85	135	92	134	105	133	97	97	109	97	111	95	82	86	92	117	108	98	121	85	89
3 Mo. Roll Avg			141	129	115	107	118	112	119	120	125	123	123	116	114	100	111	104	120	110	124	112	109	101	101	106	101	96	88	87	98	106	108	109	101	98

	J 09	A	S	O	N	D	J 10	F	M	A	M	J	J	A	S	O	N	D	J 11	F	M	A	M	J	J	A	S	O	N	D	J 12	F	M	A	M	J
Price per Sq Ft	196	189	201	200	189	194	245	209	283	202	176	191	217	192	176	140	177	191	174	175	204	180	170	208	180	190	178	198	184	173	175	152	158	159	180	183
3 Mo. Roll Avg			195	197	197	194	209	216	246	231	220	190	195	200	195	169	164	169	181	180	184	186	185	186	186	193	183	189	187	185	177	167	162	156	166	174

	J 09	A	S	O	N	D	J 10	F	M	A	M	J	J	A	S	O	N	D	J 11	F	M	A	M	J	J	A	S	O	N	D	J 12	F	M	A	M	J
Sale to List Price	0.918	0.923	0.912	0.932	0.930	0.913	0.934	0.934	0.926	0.929	0.913	0.915	0.912	0.938	0.933	0.938	0.919	0.933	0.937	0.933	0.917	0.939	0.924	0.939	0.934	0.924	0.939	0.946	0.939	0.914	0.923	0.933	0.953	0.937	0.929	0.926
3 Mo. Roll Avg			0.918	0.922	0.925	0.925	0.926	0.927	0.931	0.930	0.923	0.919	0.913	0.922	0.928	0.936	0.930	0.930	0.930	0.934	0.929	0.930	0.927	0.934	0.932	0.932	0.932	0.936	0.941	0.933	0.925	0.923	0.936	0.941	0.940	0.931

	J 09	A	S	O	N	D	J 10	F	M	A	M	J	J	A	S	O	N	D	J 11	F	M	A	M	J	J	A	S	O	N	D	J 12	F	M	A	M	J
New Listings	127	129	118	98	79	73	98	138	155	165	110	150	91	113	94	119	69	46	89	98	135	141	137	112	111	122	80	103	66	48	98	88	123	119	116	107
Inventory	769	762	734	684	632	562	558	594	619	670	646	674	641	620	601	598	557	507	483	506	537	561	576	571	560	550	498	490	463	420	415	411	405	399	391	347
Sales	67	51	43	55	43	41	34	25	41	50	52	82	57	56	37	34	40	43	31	34	37	52	58	67	56	66	58	49	37	49	38	27	47	55	66	73

	(000's) J 09	A	S	O	N	D	J 10	F	M	A	M	J	J	A	S	O	N	D	J 11	F	M	A	M	J	J	A	S	O	N	D	J 12	F	M	A	M	J
Avg Sale Price	500	489	563	458	426	460	499	414	403	412	607	520	502	496	583	406	432	463	437	479	523	484	396	491	472	494	427	417	457	423	349	358	342	452	421	445
3 Mo. Roll Avg			517	503	482	448	462	458	439	410	474	513	543	506	527	495	474	434	444	460	480	495	468	457	453	486	465	446	433	432	409	377	350	384	405	439

Based on information from Midwest Real Estate Data LLC for the period 7/1/2009 through 6/30/2012. Due to MLS reporting methods and allowable reporting policy, this data is only informational and may not be completely accurate. Therefore, Coldwell Banker Residential Brokerage does not guarantee the data accuracy. Data maintained by the MLS's may not reflect all real estate activity in the market.

