

MLS Area: Evanston



ART WILSON
 Broker, Realtor
 847-363-1599
 Art.Wilson@cbexchange.com



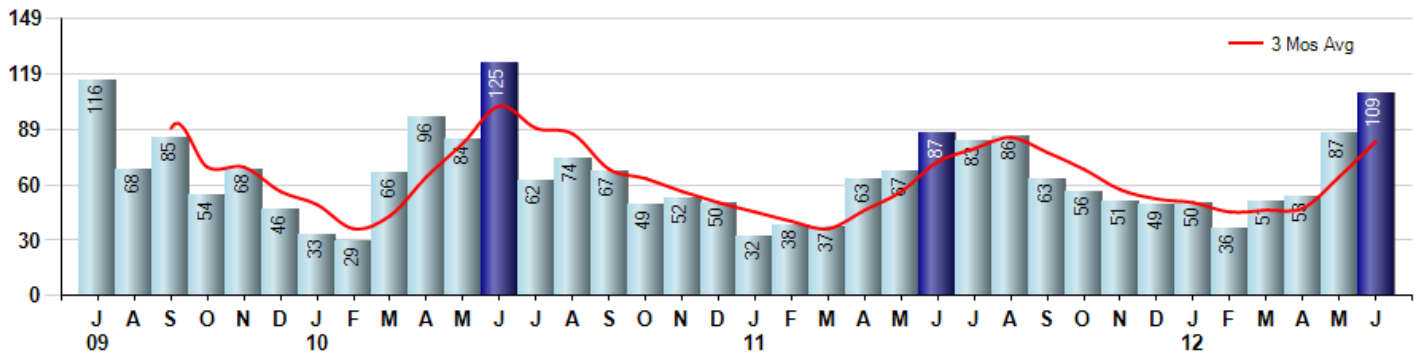
Price Range: ALL | Properties: Single Family Home, Townhome, Condo

Market Profile & Trends Overview	Month	Trending Versus*:				YTD	Trending Versus*:	
		LM	L3M	PYM	LY		PriorYTD	PriorYear
Median List Price of all Current Listings	\$260,450	↓		↑				
Average List Price of all Current Listings	\$407,708	↔		↑				
June Median Sales Price	\$310,000	↑	↑	↓	↑	\$273,000	↓	↓
June Average Sales Price	\$377,469	↑	↑	↓	↑	\$371,433	↔	↑
Total Properties Currently for Sale (Inventory)	414	↓		↓				
June Number of Properties Sold	109	↑		↑		386	↑	
June Average Days on Market (Solds)	87	↓	↓	↓	↓	103	↑	↑
June Month's Supply of Inventory	3.8	↓	↓	↓	↓	8.5	↓	↓
June Sale Price vs List Price Ratio	95.4%	↑	↑	↑	↑	94.3%	↔	↑

* LM=Last Month / L3M=Last 3 Months / PYM=Same Month Prior Year / LY=Last Year / YTD = Year-to-date

Property Sales

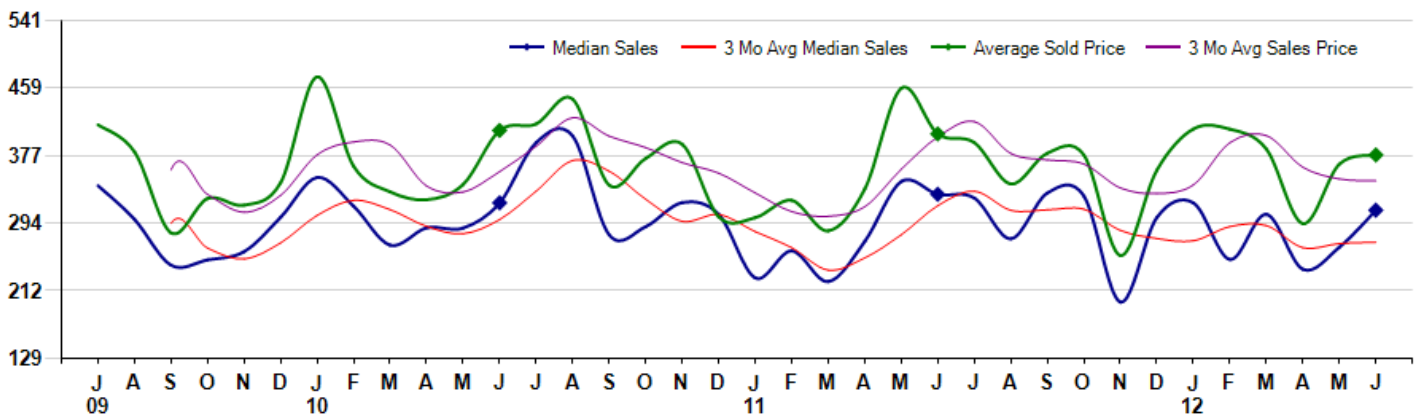
June Property sales were 109, up 25.3% from 87 in June of 2011 and 25.3% higher than the 87 sales last month. June 2012 sales were at a mid level compared to June of 2011 and 2010. June YTD sales of 386 are running 19.1% ahead of last year's year-to-date sales of 324.



Prices

The Median Sales Price in June was \$310,000, down -5.9% from \$329,500 in June of 2011 and up 17.0% from \$265,000 last month. The Average Sales Price in June was \$377,469, down -6.3% from \$403,036 in June of 2011 and up 3.1% from \$366,239 last month. June 2012 ASP was at the lowest level compared to June of 2011 and 2010.

Median means Middle (the same # of properties sold above and below Median) (000's)



MLS Area: Evanston



ART WILSON
 Broker, Realtor
 847-363-1599
 Art.Wilson@cbexchange.com



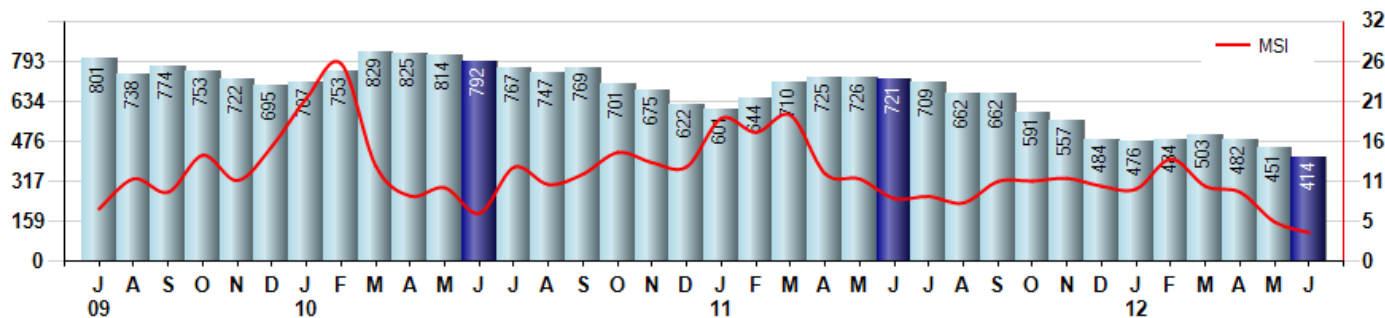
Price Range: ALL | Properties: Single Family Home, Townhome, Condo

Inventory & MSI

The Total Inventory of Properties available for sale as of June was 414, down -8.2% from 451 last month and down -42.6% from 721 in June of last year. June 2012 Inventory was at the lowest level compared to June of 2011 and 2010.

A comparatively lower MSI is more beneficial for sellers while a higher MSI is better for buyers. The June 2012 MSI of 3.8 months was at its lowest level compared with June of 2011 and 2010.

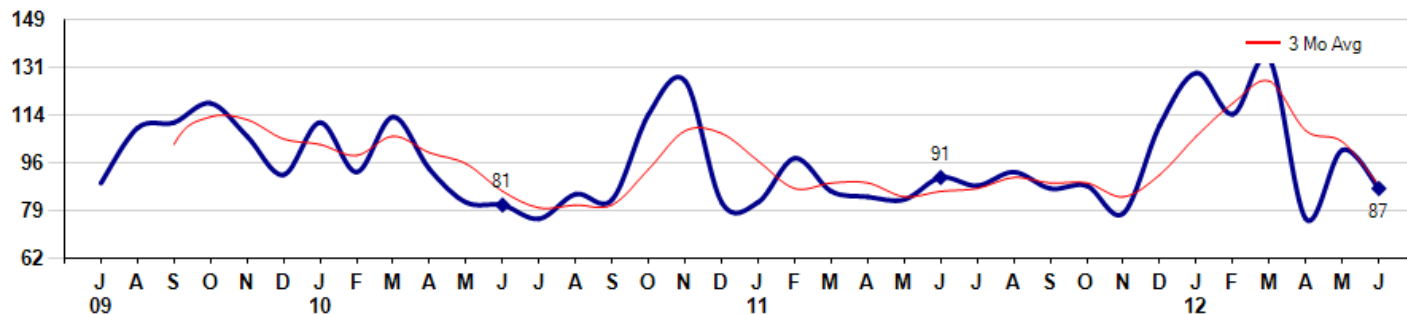
MSI is the # of months needed to sell all of the Inventory at the monthly Sales Pace



Market Time

The average Days On Market (DOM) shows how many days the average Property is on the Market before it sells. An upward trend in DOM tends to indicate a move towards more of a Buyer's market, a downward trend a move towards more of a Seller's market. The DOM for June was 87, down -13.9% from 101 days last month and down -4.4% from 91 days in June of last year. The June 2012 DOM was at a mid range compared with June of 2011 and 2010.

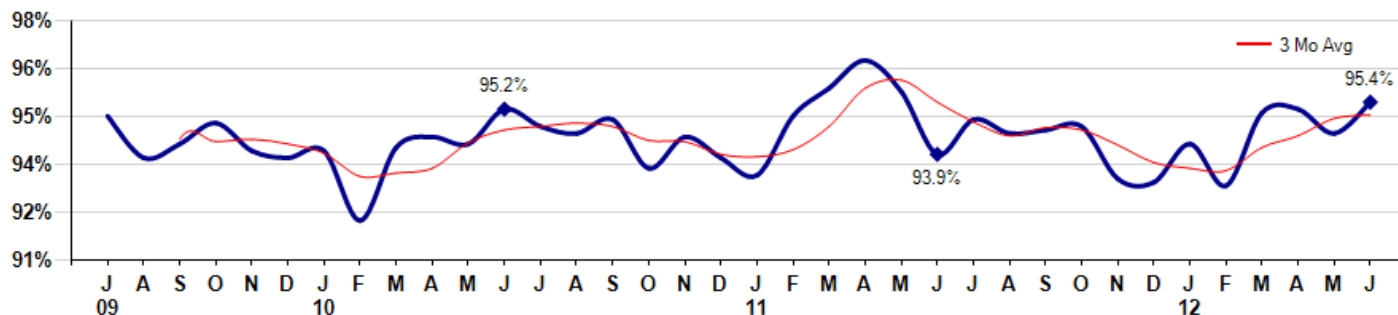
Average Days on Market (Listing to Contract) for properties sold during the month



Selling Price vs Listing Price

The Selling Price vs Listing Price reveals the average amount that Sellers are agreeing to come down from their list price. The lower the ratio is below 100% the more of a Buyer's market exists, a ratio at or above 100% indicates more of a Seller's market. The June 2012 Selling Price vs List Price of 95.4% was up from 94.5% last month and up from 93.9% in June of last year.

Avg Selling Price divided by Avg Listing Price for sold properties during the month



Based on information from Midwest Real Estate Data LLC for the period 7/1/2009 through 6/30/2012. Due to MLS reporting methods and allowable reporting policy, this data is only informational and may not be completely accurate. Therefore, Coldwell Banker Residential Brokerage does not guarantee the data accuracy. Data maintained by the MLS's may not reflect all real estate activity in the market.



MLS Area: Evanston



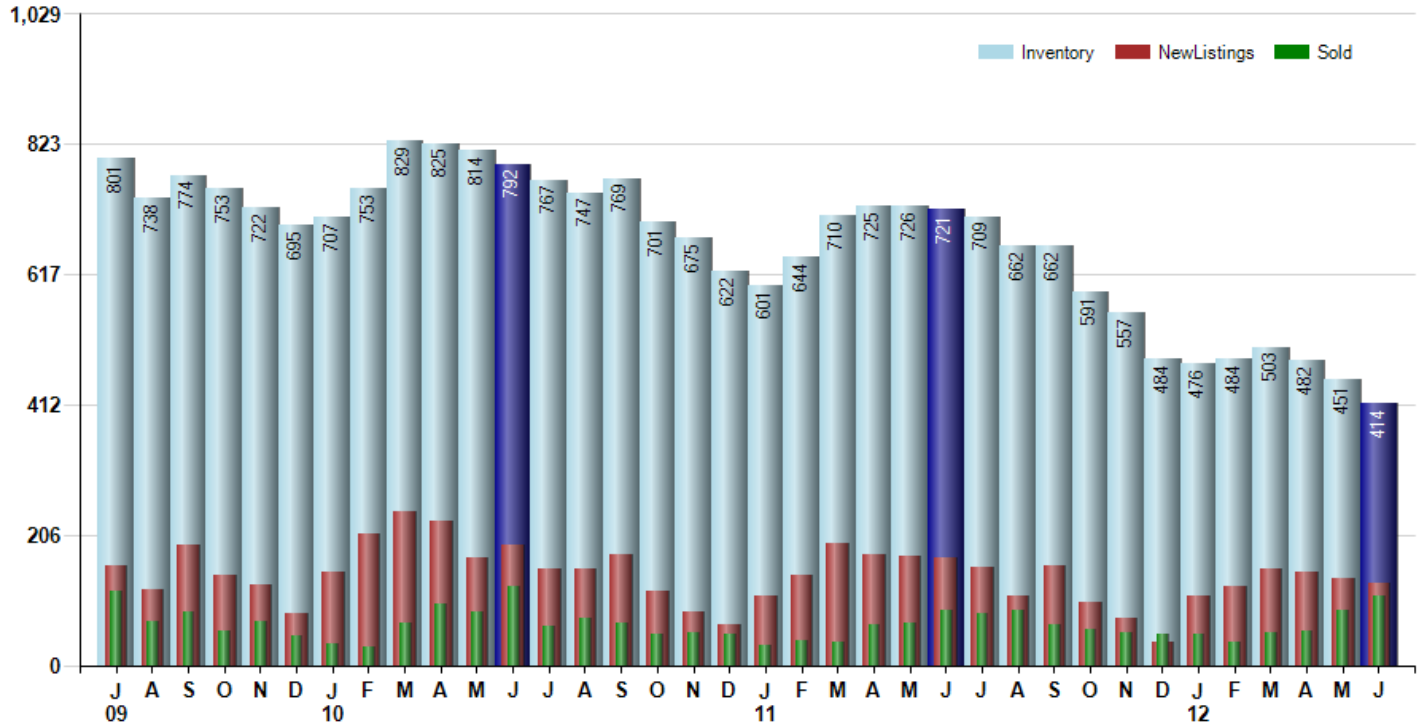
ART WILSON
 Broker, Realtor
 847-363-1599
 Art.Wilson@cbexchange.com



Price Range: ALL | Properties: Single Family Home, Townhome, Condo

Inventory / New Listings / Sales

This last view of the market combines monthly inventory of Properties for sale along with New Listings and Sales. The graph shows the basic annual seasonality of the market as well as the relationship between these items. The number of New Listings in June 2012 was 130, down -4.4% from 136 last month and down -24.0% from 171 in June of last year.



Based on information from Midwest Real Estate Data LLC for the period 7/1/2009 through 6/30/2012. Due to MLS reporting methods and allowable reporting policy, this data is only informational and may not be completely accurate. Therefore, Coldwell Banker Residential Brokerage does not guarantee the data accuracy. Data maintained by the MLS's may not reflect all real estate activity in the market.



MARKET ACTION REPORT

June 2012

MLS Area: Evanston



ART WILSON
 Broker, Realtor
 847-363-1599
 Art.Wilson@cbexchange.com



Price Range: ALL | Properties: Single Family Home, Townhome, Condo

	J 09	A	S	O	N	D	J 10	F	M	A	M	J	J	A	S	O	N	D	J 11	F	M	A	M	J	J	A	S	O	N	D	J 12	F	M	A	M	J
Homes Sold	116	68	85	54	68	46	33	29	66	96	84	125	62	74	67	49	52	50	32	38	37	63	67	87	83	86	63	56	51	49	50	36	51	53	87	109
3 Mo. Roll Avg			90	69	69	56	49	36	43	64	82	102	90	87	68	63	56	50	45	40	36	46	56	72	79	85	77	68	57	52	50	45	46	47	64	83

(000's)	J 09	A	S	O	N	D	J 10	F	M	A	M	J	J	A	S	O	N	D	J 11	F	M	A	M	J	J	A	S	O	N	D	J 12	F	M	A	M	J
Median Sale Price	340	299	243	250	260	301	350	315	267	289	288	319	393	401	280	290	319	305	228	261	223	272	345	330	325	275	331	328	198	301	319	250	305	238	265	310
3 Mo. Roll Avg			294	264	251	270	304	322	311	290	281	299	333	371	358	324	296	305	284	264	237	252	280	316	333	310	310	311	286	276	273	290	291	264	269	271

	J 09	A	S	O	N	D	J 10	F	M	A	M	J	J	A	S	O	N	D	J 11	F	M	A	M	J	J	A	S	O	N	D	J 12	F	M	A	M	J
Inventory	801	738	774	753	722	695	707	753	829	825	814	792	767	747	769	701	675	622	601	644	710	725	726	721	709	662	662	591	557	484	476	484	503	482	451	414
MSI	7	11	9	14	11	15	21	26	13	9	10	6	12	10	11	14	13	12	19	17	19	12	11	8	9	8	11	11	11	10	10	13	10	9	5	4

	J 09	A	S	O	N	D	J 10	F	M	A	M	J	J	A	S	O	N	D	J 11	F	M	A	M	J	J	A	S	O	N	D	J 12	F	M	A	M	J
Days On Market	89	109	111	118	106	92	111	93	113	94	82	81	76	85	83	114	126	82	82	98	86	84	83	91	88	93	87	88	78	110	129	114	134	76	101	87
3 Mo. Roll Avg			103	113	112	105	103	99	106	100	96	86	80	81	81	94	108	107	97	87	89	89	84	86	87	91	89	89	84	92	106	118	126	108	104	88

	J 09	A	S	O	N	D	J 10	F	M	A	M	J	J	A	S	O	N	D	J 11	F	M	A	M	J	J	A	S	O	N	D	J 12	F	M	A	M	J
Price per Sq Ft	211	217	173	252	298	233	238	199	206	208	193	220	219	204	211	222	180	150	177	136	174	195	209	206	196	195	201	169	161	185	183	174	211	174	167	203
3 Mo. Roll Avg			200	214	241	261	256	223	214	204	202	207	211	214	211	212	204	184	169	154	162	168	193	203	204	199	197	188	177	172	176	181	189	186	184	181

	J 09	A	S	O	N	D	J 10	F	M	A	M	J	J	A	S	O	N	D	J 11	F	M	A	M	J	J	A	S	O	N	D	J 12	F	M	A	M	J
Sale to List Price	0.950	0.938	0.942	0.948	0.940	0.938	0.940	0.920	0.941	0.944	0.942	0.952	0.947	0.945	0.949	0.935	0.944	0.938	0.933	0.950	0.958	0.966	0.957	0.939	0.949	0.945	0.946	0.947	0.932	0.931	0.942	0.930	0.951	0.952	0.945	0.954
3 Mo. Roll Avg			0.943	0.943	0.943	0.942	0.939	0.933	0.934	0.935	0.942	0.946	0.947	0.948	0.947	0.943	0.943	0.939	0.938	0.940	0.947	0.958	0.960	0.954	0.948	0.944	0.947	0.946	0.942	0.937	0.935	0.934	0.941	0.944	0.949	0.950

	J 09	A	S	O	N	D	J 10	F	M	A	M	J	J	A	S	O	N	D	J 11	F	M	A	M	J	J	A	S	O	N	D	J 12	F	M	A	M	J
New Listings	156	119	189	142	126	83	146	207	244	228	171	190	152	152	176	116	85	65	110	143	192	174	173	171	154	110	157	100	75	37	110	125	151	148	136	130
Inventory	801	738	774	753	722	695	707	753	829	825	814	792	767	747	769	701	675	622	601	644	710	725	726	721	709	662	662	591	557	484	476	484	503	482	451	414
Sales	116	68	85	54	68	46	33	29	66	96	84	125	62	74	67	49	52	50	32	38	37	63	67	87	83	86	63	56	51	49	50	36	51	53	87	109

(000's)	J 09	A	S	O	N	D	J 10	F	M	A	M	J	J	A	S	O	N	D	J 11	F	M	A	M	J	J	A	S	O	N	D	J 12	F	M	A	M	J
Avg Sale Price	414	381	282	324	316	343	473	364	332	323	341	407	415	445	341	373	390	302	301	322	285	336	459	403	393	342	380	377	255	359	409	409	385	294	366	377
3 Mo. Roll Avg			359	329	308	328	377	393	390	340	332	357	388	423	400	386	368	355	331	308	303	314	360	399	418	379	371	366	337	330	341	392	401	362	348	346

