

MLS Area: Lake Forest



ART WILSON
 Broker, Realtor
 847-363-1599
 Art.Wilson@cbexchange.com



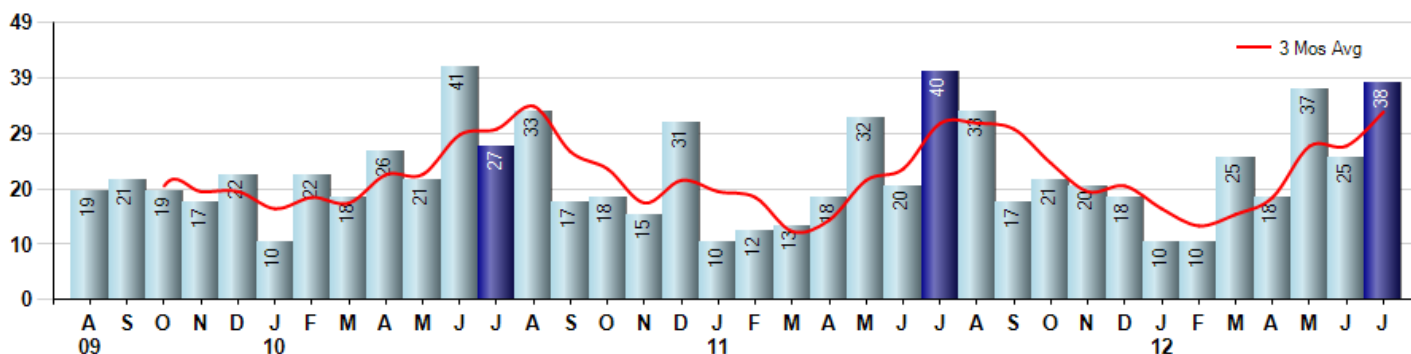
Price Range: ALL | Properties: Single Family Home, Townhome, Condo

Market Profile & Trends Overview	Month	Trending Versus*:				YTD	Trending Versus*:	
		LM	L3M	PYM	LY		PriorYTD	PriorYear
Median List Price of all Current Listings	\$999,000	↓		↑				
Average List Price of all Current Listings	\$1,572,070	↔		↑				
July Median Sales Price	\$640,000	↓	↓	↓	↓	\$650,000	↓	↓
July Average Sales Price	\$774,684	↓	↓	↓	↓	\$848,962	↓	↓
Total Properties Currently for Sale (Inventory)	280	↓		↓				
July Number of Properties Sold	38	↑		↓		163	↑	
July Average Days on Market (Solds)	168	↓	↑	↑	↑	158	↑	↓
July Month's Supply of Inventory	7.4	↓	↓	↓	↓	15.8	↓	↓
July Sale Price vs List Price Ratio	91.4%	↓	↑	↑	↑	88.9%	↑	↑

* LM=Last Month / L3M=Last 3 Months / PYM=Same Month Prior Year / LY=Last Year / YTD = Year-to-date

Property Sales

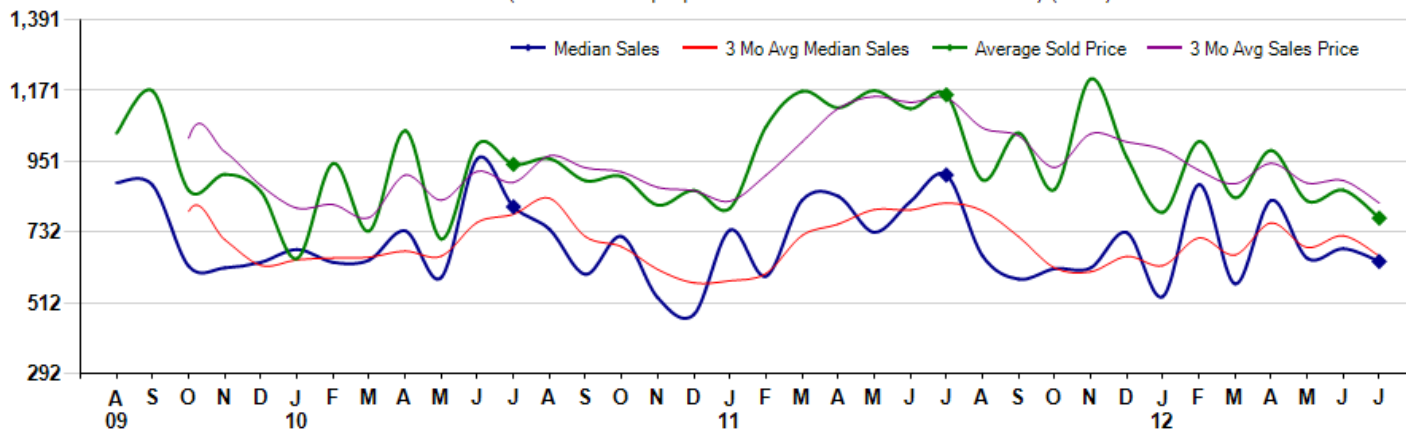
July Property sales were 38, down -5.0% from 40 in July of 2011 and 52.0% higher than the 25 sales last month. July 2012 sales were at a mid level compared to July of 2011 and 2010. July YTD sales of 163 are running 12.4% ahead of last year's year-to-date sales of 145.



Prices

The Median Sales Price in July was \$640,000, down -29.6% from \$909,000 in July of 2011 and down -5.9% from \$680,000 last month. The Average Sales Price in July was \$774,684, down -33.1% from \$1,158,340 in July of 2011 and down -10.1% from \$861,920 last month. July 2012 ASP was at the lowest level compared to July of 2011 and 2010.

Median means Middle (the same # of properties sold above and below Median) (000's)



Based on information from Midwest Real Estate Data LLC for the period 8/1/2009 through 7/31/2012. Due to MLS reporting methods and allowable reporting policy, this data is only informational and may not be completely accurate. Therefore, Coldwell Banker Residential Brokerage does not guarantee the data accuracy. Data maintained by the MLS's may not reflect all real estate activity in the market.



MLS Area: Lake Forest



ART WILSON
 Broker, Realtor
 847-363-1599
 Art.Wilson@cbexchange.com



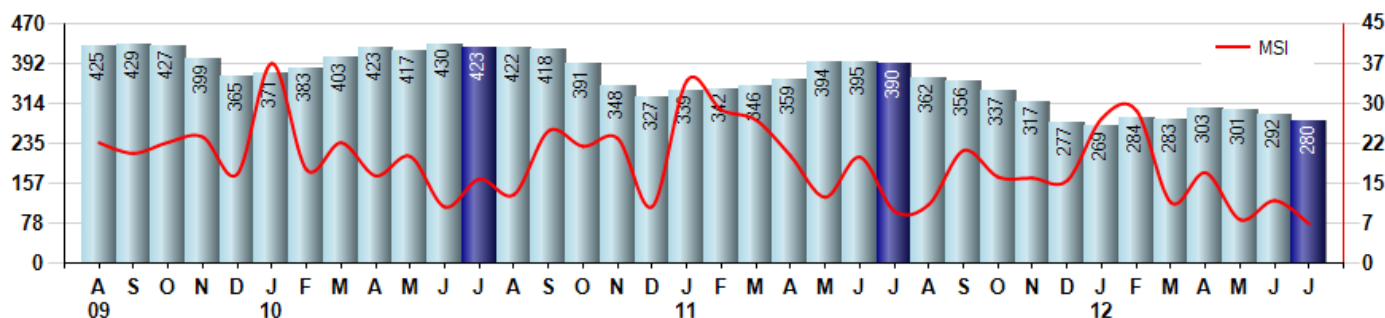
Price Range: ALL | Properties: Single Family Home, Townhome, Condo

Inventory & MSI

The Total Inventory of Properties available for sale as of July was 280, down -4.1% from 292 last month and down -28.2% from 390 in July of last year. July 2012 Inventory was at the lowest level compared to July of 2011 and 2010.

A comparatively lower MSI is more beneficial for sellers while a higher MSI is better for buyers. The July 2012 MSI of 7.4 months was at its lowest level compared with July of 2011 and 2010.

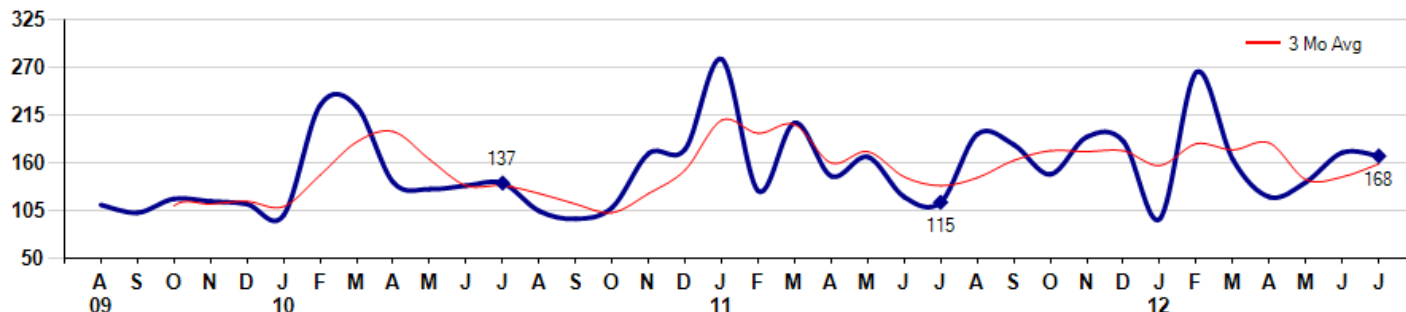
MSI is the # of months needed to sell all of the Inventory at the monthly Sales Pace



Market Time

The average Days On Market (DOM) shows how many days the average Property is on the Market before it sells. An upward trend in DOM tends to indicate a move towards more of a Buyer's market, a downward trend a move towards more of a Seller's market. The DOM for July was 168, down -2.3% from 172 days last month and up 46.1% from 115 days in July of last year. The July 2012 DOM was at its highest level compared with July of 2011 and 2010.

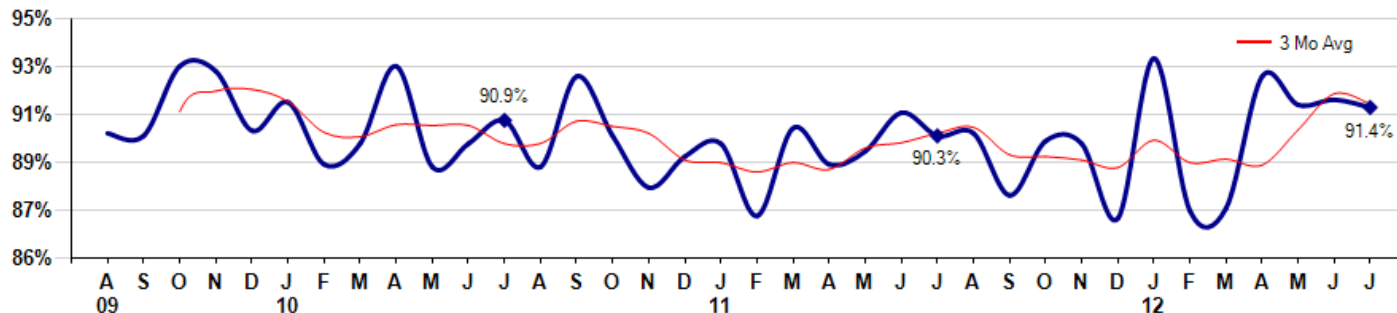
Average Days on Market (Listing to Contract) for properties sold during the month



Selling Price vs Listing Price

The Selling Price vs Listing Price reveals the average amount that Sellers are agreeing to come down from their list price. The lower the ratio is below 100% the more of a Buyer's market exists, a ratio at or above 100% indicates more of a Seller's market. The July 2012 Selling Price vs List Price of 91.4% was down from 91.7% last month and up from 90.3% in July of last year.

Avg Selling Price divided by Avg Listing Price for sold properties during the month



Based on information from Midwest Real Estate Data LLC for the period 8/1/2009 through 7/31/2012. Due to MLS reporting methods and allowable reporting policy, this data is only informational and may not be completely accurate. Therefore, Coldwell Banker Residential Brokerage does not guarantee the data accuracy. Data maintained by the MLS's may not reflect all real estate activity in the market.



MLS Area: Lake Forest



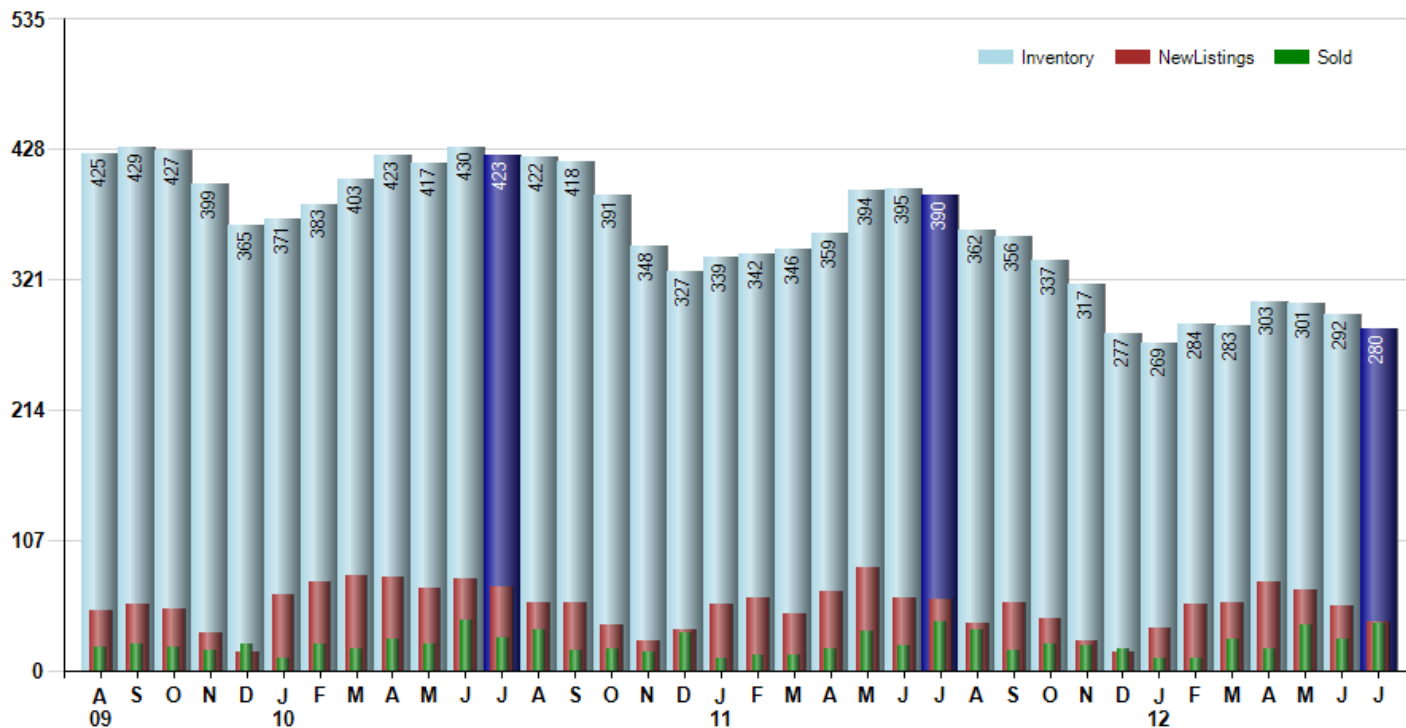
ART WILSON
 Broker, Realtor
 847-363-1599
 Art.Wilson@cbexchange.com



Price Range: ALL | Properties: Single Family Home, Townhome, Condo

Inventory / New Listings / Sales

This last view of the market combines monthly inventory of Properties for sale along with New Listings and Sales. The graph shows the basic annual seasonality of the market as well as the relationship between these items. The number of New Listings in July 2012 was 40, down -24.5% from 53 last month and down -31.0% from 58 in July of last year.



Based on information from Midwest Real Estate Data LLC for the period 8/1/2009 through 7/31/2012. Due to MLS reporting methods and allowable reporting policy, this data is only informational and may not be completely accurate. Therefore, Coldwell Banker Residential Brokerage does not guarantee the data accuracy. Data maintained by the MLS's may not reflect all real estate activity in the market.



MARKET ACTION REPORT

July 2012

MLS Area: Lake Forest



ART WILSON
 Broker, Realtor
 847-363-1599
 Art.Wilson@cbexchange.com



Price Range: ALL | Properties: Single Family Home, Townhome, Condo

	A 09	S	O	N	D	J 10	F	M	A	M	J	J	A	S	O	N	D	J 11	F	M	A	M	J	J	A	S	O	N	D	J 12	F	M	A	M	J	J
Homes Sold	19	21	19	17	22	10	22	18	26	21	41	27	33	17	18	15	31	10	12	13	18	32	20	40	33	17	21	20	18	10	10	25	18	37	25	38
3 Mo. Roll Avg			20	19	19	16	18	17	22	22	29	30	34	26	23	17	21	19	18	12	14	21	23	31	31	30	24	19	20	16	13	15	18	27	27	33

	(000's) A 09	S	O	N	D	J 10	F	M	A	M	J	J	A	S	O	N	D	J 11	F	M	A	M	J	J	A	S	O	N	D	J 12	F	M	A	M	J	J
Median Sale Price	885	877	625	620	638	678	638	644	735	590	960	810	740	600	718	527	475	738	594	830	843	731	826	909	658	585	618	620	730	531	880	570	830	650	680	640
3 Mo. Roll Avg			796	707	628	645	651	653	672	656	762	787	837	717	686	615	573	580	602	721	756	801	800	822	798	717	620	608	656	627	713	660	760	683	720	657

	A 09	S	O	N	D	J 10	F	M	A	M	J	J	A	S	O	N	D	J 11	F	M	A	M	J	J	A	S	O	N	D	J 12	F	M	A	M	J	J
Inventory	425	429	427	399	365	371	383	403	423	417	430	423	422	418	391	348	327	339	342	346	359	394	395	390	362	356	337	317	277	269	284	283	303	301	292	280
MSI	22	20	22	23	17	37	17	22	16	20	10	16	13	25	22	23	11	34	29	27	20	12	20	10	11	21	16	16	15	27	28	11	17	8	12	7

	A 09	S	O	N	D	J 10	F	M	A	M	J	J	A	S	O	N	D	J 11	F	M	A	M	J	J	A	S	O	N	D	J 12	F	M	A	M	J	J
Days On Market	112	103	119	116	113	100	226	225	138	130	134	137	105	96	109	171	176	279	128	206	145	167	121	115	193	181	147	190	185	96	264	164	121	138	172	168
3 Mo. Roll Avg			111	113	116	110	146	184	196	164	134	134	125	113	103	125	152	209	194	204	160	173	144	134	143	163	174	173	174	157	182	175	183	141	144	159

	A 09	S	O	N	D	J 10	F	M	A	M	J	J	A	S	O	N	D	J 11	F	M	A	M	J	J	A	S	O	N	D	J 12	F	M	A	M	J	J
Price per Sq Ft	284	266	301	239	228	218	255	220	257	240	277	256	270	261	221	225	266	232	262	241	277	274	267	271	229	251	244	237	224	233	236	219	247	220	242	220
3 Mo. Roll Avg			284	269	256	228	234	231	244	239	258	258	268	262	251	236	237	241	253	245	260	264	273	271	256	250	241	244	235	231	231	229	234	229	236	227

	A 09	S	O	N	D	J 10	F	M	A	M	J	J	A	S	O	N	D	J 11	F	M	A	M	J	J	A	S	O	N	D	J 12	F	M	A	M	J	J
Sale to List Price	0.904	0.903	0.930	0.928	0.905	0.916	0.892	0.900	0.930	0.891	0.900	0.909	0.891	0.926	0.903	0.883	0.895	0.900	0.872	0.906	0.892	0.897	0.912	0.903	0.904	0.880	0.901	0.900	0.871	0.933	0.874	0.875	0.926	0.915	0.917	0.914
3 Mo. Roll Avg			0.912	0.920	0.921	0.916	0.904	0.903	0.907	0.907	0.907	0.900	0.900	0.909	0.907	0.904	0.894	0.893	0.889	0.893	0.890	0.898	0.900	0.904	0.906	0.896	0.895	0.894	0.891	0.901	0.893	0.894	0.892	0.905	0.919	0.915

	A 09	S	O	N	D	J 10	F	M	A	M	J	J	A	S	O	N	D	J 11	F	M	A	M	J	J	A	S	O	N	D	J 12	F	M	A	M	J	J
New Listings	49	54	50	31	15	62	72	78	76	68	75	69	55	56	37	24	33	54	59	47	65	85	60	58	39	56	42	24	15	35	54	55	73	66	53	40
Inventory	425	429	427	399	365	371	383	403	423	417	430	423	422	418	391	348	327	339	342	346	359	394	395	390	362	356	337	317	277	269	284	283	303	301	292	280
Sales	19	21	19	17	22	10	22	18	26	21	41	27	33	17	18	15	31	10	12	13	18	32	20	40	33	17	21	20	18	10	10	25	18	37	25	38

	(000's) A 09	S	O	N	D	J 10	F	M	A	M	J	J	A	S	O	N	D	J 11	F	M	A	M	J	J	A	S	O	N	D	J 12	F	M	A	M	J	J
Avg Sale Price	1,039	1,170	861	911	857	649	945	734	1,047	710	1,005	942	960	891	904	815	861	806	1,059	1,170	1,118	1,172	1,115	1,158	893	1,040	864	1,208	964	793	1,013	838	985	828	862	775
3 Mo. Roll Avg			1,023	981	876	806	817	776	909	830	920	886	969	931	919	870	860	827	909	1,011	1,116	1,153	1,135	1,148	1,056	1,031	932	1,037	1,012	988	923	881	945	884	892	822

Based on information from Midwest Real Estate Data LLC for the period 8/1/2009 through 7/31/2012. Due to MLS reporting methods and allowable reporting policy, this data is only informational and may not be completely accurate. Therefore, Coldwell Banker Residential Brokerage does not guarantee the data accuracy. Data maintained by the MLS's may not reflect all real estate activity in the market.

